

### STANDARD BAR SPLICER ASSEMBLY

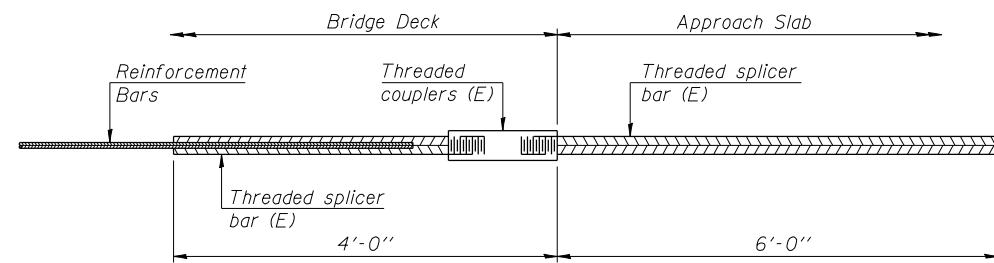
Bar size to be spliced	Minimum Lap Lengths					
	Table 1	Table 2	Table 3	Table 4	Table 5	Table 6
3, 4	1'-5"	1'-11"	2'-1"	2'-4"	2'-7"	2'-11"
5	1'-9"	2'-5"	2'-7"	2'-11"	3'-3"	3'-8"
6	2'-1"	2'-11"	3'-1"	3'-6"	3'-10"	4'-5"
7	2'-9"	3'-10"	4'-2"	4'-8"	5'-2"	5'-10"
8	3'-8"	5'-1"	5'-5"	6'-2"	6'-9"	7'-8"
9	4'-7"	6'-5"	6'-10"	7'-9"	8'-7"	9'-8"

Table 1: Black bar, 0.8 Class C  
 Table 2: Black bar, Top bar lap, 0.8 Class C  
 Table 3: Epoxy bar, 0.8 Class C  
 Table 4: Epoxy bar, Top bar lap, 0.8 Class C  
 Table 5: Epoxy bar, Class C  
 Table 6: Epoxy bar, Top bar lap, Class C

Threaded splicer bar length = min. lap length + 1 1/2" + thread length

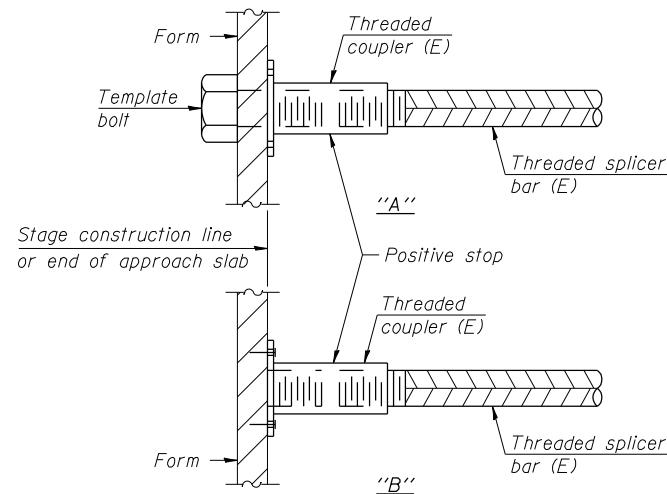
\* Epoxy not required on Bar Splicer Assembly components used in conjunction with black bars.

Location	Bar size	No. assemblies required	Table for minimum lap length
Approach slabs	#4	50	3
Approach slabs	#5	92	3
Approach footings	#5	80	3
Top bridge slab	#5	131	4
Bottom bridge slab	#5	118	3
Abutments	#7	24	4
Pier caps	#7	35	4
Pier walls	#5	200	3



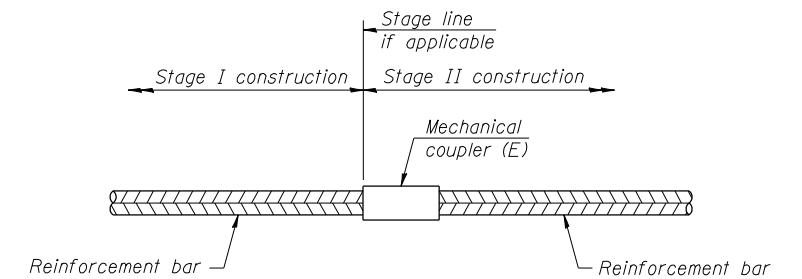
### BAR SPLICER ASSEMBLY FOR #5 BAR ON INTEGRAL OR SEMI-INTEGRAL ABUTMENTS

No. required = 84



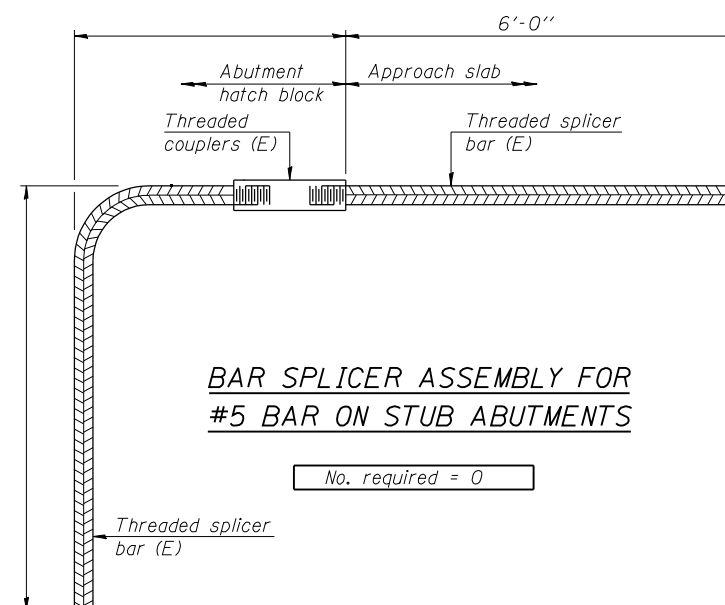
### INSTALLATION AND SETTING METHODS

"A" : Set bar splicer assembly by means of a template bolt.  
 "B" : Set bar splicer assembly by nailing to wood forms or cementing to steel forms.  
 (E) : Indicates epoxy coating.



### STANDARD MECHANICAL SPLICER

Location	Bar size	No. assemblies required
NA		



### BAR SPLICER ASSEMBLY FOR #5 BAR ON STUB ABUTMENTS

No. required = 0

### NOTES

Splicer bars shall be deformed with threaded ends and have a minimum 60 ksi yield strength.  
 All reinforcement shall be lapped and tied to the splicer bars.  
 Bar splicer assemblies shall be epoxy coated according to the requirements for reinforcement bars. See Section 508 of the Standard Specifications.  
 See approved list of bar splicer assemblies and mechanical splicers for alternatives.

BSD-1

1-27-12

PRINT DRIVER = L:\05-ESCA\B\011  
 SCALE = 1/8" = 1'-0"  
 FILE NAME = 097070-01054-21-Rev-01.dwg



USER NAME = has	DESIGNED - ELH 08/12	REVISED -
ESCA PROJECT NO. 988.11	CHECKED - RDP 10/12	REVISED -
PLOT SCALE = 1/8" = 1'-0"	DRAWN - HAS 08/12	REVISED -
PLOT DATE = 10/31/2012 7:18:03 AM	CHECKED - ELH 10/12	REVISED -

STATE OF ILLINOIS  
DEPARTMENT OF TRANSPORTATION

BAR SPLICER ASSEMBLY AND MECHANICAL SPLICER DETAILS  
STRUCTURE NO. 097-0078

SHEET NO. 21 OF 23 SHEETS

F.A.P. RTE.	SECTION	COUNTY	TOTAL SHEETS	SHEET NO.
332	4B-1	WHITE	70	42
CONTRACT NO. 78154				

ILLINOIS FED. AID PROJECT AID