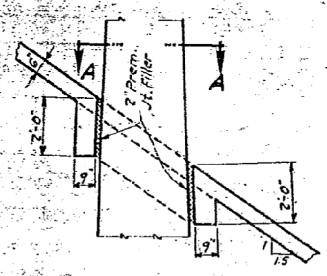
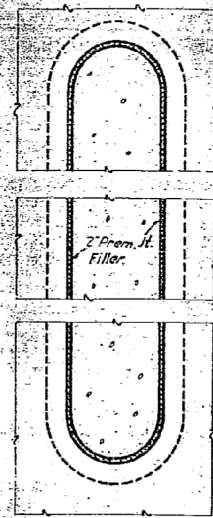
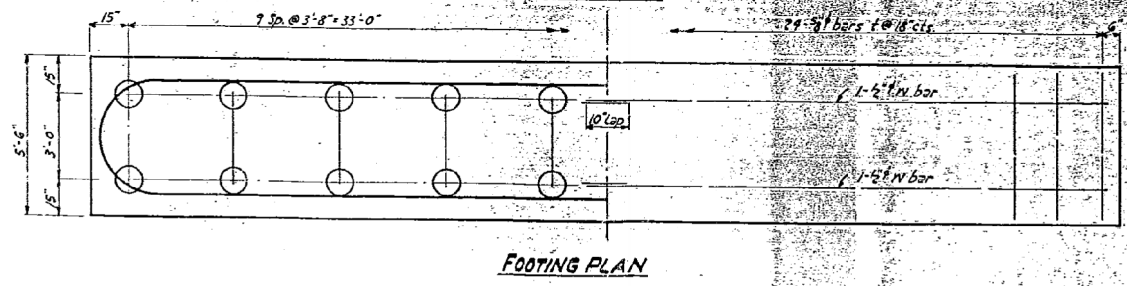
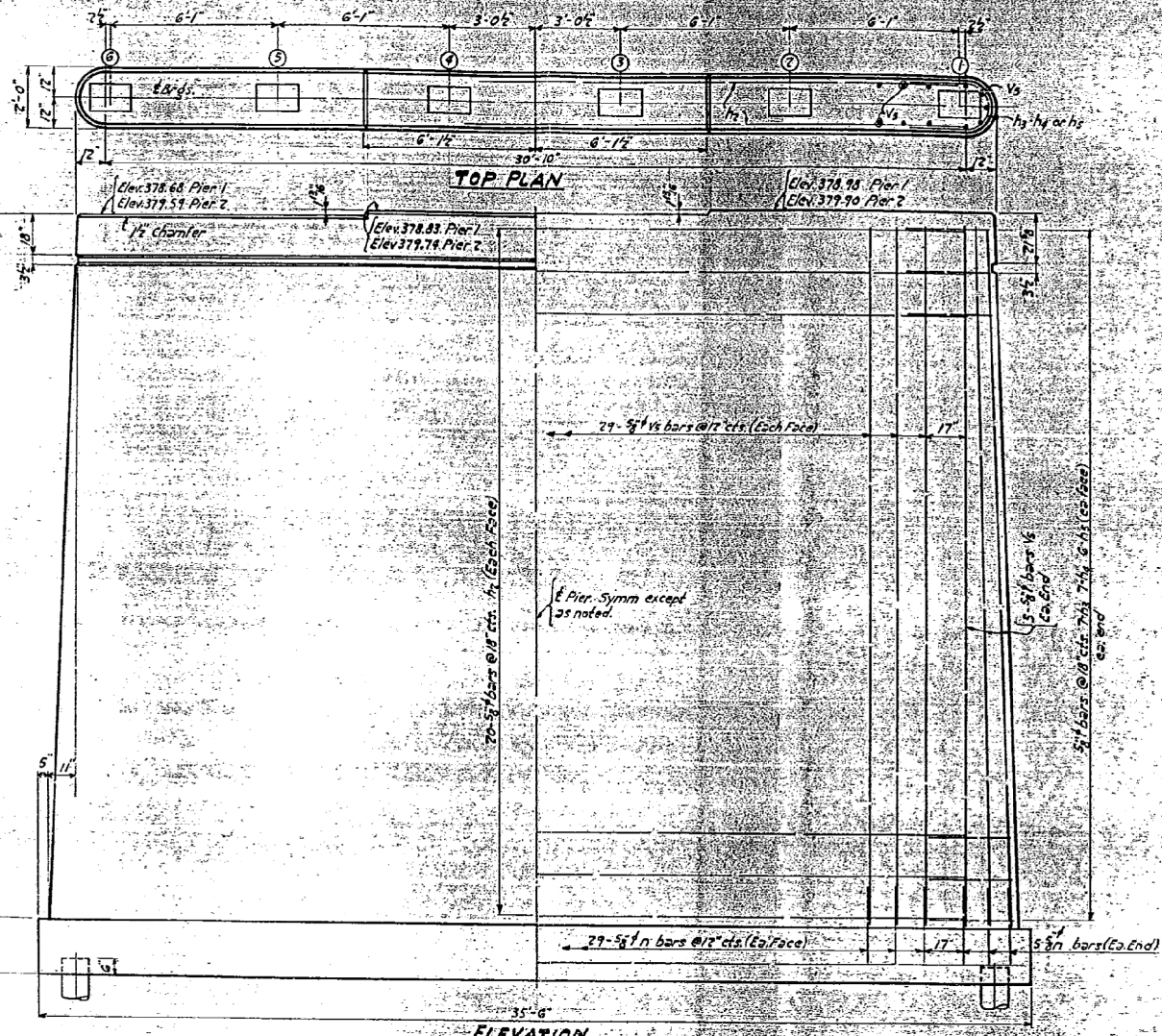
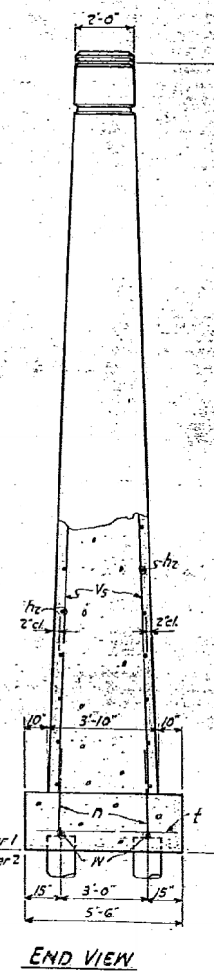


STATE OF ILLINOIS  
DEPARTMENT OF PUBLIC WORKS & BUILDINGS  
DIVISION OF HIGHWAYS

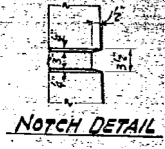
NO. 1	SECTION	DATE	TOTAL SHEETS	SHEET NO.
1	4-BK	WHITE	27	42
SHEET NO. 5 5 SHEETS				



PILE DATA PIERS 1 & 2  
Untreated Timber Piles 40 Reg'd.  
Min Capacity 20 Ton  
Est. Length 25 Feet.



BAR	R	A
$h_3$	10"	2'-0"
$h_4$	14"	2'-9"
$h_5$	18"	3'-6"



BILL OF MATERIAL PIERS 1 & 2

BAR	No.	SIZE	LENGTH	SHAPE
$h_3$	136	$\frac{3}{4}$ "	28'-3"	
$h_4$	80	$\frac{3}{4}$ "	30'-9"	
$h_5$	28	$\frac{3}{4}$ "	4'-0"	
$h_6$	28	$\frac{3}{4}$ "	9'-9"	
$h_7$	24	$\frac{3}{4}$ "	5'-6"	
$h_8$	130	$\frac{3}{4}$ "	3'-0"	
$h_9$	48	$\frac{3}{4}$ "	5'-0"	
N	8	$\frac{3}{4}$ "	18'-0"	

Class A Concrete Cu. Yds. 236.4  
Reinf. Bars Lbs. 7740  
Untreated Timber Piles (25' L. in Ft. 1000

DESIGNED *A. J. Campbell*  
CHECKED *John J. Murray*  
DRAWN *A. J. Campbell*  
CHECKED *John J. Murray*

EXAMINED  
PASSED  
APPROVED

PIERS 1 OR 2  
PROJECT F 52(6)  
SECTION 4 BY  
WHITE COUNTY  
STA. 259+97

FOR INFORMATION ONLY



USER NAME = has	DESIGNED - ELH	REVISED -
ESCA PROJECT NO. 988.11	DRAWN - HAS	REVISED -
PLOT SCALE = 0.1667' / IN.	CHECKED - RDP	REVISED -
PLOT DATE = 10/31/2012	DATE - 04/12	REVISED -

STATE OF ILLINOIS  
DEPARTMENT OF TRANSPORTATION

EXISTING STRUCTURE PLANS - FOR INFORMATION ONLY  
STRUCTURE NO. 097-0007

SCALE: SHEET NO. 3 OF 12 SHEETS STA. TO STA.

F.A.P. RTE.	SECTION	COUNTY	TOTAL SHEETS	SHEET NO.
332	4B-1	WHITE	70	47
CONTRACT NO. 78154				
FED. ROAD DIST. NO. ILLINOIS FED. AID PROJECT AID				