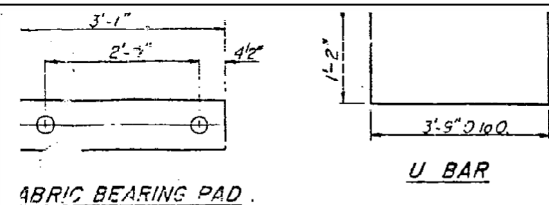
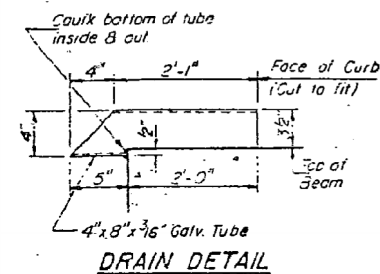


DEPARTMENT OF TRANSPORTATION



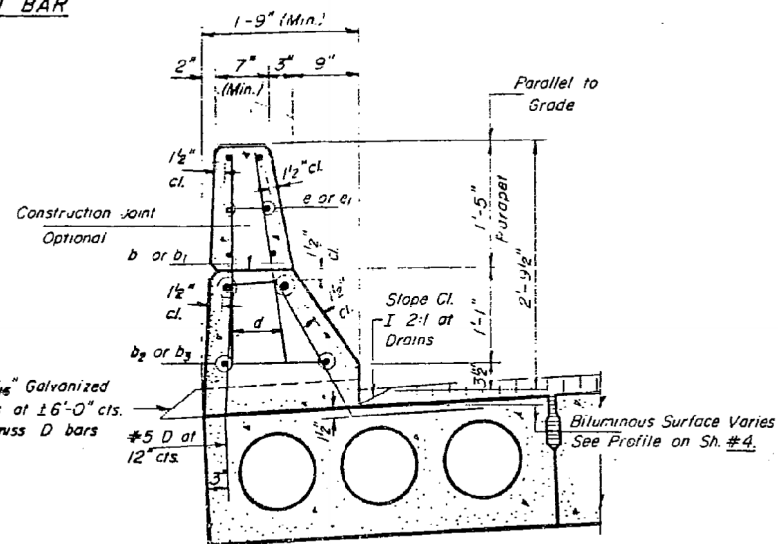
ABRIC BEARING PAD

U BAR



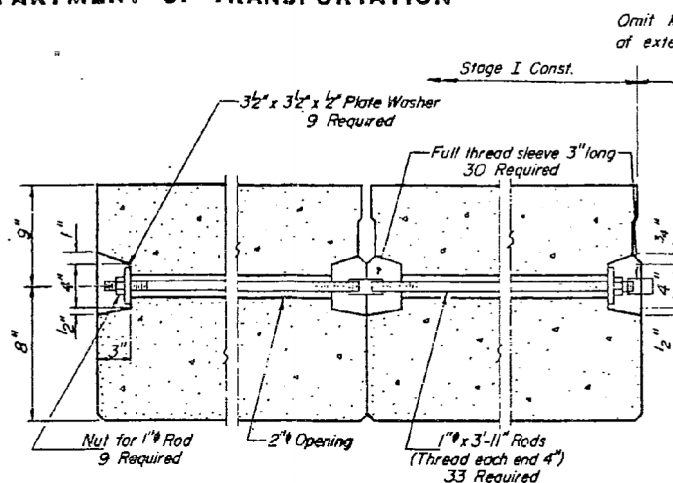
DRAIN DETAIL

4" x 8" x 3/16" Galvanized Drain Tubes at 16'-0" cts. Space to miss D bars

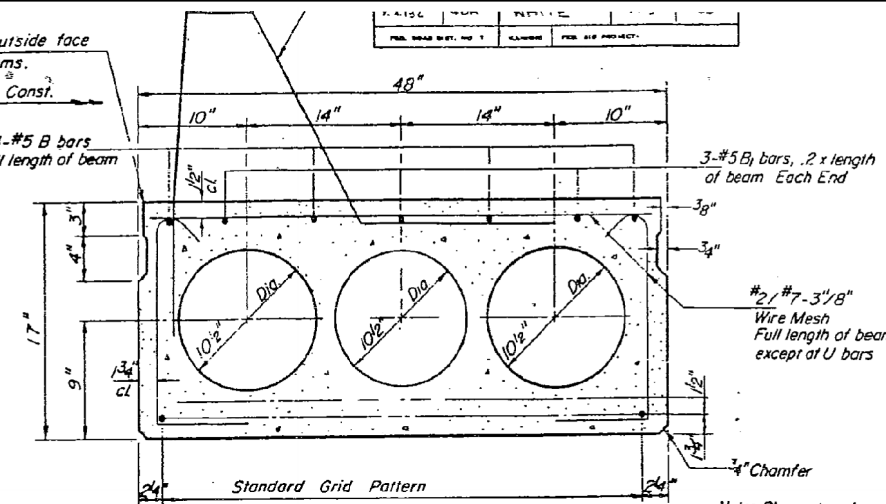


SECTION THRU CURB

Curbs shall be poured in the field. For placement of bars b thru b₃, d, e and e₁ see Sheet #4.



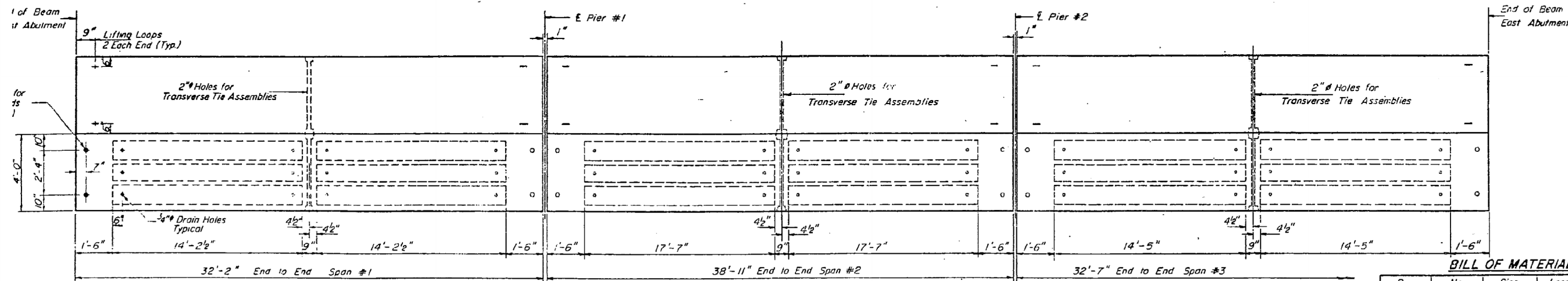
TYPICAL TRANSVERSE TIE ASSEMBLY



TYPICAL SECTION

Spans #1 & #3	14 - #16 Strands, Each Strand Stressed to 21,700 Lbs. 14 - Strands 1-3/4" up,
Span #2	21 - #16 Strands, Each Strand Stressed to 21,700 Lbs. 9 - Strands 1-3/4" up, 12 - Strands 3/4" up

Note: For "Section thru Superstructure" See Sheet #3.

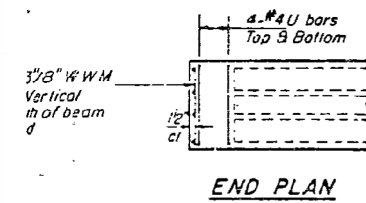


PLAN

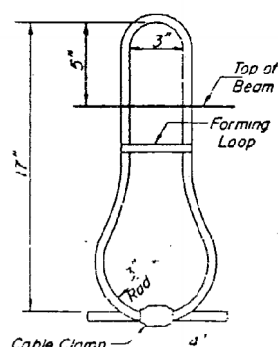
BILL OF MATERIAL

Bar	No.	Size	Length	Shape
b	16	#8	17'-9"	—
b ₁	8	#8	21'-0"	—
b ₂	16	#5	17'-0"	—
b ₃	8	#5	20'-0"	—
d	420	#5	2'-3"	—
Precast Prestressed Concrete Deck Beams (17")		Sq. Ft.	4561	
Reinforcement Bars		Pounds	2640	
Class X Concrete			22.5	

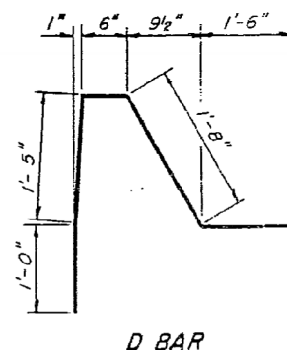
Parapet reinforcement & Class X Concrete are billed on Sheet #4.



END PLAN



LIFTING LOOP DETAIL



D BAR

NOTES

Prestressing steel shall be non-galvanized high strength, stress-relieved 7-wire strand, Grade 270. The nominal diameter shall be 7/16" and the nominal cross-sectional area shall be 0.115 sq. in. Lifting loops shall be 1/2" diameter, 6 x 25 class wire rope with fiber core and shall have a minimum ultimate tensile strength of 21,000 lbs. The 1" rods in the transverse tie assembly shall be tightened to a snug fit and the threads set. Packets that receive transverse tie bar on outside shall be filled with grout after transverse tie assembly is in place. Longitudinal shear keys shall be packed with a very dry mix of 2:1 sand and P.C. mortar. After beams have been erected, holes for the dowel anchors shall be drilled into the sub-structure and the anchor dowels shall be grouted in place.

Cost of reinforcement and accessories cast into the beam, of bearing pads, of dowel rods, and of grouting longitudinal shear keys is included in unit price bid for "Precast Prestressed Concrete Deck Beams."

DESIGNED	EXAMINED
DRAWN	PASSED
CHECKED	APPROVED

FOR INFORMATION ONLY

STATE OF ILLINOIS
DEPARTMENT OF TRANSPORTATION

EXISTING STRUCTURE PLANS - FOR INFORMATION ONLY
STRUCTURE NO. 097-0007

SCALE: SHEET NO. 5 OF 12 SHEETS STA. TO STA.

SUPERSTRUCTURE
F.A. RT. 132 SECTION 4 B.R
WHITE COUNTY
STA. 176+60.63

F.A.P. RTE.	SECTION	COUNTY	TOTAL SHEETS	SHEET NO.
332	4B-1	WHITE	70	49
FED. ROAD DIST. NO. ILLINOIS FED. AID PROJECT AID			CONTRACT NO. 78154	



USER NAME = has	DESIGNED - ELH	REVISED -
ESCA PROJECT NO. 988.11	DRAWN - HAS	REVISED -
PLOT SCALE = 0.1667' / IN.	CHECKED - RDP	REVISED -
PLOT DATE = 10/31/2012 7:22:57 AM	DATE - 04/12	REVISED -