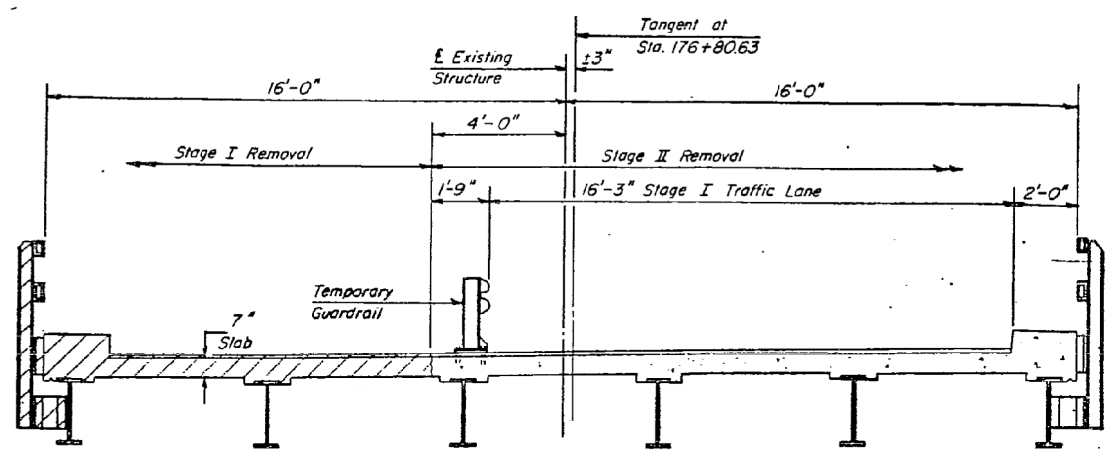
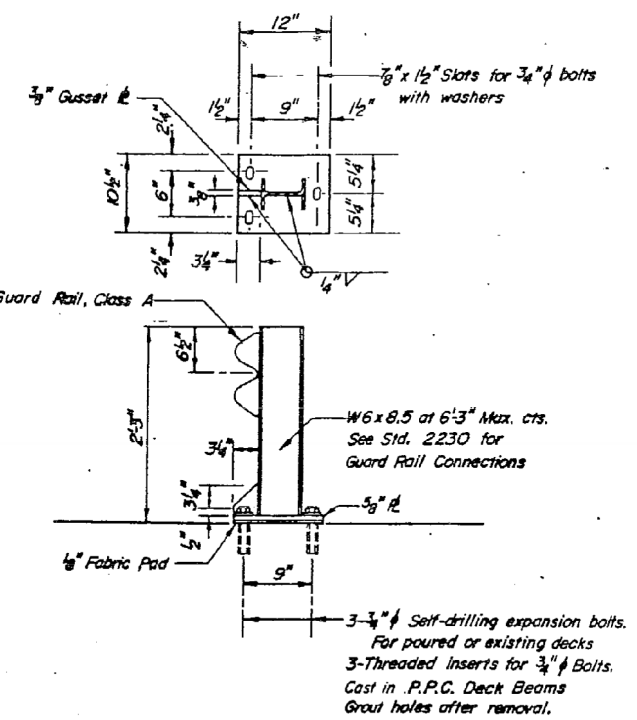


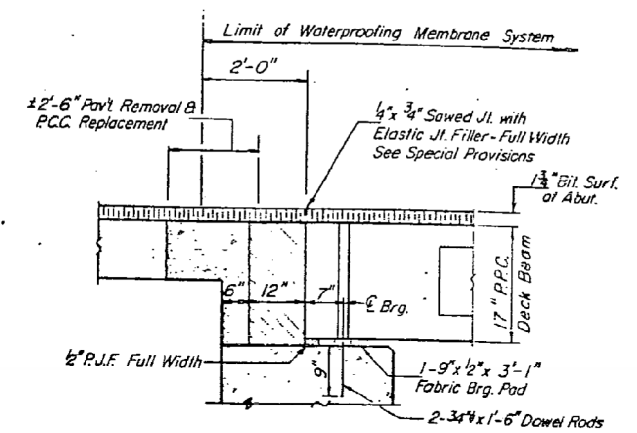
| | | | |
|----------|---------|-------|----------|
| DESIGNED | CHECKED | DRAWN | APPROVED |
|----------|---------|-------|----------|



STAGE REMOVAL SKETCH
(LOOKING EAST)

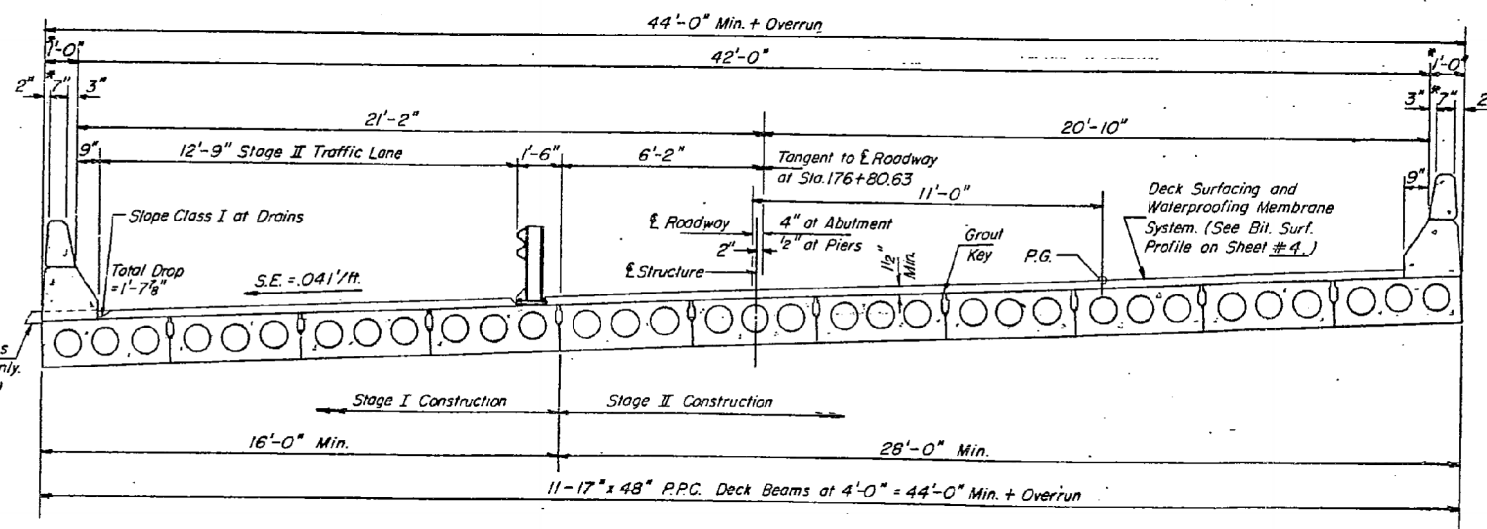


TEMPORARY GUARD RAIL DETAIL
See Special Provisions



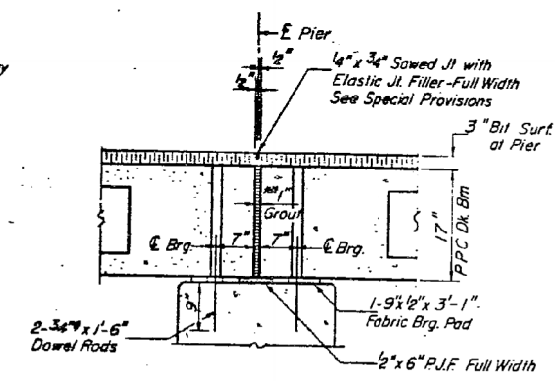
SECTION THRU ABUT.
AT & RDWY.

Note: Hatched area to be poured after superstructure is in place and joints grouted. Quantity of Class X Concrete is billed with the Superstructure on Sheet #2.



SECTION THRU SUPERSTRUCTURE & STAGE CONSTRUCTION SKETCH
(LOOKING EAST)

*Minimum dimensions may vary due to overrun.



SECTION THRU PIER

*1" Joint shall be packed with a very dry mix of 2:1 sand and P.C. mortar. This dimension may vary plus or minus to accommodate tolerance in beam lengths.

| | | | |
|----------|------------------|----------|-------------|
| DESIGNED | John A. Williams | EXAMINED | Aug 23 1976 |
| CHECKED | Joe J. Edwards | PASSED | |
| DRAWN | P. Bonnett | APPROVED | |
| CHECKED | Bill | | |

SUPERSTRUCTURE DETAILS
E.A. RT. 132 SECTION 4 BR
WHITE COUNTY
STA. 176+80.63

FOR INFORMATION ONLY

STATE OF ILLINOIS
DEPARTMENT OF TRANSPORTATION

EXISTING STRUCTURE PLANS - FOR INFORMATION ONLY
STRUCTURE NO. 097-0007

| | | | | |
|---------------------------------------------------|---------|--------|--------------|-----------|
| F.A.P. RTE. | SECTION | COUNTY | TOTAL SHEETS | SHEET NO. |
| 332 | 4B-1 | WHITE | 70 | 50 |
| CONTRACT NO. 78154 | | | | |
| FED. ROAD DIST. NO. ILLINOIS FED. AID PROJECT AID | | | | |



| | | |
|-----------------------------------|----------------|-----------|
| USER NAME = has | DESIGNED - ELH | REVISED - |
| ESCA PROJECT NO. 988.11 | DRAWN - HAS | REVISED - |
| PLOT SCALE = 0.1667' / IN. | CHECKED - RDP | REVISED - |
| PLOT DATE = 10/31/2012 7:23:10 AM | DATE - 04/12 | REVISED - |

SCALE: SHEET NO. 6 OF 12 SHEETS STA. TO STA.