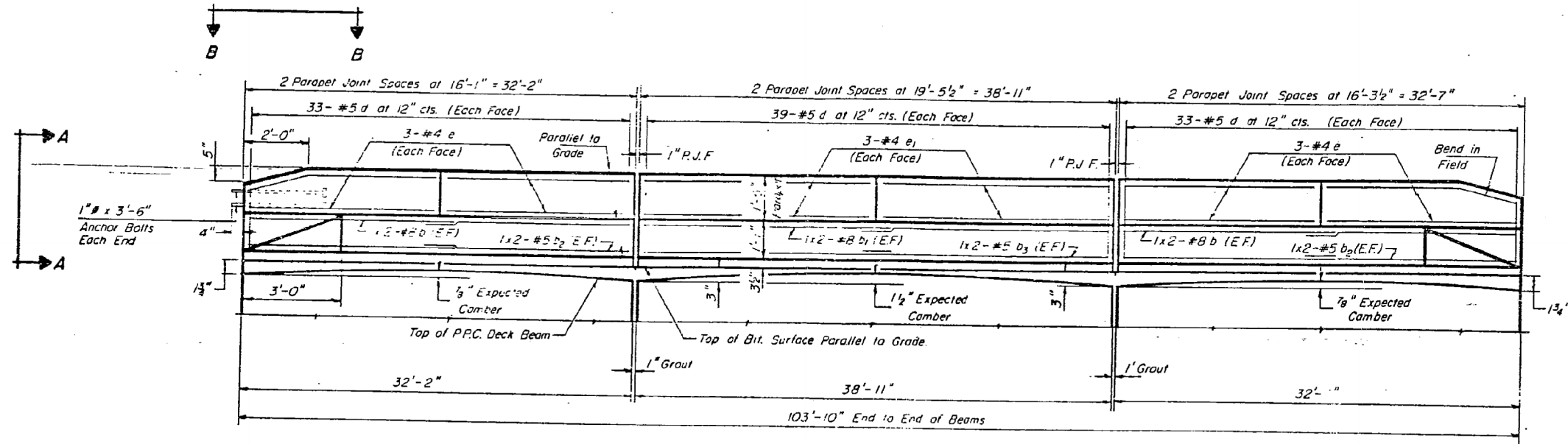
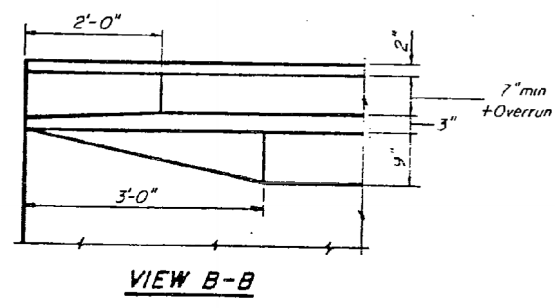
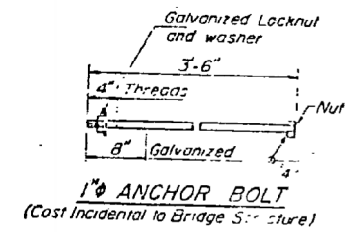
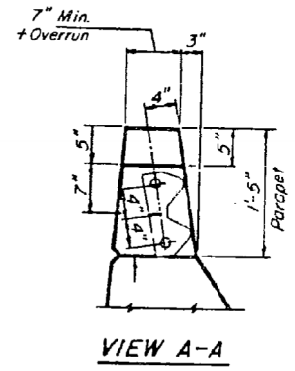


STATE OF ILLINOIS
DEPARTMENT OF TRANSPORTATION

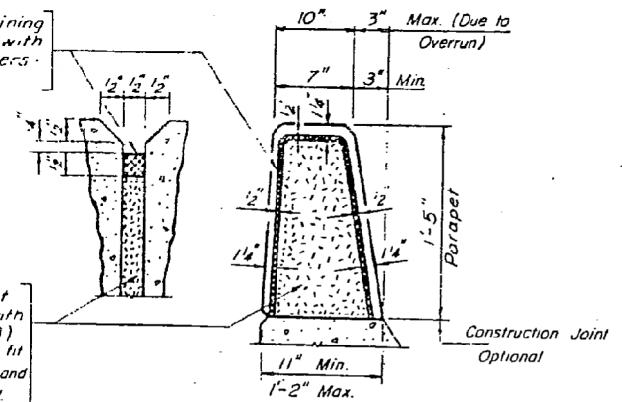
ROUTE NO.	SECTION	COUNTY	TOTAL SHEETS	SHEET NO.	SHEET NO.
R. 4.132	4B-R	WHITE	103	12	9
FED. ROAD DIST. NO. 7		ILLINOIS	FED. AID PROJECT		



CURB & PARAPET ELEVATION & BITUMINOUS SURFACE PROFILE



Two component non-staining gray sealing compound with polysulfide liquid polymers - gun grade with primer.



1/2 Preformed Cork Joint Filler (In accordance with Articles 715.07 or 715.08) Cost incidental. Order to fit. Maximum dimensions shown and cut to fit as required in field.

PARAPET
BILL OF MATERIAL

BAR	NO.	SIZE	LENGTH	SHAPE
e	48	#4	15'-10"	—
e1	24	#4	19'-3"	—
Reinforcement Bars				800
Class X Concrete				100

DESIGNED	John A. Williams	EXAMINED	[Signature]
CHECKED	X. J. Edwards	PASSED	[Signature]
DRAWN	P. Barnett	APPROVED	[Signature]
CHECKED	[Signature]		

CURB & PARAPET DETAILS
F.A. RT. SECTION 4 B
WHITE COUNTY

FOR INFORMATION ONLY

STATE OF ILLINOIS
DEPARTMENT OF TRANSPORTATION

EXISTING STRUCTURE PLANS - FOR INFORMATION ONLY
STRUCTURE NO. 097-0007

F.A.P. RTE.	SECTION	COUNTY	TOTAL SHEETS	SHEET NO.
332	4B-1	WHITE	70	51
SCALE:		SHEET NO. 7 OF 12 SHEETS	STA.	TO STA.
FED. ROAD DIST. NO.		ILLINOIS	FED. AID PROJECT AID	



USER NAME = has	DESIGNED - ELH	REVISED -
ESCA PROJECT NO. 988.11	DRAWN - HAS	REVISED -
PLOT SCALE = 0.1667' / IN.	CHECKED - RDP	REVISED -
PLOT DATE = 10/31/2012 7:23:25 AM	DATE - 04/12	REVISED -