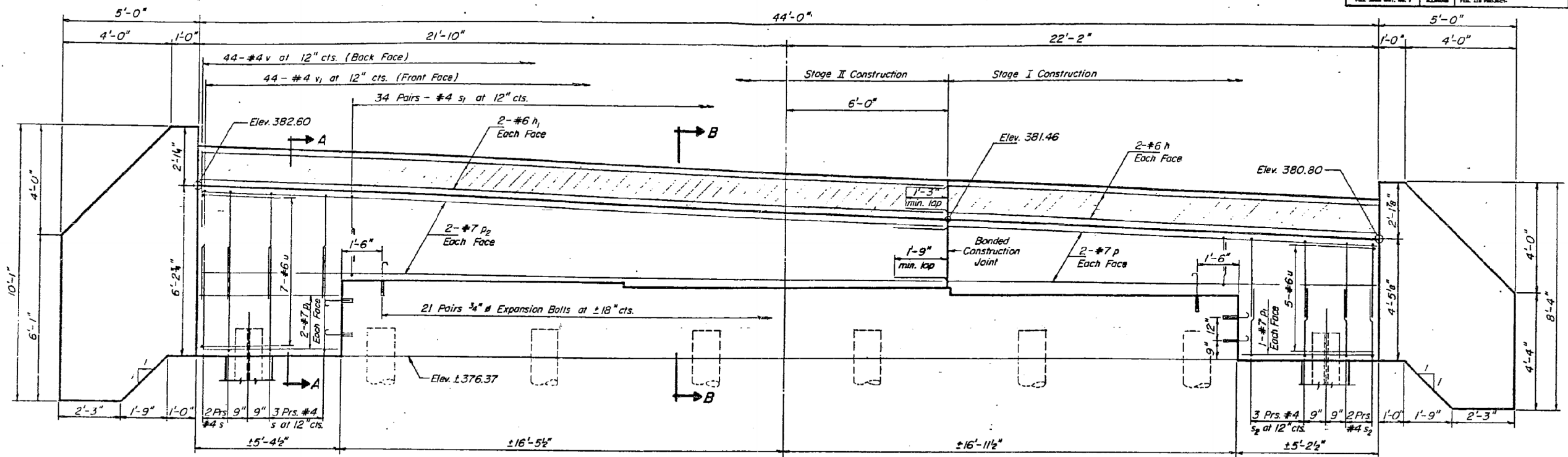
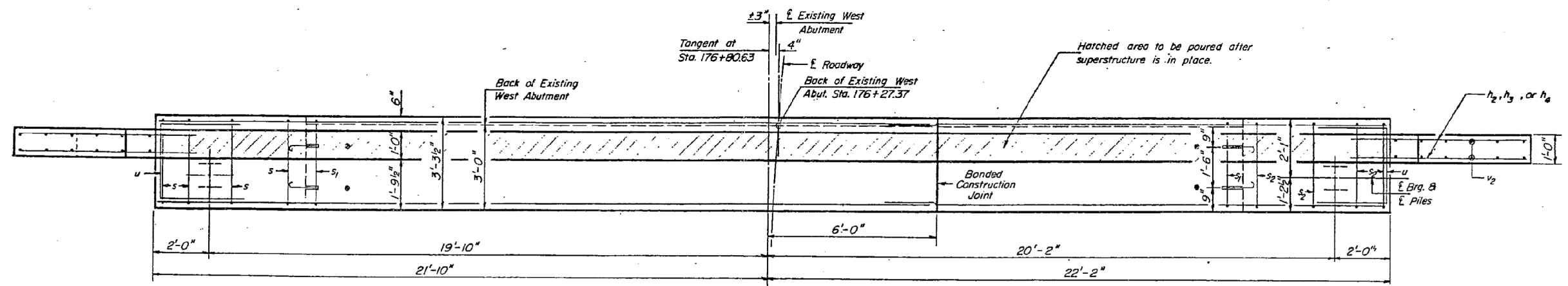


STATE OF ILLINOIS
DEPARTMENT OF TRANSPORTATION

DATE	BY	CHECKED	TOTAL SHEETS	SHEET NO.
10/31/12	4BR	WHITE	103	43
SHEET NO. 5 9 SHEETS				

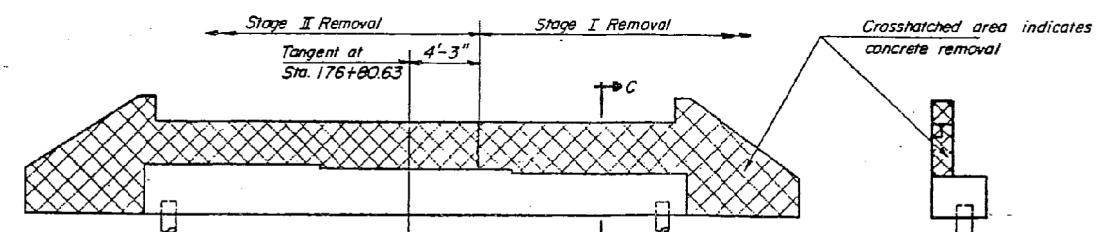


ELEVATION



PLAN

PILE DATA
Type: Steel (HP10 x 42)
Capacity: Drive to Refusal
Est. Length: 70'-0"
No. Required: 2



CONCRETE REMOVAL SKETCH

ELEVATION

SECTION C-C

Note: Work this sheet with Sheet # 7.

WEST ABUTMENT
F.A. RT. 132 SECTION 4 BR
WHITE COUNTY
STA. 176+80.63

DESIGNED	John A. Mann	EXAMINED	10/23/12
CHECKED	Jan J. Egan	PASSED	
DRAWN	P. Barnett	APPROVED	
CHECKED			

FOR INFORMATION ONLY

STATE OF ILLINOIS
DEPARTMENT OF TRANSPORTATION

EXISTING STRUCTURE PLANS - FOR INFORMATION ONLY
STRUCTURE NO. 097-0007

F.A.P. RTE.	SECTION	COUNTY	TOTAL SHEETS	SHEET NO.
332	4B-1	WHITE	70	52
CONTRACT NO. 78154				
FED. ROAD DIST. NO. ILLINOIS FED. AID PROJECT AID				



USER NAME = has	DESIGNED - ELH	REVISED -
ESCA PROJECT NO. 988.11	DRAWN - HAS	REVISED -
PLOT SCALE = 0.1667" / IN.	CHECKED - RDP	REVISED -
PLOT DATE = 10/31/2012 7:23:37 AM	DATE - 04/12	REVISED -

SCALE: SHEET NO. 8 OF 12 SHEETS STA. TO STA.