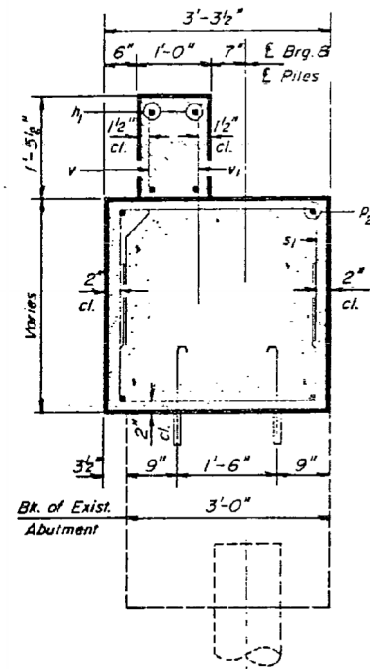
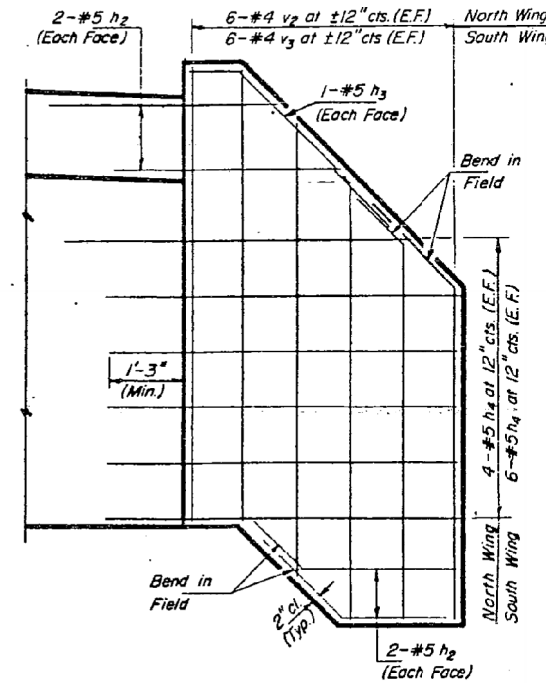


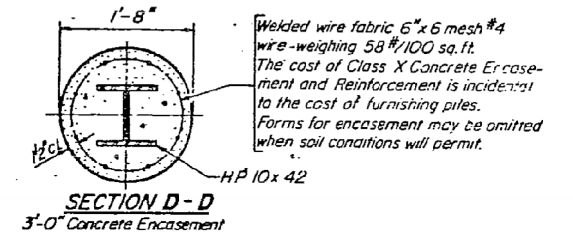
SECTION A-A



SECTION B-B



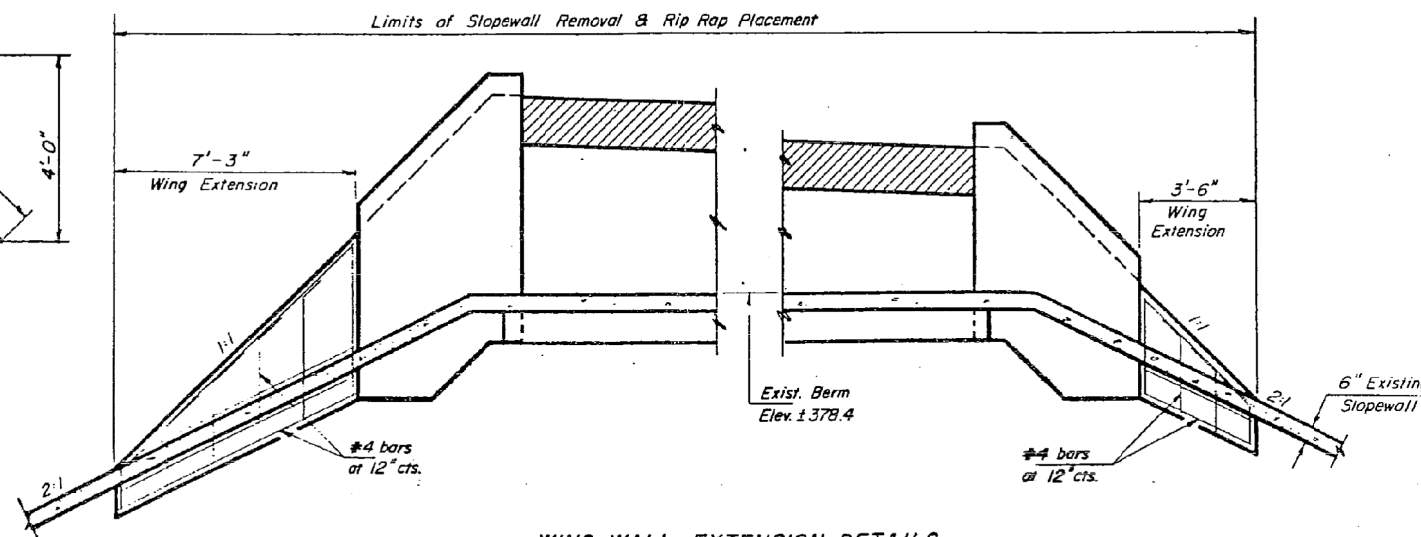
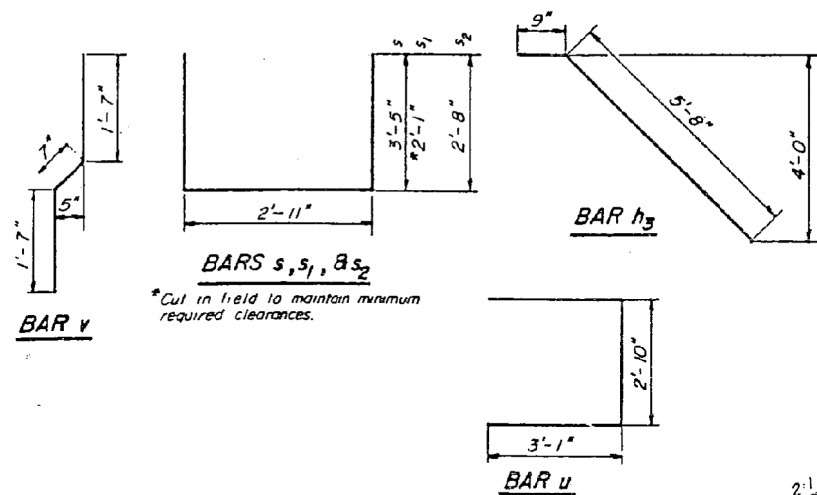
WING WALL DETAILS



SECTION D-D  
3'-0" Concrete Encasement

TWO ABUTMENTS  
BILL OF MATERIAL

BAR	NO	SIZE	LENGTH	SHAPE
h	8	#6	17'-3"	—
h1	8	#6	27'-6"	—
h2	32	#5	4'-0"	—
h3	8	#5	6'-5"	—
h4	40	#5	6'-3"	—
p	8	#7	17'-9"	—
p1	12	#7	5'-0"	—
p2	8	#7	27'-6"	—
s	20	#4	9'-9"	□
s1	136	#4	7'-1"	□
s2	20	#4	8'-3"	□
u	24	#6	9'-0"	□
v	88	#4	3'-9"	—
v1	88	#4	3'-0"	—
v2	24	#4	6'-3"	—
v3	24	#4	8'-0"	—
Class X Concrete			Cu. Yds.	40.7
Reinforcement Bars			Pounds	3680
Steel Piles (HP10x42)			Lin. Ft.	280
3/4" Expansion Balls			Each	100
Concrete Removal			Cu. Yds.	11.0



WING WALL EXTENSION DETAILS  
(Cost incidental to Class X Concrete)  
(LOOKING WEST)

DESIGNED: John P. Moore  
CHECKED: Joe J. Clark  
DRAWN: P. Barnett  
CHECKED: [Signature]  
EXAMINED: [Signature]  
PASSED: [Signature]  
APPROVED: [Signature]  
DATE: Aug 23, 1976

ABUTMENT DETAILS  
FA. RT. 132 SECTION 4 BR  
WHITE COUNTY  
STA. 176+80.63

FOR INFORMATION ONLY

STATE OF ILLINOIS  
DEPARTMENT OF TRANSPORTATION

EXISTING STRUCTURE PLANS - FOR INFORMATION ONLY  
STRUCTURE NO. 097-0007

SCALE: SHEET NO. 9 OF 12 SHEETS STA. TO STA.

F.A.P. RTE.	SECTION	COUNTY	TOTAL SHEETS	SHEET NO.
332	4B-1	WHITE	70	53
FED. ROAD DIST. NO. ILLINOIS FED. AID PROJECT AID			CONTRACT NO. 78154	



USER NAME	DESIGNED	REVISIONS
has	ELH	-
ESCA PROJECT NO. 988.11	HAS	-
PLOT SCALE = 0.1667" / IN.	RDP	-
PLOT DATE = 10/31/2012 7:23:53 AM	DATE	04/12