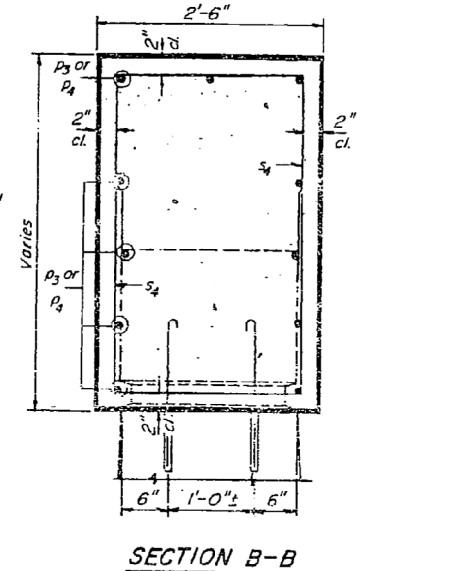
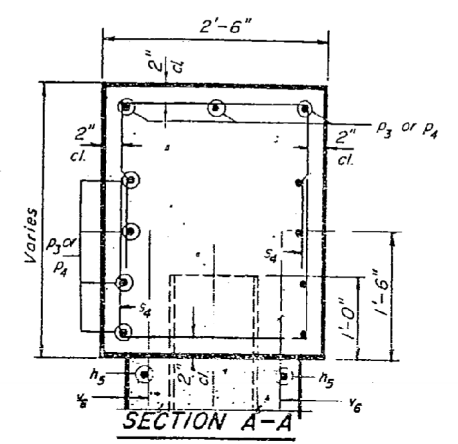
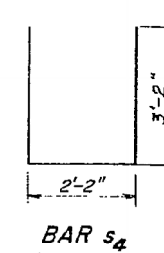
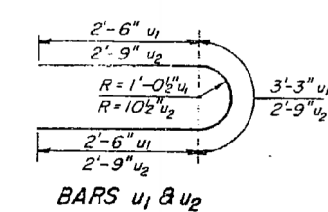
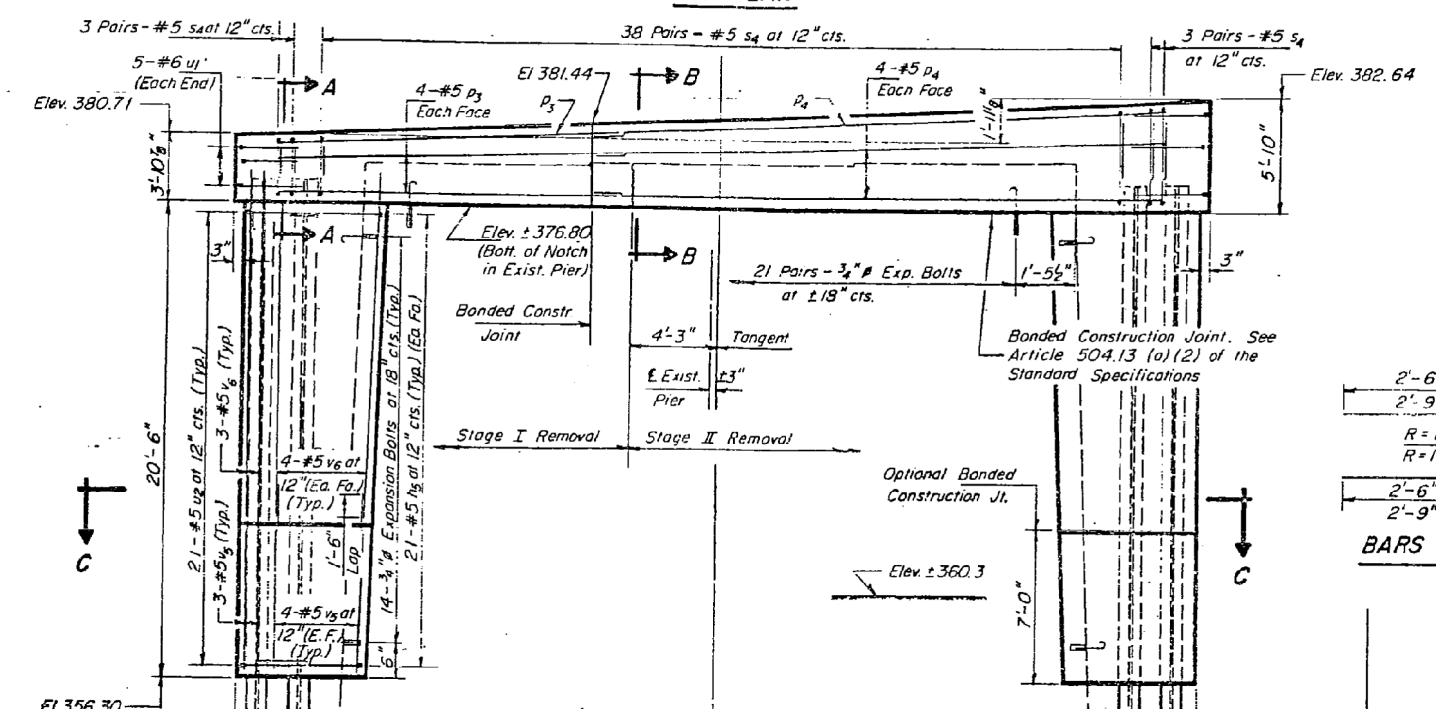
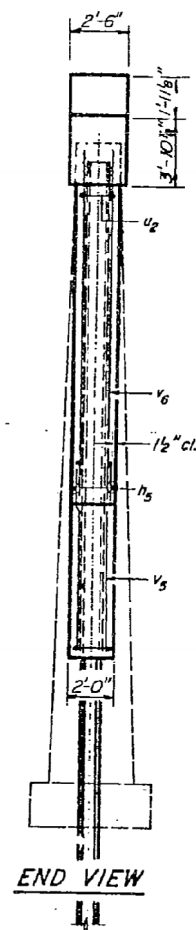
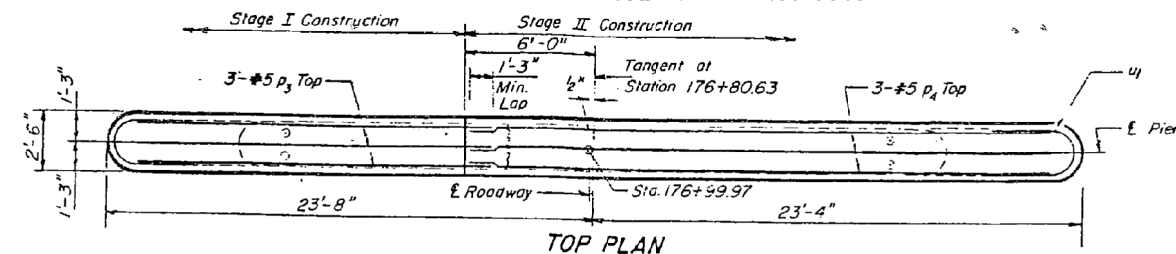


STATE OF ILLINOIS
DEPARTMENT OF TRANSPORTATION

S.S.L.	4BR	WHITE	103	47	9 SHEETS
P.L. 132					
P.L. 132					

incorporated into new construction
hatched area indicates concrete removal.
Space reinforcement in cap to miss dowel rods.



PILE DATA
Type: Steel (HP 10x42)
Capacity: Drive to Refusal
Est. Length: 71'-0"
No. Required: 3 + 1 Test Pile

DESIGNED	John A. Morris	EXAMINED	Aug 23 1976
CHECKED	J. J. Edwards	PASSED	
DRAWN	P. Barnett	APPROVED	
CHECKED	J. J. Edwards		

BILL OF MATERIAL

BAR	NO.	SIZE	LENGTH	SHAPE
n5	84	#5	4'-6"	
p3	11	#5	17'-9"	
p4	11	#5	28'-0"	
s4	98	#5	8'-6"	□
u1	10	#6	8'-3"	
u2	42	#5	8'-3"	
v3	22	#5	8'-6"	
v6	22	#5	15'-0"	
Class X Concrete			436	cu. yds.
Reinforcement Bars			2720	Pounds
Expansion Bolts (3/4")				Each
Steel Piles (HP 10x42)				Each
Test Piles Steel (HP 10x42)				Each
Concrete Removal				cu. yds.

PIER #2
F.A. RT. 132 SECTION 4BR
WHITE COUNTY
STA 176+80.63

FOR INFORMATION ONLY

STATE OF ILLINOIS
DEPARTMENT OF TRANSPORTATION

EXISTING STRUCTURE PLANS - FOR INFORMATION ONLY
STRUCTURE NO. 097-0007

SCALE: SHEET NO. 12 OF 12 SHEETS STA. TO STA.

F.A.P. RTE.	SECTION	COUNTY	TOTAL SHEETS	SHEET NO.
332	4B-1	WHITE	70	56
FED. ROAD DIST. NO.	ILLINOIS	FED. AID PROJECT AID	CONTRACT NO. 78154	



USER NAME = has	DESIGNED - ELH	REVISED -
ESCA PROJECT NO. 988.11	DRAWN - HAS	REVISED -
PLOT SCALE = 0.1667" / IN.	CHECKED - RDP	REVISED -
PLOT DATE = 10/31/2012 7:24:31 AM	DATE - 04/12	REVISED -