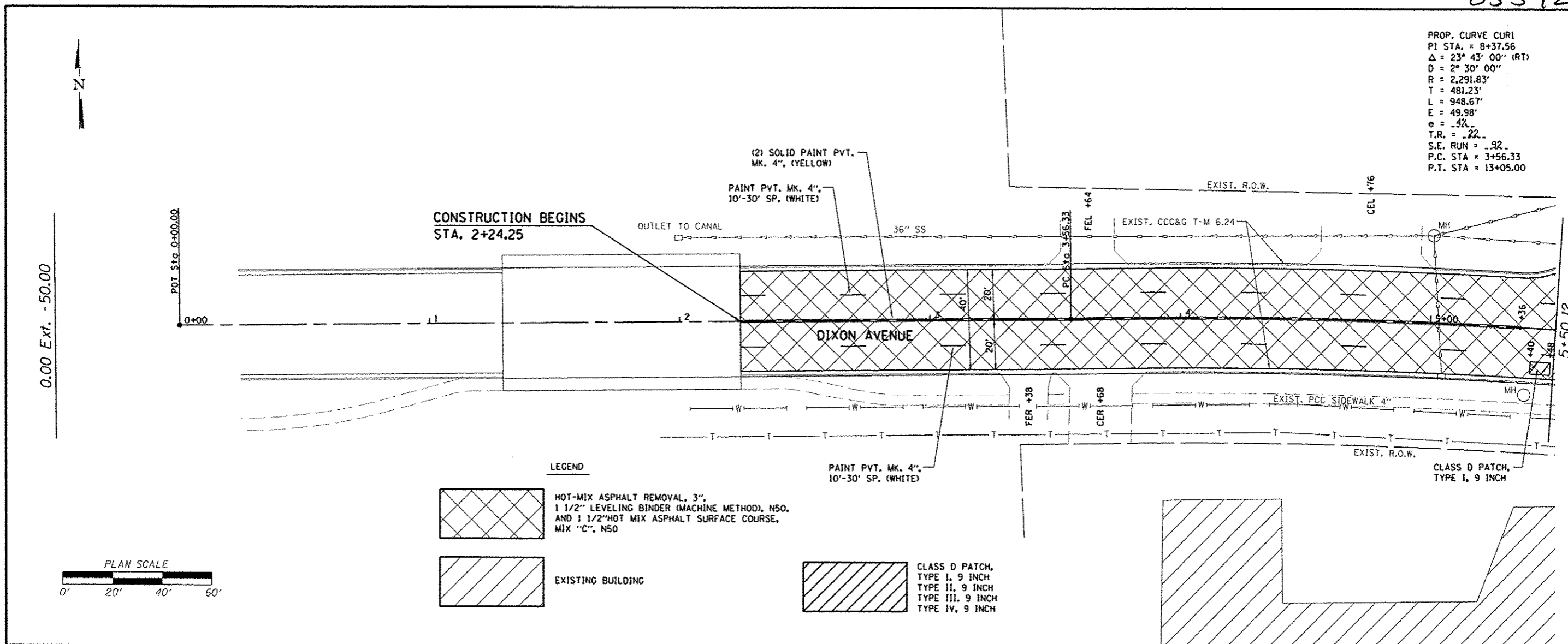


PROP. CURVE CURI
 PI STA. = 8+37.56
 $\Delta = 23^\circ 43' 00''$ (RT)
 $D = 2^\circ 30' 00''$
 $R = 2,291.83'$
 $T = 481.23'$
 $L = 948.67'$
 $E = 49.98'$
 $\theta = -4\%$
 $T.R. = .22$
 $S.E. RUN = .32$
 $P.C. STA = 3+56.33$
 $P.T. STA = 13+05.00$



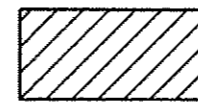
LEGEND



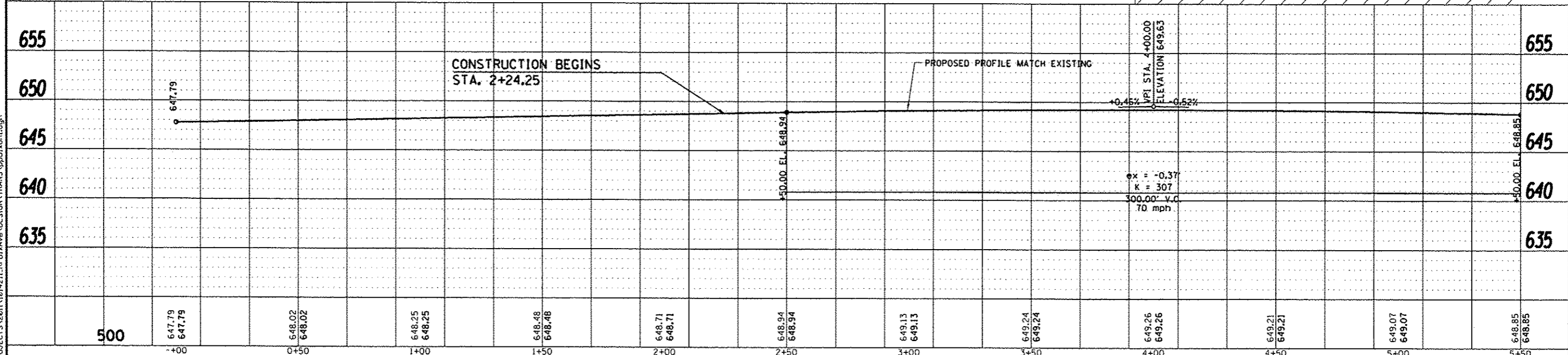
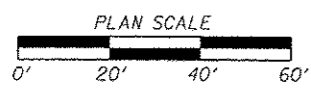
HOT-MIX ASPHALT REMOVAL, 3",
 1 1/2" LEVELING BINDER (MACHINE METHOD), N50,
 AND 1 1/2" HOT MIX ASPHALT SURFACE COURSE,
 MIX "C", N50



EXISTING BUILDING

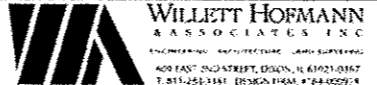


CLASS D PATCH,
 TYPE I, 9 INCH
 TYPE II, 9 INCH
 TYPE III, 9 INCH
 TYPE IV, 9 INCH



REVISION	DATE	BY	REMARKS	DRAWN	CHECKED	APPROVED	SECTION	COUNTY	TOTAL SHEETS	SHEET NO.
							DIXON AVENUE PLAN AND PROFILE	WHITESIDE	19	7

CITY OF ROCK FALLS
 DIXON AVENUE RESURFACING PROJECT
 2012



SECTION: 11-00136-00-RS
 COUNTY: WHITESIDE
 STA. 0+00 - STA. 5+50.12
 STA. 2+24.25 -- STA. 34+74.25

WHA #: 1014211
 DATE: DEC. 14, 2012

FILE = S:\PROJECTS\2011\1014211-RFD-Ave\DESIGN\TRANS\ppDixonLdgn