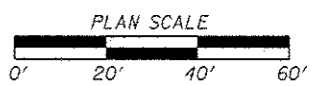
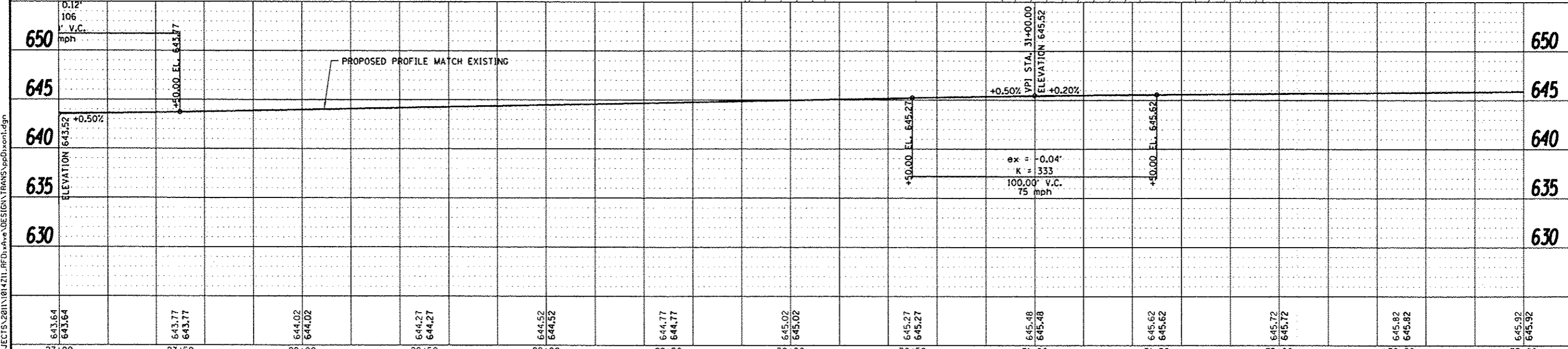


- LEGEND**
- HOT-MIX ASPHALT REMOVAL, 3", 1 1/2" LEVELING BINDER (MACHINE METHOD), N50, AND 1 1/2" HOT MIX ASPHALT SURFACE COURSE, MIX "C", N50
 - CLASS D PATCH, TYPE I, 9 INCH
TYPE II, 9 INCH
TYPE III, 9 INCH
TYPE IV, 9 INCH
 - EXISTING BUILDING

END HMA SURF. REM. & REPL.
STA. 32+37.00



*SEE CURB RAMP DETAIL SHEETS 14 & 15 FOR MORE INFORMATION



REVISION	DATE	BY	REMARKS	DRAWN	CHECKED	APPROVED	CITY OF ROCK FALLS DIXON AVENUE RESURFACING PROJECT 2012	WILLET HORMANN ASSOCIATES INC	DIXON AVENUE PLAN AND PROFILE STA. 2+24.25 - STA. 34+74.25	SECTION 11-00136-00-RS STA. 27+00 - STA. 33+00	COUNTY WHITESIDE	TOTAL SHEETS 19	SHEET NO. 12
										WHA #: 1014211	DATE: DEC. 14, 2012		

FILE = S:\PROJECTS\2011\1014211\RFD\Ave\DESIGN\TRANS\pp\dixon1.dgn