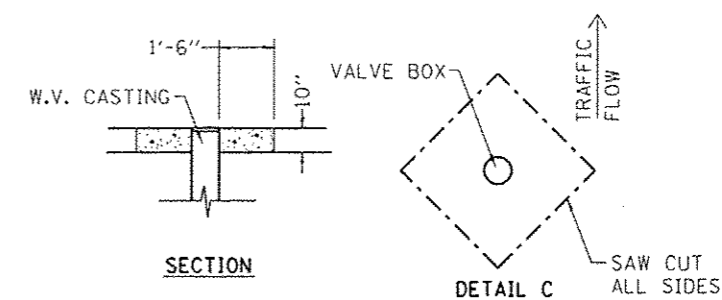


MANHOLE ADJUSTMENT DETAIL

1. ADJUST MANHOLE AFTER PAVING OPERATION IS COMPLETE.
2. THE CONTRACTOR SHALL MARK THE LOCATION OF EVERY MANHOLE PRIOR TO PAVING BY A METHOD APPROVED BY THE ENGINEER. THIS WORK SHALL BE INCIDENTAL TO THE MANHOLE ADJUSTMENT.
3. SAW CUT SQUARE OPENING AS SHOWN IN DETAIL A OR A CIRCULAR OPENING AS SHOWN IN DETAIL B WITH THE MANHOLE CENTERED IN THE MIDDLE OF THE OPENING.
4. REMOVE ALL PAVEMENT MATERIAL AND ADJUST THE MANHOLE TO WITHIN $\frac{5}{64}$ " BELOW THE TOP OF THE NEW PAVEMENT. IN NO CASE SHALL THE MANHOLE BE ABOVE THE PAVEMENT SURFACE. THE REMOVAL SHALL INCLUDE ALL TYPES OF MATERIALS, AND NO ADDITIONAL COMPENSATION WILL BE GIVEN DEPENDING ON THE TYPE OF MATERIAL. NO ADJUSTMENTS SHALL BE MADE WITH WOOD SCHIMS.
5. FILL VOID WITH MINIMUM OF 10" OF CONCRETE, THIS WORK SHALL MEET THE REQUIREMENTS OF ARTICLE 442.02 NOTE #1 AND ARTICLE 701.17(e)(2)&(3). TROWEL OFF CONCRETE FLUSH WITH NEW PAVEMENT AND BROOM FINISH. MANHOLE FRAME SHALL BE RECESSED FROM CONCRETE NO MORE THAN $\frac{3}{8}$ ".
6. IF THE ENGINEER DETERMINES A MANHOLE DOES NOT NEED ADJUSTED, THE CONTRACTOR SHALL PAVE AROUND THE MANHOLE AND NO ADJUSTMENT WILL BE PAID.
7. THE CONTRACTOR IS RESPONSIBLE FOR PROTECTING ALL MANHOLES BEING PAVED OVER OR AROUND. THE CONTRACTOR SHALL BE RESPONSIBLE FOR ALL DAMAGES OCCURRED DURING CONSTRUCTION.
8. CONTRACTOR SHALL CLEAN OUT ANY CONSTRUCTION DEBRIS INSIDE THE MANHOLE DURING THE ADJUSTMENT OF THE CASTING. THIS WORK SHALL BE INCIDENTAL TO THE MANHOLE ADJUSTMENT.



VALVE BOX ADJUSTMENT DETAIL

1. ADJUST WATER VALVE AFTER PAVING OPERATION IS COMPLETE.
2. THE CONTRACTOR SHALL MARK THE LOCATION OF EVERY WATER VALVE PRIOR TO PAVING BY A METHOD APPROVED BY THE ENGINEER. THIS WORK SHALL BE INCIDENTAL TO THE WATER VALVE ADJUSTMENT.
3. SAW CUT SQUARE OPENING AS SHOWN IN DETAIL A OR A CIRCULAR OPENING AS SHOWN IN DETAIL B WITH THE WATER VALVE CENTERED IN THE MIDDLE OF THE OPENING.
4. REMOVE ALL PAVEMENT MATERIAL AND ADJUST THE WATER VALVE TO WITHIN $\frac{5}{64}$ " BELOW THE TOP OF THE NEW PAVEMENT. IN NO CASE SHALL THE WATER VALVE BE ABOVE THE PAVEMENT SURFACE. THE REMOVAL SHALL INCLUDE ALL TYPES OF MATERIALS, AND NO ADDITIONAL COMPENSATION WILL BE GIVEN DEPENDING ON THE TYPE OF MATERIAL.
5. FILL VOID WITH MINIMUM OF 10" OF CONCRETE, THIS WORK SHALL MEET THE REQUIREMENTS OF ARTICLE 442.02 NOTE #1 AND ARTICLE 701.17(e)(2)&(3). TROWEL OFF CONCRETE FLUSH WITH NEW PAVEMENT AND BROOM FINISH. WATER VALVE BOX FRAME SHALL BE RECESSED FROM CONCRETE NO MORE THAN $\frac{3}{8}$ ".
6. IF THE ENGINEER DETERMINES A WATER VALVE DOES NOT NEED ADJUSTED, THE CONTRACTOR SHALL PAVE AROUND THE WATER VALVE AND NO ADJUSTMENT WILL BE PAID.
7. THE CONTRACTOR IS RESPONSIBLE FOR PROTECTING ALL WATER VALVES BEING PAVED OVER OR AROUND. THE CONTRACTOR SHALL BE RESPONSIBLE FOR ALL DAMAGES OCCURRED DURING CONSTRUCTION.
8. CONTRACTOR SHALL CLEAN OUT ANY CONSTRUCTION DEBRIS INSIDE THE WATER VALVE DURING THE ADJUSTMENT OF THE CASTING. THIS WORK SHALL BE INCIDENTAL TO THE WATER VALVE ADJUSTMENT.

FILE = S:\PROJECTS\2011\04211_RFD\XAVE.DESIGN\TRANS.TYPICAL.S.DGN

REVISION	DATE	BY	REMARKS	DRAWN D.L.B.	CITY OF ROCK FALLS DIXON AVENUE RESURFACING PROJECT 2012	WILLET HOFMANN ASSOCIATES INC ENGINEERING ARCHITECTURE LANDSCAPE 809 EAST 2ND STREET, DUNCAN, IL 61021-0167 P: 815-264-7381 DESIGN: 3183 FAX: 815-264-7382	DIXON AVENUE MANHOLE & WATER VALVE ADJUSTMENT DETAILS		SECTION 11-00149-00-FP	COUNTY WHITESIDE	TOTAL SHEETS	SHEET NO.	
				CHECKED J.R.R.			STA.	STA.					
				APPROVED G.F.S.			WHA #:	DATE:					
							1014211	DEC. 14, 2012			19	16	