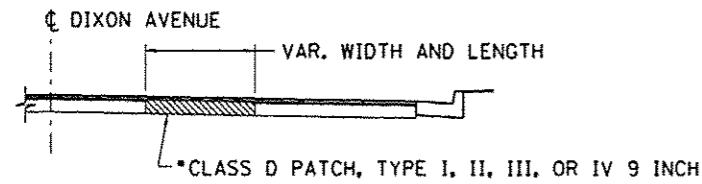


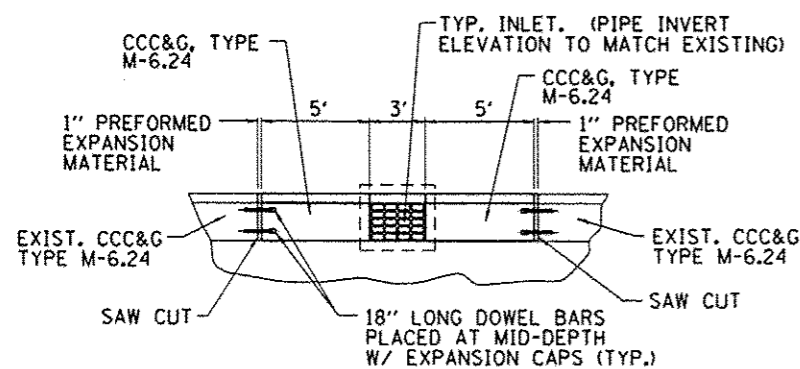
DIXON AVENUE - PATCHING DETAIL



***NOTE:**

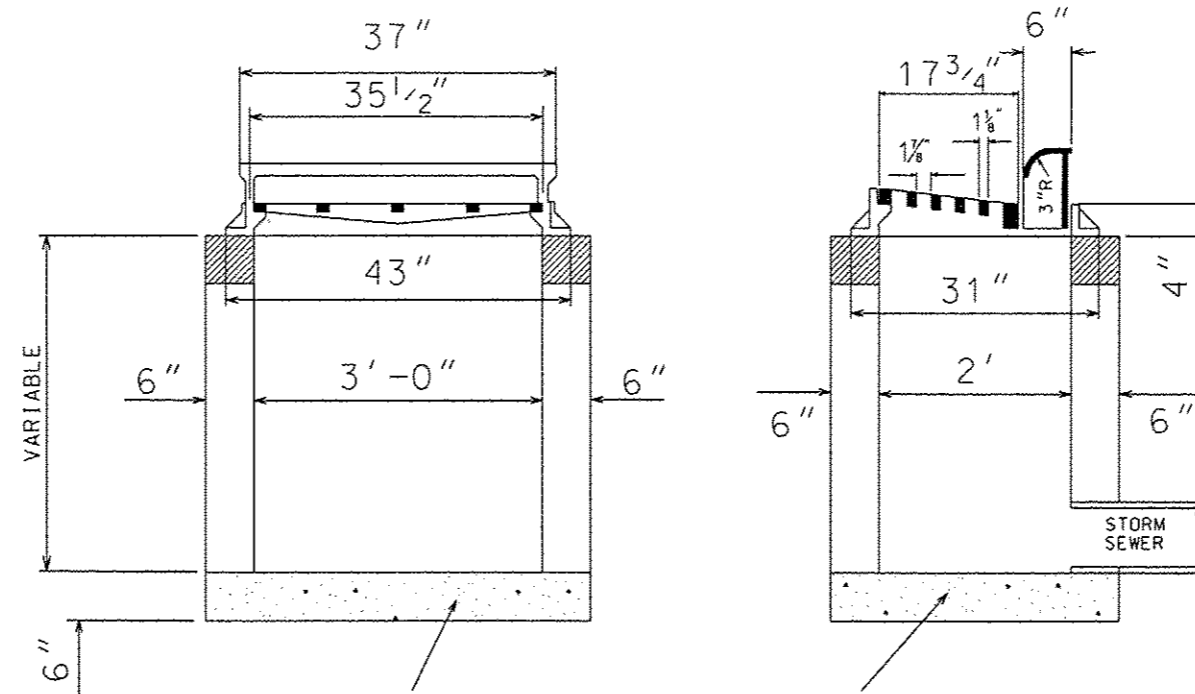
SEE SCHEDULES ON SHEETS 5 & 6 FOR LOCATIONS
 ADDITIONAL PATCHING MAY BE NECESSARY BASED ON ROADWAY CONDITION AFTER MILLING. QUANTITY AND LOCATIONS IF REQUIRED TO BE DETERMINED BY ENGINEER.

DIXON AVENUE - INLET DETAIL



FILE = S:\PROJECTS-2011\1014211_RF001\XAVE.DESIGN\TRANS.TYPICALS.DGN

INLETS, SPECIAL DETAIL



6" CLASS SI CONCRETE OR
 4" PRECAST REINF. CONC.
 SLAB ON 3" SAND CUSHION

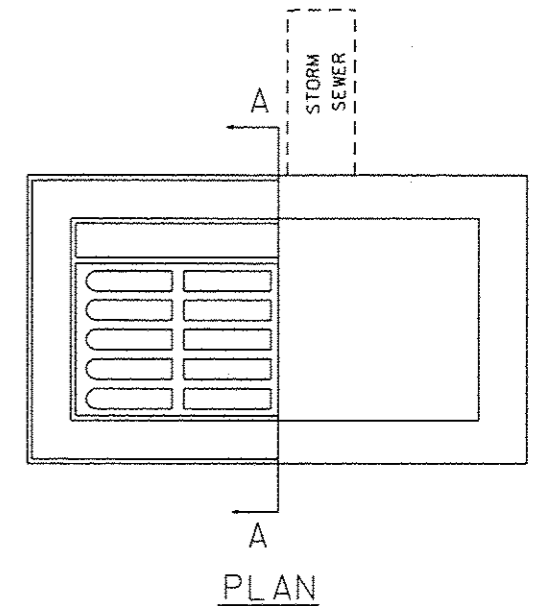
LONGITUDINAL SECTION

SECTION A-A

NOTES:

THE INLET SHALL BE CAST IN PLACE OR PRECAST, EXCEPT AS NOTED HERE, INLET SPECIAL SHALL BE CONSTRUCTED IN ACCORDANCE WITH SECTION 602 OF THE STANDARD SPECIFICATIONS. THE CONTRACT UNIT PRICE EACH FOR INLETS, SPECIAL SHALL INCLUDE THE COST OF FURNISHING AND INSTALLING THE INLET WITH SAND CUSHION IF REQUIRED. CLASS SI CONCRETE OR PRECAST CONCRETE SHALL BE USED THROUGHOUT. THE SIDEWALLS MAY BE BUILT AS PRECAST SEGMENTAL SECTIONS. THE HEIGHT OF THE BOX MAY BE CONSTRUCTED 6" SHORT TO ALLOW FOR FIELD ADJUSTMENTS. THE WALL ADJUSTMENTS SHALL BE MADE WITH CONCRETE BUILDING BRICK OR CLASS SI CONCRETE.

FRAME AND GRATE TO WEIGHT APPROXIMATELY 525 LBS.



PLAN

| REVISION | DATE | BY | REMARKS |
|----------|------|----|---------|
| | | | |
| | | | |
| | | | |

| |
|--------------------|
| DRAWN D.L.B. |
| CHECKED J.R.R. |
| APPROVED G.F.S. |

CITY OF ROCK FALLS
 DIXON AVENUE RESURFACING PROJECT
 2012



DIXON AVENUE
 PATCHING & INLETS, SPECIAL DETAIL

| SECTION | COUNTY | TOTAL SHEETS | SHEET NO. |
|----------------|---------------------|--------------|-----------|
| 11-00149-00-FP | WHITESIDE | 19 | 17 |
| STA. | STA. | | |
| WHA #: 1014211 | DATE: DEC. 14, 2012 | | |