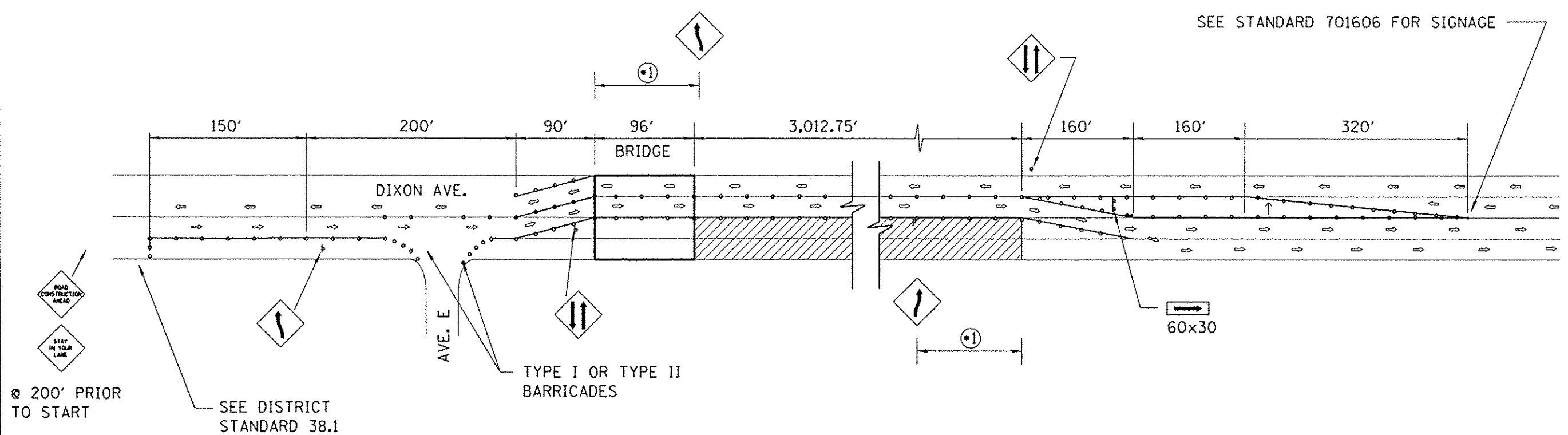
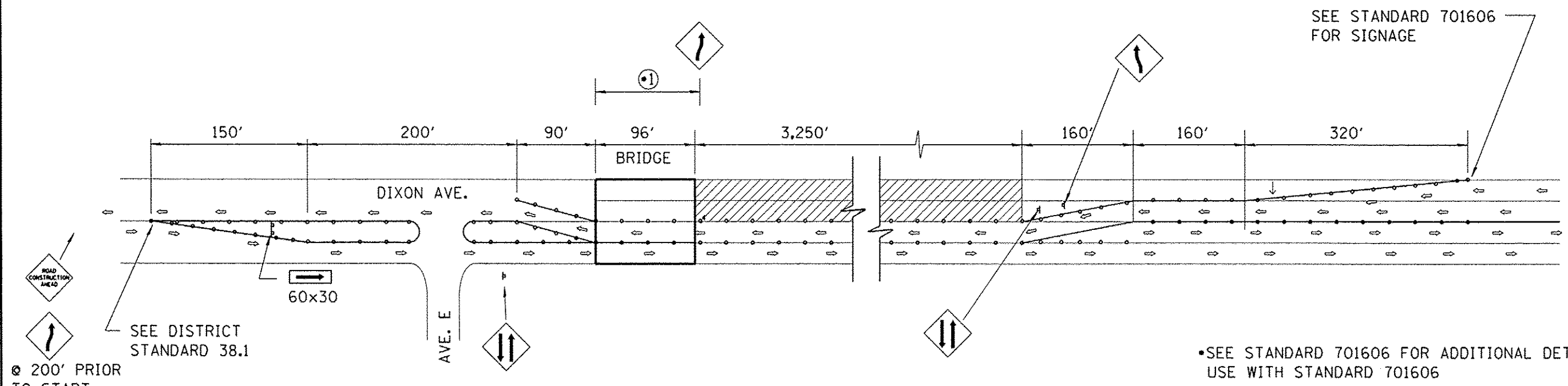


EASTBOUND LANES UNDER CONSTRUCTION



WESTBOUND LANES UNDER CONSTRUCTION



200' PRIOR TO START

SEE DISTRICT STANDARD 38.1

TYPE I OR TYPE II BARRICADES

60x30

200' PRIOR TO START

SEE DISTRICT STANDARD 38.1

SEE STANDARD 701606 FOR ADDITIONAL DETAILS USE WITH STANDARD 701606

FILE = S:\PROJECTS\2011\11-00136-00-RS\11-00136-00-RS-TRANS\coveretc.dgn

REVISION	DATE	BY	REMARKS

DRAWN	D.L.B.
CHECKED	J.R.R.
APPROVED	G.F.S.

CITY OF ROCK FALLS
DIXON AVENUE RESURFACING PROJECT
2012

DIXON AVENUE
TRAFFIC CONTROL DETAIL

SECTION	11-00136-00-RS	COUNTY	WHITESIDE	TOTAL SHEETS	19	SHEET NO.	18
STA.		STA.		DATE	DCE, 14, 2012		
WHA #:	1014211						