

1	COVER SHEET AND INDEX OF SHEETS
2	SUMMARY OF QUANTITIES
3	TYPICAL SECTIONS
4	TYPICAL SECTIONS AND MANHOLE & WATER VALVE ADJ. DETAILS
5-6	SCHEDULES & GENERAL NOTES
7-13	PLAN AND PROFILE SHEETS
14-15	CURB RAMP DETAILS
16	MANHOLE AND WATER VALVE ADJUSTMENT DETAILS
17	PAVEMENT PATCHING AND INLETS, SPECIAL DETAIL
18	TRAFFIC CONTROL DETAIL
19	DISTRICT STANDARDS 38.1, 40.2 & 91.2

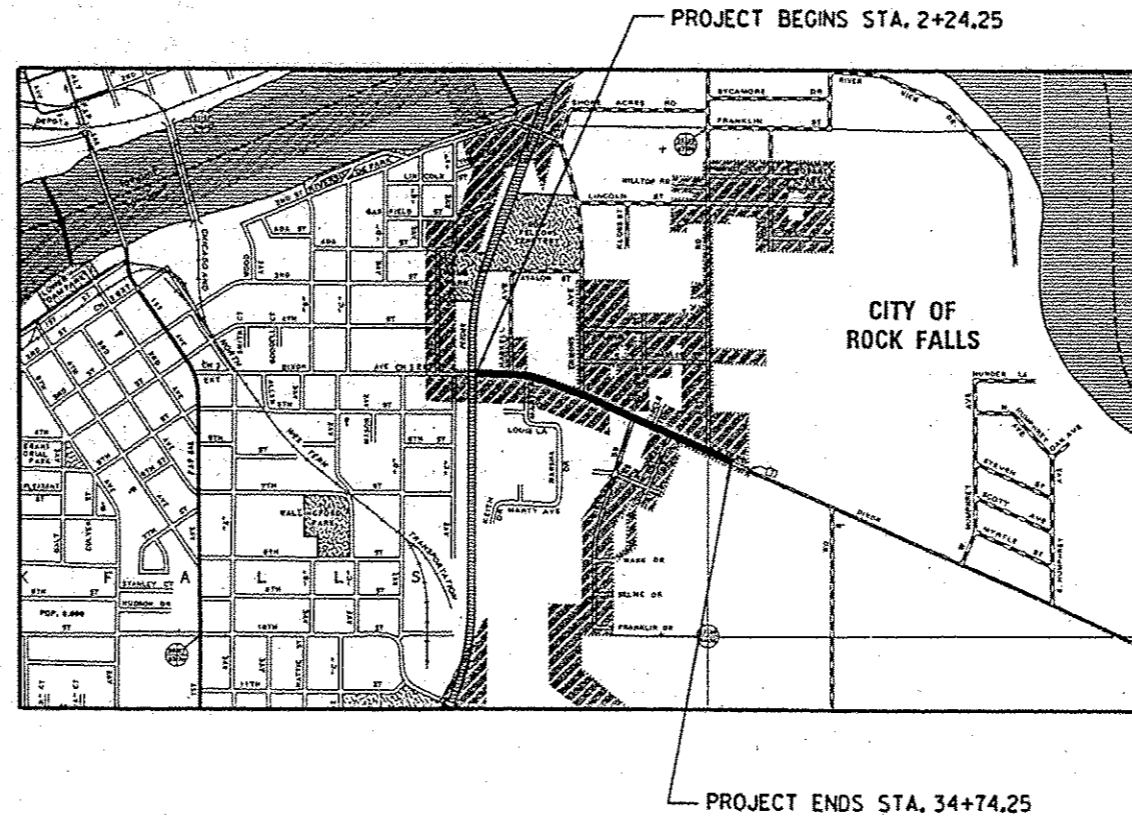
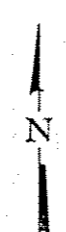
**STATE OF ILLINOIS
WHITESIDE COUNTY
PLANS FOR PROPOSED
LOCAL AGENCY IMPROVEMENTS
SECTION 11-00136-00-RS
FAU 5560 (DIXON AVENUE)
PROJECT M-5062(029)
JOB NO. C-92-121-12
CONTRACT NO. 85572**

STANDARDS

424001-07	PERPENDICULAR CURB RAMPS FOR SIDEWALKS
424006-01	DIAGONAL CURB RAMPS FOR SIDEWALKS
424011-01	CORNER PARALLEL CURB RAMPS FOR SIDEWALKS
442201-03	CLASS C AND D PATCHES
606001-05	CONCRETE CURB TYPE B AND COMBINATION CONCRETE CURB AND GUTTER
701101-03	OFF-RD OPERATIONS, MULTILANE, 15' (4.5 m) TO 24' (600 mm) FROM PAVEMENT EDGE
701427-01	LANE CLOSURE, MULTILANE, INTERMITTENT OR MOVING OPER., FOR SPEEDS < 40 MPH
701606-08	URBAN LANE CLOSURE, MULTILANE, 2W WITH MOUNTABLE MEDIAN
701801-05	SIDEWALK, CORNER OR CROSSWALK CLOSURE
701901-02	TRAFFIC CONTROL DEVICES
720001-01	SIGN PANEL MOUNTING DETAILS
720006-03	SIGN PANEL ERECTION DETAILS
720011-01	METAL POSTS FOR SIGNS, MARKERS & DELINEATORS
728001-01	TELESCOPING STEEL SIGN SUPPORT
729001-01	APPLICATIONS OF TYPES A & B METAL POSTS (FOR SIGNS & MARKERS)
780001-03	TYPICAL PAVEMENT MARKINGS

UTILITY CONTACTS

NAME AND ADDRESS OF UTILITIES	TYPE
COMCAST ATTN: MIKE OWENS 4450 KISHWAUKEE ST. ROCKFORD, IL 61109 (815) 509-7876	CABLE TV
SBC / AT&T ATTN: WILLIAM CONOVER 2315 N. KNOXVILLE AVE. FLOOR #2 PEORIA, IL 61604 (309) 686-3317	TELEPHONE
ROCK FALLS ELECTRIC 1109 INDUSTRIAL PARK ROAD ROCK FALLS, IL 61071 (815) 622-1145	ELECTRIC
NICOR GAS ATTN: CONNIE LANE 1844 FERRY ROAD NAPERVILLE, IL 60563 (630) 388-2362	GAS
ROCK FALLS DEPARTMENT OF PUBLIC WORKS 603 W. 10TH. ST. ROCK FALLS, IL 61071 (815) 622-1106	TELE-COMMUNICATIONS

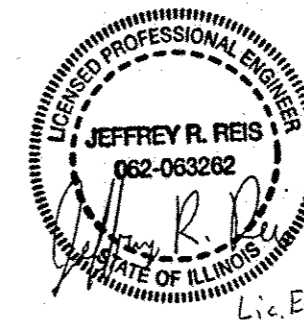
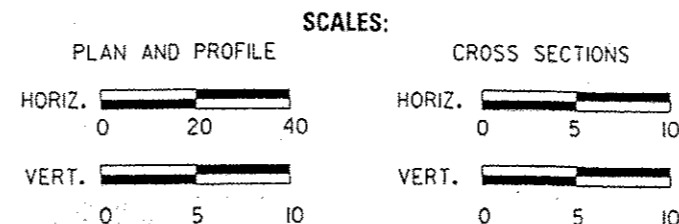


DESIGN CRITERIA

DESIGN SPEED: 30 MPH			
FUNCTIONAL CLASSIFICATION	HIGHWAY	ADT (2013)	% TRUCKS
MINOR ARTERIAL	DIXON AVENUE	6200	12

LOCATION MAP

NET LENGTH OF PROJECT = 3250 FEET = 0.62 MILES



WILLETT HOFMANN & ASSOCIATES INC
ENGINEERING ARCHITECTURE LAND SURVEYING
809 EAST 2ND STREET, DIXON, IL 61021-0367
T: 815-284-3381 DESIGN FIRM: #184-000918

CITY OF ROCK FALLS	
APPROVED	<u>12-14-13</u> DATE <i>[Signature]</i> CITY OF ROCK FALLS MAYOR
PASSED	<u>JAN. 11, 2013</u> DATE <i>[Signature]</i> DISTRICT 2 LOCAL ROADS ENGINEER
RELEASED FOR BID BASED ON LIMITED REVIEW	<u>JAN. 11, 2013</u> DATE <i>[Signature]</i> DEPUTY DIRECTOR OF HIGHWAYS, REGION 2 ENGINEER

SUMMARY OF QUANTITIES

CONSTRUCTION TYPE CODE: 0005

ITEM NO.	CODE NO.	ITEM	UNIT	QUANTITY
1	20201200*	REMOVAL AND DISPOSAL OF UNSUITABLE MATERIAL	CU YD	60
2	30300011*	AGGREGATE SUBGRADE IMPROVEMENT	TON	123
3	35101400*	AGGREGATE BASE COURSE, TYPE B	TON	40
4	40600100*	BITUMINOUS MATERIALS (PRIME COAT)	GALLON	1,445
5	40600300*	AGGREGATE (PRIME COAT)	TON	14
6	40600625	LEVELING BINDER (MACHINE METHOD), N50	TON	1,246
7	40600990	TEMPORARY RAMP	SQ YD	109
8	40603310	HOT-MIX ASPHALT SURFACE COURSE, MIX "C", N50	TON	1,296
9	42400200	PORTLAND CEMENT CONCRETE SIDEWALK 5 INCH	SQ FT	834
10	42400800	DETECTABLE WARNINGS	SQ FT	73
11	44000161	HOT-MIX ASPHALT SURFACE REMOVAL, 3"	SQ YD	14,447
12	44000500	COMBINATION CURB AND GUTTER REMOVAL	FOOT	317
13	44000600	SIDEWALK REMOVAL	SQ FT	741
14	44201749*	CLASS D PATCHES, TYPE I, 9 INCH	SQ YD	13
15	44201753*	CLASS D PATCHES, TYPE II, 9 INCH	SQ YD	22
16	44201757*	CLASS D PATCHES, TYPE III, 9 INCH	SQ YD	43
17	44201759*	CLASS D PATCHES, TYPE IV, 9 INCH	SQ YD	276
18	56109210*	WATER VALVES TO BE ADJUSTED	EACH	2
19	60255500*	MANHOLES TO BE ADJUSTED	EACH	5
20	60610400*	COMBINATION CONCRETE CURB AND GUTTER, TYPE M-6.24	FOOT	317
21	67100100	MOBILIZATION	L SUM	1
22	70300100	SHORT TERM PAVEMENT MARKING	FOOT	300
23	70301000	WORK ZONE PAVEMENT MARKING REMOVAL	SQ FT	100
Δ 24	78000200	THERMOPLASTIC PAVEMENT MARKING LINE 4"	FOOT	6,918
25	X0322102*	TEMPORARY SIDEWALK RAMP	EACH	8
26	X6024240*	INLETS, SPECIAL	EACH	9
27	X6028300*	INLETS TO BE REMOVED, SPECIAL	EACH	9
28	X7010216*	TRAFFIC CONTROL AND PROTECTION, (SPECIAL)	L SUM	1

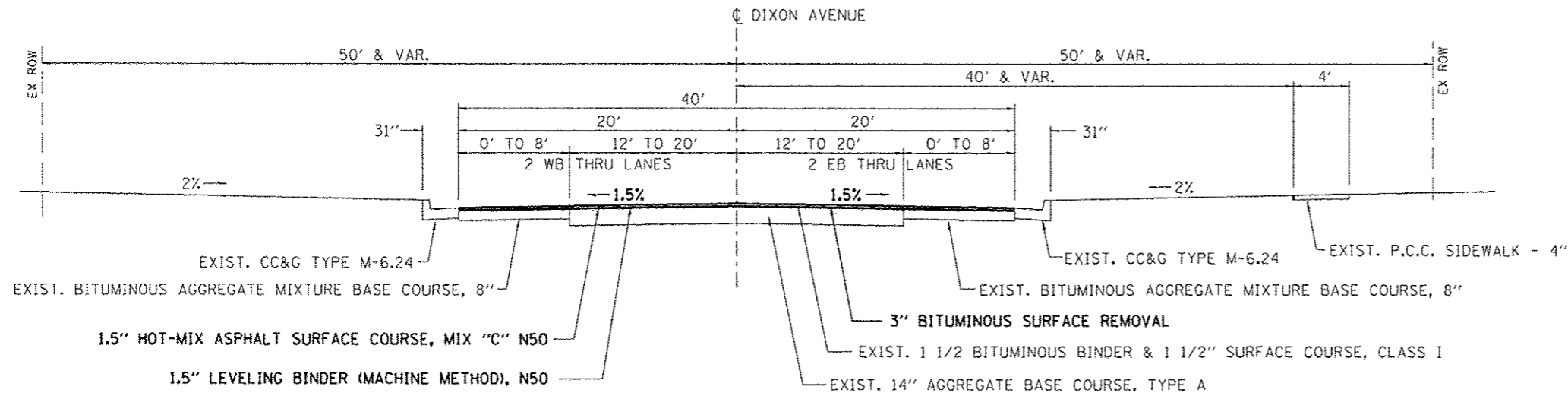
*REQUIRES SPECIAL PROVISION, GENERAL NOTE OR DETAIL DRAWING

Δ SPECIALTY ITEMS

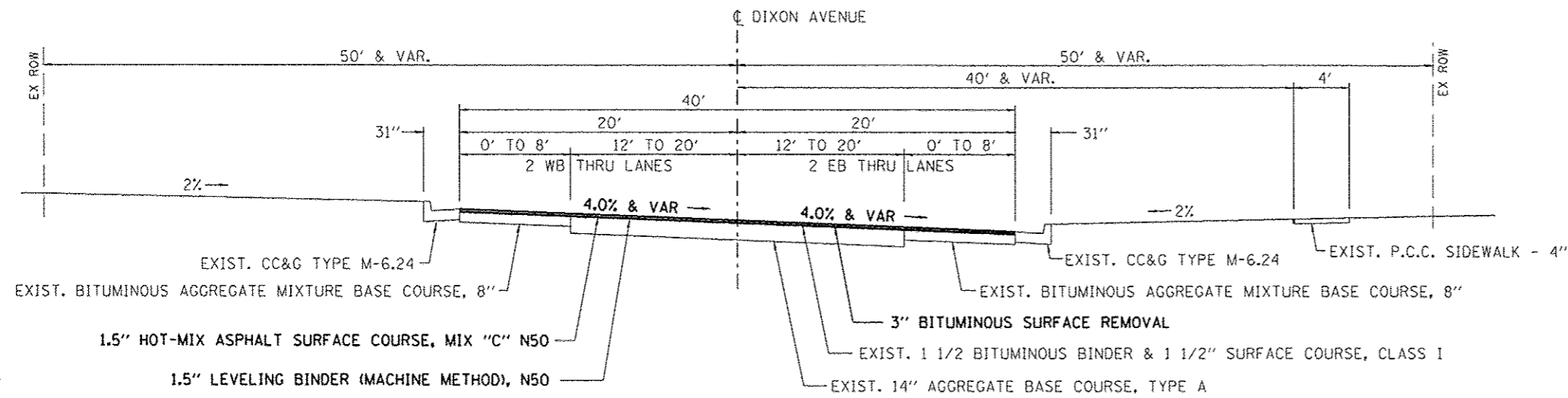
FILE = S:\PROJECTS\2011\1814211.RFD\sheet\DESIGN\TRANS\cover.ctb.dgn

REVISION	DATE	BY	REMARKS	DRAWN D.L.B.	CITY OF ROCK FALLS DIXON AVENUE RESURFACING PROJECT 2012	 WILLET HOFMANN ASSOCIATES INC. 809 EAST 2ND STREET, DAVENP, IL 61702-0267 P. 815-284-3141 F. 815-284-3142 W. WWW.WHAINC.COM	DIXON AVENUE SUMMARY OF QUANTITIES		SECTION 11-00136-00-RS	COUNTY WHITESIDE	TOTAL SHEETS	SHEET NO.
				CHECKED J.R.R.			STA. 2+24.25 - 34+74.25		STA.	STA.	19	2
				APPROVED G.E.S.			WHA #: 1014211		DATE: DEC. 14, 2012			

TYPICAL SECTIONS



DIXON AVENUE - TYPICAL SECTION
STA. 2+24.25 TO 2+72.69



DIXON AVENUE - TYPICAL SECTION
STA. 2+72.69 TO 5+00

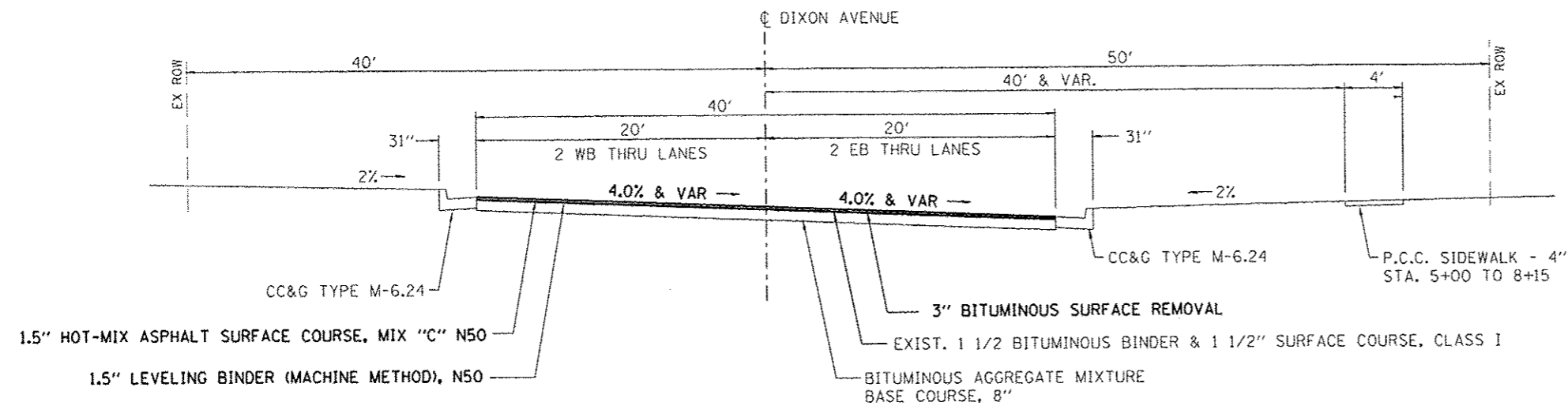
SUPERELEVATION RATES

STATION	LEFT SUPER	RIGHT SUPER	REMARKS
2+72.69	-1.50%	-1.50%	NORMAL CROWN
2+94.69	0.00%	-1.50%	
3+16.69	1.50%	-1.50%	
3+56.33	2.68%	-2.68%	PC
3+86.69	4.00%	-4.00%	FULL SUPER
12+74.64	4.00%	-4.00%	FULL SUPER
13+05.00	2.68%	-2.68%	PT
13+44.64	1.50%	-1.50%	
13+66.64	0.00%	-1.50%	
13+88.64	-1.50%	-1.50%	NORMAL CROWN

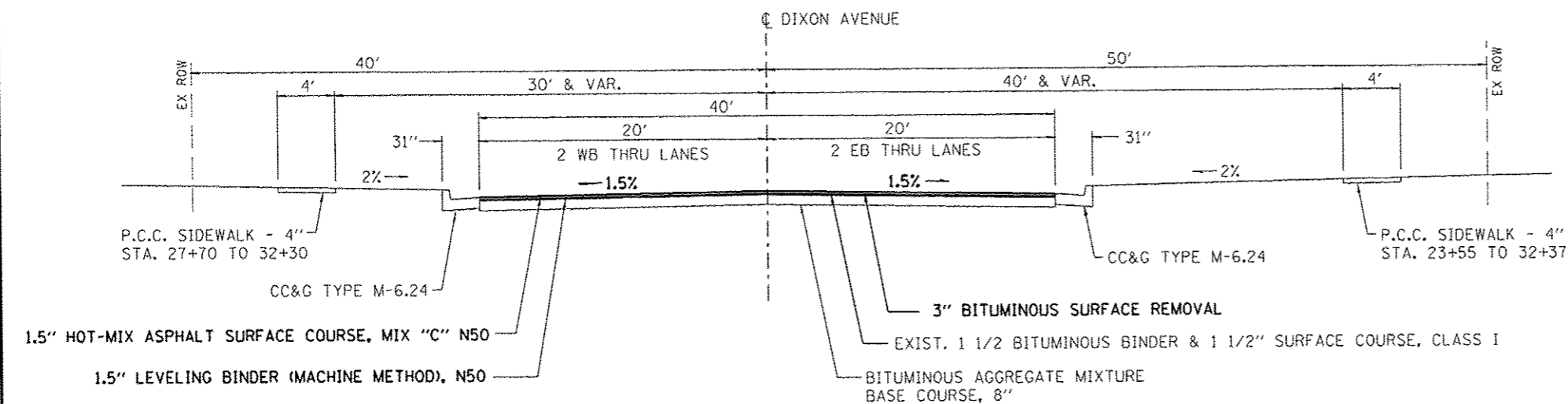
FILE: S:\PROJECTS\2011\1014211_RFD\DIXAVE.DESIGN\TRANS.TYPICAL.S.DGN

<table border="1"> <thead> <tr> <th>REVISION</th> <th>DATE</th> <th>BY</th> <th>REMARKS</th> </tr> </thead> <tbody> <tr> <td> </td> <td> </td> <td> </td> <td> </td> </tr> </tbody> </table>	REVISION	DATE	BY	REMARKS					<table border="1"> <tr> <td>DRAWN</td> <td>D.L.B.</td> </tr> <tr> <td>CHECKED</td> <td>J.R.R.</td> </tr> <tr> <td>APPROVED</td> <td>G.F.S.</td> </tr> </table>	DRAWN	D.L.B.	CHECKED	J.R.R.	APPROVED	G.F.S.	<p>CITY OF ROCK FALLS DIXON AVENUE RESURFACING PROJECT 2012</p>	<p>WILLET HOFMANN ASSOCIATES INC ENGINEERING ARCHITECTURE LANDSCAPE ARCHITECTURE 109 EAST DIX STREET, ROCKFALL, IL 61071-0367 P. 815.254.3347 F. 815.254.3349</p>	<p>DIXON AVENUE TYPICAL SECTIONS STA. 2+24.25 - 32+37.00</p>	<table border="1"> <tr> <td>SECTION</td> <td>COUNTY</td> <td>TOTAL SHEETS</td> <td>SHEET NO.</td> </tr> <tr> <td>11-00149-00-FP</td> <td>WHITESIDE</td> <td>19</td> <td>3</td> </tr> </table>	SECTION	COUNTY	TOTAL SHEETS	SHEET NO.	11-00149-00-FP	WHITESIDE	19	3
REVISION	DATE	BY	REMARKS																								
DRAWN	D.L.B.																										
CHECKED	J.R.R.																										
APPROVED	G.F.S.																										
SECTION	COUNTY	TOTAL SHEETS	SHEET NO.																								
11-00149-00-FP	WHITESIDE	19	3																								
<p>WHA #: 1014211 DATE: DEC. 14, 2012</p>				<p>DATE: DEC. 14, 2012</p>																							

TYPICAL SECTIONS



DIXON AVENUE - TYPICAL SECTION
STA. 5+00 TO 13+88.64



DIXON AVENUE - TYPICAL SECTION
STA. 13+88.64 TO 32+37

PAVEMENT MIXTURE REQUIREMENTS

	CONSTRUCTION	
	SURFACE & LB	BOT. OF PATCH
PG:	PG 64-22	PG 64-22
DESIGN AIR VOIDS	4.0 @ N50	4.0 @ N50
MIXTURE COMPOSITION (GRADATION MIXTURE)	IL 9.5	IL 19.0
FRICTION AGGREGATE	C	NA

PAVEMENT STRUCTURAL DESIGN
DIXON AVENUE

STRUCTURAL DESIGN TRAFFIC (S.D.T.) = YEAR 2022
 CLASS I STREET

P.V. 6332
 S.U. 504
 M.U. 359 } 7195 ADT

USE
 1 1/2" HOT-MIX ASPHALT SURFACE COURSE, MIX "C" N50
 1 1/2" LEVELING BINDER (MACHINE METHOD), N50

FILE: S:\PROJECTS\2011\1014211_RFD\TXAVE.DESIGN\TRANS\TYPICAL.S.DGN

REVISION	DATE	BY	REMARKS

DRAWN D.L.B.
 CHECKED J.R.R.
 APPROVED G.F.S.

CITY OF ROCK FALLS
DIXON AVENUE RESURFACING PROJECT
 2012



DIXON AVENUE
TYPICAL SECTIONS

SECTION	COUNTY	TOTAL SHEETS	SHEET NO.
11-00149-00-FP	WHITESIDE	19	4
STA. 2+24.25 - 32+37.00	DATE: DEC. 14, 2012		

REMOVAL AND DISPOSAL OF UNSUITABLE MATERIAL		
STATION	CU YD	REMARKS
DIXON AVENUE		
CONTINGENCY ITEM	60	
PROJECT TOTAL	60	

AGGREGATE SUBGRADE IMPROVEMENT		
STATION	TON	REMARKS
DIXON AVENUE		
CONTINGENCY ITEM	123	
PROJECT TOTAL	123	

AGGREGATE BASE COURSE, TYPE B		
STATION	TON	REMARKS
DIXON AVENUE		
CONTINGENCY ITEM	40	
PROJECT TOTAL	40	

BITUMINOUS MATERIALS (PRIME COAT)		
STATION	GALLON	REMARKS
DIXON AVENUE		
2+24.25 TO 32+37.00	1,445	0.1 GAL. / SQ. YD.
PROJECT TOTAL	1,445	

AGGREGATE (PRIME COAT)		
STATION	TON	REMARKS
DIXON AVENUE		
2+24.25 TO 32+37.00	14	2 LBS. / SQ. YD.
PROJECT TOTAL	14	

LEVELING BINDER (MACHINE METHOD), N50		
STATION	TON	REMARKS
DIXON AVENUE		
2+24.25 TO 32+37.00	1,246	1.5"
PROJECT TOTAL	1,246	

TEMPORARY RAMP		
STATION	SO YD	REMARKS
DIXON AVENUE		
2+24.25	13	PROJECT START
LT 5+85	9	HASKELL AVENUE
RT 8+27	11	MARSHA LANE
LT 13+44	10	EMMONS AVENUE
RT 19+40	10	WIKER DRIVE
LT 21+20	11	CIRCLE DRIVE
RT 23+36	10	HEINZE DRIVE
LT 27+65	12	MARTIN ROAD
32+37.00	23	PROJECT END
PROJECT TOTAL	109	

HOT-MIX ASPHALT SURFACE COURSE, MIX "C", N50		
STATION	TON	REMARKS
DIXON AVENUE		
2+24.25 TO 32+37.00	1,246	1.5"
CONTINGENCY ITEM	50	PATCHES - STA. 2+24.25 TO 5+00 (ADDITIONAL 1")
PROJECT TOTAL	1,296	

PORTLAND CEMENT CONCRETE SIDEWALK 5 INCH		
STATION	SO FT	REMARKS
DIXON AVENUE		
RT 7+75 TO 8+15	198	SW INTERSECTION @ MARSHA LANE
RT 8+54 TO 8+60	32	SE INTERSECTION @ MARSHA LANE
RT 23+08 TO 23+16	28	SW INTERSECTION @ HEINZE DRIVE
RT 23+57 TO 23+70	50	SE INTERSECTION @ HEINZE DRIVE
LT 27+02 TO 27+20	157	NW INTERSECTION @ MARTIN ROAD
LT 27+71 TO 27+88	112	NE INTERSECTION @ MARTIN ROAD
LT 32+18 TO 32+31	52	NW INTERSECTION @ SUB-DIVISION ENTRANCE
LT 32+68 TO 32+93	205	NE INTERSECTION @ SUB-DIVISION ENTRANCE
PROJECT TOTAL	834	

DETECTABLE WARNINGS		
STATION	SO FT	REMARKS
DIXON AVENUE		
RT 8+12	10	SW INTERSECTION @ MARSHA LANE
RT 8+57	10	SE INTERSECTION @ MARSHA LANE
RT 23+11	8	SW INTERSECTION @ HEINZE DRIVE
RT 23+61	8	SE INTERSECTION @ HEINZE DRIVE
LT 27+17	8	NW INTERSECTION @ MARTIN ROAD
LT 27+73	11	NE INTERSECTION @ MARTIN ROAD
LT 32+26	8	NW INTERSECTION @ SUB-DIVISION ENTRANCE
LT 32+80	10	NE INTERSECTION @ SUB-DIVISION ENTRANCE
PROJECT TOTAL	73	

HOT-MIX ASPHALT SURFACE REMOVAL, 3"		
STATION	SO YD	REMARKS
DIXON AVENUE		
2+24.25 TO 32+37.00	14,447	
PROJECT TOTAL	14,447	

COMBINATION CURB AND GUTTER REMOVAL		
STATION	FOOT	REMARKS
DIXON AVENUE		
RT 8+10 TO 8+18	16	SW INTERSECTION @ MARSHA LANE
RT 8+51 TO 8+62	21	SE INTERSECTION @ MARSHA LANE
RT 9+28 TO 9+41	13	CURB REPLACEMENT @ INLET
LT 10+68 TO 10+81	13	CURB REPLACEMENT @ INLET
LT 13+63 TO 13+76	13	CURB REPLACEMENT @ INLET
RT 13+63 TO 13+76	13	CURB REPLACEMENT @ INLET
RT 22+86 TO 23+21	44	SW INTERSECTION @ HEINZE DRIVE
LT 22+93 TO 23+06	13	CURB REPLACEMENT @ INLET
RT 23+52 TO 23+64	19	SE INTERSECTION @ HEINZE DRIVE
RT 26+93 TO 27+06	13	CURB REPLACEMENT @ INLET
LT 27+02 TO 27+25	41	NW INTERSECTION @ MARTIN ROAD
LT 27+50 TO 27+55	13	CURB REPLACEMENT @ INLET
LT 27+66 TO 27+78	20	NE INTERSECTION @ MARTIN ROAD
LT 31+42 TO 31+55	13	CURB REPLACEMENT @ INLET
RT 31+44 TO 31+57	13	CURB REPLACEMENT @ INLET
LT 32+25 TO 32+35	19	NW INTERSECTION @ SUB-DIVISION ENTRANCE
LT 32+71 TO 32+84	20	NE INTERSECTION @ SUB-DIVISION ENTRANCE
PROJECT TOTAL	317	

SIDEWALK REMOVAL		
STATION	SO FT	REMARKS
DIXON AVENUE		
RT 7+75 TO 8+15	198	SW INTERSECTION @ MARSHA LANE
RT 23+57 TO 23+70	50	SE INTERSECTION @ HEINZE DRIVE
LT 27+02 TO 27+20	118	NW INTERSECTION @ MARTIN ROAD
LT 27+71 TO 27+88	118	NE INTERSECTION @ MARTIN ROAD
LT 32+18 TO 32+31	52	NW INTERSECTION @ SUB-DIVISION ENTRANCE
LT 32+68 TO 32+93	205	NE INTERSECTION @ SUB-DIVISION ENTRANCE
PROJECT TOTAL	741	

CLASS D PATCHES, TYPE I, 9 INCH		
STATION	SO YD	REMARKS
DIXON AVENUE		
RT 5+40 TO 5+84	4.0	LESS THAN 5 SQ. YD.
LT 28+45 TO 28+52	4.0	LESS THAN 5 SQ. YD.
LT 31+20 TO 31+27	4.0	LESS THAN 5 SQ. YD.
CONTINGENCY QUANTITY	0.6	5% OF TOTAL
PROJECT TOTAL	12.6	

CLASS D PATCHES, TYPE II, 9 INCH		
STATION	SO YD	REMARKS
DIXON AVENUE		
LT 9+42 TO 9+54	8.0	5 SQ. YD. OR MORE BUT LESS THAN 15 SQ. YD.
LT 23+90 TO 24+00	13.0	5 SQ. YD. OR MORE BUT LESS THAN 15 SQ. YD.
CONTINGENCY QUANTITY	1.1	5% OF TOTAL
PROJECT TOTAL	22.1	

FILE = S:\PROJECTS\2011\1814211.RFD\A\DESIGN\TRANS\cover.ctb

REVISION	DATE	BY	REMARKS

DRAWN	D.L.B.
CHECKED	J.R.R.
APPROVED	G.F.S.

CITY OF ROCK FALLS
DIXON AVENUE RESURFACING PROJECT
2012



DIXON AVENUE SCHEDULES
STA. 2+24.25 - 34+74.25

SECTION	11-00136-00-R5	COUNTY	WHITESIDE	TOTAL SHEETS	19	SHEET NO.	5
STA.		STA.		WHA #:	1014211	DATE:	DEC. 14, 2012

CLASS D PATCHES, TYPE III, 9 INCH		
STATION	SO YD	REMARKS
DIXON AVENUE		
LT 18+40 TO 18+58	21.0	15 SQ. YD. OR MORE BUT LESS THAN 25 SQ. YD.
LT 21+65 TO 21+83	20.0	15 SQ. YD. OR MORE BUT LESS THAN 25 SQ. YD.
CONTINGENCY QUANTITY	2.1	5% OF TOTAL
PROJECT TOTAL	43.1	

CLASS D PATCHES, TYPE IV, 9 INCH		
STATION	SO YD	REMARKS
DIXON AVENUE		
LT 32+37 TO 34+74	263.0	25 SQ. YD. OR MORE
CONTINGENCY QUANTITY	13.2	5% OF TOTAL
PROJECT TOTAL	276.2	

WATER VALVES TO BE ADJUSTED		
STATION	EACH	REMARKS
DIXON AVENUE		
CONTINGENCY ITEM	2	
PROJECT TOTAL	2	

MANHOLES TO BE ADJUSTED		
STATION	EACH	REMARKS
DIXON AVENUE		
LT 21+31	1	
RT 23+43	1	
LT 27+31	1	
LT 27+35	1	
LT 27+52	1	
PROJECT TOTAL	5	

COMBINATION CONCRETE CURB AND GUTTER, TYPE M-6.24		
STATION	FOOT	REMARKS
DIXON AVENUE		
RT 8+10 TO 8+18	16	SW INTERSECTION @ MARSHA LANE
RT 8+51 TO 8+62	21	SE INTERSECTION @ MARSHA LANE
RT 9+28 TO 9+41	13	CURB REPLACEMENT @ INLET
LT 10+68 TO 10+81	13	CURB REPLACEMENT @ INLET
LT 13+63 TO 13+76	13	CURB REPLACEMENT @ INLET
RT 13+63 TO 13+76	13	CURB REPLACEMENT @ INLET
RT 22+86 TO 23+21	44	SW INTERSECTION @ HEINZE DRIVE
LT 22+93 TO 23+06	13	CURB REPLACEMENT @ INLET
RT 23+52 TO 23+64	19	SE INTERSECTION @ HEINZE DRIVE
RT 26+93 TO 27+06	13	CURB REPLACEMENT @ INLET
LT 27+02 TO 27+25	41	NW INTERSECTION @ MARTIN ROAD
LT 27+50 TO 27+55	13	CURB REPLACEMENT @ INLET
LT 27+66 TO 27+78	20	NE INTERSECTION @ MARTIN ROAD
LT 31+42 TO 31+55	13	CURB REPLACEMENT @ INLET
RT 31+44 TO 31+57	13	CURB REPLACEMENT @ INLET
LT 32+25 TO 32+35	19	NW INTERSECTION @ SUB-DIVISION ENTRANCE
LT 32+71 TO 32+84	20	NE INTERSECTION @ SUB-DIVISION ENTRANCE
PROJECT TOTAL	317	

SHORT TERM PAVEMENT MARKING		
STATION	FOOT	REMARKS
DIXON AVENUE		
	300	Centerline
PROJECT TOTAL	300	

WORK ZONE PAVEMENT MARKING REMOVAL		
STATION	SO FT	REMARKS
DIXON AVENUE		
	100	
PROJECT TOTAL	100	

THERMOPLASTIC PAVEMENT MARKING LINE 4"		
STATION	FOOT	REMARKS
DIXON AVENUE		
LT 2+24.25 TO 34+74.25	820	WEST BOUND 10'-30' SP (WHITE)
RT 2+24.25 TO 32+37.00	760	EAST BOUND 10'-30' SP (WHITE)
2+24.25 TO 5+36	624	SOLID DBL @ CL (YELLOW)
6+24 TO 8+00	352	SOLID DBL @ CL (YELLOW)
8+69 TO 12+77	816	SOLID DBL @ CL (YELLOW)
13+67 TO 19+03	1072	SOLID DBL @ CL (YELLOW)
19+78 TO 20+77	198	SOLID DBL @ CL (YELLOW)
21+63 TO 22+94	262	SOLID DBL @ CL (YELLOW)
23+79 TO 27+01	644	SOLID DBL @ CL (YELLOW)
27+89 TO 34+74	1370	SOLID DBL @ CL (YELLOW)
PROJECT TOTAL	6,918	

TEMPORARY SIDEWALK RAMP		
STATION	EACH	REMARKS
DIXON AVENUE		
RT 8+12	1	SW INT. @ MARSHA LANE @ SIDEWALK
RT 8+57	1	SE INT. @ MARSHA LANE @ SIDEWALK
RT 23+11	1	SW INT. @ HEINZE DRIVE @ SIDEWALK
RT 23+61	1	SE INT. @ HEINZE DRIVE @ SIDEWALK
LT 27+17	1	NW INT. @ MARTIN ROAD @ SIDEWALK
LT 27+73	1	NE INT. @ MARTIN ROAD @ SIDEWALK
LT 32+26	1	NW INT. @ SUB-DIVISION ENTR. @ SIDEWALK
LT 32+80	1	NE INT. @ SUB-DIVISION ENTR. @ SIDEWALK
PROJECT TOTAL	8	

INLETS, SPECIAL		
STATION	EACH	REMARKS
DIXON AVENUE		
RT 9+34	1	
LT 13+69	1	REUSE EXISTING CASTING AT LT 10+75
RT 13+69	1	
RT 22+93	1	
LT 23+00	1	
RT 27+00	1	
LT 27+54	1	
LT 31+49	1	
RT 31+51	1	
PROJECT TOTAL	9	

INLETS TO BE REMOVED, SPECIAL		
STATION	EACH	REMARKS
DIXON AVENUE		
RT 9+34	1	
LT 13+69	1	
RT 13+69	1	
RT 22+93	1	
LT 23+00	1	
RT 27+00	1	
LT 27+54	1	
LT 31+49	1	
RT 31+51	1	
PROJECT TOTAL	9	

GENERAL NOTES

THE CONTRACTOR SHALL CAREFULLY PRESERVE ALL PROPERTY MARKERS AND SECTION OR SUBSECTION MONUMENTS ENCOUNTERED UNTIL AN OWNER, AUTHORIZED SURVEYOR, OR AGENT HAS WITNESSED OR OTHERWISE REFERENCED THEIR LOCATION. ANY PROPERTY MARKERS AND SECTION OR SUBSECTION MONUMENTS, UNLESS REFERENCED, DAMAGED BY THE CONTRACTOR SHALL BE REPLACED AT THE EXPENSE OF THE CONTRACTOR.

ALL TELEPHONE AND ELECTRIC POLES, GAS PIPES, ETC. IN THE WAY OF THE IMPROVEMENT SHALL BE MOVED BY THE UTILITIES PRIOR TO CONSTRUCTION AND SHALL NOT BE INCLUDED IN THE CONTRACT. THE CONTRACTOR SHALL NOTIFY THE RESPECTIVE UTILITIES TO MAKE THE NECESSARY ADJUSTMENTS PRIOR TO THIS CONSTRUCTION.

THE LOCATION AND ELEVATION OF THE VARIOUS UNDERGROUND UTILITIES AS SHOWN ON THE PLANS ARE NOT TO BE TAKEN AS EXACT. THE CONTRACTOR SHALL USE SPECIAL CARE WHEN CONDUCTING CONSTRUCTION OPERATIONS NEAR THEM TO PREVENT DAMAGE.

AGGREGATE (PRIME COAT) SHALL BE APPLIED AT A RATE OF 2 LB/SQ YD

BITUMINOUS MATERIALS (PRIME COAT) SHALL BE RC-70 OR SS-1 ON BITUMINOUS AND MC-30 OR P.E.P ON AGGREGATE. PRIME COAT SHALL BE APPLIED AT A RATE OF 0.10 GAL/SQ YD. ON BITUMINOUS AND 0.40 GAL/SQ YD. ON AGGREGATE.

CURB AND GUTTER CONTRACTION JOINTS SHALL BE SAW CUT ON 15' CENTERS.

SAW CUTS SHALL BE USED AS DIRECTED BY THE ENGINEER FOR CURB AND SIDEWALK REMOVAL. SAW CUTS SHALL BE INCIDENTAL TO THE PAY ITEM FOR WHICH THE SAW CUTS ARE NECESSARY.

ALL LANDSCAPE RESTORATION SHALL BE INCLUDED IN THE COST FOR PCC SIDEWALK AND COMBINATION CONCRETE CURB AND GUTTER. SHALL INCLUDE SEEDING, FERTILIZER AND EROSION CONTROL BLANKET.

THE FINAL TOP 4" OF SOIL IN ANY AREA DISTURBED BY THE CONTRACTOR, MUST BE ABLE TO SUPPORT VEGETATION.

ALL GRINDING SHALL BE COMPLETED BEFORE PATCHES ARE STARTED.

AGGREGATE BASE COURSE, TYPE B SHALL BE USED TO CAP AGGREGATE SUBGRADE IMPROVEMENT AS DIRECTED BY ENGINEER.

CONCRETE SHALL BE USED AS FILL WHERE PAVEMENT IS REMOVED TO INSTALL INLETS AND CCC&G. FINISHED CONCRETE SURFACE AT THESE LOCATIONS SHALL BE 3" BELOW FINAL SURFACE. COST OF CONCRETE SHALL BE INCIDENTAL TO THE INSTALLATION OF CCC&G AND INLETS.

ALL "AGGREGATE SUBGRADE IMPROVEMENT" (SECTION 303), SHALL BE COMPLETED IN ACCORDANCE WITH ARTICLES 311.04, 311.05, 311.05(A), 311.06 AND 311.07. ALL AGGREGATE SUBGRADE THICKNESSES LESS THAN 12 INCHES SHALL BE CONSTRUCTED OF AGGREGATE OF CA02 GRADATION.

TYPE OF TEMPORARY SIDEWALK RAMP MAY BE CHOSEN BY THE CONTRACTOR BUT SHALL BE APPROVED BY THE ENGINEER.

FILE = S:\PROJECTS\2011\1814\Z11\85572\Drawings\DESIGN\TRAFFIC\cover.ecc.dgn

REVISION	DATE	BY	REMARKS

DRAWN	D.L.B.
CHECKED	J.R.R.
APPROVED	G.F.S.

CITY OF ROCK FALLS
DIXON AVENUE RESURFACING PROJECT
2012

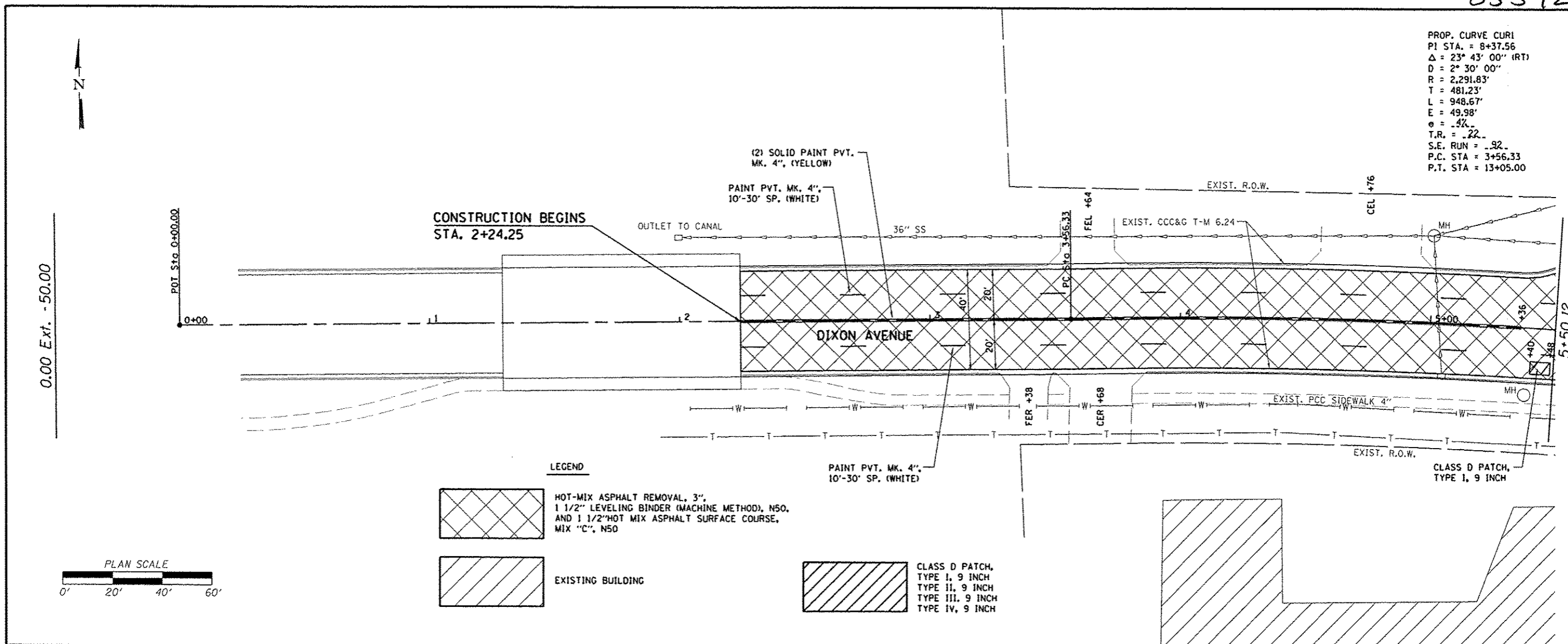


DIXON AVENUE
SCHEDULES

STA. 2+24.25 - 34+74.25

SECTION	COUNTY	TOTAL SHEETS	SHEET NO.
11-00136-00-RS	WHITESIDE	19	6
STA.	STA.		
WHA #:	DATE:		

PROP. CURVE CURI
 PI STA. = 8+37.56
 $\Delta = 23^\circ 43' 00''$ (RT)
 $D = 2^\circ 30' 00''$
 $R = 2,291.83'$
 $T = 481.23'$
 $L = 948.67'$
 $E = 49.98'$
 $\theta = -4\%$
 $T.R. = .22$
 $S.E. RUN = .32$
 $P.C. STA = 3+56.33$
 $P.T. STA = 13+05.00$



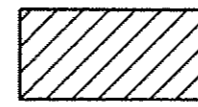
LEGEND



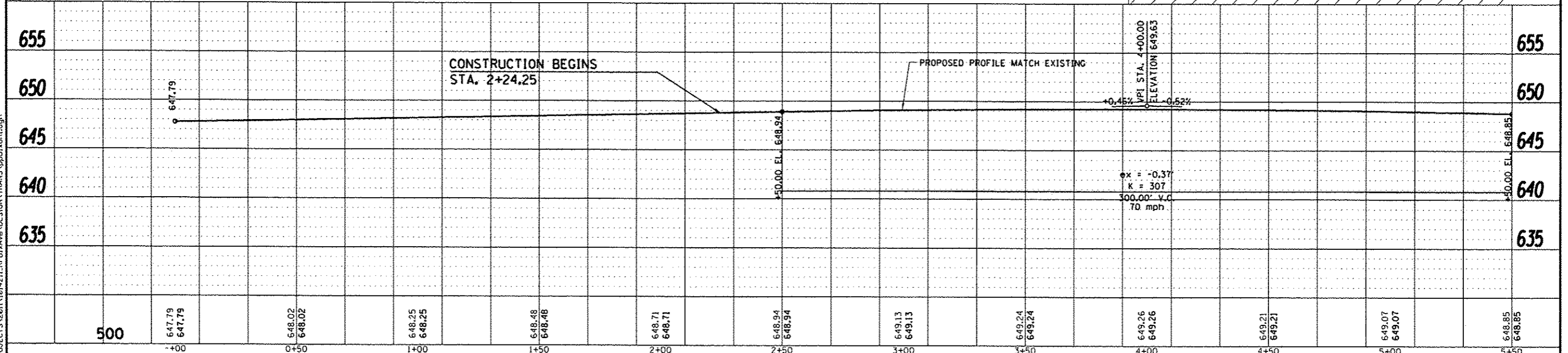
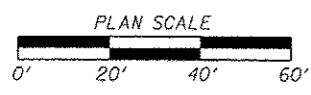
HOT-MIX ASPHALT REMOVAL, 3",
 1 1/2" LEVELING BINDER (MACHINE METHOD), N50,
 AND 1 1/2" HOT MIX ASPHALT SURFACE COURSE,
 MIX "C", N50



EXISTING BUILDING

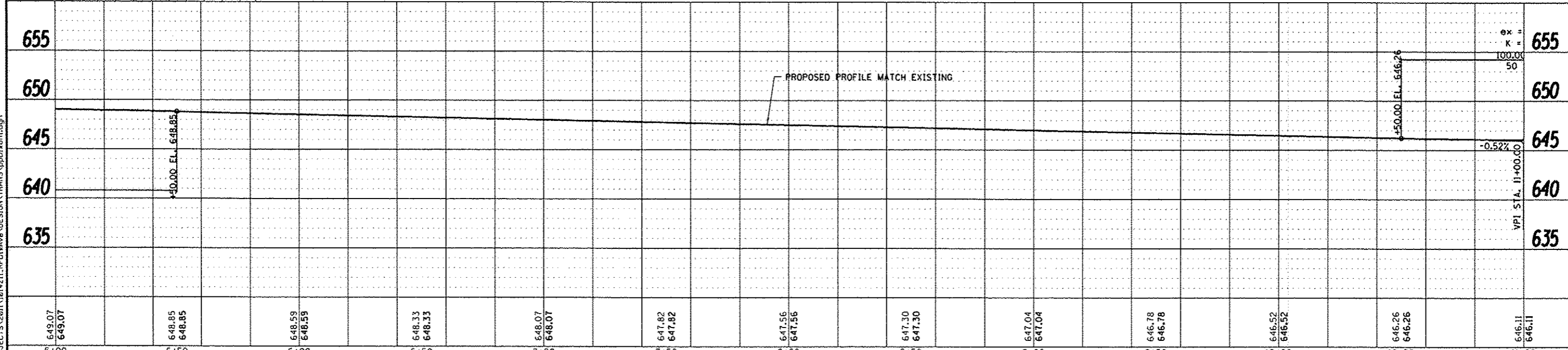
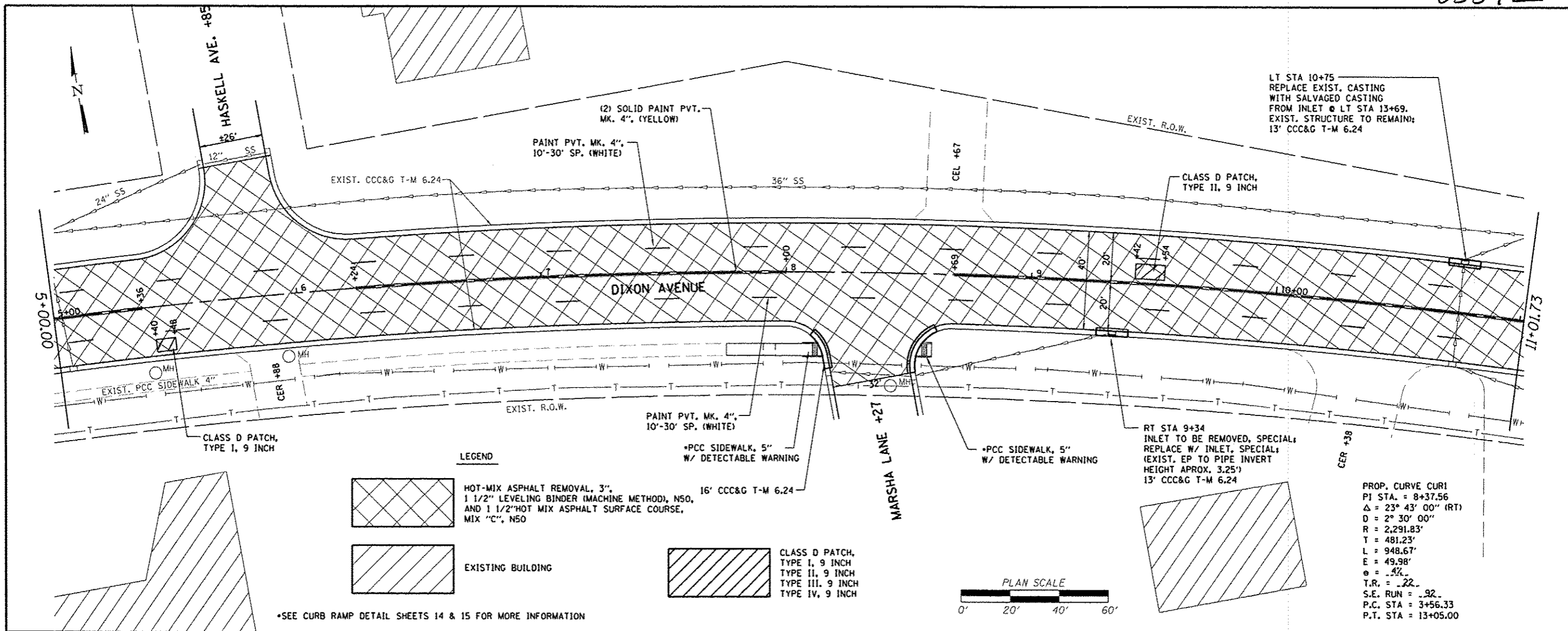


CLASS D PATCH,
 TYPE I, 9 INCH
 TYPE II, 9 INCH
 TYPE III, 9 INCH
 TYPE IV, 9 INCH



REVISION	DATE	BY	REMARKS	DRAWN D.L.B.	CITY OF ROCK FALLS DIXON AVENUE RESURFACING PROJECT 2012	WILLET HOPMANN ASSOCIATES INC. ENGINEERING AND ARCHITECTURE 409 EAST 2ND STREET, ROCK FALLS, IL 61021-0167 T: 815-223-1141 F: 815-223-1144	DIXON AVENUE PLAN AND PROFILE STA. 2+24.25 -- STA. 34+74.25	SECTION 11-00136-00-RS STA. 0+00 -- STA. 5+50.12	COUNTY WHITESIDE	TOTAL SHEETS 19	SHEET NO. 7
				CHECKED J.R.R.				WHA #: 1014211	DATE: DEC. 14, 2012		
				APPROVED G.F.S.							

FILE = S:\PROJECTS\2011\1014211-RFD-Ave\DESIGN\TRANS\ppDixonLdgn



REVISION	DATE	BY	REMARKS	DRAWN	CHECKED	APPROVED	SECTION	COUNTY	TOTAL SHEETS	SHEET NO.
				D.L.B.	J.R.R.	G.F.S.	11-00136-00-RS	WHITESIDE	19	8
							STA. 5+00	STA. 11+01.73		
							WHA #:	DATE:		

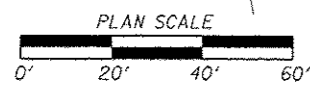
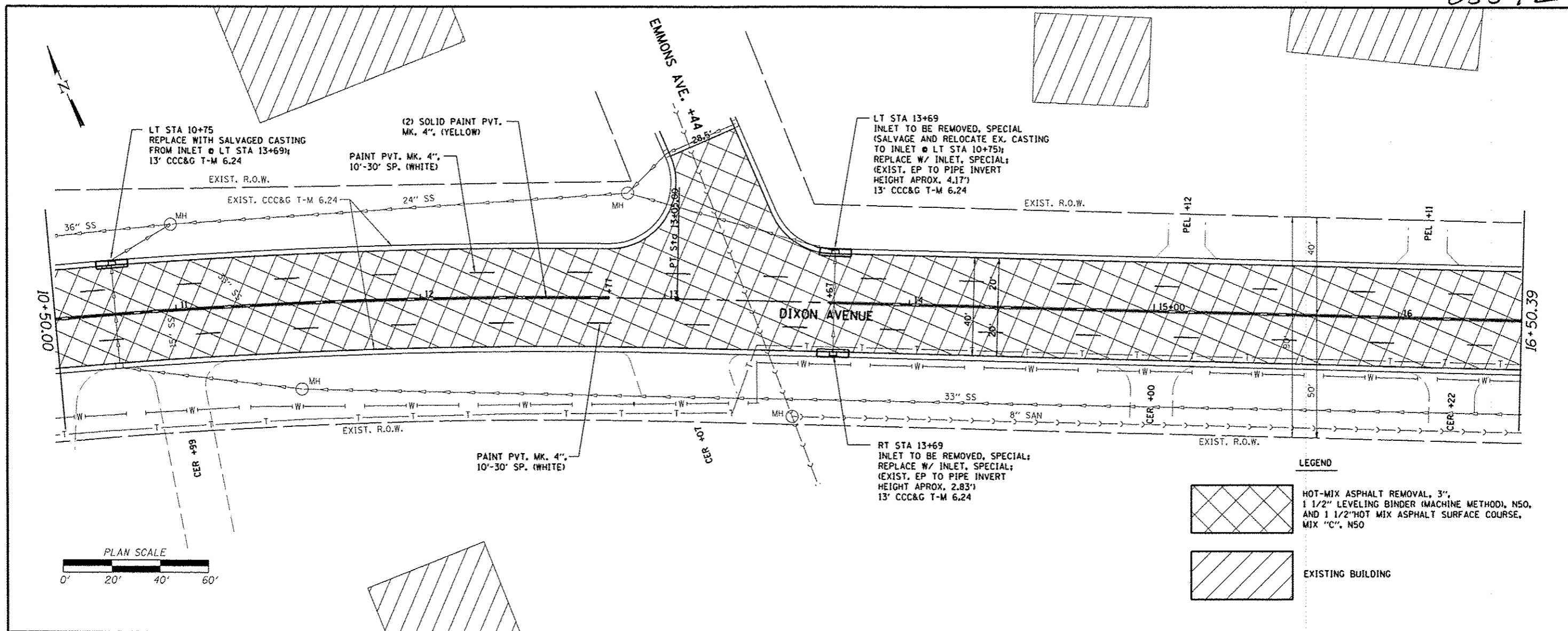
CITY OF ROCK FALLS
DIXON AVENUE RESURFACING PROJECT
 2012



DIXON AVENUE
PLAN AND PROFILE
 STA. 2+24.25 - STA. 34+74.25

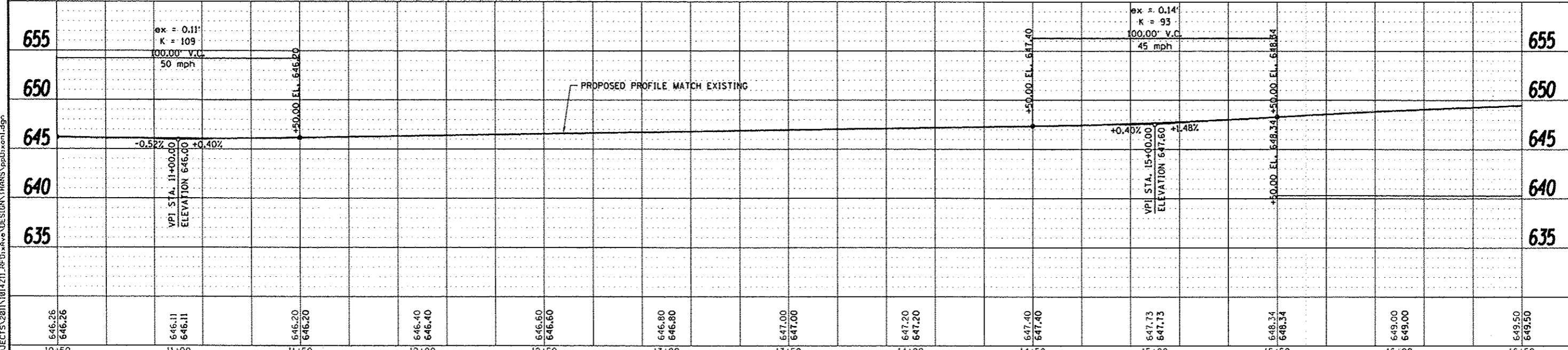
SECTION: 11-00136-00-RS
 COUNTY: WHITESIDE
 TOTAL SHEETS: 19
 SHEET NO.: 8
 DATE: DEC. 14, 2012

FILE = S:\PROJECTS\2011\11\14\211.RFD\Ave\DESIGN\TRANS\pp\11-00136.dgn



LEGEND

- HOT-MIX ASPHALT REMOVAL, 3", 1 1/2" LEVELING BINDER (MACHINE METHOD), N50, AND 1 1/2" HOT MIX ASPHALT SURFACE COURSE, MIX "C", N50
- EXISTING BUILDING



646.26	646.26	646.11	646.11	646.20	646.20	646.40	646.40	646.60	646.60	646.80	646.80	647.00	647.00	647.20	647.20	647.40	647.40	647.73	647.73	648.34	648.34	649.00	649.00	649.50	649.50
10+50		11+00		11+50		12+00		12+50		13+00		13+50		14+00		14+50		15+00		15+50		16+00		16+50	

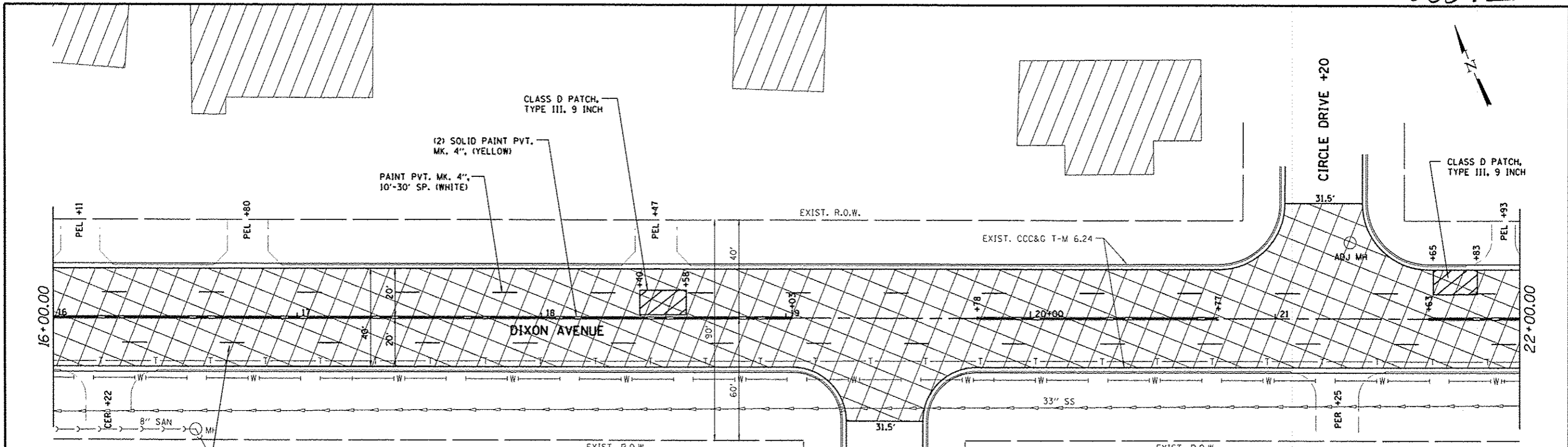
FILE = S:\PROJECTS\2011\1014211.RFD\Ave\DESIGN\TRANS\pp\85572.dgn

CITY OF ROCK FALLS
DIXON AVENUE RESURFACING PROJECT
 2012

WILETT HOFMANN
 ENGINEERS & ARCHITECTS, INC.
 100 EAST 2ND STREET, DIXON, IL 61021-0367
 T: 815-234-3131 FAX: 815-234-4000

DIXON AVENUE
PLAN AND PROFILE
 STA. 2+24.25 - STA. 34+74.25

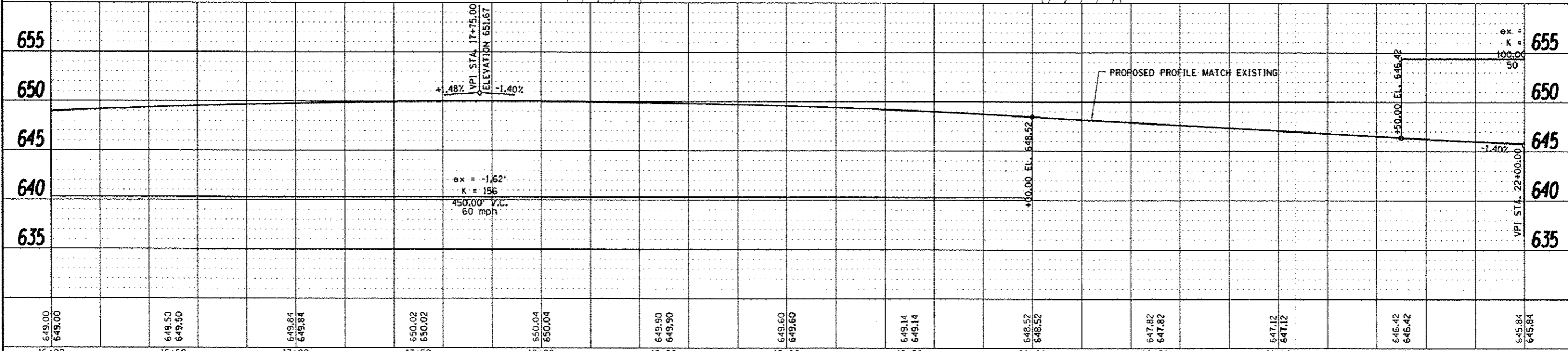
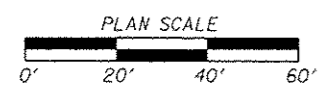
SECTION	COUNTY	TOTAL SHEETS	SHEET NO.
11-00136-00-RS	WHITESIDE	19	9
STA. 10+50	STA. 16+50.39		
WHA #: 1014211	DATE: DEC. 14, 2012		



LEGEND

- HOT-MIX ASPHALT REMOVAL, 3", 1 1/2" LEVELING BINDER (MACHINE METHOD), N50, AND 1 1/2" HOT MIX ASPHALT SURFACE COURSE, MIX "C", N50
- EXISTING BUILDING
- CLASS D PATCH, TYPE I, 9 INCH
- TYPE II, 9 INCH
- TYPE III, 9 INCH
- TYPE IV, 9 INCH

PAINT PVT. MK. 4", 10'-30' SP. (WHITE)



FILE = S:\PROJECTS\2011\181471.RFD\Ave\DESIGN\TRANS\ppb\axon1.dgn

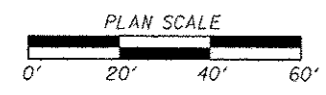
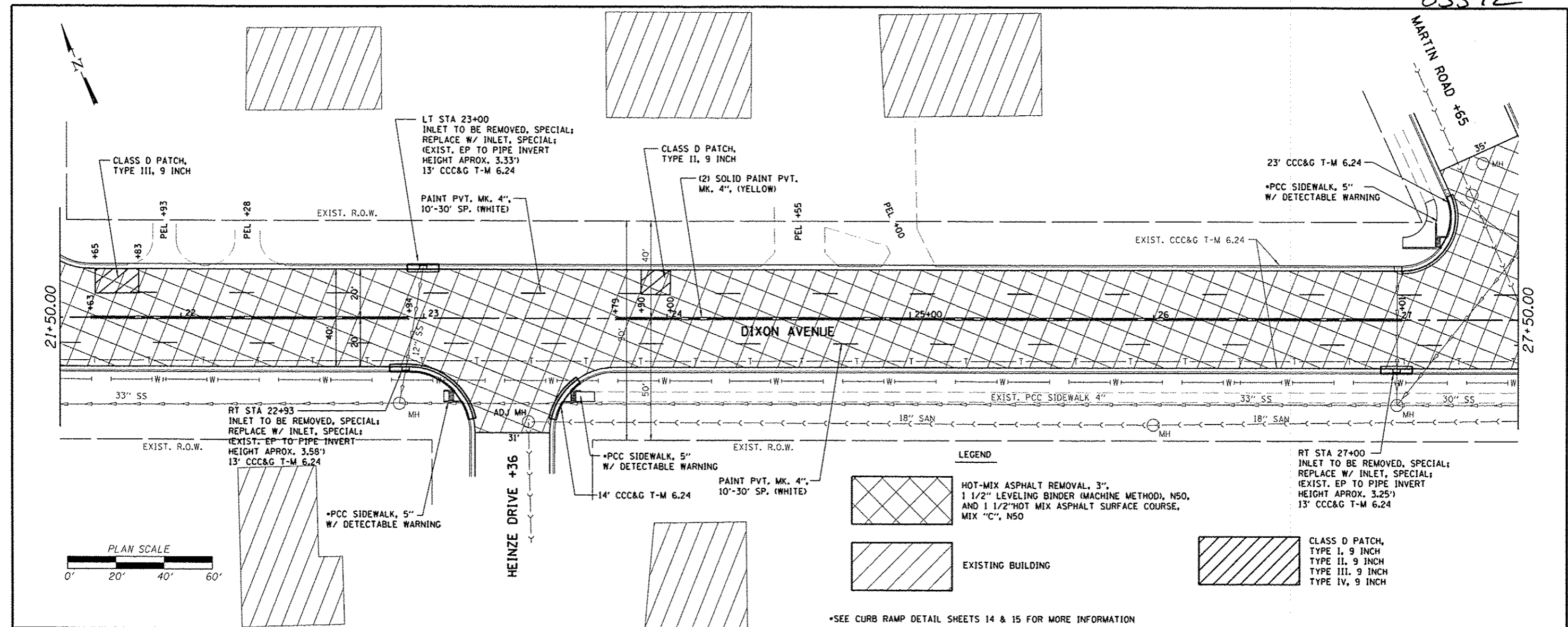
16+00	16+50	17+00	17+50	18+00	18+50	19+00	19+50	20+00	20+50	21+00	21+50	22+00
649.00 649.00	649.50 649.50	649.84 649.84	650.02 650.02	650.04 650.04	649.90 649.90	649.60 649.60	649.14 649.14	648.52 648.52	647.82 647.82	647.12 647.12	646.42 646.42	645.84 645.84

REVISION	DATE	BY	REMARKS

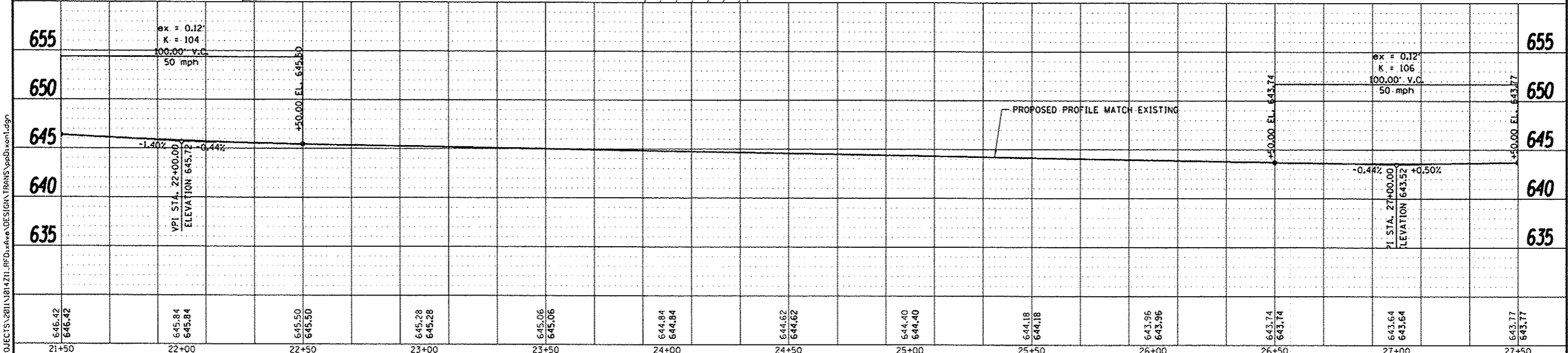
CITY OF ROCK FALLS
DIXON AVENUE RESURFACING PROJECT
 2012

DIXON AVENUE
PLAN AND PROFILE
 STA. 2+24.25 - STA. 34+74.25

SECTION 11-00135-00-R5	COUNTY WHITESIDE	TOTAL SHEETS 19	SHEET NO. 10
STA. 16+00 - STA. 22+00		DATE: DEC. 14, 2012	
WHA #: 1014711		DATE: DEC. 14, 2012	



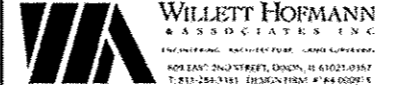
•SEE CURB RAMP DETAIL SHEETS 14 & 15 FOR MORE INFORMATION



REVISION	DATE	BY	REMARKS	DRAWN	CHECKED	APPROVED	STATION	ELEVATION
							21+50	646.42
							22+00	645.84
							22+50	645.50
							23+00	645.28
							23+50	645.06
							24+00	644.84
							24+50	644.62
							25+00	644.40
							25+50	644.18
							26+00	643.96
							26+50	643.74
							27+00	643.52
							27+50	643.30

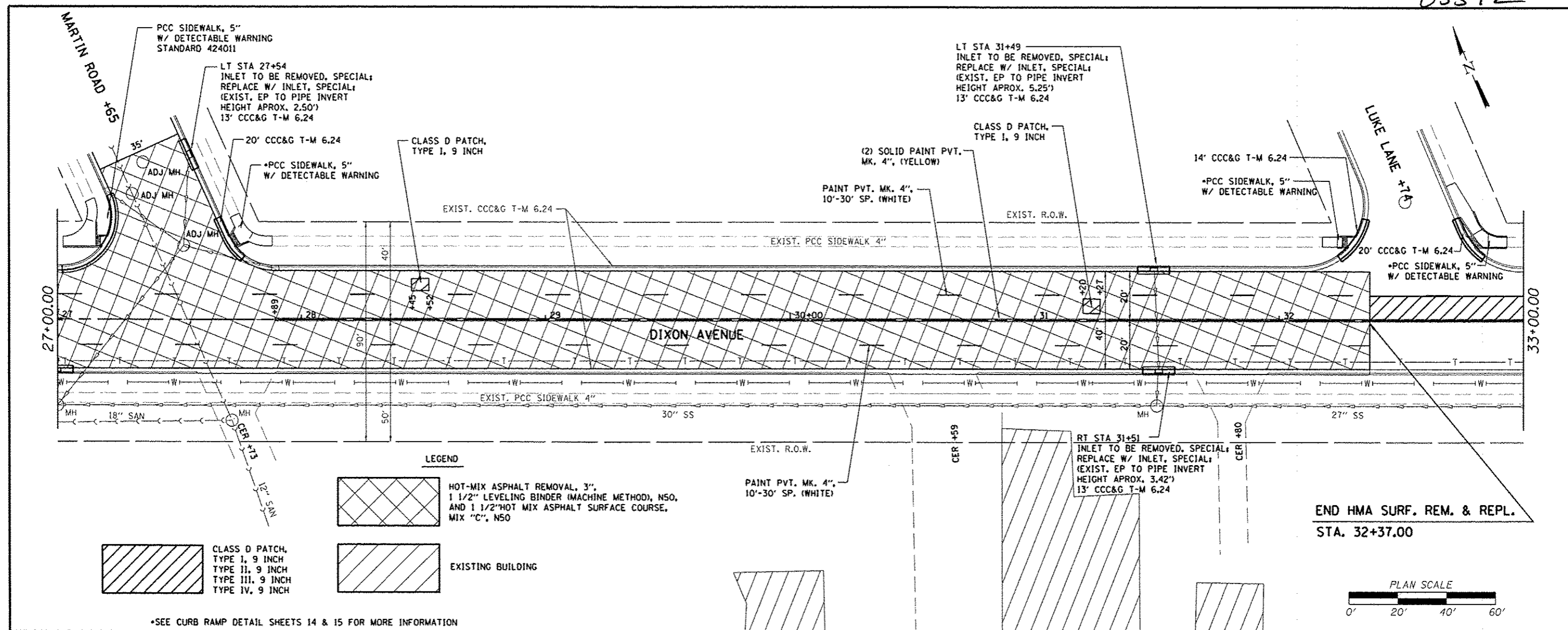
FILE = S:\PROJECTS\2011\1814\11.RFD\ave\DESIGN\TRANS\pbdixon1.dgn

CITY OF ROCK FALLS
DIXON AVENUE RESURFACING PROJECT
2012

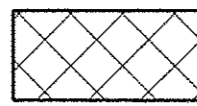
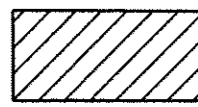
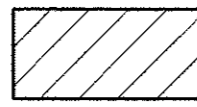


DIXON AVENUE
PLAN AND PROFILE
STA. 2+24.25 - STA. 34+74.25

SECTION	COUNTY	TOTAL SHEETS	SHEET NO.
11-00136-00-RS	WHITESIDE	19	11
STA. 21+50	STA. 27+50		
WHA #: 1014211	DATE: DEC. 14, 2012		

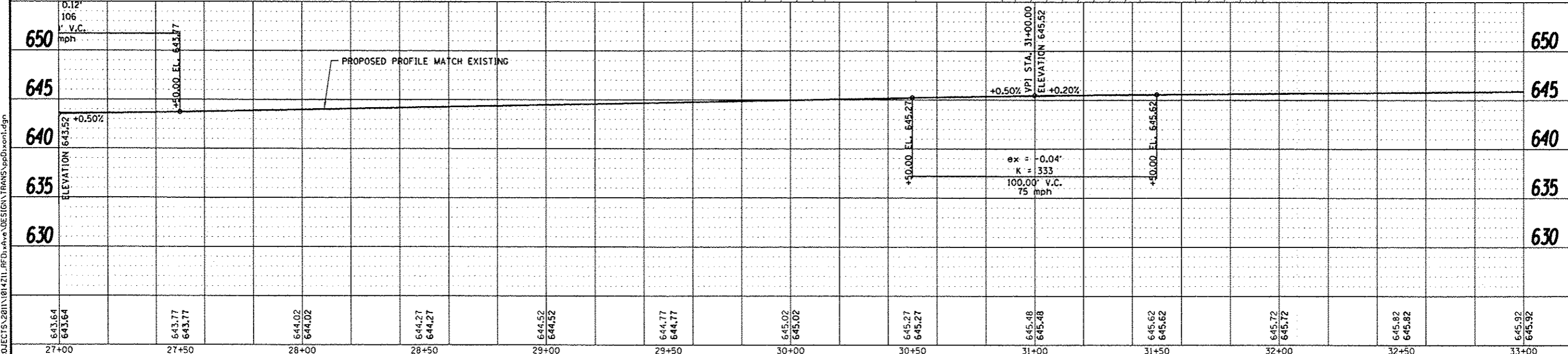
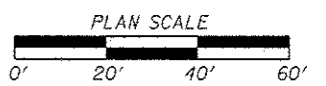


LEGEND

-  HOT-MIX ASPHALT REMOVAL, 3", 1 1/2" LEVELING BINDER (MACHINE METHOD), NSO, AND 1 1/2" HOT MIX ASPHALT SURFACE COURSE, MIX "C", NSO
-  CLASS D PATCH, TYPE I, 9 INCH
TYPE II, 9 INCH
TYPE III, 9 INCH
TYPE IV, 9 INCH
-  EXISTING BUILDING

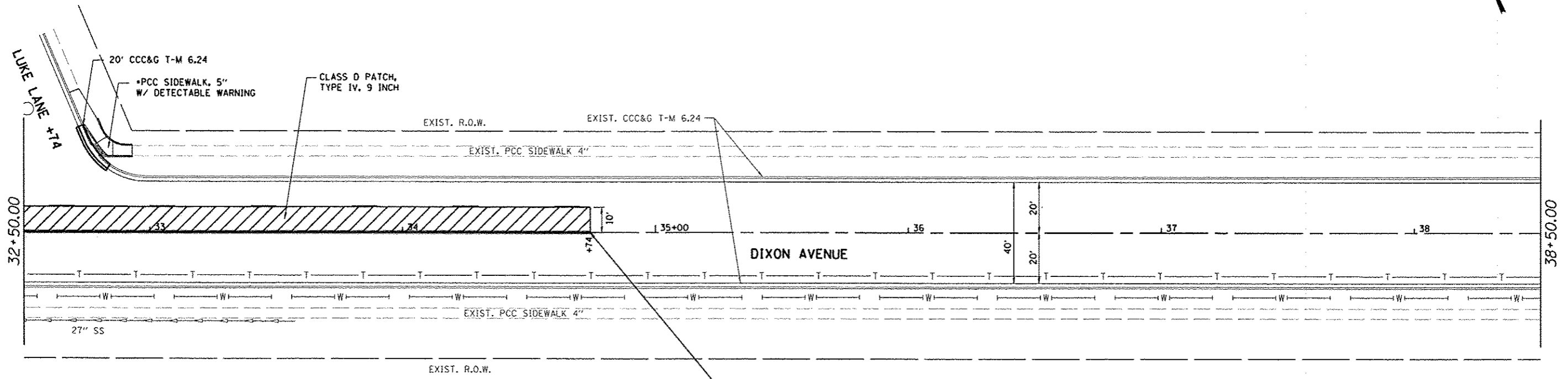
*SEE CURB RAMP DETAIL SHEETS 14 & 15 FOR MORE INFORMATION

**END HMA SURF. REM. & REPL.
STA. 32+37.00**



REVISION	DATE	BY	REMARKS	DRAWN	CHECKED	APPROVED	CITY OF ROCK FALLS DIXON AVENUE RESURFACING PROJECT 2012	WILLET HORMANN ASSOCIATES INC. ENGINEERING ARCHITECTURE AND SURVEYING 809 EAST 2ND STREET, DIXON, IL 61021-0367 T: 213-284-1361, D: 213-284-1362, F: 213-284-1363	DIXON AVENUE PLAN AND PROFILE STA. 2+24.25 - STA. 34+74.25	SECTION 11-00136-00-RS STA. 27+00 - STA. 33+00	COUNTY WHITESIDE	TOTAL SHEETS 19	SHEET NO. 12
										WHA #: 1014211	DATE: DEC. 14, 2012		

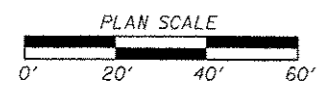
FILE = S:\PROJECTS\2011\1014211\RFD\Ave\DESIGN\TRANS\pp\dixon1.dgn



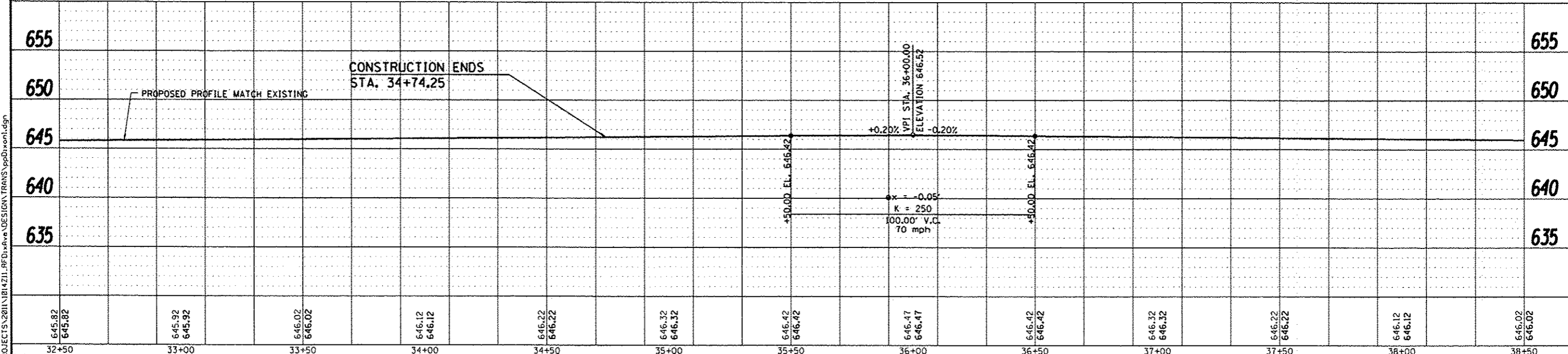
CONSTRUCTION ENDS STA. 34+74.25

LEGEND

CLASS D PATCH, TYPE I, 9 INCH
TYPE II, 9 INCH
TYPE III, 9 INCH
TYPE IV, 9 INCH



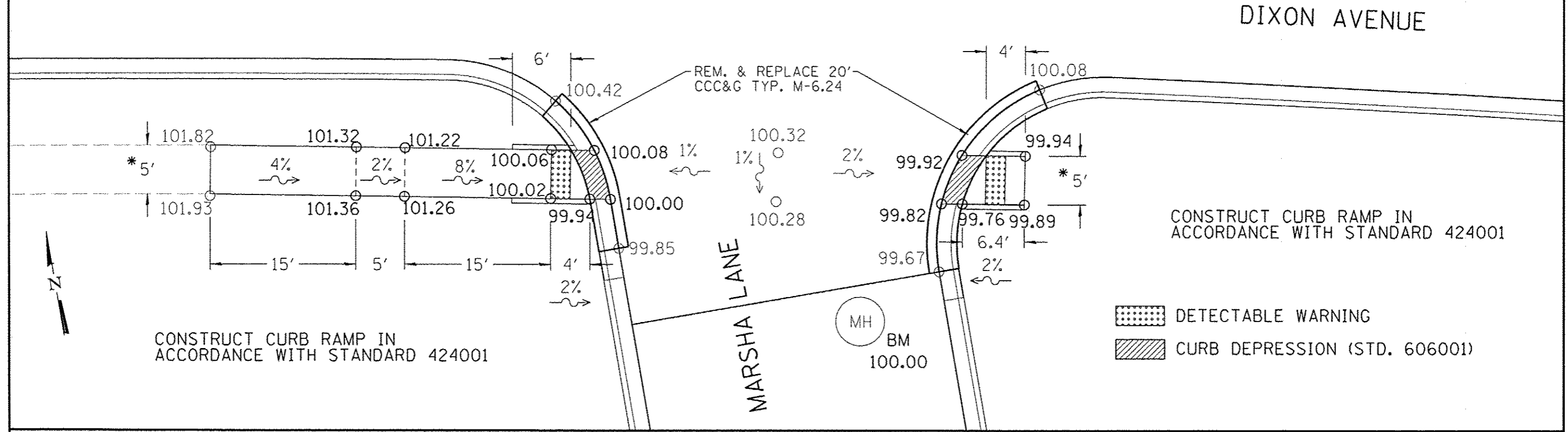
*SEE CURB RAMP DETAIL SHEETS 14 & 15 FOR MORE INFORMATION



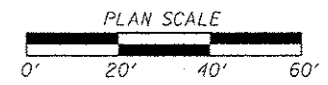
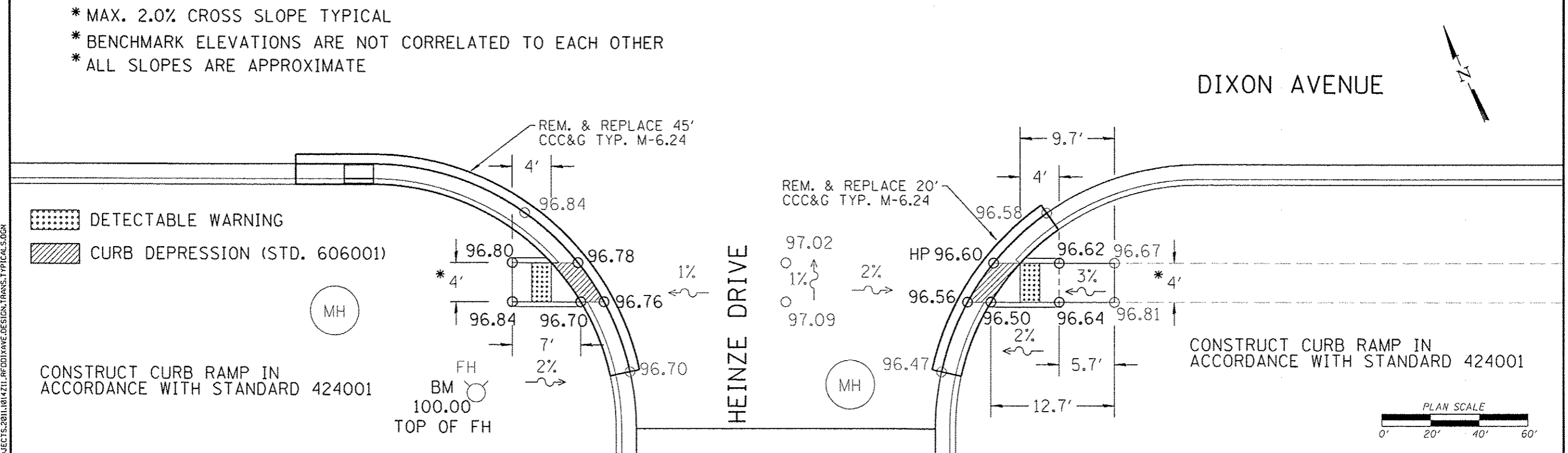
FILE = S:\PROJECTS\2011\14711.RFD\Drawings\DESIGN\TRANS\ppdixon1.dgn

REVISION	DATE	BY	REMARKS	DRAWN D.L.B.	CITY OF ROCK FALLS DIXON AVENUE RESURFACING PROJECT 2012	<p>WILLET HOFMANN ASSOCIATES INC ENGINEERING AND SURVEYING 109 EAST 2ND STREET, ROCK FALLS, IL 61021-0387 TEL: 364-3341 DESIGN: 364-6221/3</p>	DIXON AVENUE PLAN AND PROFILE STA. 2+24.25 - STA. 34+74.25		SECTION 11-00136-00-RS STA. 33+00 - STA. 38+50	COUNTY WHITESIDE	TOTAL SHEETS 19	SHEET NO. 13
				CHECKED J.R.R.					WHA #: 1014211	DATE: DEC. 14, 2012		
				APPROVED G.F.S.								

* MAX. 2.0% CROSS SLOPE TYPICAL
 * BENCHMARK ELEVATIONS ARE NOT CORRELATED TO EACH OTHER
 * ALL SLOPES ARE APPROXIMATE





* MAX. 2.0% CROSS SLOPE TYPICAL
 * BENCHMARK ELEVATIONS ARE NOT CORRELATED TO EACH OTHER
 * ALL SLOPES ARE APPROXIMATE



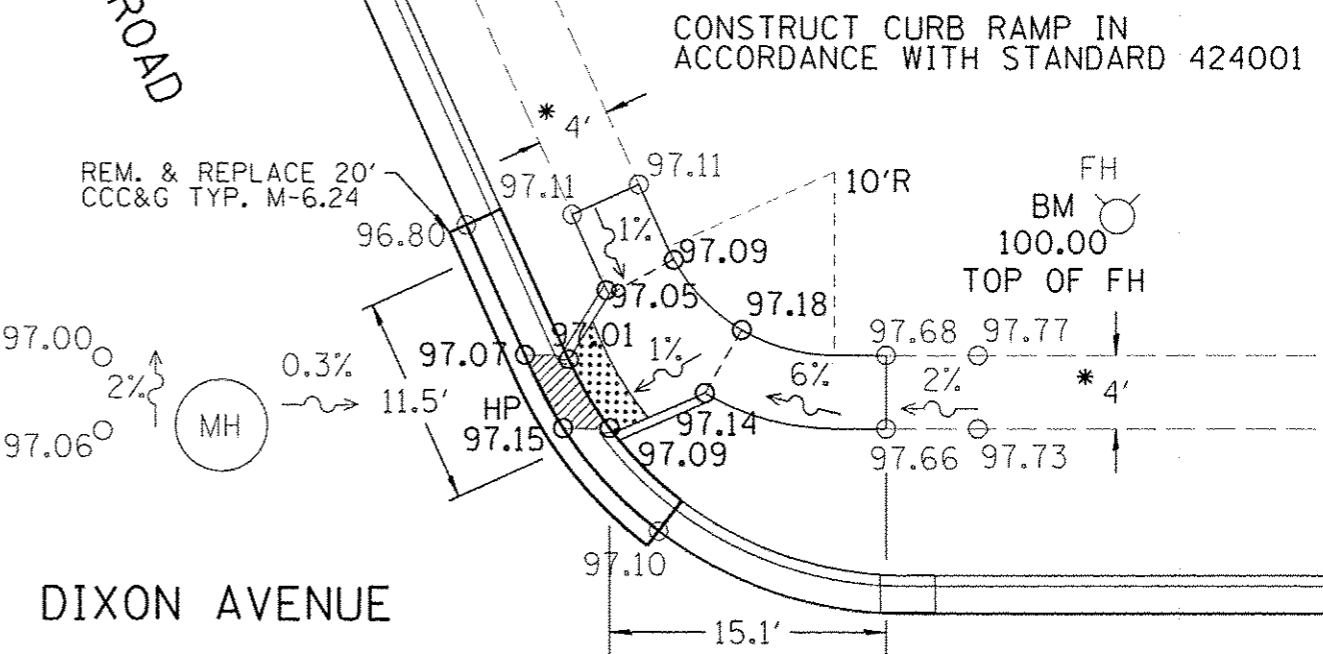
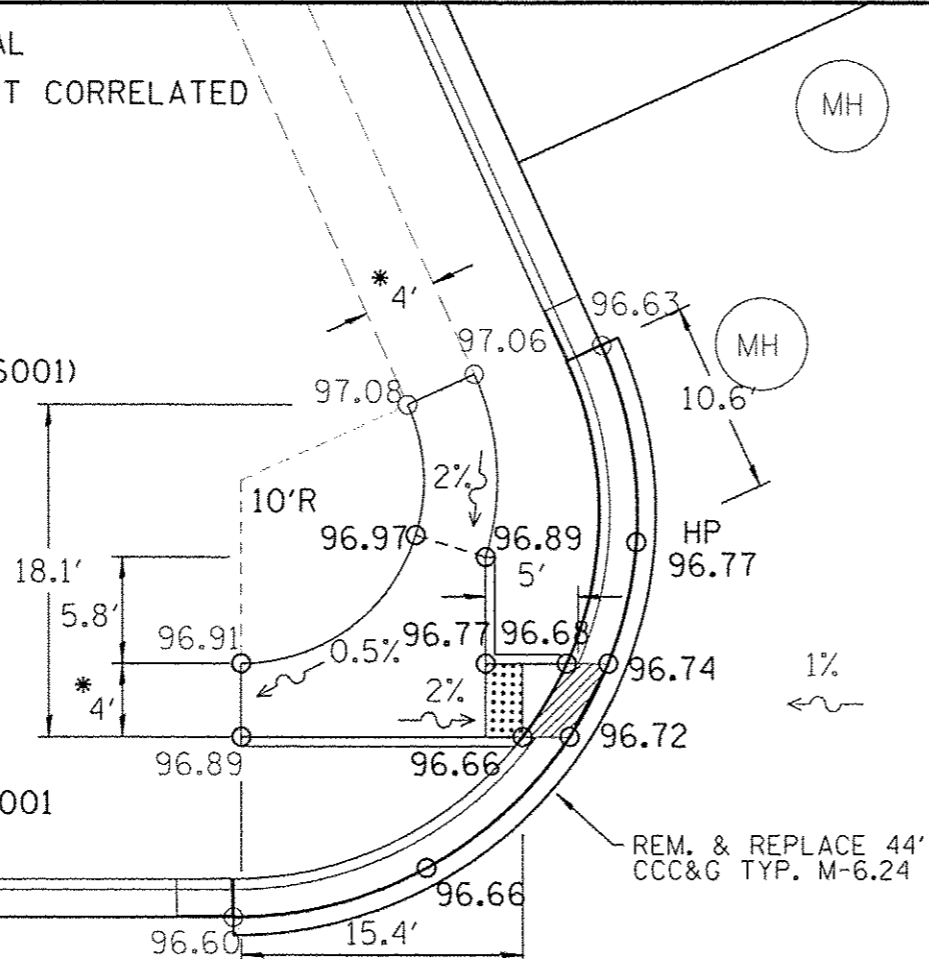
FILE = S:\PROJECTS-2011\1014211-RFD\DIX AVENUE DESIGN\TRANS.TYPICAL.S.DGN

REVISION	DATE	BY	REMARKS	DRAWN L.G.M.	CITY OF ROCK FALLS DIXON AVENUE RESURFACING PROJECT 2012	WILLET HOFMANN & ASSOCIATES INC ENGINEERING ARCHITECTURE LANDSCAPE SUPPLY 400 EAST 200 STREET, DIXON, IL 61021-0567 P. 815.254.3141 DESIGN FAX# 815.254.0025	DIXON AVENUE SIDEWALK REAMP DETAILS		SECTION 11-00149-00-FP	COUNTY WHITESIDE	TOTAL SHEETS	SHEET NO.
				CHECKED J.R.R.			STA.	STA.	19	14		
				APPROVED G.F.S.			STA. 2+24.25 - 32+37.00	DATE: DEC. 14, 2012				
							WHA #: 1014211					

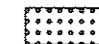

* MAX. 2.0% CROSS SLOPE TYPICAL
 * BENCHMARK ELEVATIONS ARE NOT CORRELATED TO EACH OTHER
 * ALL SLOPES ARE APPROXIMATE

 DETECTABLE WARNING
 CURB DEPRESSION (STD. 606001)

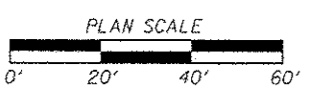
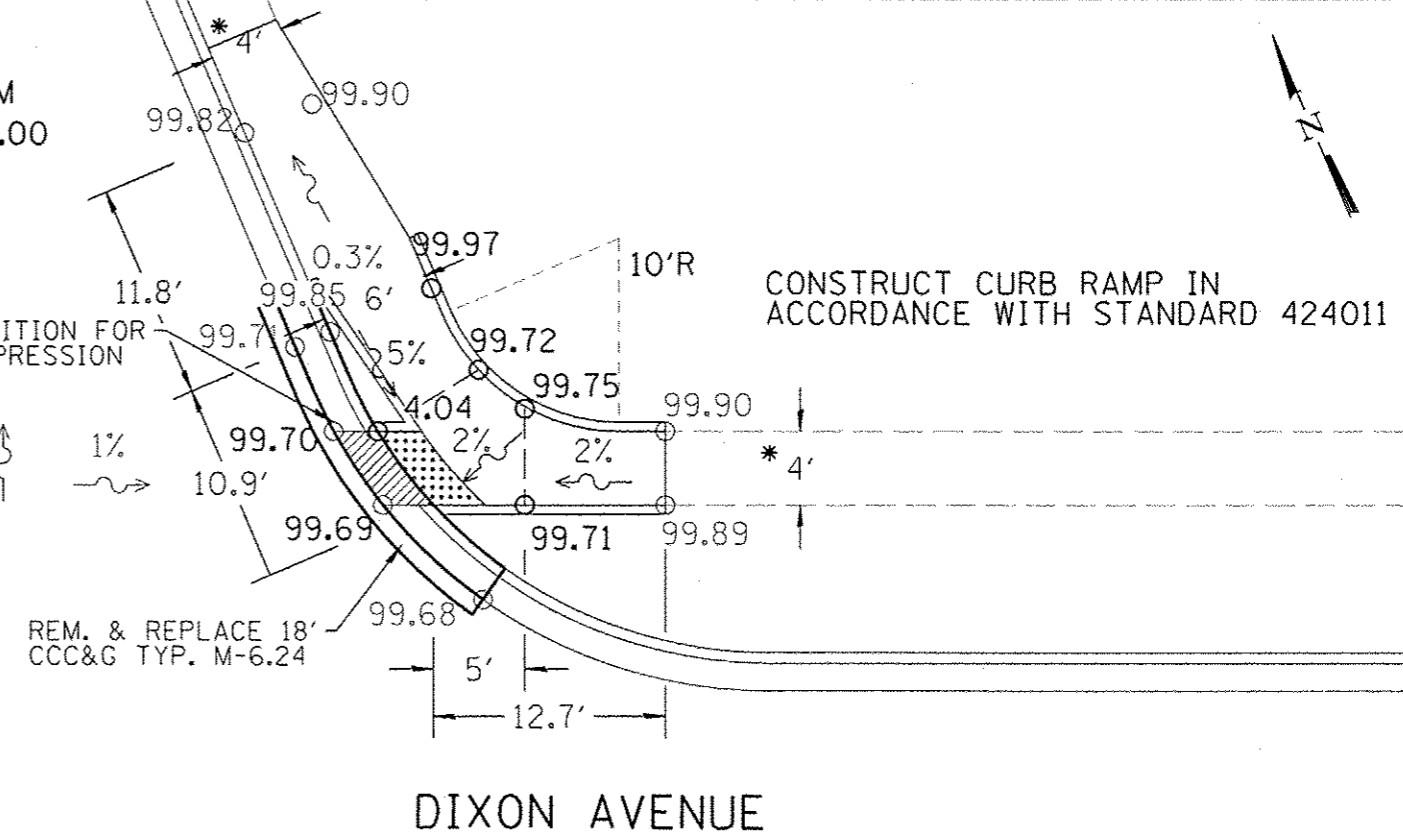
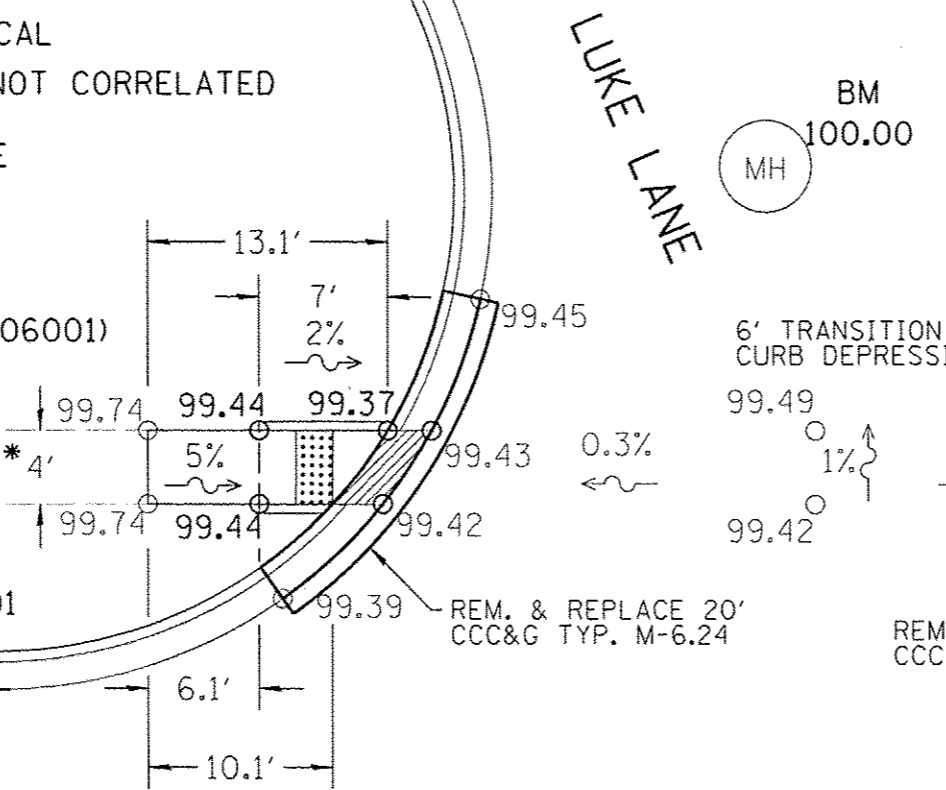
CONSTRUCT CURB RAMP IN ACCORDANCE WITH STANDARD 424001



* MAX. 2.0% CROSS SLOPE TYPICAL
 * BENCHMARK ELEVATIONS ARE NOT CORRELATED TO EACH OTHER
 * ALL SLOPES ARE APPROXIMATE

 DETECTABLE WARNING
 CURB DEPRESSION (STD. 606001)

CONSTRUCT CURB RAMP IN ACCORDANCE WITH STANDARD 424001



FILE = S:\PROJECTS\2011\1014211.RFD\XAVES.DESIGN\TRANS.TYPICAL.S.DGN

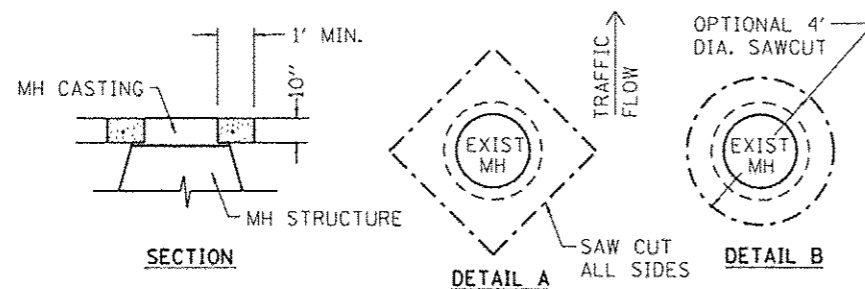
REVISION	DATE	BY	REMARKS

CITY OF ROCK FALLS
 DIXON AVENUE RESURFACING PROJECT
 2012



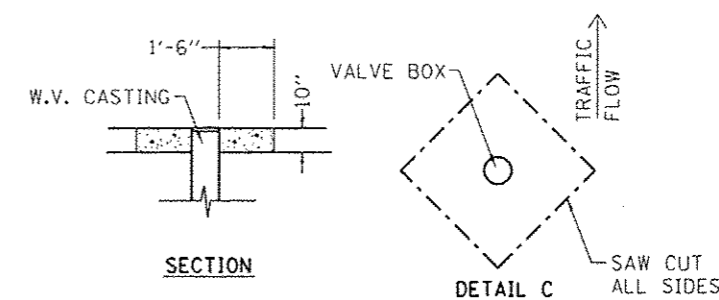
DIXON AVENUE
 SIDEWALK RAMP DETAILS
 STA. 2+24.25 - 32+37.00

SECTION	COUNTY	TOTAL SHEETS	SHEET NO.
11-00149-00-FP	WHITESIDE	19	15
STA.	STA.		
WHA #: 1014211	DATE: DEC. 14, 2012		



MANHOLE ADJUSTMENT DETAIL

1. ADJUST MANHOLE AFTER PAVING OPERATION IS COMPLETE.
2. THE CONTRACTOR SHALL MARK THE LOCATION OF EVERY MANHOLE PRIOR TO PAVING BY A METHOD APPROVED BY THE ENGINEER. THIS WORK SHALL BE INCIDENTAL TO THE MANHOLE ADJUSTMENT.
3. SAW CUT SQUARE OPENING AS SHOWN IN DETAIL A OR A CIRCULAR OPENING AS SHOWN IN DETAIL B WITH THE MANHOLE CENTERED IN THE MIDDLE OF THE OPENING.
4. REMOVE ALL PAVEMENT MATERIAL AND ADJUST THE MANHOLE TO WITHIN $\frac{5}{64}$ " BELOW THE TOP OF THE NEW PAVEMENT. IN NO CASE SHALL THE MANHOLE BE ABOVE THE PAVEMENT SURFACE. THE REMOVAL SHALL INCLUDE ALL TYPES OF MATERIALS, AND NO ADDITIONAL COMPENSATION WILL BE GIVEN DEPENDING ON THE TYPE OF MATERIAL. NO ADJUSTMENTS SHALL BE MADE WITH WOOD SCHIMS.
5. FILL VOID WITH MINIMUM OF 10" OF CONCRETE, THIS WORK SHALL MEET THE REQUIREMENTS OF ARTICLE 442.02 NOTE #1 AND ARTICLE 701.17(e)(2)&(3). TROWEL OFF CONCRETE FLUSH WITH NEW PAVEMENT AND BROOM FINISH. MANHOLE FRAME SHALL BE RECESSED FROM CONCRETE NO MORE THAN $\frac{3}{8}$ ".
6. IF THE ENGINEER DETERMINES A MANHOLE DOES NOT NEED ADJUSTED, THE CONTRACTOR SHALL PAVE AROUND THE MANHOLE AND NO ADJUSTMENT WILL BE PAID.
7. THE CONTRACTOR IS RESPONSIBLE FOR PROTECTING ALL MANHOLES BEING PAVED OVER OR AROUND. THE CONTRACTOR SHALL BE RESPONSIBLE FOR ALL DAMAGES OCCURRED DURING CONSTRUCTION.
8. CONTRACTOR SHALL CLEAN OUT ANY CONSTRUCTION DEBRIS INSIDE THE MANHOLE DURING THE ADJUSTMENT OF THE CASTING. THIS WORK SHALL BE INCIDENTAL TO THE MANHOLE ADJUSTMENT.



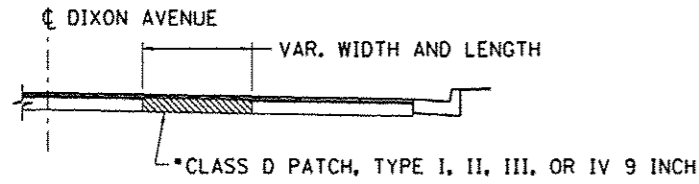
VALVE BOX ADJUSTMENT DETAIL

1. ADJUST WATER VALVE AFTER PAVING OPERATION IS COMPLETE.
2. THE CONTRACTOR SHALL MARK THE LOCATION OF EVERY WATER VALVE PRIOR TO PAVING BY A METHOD APPROVED BY THE ENGINEER. THIS WORK SHALL BE INCIDENTAL TO THE WATER VALVE ADJUSTMENT.
3. SAW CUT SQUARE OPENING AS SHOWN IN DETAIL A OR A CIRCULAR OPENING AS SHOWN IN DETAIL B WITH THE WATER VALVE CENTERED IN THE MIDDLE OF THE OPENING.
4. REMOVE ALL PAVEMENT MATERIAL AND ADJUST THE WATER VALVE TO WITHIN $\frac{5}{64}$ " BELOW THE TOP OF THE NEW PAVEMENT. IN NO CASE SHALL THE WATER VALVE BE ABOVE THE PAVEMENT SURFACE. THE REMOVAL SHALL INCLUDE ALL TYPES OF MATERIALS, AND NO ADDITIONAL COMPENSATION WILL BE GIVEN DEPENDING ON THE TYPE OF MATERIAL.
5. FILL VOID WITH MINIMUM OF 10" OF CONCRETE, THIS WORK SHALL MEET THE REQUIREMENTS OF ARTICLE 442.02 NOTE #1 AND ARTICLE 701.17(e)(2)&(3). TROWEL OFF CONCRETE FLUSH WITH NEW PAVEMENT AND BROOM FINISH. WATER VALVE BOX FRAME SHALL BE RECESSED FROM CONCRETE NO MORE THAN $\frac{3}{8}$ ".
6. IF THE ENGINEER DETERMINES A WATER VALVE DOES NOT NEED ADJUSTED, THE CONTRACTOR SHALL PAVE AROUND THE WATER VALVE AND NO ADJUSTMENT WILL BE PAID.
7. THE CONTRACTOR IS RESPONSIBLE FOR PROTECTING ALL WATER VALVES BEING PAVED OVER OR AROUND. THE CONTRACTOR SHALL BE RESPONSIBLE FOR ALL DAMAGES OCCURRED DURING CONSTRUCTION.
8. CONTRACTOR SHALL CLEAN OUT ANY CONSTRUCTION DEBRIS INSIDE THE WATER VALVE DURING THE ADJUSTMENT OF THE CASTING. THIS WORK SHALL BE INCIDENTAL TO THE WATER VALVE ADJUSTMENT.

FILE = S:\PROJECTS\2011\04211_06\DDIXAVE.DESIGN\TRANS.TYPICAL.S.DGN

REVISION	DATE	BY	REMARKS	DRAWN D.L.B.	CITY OF ROCK FALLS DIXON AVENUE RESURFACING PROJECT 2012	WILLET HOFMANN ASSOCIATES INC ENGINEERING ARCHITECTURE LANDSCAPE 809 EAST 2ND STREET, DUNCAN, IL 61021-0167 P: 815-264-7381 DESIGN: 3183 FAX: 815-264-7382	DIXON AVENUE MANHOLE & WATER VALVE ADJUSTMENT DETAILS		SECTION	COUNTY	TOTAL	SHEET		
									11-00149-00-FP	WHITESIDE	SHEETS	NO.		
									STA.	STA.				
									WHA #:	DATE:			19	16

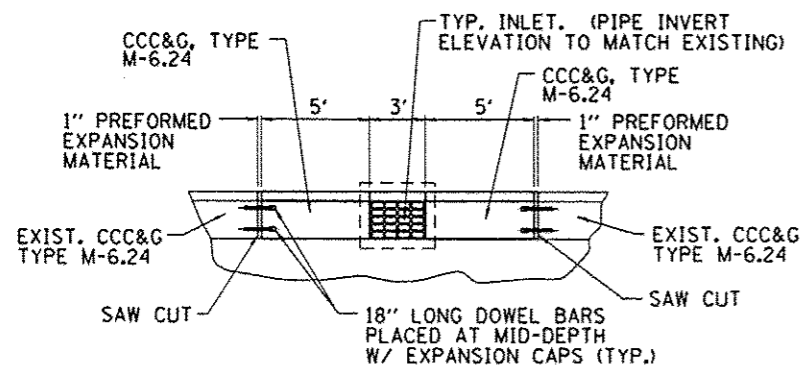
DIXON AVENUE - PATCHING DETAIL



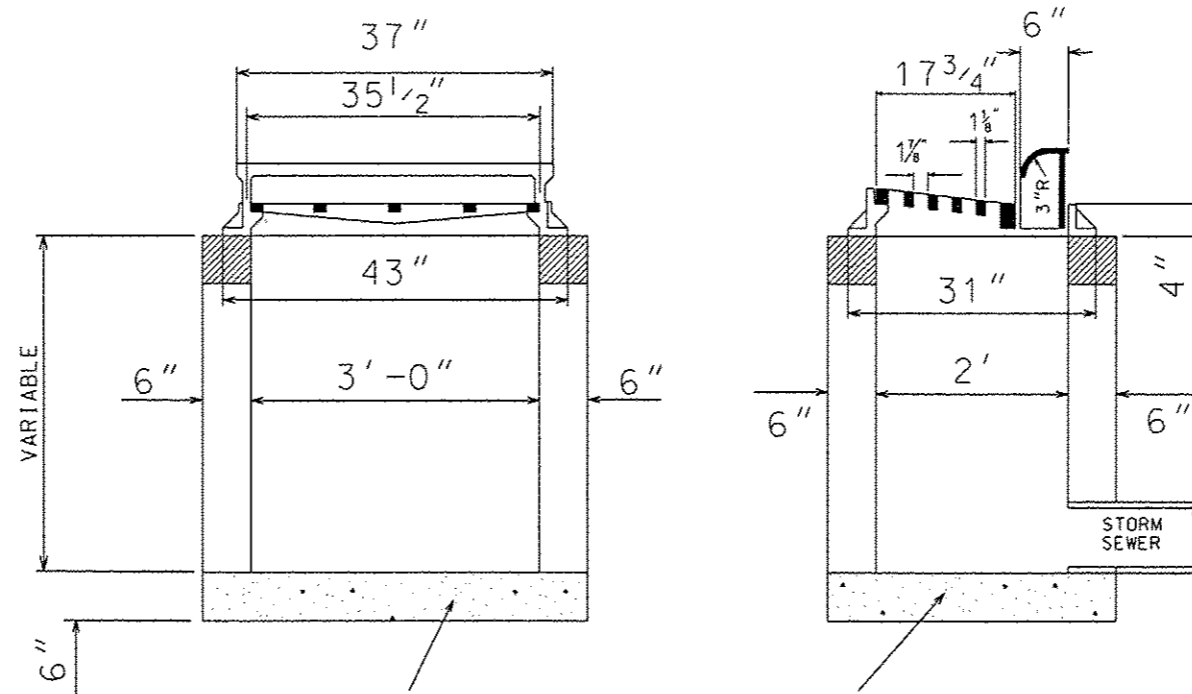
***NOTE:**

SEE SCHEDULES ON SHEETS 5 & 6 FOR LOCATIONS
 ADDITIONAL PATCHING MAY BE NECESSARY BASED ON ROADWAY CONDITION AFTER MILLING. QUANTITY AND LOCATIONS IF REQUIRED TO BE DETERMINED BY ENGINEER.

DIXON AVENUE - INLET DETAIL



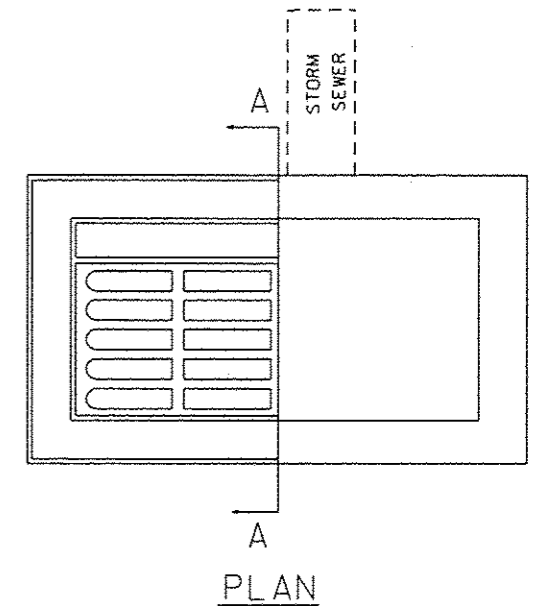
INLETS, SPECIAL DETAIL



6" CLASS SI CONCRETE OR
 4" PRECAST REINF. CONC.
 SLAB ON 3" SAND CUSHION

LONGITUDINAL SECTION

SECTION A-A



PLAN

NOTES:

THE INLET SHALL BE CAST IN PLACE OR PRECAST, EXCEPT AS NOTED HERE, INLET SPECIAL SHALL BE CONSTRUCTED IN ACCORDANCE WITH SECTION 602 OF THE STANDARD SPECIFICATIONS. THE CONTRACT UNIT PRICE EACH FOR INLETS, SPECIAL SHALL INCLUDE THE COST OF FURNISHING AND INSTALLING THE INLET WITH SAND CUSHION IF REQUIRED. CLASS SI CONCRETE OR PRECAST CONCRETE SHALL BE USED THROUGHOUT. THE SIDEWALLS MAY BE BUILT AS PRECAST SEGMENTAL SECTIONS. THE HEIGHT OF THE BOX MAY BE CONSTRUCTED 6" SHORT TO ALLOW FOR FIELD ADJUSTMENTS. THE WALL ADJUSTMENTS SHALL BE MADE WITH CONCRETE BUILDING BRICK OR CLASS SI CONCRETE.

FRAME AND GRATE TO WEIGHT APPROXIMATELY 525 LBS.

FILE = S:\PROJECTS-2011\1014211_RF001\XAVE.DESIGN\TRANS.TYPICALS.DGN

REVISION	DATE	BY	REMARKS

DRAWN	D.J.B.
CHECKED	J.R.R.
APPROVED	G.F.S.

CITY OF ROCK FALLS
 DIXON AVENUE RESURFACING PROJECT
 2012

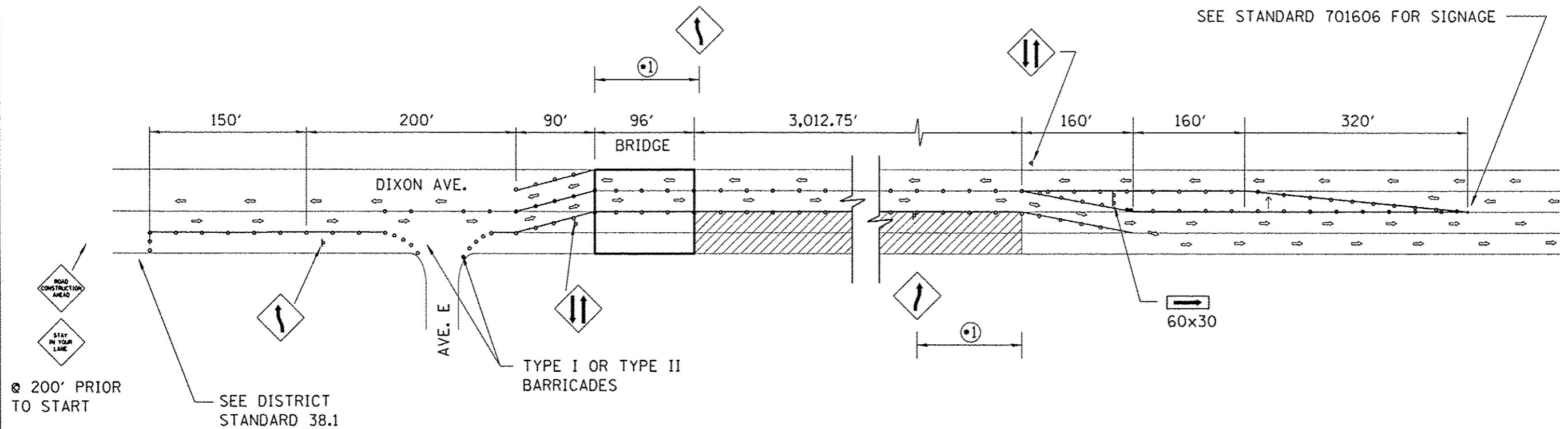


DIXON AVENUE
 PATCHING & INLETS, SPECIAL DETAIL

SECTION	COUNTY	TOTAL SHEETS	SHEET NO.
11-00149-00-FP	WHITESIDE	19	17
STA.	STA.		
WHA #: 1014211	DATE: DEC. 14, 2012		

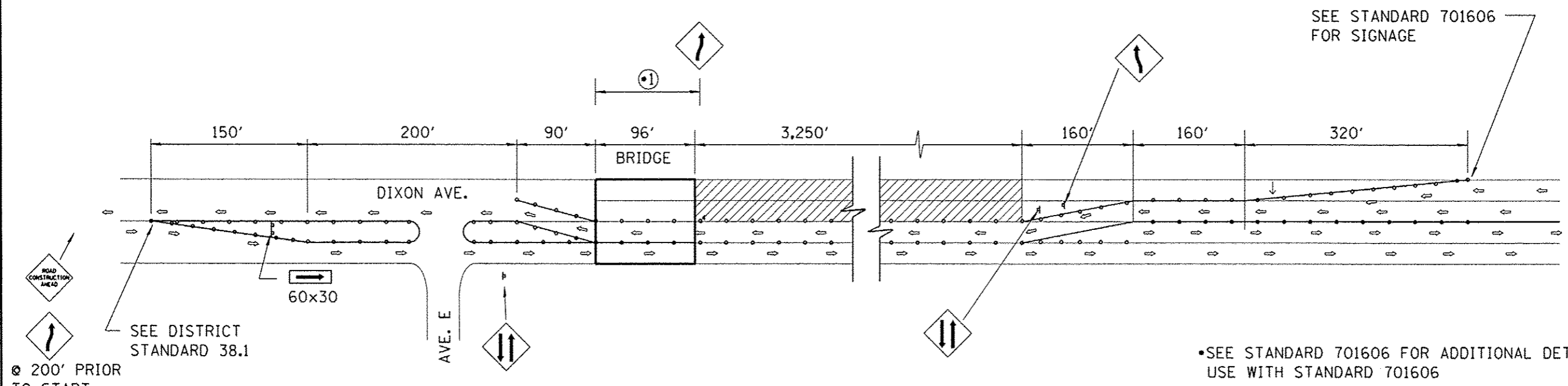
EASTBOUND LANES UNDER CONSTRUCTION

SEE STANDARD 701606 FOR SIGNAGE



WESTBOUND LANES UNDER CONSTRUCTION

SEE STANDARD 701606 FOR SIGNAGE



SEE STANDARD 701606 FOR ADDITIONAL DETAILS USE WITH STANDARD 701606

FILE = S:\PROJECTS\2011\1014211.RFD\Ave\DESIGN\TRANS\coveretc.dgn

REVISION	DATE	BY	REMARKS

DRAWN	D.L.B.
CHECKED	J.R.R.
APPROVED	G.F.S.

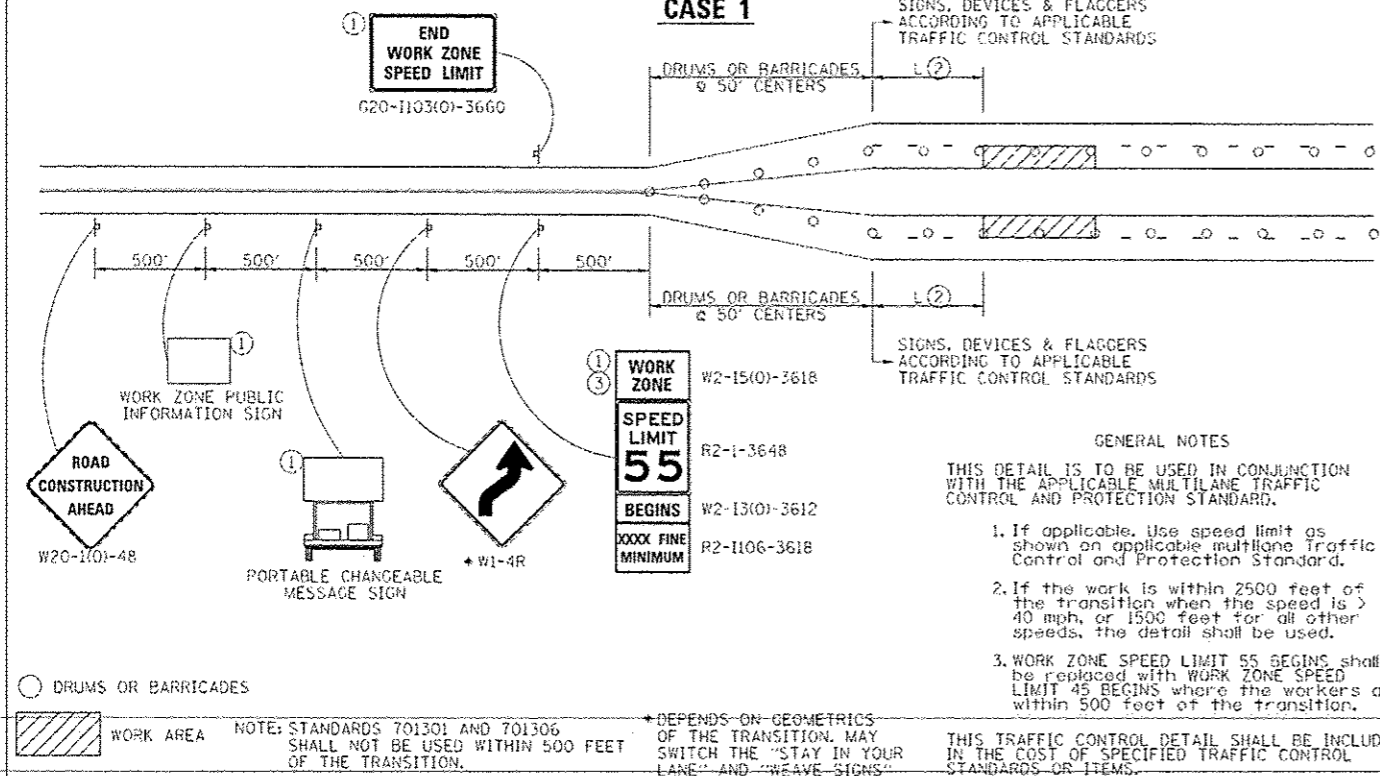
CITY OF ROCK FALLS
DIXON AVENUE RESURFACING PROJECT
2012

DIXON AVENUE
TRAFFIC CONTROL DETAIL

SECTION	11-00136-00-RS	COUNTY	WHITESIDE	TOTAL SHEETS	19	SHEET NO.	18
STA.		STA.		DATE	DCE, 14, 2012		
WHA #:	1014211						

TRAFFIC CONTROL FOR TRANSITION AREAS

CASE 1



GENERAL NOTES
 THIS DETAIL IS TO BE USED IN CONJUNCTION WITH THE APPLICABLE MULTILANE TRAFFIC CONTROL AND PROTECTION STANDARD.

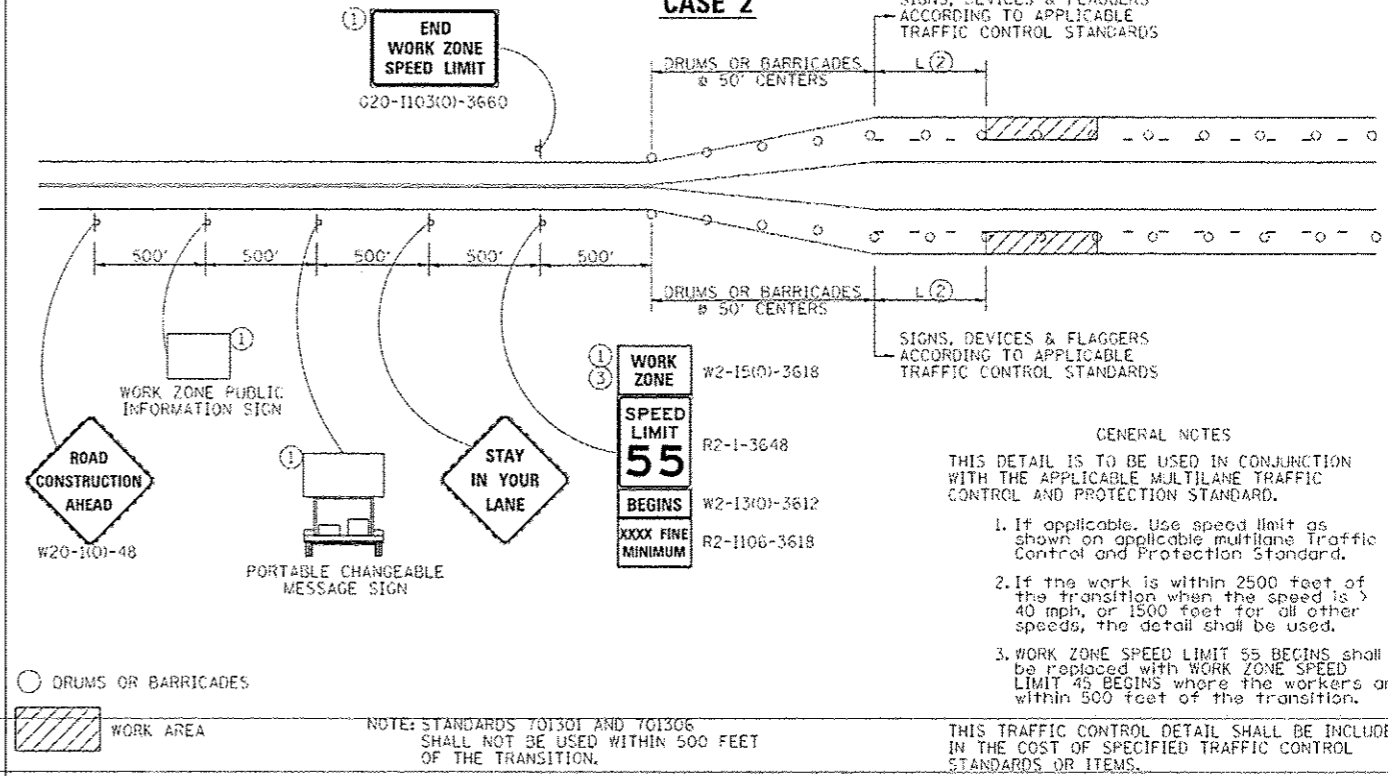
1. If applicable, Use speed limit as shown on applicable multilane Traffic Control and Protection Standard.
2. If the work is within 2500 feet of the transition when the speed is > 40 mph, or 1500 feet for all other speeds, the detail shall be used.
3. WORK ZONE SPEED LIMIT 55 BEGINS shall be replaced with WORK ZONE SPEED LIMIT 45 BEGINS where the workers are within 500 feet of the transition.

DESIGNED BY	REVISION	DATE	BY	REMARKS
STATE OF ILLINOIS DEPARTMENT OF TRANSPORTATION				

TRAFFIC CONTROL FOR TRANSITION AREAS SHEET 1 OF 4 38.1

TRAFFIC CONTROL FOR TRANSITION AREAS

CASE 2



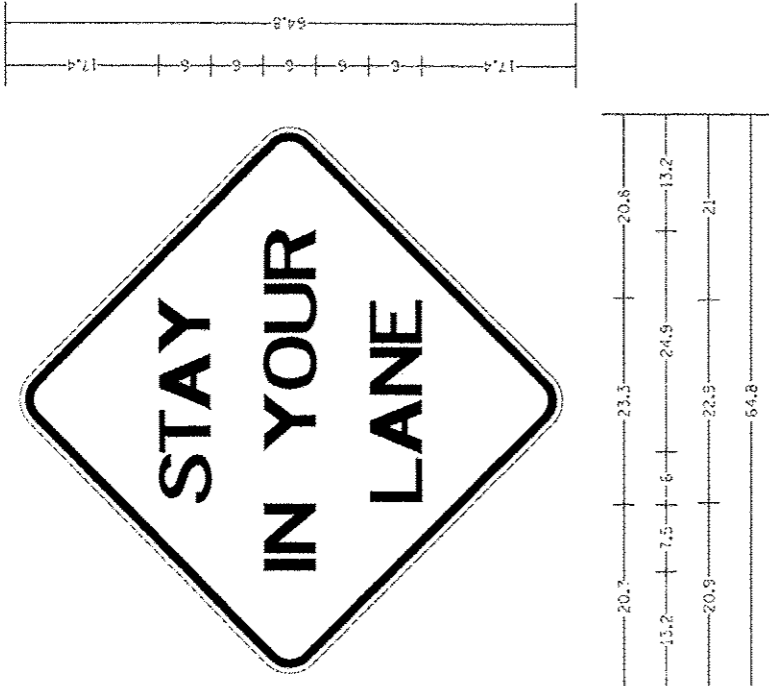
GENERAL NOTES
 THIS DETAIL IS TO BE USED IN CONJUNCTION WITH THE APPLICABLE MULTILANE TRAFFIC CONTROL AND PROTECTION STANDARD.

1. If applicable, Use speed limit as shown on applicable multilane Traffic Control and Protection Standard.
2. If the work is within 2500 feet of the transition when the speed is > 40 mph, or 1500 feet for all other speeds, the detail shall be used.
3. WORK ZONE SPEED LIMIT 55 BEGINS shall be replaced with WORK ZONE SPEED LIMIT 45 BEGINS where the workers are within 500 feet of the transition.

DESIGNED BY	REVISION	DATE	BY	REMARKS
STATE OF ILLINOIS DEPARTMENT OF TRANSPORTATION				

TRAFFIC CONTROL FOR TRANSITION AREAS SHEET 2 OF 4 38.1

STAY IN YOUR LANE SIGN DETAIL



48.0" across sides 3.8" Radius, 1.0" Border, 0.6" Indent, Black on Orange "STAY IN YOUR LANE" E Mod, "LANE" E Mod; Table of letter and object heights.

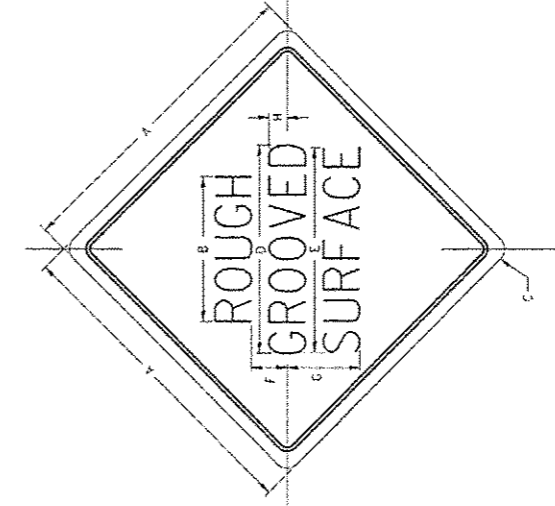
Letter	Height
S	20.7
T	26.5
A	31.5
Y	36.0
N	13.2
V	15.9
O	26.7
U	33.9
R	40.5
L	46.8
A	20.9
N	25.8
E	33.1
E	39.4

REVISED	DATE	BY	REMARKS
REGION 2 / DISTRICT 2 STANDARD			

STAY IN YOUR LANE SIGN DETAILS 40.2

ROUGH GROOVED SURFACE SIGN

ILLINOIS STANDARD W8-1107 SIGN PANEL TYPE 1



GENERAL NOTES
 SIGN PANELS AND FACE MATERIALS SHALL BE ACCORDING TO SECTION 720 OF THE STANDARD SPECIFICATIONS. METAL POSTS SHALL BE IN ACCORDANCE WITH STD. T20001. ALL MOUNTING HARDWARE SHALL BE ALUMINUM, STAINLESS STEEL, ZINC OR CADMIUM PLATED STEEL AND SHALL BE INCLUDED TO THE COST OF THE INSTALLATION. ALL DIMENSIONS ARE IN INCHES UNLESS OTHERWISE NOTED.

SIGN SIZE	DIMENSIONS							
	A	B	C	D	E	F	G	H
48x48	48.0	24.1	3.0	34.0	33.0	6.0	13.0	3.5

SIGN SIZE	MARGIN		BLANK STD.
	TC	TC	
48x48	0.8	1.2	B4-48D

REVISED	DATE	BY	REMARKS
REGION 2 / DISTRICT 2 STANDARD			

ROUGH GROOVED SURFACE SIGN 91.2

FILE = S:\PROJECTS\2011\0814\Z11_RFD\XAVE.DESIGN\TRANS.TYPICALS.DGN

REVISION	DATE	BY	REMARKS

DRAWN BY: D.L.B.
 CHECKED BY: J.R.R.
 APPROVED BY: C.F.S.

CITY OF ROCK FALLS
DIXON AVENUE RESURFACING PROJECT
 2012

WILETT HOFMANN ASSOCIATES INC.
 ENGINEERING ARCHITECTURE LAND SURVEYING
 809 EAST 2ND STREET, DIXON, IL 61021-0367
 T: 815-284-3381 DESIGN FIRM #164-02018

DIXON AVENUE		TOTAL SHEETS	SHEET NO.
DISTRICT STANDARDS 37.1, 40.2 & 91.2		19	19
SECTION: 11-00149-00-FP	COUNTY: WHITESIDE	DATE: DEC. 14, 2012	
STA: WHA #:	DATE:		