

STATE OF ILLINOIS
DEPARTMENT OF TRANSPORTATION
DIVISION OF HIGHWAYS
SAFE ROUTES TO SCHOOLS PROGRAM
SIDEWALK IMPROVEMENTS
CITY OF RUSHVILLE
SECTION 09-00018-00-SW
PROJECT - SRTS-4009(060)
SCHUYLER COUNTY

F.A. RITE.	SECTION	COUNTY	TOTAL SHEETS	SHEET NO.
	09-00018-00-SW	SCHUYLER	11	1
FED. ROAD DIST. NO.	ILLINOIS	CONTRACT NO.		

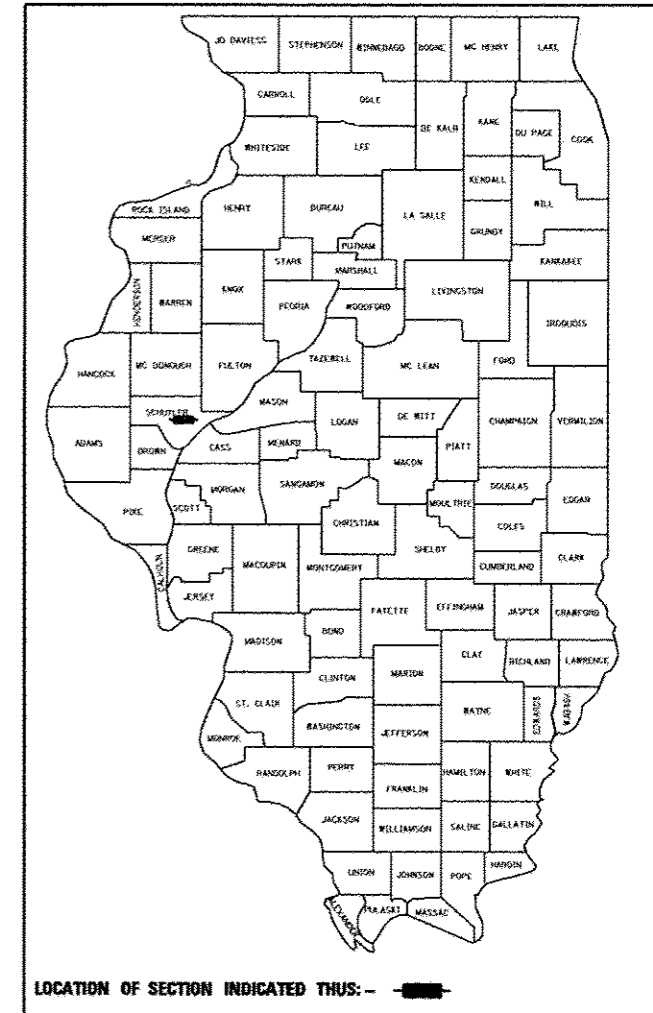
93587

INDEX OF SHEETS

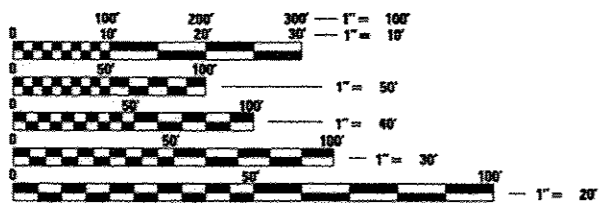
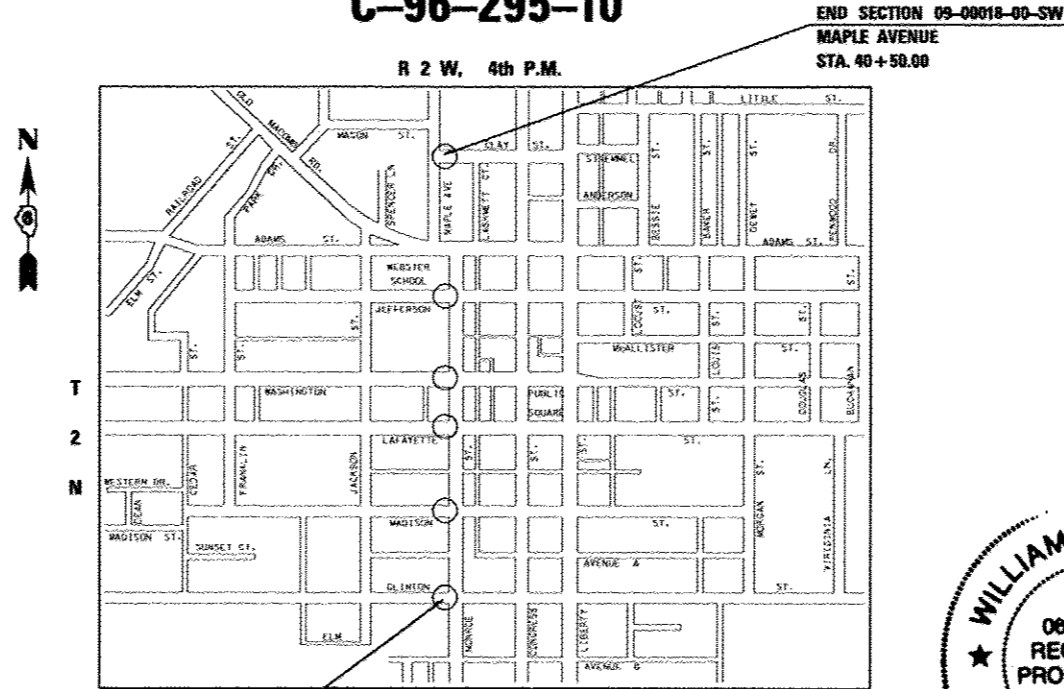
SHEET NO.	ITEM
1	COVER SHEET
2	GENERAL NOTES
3	SUMMARY OF QUANTITIES
4	SCHEDULE OF QUANTITIES
5	ALIGNMENT, TIES & BENCHMARKS
6-8	PLAN AND PROFILE
9	CONSTRUCTION DETAILS
10-11	CROSS SECTIONS

HIGHWAY STANDARDS

- 000001-06 - STANDARD SYMBOLS, ABBREVIATIONS AND PATTERNS
- 424001-07 - PERPENDICULAR CURB RAMPS FOR SIDEWALKS
- 006001-05 - CONCRETE CURB TYPE B AND COMBINATION CONCRETE CURB AND GUTTER
- 701501-06 - URBAN LANE CLOSURE, 2L, 2W, UNDIVIDED
- 701801-05 - SIDEWALK, CORNER OR CROSSWALK CLOSURE
- 701901-02 - TRAFFIC CONTROL DEVICES

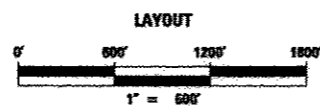


C-96-295-10



FULL SIZE PLANS HAVE BEEN PREPARED USING STANDARD ENGINEERING SCALES. REDUCED SIZED PLANS WILL NOT CONFORM TO STANDARD SCALES. IN MAKING MEASUREMENTS ON REDUCED PLANS, THE ABOVE SCALES MAY BE USED.

BEGIN SECTION 09-00018-00-SW
 CLINTON STREET
 STA. 10+00.00



LENGTH OF IMPROVEMENT = 3050.00 FEET = 0.574 MILES
 NET LENGTH OF IMPROVEMENT = 222.34 FEET = 0.042 MILES



EXPIRES: 11-30-2013

BY:
 DATE: Oct. 24, 2012

J.U.L.I.E.
 JOINT UTILITY LOCATION INFORMATION FOR EXCAVATION
 1-800-892-0123
 OR 811

STATE OF ILLINOIS DEPARTMENT OF TRANSPORTATION DIVISION OF HIGHWAYS	
APPROVED	20 12
MAYOR - CITY OF RUSHVILLE	
PASSED <u>November 9</u>	20 12
<u>Terence J. [Signature]</u> DISTRICT 6 ENGINEER OF LOCAL ROADS & STREETS	
PASSED <u>November 9</u>	20 12
<u>Ron [Signature]</u> DISTRICT 6 CONSTRUCTION ENGINEER	
Releasing For Bid Based on Limited Review	<u>November 9</u> 20 12
<u>[Signature]</u> DEPUTY DIRECTOR OF HIGHWAYS, REGION 4 ENGINEER	

CONTRACT NO. 93587

BENTON & ASSOCIATES, INC. 1970 W. Lafayette Ave., Jacksonville IL 62650 (217) 245-4146 (217) 245-4149 Fax	 <small>Kirksville Missouri Macomb Illinois</small>
----------------------------------------------------------------------------------------------------------------------------	------------------------------------------------------------

**PRINTED BY THE AUTHORITY
OF THE STATE OF ILLINOIS**