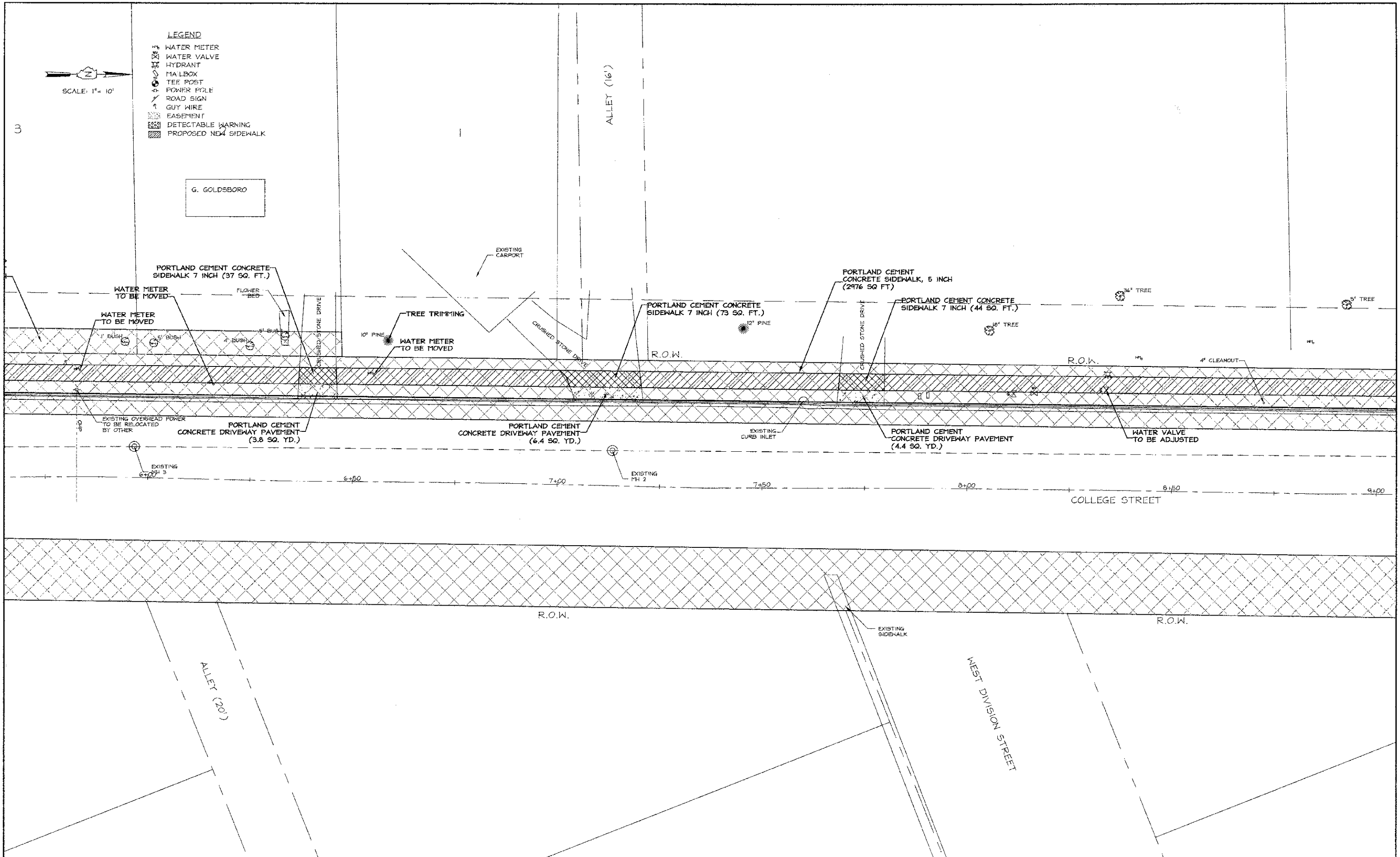


SCALE: 1" = 10'

- LEGEND**
- WATER METER
 - WATER VALVE
 - HYDRANT
 - MANHOLE
 - TEE POST
 - POWER POLE
 - ROAD SIGN
 - GUY WIRE
 - EASEMENT
 - DETECTABLE WARNING
 - PROPOSED NEW SIDEWALK

G. GOLDSBORO

ALLEY (16')



NO.	DESCRIPTION	BY	DATE	NO.	DESCRIPTION	BY	DATE
					DESIGNED		
					DRAWN	WFL	12/12/12
					CHECKED	JHC	12/12/12

VILLAGE OF BROWNSTOWN
 FAYETTE COUNTY, IL
 SAFE ROUTES TO SCHOOL
 PLAN SHEET

JOHN H. CRAWFORD & ASSOCIATES, P.C.
 CIVIL ENGINEERS, LAND SURVEYORS
 201 SOUTH DIVISION STREET, CARTERSVILLE, ILLINOIS 62918
 PHONE (618) 985-6370 FAX (618) 985-4892
 PROFESSIONAL DESIGN FIRM # 184-002886

SHEET NO.	
6 of 12	
ISSUE	DATE
A	12/12/12