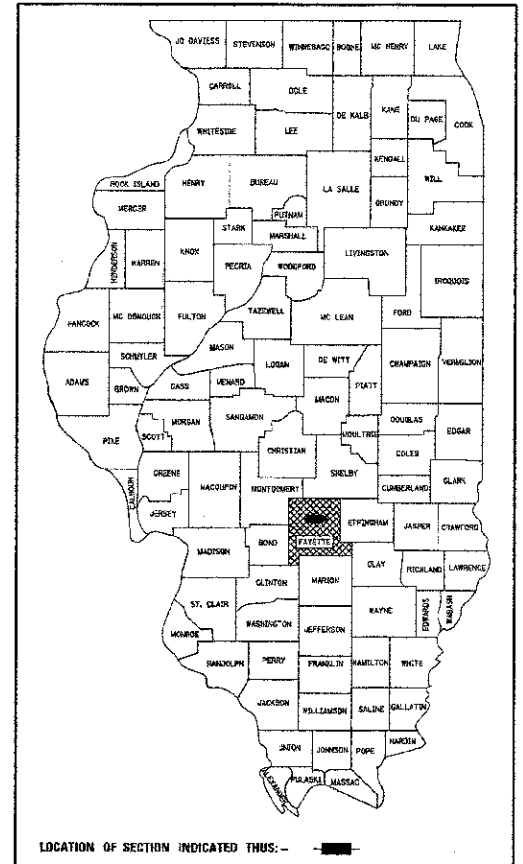


STATE OF ILLINOIS
DEPARTMENT OF TRANSPORTATION

PLANS FOR PROPOSED
HIGHWAY BRIDGE PROGRAM

TR 221 OVER SUCK CREEK
SECTION 11-13133-00-BR
PROJECT NO. BROS-0051(092)
SEFTON ROAD DISTRICT
FAYETTE COUNTY
JOB NO. C-97-079-12



LOCATION OF SECTION INDICATED THUS: [Symbol]

FAYETTE COUNTY
HIGHWAY DEPARTMENT

APPROVED 12-21, 2012
Michael S. [Signature]
FAYETTE COUNTY, COUNTY ENGINEER

PASSED 1-9, 2013
[Signature]
DISTRICT SEVEN ENGINEER OF LOCAL ROADS & STREETS

RELEASING FOR BID
BASED ON LIMITED
REVIEW 1-9, 2013
[Signature]
DEPUTY DIRECTOR OF HIGHWAYS, REGION FOUR ENGINEER

PRINTED BY THE AUTHORITY
OF THE STATE OF ILLINOIS

CONTRACT NO. 95698

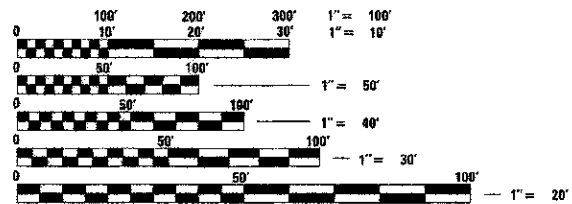
ROUTE	SECTION	COUNTY	TOTAL SHEETS	SHEET NO.
TR 221	11-13133-00-BR	FAYETTE	11	1
RAAI JOB NO. 50912			ILLINOIS FED. AID PROJECT	

- INDEX OF SHEETS**
- COVER SHEET
 - SUMMARY OF QUANTITIES, GENERAL NOTES, AND TYPICAL SECTIONS
 - PLAN AND PROFILE OF ROADWAY
 - GENERAL PLAN AND ELEVATION
 - 5.-6. PRECAST PRESTRESSED CONCRETE DECK BEAM DETAILS
 7. STEEL RAILING, TYPE S1 DETAILS
 8. ABUTMENT DETAILS
 9. HP PILE DETAILS
 - 10.-11. CROSS SECTIONS OF ROADWAY

- HIGHWAY STANDARDS (SEE SPECIFICATIONS)
- 000001-06 STANDARD SYMBOLS, ABBREVIATIONS AND PATTERNS
 - 280001-07 TEMPORARY EROSION CONTROL SYSTEMS
 - 515001-03 NAME PLATE FOR BRIDGES
 - 635006-03 REFLECTOR AND TERMINAL MARKER PLACEMENT
 - 701901-02 TRAFFIC CONTROL DEVICES
 - B.L.R. 21-9 TYPICAL APPLICATION OF TRAFFIC CONTROL DEVICES FOR CONSTRUCTION ON RURAL LOCAL HIGHWAYS

SOIL BORINGS (SEE SPECIFICATIONS)

DESIGN CLASSIFICATION: RURAL LOCAL ROAD
ADT₂₀₁₁ : 50
DESIGN SPEED: 30 MPH

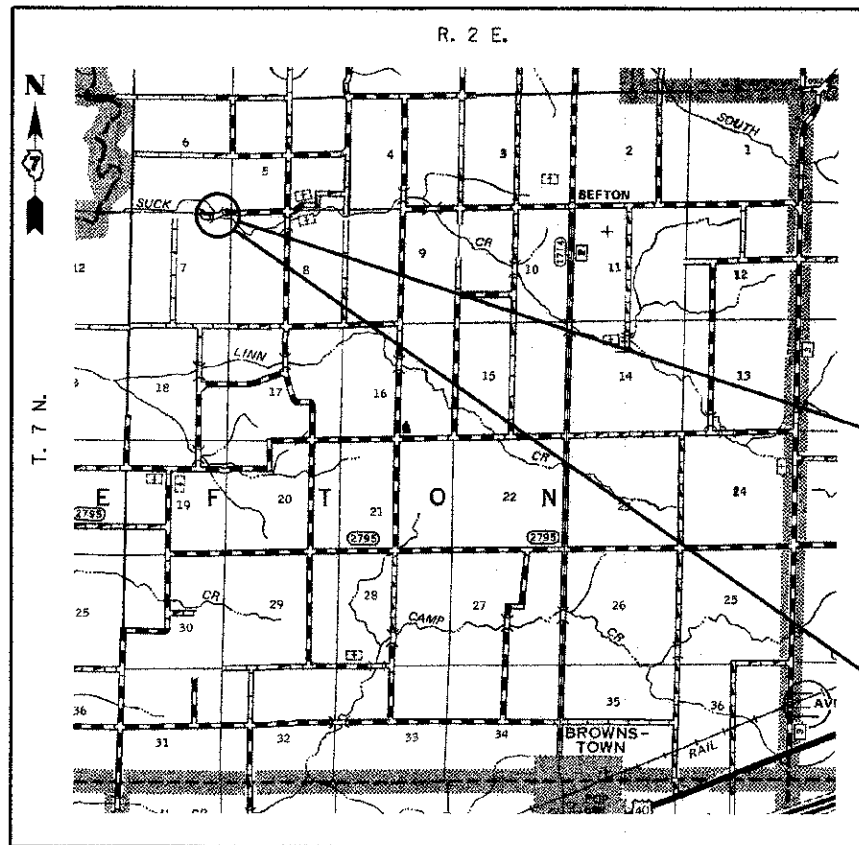


FULL SIZE PLANS HAVE BEEN PREPARED USING STANDARD ENGINEERING SCALES, REDUCED SIZED PLANS WILL NOT CONFORM TO STANDARD SCALES, IN MAKING MEASUREMENTS ON REDUCED PLANS, THE ABOVE SCALES MAY BE USED.

J.U.L.I.E.
JOINT UTILITY LOCATING INFORMATION FOR EXCAVATORS
1-800-892-0123 or 811 Website: <http://www.illinois1call.com>



[Signature] 12-20-2012
GARY L. HAHN
CENTRALIA, ILLINOIS
ILLINOIS LICENSED PROFESSIONAL
ENGINEER NO. 62-42606
EXPIRES NOV. 30, 2013



SECTION BEGINS
STA. 8+55.00

SECTION 11-13133-00-BR INCLUDES THE CONSTRUCTION OF A SINGLE SPAN PRECAST PRESTRESSED CONCRETE DECK BEAM BRIDGE CARRYING TR 221 OVER SUCK CREEK, 80'-0" BK. TO BK. ABUTMENTS X 24' WIDE, NO SKEW. EXISTING STRUCTURE NO. 026-3096 PROPOSED STRUCTURE NO. 026-3457

SECTION ENDS
STA. 11+82.29

LOCATION: NEAR THE SE CORNER OF SECTION 6, T7N, R2E, 3RD P.M.
NET LENGTH OF PROJECT: 327.29 FT. = 0.062 MI.

RHUTASEL and ASSOCIATES, INC.
CONSULTING ENGINEERS • LAND SURVEYORS
CENTRALIA, ILLINOIS FREEBURG, ILLINOIS
ILLINOIS DESIGN FIRM LICENSE NO. 184-000287