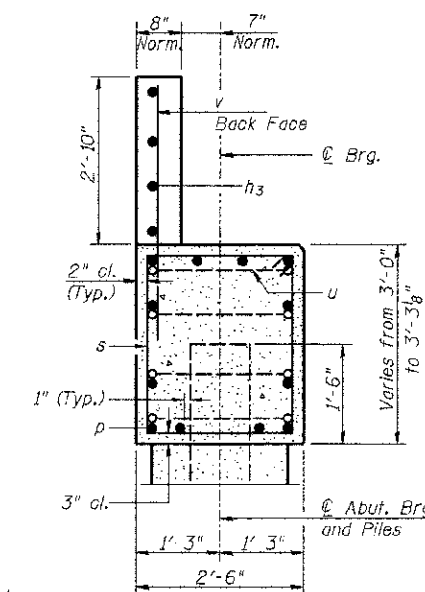
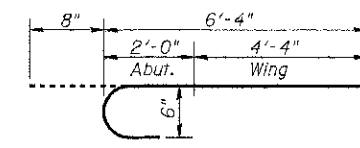


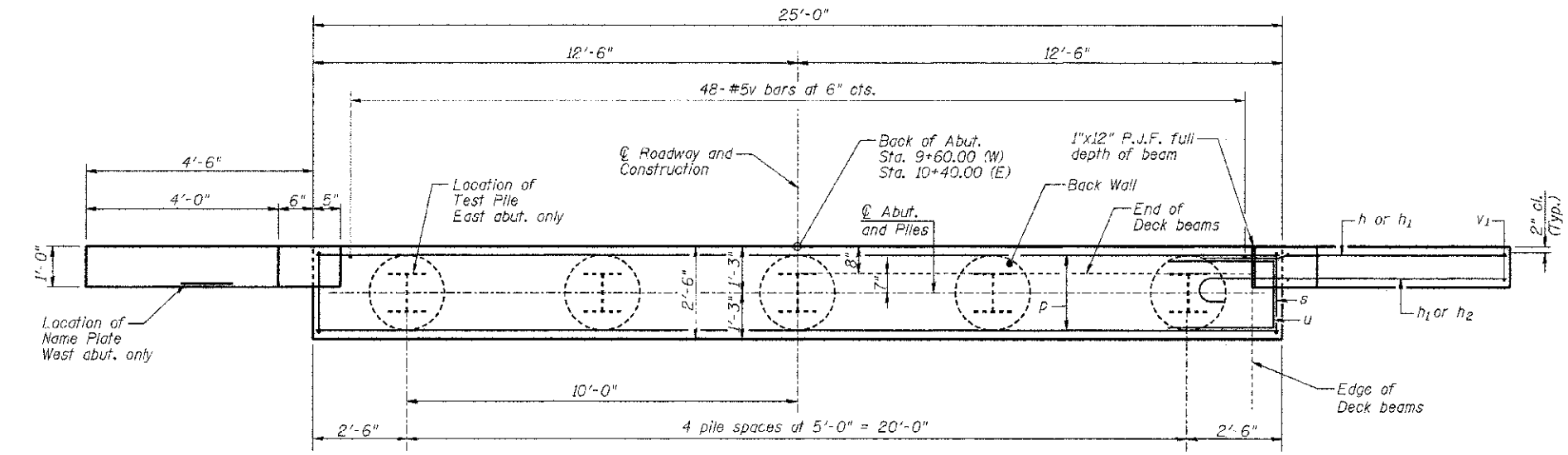
ELEVATION



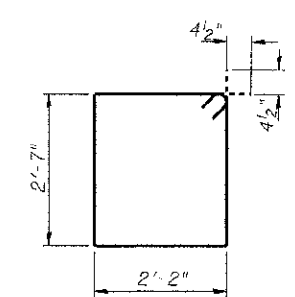
SEC. THRU ABUT.
(Normal to CL)



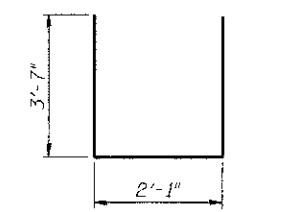
BAR h2



PLAN



BAR s



BAR u

BILL OF MATERIAL FOR ONE ABUTMENT

Bar	No.	Size	Length	Shape
h	12	#6	8'-0"	—
h ₁	24	#5	4'-7"	—
h ₂	12	#6	7'-0"	—
h ₃	4	#5	23'-8"	—
p	12	#7	24'-8"	—
s	26	#4	10'-3"	□
u	8	#6	9'-3"	—
v	48	#5	4'-6"	—
v ₁	20	#5	5'-6"	OUT IN FIELD
Concrete Structures		Cu. Yd.	10.8	
Concrete Encasement		Cu. Yd.	1.8	
Reinforcement Bars		Pound	1770	
Furnishing Steel		Foot	W. Abut. 260	
Piles, HP12x53		Foot	E. Abut. 228	
Driving Piles		Foot	W. Abut. 260	
		Foot	E. Abut. 228	
Test Pile, Steel HP12x53	Each	W. Abut.	0	
		E. Abut.	1	
Pile Shoes	Each	W. Abut.	5	
		E. Abut.	5	

For details of piles and Concrete Encasement, see Sheet 9 of 11.

PILE DATA WEST ABUTMENT

Type: Steel HP12x53
 Nominal Required Bearing: 277 kips
 Factored Resistance Available: 152 kips
 Estimated Length: 52'/pile
 No. Production Piles w/Pile Shoes: 5
 No. Test Piles w/Pile Shoes: 0

PILE DATA EAST ABUTMENT

Type: Steel HP12x53
 Nominal Required Bearing: 280 kips
 Factored Resistance Available: 154 kips
 Estimated Length: 57'/pile
 No. Production Piles w/Pile Shoes: 4
 No. Test Piles w/Pile Shoes: 1

GENERAL NOTES

- All exposed edges shall have standard 3/4" chamfer, unless otherwise noted.
- Reinforcement bars shall conform to ASTM A 706 (IL Modified), Grade 60.
- All clearances between rebar and form surface shall be 2", unless otherwise noted.
- Space reinforcement in cap to miss PPCDB dowel rods.
- The Steel H-piles shall be according to AASHTO M270 Grade 50.
- The Contractor shall drive one (1) Steel HP12x53 Test Pile in a production location at the East abutment as directed by the Engineer before ordering the remainder of the piles.
- The Test Pile shall be driven to 110 percent of the Nominal Required Bearing indicated in the pile data information.

RHUTASEL and ASSOCIATES, INC.
 CONSULTING ENGINEERS • LAND SURVEYORS
 CENTRALIA, ILLINOIS FREEBURG, ILLINOIS
 ILLINOIS DESIGN FIRM LICENSE NO. 184-000287

DESIGNED -	BLT	REVISED -	
DRAWN -	JN	REVISED -	
CHECKED -	WDL	REVISED -	
DATE -	12/20/2012	REVISED -	

STATE OF ILLINOIS
DEPARTMENT OF TRANSPORTATION

ABUTMENT DETAILS
STRUCTURE NO. 026-3457

ROUTE	SECTION	COUNTY	TOTAL SHEETS	SHEET NO.
TR 221	11-13133-00-BR	FAYETTE	11	8
CONTRACT NO. 95698				
RAAI JOB NO. 50912 ILLINOIS FED. AID PROJECT				