

C.H.	SECTION	COUNTY	TOTAL SHEETS	SHEET NO.
12	=	SHELBY	24	1
FED. ROAD DIST. NO.		ILLINOIS FED. AID PROJECT		

* 09-00267-00-BR

CONTRACT No. 95700



STATE OF ILLINOIS DEPARTMENT OF TRANSPORTATION PLANS FOR PROPOSED SURFACE TRANSPORTATION RURAL PROGRAM

**COUNTY HIGHWAY 12
SECTION 09-00267-00-BR
COLD SPRING ROAD DISTRICT
SHELBY COUNTY
STRUCTURE NO. 087-3574
PROJECT NO. RS-0173(179)
JOB NUMBER C-97-021-13**

INDEX OF SHEETS	
SHEET NO.	DESCRIPTION
1	COVER SHEET
2	STANDARDS, GENERAL NOTES, & SUMMARY OF QUANTITIES
3	SCHEDULE OF QUANTITIES
4	TYPICAL SECTIONS, ENTRANCE DETAILS RIPRAP LAYOUT DETAILS & LAYOUT TIES
5	PLAN
6	PROFILE
7-13	CROSS SECTIONS
14-24	BRIDGE PLANS

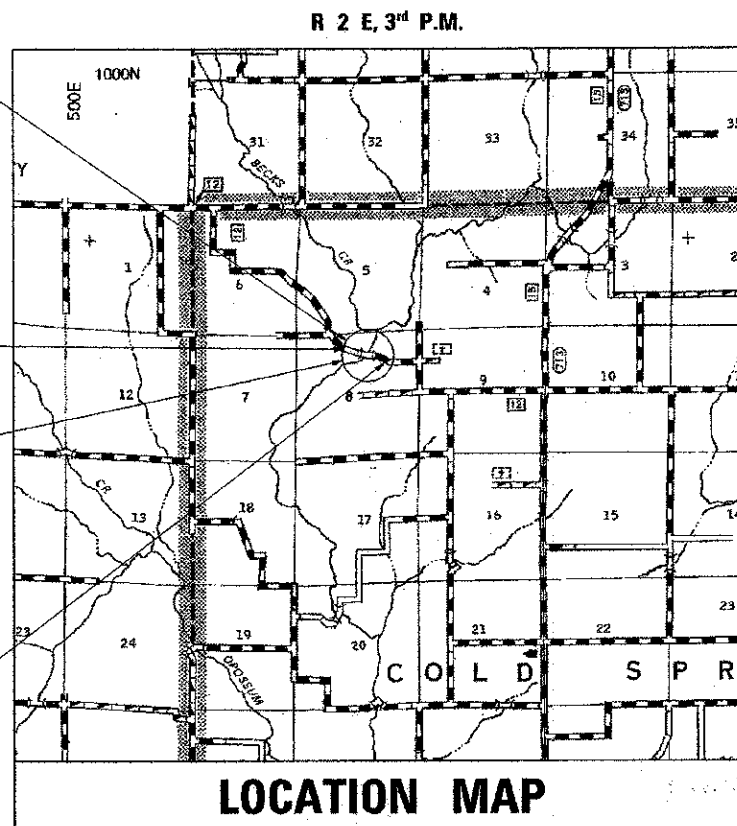
IDOT HIGHWAY STANDARDS
SEE SHEET 2 FOR
STANDARDS, GENERAL NOTES & SUMMARY OF QUANTITIES

EXISTING STRUCTURE NO. 087-3302

TWO SPAN STEEL BEAM BRIDGE W/ OIL & CHIP SURFACE. THE STRUCTURE IS 83'-0" BK. TO BK. OF ABUTMENTS WITH AN 18'-0" WIDTH AND IS SKEWED FORWARD LEFT. THE ABUTMENTS ARE TIMBER BACKWALLS SUPPORTED BY TIMBER PILES. WINGWALLS ARE TIMBER. THERE IS A STEEL RAILING ON EACH SIDE OF BRIDGE.

STA. 9+95.00 SPECIAL BRIDGE DESIGN

3 - SPAN 27" P.P.C. DECK BEAM BRIDGE ON PILE BENT ABUTMENTS AND PIERS. 130'-0" BK TO BK OF ABUTMENTS 24'-0" CLEAR WIDTH, SKEW = 30° FWD LT STRUCTURE NO. 087-3574



LOCATION MAP

SCALES

PLAN	0	50	100
PROFILE HORIZ.	0	50	100
PROFILE VERT.	0	5	10
CROSS SECTIONS HORIZ.	0	10	20
CROSS SECTIONS VERT.	0	5	10

FULL SIZE PLANS HAVE BEEN PREPARED USING STANDARD ENGINEERING SCALES, REDUCED SIZED PLANS WILL NOT CONFORM TO STANDARD SCALES. WHEN MAKING MEASUREMENTS ON REDUCED PLANS, THE ABOVE SCALES MAY BE USED.

ie CONSULTANTS, INC.
6420 SOUTH SIXTH STREET RD
SPRINGFIELD, ILLINOIS 62712
TEL. (217) 529-8027
FAX (217) 529-4543
WWW.IE-CONSULTANTS.COM

CALL J.U.L.I.E. (JOINT UTILITY LOCATING INFORMATION FOR EXCAVATORS)
48 Hours (2 working days) Before You Dig.
TOLL FREE: 1 (800) 892-0123 OR 811

APPROXIMATE SCALE: 0 1 2 MILES

NET LENGTH OF PROJECT = 1,500.00 FEET (0.284 MILES)
HIGHWAY CLASSIFICATION = MINOR COLLECTOR (NON URBAN)
CURRENT ADT = 225
DESIGN SPEED = 30 MPH



DAVID BOOHER, ILLINOIS P.E. 062-043769
EXPIRES 11/30/2013

1-2-2013
DATE

APPROVED 1-03 2013
S. Allen
COUNTY ENGINEER, SHELBY COUNTY

PASSED 1/16 2013
M. E. Cantel
DISTRICT SEVEN ENGINEER OF
LOCAL ROADS & STREETS

Releasing For
Bid Based on
Limited Review

1/16 2013
Roger A. Anselmi
DEPUTY DIRECTOR OF HIGHWAYS,
REGION FOUR ENGINEER
STATE OF ILLINOIS
DEPARTMENT OF TRANSPORTATION

THE STATE OF ILLINOIS DEPARTMENT OF TRANSPORTATION