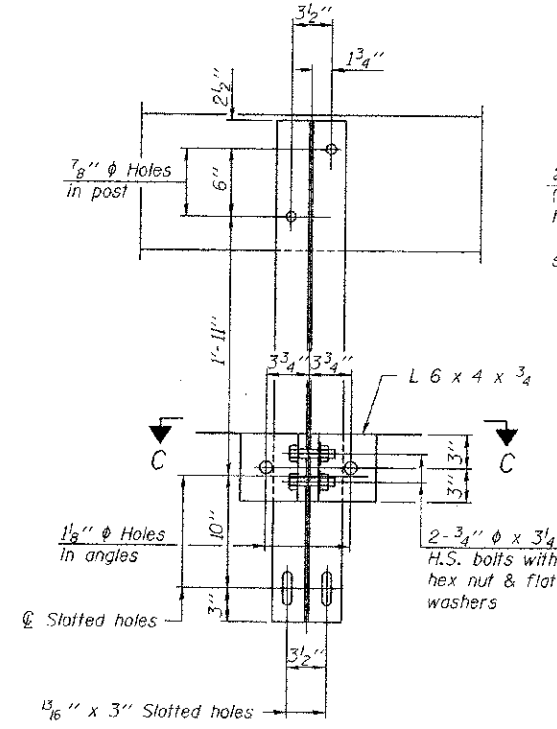


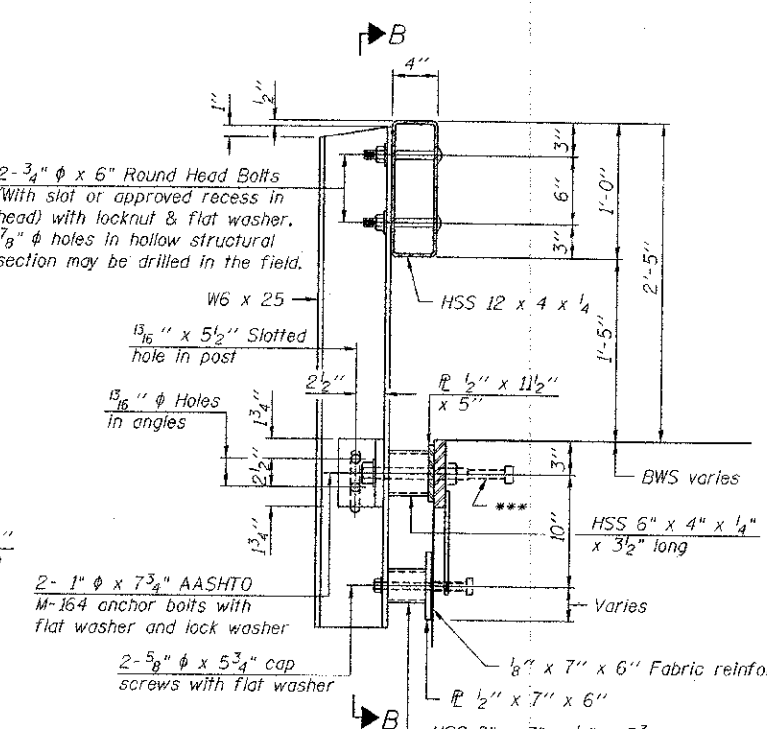
\*\*\*\* Cost of Curled End Section shall be included in the Price of Steel Railing, Type S-1 and shall not be paid for separately.

Curled End Section \*\*\*\*  
Typical NW & SE Corners  
See sheet 11 of 11 for details

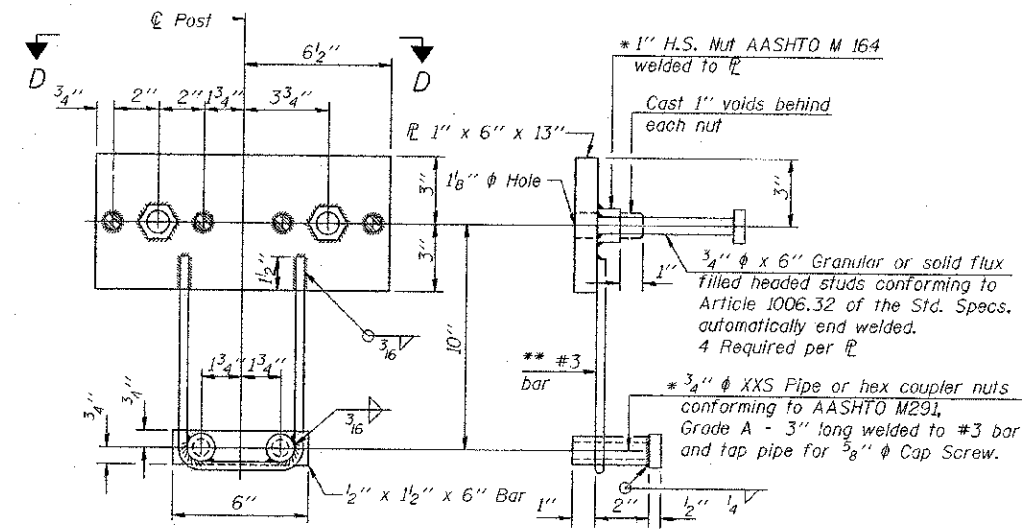
RAIL POST SPACING ON OUTSIDE BEAMS - ELEVATION VIEW



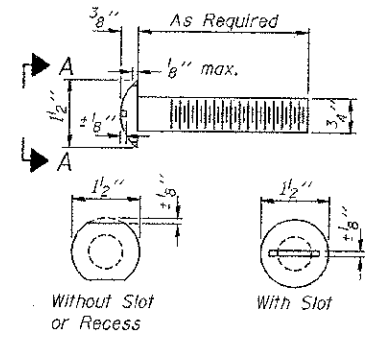
SECTION B-B



SECTION AT RAILING POST



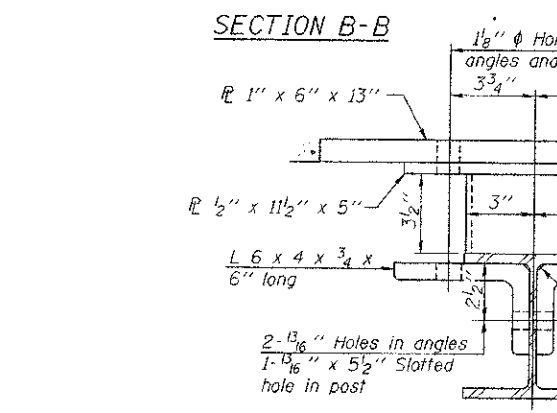
ANCHOR DEVICE



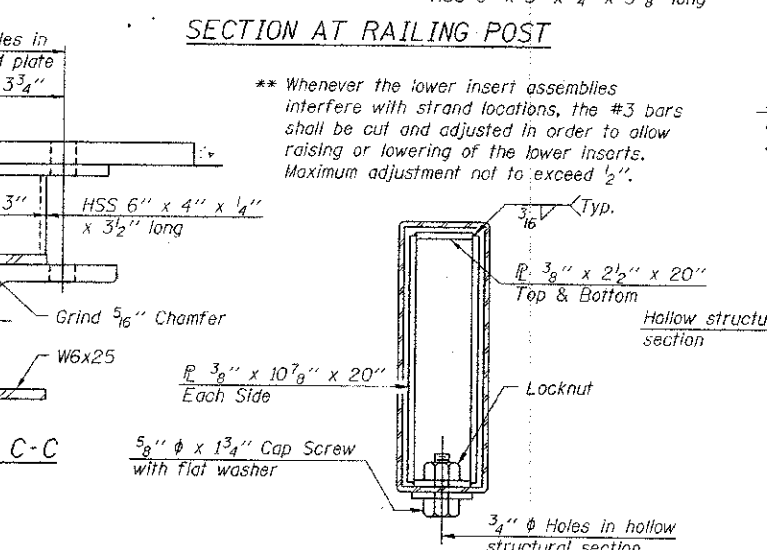
VIEW A-A  
ROUND HEAD BOLT

Notes:  
All field drilled holes shall be coated with an approved zinc rich paint before erection.  
For multi-span bridges, sufficient 1/4" x 6" x 1'-2" galvanized steel shims shall be provided to align rail between adjacent spans. Cost included with Steel Railing, Type S-1.  
All steel rail elements shall be galvanized according to Article 509.05 of the Standard Specifications.

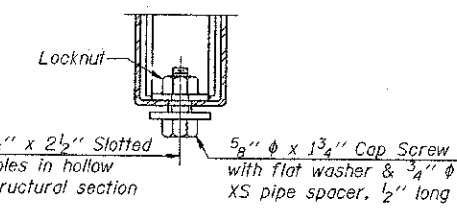
\*\*\* The studs of the anchor devices shall be placed below the top reinforcement bars and the outermost longitudinal reinforcement bar shall be placed directly above the studs of the rail post anchor device.



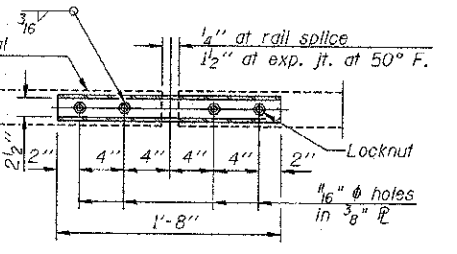
SECTION C-C



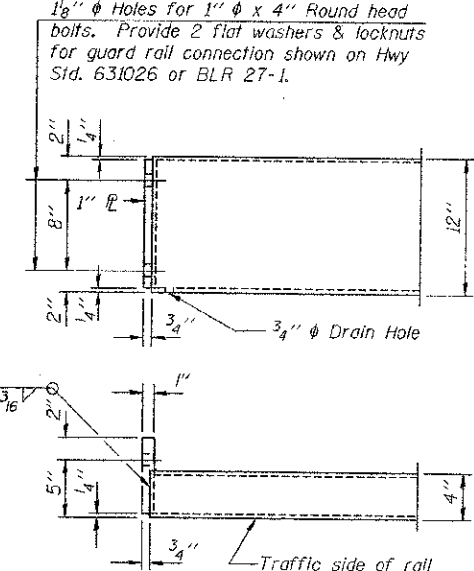
SECTIONS AT RAIL SPLICE



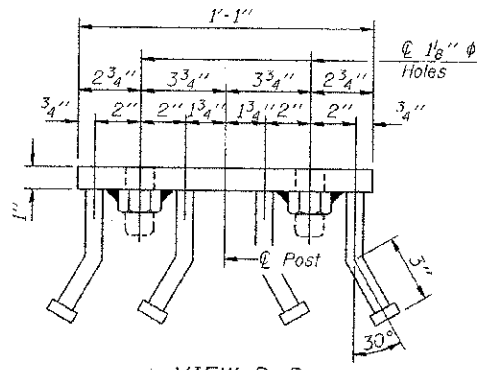
RAIL SPLICE CONNECTION AT EXPANSION JT.



PLAN-BOTT. SPLICE TYPICAL



END OF RAIL DETAILS



VIEW D-D

BILL OF MATERIAL

Item	Unit	Quantity
Steel Railing, Type S-1	Foot	258

**ie** CONSULTANTS, INC.  
6420 SOUTH SIXTH STREET RD  
SPRINGFIELD, ILLINOIS 62712  
TEL. (217) 529-8027  
FAX (217) 529-4543  
IESPRINGFIELD@IE-CONSULTANTS.COM  
WWW.IE-CONSULTANTS.COM

R-23A 7-1-10 (10'-9" Maximum Post Spacing)

FILE NAME =	USER NAME =	DESIGNED - SCD	REVISED -
		CHECKED - DRB	REVISED -
		DRAWN - JEB	REVISED -
		CHECKED - SCD	REVISED -

STATE OF ILLINOIS  
DEPARTMENT OF TRANSPORTATION

STEEL RAILING, TYPE S-1  
STRUCTURE NO. 087-3574

SHEET NO. 2 OF 11 SHEETS

C.H. RTE.	SECTION	COUNTY	TOTAL SHEETS	SHEET NO.
12	09-00267-00-BR	SHELBY	24	15
				CONTRACT NO. 95700
ILLINOIS FED. AID PROJECT				