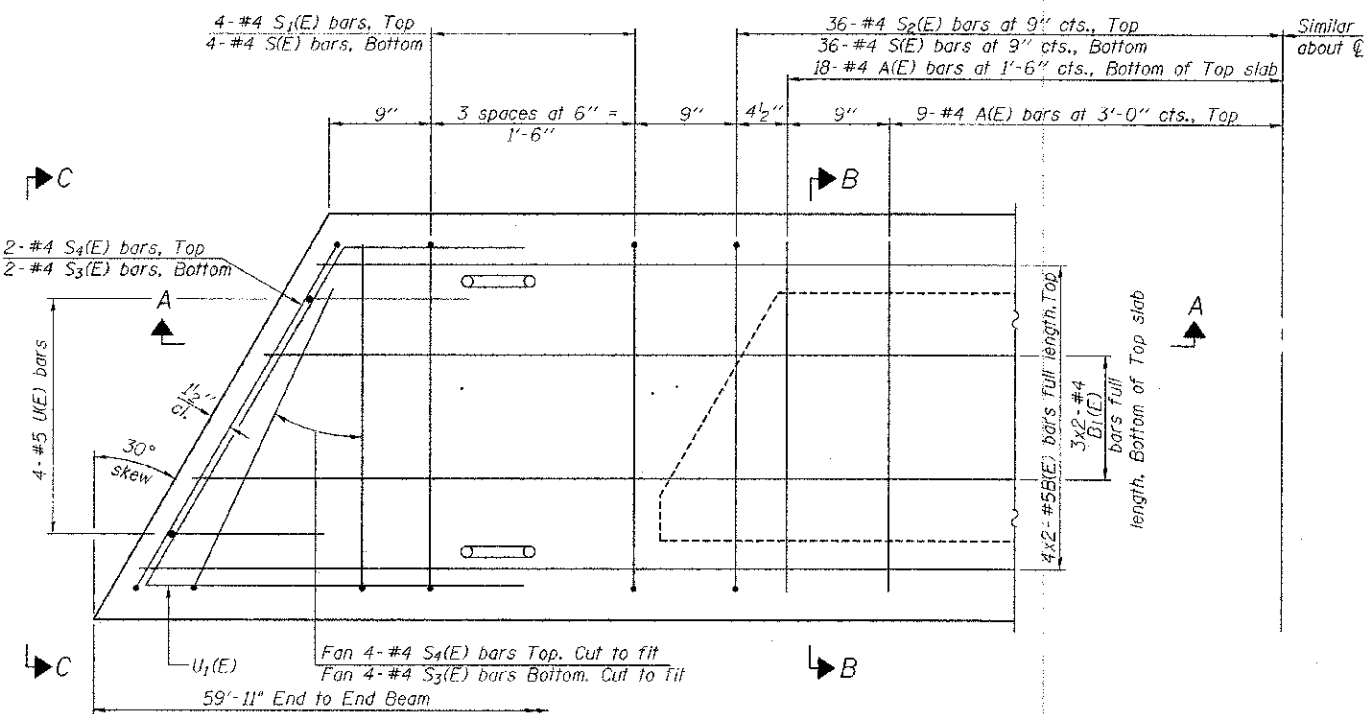


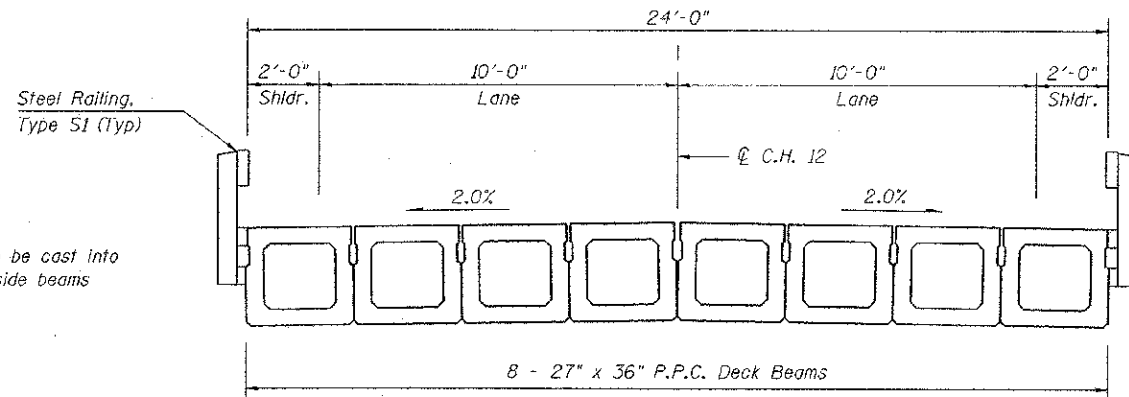
SECTION A-A



PLAN VIEW

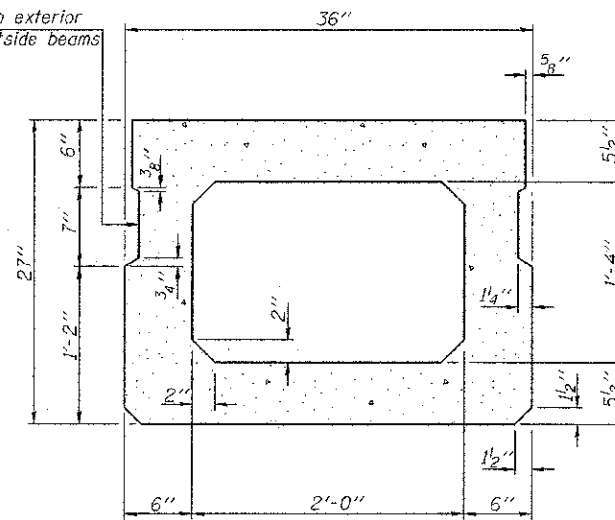
Note: Spacing of S1(E) and S2(E) bars may be adjusted up to 4" in the immediate area of the transverse tie diaphragms to miss the block outs for the transverse ties.

\* Rail Post Anchors to be cast into exterior face of outside beams

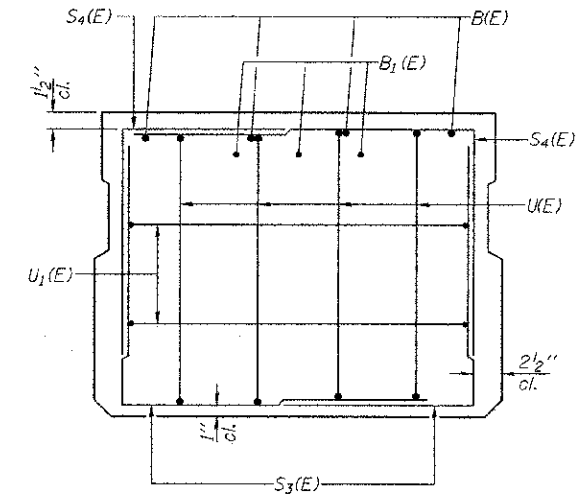


CROSS SECTION

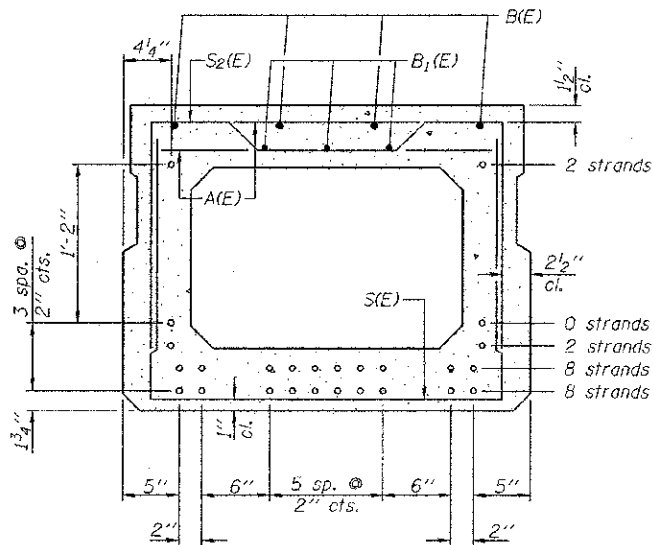
Omit key on exterior face of outside beams



SECTION B-B  
(Showing dimensions)



VIEW C-C



SECTION B-B

(Showing reinforcement and permissible strand locations)  
Note: Place the number of strands specified in each row symmetrically about the centerline of beam in the permissible strand locations shown.

MINIMUM BAR LAP  
#4 bar = 2'-0"  
#5 bar = 2'-6"

BAR LIST  
ONE BEAM ONLY  
(For information only)

Bar	No.	Size	Length	Shape
A(E)	54	#4	2'-7"	—
B(E)	8	#5	31'-1"	—
B1(E)	6	#4	30'-9"	—
S(E)	80	#4	6'-5"	┌
S1(E)	8	#4	5'-11"	┌
S2(E)	72	#4	6'-2"	┌
S3(E)	12	#4	4'-7"	┌
S4(E)	12	#4	4'-4"	┌
U(E)	8	#5	4'-6"	┌
U1(E)	4	#4	6'-10"	┌

Note: See sheet 6 of 11 for additional details and Bill of Material.

**ie** CONSULTANTS, INC  
6420 SOUTH SIXTH STREET RD  
SPRINGFIELD, ILLINOIS 62712  
TEL. (217) 529-8027  
FAX (217) 529-4543  
IESPRINGFIELD@IE-CONSULTANTS.COM  
WWW.IE-CONSULTANTS.COM

PD-2736-L 7-1-10

FILE NAME =	USER NAME =	DESIGNED - SCD	REVISED -
		CHECKED - DRB	REVISED -
		DRAWN - JEB	REVISED -
		CHECKED - SCD	REVISED -

STATE OF ILLINOIS  
DEPARTMENT OF TRANSPORTATION

27" x 36" PPC DECK BEAM  
SPAN 2 - STRUCTURE NO. 087-3574

C.H. RTE.	SECTION	COUNTY	TOTAL SHEETS	SHEET NO.
12	09-00267-00-BR	SHELBY	24	18
SHEET NO. 6 OF 11 SHEETS			CONTRACT NO. 95700	
ILLINOIS FED. AID PROJECT				