

GENERAL NOTES:

THIS SECTION SHALL BE CONSTRUCTED IN ACCORDANCE WITH THE PLANS, SPECIAL PROVISIONS AND STANDARD SPECIFICATIONS FOR ROAD AND BRIDGE CONSTRUCTION, ADOPTED JANUARY 1, 2012.

THE WORK INVOLVED ON THIS SECTION CONSISTS OF THE REMOVAL OF THE EXISTING STRUCTURE, THE CONSTRUCTION OF A 70 FOOT LONG SINGLE SPAN PRECAST, PRESTRESSED CONCRETE BEAM BRIDGE, EARTH APPROACHES, AGGREGATE SURFACE COURSE AND OTHER MISCELLANEOUS ITEMS NECESSARY TO COMPLETE THIS SECTION.

ALL ELEVATIONS ARE BASED ON U.S.G.S. MEAN SEA LEVEL DATUM.

IT SHALL BE THE CONTRACTOR'S RESPONSIBILITY TO CONTACT ALL THE UTILITIES AFFECTING THE PROJECT, PRIOR TO CONSTRUCTION.

NOTE: CONSTRUCTION TRANSITION STA. 2+25 TO STA 2+75 STA 7+30 TO STA 7+80

ALL QUANTITIES ARE INCLUDED IN THE PROPOSAL.

TR	SECTION	COUNTY	TOTAL SHEETS	SHEET NO.
27	10-0517-00-0R	WHITE	13	2

322 W. 8RD ST
P.O. BOX 160
MT. CARMEL, IL 62863
PHONE: (618) 262-8651
FAX: (618) 263-3327
408 W. STATE ST
SUITE 100
FRANCISVILLE, IN 47674
PHONE: (812) 386-7811
FAX: (812) 386-2812



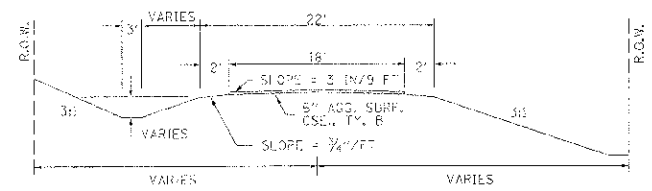
PROFESSIONAL DESIGN FIRM
LAND SURVEY & PROFESSIONAL ENGINEERING CORPORATION
184-200687
(62-032435)35 0027691

AARON M. MEFFORD
NAME
SIGNATURE
12-14-12
DATE
11-30-13
EXPIRES

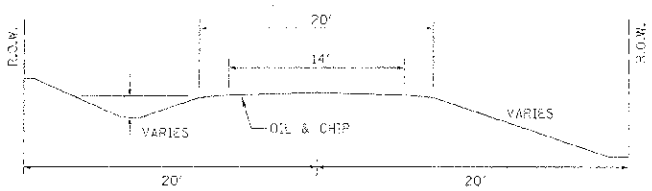
TOWNSHIP ROUTE 27
OVER FRENCH CREEK
WHITE COUNTY, ILLINOIS

SHEET TITLE:
PLAN & PROFILE
SCALE: VARS
BY: AMM
DATE: 04/12
REV:
2 OF 13
SHEETS
SHEET NO. 2

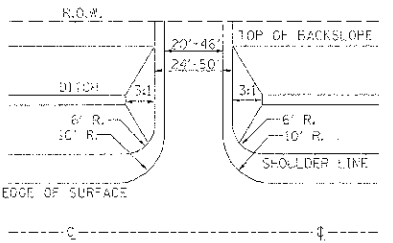
TYPICAL CROSS SECTION PROPOSED



TYPICAL CROSS SECTION EXISTING



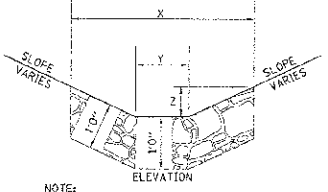
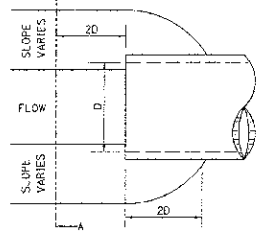
FIELD ENTRANCE DETAIL



NOTE: CONSTRUCT SPECIAL DITCH
STA 3+00 TO STA 4+58 LT
STA 6+50 TO STA 7+50 LT
STA 5+75 TO STA 7+80 RT

NOTE: CONSTRUCT STONE LINED DITCH
STA 4+25 TO STA 4+58 LT (0.62 TON/LIN FT)
20 TON STONE LINED DITCH ALLOWED IN PROPOSAL.
SEE STONE LINED DITCH DETAIL.

STONE LINED DITCH DESIGN

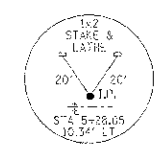
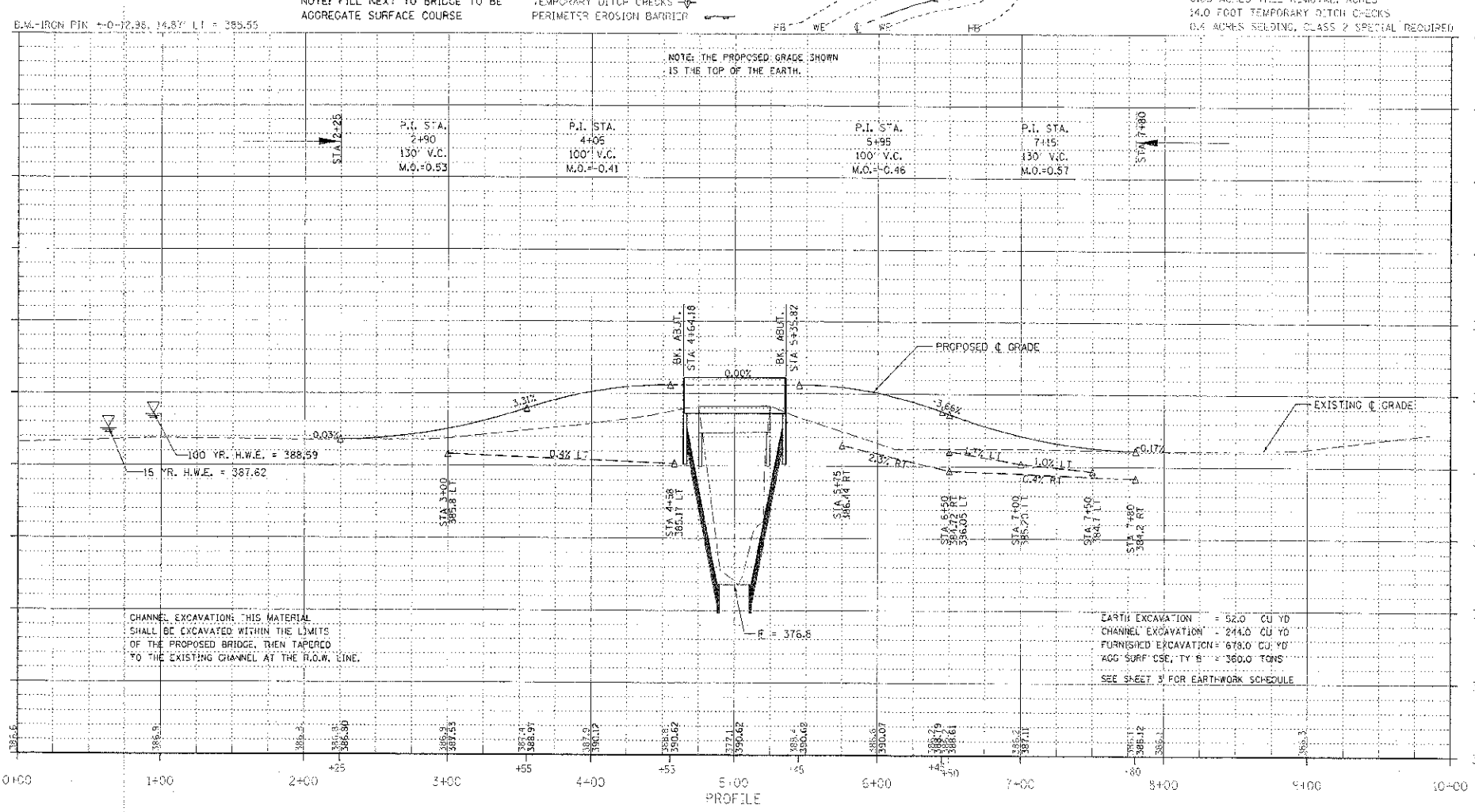
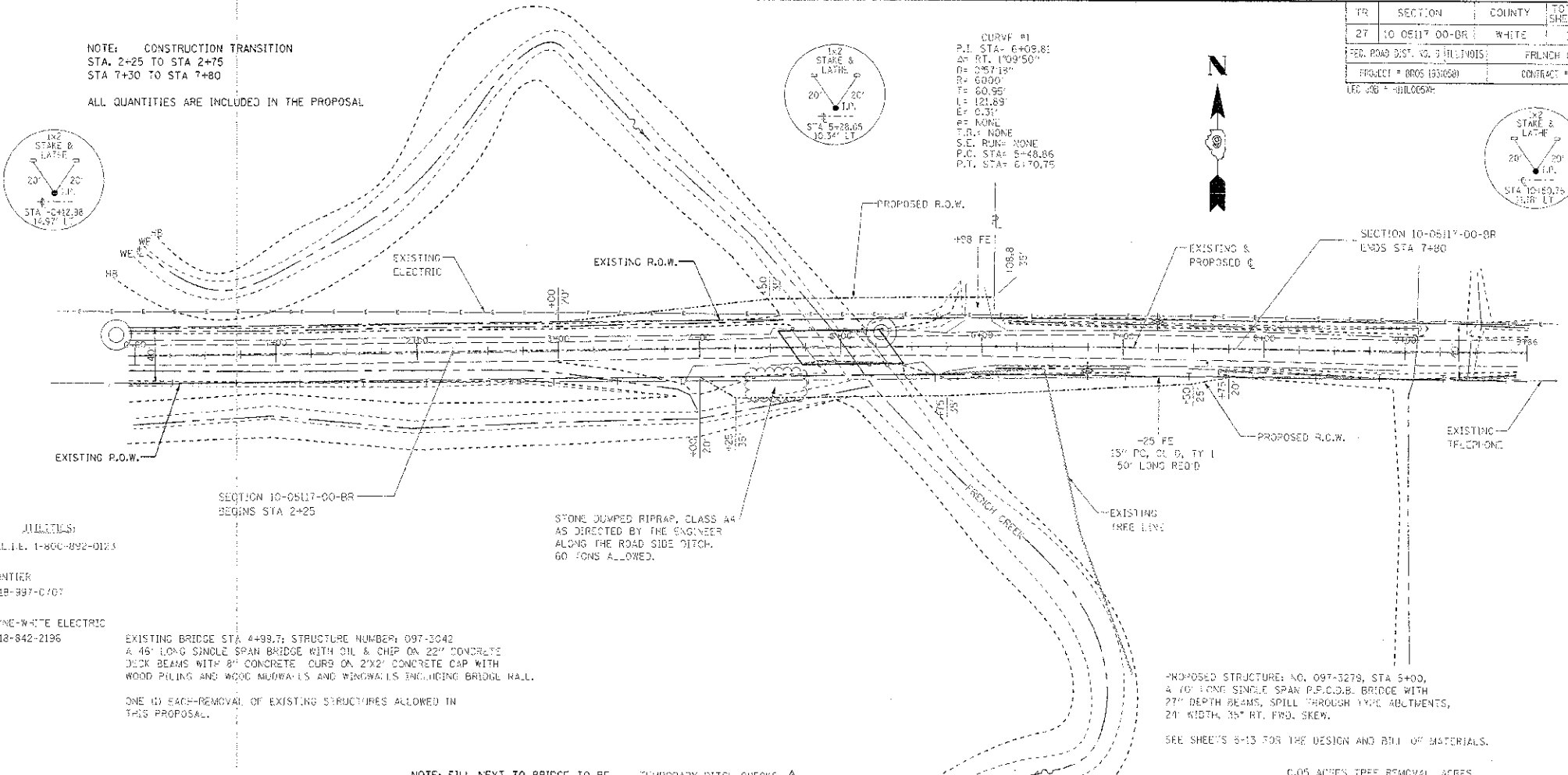


NOTE:
BOTTOM OF DITCH

SLOPE	2:1	3:1
2 FT	x= 5 FT	6 FT
1 FT	x= 2 FT	2 FT
2 1/2 FT	x= 1 FT	1 FT
	0.40	0.48

TON/LIN. FT

NOTE: FOR PLACEMENT, QUALITY GRADATION AND OTHER MISCELLANEOUS REQUIREMENTS FOR STONE LINED DITCH-SEE SPECIAL PROVISIONS.



CURVE #1
P.I. STA- 6+08.81
Δθ RT. 1°09'50"
R= 257.13'
L= 60.95'
E= 121.89'
E= 0.31'
PT. STA- 6+10.75

