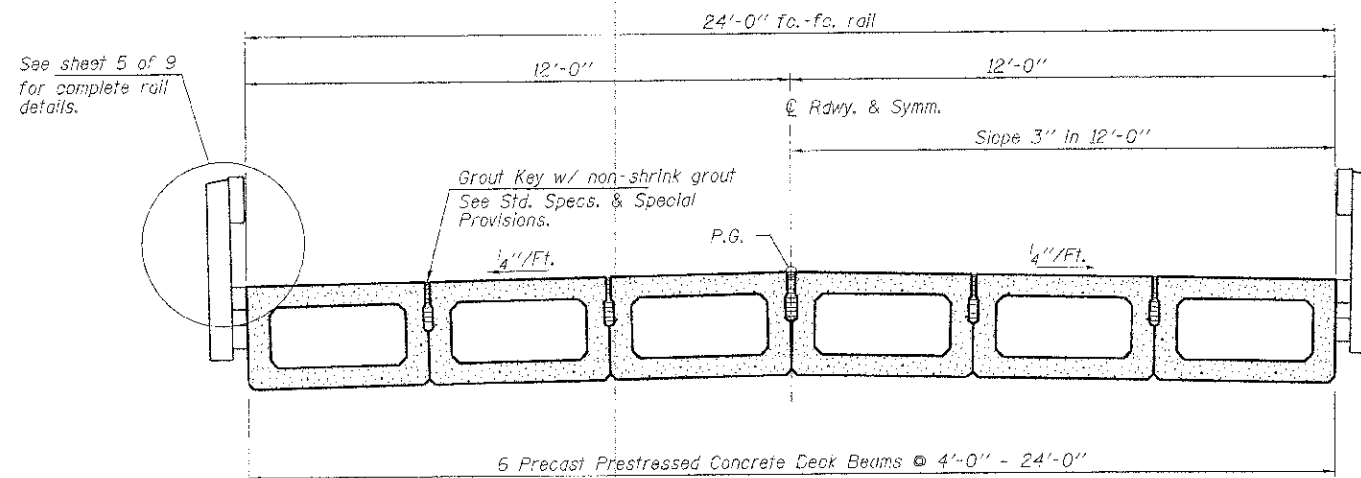
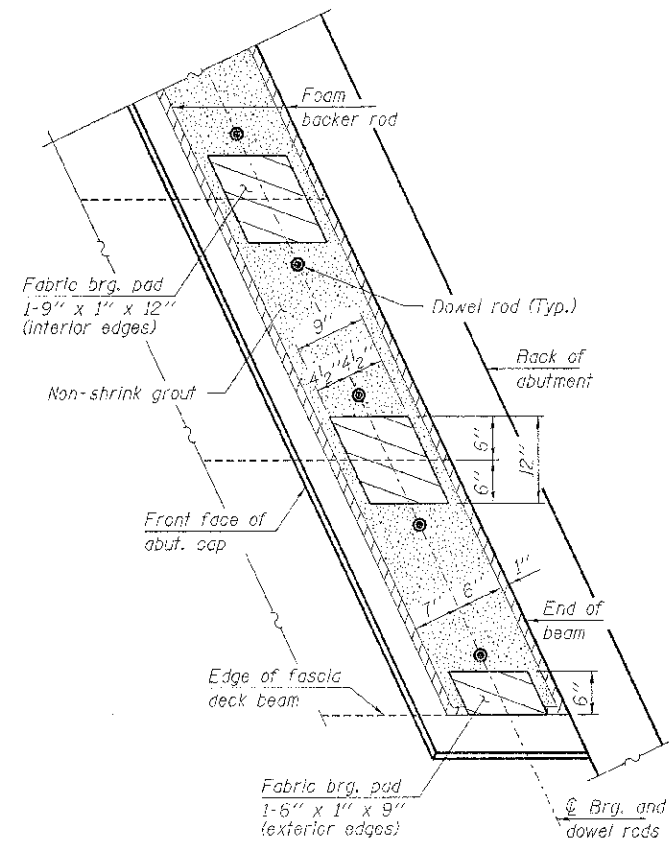


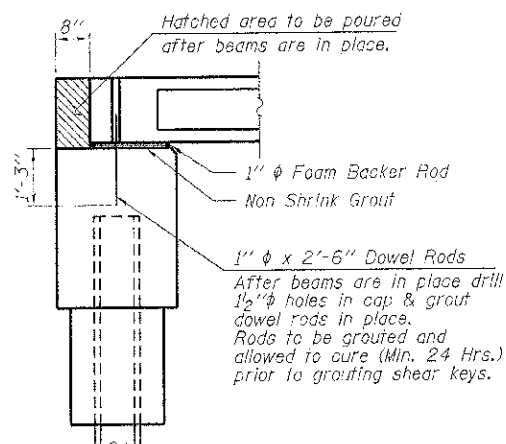
ELEVATION
Showing Rail Post Spacing
See sheet 5 of 9 for Railing Details.



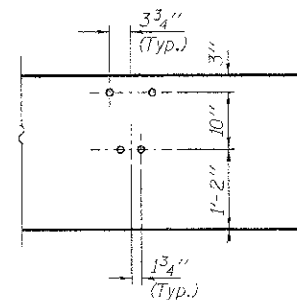
CROSS SECTION
See sheets 2 & 3 of 9 for Superstructure.



PLAN
(Abutment)



SECTION AT ABUTMENTS
@ Rt. L's



DETAIL A

Notes:
The bearing seat surfaces shall be adjusted by shimming the bearing to assure firm and even bearing prior to placement of grout. 2-1/8" fabric adjusting shims of the dimensions of the exterior bearing pad shown shall be provided for each bearing.

FILE NAME = 118672-shr-bridge.dgn	USER NAME =	DESIGNED = A.S.L.	REVISED =	STATE OF ILLINOIS WHITE COUNTY HIGHWAY DEPARTMENT	SUPERSTRUCTURE DETAILS STRUCTURE NO. 097-3279	T.R.	SECTION	COUNTY	TOTAL SHEETS	SHEET NO.
HAMPTON, LENZINI AND RENWICK, INC. 365 STEVENSON DRIVE SUITE 201 SPRINGFIELD, ILLINOIS 62760	PLAT SCALE =	CHECKED = S.W.M.	REVISED =			27	10-05117-00-BR	WHITE	13	8
ILLINOIS PROFESSIONAL DESIGNERS 1517 E. 11TH ST. SUITE 200 SPRINGFIELD, ILLINOIS 62760	PILOT DATE = 10/2/2012	DRAWN = D.A.B.	REVISED =			GRAY ROAD DISTRICT				CONTRACT NO. 99484
		CHECKED = S.W.M.	REVISED =							ILLINOIS FED. AID PROJECT BR05-193-0531
					SHEET NO. 4 OF 9 SHEETS					