

CODE NO.	ITEM	UNIT	TOTAL QUANTITY	CONSTRUCTION CODE			
				80% FED 20% STATE			
				NHPP		STP	
				ROADWAY 0059 URBAN		ROADWAY 0059 URBAN	
70300924	PAVEMENT MARKING TAPE, TYPE IV 24"	FOOT	87			87	
70400100	TEMPORARY CONCRETE BARRIER	FOOT	1662.5	1175		487.5	
70400200	RELOCATE TEMPORARY CONCRETE BARRIER	FOOT	1587.5	1100		487.5	
70600251	IMPACT ATTENUATORS, TEMPORARY (NON-REDIRECTIVE, NARROW), TEST LEVEL 3	EACH	4	2		2	
70600260	IMPACT ATTENUATORS, TEMPORARY (FULLY-REDIRECTIVE, NARROW), TEST LEVEL 3	EACH	4	2		2	
70600332	IMPACT ATTENUATORS, RELOCATE (FULLY-REDIRECTIVE, NARROW), TEST LEVEL 3	EACH	4	2		2	
70600352	IMPACT ATTENUATORS, RELOCATE (NON-REDIRECTIVE, NARROW), TEST LEVEL 3	EACH	4	2		2	
* 78000200	THERMOPLASTIC PAVEMENT MARKING - LINE 4"	FOOT	7023	4586		2437	
* 78000500	THERMOPLASTIC PAVEMENT MARKING - LINE 8"	FOOT	3023	3023			
* 78000600	THERMOPLASTIC PAVEMENT MARKING - LINE 12"	FOOT	255	255			
* 78009004	MODIFIED URETHANE PAVEMENT MARKING - LINE 4"	FOOT	1248	600		648	
* 78100100	RAISED REFLECTIVE PAVEMENT MARKER	EACH	16	16			
78100200	TEMPORARY RAISED REFLECTIVE PAVEMENT MARKER	EACH	264	264			
* 78200006	GUARDRAIL REFLECTORS, TYPE B	EACH	6	4		2	
* 78200011	BARRIER WALL REFLECTORS, TYPE C	EACH	137	96		41	
* 89000050	TEMPORARY BRIDGE TRAFFIC SIGNAL INSTALLATION	EACH	1			1	
X0100018	TREE REMOVAL (UNDER 6 UNITS DIAMETER)	UNIT	5	5			



* SPECIALTY ITEM
** 0042

△ REV. 2-25-2019

REV. - MS

MODEL: D:\p11710-746 DOT District 11\10_10_IL389\Salt Creek\Sheets\162H04-SHT04-50028.dgn



USER NAME = Ken.drabant	DESIGNED - KJD	REVISED -
	DRAWN - KJD	REVISED -
PLOT SCALE = 40.0000' / in.	CHECKED - RTB	REVISED -
PLOT DATE = 12/13/2018	DATE - 12/07/2018	REVISED -

**STATE OF ILLINOIS
DEPARTMENT OF TRANSPORTATION**

SUMMARY OF QUANTITIES			
IL 38 (ROOSEVELT RD) OVER SALT CREEK			
SCALE: 40.0000' / in.	SHEET 4	OF 6 SHEETS	STA. TO STA.

F.A.P. RTE.	F.A.U. RTE.	SECTION	COUNTY	TOTAL SHEETS	SHEET NO.
347	550	2018-044-BD&BJR	DUPAGE	74	6
					CONTRACT NO. 62H04
ILLINOIS FED. AID PROJECT					

CODE NO.	ITEM	UNIT	TOTAL QUANTITY	CONSTRUCTION CODE			
				80% FED 20% STATE			
				NHPP		STP	
				ROADWAY 0059 URBAN		ROADWAY 0059 URBAN	
* X0326276	TEMPORARY LIGHTING FOR SINGLE LANE STAGING	L SUM	1			1	
X0326766	CLEAN & RESEAL RELIEF JOINT	FOOT	170	170			
X0327980	PAVEMENT MARKING REMOVAL - WATER BLASTING	SQ FT	5796	4931		865	
* X2700003	GROOVING FOR RECESSED PAVEMENT MARKING 8"	FOOT	1377	1377			
* X2700004	PREFORMED PLASTIC PAVEMENT MARKING, TYPE B - LINE 7"	FOOT	1377	1377			
X4402020	CONCRETE MEDIAN SURFACE REMOVAL	SQ FT	301	301			
X7010216	TRAFFIC CONTROL AND PROTECTION, (SPECIAL)	L SUM	1	0.87		0.13	
X7030005	TEMPORARY PAVEMENT MARKING REMOVAL	SQ FT	7921	6757		1164	
X7040125	PINNING TEMPORARY CONCRETE BARRIER	EACH	597	441		156	
X7830050	RAISED REFLECTIVE PAVEMENT MARKER, REFLECTOR REMOVAL	EACH	218	218			
Z0001800	APPROACH SLAB REPAIR (PARTIAL DEPTH)	SQ YD	6.3	2.3		4	
Z0001899	JACK AND REMOVE EXISTING BEARINGS	EACH	32	32			
Z0001903	STRUCTURAL STEEL REMOVAL	POUND	6660	6660			
Z0001905	STRUCTURAL STEEL REPAIR	POUND	1800	1800			



* SPECIALTY ITEM
** 0042

△ REV. 2-19-2019

REV. - MS

MODEL: D:\p11710-746 IDOT District 1\NO. 10 IL388\Salt Creek\Sheets\162H04-SHT05-5003.dgn

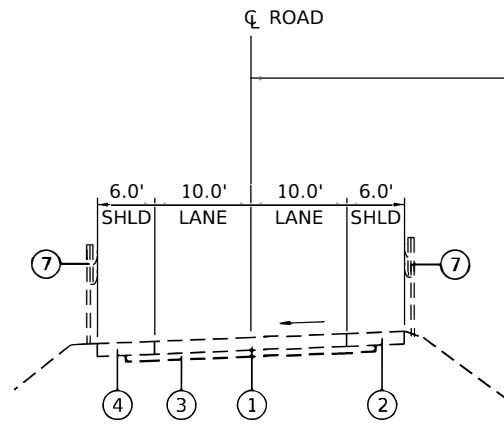


USER NAME = Ken.drabant	DESIGNED - KJD	REVISED -
	DRAWN - KJD	REVISED -
PLOT SCALE = 40.0000' / in.	CHECKED - RTB	REVISED -
PLOT DATE = 12/13/2018	DATE - 12/07/2018	REVISED -

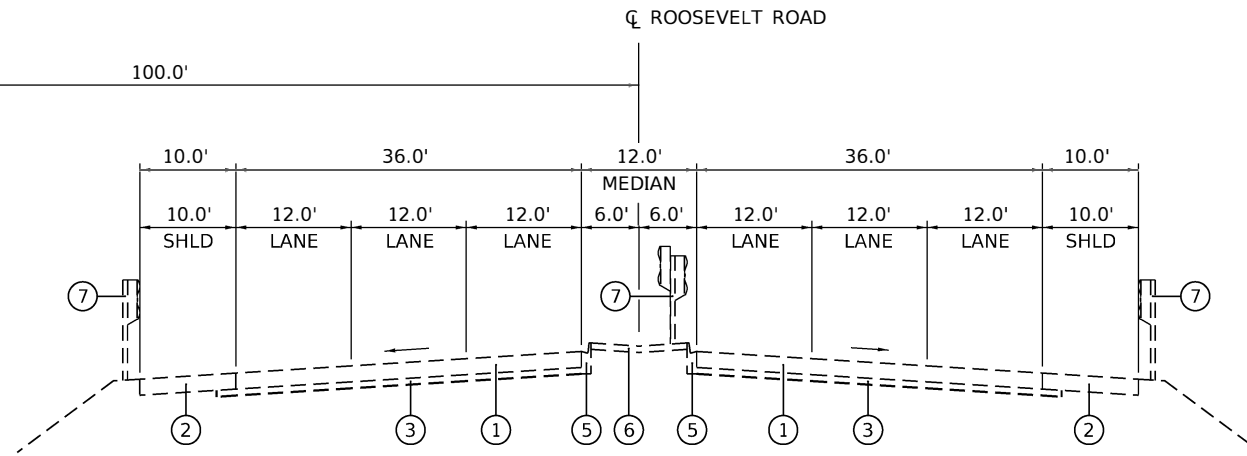
**STATE OF ILLINOIS
DEPARTMENT OF TRANSPORTATION**

SUMMARY OF QUANTITIES			
IL 38 (ROOSEVELT RD) OVER SALT CREEK			
SCALE: 40.0000' / in	SHEET 5	OF 6 SHEETS	STA. TO STA.

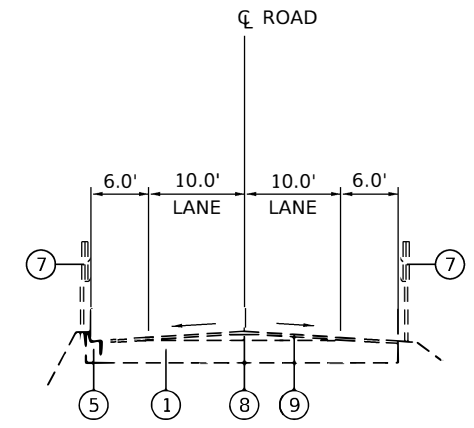
F.A.P. RTE.	F.A.U. RTE.	SECTION	COUNTY	TOTAL SHEETS	SHEET NO.
347	550	2018-044-BD&BJR	DUPAGE	74	7
					CONTRACT NO. 62H04
(ILLINOIS) FED. AID PROJECT					



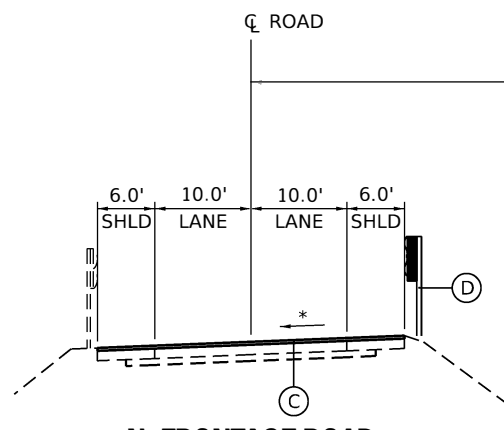
**N. FRONTAGE ROAD
(BRUSH HILL ROAD)
WEST APPROACH
EXISTING TYPICAL SECTION**
(STA. 155+35.38 TO STA. 155+90.38)



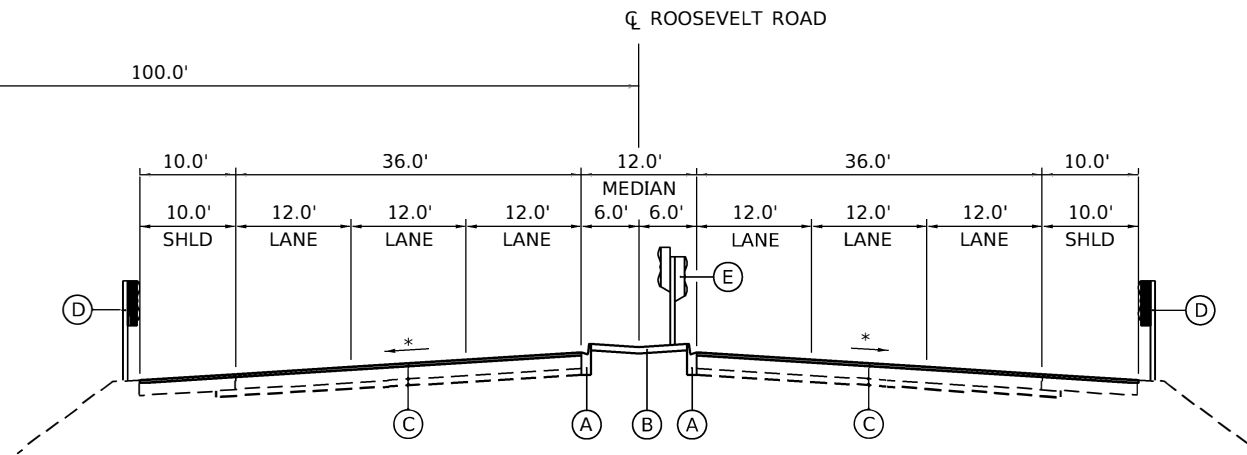
**ROOSEVELT ROAD - MAINLINE
EXISTING TYPICAL SECTION**
(STA. 154+71.68 TO STA. 155+94.62)
(STA. 156+80.98 TO STA. 158+03.32)



**N. FRONTAGE ROAD
(BRUSH HILL ROAD)
EAST APPROACH
EXISTING TYPICAL SECTION**
(STA. 157+52.42 TO STA. 158+07.42)

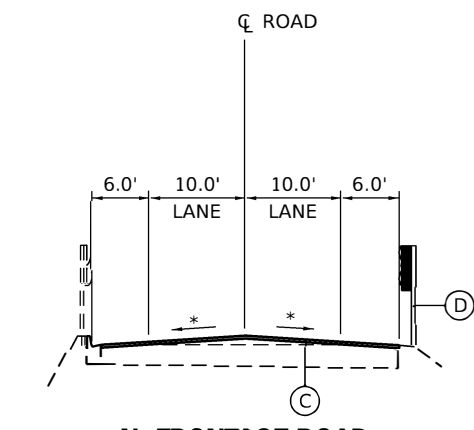


**N. FRONTAGE ROAD
(BRUSH HILL ROAD)
WEST APPROACH
PROPOSED TYPICAL SECTION**
(STA. 155+35.38 TO STA. 155+90.38)



**ROOSEVELT ROAD - MAINLINE
PROPOSED TYPICAL SECTION**
(STA. 154+71.68 TO STA. 155+94.62)
(STA. 156+80.98 TO STA. 158+03.32)

* MATCH EXISTING SLOPE



**N. FRONTAGE ROAD
(BRUSH HILL ROAD)
EAST APPROACH
PROPOSED TYPICAL SECTION**
(STA. 157+52.42 TO STA. 158+07.42)

HMA MIXTURE TABLE

PAY ITEM DESCRIPTION	MIX TYPE	% AIR VOIDS @ Ndes	QMP DESIGNATION
APPROACH RESURFACING	HOT-MIX ASPHALT SURFACE COURSE, MIX D, N70 (IL-9.5mm); 1 3/4"	4%@70 GYR	QC/QA

QMP DESIGNATION: QUALITY CONTROL/QUALITY ASSURANCE (QC/QA); QUALITY CONTROL FOR PERFORMANCE (QCP)

QUALITY MANAGEMENT PROGRAM (QMP) IDENTIFIES THE PARTICULAR QUALITY CONTROL SPECIFICATION THAT APPLIES TO THE HMA MIXTURE.

THE UNIT WEIGHT USED TO CALCULATE ALL HMA SURFACE MIX QUANTITIES IS 112 LBS/SQYD/IN. THE AC TYPE FOR POLYMERIZED HMA MIXTURES SHALL BE "SBS/SBR PG 76-22" AND FOR NON-POLYMERIZED HMA THE "AC TYPE" SHALL BE "PG 64-22" UNLESS MODIFIED BY DISTRICT ONE SPECIAL PROVISIONS.

FOR USE OF RECYCLE MATERIALS SEE DISTRICT ONE SPECIAL PROVISIONS.

EXISTING LEGEND

- ① EXIST. CONCRETE PAVEMENT
- ② EXIST. BITUMINOUS SHOULDER
- ③ EXIST. STABILIZED SUB-BASE
- ④ EXIST. STABILIZED SHOULDERS
- ⑤ EXIST. CONCRETE CURB AND GUTTER
- ⑥ EXIST. CONCRETE MEDIAN SURFACE
- ⑦ EXIST. GUARDRAIL
- ⑧ EXIST. BITUMINOUS RESURFACING
- ⑨ EXIST. CONCRETE SURFACE COURSE

PROPOSED LEGEND

- (A) COMBINATION CURB AND GUTTER REMOVAL AND REPLACEMENT
- (B) CONCRETE MEDIAN SURFACE, 4 INCH
- (C) HOT-MIX ASPHALT SURFACE COURSE, MIX "D", N70 - 1 3/4"
- (D) TRAFFIC BARRIER TERMINAL
- (E) REMOVE AND RE-ERECT GUARDRAIL



△ REV. 2-25-2019

MODEL: Default; FILE NAME: P11710-746 DDT District 11WO 10 IL38@Salt CreekSheetsD162H04-SHT06-Typ.dgn



USER NAME = Ken.drabant	DESIGNED - KJD	REVISED - KJD
	DRAWN - KJD	REVISED -
PLOT SCALE = 20.0000' / in.	CHECKED - RTB	REVISED -
PLOT DATE = 2/25/2019	DATE - 12/07/2018	REVISED -

**STATE OF ILLINOIS
DEPARTMENT OF TRANSPORTATION**

**TYPICAL SECTIONS
IL 38 (ROOSEVELT RD) OVER SALT CREEK**

SCALE: 20.0000' / in SHEET 1 OF 1 SHEETS STA. TO STA.

F.A.P. RTE.	F.A.U. RTE.	SECTION	COUNTY	TOTAL SHEETS	SHEET NO.
347	550	2018-044-BD&BJR	DUPAGE	74	9

CONTRACT NO. 62H04
[ILLINOIS] FED. AID PROJECT

GENERAL NOTES:

- No field welding is permitted except as specified in the contract documents.
- Reinforcement bars designated (E) shall be epoxy coated.
- Prior to pouring the new concrete deck for expansion joints reconstruction and deck slab repairs, all heavy or loose rust, loose mill scale, and other loose or potentially detrimental foreign material shall be removed from the surfaces in contact with concrete. Tightly adhered paint may remain unless otherwise noted. Removal shall be accomplished by methods that will not damage the steel and the cost will be included in the pay item covering removal of the existing concrete.
- Plan dimensions and details relative to existing plans are subject to nominal construction variations. The Contractor shall field verify existing dimensions and details affecting new construction and make necessary approved adjustments prior to construction or ordering of materials. Such variations shall not be cause for additional compensation for a change in scope of the work, however, the Contractor will be paid for the quantity actually furnished at the unit price bid for the work.
- Joint openings shall be adjusted according to Article 520.04 of the Standard Specifications when the deck is poured at an ambient temperature other than 50° F.
- Fasteners shall be ASTM A325, Type 1 hot-dipped galvanized bolts. Holes shall be 1 3/16" dia. for 3/4" dia. bolts, and 1 5/16" dia. for 7/8" dia. bolts, unless otherwise noted.
- All Structural Steel shall conform to AASHTO M270 Grade 50 unless otherwise noted.
- Bars noted thus, 3x2-#5, indicates 3 lines of #5 bars with 2 lengths of bars per line.
- All exposed concrete edges shall have a 3/4"x45° chamfer, except where shown otherwise.
- Synthetic fibers shall be added to the Bridge Deck Latex Concrete Overlay. See Special Provisions.
- The existing structural steel coating contains lead. The Contractor shall take appropriate precautions to deal with the presence of lead on this project.
- Existing Structural Steel that will be in contact with new Structural Steel shall be cleaned and painted prior to erection as required by the Special Provision "Cleaning and Painting Contact Surface Areas of Existing Steel Structures".
- All new structural steel and bearing assembly shall be hot-dip galvanized. See Special Provisions for "Hot Dip Galvanizing For Structural Steel".
- During repair operations, the Contractor shall locate and protect all utilities or facilities in the vicinity of the work including, but not limited to, fiber optic and/or electrical conduits attached to the structure. This work shall be performed to the satisfaction of the Engineer and will not be paid for separately, but shall be included with the contract. It shall be the Contractor's responsibility to restore and replace any damaged utilities or facilities to the satisfaction of the Engineer at no cost to the Department.
- Debris shall be removed from the tops of pier caps, abutment caps and slopewalls. Quantities are estimated and actual locations will be determined in the field, at the time of construction, by the Engineer.

INDEX OF SHEETS

- | | |
|-------|---|
| S1-01 | General Plan and Elevation |
| S1-02 | General Notes, Index of Sheets and Total Bill of Material |
| S1-03 | Stage Construction (Sheet 1 of 2) |
| S1-04 | Stage Construction (Sheet 2 of 2) |
| S1-05 | Temporary Concrete Barrier for Stage Construction |
| S1-06 | Bridge Deck Repair Plan |
| S1-07 | West Abutment Joint Removal and Reconstruction (Sheet 1 of 2) |
| S1-08 | West Abutment Joint Removal and Reconstruction (Sheet 2 of 2) |
| S1-09 | East Abutment Joint Removal and Reconstruction (Sheet 1 of 2) |
| S1-10 | East Abutment Joint Removal and Reconstruction (Sheet 2 of 2) |
| S1-11 | Preformed Joint Strip Seal-Sidewalk (Sheet 1 of 3) |
| S1-12 | Preformed Joint Strip Seal-Sidewalk (Sheet 2 of 3) |
| S1-13 | Preformed Joint Strip Seal-Sidewalk (Sheet 3 of 3) |
| S1-14 | Framing Plan |
| S1-15 | Structural Steel Repair Details |
| S1-16 | Elastomeric Bearings Details |
| S1-17 | West Abutment Repairs |
| S1-18 | East Abutment Repairs |
| S1-19 | Slopewall Removal and Reconstruction |
| S1-20 | Bar Splicer Assembly and Mechanical Splicer Details |

SCOPE OF WORK

- Scarify 3/4" from the bridge deck slab.
- Perform partial depth repairs to approach pavement and bridge deck.
- Reconstruct bridge deck expansion joints at the East and West Abutments and install new preformed joint strip seals.
- Reseal relief joints.
- Apply a 2 1/2" bridge deck latex concrete overlay on bridge deck and 1 3/4" Hot-Mix Asphalt (HMA) Overlay on approach slab.
- Perform bridge deck grooving for the bridge deck.
- Apply protective coat on the reconstructed transverse expansion joint areas and reconstructed inside and top faces of the parapets.
- Partially remove and replace raised concrete median on the approach slabs (see Roadway Plans).
- Perform structural steel beam end repairs, and remove/replace end diaphragms, as shown on Sheets S1-14 and S1-15 .
- Remove and replace expansion bearings at the East and West Abutments with elastomeric bearings and steel extensions.
- Perform structural concrete repairs for the Abutments as noted on the plans.
- Remove debris from tops of pier caps, abutment caps and slopewalls.
- Clean all deck drains.
- Partially remove concrete slope wall and replace with stone riprap, Class A5 at east end.

TOTAL BILL OF MATERIAL

ITEM	UNIT	SUPER	SUB	TOTAL
STONE RIPRAP, CLASS A5	SQ YD	-	110	110
FILTER FABRIC	SQ YD	-	110	110
CONCRETE REMOVAL	CU YD	35.2	-	35.2
SLOPE WALL REMOVAL	SQ YD	-	75	75
CONCRETE STRUCTURES	CU YD	-	0.6	0.6
CONCRETE SUPERSTRUCTURE	CU YD	38.5	-	38.5
BRIDGE DECK GROOVING	SQ YD	1454	-	1454
PROTECTIVE COAT	SQ YD	96	-	96
FURNISHING AND ERECTING STRUCTURAL STEEL	POUND	12400	-	12400
REINFORCEMENT BARS, EPOXY COATED	POUND	5040	-	5040
BAR SPLICERS	EACH	52	-	52
PREFORMED JOINT STRIP SEAL	FOOT	250	-	250
ELASTOMERIC BEARING ASSEMBLY, TYPE I	EACH	32	-	32
ANCHOR BOLTS, 1"	EACH	64	-	64
CLEAN & RESEAL RELIEF JOINT	FOOT	170	-	170
APPROACH SLAB REPAIR (PARTIAL DEPTH)	SQ YD	2.3	-	2.3
JACK AND REMOVE EXISTING BEARINGS	EACH	32	-	32
STRUCTURAL STEEL REMOVAL	POUND	6660	-	6660
STRUCTURAL STEEL REPAIR	POUND	1800	-	1800
BRIDGE DECK LATEX CONCRETE OVERLAY, 2 1/2 INCHES	SQ YD	1519	-	1519
BRIDGE DECK SCARIFICATION 3/4"	SQ YD	1519	-	1519
STRUCTURAL REPAIR OF CONCRETE (DEPTH EQUAL TO OR LESS THAN 5 INCHES)	SQ FT	-	98	98
DEBRIS REMOVAL	CU YD	3	-	3

△ REV. 2-19-2019

MODEL: Default
FILE NAME: P:\1710-746 IDOT District 1\WO 10 IL38@Salt Creek\Sheets\02200220026-62H04-002-GenNotes.dgn
2/19/2019 11:53:58 AM

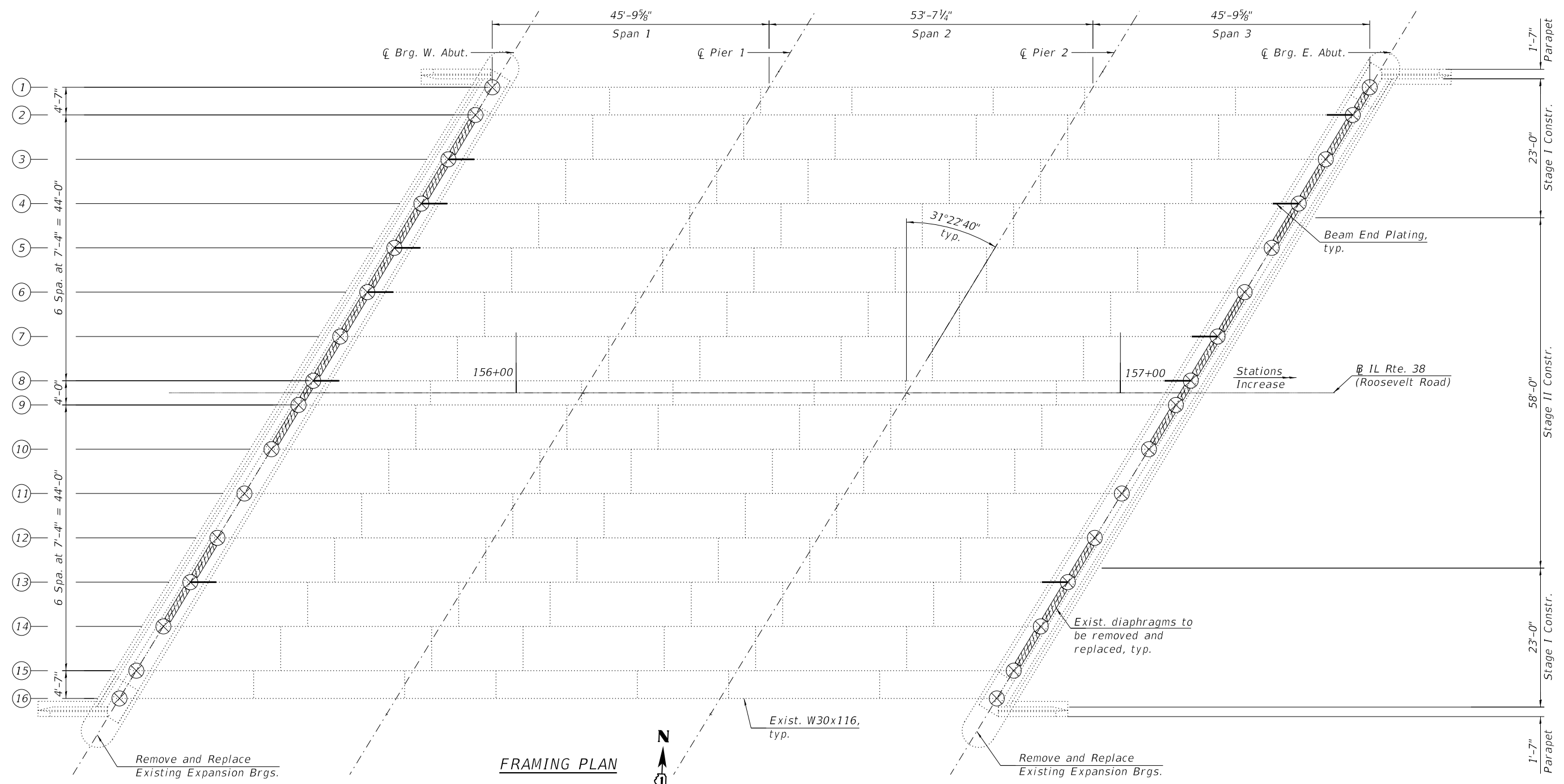


USER NAME =	DESIGNED - MAA	REVISED - 02/19/2019 SK
CHECKED - MI, MAI	REVISIONS -	
PLOT SCALE =	DRAWN - MAA	REVISED -
PLOT DATE =	DATE - 01/09/2019	REVISED -

**STATE OF ILLINOIS
DEPARTMENT OF TRANSPORTATION**

GENERAL NOTES, INDEX OF SHEETS AND TOTAL BILL OF MATERIAL
STRUCTURE NO. 022-0026
SHEET S1-02 OF S1-20 SHEETS

F.A.P. RTE.	F.A.U. RTE.	SECTION	COUNTY	TOTAL SHEETS	SHEET NO.
347	550	2018-044-BD&BJR	DU PAGE	74	34
				CONTRACT NO. 62H04	
		ILLINOIS FED. AID PROJECT			



NOTES:

1. All work is to be performed utilizing staged construction. See Sheets S1-03 and S1-04 for details.
2. For Beam End Repairs and Diaphragm Removal and Replacement Details, see Sheet S1-15.
3. For Existing Expansion Bearings Removal and Replacement, see Sheet S1-16.
4. Jacking and Removing Existing Bearings shall be performed after scarification is completed and before the new deck overlay is poured.
5. The new bearings shall be in place, and the jacks shall be lowered, before the new deck overlay is poured.

6.

INTERIOR GIRDER REACTION TABLE		
	ABUTMENT	PIER
R _D (k)	17.5	54.9
R _E (k)	36.2	44.6
Imp (k)	10.6	12.8
R _{TOTAL} (k)	64.3	112.3

LEGEND:

- Perform Beam End Plating
- Remove and Replace Existing Diaphragm
- ⊗ Jack and Remove Existing Bearings

REV. 2-19-2019

MODEL: Default
FILE NAME: P:\1710-746 IDOT District 1\WO 10 IL38@Salt Creek\Sheets\0220026-62\H04-015-FramingPlan.dgn



USER NAME =	DESIGNED - JJS	REVISED - 02/19/2019 SK
	CHECKED - MI, MAI	REVISED -
PLOT SCALE =	DRAWN - MAA	REVISED -
PLOT DATE =	DATE - 01/09/2019	REVISED -

**STATE OF ILLINOIS
DEPARTMENT OF TRANSPORTATION**

**FRAMING PLAN
STRUCTURE NO. 022-0026**

SHEET S1-14 OF S1-20 SHEETS

F.A.P. RTE.	F.A.U. RTE.	SECTION	COUNTY	TOTAL SHEETS	SHEET NO.
347	550	2018-044-BD&BJR	DU PAGE	74	46
CONTRACT NO. 62H04					
ILLINOIS FED. AID PROJECT					

