

033

03-08-2019 LETTING ITEM 033

STATE OF ILLINOIS
DEPARTMENT OF TRANSPORTATION

F.A.I. RTE	SECTION	COUNTY	TOTAL SHEETS	SHEET NO.
80	2018-112-1	WILL	13	1
		KUNZ'S	CONTRACT NO. 62H35	

13 + 2 = 15 TOTAL SHEETS

D-91-040-19

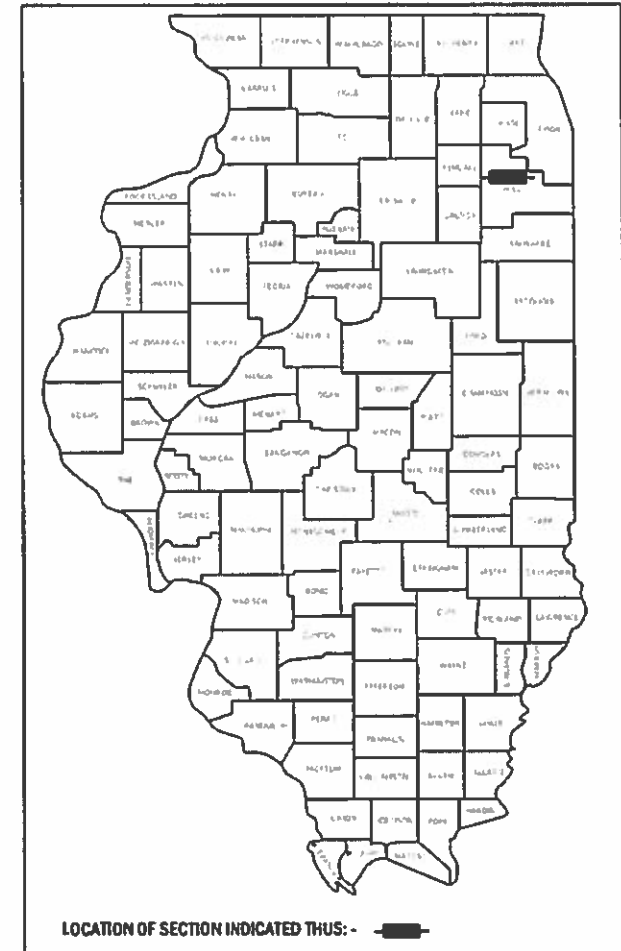
FOR INDEX OF SHEETS, SEE SHEET NO. 2

PROJECT IS LOCATED IN THE
CITY OF JOLIET

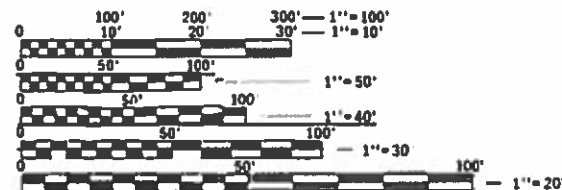
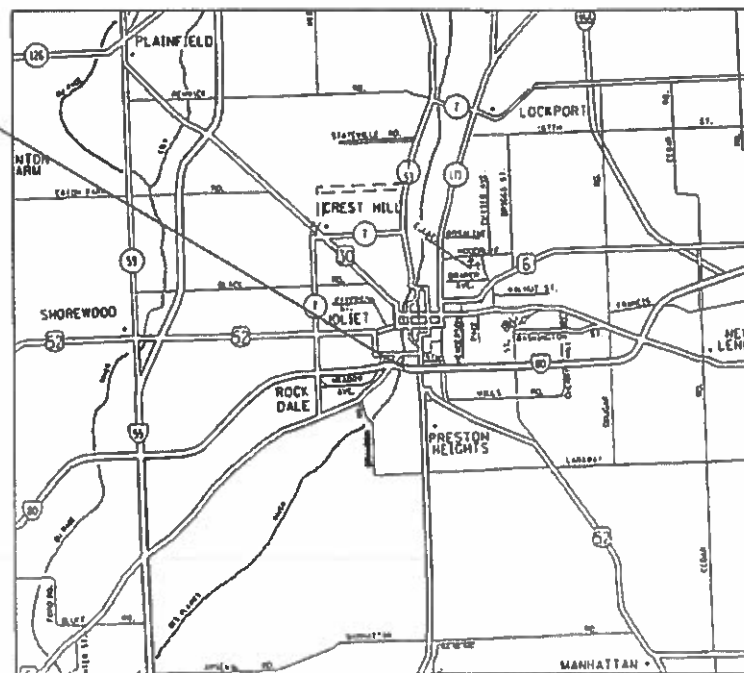
TRAFFIC DATA:

INTERSTATE RTE 80:
2017 ADT = 85,400
SPEED LIMIT = 55 MPH

**PROPOSED
HIGHWAY PLANS**
FAI ROUTE 80 : INTERSTATE ROUTE 80
OVER DES PLAINES RIVER
SECTION: 2018-112-1
PROJECT NHPP-NPFR(074)
MISCELLANEOUS (PIER PROTECTION CELL)
WILL COUNTY
C-91-239-19



PROJECT LOCATION
I-80 OVER DES PLAINES RIVER
SN: 099-0056



FULL SIZE PLANS HAVE BEEN PREPARED USING STANDARD
ENGINEERING SCALES. REDUCED SIZED PLANS WILL NOT
CONFORM TO STANDARD SCALES. IN MAKING MEASUREMENTS
ON REDUCED PLANS, THE ABOVE SCALES MAY BE USED.

J.U.L.I.E.
JOINT UTILITY LOCATION INFORMATION FOR EXCAVATION
1-800-892-0123
OR 811

PROJECT ENGINEER JEAN A. MIDY (847)221-3056
PROJECT MANAGER FAWAD AQUEEL (847)705-4247

JOLIET TOWNSHIP

GROSS LENGTH = 2,385 FT. = 0.452 MILE
NET LENGTH = 470 FT. = 0.089 MILE

STATE OF ILLINOIS
DEPARTMENT OF TRANSPORTATION

SUBMITTED ~~March 30 2018~~
Anthony A. Wrayley/ASB
Feb 9 2019 REGIONAL ENGINEER

Feb 19 2019
Paul P. Ch...
ENGINEER OF DESIGN AND ENVIRONMENT
DIRECTOR OF HIGHWAYS PROJECT IMPLEMENTATION

PRINTED BY THE AUTHORITY
OF THE STATE OF ILLINOIS

INDEX OF SHEETS

SHEET NO.	DESCRIPTION
1.	TITLE SHEET
2.	INDEX OF SHEETS, HIGHWAY STANDARDS, AND GENERAL NOTES
3.	SUMMARY OF QUANTITIES
4.	ROADWAY PLAN
5.	STRUCTURAL PLANS
9.	TRAFFIC CONTROL AND PROTECTION FOR SIDE ROADS, INTERSECTIONS, AND DRIVEWAYS (TC-10)
10.	TRAFFIC CONTROL DETAILS FOR FREEWAY SHOULDER CLOSURES AND PARTIAL RAMP CLOSURES (TC-17)
11.	FREEWAY/EXPRESSWAY SIGNING FOR FLAGGING OPERATIONS AT WORK ZONE OPENINGS ON FREEWAYS/EXPRESSWAYS (TC-18)
12.	ARTERIAL ROAD INFORMATION SIGNING (TC-22)
13.	DRIVEWAY ENTRANCE SIGNING (TC-26)

STATE HIGHWAY STANDARDS

STANDARD NO.	DESCRIPTION
000001-07	STANDARD SYMBOLS, ABBREVIATIONS AND PATTERNS
701401-12	LANE CLOSURE, FREEWAY/EXPRESSWAY
701428-01	TRAFFIC CONTROL SETUP AND REMOVAL FREEWAY/EXPRESSWAY
701501-06	URBAN LANE CLOSURE, 2L, 2W, UNDIVIDED
701606-10	URBAN SINGLE LANE CLOSURE, MULTILANE, 2W WITH MOUNTABLE MEDIAN
701901-08	TRAFFIC CONTROL DEVICES
701400-09	APPROACH TO LANE CLOSURE, FREEWAY/EXPRESSWAY

GENERAL NOTES

- BEFORE STARTING ANY EXCAVATION, THE CONTRACTOR SHALL CALL "J.U.L.I.E." AT (800) 892-0123 OR 811 FOR FIELD LOCATIONS OF BURIED ELECTRIC, TELEPHONE AND GAS UTILITIES. 48 HOUR NOTIFICATION IS REQUIRED.
- THE CONTRACTOR SHALL COORDINATE CONSTRUCTION ACTIVITIES WITH UTILITY COMPANIES, AND THE CITY OF JOLIET.
- THE CONTRACTOR WILL NOT BE ALLOWED TO SET UP A YARD OR FIELD OFFICE ON STATE PROPERTY WITHOUT WRITTEN PERMISSION FROM THE DEPARTMENT.
- ALL DAMAGE TO EXISTING PAVEMENT MARKINGS OR RAISED REFLECTIVE PAVEMENT MARKERS OUTSIDE THE REMOVAL LINE SHOWN ON THE PLANS SHALL BE REPLACED AT NO ADDITIONAL COST TO THE DEPARTMENT.
- IT SHALL BE THE CONTRACTOR'S RESPONSIBILITY TO VERIFY ALL DIMENSIONS AND CONDITIONS EXISTING IN THE FIELD PRIOR TO CONSTRUCTION AND ORDERING OF MATERIALS.
- BEFORE BEGINNING ANY WORK, THE CONTRACTOR SHALL RETAIN AND RECORD FOR FUTURE REFERENCE, ALL EXISTING PAVEMENT MARKING LINES (AND RAISED REFLECTIVE PAVEMENT MARKERS) IN ORDER THAT THESE LOCATIONS CAN BE RE-ESTABLISHED FOR STRIPING. EXACT LOCATIONS OF ALL PAVEMENT MARKINGS SHALL BE AS DIRECTED BY THE ENGINEER.
- THE CONTRACTOR SHALL CONTACT THE DISTRICT ONE TRAFFIC CONTROL SUPERVISOR AT (847) 705-4470 A MINIMUM OF 72 HOURS IN ADVANCE OF BEGINNING WORK.
- THE RESIDENT ENGINEER SHALL CONTACT DON CHIARUGI, ARTERIAL TRAFFIC FIELD ENGINEER VIA E-MAIL AT DON.CHIARUGI@ILLINOIS.GOV, A MINIMUM OF 2 WEEKS PRIOR TO PLACEMENT OF PERMANENT PAVEMENT MARKINGS.
- THE CONTRACTOR SHALL BE REQUIRED TO PROVIDE ACCESS TO ABUTTING PROPERTY AT ALL TIMES DURING THE CONSTRUCTION OF THIS PROJECT.
- DO NOT SCALE PLANS FOR CONSTRUCTION DIMENSIONS.
- THESE PLANS HAVE BEEN PREPARED FROM NOTES RECEIVED FROM DISTRICT 1 BRIDGE INSPECTORS.
- PRIOR TO BEGINNING CONSTRUCTION WORK, THE CONTRACTOR SHALL SUBMIT A WORK PLAN TO THE U.S. COAST GUARD FOR APPROVAL.
- IDOT EMC WILL PROVIDE THE NAVIGATION LIGHTING, CONDUIT AND WIRE. DURING CONSTRUCTION OF THE NEW PIER THE CONSTRUCTION CONTRACTOR MUST COORDINATE AND PROVIDE ACCESS AND EQUIPMENT FOR EMC CONTRACTOR TO INSTALL THE NAVIGATION LIGHTING AND ELECTRICAL EQUIPMENT.
- THE DEPARTMENT HAS NOT OBTAINED A 404 PERMIT. IF THE CONTRACTOR CHOOSES TO USE ACTIVITIES REQUIRING AN USACE 404 PERMIT IT IS THE CONTRACTOR'S RESPONSIBILITY TO SECURE THE PROPER USACE PERMITS.
- THE CONTRACTOR SHALL OBTAIN COAST GUARD APPROVAL FOR ANY WORK THAT MAY INTERFERE WITH NAVIGATIONAL OPERATIONS OF THE NAVIGABLE WATERS. A WORK PLAN SHALL BE PREPARED BY THE CONTRACTOR, REVIEWED AND APPROVED BY THE ENGINEER AND BE SUBMITTED BY THE ENGINEER TO THE COAST GUARD AT THE ADDRESS LISTED BELOW FOR APPROVAL.

BRIDGE ADMINISTRATOR
 US COAST GUARD
 NINTH COAST GUARD DISTRICT
 1240 E. NINTH ST
 CLEVELAND, OH 44199-2060

MODEL: Default
 FILE NAME: P:\1108\B&E\BID\NTEC\Illinois.gov\PWIDOT\Documents\BIDOT\Office\District 1\Projects\BID\04019\CADD\BDR\Design\BID\04019-ah-gemere.dgn

USER NAME = ledezmar	DESIGNED -	REVISED -	STATE OF ILLINOIS DEPARTMENT OF TRANSPORTATION	GARYS MILL RD OVER WEST BRANCH DUPAGE RIVER (SN 022-0162) GENERAL NOTES	F.A.U. RTE. = 3549	SECTION = 2018-052-BDR	COUNTY =	TOTAL SHEETS = 13	SHEET NO. = 2	
PLOT SCALE = 100.0000' / in.	CHECKED -	REVISED -			SCALE: 1" = 50'	SHEET 1	OF 1	SHEETS	STA.	TO STA.
PLOT DATE = 12/14/2018	DATE -	REVISED -			ILLINOIS FED. AID PROJECT					
CONTRACT NO. 62G93										

SUMMARY OF QUANTITIES			URBAN TOTAL QUANTITIES	CONSTRUCTION TYPE CODE				
CODE NO	ITEM	UNIT		NHPP 90% FED 10% ST 0048				
50200300	COFFERDAM EXCAVATION	CU YD	178	178				
50300265	SEAL COAT CONCRETE	CU YD	675	675				
50500405	FURNISHING AND ERECTING STRUCTURAL STEEL	POUND	500	500				
50500505	STUD SHEAR CONNECTORS	EACH	900	900				
50800105	REINFORCEMENT BARS	POUND	1860	1860				
52200015	PERMANENT SHEET PILING	SO FT	3430	3430				
67000400	ENGINEER'S FIELD OFFICE, TYPE A	CAL MO	3	3				
67100100	MOBILIZATION	L SUM	1	1				
70102620	TRAFFIC CONTROL AND PROTECTION, STANDARD 701501	L SUM	1	1				
70102625	TRAFFIC CONTROL AND PROTECTION, STANDARD 701606	L SUM	1	1				
70200100	NIGHTTIME WORK ZONE LIGHTING	L SUM	1	1				
X0326685	NAVIGATIONAL LIGHT	L SUM	1	1				
X7011015	TRAFFIC CONTROL AND PROTECTION (EXPRESSWAYS)	L SUM	1	1				
XZ039900	REMOVAL OF PIER PROTECTION CELL	L SUM	1	1				

SUMMARY OF QUANTITIES			URBAN TOTAL QUANTITIES	CONSTRUCTION TYPE CODE				
CODE NO	ITEM	UNIT		NHPP 90% FED 10% ST 0048				
Z0030850	TEMPORARY INFORMATION SIGNING	SO FT	1	1				
50300225	CONCRETE STRUCTURES	CU YD	159	159				
X0321809	PERMANENT GROUND ANCHORS	EA	24	24				

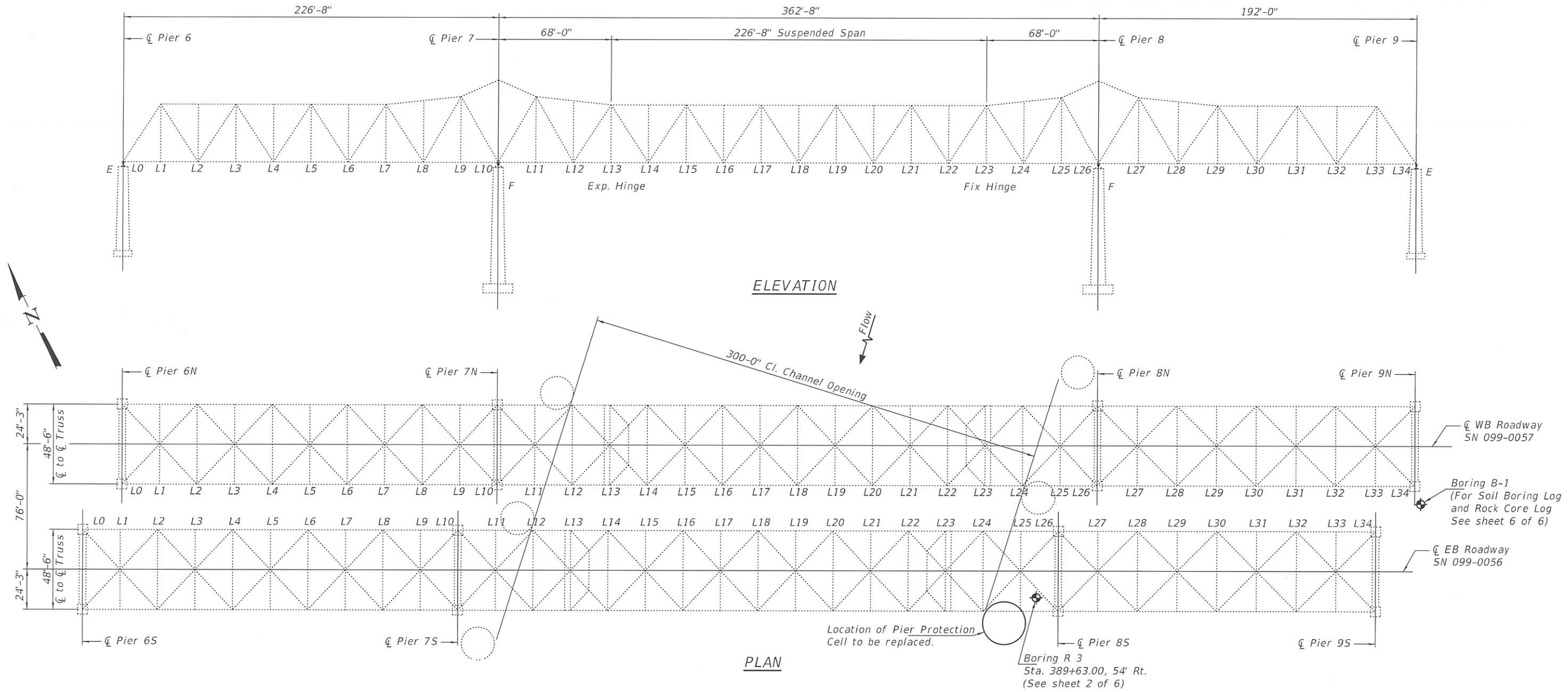
FILE NAME =	USER NAME = ledexnorm	DESIGNED -	REVISED -
pw:\NLOB\EBID\EG\Illinois.gov\FWIDOT\Documents\DOC\Offices\District\NProjects\DI0409\CADD\Design\DI0409\DRAWING		REVISION	REVISION
	PLOT SCALE = 100.0000' / 1" =	CHECKED -	REVISED -
	PLOT DATE = 12/14/2018	DATE -	REVISED -

**STATE OF ILLINOIS
DEPARTMENT OF TRANSPORTATION**

**I-80 OVER DES PLAINES RIVER
SUMMARY OF QUANTITIES**

SCALE: SHEET NO. OF SHEETS STA. TO STA.

F.A.I. RTE.	SECTION	COUNTY	TOTAL SHEETS	SHEET NO.
80	2018-112-1	WILL	13	3
CONTRACT NO. 62H35				
FED. ROAD DIST. NO. 1 (ILLINOIS) FED. AID PROJECT				



ELEVATION

PLAN

GENERAL NOTES

All structural steel shall conform to AASHTO Classification M-270 Gr. 36, unless otherwise noted.
 Plan dimensions and details relative to existing plans are subject to nominal construction variations. The Contractor shall field verify existing dimensions and details affecting new construction and make necessary approved adjustments prior to construction or ordering of materials. Such variations shall not be cause for additional compensation for a change in scope of the work, however, the Contractor will be paid for the quantity actually furnished at the unit price bid for the work.
 No dewatering of the cell shall be allowed until all lifts of seal coat are in place.

DESIGN SPECIFICATION

2017 AASHTO LRFD Design Specifications.
 2009 Guide Specifications for Vessel Collisions.

DESIGN LOADING

Lateral force on cell (P) = 3511k (Weight of Barges plus Boat)
 Point of application = 4.3' above normal pool.
 Design Velocity of Water = 10 ft./sec.

DESIGN STRESSES

f's = 20,000 lbs./lineal inch (Sheet Piling interlocking strength in tension)
 f'c = 3,500 p.s.i.
 f'c = 3,500 p.s.i. (Seal Coat Concrete)
 fy = 50,000 p.s.i. (Sheet Piling)
 fu = 150,000 p.s.i. (H.S. bars)
 fy = 36,000 p.s.i. (Structural Steel) M 270 Gr 36
 fy = 50,000 p.s.i. (Anchor Bearing Plate) M 270 Gr 50

TOTAL BILL OF MATERIAL

ITEM	UNIT	QUANTITY
Concrete Structures	Cu. Yd.	159
Reinforcement Bars	Pound	1860
Furnishing & Erecting Structural Steel	Pound	500
Seal Coat Concrete	Cu. Yd.	675
Permanent Steel Sheet Piling	Sq. Ft.	3430
Cofferdam Excavation	Cu. Yd.	178
Permanent Ground Anchors	Each	24
Stud Shear Connectors	Each	900
Removal of Pier Protection Cell	L. Sum	1
* Navigational Light	L. Sum	1

* IDOT Electrical Maintenance Contract (EMC) will provide the navigational lighting, conduit and wire. During construction of the new pier protection cell the contractor must coordinate and provide access and equipment for the EMC contractor to install the navigational lighting and electrical equipment. For location of navigational light, see sheet 2 of 6.



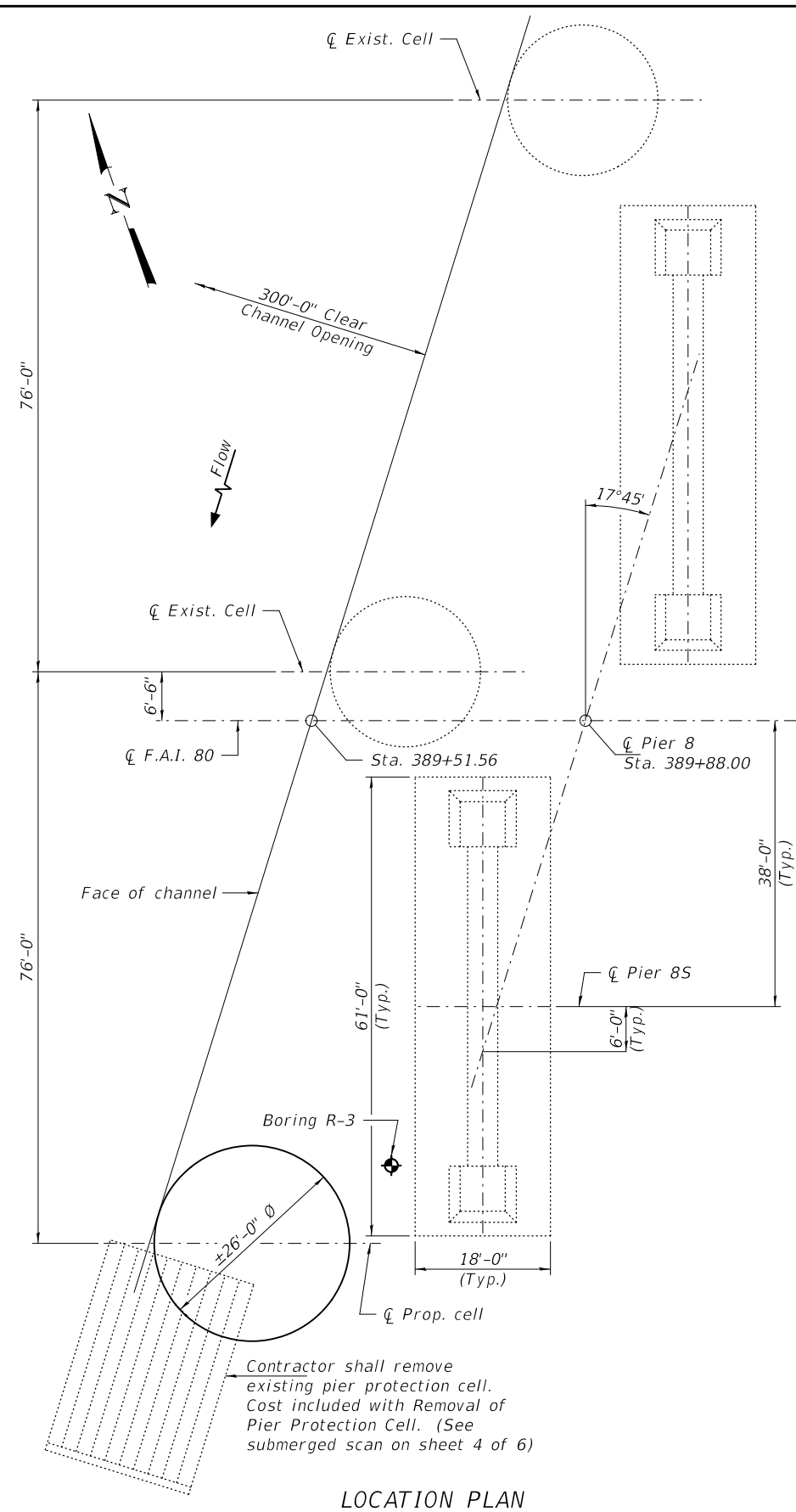
EXPIRES 11-30-2020

DESIGNED - Victor H. Veliz	EXAMINED - Tony A. [Signature]	DATE - JANUARY 30, 2019
CHECKED - [Signature]	PASSED - [Signature]	REVISED -
DRAWN - [Signature]	ENGINEER OF BRIDGES AND STRUCTURES	REVISED -
CHECKED - [Signature]		

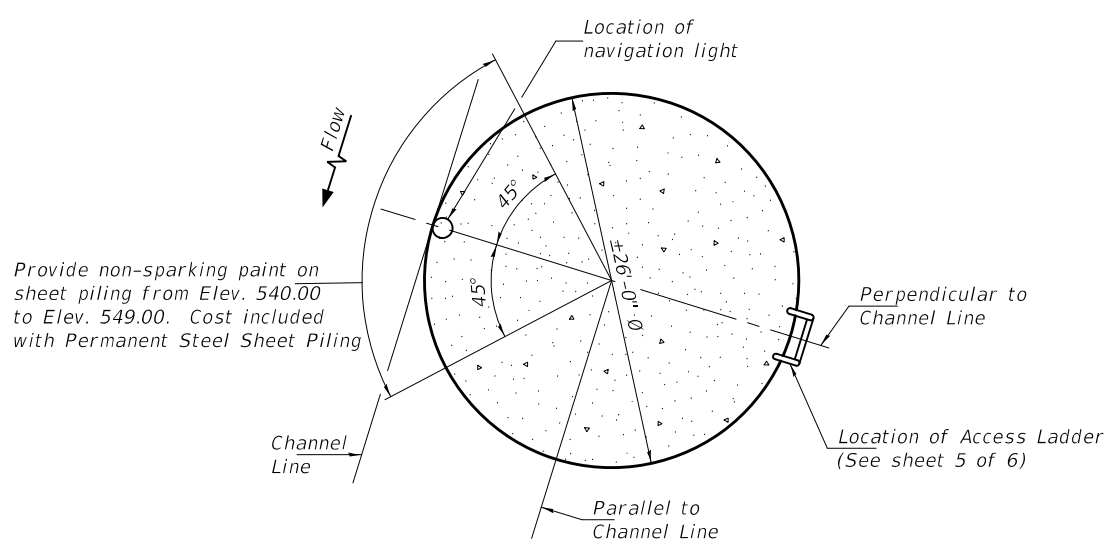
STATE OF ILLINOIS
 DEPARTMENT OF TRANSPORTATION

GENERAL PLAN AND ELEVATION
 FAI 80 OVER DES PLAINES RIVER
 SN 099-0056 (WB)
 SHEET NO. 1 OF 6 SHEETS

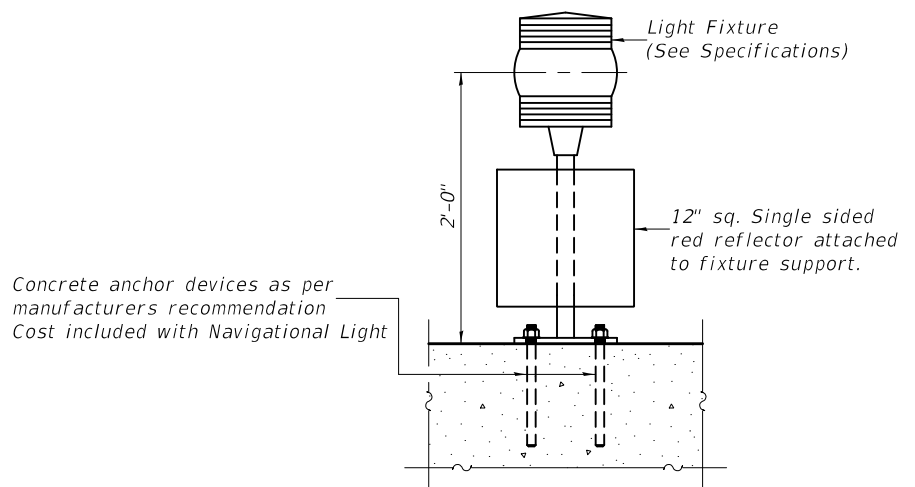
F.A.I. RTE.	SECTION	COUNTY	TOTAL SHEETS	SHEET NO.
80	2018-112-1	WILL	13	5
			CONTRACT NO. 62H35	
ILLINOIS FED. AID PROJECT				



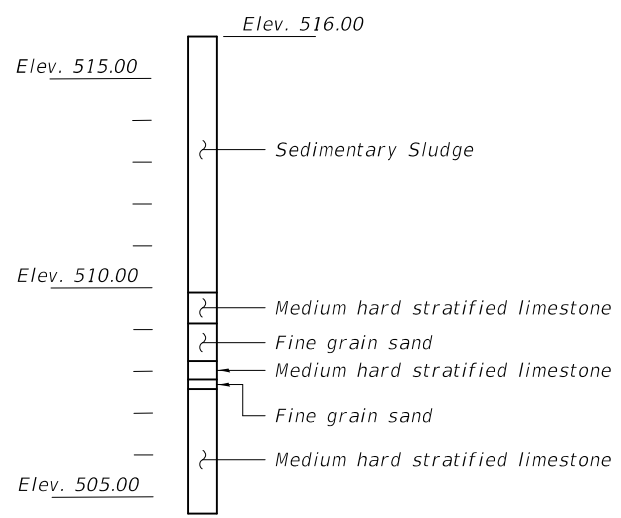
LOCATION PLAN



PIER PROTECTION CELL PLAN

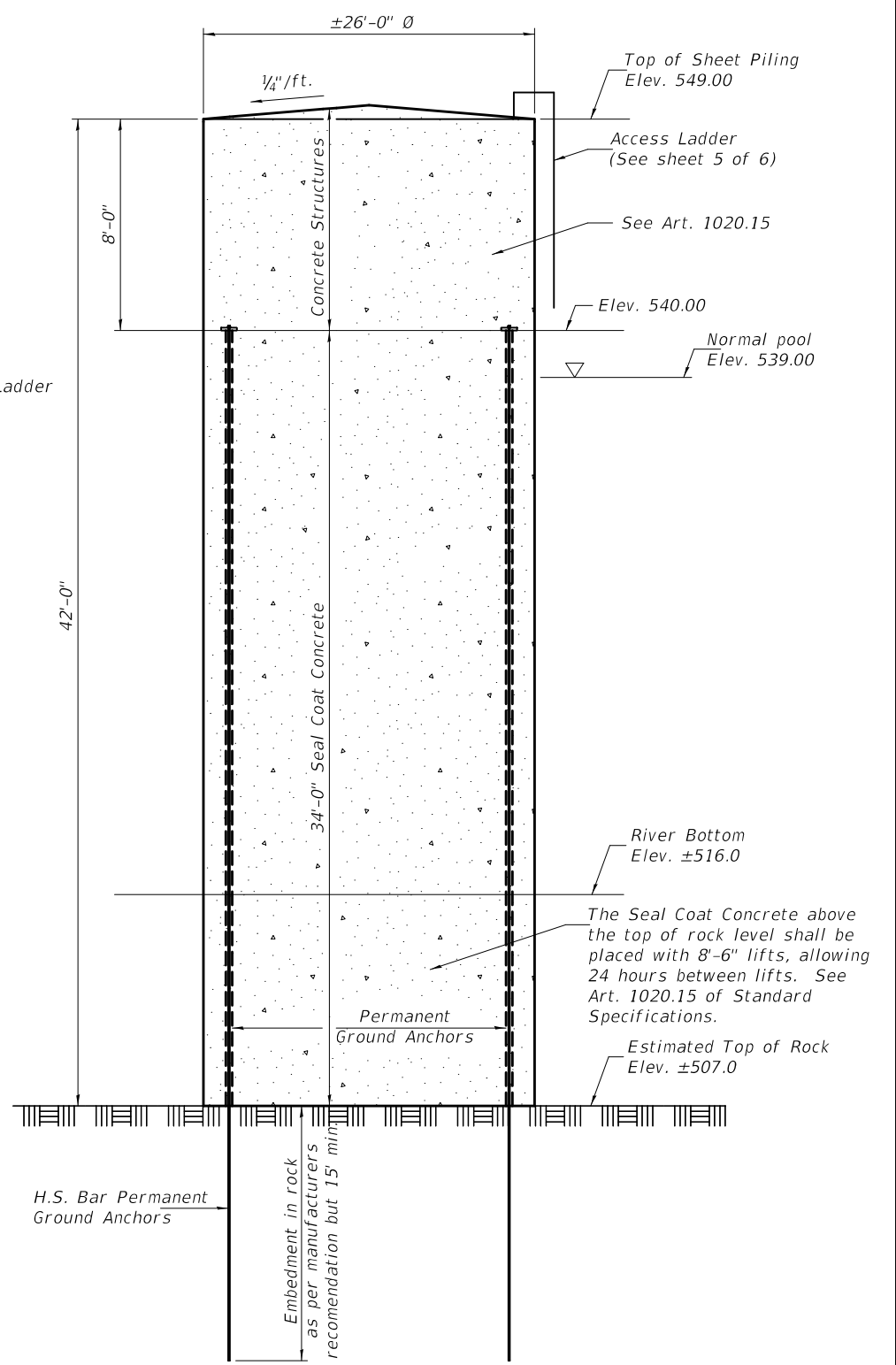


NAVIGATION LIGHT DETAIL



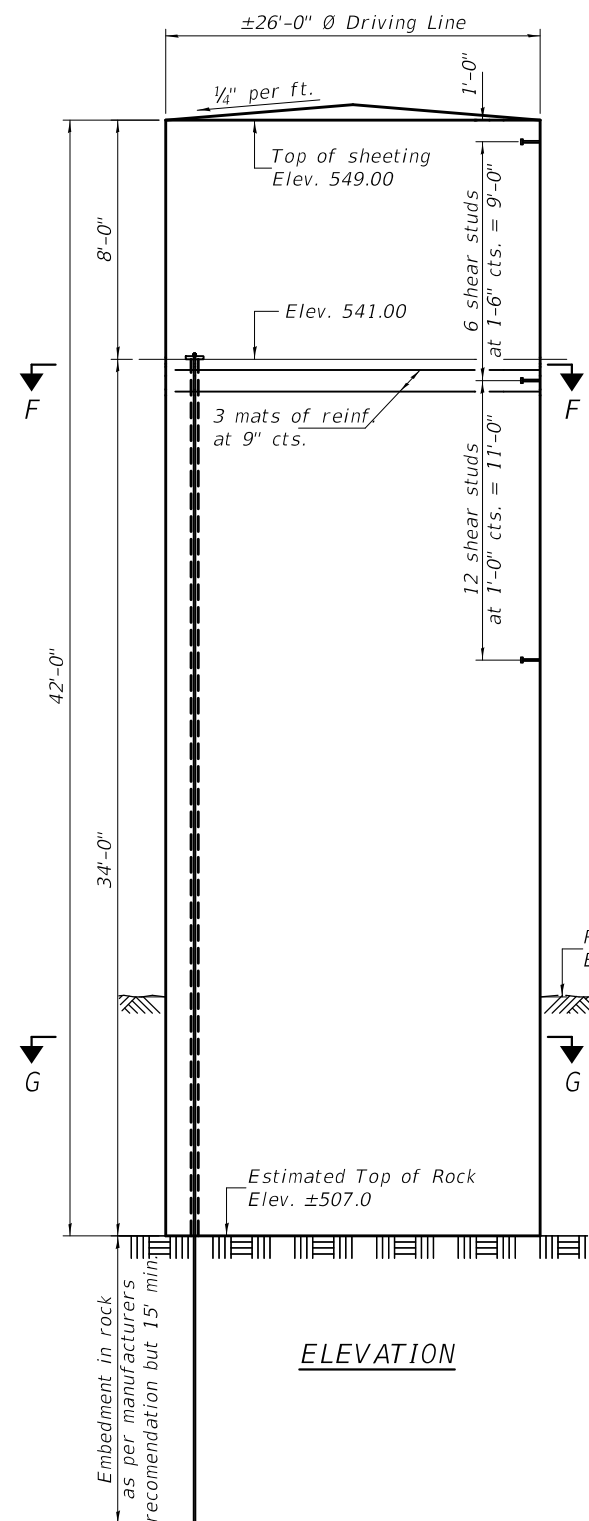
BORING LOG (R-3)

Boring Log information was taken from existing plans dated January 25, 1961.

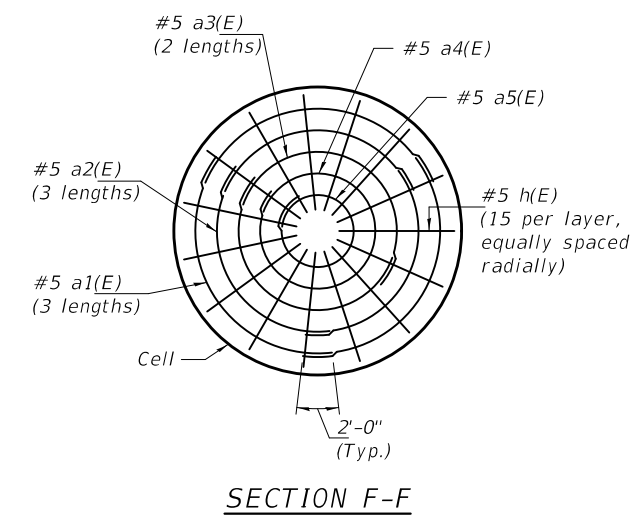


PIER PROTECTION CELL ELEVATION

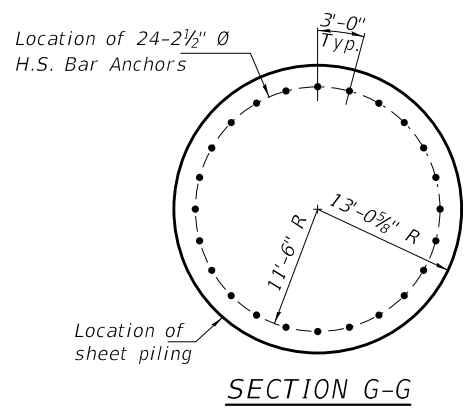
DESIGNED - VHV	EXAMINED - <i>Timothy A. Daburdell</i>	DATE - FEBRUARY 1, 2019	STATE OF ILLINOIS DEPARTMENT OF TRANSPORTATION	PIER PROTECTION CELL DETAILS SN 099-0056 (WB)	F.A.I. RTE.	SECTION	COUNTY	TOTAL SHEETS	SHEET NO.
CHECKED - WMK JGY	PASSED - <i>Carl R. Ringer</i>	REVISER -			80	2018-1124	WILL	13	6
DRAWN - daburdell	ENGINEER OF BRIDGES AND STRUCTURES	REVISER -	SHEET NO. 2 OF 6 SHEETS		CONTRACT NO. 62H35				
CHECKED - VHV WMK JGY	ENGINEER OF STRUCTURAL SERVICES				ILLINOIS FED. AID PROJECT				



ELEVATION



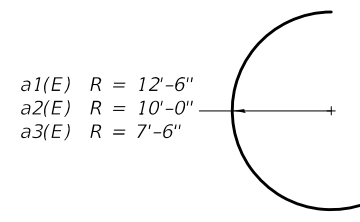
SECTION F-F



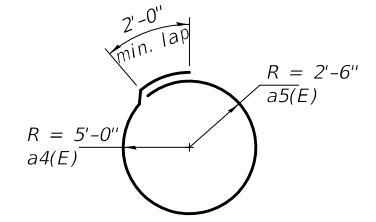
SECTION G-G

NOTES

Ground Anchor H.S. Bolts shall be high tensile strength alloy bars conforming to the requirements of AASHTO M275 Type I. Each bar shall be post-tensioned to a lock off load force of 100 Kips.
 The Anchor length of the H.S. bar into rock, the strength of the primary grout, & the grouting procedure should be such that a design load of 467 Kips per anchor is attained.



BARS a1(E), a2(E) & a3(E)



BARS a4(E) & a5(E)

BILL OF MATERIAL

Bar	No.	Size	Length	Shape
a1(E)	9	#5	28'-3"	C
a2(E)	9	#5	23'-0"	C
a3(E)	6	#5	25'-7"	C
a4(E)	3	#5	33'-5"	O
a5(E)	3	#5	17'-9"	O
h(E)	45	#5	12'-6"	—
** Spiral	24	#5	1'-6"	⋈
Reinforcement Bars			Pound	1860

**Length = Estimated height of spiral.

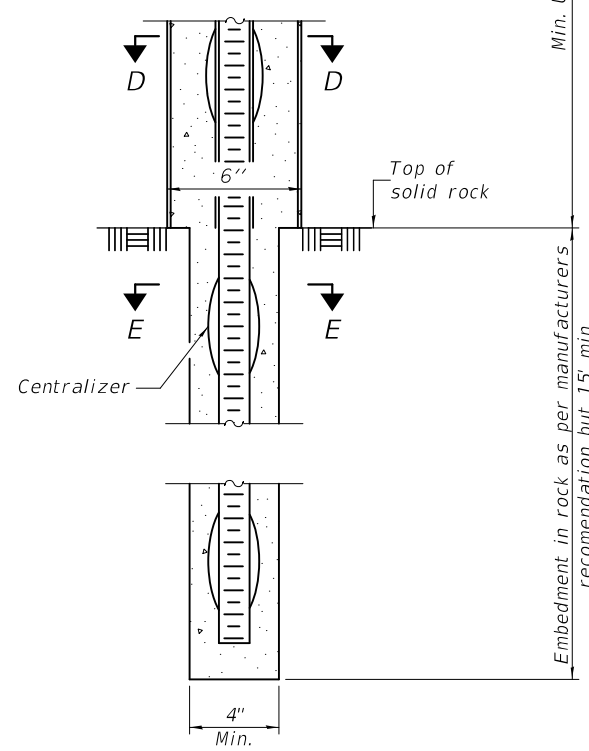
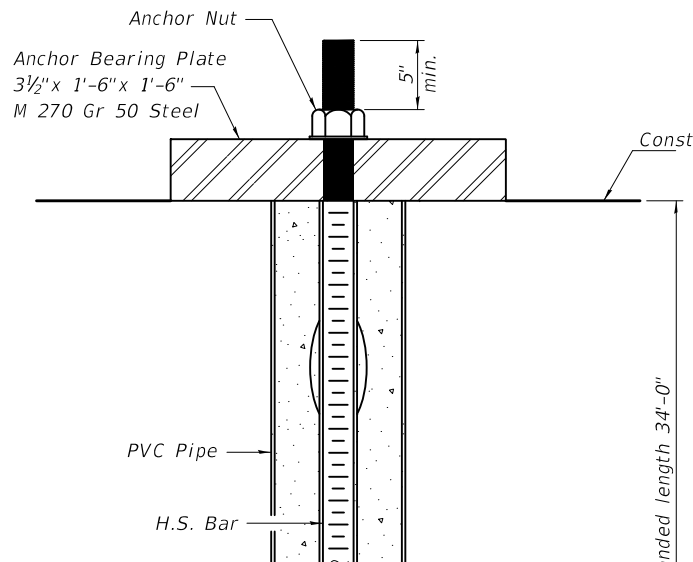
DESIGNED - VHV	EXAMINED - <i>Timothy A. Daburdell</i>	DATE - FEBRUARY 1, 2019
CHECKED - WMK JGY	ENGINEER OF STRUCTURAL SERVICES	
DRAWN - <i>daburdell</i>	PASSED - <i>Carl Ringer</i>	REVISER -
CHECKED - VHV WMK JGY	ENGINEER OF BRIDGES AND STRUCTURES	REVISER -

**STATE OF ILLINOIS
DEPARTMENT OF TRANSPORTATION**

**PIER PROTECTION CELL DETAILS
SN 099-0056 (WB)**

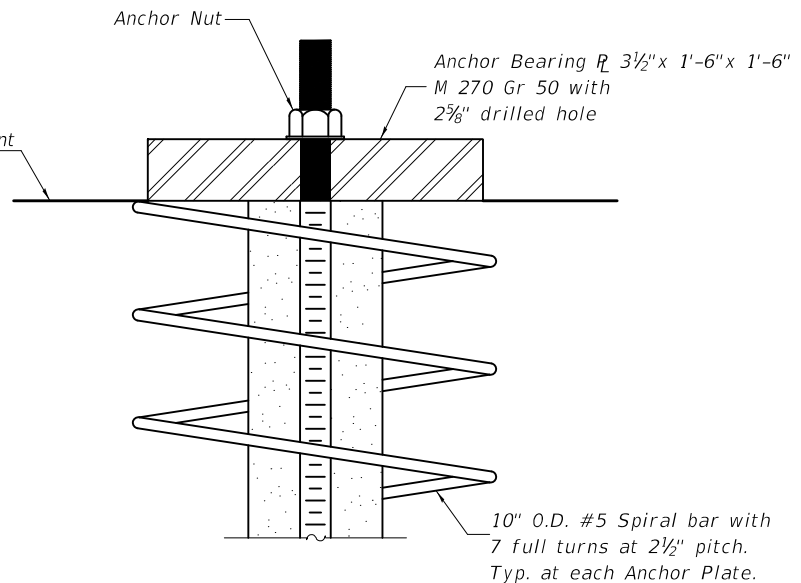
SHEET NO. 3 OF 6 SHEETS

F.A.I. RTE.	SECTION	COUNTY	TOTAL SHEETS	SHEET NO.
80	2018-1124	WILL	13	7
ILLINOIS FED. AID PROJECT			CONTRACT NO. 62H35	

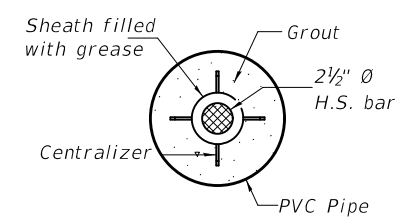


H.S. BAR ANCHOR ASSEMBLY (PRIMARY)
(See Special Provisions)

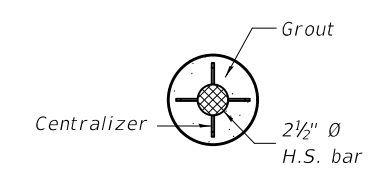
Note:
H.S. denotes High Strength Steel.



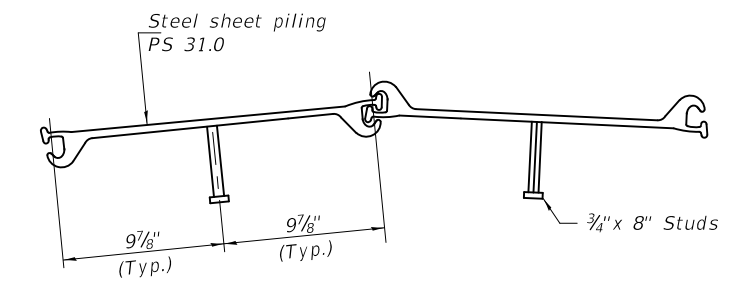
TOP ANCHOR DETAIL



SECTION D-D



SECTION E-E



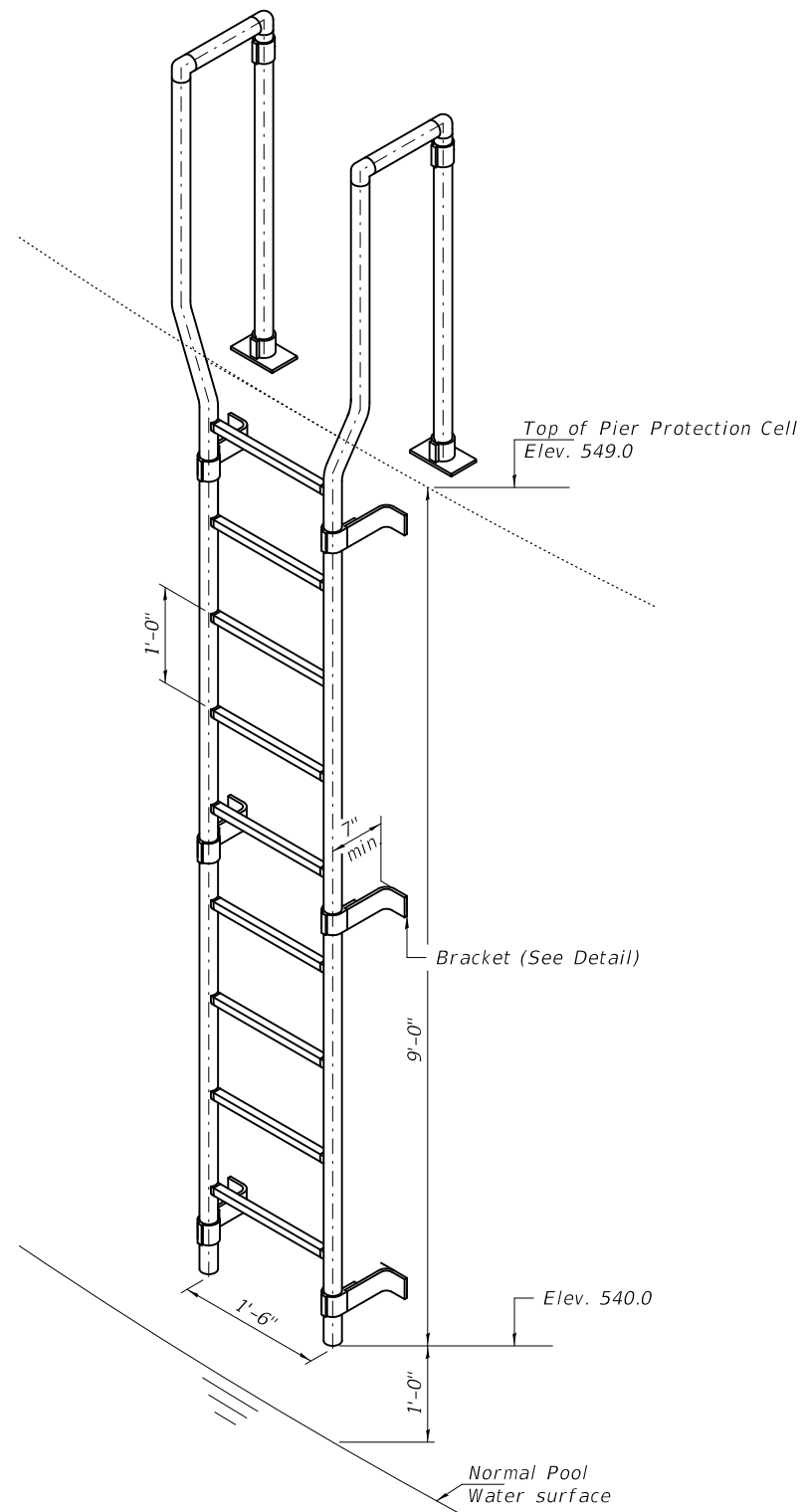
SHEET PILING DETAIL
(Req'd. = 50 sheets)

Note:
The steel sheet piling shall be provided with shear studs as shown.

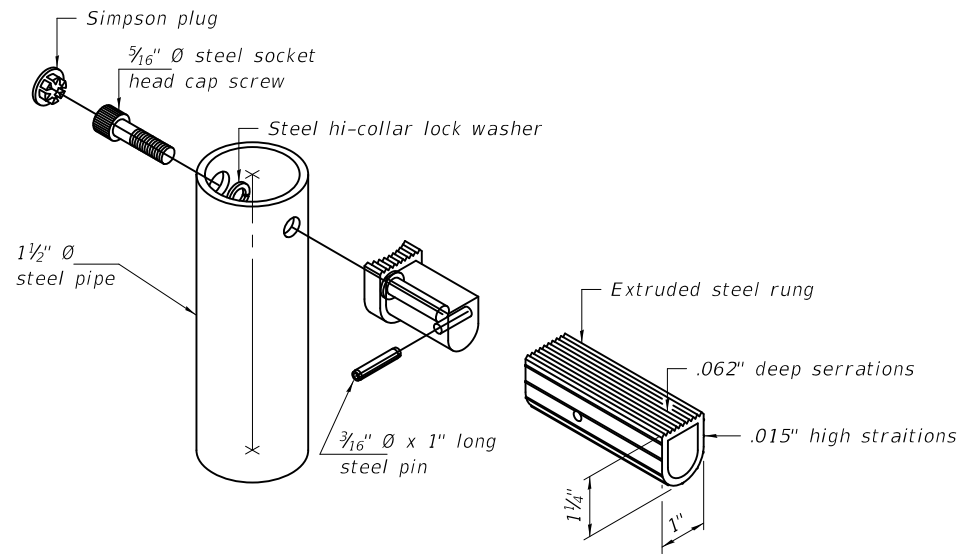


SIDE SCAN PHOTO SHOWING EXISTING SUBMERGED CELL
(For existing details, see sheet 6A of 6)

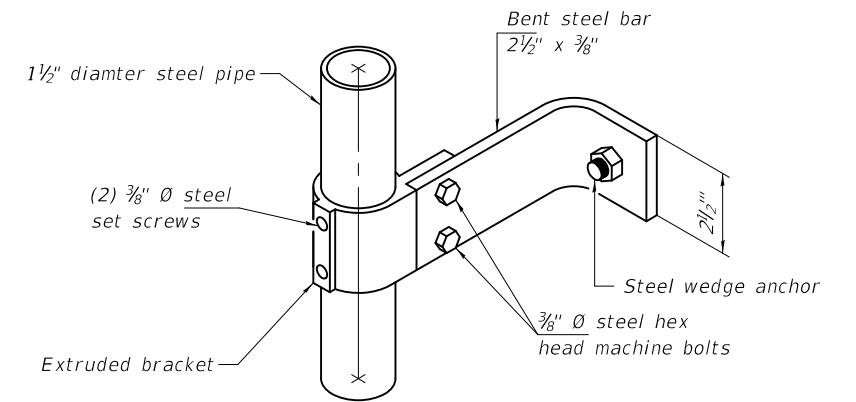
DESIGNED - VHV	EXAMINED - <i>Timothy A. Dabur</i> ENGINEER OF STRUCTURAL SERVICES	DATE - FEBRUARY 1, 2019	STATE OF ILLINOIS DEPARTMENT OF TRANSPORTATION	PIER PROTECTION CELL DETAILS SN 099-0056 (WB)	F.A.I. RTE.	SECTION	COUNTY	TOTAL SHEETS	SHEET NO.
CHECKED - WMK JGY	PASSED - <i>Carl Ringer</i> ENGINEER OF BRIDGES AND STRUCTURES	REVISED -			80	2018-112-4	WILL	13	8
DRAWN - daburdell		REVISED -	SHEET NO. 4 OF 6 SHEETS		CONTRACT NO. 62H35				
CHECKED - VHV WMK JGY					ILLINOIS FED. AID PROJECT				



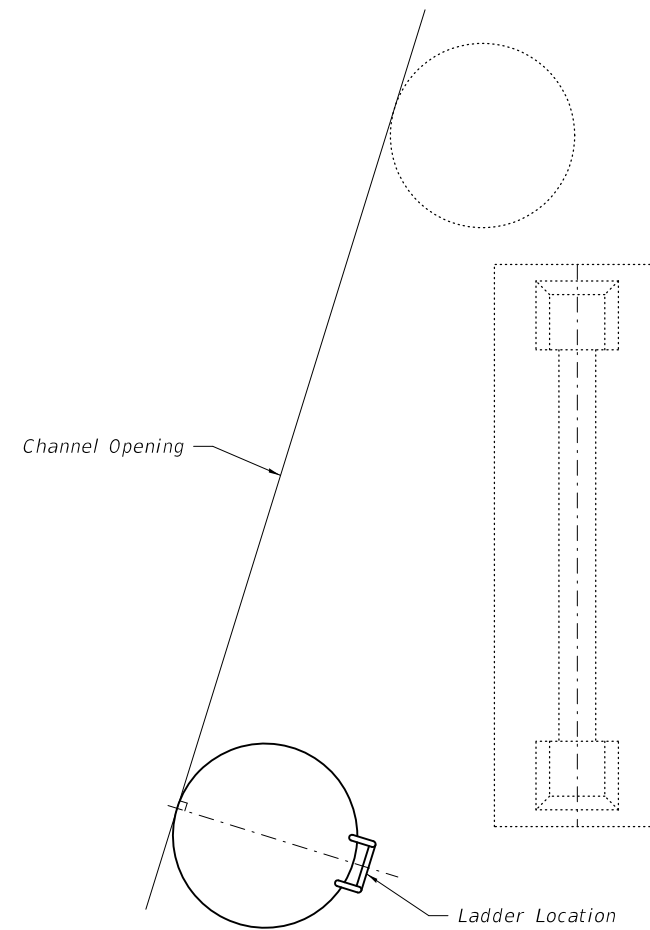
TYPICAL LADDER ELEVATION



DETAIL OF LADDER RUNG



DETAIL OF LADDER BRACKET



**PLAN
Pier 8 (EB)**

Note:
Cost of access ladder is included with
Furnishing and Erecting Structural Steel.

DESIGNED - VHV	EXAMINED - <i>Timothy A. Dabur</i> ENGINEER OF STRUCTURAL SERVICES	DATE - FEBRUARY 1, 2019
CHECKED - WMK JGY	PASSED - <i>Carl Ringer</i> ENGINEER OF BRIDGES AND STRUCTURES	REVISED -
DRAWN - daburdell		REVISED -
CHECKED - VHV WMK JGY		

**STATE OF ILLINOIS
DEPARTMENT OF TRANSPORTATION**

**LADDER DETAILS
SN 099-0056 (WB)**

SHEET NO. 5 OF 6 SHEETS

F.A.I. RTE.	SECTION	COUNTY	TOTAL SHEETS	SHEET NO.
80	2018-112-4	WILL	13	9
CONTRACT NO. 62H35				
ILLINOIS FED. AID PROJECT				

ILLINOIS DEPARTMENT OF TRANSPORTATION ROCK CORE LOG

Page 1 Of 1
Date 9/12/18

ROUTE **FAI 80** DESCRIPTION **Proposed Bridge Structure Improvement Project** Logged By **MB**

SECTION _____ LOCATION **Interstate I-80 & Des Plaines River, Joliet, IL** SEC TWP. RNG. PM

COUNTY **Will** CORING METHOD **ASTM D 2113-14**

STRUCT. NO. _____ (Prop.) CORING BARREL TYPE & SIZE **Diamond Bit 2-1/8"**

Station _____ Core Diameter **2.04"** in

BORING NO. **B-1** Top of Rock Elevation _____ M.S.L.

Station _____ Begin Core Elevation _____ M.S.L.

Offset _____

Ground Surface Elev. **+96.36 +/- M.S.L.**

DESCRIPTION	ELEV. (ft.)	DEPTH (ft.)	CORE (#)	RECOVERY (%)	R.Q.D. (%)	CORE TIME (min/ft)	STRENGTH (TSF)
APPARENT DOLOMITIC LIMESTONE BEDROCK, Gray, Weathered, Dry (SPT N = 50 Blows/0" - Refusal)	90.4	7.0					
SHALEY DOLOMITIC LIMESTONE BEDROCK, Gray and Greenish Gray, Fine Grained, Thinly Bedded, Slightly Weathered to Generally Fresh, Closely to Moderately Spaced Horizontal Joints, Widely Spaced Vertical Joints, Little Gray Silt Within Joints, Fair to Good Discontinuity Condition, Some Pitting and Vugs, Rock Quality is Fair, Medium Strong Rock (R3) (Depth: 9.75' - Dry Density = 162 PCF)	89.9	8.0					801
		9.0					
		10.0					
		11.0					
		12.0	RUN 1	93	64.0	1.8	
		13.0					
		14.0					
		15.0					
(Depth: 15.5' - Dry Density = 166 PCF)	79.9	16.0					337
SHALEY DOLOMITIC LIMESTONE BEDROCK, Gray, Greenish Gray, Pink, Fine Grained, Thinly Bedded, Slightly Weathered to Generally Fresh, Close to Moderate Spaced Horizontal Joints, Moderately Spaced Vertical Joints, Trace Gray Silt and Clay Within Joints, Fair Discontinuity Condition, Little Pitting and Vugs, Rock Quality is Fair, Medium Strong Rock (R3)		17.0					
		18.0					
		19.0					
		20.0	RUN 2	83	51.0	2.0	
		21.0					
		22.0					
		23.0					
(Depth: 22.0' - Dry Density = 163 PCF)	72.9	24.0					454
SHALEY DOLOMITIC LIMESTONE BEDROCK, Gray and Greenish Gray, Fine Grained, Thinly Bedded, Slightly Weathered to Generally Fresh, Closely Spaced Horizontal Joints, Moderately Spaced Vertical Joints, Trace Gray Silt Within Joints, Fair Discontinuity Condition, Trace Pitting and Vugs, Rock Quality is Fair, Medium Strong Rock (R3)		25.0					
		26.0					
		27.0					
		28.0	RUN 3	97	65.0	1.5	340
		29.0					
		30.0					
		31.0					
(Depth: 29.5' - Dry Density = 170 PCF)	63.9	32.0					548
		33.0					
		34.0					
		35.0					
		36.0					
		37.0					
		38.0					
		39.0					
		40.0					
		41.0					

End of Boring @ 32.5 Feet.

Note:
1) Total split spoon sampler and hollow stem auger refusal was encountered at approximately 6.5 feet below the existing ground surface level (N=50 blows/ 0 inch). A Tri-Cone rock roller bit was used to clean out the borehole before rock coring was started. At approximately 6.5 feet below the existing grade level, a NX size (2-1/8" diameter) 10 foot long diamond bit core barrel attached to the drill rods was then used to core the bedrock.

Color pictures of the cores **3**

Cores will be stored for examination until **9/12/19**

The "Strength" column represents the uniaxial compressive strength of the core sample (ASTM D 7012 which replaces ASTM D-2938)

SEECO Job No. 10612G-23

ILLINOIS DEPARTMENT OF TRANSPORTATION SOIL BORING LOG

Page 1 Of 1
Date 9/12/18

ROUTE **FAI 80** DESCRIPTION **Proposed Bridge Structure Improvements** Logged By **MB**

SECTION _____ LOCATION **Interstate I-80 & Des Plaines River, Joliet, IL** SEC TWP. RNG. PM

COUNTY **Will** STRUCTURE NO. _____ (Exist.) (Prop.)

Drilling Method **AASHTO T 206-09** Hammer Type **Automatic Hammer**

Boring No. **B-1**

Station _____

Offset _____

Ground Surface El. **+96.36 +/- M.S.L.**

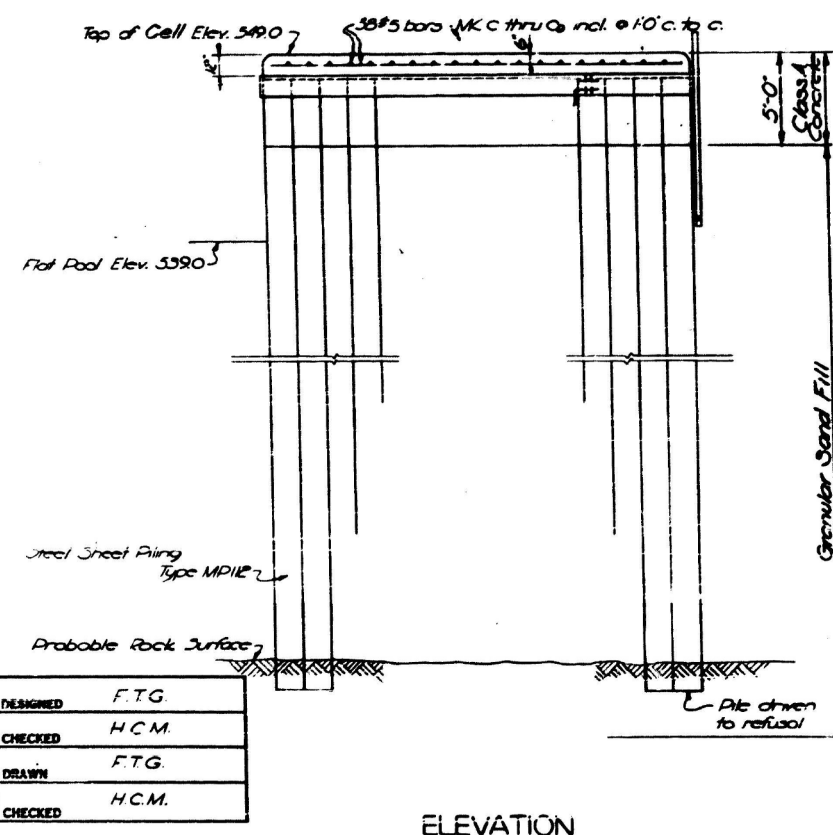
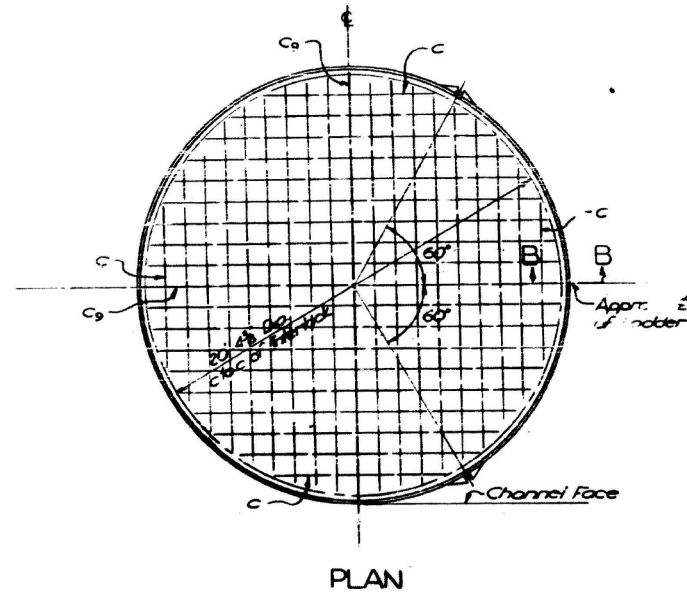
DESCRIPTION	ELEV. (M.S.L.)	DEPTH (ft.)	SPT N (blows)	UCS (TSF)	MOIST. (%)	Surf. Wat. El.	ELEV. (M.S.L.)	DEPTH (ft.)	SPT N (blows)	UCS (TSF)	MOIST. (%)
18" FILL: CLAY, Dark Brown and Black, Trace Sand and Gravel, Stiff, Moist (A-6)		1.0									
		3.0	3	1.75 P	27.5						
SAND AND GRAVEL, Brown and Tan, Some Cobble Pieces, Medium Dense, Dry (A-1-b)	94.9	8.0			7.4						
		11.0									
APPARENT VERY DOLOMITIC LIMESTONE BEDROCK WITH SAND AND GRAVEL, Tan, Contains Limestone Chips and Fragments, Very Dense, Dry	92.9	15.0									
		24.0			4.5						
		39.0									
(Hard Drilling from approximately 5 feet to 6 feet due to possible cobbles or large bedrock pieces- Driller's observation)		5.0									
APPARENT DOLOMITIC LIMESTONE BEDROCK, Gray, Weathered, Dry	90.4	6.0			0.3						
(SPT N = 50 Blows/0" - Refusal)	89.9	5.0									
Continued on Corresponding ROCK CORE LOG for Boring B-1.		7.0									
Note: 1) Top of weathered dolomitic limestone bedrock was encountered at approximately 6 feet below the existing ground surface level and top of solid dolomitic limestone was encountered at approximately 6.5 feet below the existing grade level. 2) Total split spoon sampler and hollow stem auger refusal was encountered at approximately 6.5 feet below the existing ground surface level (N=50 blows/ 0 inch). 3) Boring elevation shown is relative to a temporary benchmark (BM) that is the top of the I-80 EB Pier abutment P15, approximately 3 feet south of North Pier and is marked with an "X" and a temporary elevation of 100.00 feet.		8.0									
		9.0									
		10.0									

N=Standard Penetration Test-Blows per six inches to drive 2" O.D. (QU)B=Bulge S=Shear P=Penetrometer Test
Split Spoon Sampler 24" with 140lb hammer falling 30"
3.25" Diameter Hollow Stem Augers used between Split Spoon Sample intervals unless noted otherwise.

Drill Rig D-50 SEECO Job No. 10612G-23

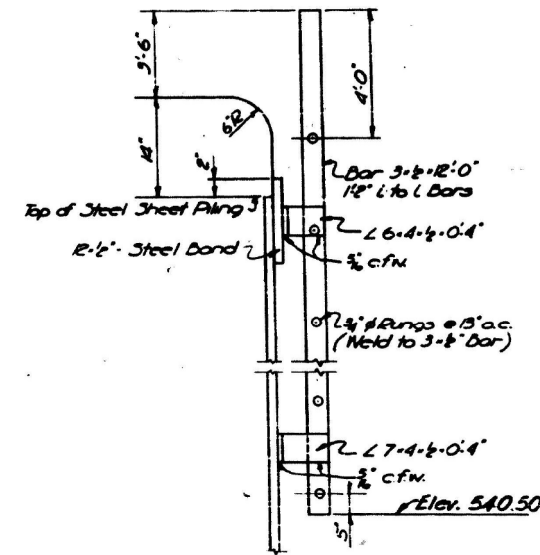
STATE OF ILLINOIS
DEPARTMENT OF PUBLIC WORKS & BUILDINGS
DIVISION OF HIGHWAYS

PROJECT NO.	SECTION	COUNTY	SHEET NO.	SHEET NO. 35
FAI-80	99-3B	WILL	71	52
TOTAL SHEETS				42 SHEETS
FED. ROAD DIST. NO. 7	ILLINOIS	PROJECT	1-80-113/33	



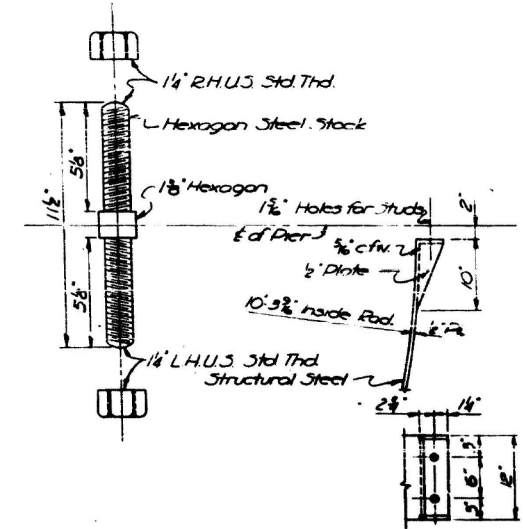
ELEVATION

SECTION A-A

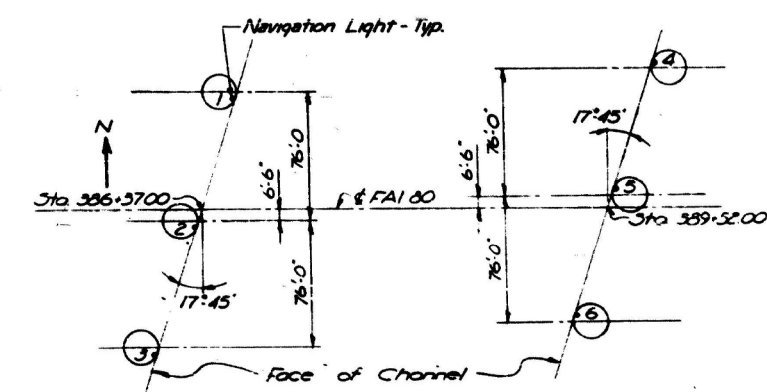


SECTION B-B

Ladder to be furnished for Cells Nos. 1, 3, 4, & 6



DETAIL OF STEEL BAND

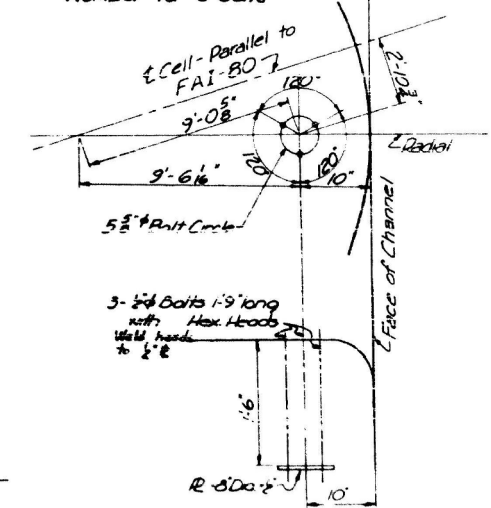


LOCATION PLAN

BAR LIST

Bar	No.	Size	Length	Shape
C	24	#5	8.8'	
C	24	#5	2.0'	
C	24	#5	14.3'	
C ₂	24	#5	6.0'	
C ₄	24	#5	17.4'	
C ₅	24	#5	13.4'	
C ₆	24	#5	19.1'	
C ₇	24	#5	9.8'	
C ₈	24	#5	20.0'	
C ₉	12	#5	20.0'	

* Number for 6 Cells

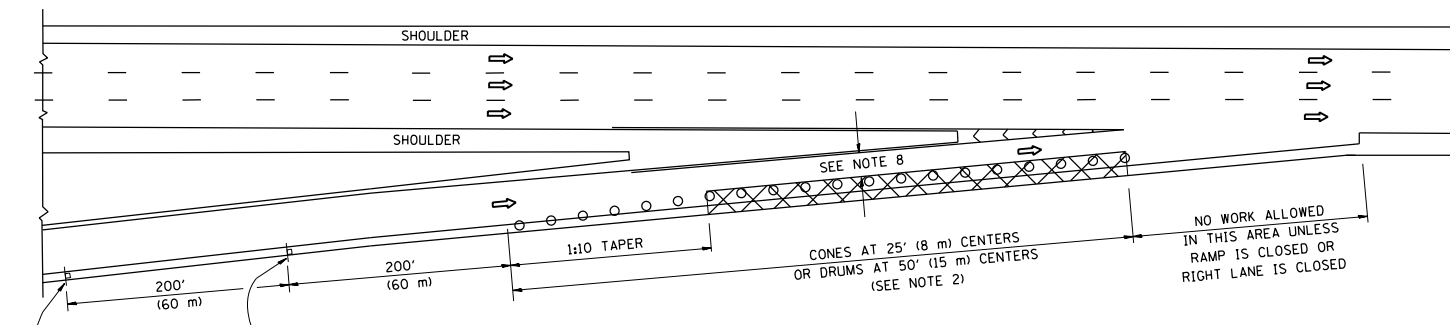


ANCHOR BOLT ASSEMBLY
For Navigation Lights on Cells Nos. 1, 3, 4, & 6
Note: See Special Provisions for Navigation Lights

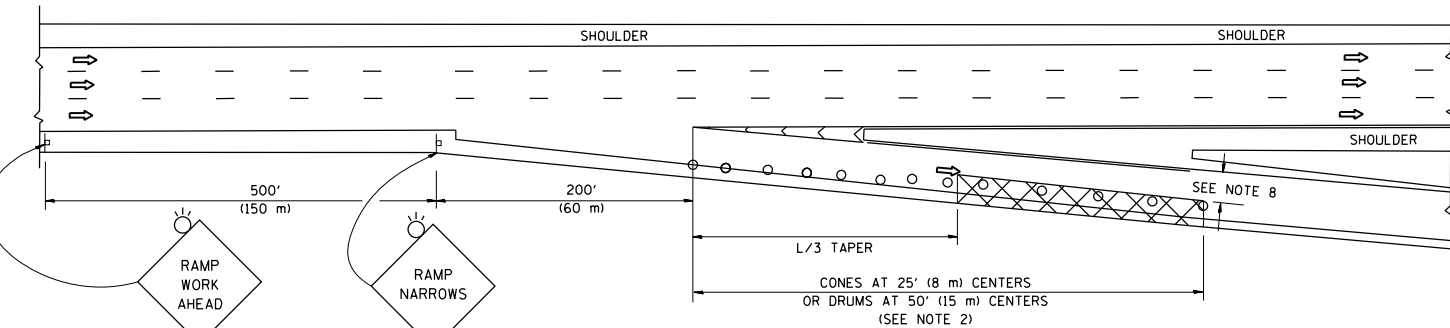
FOR INFORMATION ONLY

PIER PROTECTION CELLS
FAI-80 OVER DES PLAINES RIVER
STA. 387 + 94.50
FAI ROUTE 80 SECTION 99-3B PROJECT 1-80-113/33
WILL COUNTY
Scale: No Scale Date: Jan 25, 1961
BLAUVELT ENGINEERING CO.
CONSULTING ENGINEERS
WOODBURY N.J. NEW YORK, N.Y. CRYSTAL LAKE, ILL.

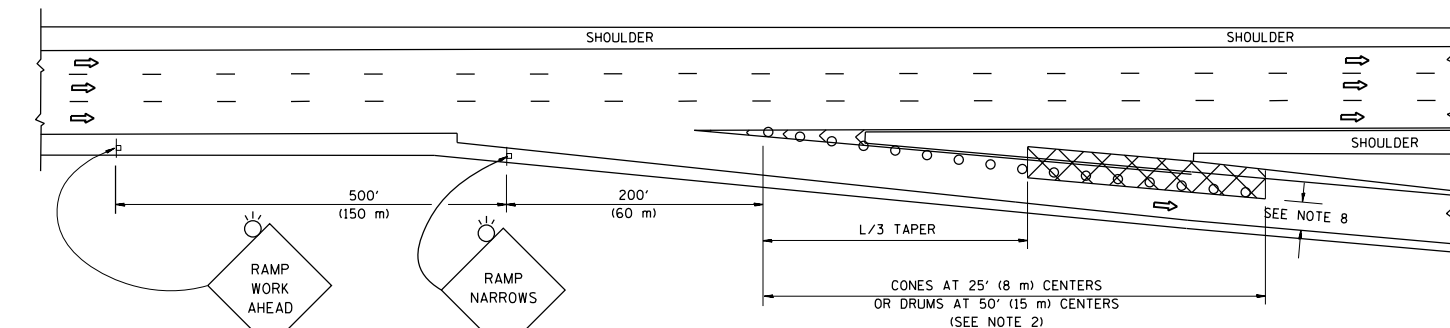
PARTIAL RAMP CLOSURE DETAILS



TYPICAL ENTRANCE RAMP



TYPICAL EXIT RAMP



TYPICAL EXIT RAMP

SYMBOLS

- ACTIVE WORK AREA
- SIGN ON PORTABLE OR PERMANENT SUPPORT
- FLAGGER WITH CONTROL SIGN
- TYPE II BARRICADE OR DRUM
- CONE, DRUM OR BARRICADE
- IMPACT ATTENUATOR OF TYPE AND TEST LEVEL SPECIFIED

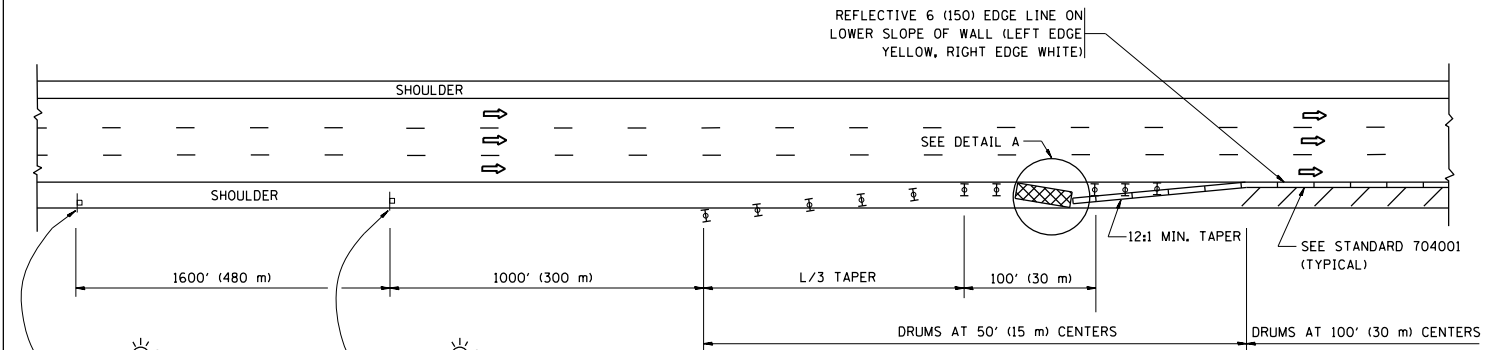
GENERAL NOTES

1. THE "L" DISTANCE EQUALS:

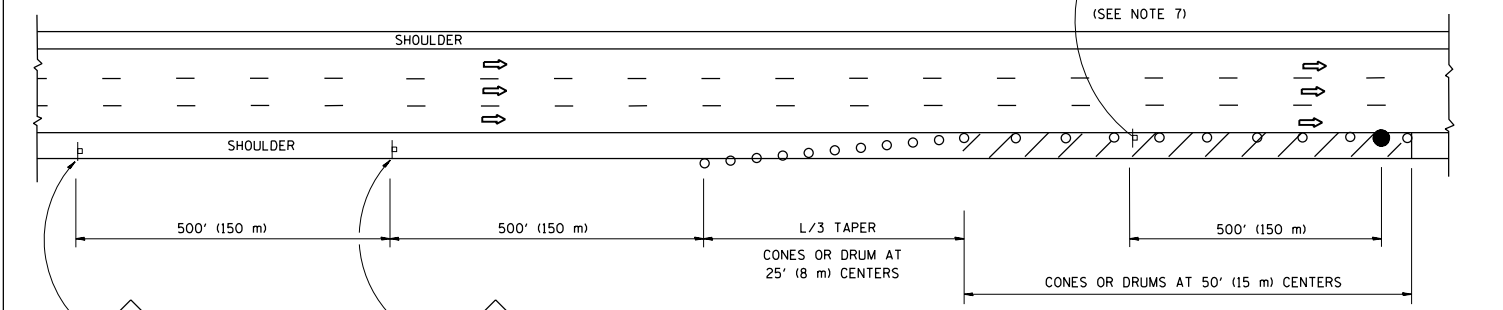
SPEED LIMIT	FORMULAS
45 mph (80 km/h)	METRIC ENGLISH
OR GREATER:	$L=0.65(W)(S)$ $L=(W)(S)$

W = WIDTH OF OFFSET IN FEET (METERS)
 S = NORMAL POSTED SPEED MPH (KM/H)
2. TYPE II BARRICADES OR DRUMS ARE REQUIRED FOR ALL NIGHTTIME CLOSURES. TYPE II BARRICADES OR DRUMS WITH MONODIRECTIONAL STEADY BURN LIGHTS ARE REQUIRED FOR DELINEATING OBSTACLES, EXCAVATIONS, OR HAZARDS EXCEEDING 100 FT (30m) IN LENGTH AT NIGHT.
3. ALL SIGNS SHALL BE POST MOUNTED IF THE CLOSURE TIME EXCEEDS FOUR DAYS.
4. FLASHING LIGHTS SHALL BE USED DURING THE HOURS OF DARKNESS AND SHALL BE INSTALLED ABOVE THE FIRST TWO SETS OF SIGNS.

SHOULDER CLOSURE DETAILS

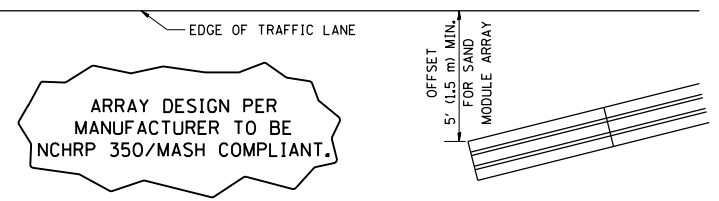


PERMANENT SHOULDER CLOSURE



DAYTIME SHOULDER CLOSURE

THIS DETAIL IS USED WHERE:
 1. VEHICLES, EQUIPMENT, WORKERS OR THEIR ACTIVITIES ENCRANCH IN AN AREA CLOSER THAN 15' (4.5 m) TO THE EDGE OF PAVEMENT FOR A PERIOD IN EXCESS OF 15 MINUTES.

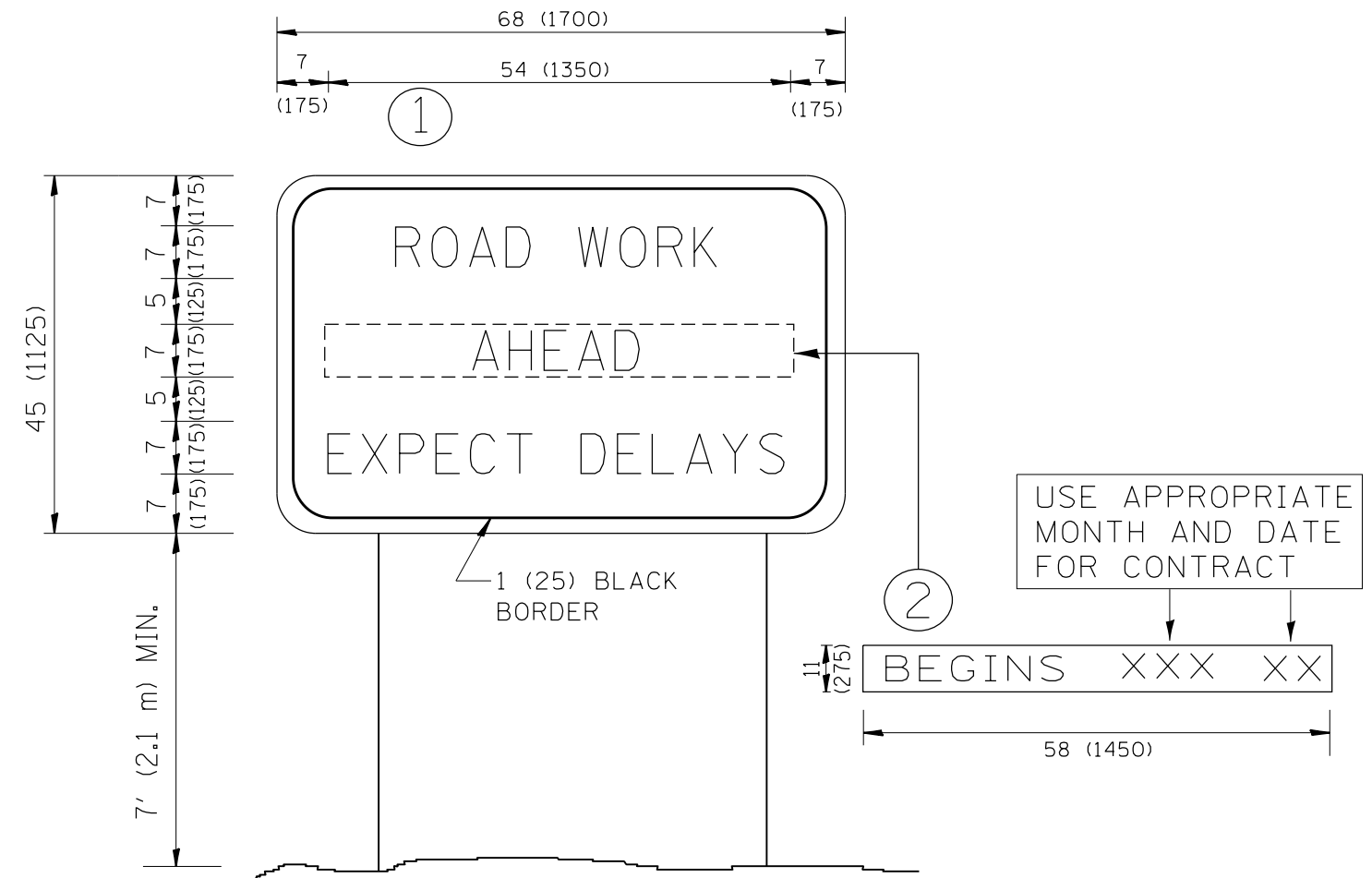


DETAIL "A"
 IMPACT ATTENUATOR, TEMPORARY
 (SEE NOTE 5)

5. THE IMPACT ATTENUATOR, TEMPORARY IS NOT REQUIRED WHEN THE TEMPORARY CONCRETE BARRIER WALL IS PROTECTED BY OR IS TIED INTO THE EXISTING GUARDRAIL. IF OFFSET IS LESS THAN 5 FEET USE NARROW USE TYPE DEVICE TO MEET NCHRP350/MASH.
6. AUTHORIZATION FROM THE DISTRICT'S BUREAU OF TRAFFIC IS REQUIRED FOR ALL FREEWAY CLOSURES.
7. THE FLAGGER AND FLAGGER SIGN ARE REQUIRED AT THE ABOVE WORK SITES WHEN:
 - a. FOUR OR MORE WORK VEHICLES ENTER THE TRAFFIC LANES IN A ONE HOUR PERIOD.
 - b. THE WORK AVTIVITY REQUIRES FREQUENT ENCRACHMENT INTO THE LANE OPEN TO TRAFFIC.
 THE FLAGGER SHALL BE STATIONED APPROXIMATELY 100' (30 m) TO 200' (60 m) IN ADVANCE OF THE WORKERS.
8. 12' MIN. WIDTH TANGENT SECTION
 16' MIN. WIDTH CURVE SECTION.

ALL DIMENSIONS ARE IN INCHES (MILLIMETERS) UNLESS OTHERWISE SHOWN.

FILE NAME =	USER NAME = ldezma	DESIGNED -	REVISED - S.P.B. 01-07	STATE OF ILLINOIS DEPARTMENT OF TRANSPORTATION	TRAFFIC CONTROL DETAILS FOR FREEWAY SHOULDER CLOSURES AND PARTIAL RAMP CLOSURES	F.A.I. RTE.	SECTION	COUNTY	TOTAL SHEETS	SHEET NO.
pw\11084EBIDINTEG\illinois.gov\PI\DOT\Documents\DOT Offices\District 1\Projects\11084EBIDINTEG\Design\DWG\Std.dgn	PLLOT SCALE = 100.0000' / 1in.	CHECKED -	REVISED - S.P.B. 12-09			80	2018-112-1	WILL	13	10
Default	PLLOT DATE = 12/14/2018	DATE - 11-96	REVISED - M.D. 06-13			TC-17		CONTRACT NO. 62H35		
			REVISED - M.D. 01-18			SCALE: NONE	SHEET 1 OF 1 SHEETS	STA. TO STA.	ILLINOIS FED. AID PROJECT	

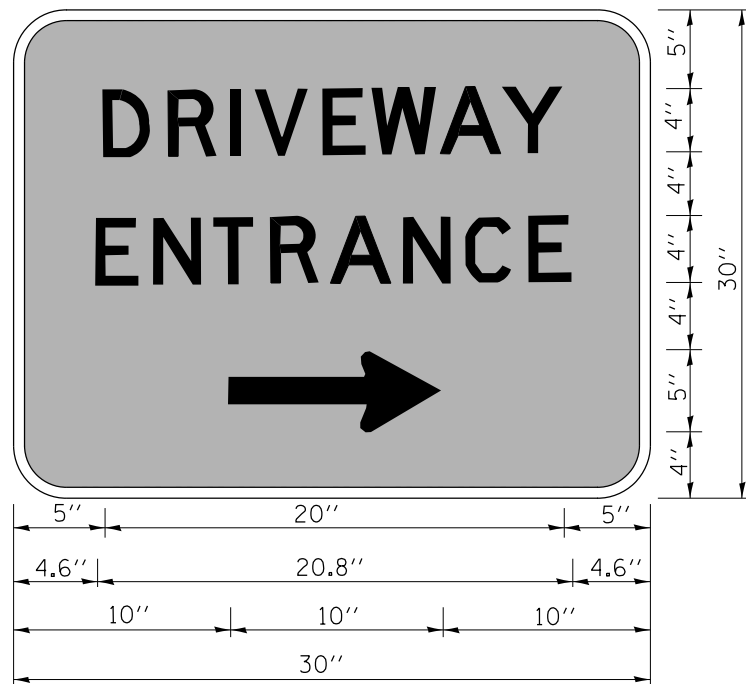


NOTES:

1. USE BLACK LETTERING ON ORANGE BACKGROUND.
2. ERECT SIGNS IN ADVANCE OF THE LOCATION FOR THE "ROAD CONSTRUCTION AHEAD" SIGN AT LOCATIONS AS DIRECTED BY THE ENGINEER.
3. ERECT SIGN ① WITH INSTALLED PANEL ② ONE WEEK PRIOR TO THE START OF CONSTRUCTION.
4. REMOVE PANEL ② SOON AFTER THE START OF CONSTRUCTION.
5. SEE SPECIAL PROVISION FOR "TEMPORARY INFORMATION SIGNING" FOR ADDITIONAL INFORMATION.
6. ONE SIGN ASSEMBLY EQUALS 25.70 SQ. FT. (2.3 SQ. M.)
7. SHALL BE PAID FOR AS TEMPORARY INFORMATION SIGNING.

ALL DIMENSIONS ARE IN INCHES (MILLIMETERS) UNLESS OTHERWISE SHOWN.

FILE NAME =	USER NAME = ledezmar	DESIGNED -	REVISED - R. MIRS 09-15-97	STATE OF ILLINOIS DEPARTMENT OF TRANSPORTATION	ARTERIAL ROAD INFORMATION SIGN	F.A.I. RTE.	SECTION	COUNTY	TOTAL SHEETS	SHEET NO.
p:\11084EBIDINTEG.illinois.gov\PIWIDOT\Documents\DOT Offices\District 1\Projects\DI0400\Drawings\Design\DistStd.dgn		CHECKED -	REVISED - R. MIRS 12-11-97			80	2018-112-1	WILL	13	12
		PLOT SCALE = 100.0000' / 1in.	REVISED - T. RAMMACHER 02-02-99			TC-22		CONTRACT NO. 62H35		
		DATE -	REVISED - C. JUCIUS 01-31-07			SCALE: NONE		SHEET NO. 1 OF 1 SHEETS		STA. TO STA.
				FED. ROAD DIST. NO. 1 ILLINOIS FED. AID PROJECT						



3.0" RADIUS, 0.5" BORDER, WHITE ON GREEN; REFLECTORIZED
 "DRIVEWAY" D; "ENTRANCE" D; STANDARD ARROW CUSTOM 12.0" x 5.0"

NOTES:

1. HALF OF THE SIGNS WILL REQUIRE A LEFT HAND FACING ARROW.
2. TWO SIGNS SHALL BE USED AT EACH COMMERCIAL ENTRANCE
 PLACED BACK-TO-BACK; ONE WITH A RIGHT HAND ARROW (SHOWN)
 SHALL BE PLACED ON THE NEAR RIGHT SIDE THE DRIVEWAY
 AND ONE WITH A LEFT HAND ARROW SHALL BE PLACED ON THE
 FAR LEFT SIDE OF THE DRIVEWAY.
3. SIGNS TO BE PAID FOR AS ITEM "TEMPORARY INFORMATION SIGNING".

FILE NAME =	USER NAME = ledezmar	DESIGNED -	REVISED - C. JUCIUS 02-15-07
p:\11084EBIDINTEG.illinois.gov\PIWIDOT\Documents\DOT Offices\District 1\Projects\DI04000000\Drawings\Design\DistStd.dgn		CHECKED -	REVISED -
	PLOT SCALE = 100.0000' / 1"	DATE -	REVISED -
	PLOT DATE = 12/14/2018		

**STATE OF ILLINOIS
 DEPARTMENT OF TRANSPORTATION**

DRIVEWAY ENTRANCE SIGNING

SCALE: NONE SHEET NO. 1 OF 1 SHEETS STA. TO STA.

F.A.I. RTE.	SECTION	COUNTY	TOTAL SHEETS	SHEET NO.
80	2018-112-1	WILL	13	13
TC-26			CONTRACT NO. 62H35	
FED. ROAD DIST. NO. 1 ILLINOIS FED. AID PROJECT				