

042

03-08-2019 LETTING ITEM 042

STATE OF ILLINOIS
DEPARTMENT OF TRANSPORTATION

F.A.P. RATE	SECTION	COUNTY	TOTAL SHEETS	SHEET NO.
103	29-1-N-TS-3	ST. CLAIR	22	1
		ILLINOIS	CONTRACT NO. 76L67	

FOR INDEX OF SHEETS, SEE SHEET NO. 2

PROPOSED HIGHWAY PLANS

FAP ROUTE 103 (IL 15)
SECTION 29-1-N-TS-3
PROJECT NHPP-1Q9S(121)
INTERSECTION IMPROVEMENT &
TRAFFIC SIGNAL REPLACEMENT
ST. CLAIR COUNTY

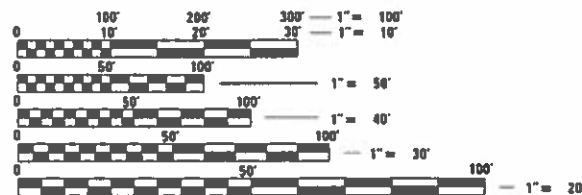
FAP 103 (NW LEG) ADT	
2019 = 16,000 (ESTIMATED)	
SU = 1.9%	MU = 2.1%

FAP 103 (SE LEG) ADT	
2019 = 16,200 (ESTIMATED)	
SU = 2.0%	MU = 2.2%

IL 163 ADT	
2019 = 6,500 (ESTIMATED)	
SU = 2.7%	MU = 0.5%

POCKET RD ADT	
2019 = 2,550 (ESTIMATED)	
SU = 3.6%	MU = 0.1%

FUNCTIONAL CLASSIFICATION:
OTHER ARTERIAL



FULL SIZE PLANS HAVE BEEN PREPARED USING STANDARD ENGINEERING SCALES. REDUCED SIZED PLANS WILL NOT CONFORM TO STANDARD SCALES. IN MAKING MEASUREMENTS ON REDUCED PLANS, THE ABOVE SCALES MAY BE USED.

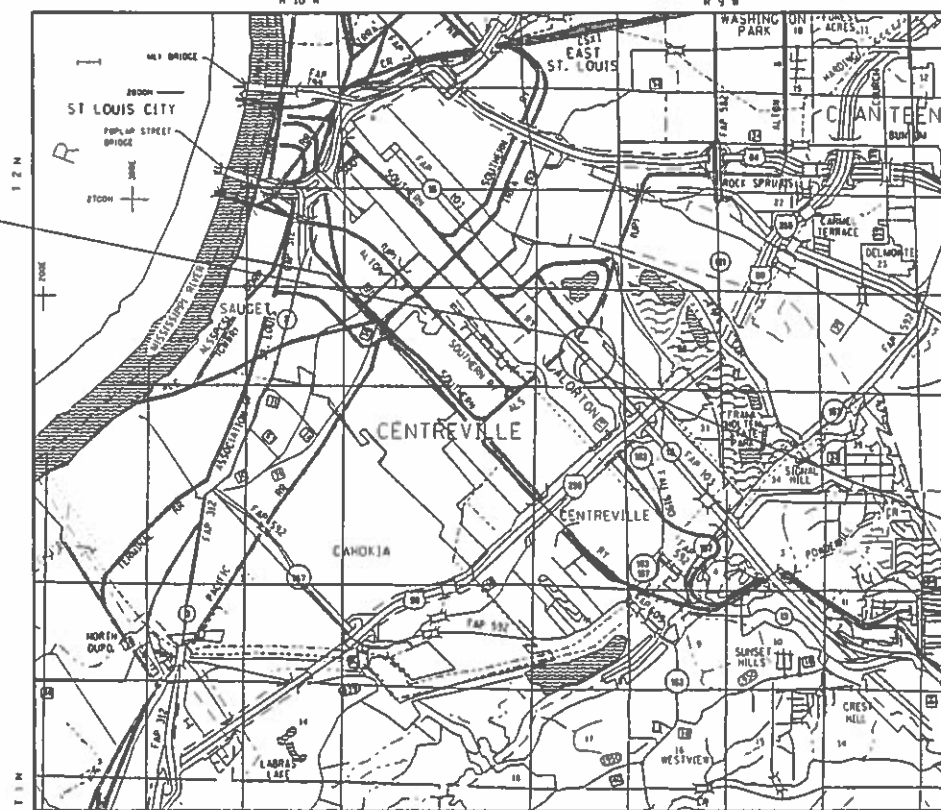
J.U.L.I.E.
JOINT UTILITY LOCATION INFORMATION FOR EXCAVATION
1-800-892-0123
OR 811

PROJECT ENGINEER: HERVE GELIN (618) 346-3179
PROJECT MANAGER: ALVIN NIEVES-ROSARIO (618) 346-3145

CONTRACT NO. 76L67

C-98-269-18

BEGIN PROJECT
STA. 50+54.75



LOCATION MAP
(NOT TO SCALE)

GROSS LENGTH = 885.10 FT. = 0.168 MILE
NET LENGTH = 885.10 FT. = 0.168 MILE

END PROJECT
STA. 59+39.85

D-98-082-18



LOCATION OF SECTION INDICATED THUS: -

STATE OF ILLINOIS
DEPARTMENT OF TRANSPORTATION

SUBMITTED *Dec 4 2018*
Jeffrey L. Kan... REGIONAL ENGINEER
Feb 1 2019
E.A. Etk... ENGINEER OF DESIGN AND ENVIRONMENT
Feb 1 2019
David P. Chu DIRECTOR OF HIGHWAYS PROJECT IMPLEMENTATION

PRINTED BY THE AUTHORITY
OF THE STATE OF ILLINOIS

INDEX OF SHEETS

1. COVER SHEET
2. GENERAL NOTES, HIGHWAY STANDARDS, & COMMITMENTS
- 3-5. SUMMARY OF QUANTITIES
- 6-9. TYPICAL SECTIONS
- 10-12. SCHEDULE OF QUANTITIES
13. BENCHMARK, REMOVAL, & PROPOSED PLAN SHEET
14. MEDIAN & ISLAND DETAILS
15. PAVEMENT MARKING PLAN
- 16-21. ELECTRICAL PLAN SHEETS
22. DETAIL SHEET

HIGHWAY STANDARDS

000001-07	STANDARD SYMBOLS, ABBREVIATIONS AND PATTERNS
001006	DECIMAL OF AN INCH AND OF A FOOT
606301-04	PC CONCRETE ISLANDS AND MEDIANS
701701-10	URBAN LANE CLOSURE, MULTILANE INTERSECTION
701901-08	TRAFFIC CONTROL DEVICES
780001-05	TYPICAL PAVEMENT MARKINGS
782001-01	CURB REFLECTORS
805001-01	ELECTRICAL SERVICE INSTALLATION DETAILS
814001-03	HANDHOLES
814006-02	DOUBLE HANDHOLES
873001-02	TRAFFIC CONTROL GROUNDING & BONDING
876001-04	PEDESTRIAN PUSH BUTTON POST
877002-04	STEEL MAST ARM ASSEMBLY AND POLE 56' THROUGH 75'
878001-10	CONCRETE FOUNDATION DETAILS
880006-01	TRAFFIC SIGNAL MOUNTING DETAILS
886001-01	DETECTOR LOOP INSTALLATIONS
886006-01	TYPICAL LAYOUT FOR DETECTION LOOPS

GENERAL NOTES

1. ILLINOIS STATE LAW REQUIRES A 48-HOUR NOTICE BE GIVEN TO ALL UTILITIES WITHIN THE PROJECT AREA BEFORE DIGGING. FIELD MARKING OF FACILITIES MAY BE OBTAINED BY CONTACTING J.U.L.I.E. OR FOR NON-MEMBERS, THE UTILITY COMPANY DIRECTLY. AGENCIES KNOWN TO HAVE FACILITIES WITHIN THE PROJECT AREA ARE AS FOLLOWS:

UTILITY	ABOVE GROUND	BELOW GROUND
•AMEREN ILLINOIS	X	X
•AT&T ILLINOIS	X	X
•AT&T CORPORATION	X	X
•BUCKEYE PARTNERS L.P. -- WOOD RIVER PIPELINE		X
•COMMONFILEDS OF CAHOKIA PUBLIC WATER DISTRICT		X
•ENABLE MIDSTREAM PARTNERS		X
•ILLINOIS AMERICAN WATER COMPANY		X
•LEVEL 3 COMMUNICATIONS, LLC	X	X
•VERIZON BUSINESS	X	X

MEMBERS OF J.U.L.I.E. CALL TOLL FREE (800) 892-0123 OR 811 AND ARE INDICATED BY •. NON- J.U.L.I.E. MEMBERS MUST BE NOTIFIED INDIVIDUALLY.

2. THE CONTRACTOR AND THE ENGINEER SHALL BE AWARE THAT NO SURVEY WAS PERFORMED FOR THIS PROJECT. THE STATIONING, TOPOGRAPHY, AND QUANTITIES SHOWN IN THE PLANS WERE CREATED USING MICROFILM AND FIELD MEASUREMENTS. ALL SHALL BE ASSUMED TO BE APPROXIMATE. THE CONTRACTOR SHALL VERIFY DIMENSIONS AND CONDITIONS IN THE FIELD PRIOR TO CONSTRUCTION AND ORDERING OF MATERIALS.
3. THE DEPARTMENT STRONGLY ENCOURAGES THE PRIME CONTRACTOR AND THEIR APPROVED SUB-CONTRACTORS TO HIRE MINORITY, WOMEN AND DISADVANTAGED INDIVIDUALS FROM ITS FEDERALLY FUNDED HIGHWAY CONSTRUCTION CAREERS TRAINING PROGRAM (HCCTP) TO HELP MEET WORKFORCE AND TRAINEE GOALS. THIS PROGRAM IS TRAINING MINORITIES, WOMEN AND DISADVANTAGED INDIVIDUALS IN HIGHWAY CONSTRUCTION-RELATED SKILLS, E.G., MATH FOR THE TRADES, JOB READINESS, TECHNICAL SKILLS COURSEWORK (CARPENTRY, CONCRETE FLATWORK, BLUEPRINT READING, SITE PLANS, SITE WORK, TOOLS USE, ETC.) AND OSHA 10 HOUR CERTIFICATION, TO PREPARE THEM FOR A CAREER IN THE HIGHWAY CONSTRUCTION TRADES. GRADUATES ARE WELL-TRAINED AND READY TO BECOME PRODUCTIVE ENTRY-LEVEL CONSTRUCTION WORKERS. CONTACT THE DISTRICT 8 EEO OFFICE AT 618-346-3360 AND/OR THE HCCTP COORDINATOR AT 618-874-6528 TO LEARN MORE ABOUT THE PROGRAM AND FOR ASSISTANCE IN MEETING WORKFORCE AND TRAINEE GOALS.
4. "ROAD CONSTRUCTION AHEAD" SIGNS SHALL BE PLACED AT EACH END OF THE PROJECT PLUS THE INTERSECTING SIDE ROADS, AND WILL BE CONSIDERED INCLUDED IN THE TRAFFIC CONTROL PAY ITEMS. ALL CONSTRUCTION SIGNS SHALL BE 48" X 48" FLUORESCENT ORANGE.

THE FOLLOWING MIXTURE REQUIREMENTS ARE APPLICABLE FOR THIS PROJECT:

MIXTURE USE	POLY SURFACE
AC/PG	SBS PG 76-22
RAP %(MAX)	SEE SPECIAL PROVISION
DESIGN AIR VOIDS	4.0% @ Ndes=70
MIX COMPOSITION (GRADATION)	IL 9.5
FRICTION AGG	MIXTURE "D"
QUALITY MGMT PROGRAM	QC/OA

PLAN QUANTITIES FOR BITUMINOUS CONCRETE SURFACE COURSE ITEMS ARE CALCULATED USING A UNIT WEIGHT OF 112 LBS/SQ YD/IN (59.8 KG/SQ M/25 MM THICKNESS)

COMMITMENTS

NONE

MODEL: Default
 FILE: \\nls0108\B&E\ID\NTEC\Illinois\gov\PI\DOT\Documents\DOT - Office\DL\rlfct 8\Projects\0876\67\CAD\data\CAD\sheet\08767-zht-gennete.dgn

USER NAME = humphreysb	DESIGNED -	REVISED -	STATE OF ILLINOIS DEPARTMENT OF TRANSPORTATION	GENERAL NOTES, HIGHWAY STANDARDS, & COMMITMENTS			F.A.P. RTE.	SECTION	COUNTY	TOTAL SHEETS	SHEET NO.
DRAWN -	REVISIED -	103					29-1-N-TS-3	ST. CLAIR	22	2	
PLOT SCALE = 100.0000 ' / in.	CHECKED -	REVISED -		CONTRACT NO. 76L67							
PLOT DATE = 12/10/2018	DATE -	REVISED -		SCALE: NTS	SHEET 1	OF 1 SHEETS	STA.	TO STA.	ILLINOIS FED. AID PROJECT		

CODE NO.	ITEM	UNIT	TOTAL QUANTITY	CONSTR. CODE	
				FEDERAL 80% STATE 20%	TRAFFIC SIGNALS 0021 URBAN
40603540	POLYMERIZED HOT-MIX ASPHALT SURFACE COURSE, MIX "D", N70	TON	21	21	
40800029	BITUMINOUS MATERIALS (TACK COAT)	POUND	76	76	
44000100	PAVEMENT REMOVAL	SQ YD	22	22	
44000500	COMBINATION CURB AND GUTTER REMOVAL	FOOT	1539	1539	
44003100	MEDIAN REMOVAL	SQ FT	2704	2704	
44200535	CLASS A PATCHES, TYPE IV, 8 INCH	SQ YD	107	107	
44200651	CLASS A PATCHES, TYPE IV, 18 INCH	SQ YD	56	56	
44213000	PATCHING REINFORCEMENT	SQ YD	163	163	
60603500	COMBINATION CONCRETE CURB AND GUTTER, TYPE B-6.06	FOOT	515.5	515.5	
60603800	COMBINATION CONCRETE CURB AND GUTTER, TYPE B-6.12	FOOT	47.5	47.5	
60605000	COMBINATION CONCRETE CURB AND GUTTER, TYPE B-6.24	FOOT	1169.0	1169.0	
60607400	COMBINATION CONCRETE CURB AND GUTTER, TYPE B-9.24	FOOT	60.0	60.0	
60618300	CONCRETE MEDIAN SURFACE, 4 INCH	SQ FT	4207	4207	
66900105	UNDERGROUND STORAGE TANK REMOVAL	EACH	1	1	

CODE NO.	ITEM	UNIT	TOTAL QUANTITY	CONSTR. CODE	
				FEDERAL 80% STATE 20%	TRAFFIC SIGNALS 0021 URBAN
* 66900200	NON-SPECIAL WASTE DISPOSAL	CU YD	35	35	
* 66900530	SOIL DISPOSAL ANALYSIS	EACH	1	1	
* 66901001	REGULATED SUBSTANCES PRE-CONSTRUCTION PLAN	L SUM	1	1	
* 66901002	ON-SITE MONITORING OF REGULATED SUBSTANCES	CAL DA	3	3	
* 66901003	REGULATED SUBSTANCES FINAL CONSTRUCTION REPORT	L SUM	1	1	
67000400	ENGINEER'S FIELD OFFICE, TYPE A	CAL MO	4	4	
67100100	MOBILIZATION	L SUM	1	1	
70102635	TRAFFIC CONTROL AND PROTECTION, STANDARD 701701	L SUM	1	1	
70103815	TRAFFIC CONTROL SURVEILLANCE	CAL DA	55	55	
70300210	TEMPORARY PAVEMENT MARKING LETTERS AND SYMBOLS	SQ FT	187	187	
70300220	TEMPORARY PAVEMENT MARKING - LINE 4"	FOOT	5182	5182	
70300250	TEMPORARY PAVEMENT MARKING - LINE 8"	FOOT	459	459	
70300260	TEMPORARY PAVEMENT MARKING - LINE 12"	FOOT	118	118	
70300280	TEMPORARY PAVEMENT MARKING - LINE 24"	FOOT	198	198	

* SPECIALTY ITEM

MODEL: Default
FILE: \\nrcs-pix\ul\B&E\BID\NTEC\Illinois\gov\PIWDOT\Documents\1\DOT_Offices\Bierfert_B\Projects\087667\CO\DATA\CAD\here\here\087667-zh-500.dgn

USER NAME = humphreysb	DESIGNED -	REVISED -
	DRAWN -	REVISED -
PLOT SCALE = 100.0000' / in.	CHECKED -	REVISED -
PLOT DATE = 12/10/2018	DATE -	REVISED -

**STATE OF ILLINOIS
DEPARTMENT OF TRANSPORTATION**

SUMMARY OF QUANTITIES

SCALE: NTS SHEET 1 OF 3 SHEETS STA. TO STA.

F.A.P. RTE.	SECTION	COUNTY	TOTAL SHEETS	SHEET NO.
103	29-1-N-TS-3	ST. CLAIR	22	3
			CONTRACT NO. 76L67	
		ILLINOIS FED. AID PROJECT		

MODEL: Default
 FILE NAME: P:\1110848E\DOT\Illinois.gov\PIWDOT\Documents\DOT Office\District 8\Projects\0876767\CADD\data\CAD\sheet\0876767-2ht-500.dgn

CODE NO.	ITEM	UNIT	TOTAL QUANTITY	CONSTR. CODE	
				FEDERAL 80% STATE 20%	TRAFFIC SIGNALS 0021 URBAN
72400100	REMOVE SIGN PANEL ASSEMBLY - TYPE A	EACH	3		3
72400200	REMOVE SIGN PANEL ASSEMBLY - TYPE B	EACH	1		1
72400310	REMOVE SIGN PANEL - TYPE 1	SQ FT	4		4
* 72400500	RELOCATE SIGN PANEL ASSEMBLY - TYPE A	EACH	3		3
* 72400600	RELOCATE SIGN PANEL ASSEMBLY - TYPE B	EACH	1		1
* 72400710	RELOCATE SIGN PANEL - TYPE 1	SQ FT	2		2
* 72400720	RELOCATE SIGN PANEL - TYPE 2	SQ FT	25		25
* 72800100	TELESCOPING STEEL SIGN SUPPORT	FOOT	24		24
* 73000100	WOOD SIGN SUPPORT	FOOT	56		56
* 73100100	BASE FOR TELESCOPING STEEL SIGN SUPPORT	EACH	2		2
* 78003100	PREFORMED PLASTIC PAVEMENT MARKING, TYPE B - LETTERS AND SYMBOLS	SQ FT	187		187
* 78003110	PREFORMED PLASTIC PAVEMENT MARKING, TYPE B - LINE 4"	FOOT	5182		5182
* 78003140	PREFORMED PLASTIC PAVEMENT MARKING, TYPE B - LINE 8"	FOOT	459		459
* 78003150	PREFORMED PLASTIC PAVEMENT MARKING, TYPE B - LINE 12"	FOOT	118		118
* 78003180	PREFORMED PLASTIC PAVEMENT MARKING, TYPE B - LINE 24"	FOOT	198		198

* SPECIALTY ITEM

CODE NO.	ITEM	UNIT	TOTAL QUANTITY	CONSTR. CODE	
				FEDERAL 80% STATE 20%	TRAFFIC SIGNALS 0021 URBAN
* 78200020	CURB REFLECTORS	EACH	101		101
* 81028320	UNDERGROUND CONDUIT, PVC, 1" DIA.	FOOT	339		339
* 81028350	UNDERGROUND CONDUIT, PVC, 2" DIA.	FOOT	193		193
* 81028360	UNDERGROUND CONDUIT, PVC, 2 1/2" DIA.	FOOT	301		301
* 81400700	HANDHOLE, PORTLAND CEMENT CONCRETE	EACH	2		2
* 81400720	DOUBLE HANDHOLE, PORTLAND CEMENT CONCRETE	EACH	1		1
* 85704804	FULL-ACTUATED CONTROLLER, STANDARD SEQUENCE IV, 8 PHASES, IN TYPE IV CABINET	EACH	1		1
* 87301245	ELECTRIC CABLE IN CONDUIT, SIGNAL NO. 14 5C	FOOT	3735		3735
* 87301255	ELECTRIC CABLE IN CONDUIT, SIGNAL NO. 14 7C	FOOT	428		428
* 87301305	ELECTRIC CABLE IN CONDUIT, LEAD-IN, NO. 14 1 PAIR	FOOT	5858		5858
* 87301900	ELECTRIC CABLE IN CONDUIT, EQUIPMENT GROUNDING CONDUCTOR, NO. 6 1C	FOOT	643		643
* 87502680	TRAFFIC SIGNAL POST, ALUMINUM 14 FT.	EACH	2		2
* 87700410	STEEL MAST ARM ASSEMBLY AND POLE, 65 FT.	EACH	2		2
* 87800100	CONCRETE FOUNDATION, TYPE A	FOOT	6		6

**STATE OF ILLINOIS
DEPARTMENT OF TRANSPORTATION**

SUMMARY OF QUANTITIES

USER NAME = humphreysb	DESIGNED -	REVISED -
	DRAWN -	REVISED -
PLOT SCALE = 100.0000' / in.	CHECKED -	REVISED -
PLOT DATE = 12/10/2018	DATE -	REVISED -

SCALE: NTS SHEET 2 OF 3 SHEETS STA. TO STA.

F.A.P. RTE.	SECTION	COUNTY	TOTAL SHEETS	SHEET NO.
103	29-1-N-TS-3	ST. CLAIR	22	4
CONTRACT NO. 76L67			ILLINOIS FED. AID PROJECT	

REV. - MS

MODEL: Default
 FILE NAME: P:\11108A\BID\NTEC\Illinois.gov\PIWDOT\Documents\DOT Office\District 8\Projects\0876167\CADD\data\CAD\sheet\0876167-zht-500.dgn

CODE NO.	ITEM	UNIT	TOTAL QUANTITY	CONSTR. CODE	
				FEDERAL 80%	STATE 20%
				TRAFFIC SIGNALS	
				0021	URBAN
*87800420	CONCRETE FOUNDATION, TYPE E 42-INCH DIAMETER	FOOT	46	46	
*87900200	DRILL EXISTING HANDHOLE	EACH	11	11	
*88040090	SIGNAL HEAD, POLYCARBONATE, LED, 1-FACE, 3-SECTION, MAST ARM MOUNTED	EACH	8	8	
*88040230	SIGNAL HEAD, POLYCARBONATE, LED, 2-FACE, 3-SECTION, BRACKET MOUNTED	EACH	2	2	
*88040250	SIGNAL HEAD, POLYCARBONATE, LED, 2-FACE, 1-3 SECTION, 1-4 SECTION, BRACKET MOUNTED	EACH	2	2	
*88200100	TRAFFIC SIGNAL BACKPLATE	EACH	8	8	
*88600100	DETECTOR LOOP, TYPE I	FOOT	3343	3343	
*89502300	REMOVE ELECTRIC CABLE FROM CONDUIT	FOOT	2326	2326	
*89502375	REMOVE EXISTING TRAFFIC SIGNAL EQUIPMENT	EACH	1	1	
89502380	REMOVE EXISTING HANDHOLE	EACH	4	4	
89502385	REMOVE EXISTING CONCRETE FOUNDATION	EACH	8	8	
X0327980	PAVEMENT MARKING REMOVAL - WATER BLASTING	SQ FT	2467	2467	
X4402805	ISLAND REMOVAL	SQ FT	2272	2272	
*X7800100	PAINT PAVEMENT MARKING - RAISED MEDIAN	SQ FT	186	186	
*X7800200	PAINT PAVEMENT MARKING CURB	FOOT	141	141	
Z0013798	CONSTRUCTION LAYOUT	L SUM	1	1	

* SPECIALTY ITEM

REV. - MS

USER NAME = humphreysb DESIGNED - DRAWN - PLOT SCALE = 100.0000' / in. CHECKED - PLOT DATE = 12/10/2018 DATE -	REVISED - REVISED - REVISED - REVISED -	STATE OF ILLINOIS DEPARTMENT OF TRANSPORTATION	SUMMARY OF QUANTITIES SCALE: NTS SHEET 3 OF 3 SHEETS STA. TO STA.	<table border="1"> <tr> <th>F.A.P. RTE.</th> <th>SECTION</th> <th>COUNTY</th> <th>TOTAL SHEETS</th> <th>SHEET NO.</th> </tr> <tr> <td>103</td> <td>29-1-N-TS-3</td> <td>ST. CLAIR</td> <td>22</td> <td>5</td> </tr> <tr> <td colspan="5">CONTRACT NO. 76L67</td> </tr> </table>	F.A.P. RTE.	SECTION	COUNTY	TOTAL SHEETS	SHEET NO.	103	29-1-N-TS-3	ST. CLAIR	22	5	CONTRACT NO. 76L67				
F.A.P. RTE.	SECTION	COUNTY	TOTAL SHEETS	SHEET NO.															
103	29-1-N-TS-3	ST. CLAIR	22	5															
CONTRACT NO. 76L67																			
			ILLINOIS FED. AID PROJECT																

MODEL: Default
 FILE: \\nlsr-pix\ill08\EBID\NTEC\Illinois\gov\PI\DOT\Documents\DOT Office\Director\B\Projects\0876\67\CADdata\CAD\sheet\087167-znt-schedule.dgn

PAVEMENT MARKING REMOVAL SCHEDULE							
LOCATION						PAVEMENT MARKING REMOVAL - WATER BLASTING (SQ FT)	NOTES
ROADWAY	STATION	OFFSET	TO	STATION	OFFSET		
IL 15	50+54.75	52.6' RT	TO	55+86.33	201.3' RT	222.0	SOLID WHITE
IL 15	51+77.36	50.3' RT	TO	55+35.93	50.4' RT	123.7	SOLID WHITE
IL 15	54+34.49	50.4' RT	TO	55+11.47	49.5' RT	25.7	SOLID WHITE
IL 15 ISLAND	54+11.47	49.5' RT	TO	54+35.93	50.4' RT	18.0	SOLID WHITE
IL 15	52+42.73	15.9' RT	TO	54+78.98	14.0' RT	79.0	SOLID WHITE
IL 15	50+54.75	37.5' LT	TO	54+57.44	140.2' LT	156.0	SOLID WHITE
IL 15	54+42.49	39.5' LT	TO	54+81.10	39.6' LT	35.7	SOLID WHITE
IL 15 ISLAND	54+42.49	39.5' LT	TO	54+72.14	66.3' LT	13.7	SOLID WHITE
IL 15 ISLAND	54+72.14	66.3' LT	TO	54+81.10	39.6' LT	9.7	SOLID WHITE
POCKET RD	54+66.10	181.6' LT	TO	54+86.54	69.7' LT	38.0	SOLID WHITE
IL 15	55+27.26	40.2' LT	TO	55+46.05	40.5' LT	27.0	SOLID WHITE
IL 15 ISLAND	55+20.72	65.7' LT	TO	55+27.26	40.2' LT	9.0	SOLID WHITE
IL 15 ISLAND	55+20.72	65.7' LT	TO	55+46.05	40.5' LT	12.0	SOLID WHITE
IL 163	55+65.00	85.2' RT	TO	55+94.92	138.8' RT	20.3	SOLID WHITE
IL 15	55+03.00	147.2' LT	TO	59+39.85	43.4' LT	160.8	SOLID WHITE
IL 15	55+76.64	5.2' LT	TO	57+49.44	7.9' LT	53.3	SOLID WHITE
IL 15	56+30.16	169.7' RT	TO	59+39.85	46.6' RT	131.3	SOLID WHITE
IL 15	55+60.82	49.6' RT	TO	56+04.25	48.8' RT	14.7	SOLID WHITE
IL 15 ISLAND	55+60.82	49.6' RT	TO	56+04.81	132.0' RT	31.7	SOLID WHITE
IL 15 ISLAND	56+04.25	48.8' RT	TO	55+90.55	109.0' RT	21.7	SOLID WHITE
IL 15	50+54.75	35.3' RT	TO	54+81.55	37.9' RT	35.7	SKIP-DASH WHITE
IL 15	52+17.42	27.5' RT	TO	54+81.55	25.9' RT	22.0	SKIP-DASH WHITE
IL 15	51+13.33	13.5' LT	TO	54+56.69	15.8' LT	28.7	SKIP-DASH WHITE
IL 15	50+54.75	25.5' LT	TO	54+56.69	27.8' LT	33.3	SKIP-DASH WHITE
IL 15	55+76.33	29.2' LT	TO	59+39.85	31.4' LT	30.3	SKIP-DASH WHITE
IL 15	55+76.49	17.2' LT	TO	59+39.85	19.4' LT	30.3	SKIP-DASH WHITE
IL 15	55+85.92	24.6' RT	TO	59+39.85	22.6' RT	29.7	SKIP-DASH WHITE
IL 15	55+85.92	36.6' RT	TO	59+39.85	34.6' RT	29.7	SKIP-DASH WHITE
IL 15	50+54.75	13.9' RT	TO	54+60.59	0.8' LT	134.7	SOLID YELLOW
IL 15	50+54.75	4.3' LT	TO	54+60.59	0.8' LT	137.3	SOLID YELLOW
IL 15	55+74.64	6.7' RT	TO	59+39.85	7.4' LT	118.3	SOLID YELLOW
IL 15	55+74.64	6.7' RT	TO	59+39.85	10.6' RT	121.3	SOLID YELLOW
IL 15	55+44.89	86.4' RT	TO	55+51.87	86.4' RT	10.0	SOLID YELLOW
POCKET RD	54+44.04	70.9' LT	TO	54+70.16	63.9' LT	50.0	STOP BAR
POCKET RD	54+72.14	66.3' LT	TO	54+98.29	73.0' LT	54.0	STOP BAR
IL 15	55+79.24	48.6' LT	TO	55+76.19	40.8' LT	18.0	STOP BAR
IL 15	55+76.19	40.8' LT	TO	55+76.64	5.2' LT	72.0	STOP BAR
IL 15	55+85.47	5.3' LT	TO	55+85.61	6.6' RT	24.0	STOP BAR
IL 15	54+57.77	2.2' RT	TO	54+57.74	14.2' RT	24.0	STOP BAR
IL 15	54+78.98	14.0' RT	TO	54+79.26	50.0' RT	72.0	STOP BAR
IL 163	55+06.69	96.9' RT	TO	55+15.62	83.6' RT	32.0	STOP BAR
IL 163	55+54.18	90.9' RT	TO	55+75.65	79.7' RT	48.0	STOP BAR
IL 163	55+91.93	75.7' RT	TO	56+14.85	77.8' RT	46.0	STOP BAR
IL 15	53+41.39	11.3' RT				15.6	LEFT TURN
IL 15	54+16.39	10.9' RT				15.6	LEFT TURN
IL 15	56+20.17	1.9' LT				15.6	LEFT TURN
IL 15	56+95.17	2.4' LT				15.6	LEFT TURN
TOTALS						2467	

USER NAME = humphreysb	DESIGNED -	REVISED -
	DRAWN -	REVISED -
PLOT SCALE = 100,0000' / in.	CHECKED -	REVISED -
PLOT DATE = 12/10/2018	DATE -	REVISED -

**STATE OF ILLINOIS
DEPARTMENT OF TRANSPORTATION**

SCHEDULE OF QUANTITIES

SCALE: NTS SHEET 1 OF 3 SHEETS STA. TO STA.

F.A.P. RTE.	SECTION	COUNTY	TOTAL SHEETS	SHEET NO.
103	29-1-N-TS-3	ST. CLAIR	22	10
CONTRACT NO. 76L67				
		ILLINOIS	FED. AID PROJECT	

PAVEMENT MARKING SCHEDULE

LOCATION						PREF PL PMT MK, TY B, LINE 4"	PREF PL PMT MK, TY B, LINE 8"	PREF PL PMT MK, TY B, LINE 12"	PREF PL PMT MK, TY B, LINE 24"	PREF PL PMT MK, TY B, LETTERS & SYMBOLS	PAINT PAVEMENT MARKING CURB	PAINT PAVEMENT MARKING - RAISED MEDIAN	NOTES
ROADWAY	STATION	OFFSET	TO	STATION	OFFSET	(FOOT)	(FOOT)	(FOOT)	(FOOT)	(SQ FT)	(FOOT)	(SQ FT)	
IL 15	50+54.75	52.5' RT	TO	55+86.33	201.3' RT	597							SOLID WHITE
IL 15	52+22.13	51.5' RT	TO	54+31.22	50.1' RT	209							SOLID WHITE
IL 15 ISLAND	54+31.22	50.1' RT	TO	55+20.74	77.2' RT		95						SOLID WHITE
IL 15	54+31.22	50.1' RT	TO	55+08.71	49.6' RT		77						SOLID WHITE
IL 15 ISLAND	54+08.71	49.6' RT	TO	55+20.74	77.2' RT		31						SOLID WHITE
IL 15	52+21.90	15.5' RT	TO	54+81.55	25.9' RT	260							SOLID WHITE
IL 15	50+54.75	36.8' LT	TO	54+57.44	140.2' LT	468							SOLID WHITE
IL 15	54+57.61	39.6' LT	TO	54+83.98	39.6' LT		27						SOLID WHITE
IL 15 ISLAND	54+57.61	39.6' LT	TO	54+73.23	81.6' LT		45						SOLID WHITE
IL 15 ISLAND	54+83.98	39.6' LT	TO	54+73.23	81.6' LT		44						SOLID WHITE
POCKET RD	54+72.46	142.5 LT	TO	54+87.78	69.1' LT	75							SOLID WHITE
IL 163	55+61.21	78.3' RT	TO	56+20.42	176.8' RT	115							SOLID WHITE
IL 15	55+03.00	147.2' LT	TO	59+39.85	43.6' LT	498							SOLID WHITE
IL 15	55+87.16	4.1' LT	TO	57+49.46	6.3' LT	163							SOLID WHITE
IL 15	56+30.16	169.7' RT	TO	59+39.85	46.7' RT	443							SOLID WHITE
IL 15	55+60.81	49.3' RT	TO	55+96.89	49.0' RT		36						SOLID WHITE
IL 15 ISLAND	55+60.81	49.3' RT	TO	55+84.60	97.3' RT		54						SOLID WHITE
IL 15 ISLAND	55+96.89	49.0' RT	TO	55+84.60	97.3' RT		50						SOLID WHITE
IL 15 ISLAND	54+57.61	39.6' LT	TO	54+63.57	45.6' LT			9					SOLID WHITE HASH
IL 15 ISLAND	54+69.75	72.3' LT	TO	54+72.79	73.7' LT			4					SOLID WHITE HASH
IL 15 ISLAND	54+72.79	73.7' LT	TO	54+75.71	71.9' LT			4					SOLID WHITE HASH
IL 15 ISLAND	54+77.60	39.7' LT	TO	54+82.65	44.8' LT			7					SOLID WHITE HASH
IL 15 ISLAND	54+65.56	53.0' RT	TO	54+67.14	56.6' RT			4					SOLID WHITE HASH
IL 15 ISLAND	54+65.56	53.0' RT	TO	54+68.62	49.9' RT			4					SOLID WHITE HASH
IL 15 ISLAND	54+82.65	55.8' RT	TO	54+88.61	49.8' RT			9					SOLID WHITE HASH
IL 15 ISLAND	55+02.65	55.7' RT	TO	55+08.71	49.6' RT			9					SOLID WHITE HASH
IL 15 ISLAND	55+66.47	61.6' RT	TO	55+69.14	62.6' RT			3					SOLID WHITE HASH
IL 15 ISLAND	55+67.40	55.3' RT	TO	55+73.36	49.2' RT			9					SOLID WHITE HASH
IL 15 ISLAND	55+70.81	70.7' RT	TO	55+73.49	71.6' RT			3					SOLID WHITE HASH
IL 15 ISLAND	55+75.28	79.6' RT	TO	55+82.64	82.0' RT			8					SOLID WHITE HASH
IL 15 ISLAND	55+79.87	88.5' RT	TO	55+83.62	89.7' RT			4					SOLID WHITE HASH
IL 15 ISLAND	55+83.62	89.7' RT	TO	55+87.06	87.6' RT			4					SOLID WHITE HASH
IL 15 ISLAND	55+82.64	82.0' RT	TO	55+89.52	77.9' RT			8					SOLID WHITE HASH
IL 15 ISLAND	55+82.86	73.7' RT	TO	55+91.98	68.2' RT			11					SOLID WHITE HASH
IL 15 ISLAND	55+85.33	64.0' RT	TO	55+94.44	58.5' RT			11					SOLID WHITE HASH
IL 15 ISLAND	55+86.53	56.0' RT	TO	55+93.35	49.1' RT			10					SOLID WHITE HASH
IL 15	50+54.75	47.1' RT	TO	52+22.13	51.5' RT	42							DOTTED LINE WHITE
IL 15	50+77.91	14.5' RT	TO	52+21.90	15.5' RT	36							DOTTED LINE WHITE
IL 15	57+49.46	6.3' LT	TO	59+09.45	8.3' LT	40							DOTTED LINE WHITE
IL 15	50+54.75	35.3' RT	TO	54+81.55	37.9' RT	110							SKIP-DASH WHITE
IL 15	52+17.42	27.5' RT	TO	54+81.55	25.9' RT	70							SKIP-DASH WHITE
IL 15	52+27.74	14.2' LT	TO	54+77.74	16.2' LT	70							SKIP-DASH WHITE
IL 15	50+54.75	25.0' LT	TO	54+77.74	28.2' LT	110							SKIP-DASH WHITE
IL 163	55+30.61	83.6' RT	TO	55+96.22	194.3' RT	40							SKIP-DASH WHITE
IL 15	55+87.16	29.2' LT	TO	59+39.85	31.5' LT	90							SKIP-DASH WHITE
IL 15	55+87.16	17.2' LT	TO	59+39.85	19.5' LT	90							SKIP-DASH WHITE
IL 15	55+90.22	25.1' RT	TO	59+39.85	22.8' RT	90							SKIP-DASH WHITE
IL 15	55+90.22	37.1' RT	TO	59+39.85	34.8' RT	90							SKIP-DASH WHITE
IL 15	50+54.75	13.7' RT	TO	54+60.59	1.1' LT	404							SOLID YELLOW
IL 15	50+54.75	3.8' LT	TO	54+60.59	1.1' LT	409							SOLID YELLOW
IL 15	55+82.80	9.6' RT	TO	59+39.85	7.4' LT	363							SOLID YELLOW
IL 15	55+82.80	9.6' RT	TO	59+39.85	10.7' RT	300							SOLID YELLOW
POCKET RD	54+50.58	71.6' LT	TO	54+67.69	65.4' LT			18					STOP BAR
POCKET RD	54+77.12	66.4' LT	TO	54+98.56	71.9' LT			23					STOP BAR
IL 15	55+87.16	6.7' RT	TO	55+87.16	43.8' LT			51					STOP BAR
IL 15	54+46.89	2.4' RT	TO	54+46.89	14.0' RT			12					STOP BAR
IL 15	54+81.55	13.8' RT	TO	54+81.55	49.8' RT			36					STOP BAR
IL 163	54+89.17	80.0' RT	TO	54+94.71	67.0' RT			14					STOP BAR
IL 163	55+50.36	83.7' RT	TO	55+71.96	73.0' RT			24					STOP BAR
IL 163	55+90.35	74.6' RT	TO	56+09.18	79.4' RT			20					STOP BAR
IL 15	52+42.76	11.9' RT							15.6				LEFT TURN
IL 15	52+44.25	55.6' RT							15.6				LEFT TURN
IL 15	53+30.74	11.2' RT							15.6				LEFT TURN
IL 15	53+31.23	54.6' RT							15.6				LEFT TURN
IL 15	54+18.38	10.6' RT							15.6				LEFT TURN
IL 15	54+18.77	54.0' RT							15.6				LEFT TURN
IL 15	56+15.66	1.3' LT							15.6				LEFT TURN
IL 15	57+28.21	1.9' LT							15.6				LEFT TURN
POCKET RD	1+37.62	11.0' LT							15.6				LEFT TURN
POCKET RD	0+93.96	10.5' LT							15.6				LEFT TURN
IL 163	11+22.45	11.1' LT							15.6				LEFT TURN
IL 163	11+89.74	11.0' LT							15.6				LEFT TURN
IL 15 ISLAND	54+70.00	57.0' LT									4		NW ISLAND
IL 15 ISLAND	55+00.00	63.0' RT									26		SW ISLAND
IL 15 ISLAND	55+79.00	66.0' RT									3		SE ISLAND
IL 15	54+59.37		TO	53+87.37							48		W MEDIAN NOSERAMP
IL 15	55+84.23	8.9' RT	TO	56+56.23	8.9' RT						48		E MEDIAN NOSERAMP
IL 163	10+84.17		TO	11+06.10							12		S MEDIAN NOSERAMP
TOTALS						5182	459	118	198	187	141	186	

MODEL: Default
FILE: \\u0084EBIDNTEC\Illinois\gov\pww\DOT\Documents\DOT Office\DI\erict 8\Projects\0876\67\COData\CAD\here\087167-znt-schedule.dgn

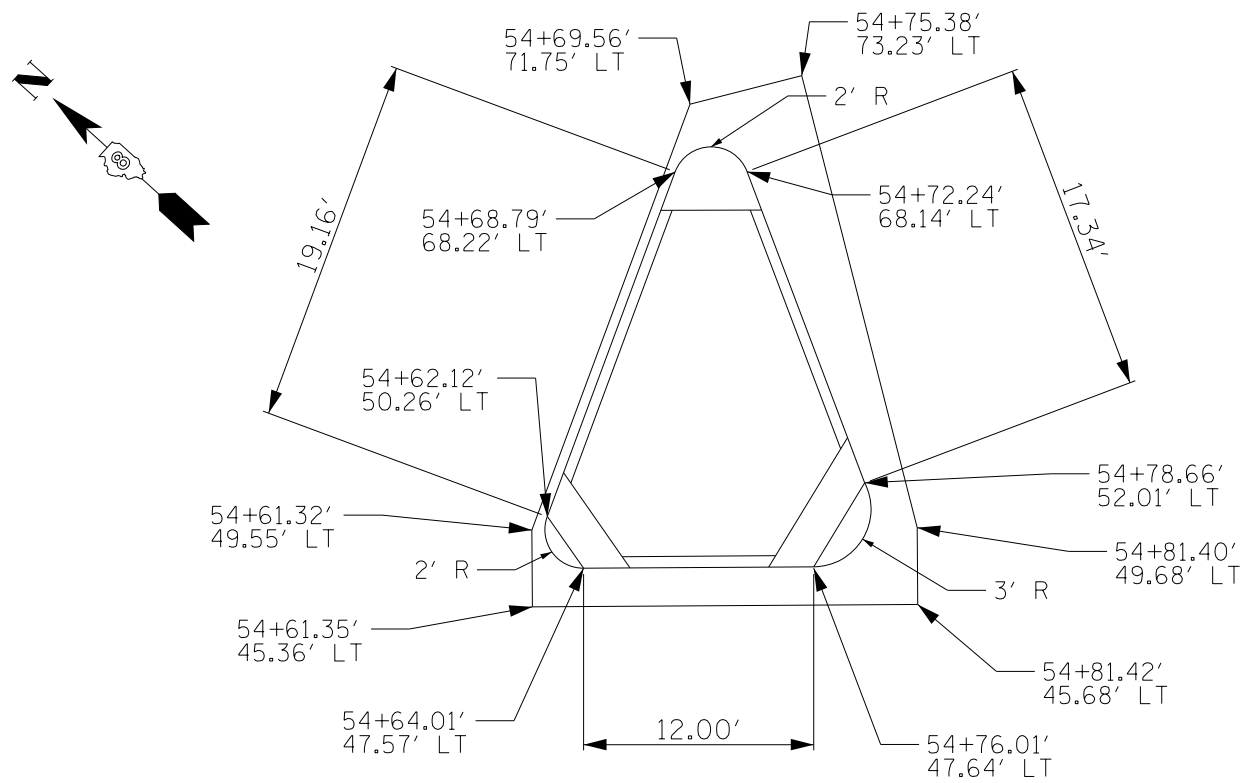
USER NAME = humphreysb	DESIGNED -	REVISED -
	DRAWN -	REVISED -
PLOT SCALE = 100.0000' / in.	CHECKED -	REVISED -
PLOT DATE = 12/10/2018	DATE -	REVISED -

STATE OF ILLINOIS
DEPARTMENT OF TRANSPORTATION

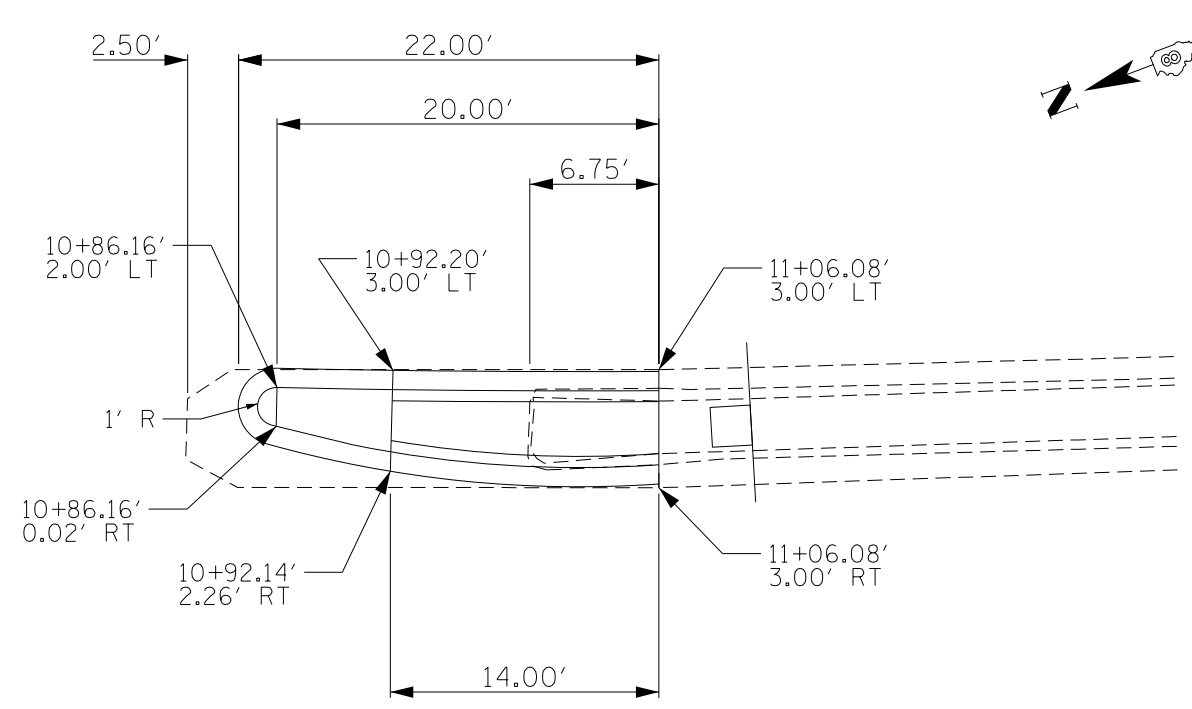
SCHEDULE OF QUANTITIES

SCALE: NTS SHEET 2 OF 3 SHEETS STA. TO STA.

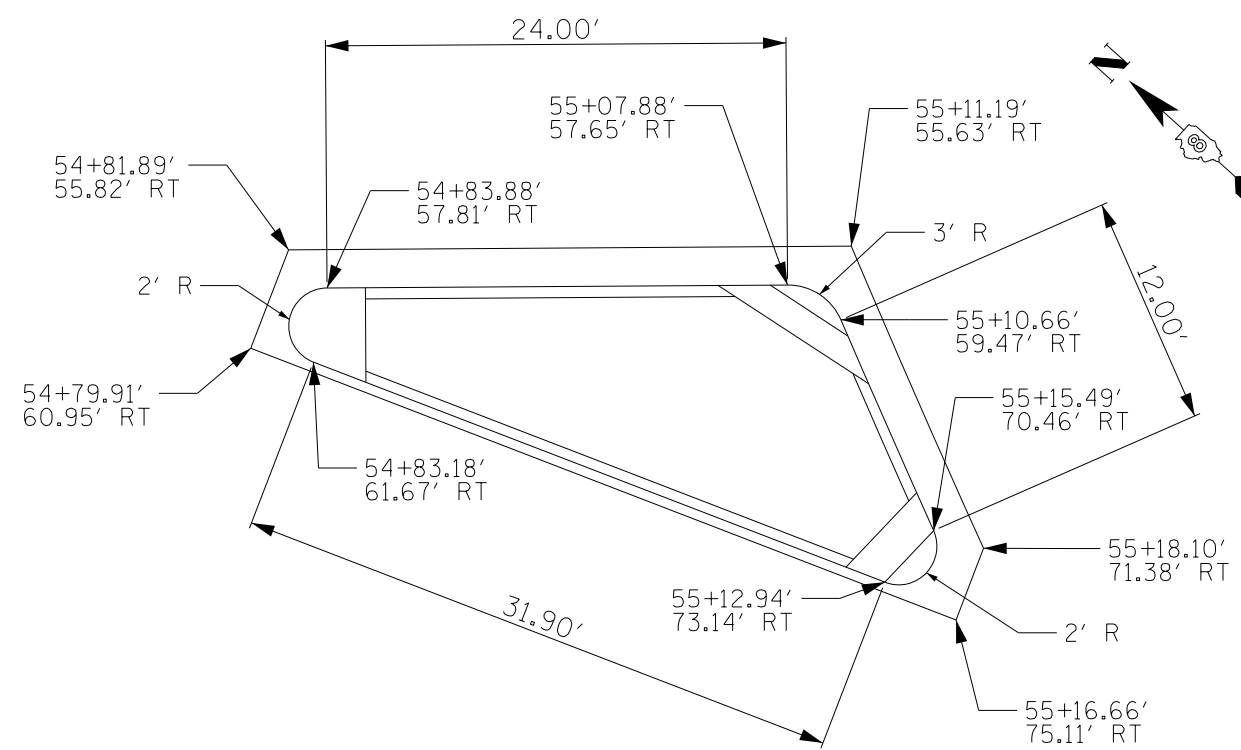
F.A.P. RTE.	SECTION	COUNTY	TOTAL SHEETS	SHEET NO.
103	29-1-N-TS-3	ST. CLAIR	22	11
CONTRACT NO. 76L67				
ILLINOIS		FED. AID PROJECT		



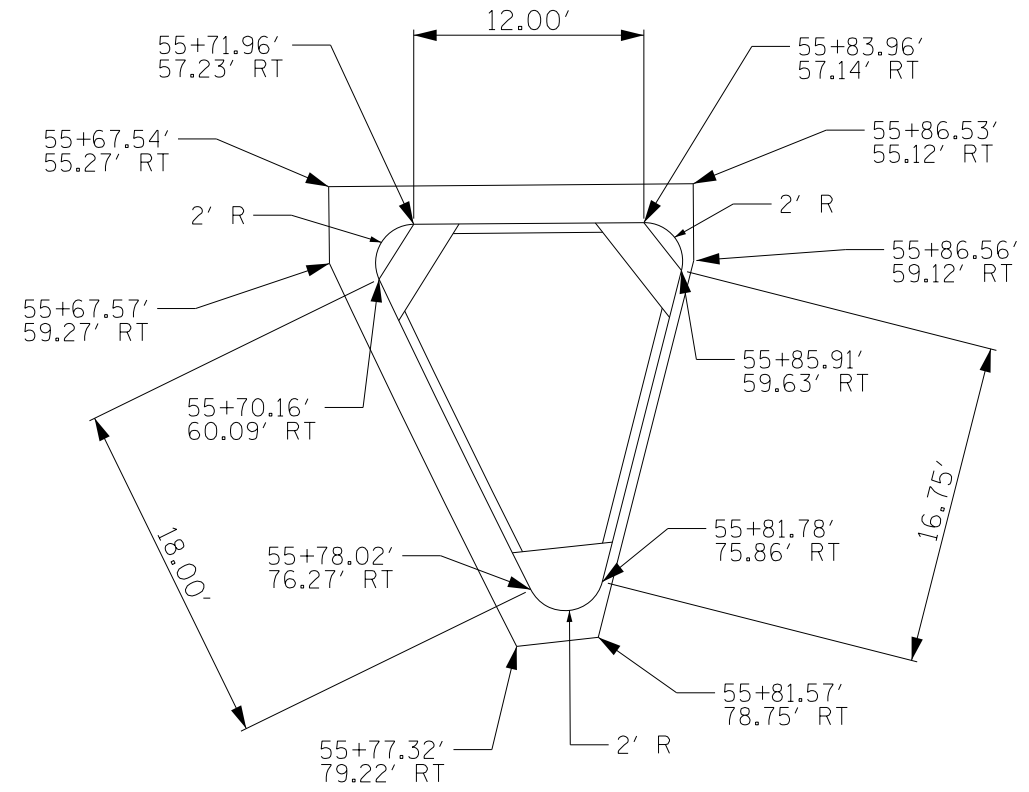
NORTHWEST ISLAND (IL 15)



SOUTH MEDIAN (IL 163)



SOUTHWEST ISLAND (IL 15)



SOUTHEAST ISLAND (IL 15)



MODEL: Default
 FILE: \\nrc\p\1108\B&E\ID\NTEC\Illinois\gov\PI\DOT\Documents\DOT Office\BIDirect\B\Projects\0876\67\COData\CAD\Sheet\0876\2ht-spln.dgn

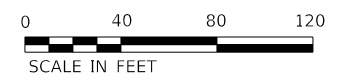
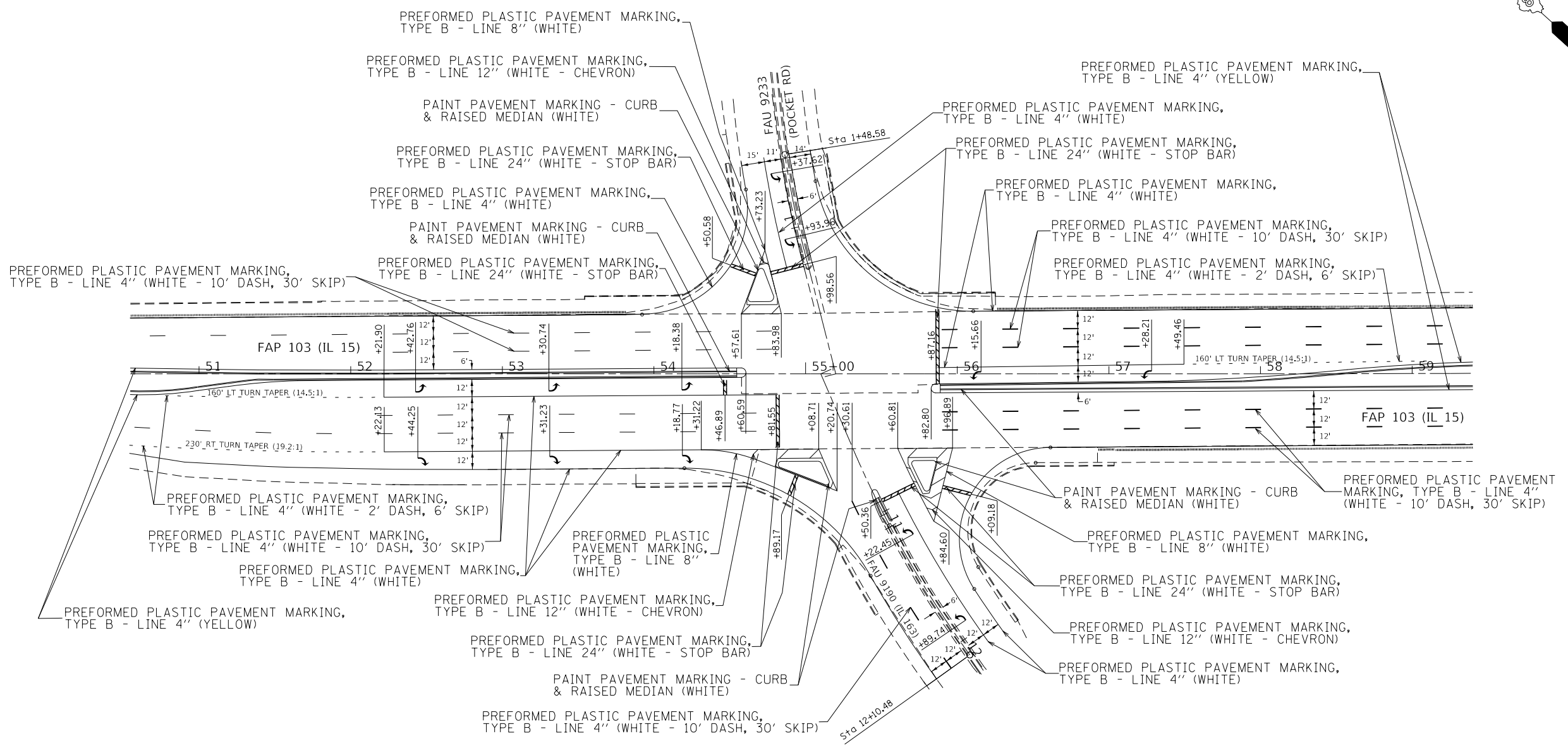
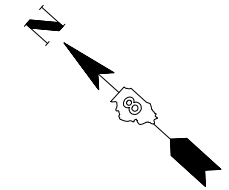
USER NAME = humphreysb	DESIGNED -	REVISED -
	DRAWN -	REVISED -
PLOT SCALE = 100.0000' / in.	CHECKED -	REVISED -
PLOT DATE = 12/10/2018	DATE -	REVISED -

**STATE OF ILLINOIS
DEPARTMENT OF TRANSPORTATION**

**MEDIAN & ISLAND
DETAIL SHEET**

SCALE: 1" = 5' SHEET 1 OF 1 SHEETS STA. TO STA.

F.A.P. RTE.	SECTION	COUNTY	TOTAL SHEETS	SHEET NO.
103	29-1-N-TS-3	ST. CLAIR	22	14
CONTRACT NO. 76L67				
ILLINOIS FED. AID PROJECT				



MODEL: Default
 FILE: \\nrcs\p10\1108\B&E\ID\NTEC\Illinois\gov\PIWDOT\Documents\1\DOT_Offices\Director\B\Projects\08761671\CADD\data\CAD\sheet\087167-zht-gen\mte.dgn

USER NAME = humphreysb	DESIGNED -	REVISED -
	DRAWN -	REVISED -
PLOT SCALE = 100,0000' / in.	CHECKED -	REVISED -
PLOT DATE = 12/10/2018	DATE -	REVISED -

STATE OF ILLINOIS
DEPARTMENT OF TRANSPORTATION

PAVEMENT MARKING PLAN			
SCALE: 1" = 40'	SHEET 1	OF 1 SHEETS	STA. 50+54.75 TO STA. 59+39.85

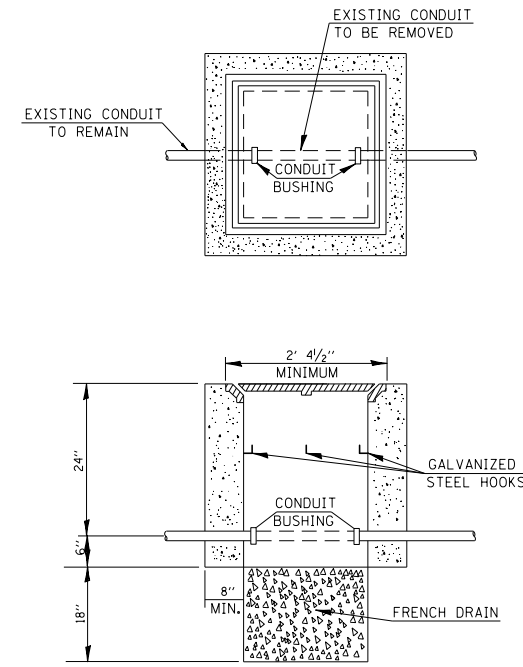
F.A.P. RTE.	SECTION	COUNTY	TOTAL SHEETS	SHEET NO.
103	29-1-N-TS-3	ST. CLAIR	22	15
CONTRACT NO. 76L67			ILLINOIS FED. AID PROJECT	

TRAFFIC SIGNALS LEGEND

GSC	GALVANIZED STEEL CONDUIT
PVC	POLYVINYL CHLORIDE CONDUIT
	EXISTING SIGNAL & POST
	EXISTING SIGNAL WITH BACKPLATE
	EXISTING TRAFFIC SIGNAL MAST ARM
	EXISTING HANDHOLE
	EXISTING DOUBLE HANDHOLE
	EXISTING HEAVEY DUTY HANDHOLE
	EXISTING DETECTOR LOOP
	EXISTING CONTROLLER
	EXISTING STREET NAME SIGN/TRAFFIC SIGN
	EXISTING SERVICE INSTALLATION
	EXISTING GALVANIZED STEEL CONDUIT
	PROPOSED SIGNAL HEAD WITH BACKPLATE, MAST ARM MOUNTED
	PROPOSED HANDHOLE
	PROPOSED DOUBLE HANDHOLE
	PROPOSED HEAVY DUTY HANDHOLE
	PROPOSED DETECTOR LOOP
	PROPOSED CONTROLLER
	PROPOSED PEDESTRIAN PUSHBUTTON DETECTOR
	PROPOSED SIGNAL HEAD, PEDESTRIAN
	PROPOSED CONDUIT: TYPE, SIZE SPECIFIED
	PROPOSED STREET NAME SIGN/TRAFFIC SIGN
	PROPOSED SERVICE INSTALLATION
	PROPOSED SIGNAL & POST
	PROPOSED SIGNAL WITH BACKPLATE

ELECTRICAL GENERAL NOTES

- ALL VEHICLE AND PEDESTRIAN SIGNAL HEADS SHALL HAVE 12" SECTIONS. MOUNTING HARDWARE SHALL BE UNPAINTED ALUMINUM. ALL BOLTS, SCREWS, NUTS AND WASHERS SHALL BE STAINLESS STEEL. ANTI-SEIZE PASTE COMPOUND SHALL BE USED ON ALL MOUNTING HARDWARE FIELD CONNECTIONS.
- BACKPLATES SHALL BE ABS PLASTIC.
- THE CONTROLLER CABINET SHALL BE UNPAINTED ALUMINUM.
- THE LOCATION OF MAST ARM SUPPORTS SHALL BE APPROVED BY THE ENGINEER BEFORE FOUNDATIONS ARE CONSTRUCTED. MAST ARM POLES SHALL BE LOCATED A MINIMUM OF 10 FEET FROM THE EDGE OF PAVEMENT OR 2 FEET FROM THE EDGE OF SHOULDER, WHICHEVER DISTANCE IS GREATER. IN CURBED SECTIONS, THE MAST ARM POLES SHALL BE LOCATED A MINIMUM OF 5 FEET FROM THE FACE OF THE CURB. THESE DISTANCES ARE TO THE NEAR FACE OF THE MAST ARM POLE.
- ALL TRAFFIC SIGNAL CABLES SHALL BE #14 AWG STRANDED COPPER UNLESS OTHERWISE SPECIFIED. TERMINAL ENDS SHALL HAVE CRIMPED-ON RING TONGUE CONNECTORS.
- THE LOCATION OF ALL DETECTOR LOOPS SHALL BE APPROVED BY THE ENGINEER BEFORE ANY SLOTS ARE SAWED IN THE PAVEMENT.
- DETECTOR LOOP LEAD-IN SPLICES SHALL BE MADE IN A HANDHOLE PER SECTION 873 OF THE STANDARD SPECIFICATIONS. CONDUCTORS SHALL BE SPLICED IN A RIGID MOLD FILLED WITH NON-HARDENING EPOXY FILLER. ROSIN-CORE SOLDER SHALL BE USED.
- CALL DELAY SHALL NOT FUNCTION WHEN THE RELATED PHASES ARE IN THE GREEN MODE.
- CALL CARRY-OVER SHALL FUNCTION ONLY WHEN THE RELATED PHASES ARE IN THE GREEN MODE.
- ALL INDUCTIVE LOOP DETECTORS SUPPLIED FOR THIS PROJECT SHALL HAVE THE CAPACITY OF OPERATING WITH BOTH DELAY AND EXTENSION MODES ACTIVE, IF A TIME SETTING IS PROGRAMMED. THEY SHALL BE RACK MOUNTED.
- ALL HANDHOLES SHALL BE CAST-IN-PLACE PORTLAND CEMENT CONCRETE (PER ARTICLE 814.03(b)). THE CAST IN PLACE LEGEND IN THE COVER SHALL BE "TRAFFIC SIGNALS". SLOPE HANDHOLE COVERS TO MATCH PROPOSED GRADE ELEVATIONS.
- LOCATE UNDERGROUND CABLES PRIOR TO ATTEMPTING TO CONSTRUCT THIS PROJECT.
- ABANDON EXISTING CONDUIT AND CABLES IN PLACE.



DETAIL
HANDHOLE TO INTERCEPT EXISTING CONDUIT *

* NOT A PAY ITEM

NOTES:

- REMOVAL OF EXISTING CONDUIT FROM THE HANDHOLE AND THE INSTALLATION OF THE CONDUIT BUSHING SHALL BE INCIDENTAL TO THE HANDHOLE.
- THE CONTRACTOR SHALL BE PAID TO LOCATE THE CONDUIT UNDER OTHER PROVISIONS OF THIS CONTRACT. SEE LOCATING UNDERGROUND CABLE IN THE STANDARD SPECIFICATIONS.

MODEL: Default
FILE: \\nashpc-pw\illinois\B&E\ID\NETC\Illinois\gov\PI\DOT\Documents\DOT Office\IDirect\B\Projects\0876167\CAD\data\CAD\sheet\0876167-ET-01.dgn

USER NAME = humphreysb	DESIGNED -	REVISED -
	DRAWN -	REVISED -
PLOT SCALE = 40.0000 ' / in.	CHECKED -	REVISED -
PLOT DATE = 12/10/2018	DATE -	REVISED -

STATE OF ILLINOIS
DEPARTMENT OF TRANSPORTATION

ELECTRICAL GENERAL NOTES, TRAFFIC SIGNAL LEGEND & DETAILS

SCALE: SHEET TS01 OF 6 SHEETS STA. TO STA.

F.A.U. RTE.	SECTION	COUNTY	TOTAL SHEETS	SHEET NO.
103	29-1-N-TS-3	ST. CLAIR	22	16
CONTRACT NO. 76L67			ILLINOIS FED. AID PROJECT	

DETECTOR LOOP REQUIREMENTS AND CALCULATIONS
FOR IL 15 (MO. AVE.) & IL 163 (POCKET RD.)

SCHEDULE OF QUANTITIES			
CODE NO.	ITEM	UNIT	QTY.
72400720	RELOCATE SIGN PANEL - TYPE 2	SQ FT	25
81028320	UNDERGROUND CONDUIT, PVC, 1" DIA.	FOOT	339
81028350	UNDERGROUND CONDUIT, PVC, 2" DIA.	FOOT	193
81028360	UNDERGROUND CONDUIT, PVC, 2 1/2" DIA.	FOOT	301
81400700	HANDHOLE, PORTLAND CEMENT CONCRETE	EACH	2
81400720	DOUBLE HANDHOLE, PORTLAND CEMENT CONCRETE	EACH	1
85704804	FULL-ACTUATED CONTROLLER, STANDARD SEQUENCE IV, 8 PHASES, IN TYPE IV CABINET	EACH	1
87301245	ELECTRIC CABLE IN CONDUIT, SIGNAL NO. 14 5C	FOOT	3735
87301255	ELECTRIC CABLE IN CONDUIT, SIGNAL NO. 14 7C	FOOT	428
87301305	ELECTRIC CABLE IN CONDUIT, LEAD-IN, NO. 14 1 PAIR	FOOT	5858
87301900	ELECTRIC CABLE IN CONDUIT, EQUIPMENT GROUNDING CONDUCTOR, NO. 6 1C	FOOT	643
87502680	TRAFFIC SIGNAL POST, ALUMINUM 14 FT.	EACH	2
87700410	STEEL MAST ARM ASSEMBLY AND POLE, 65 FT.	EACH	2
87800100	CONCRETE FOUNDATION, TYPE A	FOOT	6
87800420	CONCRETE FOUNDATION, TYPE E 42-INCH DIAMETER	FOOT	46
87900200	DRILL EXISTING HANDHOLE	EACH	11
88040090	SIGNAL HEAD, POLYCARBONATE, LED, 1-FACE, 3-SECTION, MAST ARM MOUNTED	EACH	8
88040230	SIGNAL HEAD, POLYCARBONATE, LED, 2-FACE, 3-SECTION, BRACKET MOUNTED	EACH	2
88040250	SIGNAL HEAD, POLYCARBONATE, LED, 2-FACE, 1-3-SECTION, 1-4-SECTION, BRACKET MOUNTED	EACH	2
88200100	TRAFFIC SIGNAL BACKPLATE	EACH	8
88600100	DETECTOR LOOP, TYPE I	FOOT	3343
89502300	REMOVE ELECTRIC CABLE FROM CONDUIT	FOOT	2326
89502375	REMOVE EXISTING TRAFFIC SIGNAL EQUIPMENT	EACH	1
89502380	REMOVE EXISTING HANDHOLE	EACH	4
89502385	REMOVE EXISTING CONCRETE FOUNDATION	EACH	8

LOOP#	PHASE #	LOOP SIZE (FT. X FT.)	REQUIRED # OF TURNS	CALCULATED INDUCTANCE MICROHENRIES	CALCULATED RESISTANCE OHMS
1. EB CCO 1	6	6' x 6'	6	350.36	2.53
2. EB CCO 2	6	6' x 6'	6	347.72	2.47
3. EB CCO 3	6	6' x 6'	6	345.08	2.41
4. EB LT CD	1	6' x 50'(0)	3-6-3	808.44	2.10
5. EB THRU 1 CD	6	6' x 50'(0)	3-6-3	805.80	2.04
6. EB THRU 2 CD	6	6' x 50'(0)	3-6-3	802.94	1.98
7. EB THRU 3 CD	6	6' x 50'(0)	3-6-3	800.08	1.91
8. EB RT CD	6	6' x 50'(0)	3-6-3	796.34	1.83
9. NB CCO 1	3	6' x 6'	3-6-3	876.20	3.64
10. NB CCO 2	3	6' x 6'	3-6-3	873.34	3.58
11. NB LT CD	3	6' x 50'(0)	3-6-3	850.90	3.07
12. NB THRU CD	3	6' x 50'(0)	3-6-3	850.24	3.05
13. NB RT CD	3	6' x 50'(0)	3-6-3	839.46	2.81
14. WB CCO 1	2	6' x 6'	7	519.15	3.90
15. WB CCO 2	2	6' x 6'	7	516.51	3.84
16. WB CCO 3	2	6' x 6'	7	513.65	3.78
17. WB LT CD	5	6' x 50'(0)	3-6-3	874.44	3.60
18. WB THRU 1 CD	2	6' x 50'(0)	3-6-3	872.46	3.56
19. WB THRU 2 CD	2	6' x 50'(0)	3-6-3	869.82	3.50
20. WB THRU 3 CD	2	6' x 50'(0)	3-6-3	866.52	3.42
21. WB RT CD	2	6' x 50'(0)	3-6-3	864.32	3.37
22. SB CCO	4	6' x 6'	6	344.64	2.40
23. SB LT CD	4	6' x 50'(0)	3-6-3	88.30	3.81
24. SB THRU CD	4	6' x 50'(0)	3-6-3	880.82	3.75
25. SB RT CD	4	6' x 50'(0)	3-6-4	876.20	3.64

THE ABOVE VALUES ARE CALCULATED OF COMBINED LOOP AND LEAD-IN INDUCTANCE AND RESISTANCE. ACTUAL MEASURED VALUES SHOULD BE WITHIN +/- 20% OF THESE VALUES.

MODEL: Default
FILE NAME: \\u1084EBID\INTEG\Illinois.gov\PI\DOT\Documents\DOT - Office\District 8\Projects\10876167\CAD\Drawings\CAD\Drawings\10876167-shr-ts.dgn

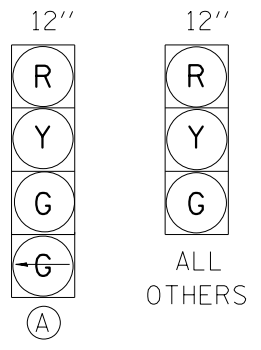
USER NAME = humphreysb	DESIGNED -	REVISED -
DRAWN -	REVISIONS -	
PLOT SCALE = 40.0000' / in.	CHECKED -	REVISED -
PLOT DATE = 12/10/2018	DATE -	REVISED -

STATE OF ILLINOIS
DEPARTMENT OF TRANSPORTATION

TRAFFIC SIGNAL SCHEDULE OF QUANTITIES
DETECTOR LOOP REQUIREMENTS AND CALCULATIONS

F.A.U. RTE.	SECTION	COUNTY	TOTAL SHEETS	SHEET NO.
103	29-1-N-TS-3	ST. CLAIR	22	17
CONTRACT NO. 76L67			ILLINOIS FED. AID PROJECT	

SCALE: SHEET TS02 OF 6 SHEETS STA. TO STA.



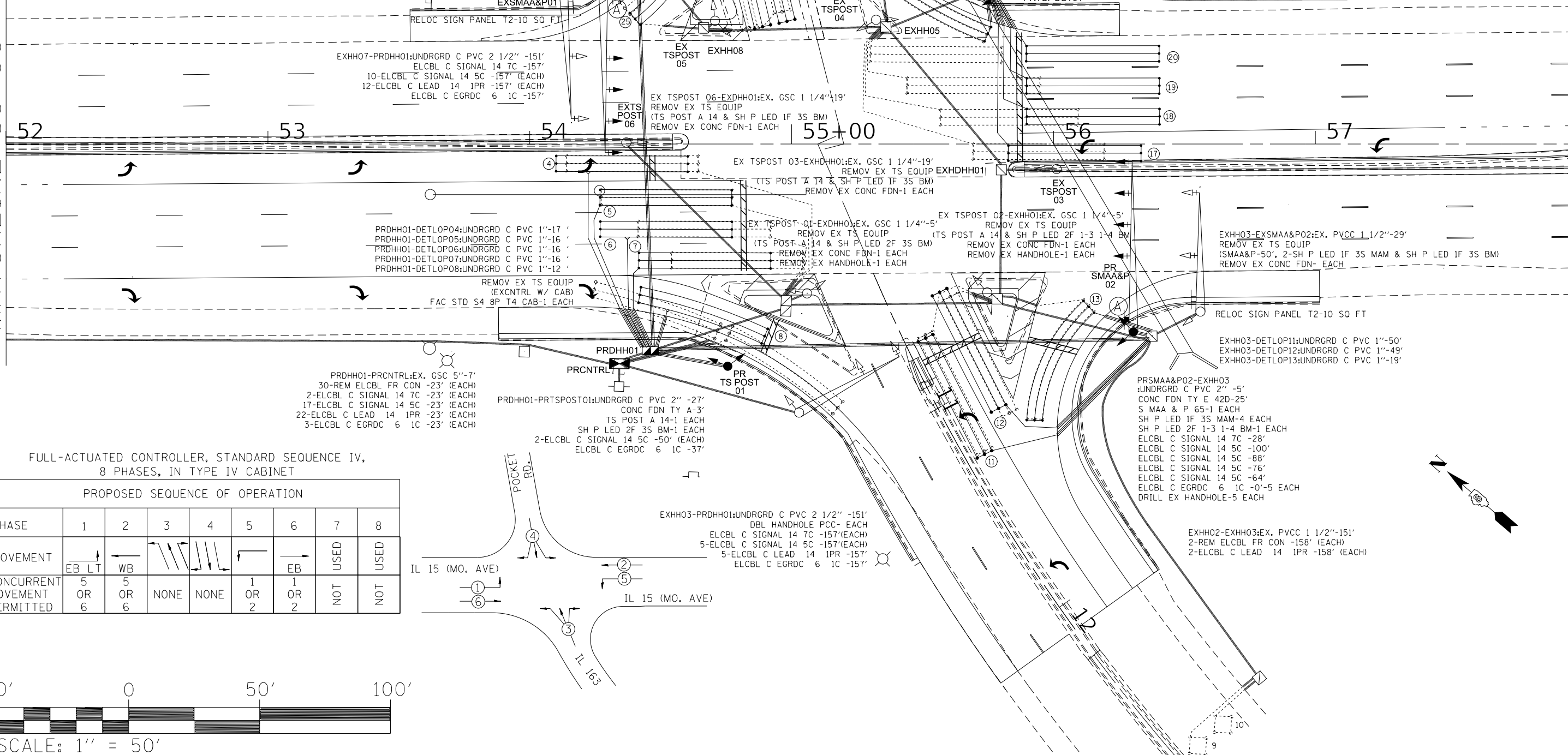
ALL OTHERS

MATCHLINE 1+25

PROPOSED TRAFFIC SIGNAL FACES

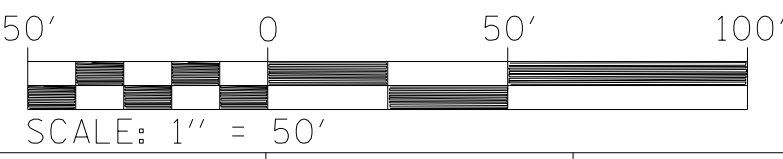
MATCHLINE 58+00

MATCHLINE 58+00



FULL-ACTUATED CONTROLLER, STANDARD SEQUENCE IV, 8 PHASES, IN TYPE IV CABINET

PROPOSED SEQUENCE OF OPERATION								
PHASE	1	2	3	4	5	6	7	8
MOVEMENT	EB LT	WB	EB	WB	EB	WB	USED	USED
CONCURRENT MOVEMENT PERMITTED	5 OR 6	5 OR 6	NONE	NONE	1 OR 2	1 OR 2	NOT	NOT



USER NAME = humphreysb	DESIGNED -	REVISED -
PLOT SCALE = 40.0000 "/td> <td>DRAWN -</td> <td>REVISED -</td>	DRAWN -	REVISED -
PLOT DATE = 12/10/2018	CHECKED -	REVISED -
	DATE -	REVISED -

STATE OF ILLINOIS
DEPARTMENT OF TRANSPORTATION

IL 015 (MO. AVE.) & POCKET RD/IL 163
TRAFFIC SIGNALS PLANS 1 OF 2

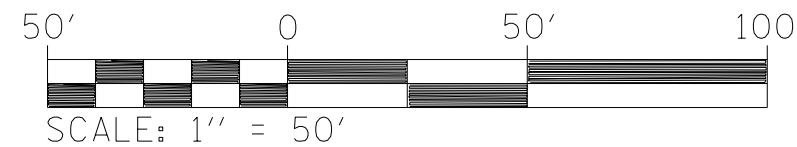
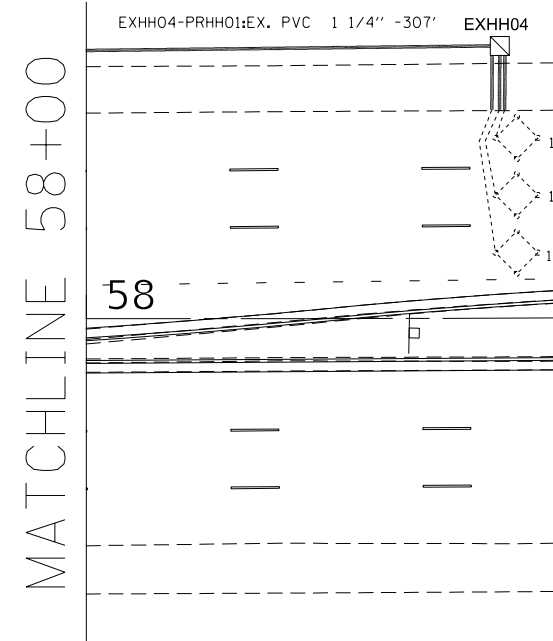
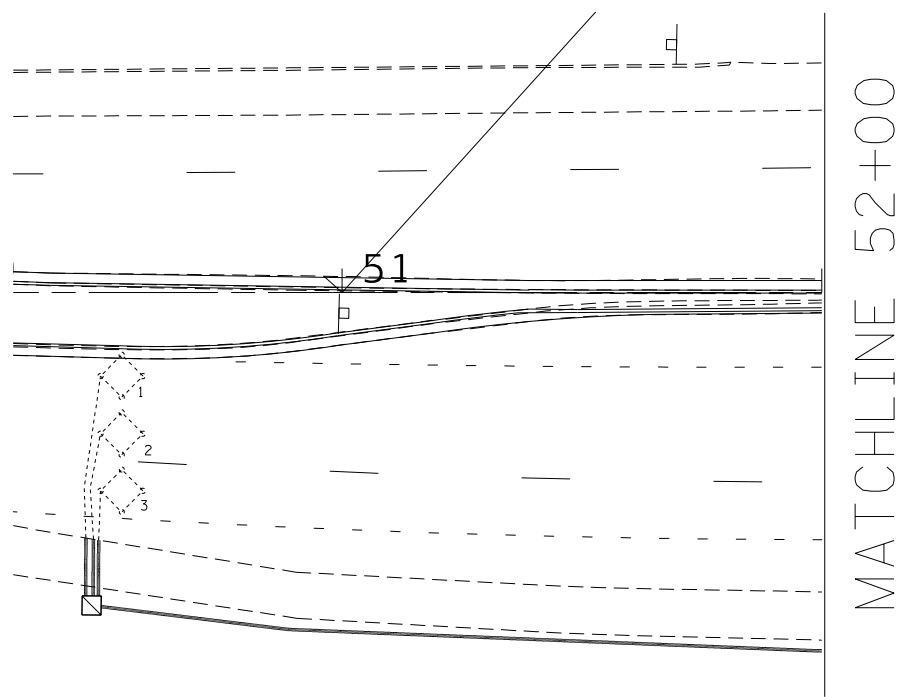
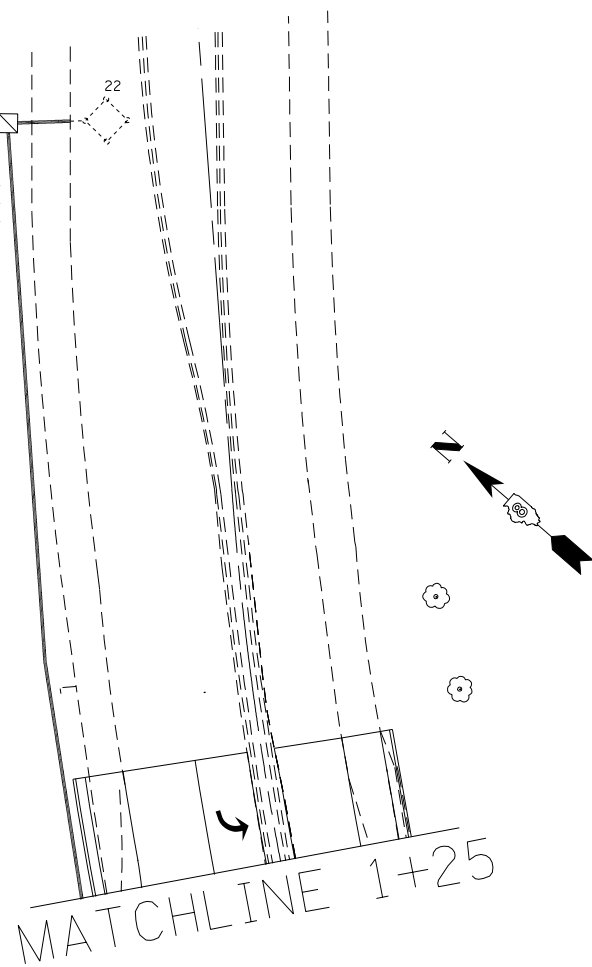
SCALE: SHEET TS03 OF 6 SHEETS STA. TO STA.

F.A.U. RTE. 103	SECTION 29-1-N-TS-3	COUNTY ST. CLAIR	TOTAL SHEETS 22	SHEET NO. 18
ILLINOIS FED. AID PROJECT			CONTRACT NO. 76L67	

MODEL: Default FILE: \\mhc\p\1108\B&E\ID\TCE\Illinois\gov\p\1108\B&E\ID\TCE\Documents\1108_TrafficSignalPlans\1108-TS-3.dgn

MODEL: Default
 FILE: \\mhc-pw\il08\EBID\NTEC\Illinois\gov\PWIDOT\Documents\DOT Offices\Director\Projects\0876167\CAD\data\CAD\sheet\0876167-21-1.dgn

EXHH06-EXHH07:EX. PVCC 1 1/2''-199'
 REM ELCBL FR CON -205'
 ELCBL C LEAD 14 1PR -205'



USER NAME = humphreysb	DESIGNED -	REVISED -
	DRAWN -	REVISED -
PLOT SCALE = 40.0000 ' / in.	CHECKED -	REVISED -
PLOT DATE = 12/10/2018	DATE -	REVISED -

**STATE OF ILLINOIS
 DEPARTMENT OF TRANSPORTATION**

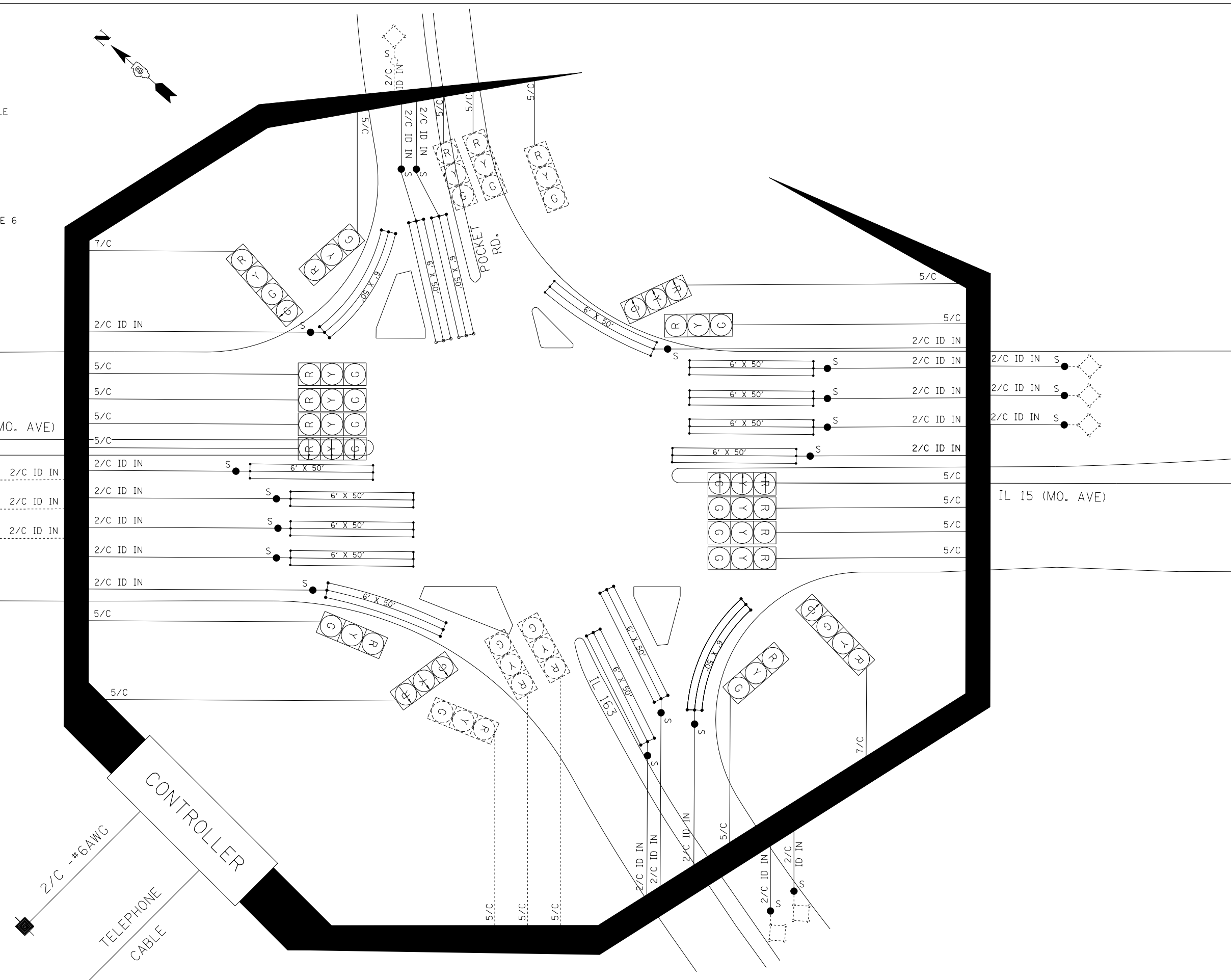
**IL 015 (MO. AVE.) & POCKET RD/IL 163
 TRAFFIC SIGNALS PLANS 2 OF 2**

SCALE: SHEET TS04 OF 6 SHEETS STA. TO STA.

F.A.U. RTE.	SECTION	COUNTY	TOTAL SHEETS	SHEET NO.
103	29-1-N-TS-3	ST. CLAIR	22	19
CONTRACT NO. 76L67				
ILLINOIS FED. AID PROJECT				

CABLE DIAGRAM LEGEND

- ELECTRIC CABLE IN CONDUIT
- EXISTING ELECTRIC CABLE IN CONDUIT
- S CABLE SPLICE (SEE GENERAL NOTES)
- 2/C INDICATES NUMBER OF CONDUCTORS IN CABLE
- ID IN ELECTRIC CABLE LEAD-IN, 1 PAIR
- CD CALL DELAY (SEE GENERAL NOTES)
- CCO CALL CARRY OVER (SEE GENERAL NOTES)
- SERVICE INSTALLATION
- #6 INDICATES AMERICAN WIRE GAUGE (AWG) SIZE 6 CONDUCTORS (SEE GENERAL NOTES)



MODEL: Default
 FILE: \\nrcs-pw\il015\B&E\ID\NETC\Illinois.gov\PW\DOT\Documents\DOT - Offices\Director B\Projects\0876167\CADD\data\CAD\sheet\0876167-rl-ts-03.dgn

USER NAME = humphreysb	DESIGNED -	REVISED -
	DRAWN -	REVISED -
PLOT SCALE = 40.0000 ' / in.	CHECKED -	REVISED -
PLOT DATE = 12/10/2018	DATE -	REVISED -

**STATE OF ILLINOIS
 DEPARTMENT OF TRANSPORTATION**

**IL 015 (MO. AVE.) & POCKET RD/IL 163
 CABLE DIAGRAM**

SCALE: SHEET TS05 OF 6 SHEETS STA. TO STA.

F.A.U. RTE. 103	SECTION 29-1-N-TS-3	COUNTY ST. CLAIR	TOTAL SHEETS 22	SHEET NO. 20
CONTRACT NO. 76L67			ILLINOIS FED. AID PROJECT	

Center S 1/2, Section 29, T 2 N, R 9 W, 3rd P.M.

FORM NO. B. D. 137 REV. 9-60

Sh. 1 of 1 Sh.

BRIDGE FOUNDATION BORING LOG

PROJECT _____ BRIDGE Traffic Signals Date 4-13-78
 ROUTE FAI 270 I11. 15 & I11. 163 Bored By R. Bleier
 SEC. 82-4 STA. _____ Checked By R. Nebelsick
 COUNTY St. Clair

Boring No.	Station	Offset	Elevation	N	Qu t/s.f.	w (%)	Surface Water El.	Groundwater El. at Completion	After _____ Hours	Elevation	N	Qu t/s.f.	w (%)
			419.8										
			415.8+	3	0.1	23							
			412.6	6	0.5	31							
			407.6	8	N.C.	-							
			405.8+	6	0.9	35							
			399.1	6	N.C.	-							
				10	N.C.	-							
				5	N.C.	-							

N - Standard Penetration Test - Blows per foot to drive 2" O.D. Split Spoon Sampler 12" with 140# hammer falling 30".
 Qu - Unconfined Compressive Strength - t/sf
 w - Water Content - percentage of oven dry weight - %
 Type failure:
 B - Bulge Failure
 S - Shear Failure
 E - Estimated Value
 P - Penetrometer

NW QUADRANT

Center S 1/2, Section 29, T 2 N, R 9 W, 3rd P.M.

FORM NO. B. D. 137 REV. 9-60

Sh. 1 of 1 Sh.

BRIDGE FOUNDATION BORING LOG

PROJECT _____ BRIDGE Traffic Signals Date 4-13-78
 ROUTE FAI 270 I11. 15 & I11. 163 Bored By R. Bleier
 SEC. 82-4 STA. _____ Checked By R. Nebelsick
 COUNTY St. Clair

Boring No.	Station	Offset	Elevation	N	Qu t/s.f.	w (%)	Surface Water El.	Groundwater El. at Completion	After _____ Hours	Elevation	N	Qu t/s.f.	w (%)
			420.0										
			416.0+	5	0.1	20							
			413.5+	7	1.0	31							
			408.5+	7	0.2	20							
			408.5+	6	0.2	33							
			403.5 F.W.										
			401.7	11	N.C.	-							

N - Standard Penetration Test - Blows per foot to drive 2" O.D. Split Spoon Sampler 12" with 140# hammer falling 30".
 Qu - Unconfined Compressive Strength - t/sf
 w - Water Content - percentage of oven dry weight - %
 Type failure:
 B - Bulge Failure
 S - Shear Failure
 E - Estimated Value
 P - Penetrometer

SE QUADRANT

MODEL: Default FILE: \\mspc-pw\pub\B&E\BIDD\TEC\Illinois\gov\p\BIDD\Documents\BIDD\Office\BIDD\T\CD\DATA\CD\Sheet\0876167-1-1-1.dgn

USER NAME = humphreysb	DESIGNED -	REVISED -
PLOT SCALE = 40,0000 1/4 in.	DRAWN -	REVISED -
PLOT DATE = 12/10/2018	CHECKED -	REVISED -
	DATE -	REVISED -

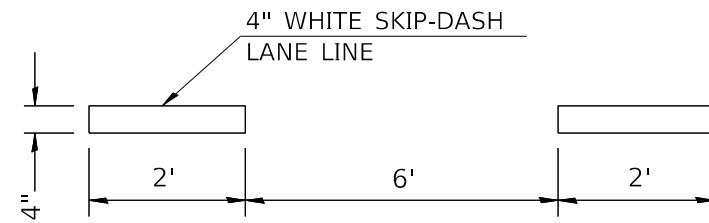
STATE OF ILLINOIS
DEPARTMENT OF TRANSPORTATION

IL 015 (MO. AVE.) & POCKET RD/IL 163
SOIL BORINGS

SCALE: SHEET TS06 OF 6 SHEETS STA. TO STA.

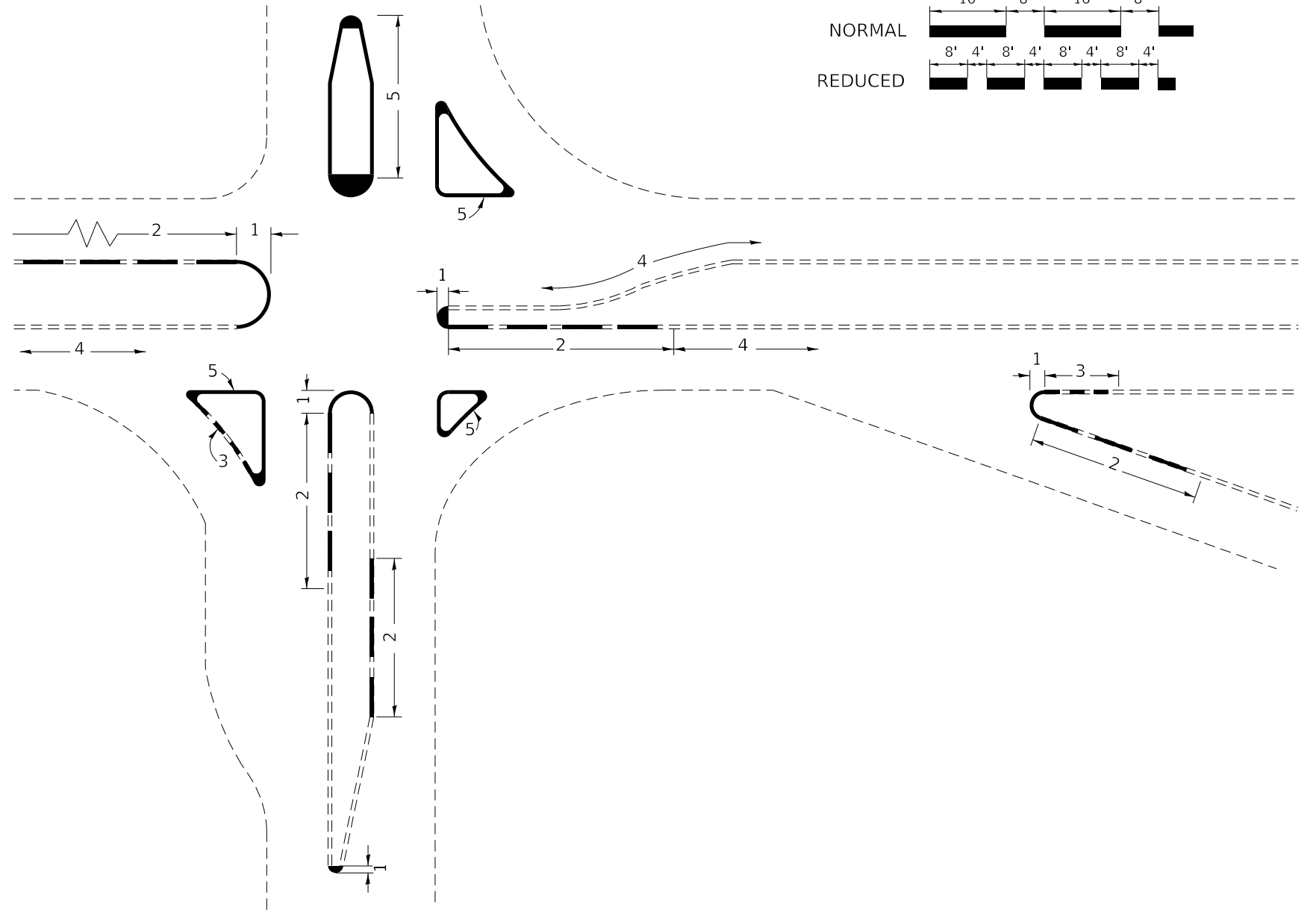
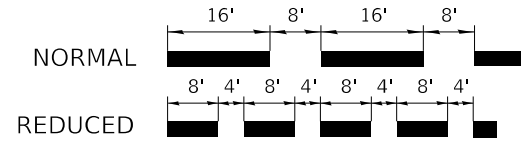
F.A.U. RTE.	SECTION	COUNTY	TOTAL SHEETS	SHEET NO.
103	29-1-N-TS-3	ST. CLAIR	22	21
CONTRACT NO. 76L67				
ILLINOIS		FED. AID PROJECT		

TYPICAL APPLICATION FOR WHITE ABBREVIATED SKIP-DASH LANE LINES



TYPICAL APPLICATION FOR CURB MARKING

SPACING



NOTES

1. PAINT CURB AND NOSE SOLID FOR 10' OR RADIUS OF NOSE, WHICHEVER IS GREATER.
2. PAINT MINIMUM OF 3 STRIPES IN DIRECTION OF TRAFFIC.
3. REDUCED SPACING USED TO OBTAIN 3 STRIPS MINIMUM.
4. STRIPING RECOMMENDED ONLY WHERE OPERATIONAL PROBLEMS DICTATE.
5. PAINT SOLID WHERE A MINIMUM OF 3 STRIPES CANNOT BE PLACED.

MODEL: Default
FILE: \\nashc-pix\ill08\EBID\NTEC\Illinois\gov\PI\DOT\Documents\DOT_Offices\Director\Projects\0876167\CADD\data\CAD\sheet\087167-zht-schedule.dgn

USER NAME = humphreysb	DESIGNED -	REVISED -
	DRAWN -	REVISED -
PLOT SCALE = 100.0000 ' / in.	CHECKED -	REVISED -
PLOT DATE = 12/10/2018	DATE -	REVISED -

STATE OF ILLINOIS
DEPARTMENT OF TRANSPORTATION

DETAIL SHEET

SCALE: NTS SHEET 1 OF 1 SHEETS STA. TO STA.

F.A.P. RTE.	SECTION	COUNTY	TOTAL SHEETS	SHEET NO.
103	29-1-N-TS-3	ST. CLAIR	22	22
CONTRACT NO. 76L67			ILLINOIS FED. AID PROJECT	