

059

INDEX OF SHEETS: 03-08-2019 LETTING ITEM 059

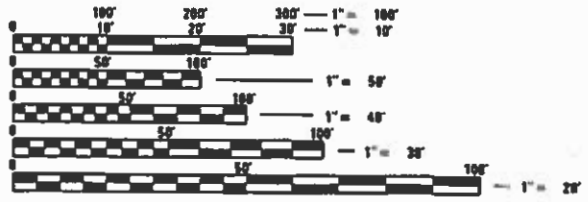
- 1 COVER SHEET
- 2 COMMITMENTS, GENERAL NOTES, AND JOB SPECIFIC NOTES
- 3 SUMMARY OF QUANTITIES
- 4 TYPICAL BRIDGE DECK SECTION
- 5-8 SCHEDULE OF QUANTITIES

HIGHWAY STANDARDS:

- 701006-05
- 701201-05
- 701301-04
- 701400-09
- 701406-12
- 701411-09
- 701426-09
- 701428-01
- 701456-05
- 701602-10
- 701901-08

DISTRICT STANDARDS:

NONE



FULL SIZE PLANS HAVE BEEN PREPARED USING STANDARD ENGINEERING SCALES. REDUCED SIZED PLANS WILL NOT CONFORM TO STANDARD SCALES. IN MAKING MEASUREMENTS ON REDUCED PLANS, THE ABOVE SCALES MAY BE USED.

J.U.L.I.E. JOINT UTILITY LOCATION INFORMATION FOR EXCAVATION 1-800-892-0123 OR 811

PROJECT ENGINEER: RICHARD DOTSON (309) 671-3455
PROJECT MANAGER: RAYMOND SAMARA (309) 671-3460
SQUAD LEADER: MICHAEL JACOBS (309) 671-3460

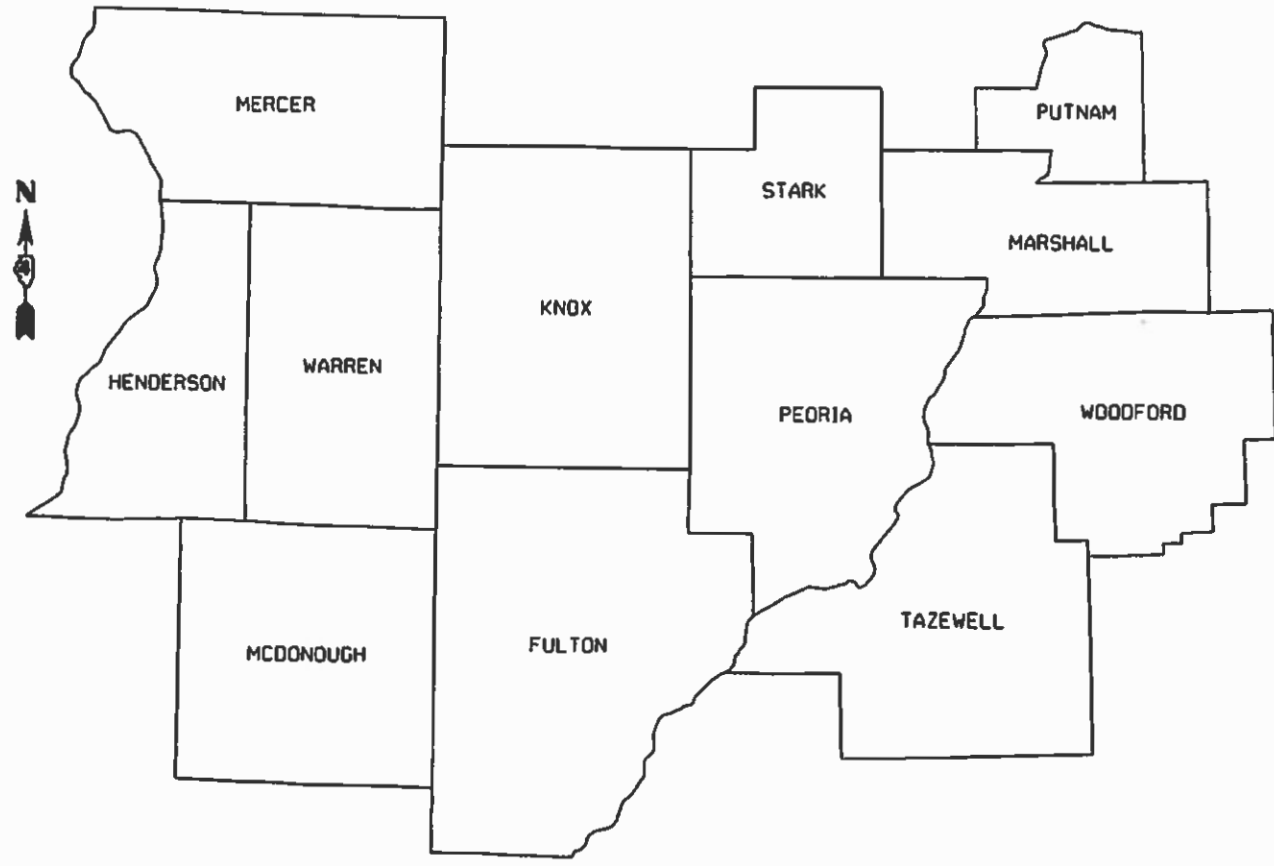
CATALOG NO. 035663-00D
CONTRACT NO. 68E67

STATE OF ILLINOIS
DEPARTMENT OF TRANSPORTATION

PROPOSED
HIGHWAY PLANS

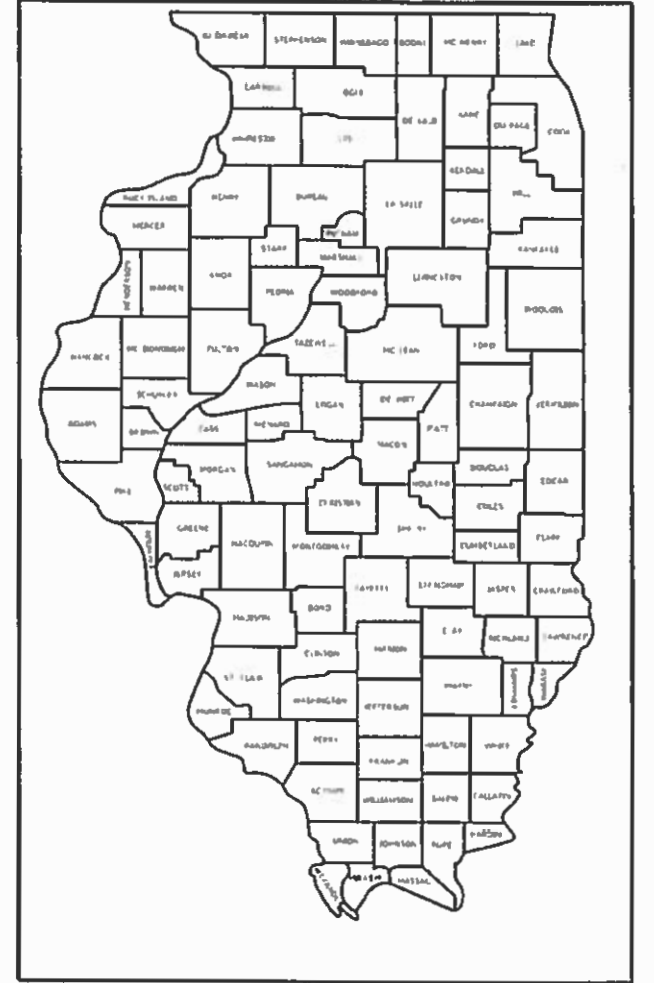
VARIOUS ROUTES
SECTION D4 BRIDGE DECK SEALING 2019
PROJECT STP-A5A0(201)
VARIOUS COUNTIES

C-94-003-19



VAR. RTE.	SECTION	COUNTY	TOTAL SHEETS	SHEET NO.
D4	BRIDGE DECK SEALING 2019	VARIOUS	8	1
		ILLINOIS	CONTRACT NO. 68E67	

D-94-003-19



PROJECT DESCRIPTION:

BRIDGE DECK SEALING ON VARIOUS STRUCTURES THROUGHOUT DISTRICT 4.

STATE OF ILLINOIS
DEPARTMENT OF TRANSPORTATION

SUBMITTED December 14 2018
Richard A. Samara
REGIONAL ENGINEER

Feb 1 2019
[Signature]
ENGINEER OF DESIGN AND ENVIRONMENT

Feb 1 2019
[Signature]
DIRECTOR OF HIGHWAYS PROJECT IMPLEMENTATION

PRINTED BY THE AUTHORITY
OF THE STATE OF ILLINOIS

GROSS LENGTH = N/A
NET LENGTH = N/A

COMMITMENTS

Commitments are not to be altered without the written approval of all parties to which the commitment was made.

NO COMMITMENTS HAVE BEEN MADE FOR THIS PROJECT.

JOB SPECIFIC NOTES

Prior to performing any work, the contractor shall coordinate their work effort with the existing construction contracts in their vicinity to alleviate traffic conflicts and assure traffic progression through all work zones.

A flow meter shall be provided by the contractor to accurately measure quantities per bridge. This shall not be paid for separately, but shall be included in the contract unit price per square feet for "Bridge Deck Concrete Sealer".

When applicable, standard 701426 may be used if sealer dries in less than 1 hour.

Work shall be performed and completed only between the hours of 8:30 A.M. and 3:30 P.M. at the following structure locations in Tazewell County:

- 090-0106 EB I-474 OVER IL 29 (STD. 701428 REQUIRED)
- 090-0107 WB I-474 OVER IL 29 (STD. 701428 REQUIRED)
- 090-0108 EB I-474 OVER IL RIVER (STD. 701428 REQUIRED)
- 090-0109 WB I-474 OVER IL RIVER (STD. 701428 REQUIRED)
- 090-0110 SB IL 116 OVER TEN MILE CREEK
- 090-0115 WB US 150 OVER IL RIVER
- 090-0152 IL 40 RAMP OVER I-74
- 090-0153 WB I-74 RAMP OVER I-74
- 090-0155 EB I-74 RAMP OVER MAIN STREET
- 090-0156 CAMP STREET RAMP OVER MAIN STREET
- 090-0157 EB I-74 RAMP OVER CAMP STREET
- 090-0158 EB I-74 OVER ALTORFER LANE (STD. 701428 REQUIRED)
- 090-0159 WB I-74 OVER ALTORFER LANE (STD. 701428 REQUIRED)
- 090-0160 WB I-74 OVER IL 116 (STD. 701428 REQUIRED)
- 090-0161 EB I-74 OVER IL 116 (STD. 701428 REQUIRED)
- 090-0162 EB I-74 RAMP OVER EAST WASHINGTON STREET
- 090-0163 WB I-74 RAMP OVER EAST WASHINGTON STREET
- 090-0172 IL 29 OVER LICK CREEK

MODEL: \$MODELNAME\$
FILE NAME: \$FILES\$

USER NAME = \$USERS	DESIGNED -	REVISED -
	DRAWN -	REVISED -
PLOT SCALE = \$SCALE\$	CHECKED -	REVISED -
PLOT DATE = \$DATE\$	DATE -	REVISED -

**STATE OF ILLINOIS
DEPARTMENT OF TRANSPORTATION**

COMMITMENTS, GENERAL NOTES, AND JOB SPECIFIC NOTES

SCALE: SHEET 1 OF 1 SHEETS STA. TO STA.

VAR. RTE.	SECTION	COUNTY	TOTAL SHEETS	SHEET NO.
	D4 BRIDGE DECK SEALING 2019	VARIOUS	8	2
			CONTRACT NO. 68E67	
		ILLINOIS	FED. AID PROJECT	

CODE NO.	ITEM	UNIT	TOTAL QUANTITY	CONST. CODE	
				VARIOUS COUNTIES	80% FEDERAL 20% STATE 0047
67100100	MOBILIZATION	L SUM	1	1	
70100420	TRAFFIC CONTROL AND PROTECTION, STANDARD 701411	EACH	10	10	
70100450	TRAFFIC CONTROL AND PROTECTION, STANDARD 701201	L SUM	1	1	
70100700	TRAFFIC CONTROL AND PROTECTION, STANDARD 701406	L SUM	1	1	
70100825	TRAFFIC CONTROL AND PROTECTION, STANDARD 701456	L SUM	1	1	
70102632	TRAFFIC CONTROL AND PROTECTION, STANDARD 701602	L SUM	1	1	
X5870015	BRIDGE DECK CONCRETE SEALER	SQ FT	1570959	1570959	

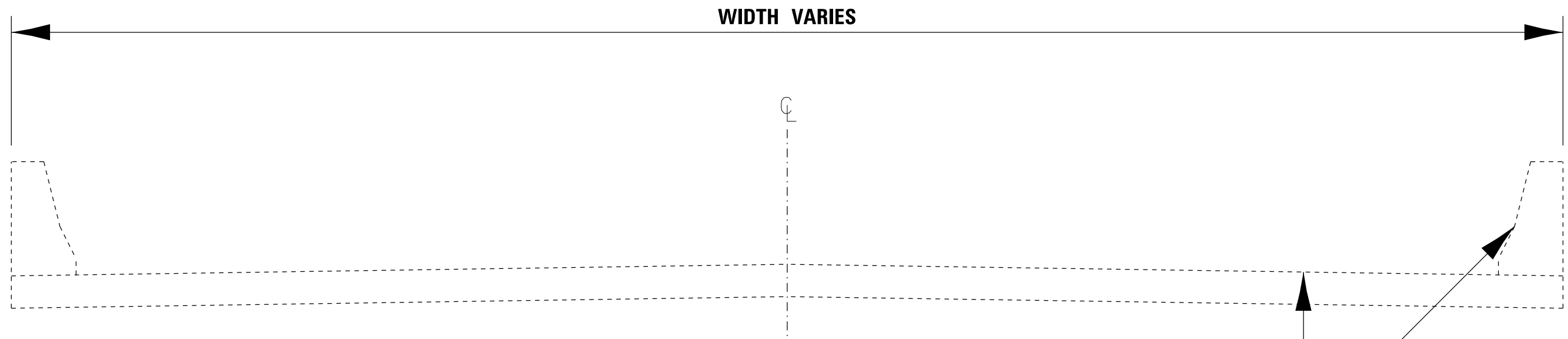
MODEL: #MODEL NAME #
FILE NAME: #FILE #

USER NAME = #USER#	DESIGNED -	REVISED -
PLOT SCALE = #SCALE#	DRAWN -	REVISED -
PLOT DATE = #DATE#	CHECKED -	REVISED -
	DATE -	REVISED -

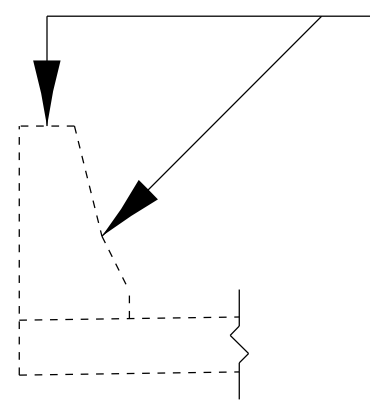
**STATE OF ILLINOIS
DEPARTMENT OF TRANSPORTATION**

SUMMARY OF QUANTITIES

VAR. RTE.	SECTION	COUNTY	TOTAL SHEETS	SHEET NO.
	D4 BRIDGE DECK SEALING	VARIOUS	8	3
			CONTRACT NO. 68E67	
ILLINOIS FED. AID PROJECT				



**APPLY PROTECTIVE COAT TO BRIDGE DECK,
FACE OF PARAPET, AND TOP OF PARAPET**



**APPLY PROTECTIVE COAT TO FACE OF
PARAPET AND TOP OF PARAPET**

NOTE:

**IN CASES OF A SHORTER PARAPET WITH ATTACHED RAIL,
THE ABOVE APPLICATION METHOD WILL STILL APPLY.**

MODEL: 140DELMAMES
FILE NAME: 31113

USER NAME = \$USERS	DESIGNED -	REVISED -
	DRAWN -	REVISED -
PLOT SCALE = \$SCALE\$	CHECKED -	REVISED -
PLOT DATE = \$DATE\$	DATE -	REVISED -

**STATE OF ILLINOIS
DEPARTMENT OF TRANSPORTATION**

TYPICAL BRIDGE DECK SECTION

SCALE: SHEET 1 OF 1 SHEETS STA. TO STA.

VAR. RTE.	SECTION	COUNTY	TOTAL SHEETS	SHEET NO.
	D4 BRIDGE DECK SEALING 2019	VARIOUS	8	4
			CONTRACT NO. 68E67	
		ILLINOIS	FED. AID PROJECT	

BRIDGE DECK CONCRETE SEALER (1 OF 3)							
STRUCTURE NUMBER	FACILITY CARRIED	FEATURE CROSSED	LOCATION	BRIDGE DECK LENGTH	BRIDGE DECK WIDTH	BRIDGE DECK AREA	BRIDGE PARAPET AREA
				FOOT	FOOT	SQ FT	SQ FT
029-0005	US 24	OTTER CREEK	1 MI SW JCT US136&24	321.00	33.30	10,689.30	0.00
029-0022	IL 100	OTTER CREEK	S EDGE OF ENION	234.00	30.00	7,020.00	0.00
029-0023	IL 100	SEAHORNE BRANCH	2.25 MI N MARBLETOWN	24.00	40.20	964.80	0.00
029-0026	IL 97	TRIB BIG CREEK	3.5 MI S OF CUBA	42.50	31.50	1,338.80	0.00
029-0030	US 24	DRAINAGE DITCH	1.5 MI SW BANNER	24.20	33.20	803.40	0.00
029-0048	US 24	TRIB RICE LAKE	2MI S OF BANNER	40.00	19.00	755.40	0.00
029-0050	IL 116	SPOON RIVER	W EDGE LONDON MILLS	800.00	32.10	25,680.00	6,048.20
029-0051	IL 9	TURKEY CREEK	4.25 MI W OF FIATT	177.00	32.30	5,717.10	1,446.00
029-0052	IL 9	LOST GROVE CREEK	4 MI W OF FIATT	137.00	36.30	4,973.10	0.00
029-0053	IL 41	CEDAR CREEK	2 MI N. OF AVON	183.00	36.00	6,588.00	622.20
029-0054	IL 9	PUTT CREEK	4 MI W OF CANTON	59.00	32.20	1,899.80	433.10
029-0056	IL 78 AND IL 97	SPOON RIVER	1 MI N JCT 136	589.00	32.00	18,848.00	4,499.50
029-0057	IL 97	COAL CREEK	2 MI N OF FAIRVIEW	122.00	32.70	3,989.40	895.50
029-0058	FAS 457	CRABTREE CREEK	3 MI N US136 & IL 78	126.00	30.00	3,780.00	924.80
029-0059	US 24	BUCKHEART CREEK	1 MI NE JCT IL78 & US24	102.40	32.00	3,242.00	741.30
029-0061	IL 97	TURKEY CREEK	2 MI S OF FAIRVIEW	62.00	32.00	1,984.00	455.10
029-0062	IL 97	LOST GROVE CREEK	3.2 MI S OF FAIRVIEW	75.00	32.00	2,400.00	550.50
029-0063	US 136	GRAHAM BRANCH	2 MI E JCT US136&24	67.50	31.80	2,146.50	495.50
029-0064	IL 9	BIG CREEK	W. EDGE OF CANTON CL	89.00	39.50	3,515.50	1,459.60
029-0065	IL 97	PUTT CREEK	2.2 MI N OF CUBA	202.00	35.90	7,251.80	1,482.70
029-0066	IL 116	LITTLERS CREEK	2.4 MI W FARMINGTON	102.00	32.30	3,294.60	748.70
029-0067	US 24 / IL 100	SPOON RIV OVER FLOW	N OF DUNCAN MILLS	91.00	39.80	3,621.80	728.00
029-0068	US 24 / IL 100	SPOON RIVER	N OF DUNCAN MILLS	709.00	39.70	28,147.30	5,896.00
034-0511	EB US 136	EAST FORK LAMOINE RIVER	1.4 MI W JCT 61 136	250.00	40.10	10,025.00	2,240.00
034-0512	WB US 136	EAST FORK LAMOINE RIVER	1.4 MI W JCT 61 136	250.00	40.10	10,025.00	2,240.00
090-0104	SPFLD RD FAU 6719	I-474	.3 MI N OF MULLER RD	252.30	41.90	10,571.37	2,023.88
090-0105	COLE ST	I-474	0.25 MI N MULLER RD	238.60	42.50	10,140.50	1,919.76
090-0106	EB I-474	ILL 29	S. EDGE OF CR COEUR	244.00	38.60	9,418.40	1,960.80
090-0107	WB I-474	ILL 29	S EDGE OF CREVE COEU	247.00	45.10	11,139.70	1,983.60
090-0108	EB I-474	ILLINOIS RIVER	SW OF CREVE COEUR	3,421.00	38.90	133,076.90	26,106.00
090-0109	WB I-474	ILLINOIS RIVER	SW OF CREVE COEUR	3,425.00	39.00	133,575.00	26,136.40
090-0110	SB ILL 116	TEN MILE CREEK	N JCT ILL 116 & 26	158.00	38.50	6,083.00	1,307.20
090-0115	WB US 24 / WB US 150	ILLINOIS RIVER AND CRI&P RR	IN PEORIA	4,748.00	60.70	188,336.70	44,494.40
PAGE 1 SUBTOTAL						671,043	137,839
PAGE 1 TOTAL						808,882	

MODEL: 840DELMRMS
FILE: 840DELMRMS.DWG

USER NAME = \$USERS	DESIGNED -	REVISED -
	DRAWN -	REVISED -
PLOT SCALE = \$SCALES	CHECKED -	REVISED -
PLOT DATE = \$DATES	DATE -	REVISED -

**STATE OF ILLINOIS
DEPARTMENT OF TRANSPORTATION**

SCHEDULE OF QUANTITIES

SCALE: SHEET 1 OF 4 SHEETS STA. TO STA.

VAR. RTE.	SECTION	COUNTY	TOTAL SHEETS	SHEET NO.
	DR BRIDGE DECK SEALING 2019	VARIOUS	8	5
			CONTRACT NO. 68E67	
		ILLINOIS	FED. AID PROJECT	

BRIDGE DECK CONCRETE SEALER (2 OF 3)								
STRUCTURE NUMBER	FACILITY CARRIED	FEATURE CROSSED	LOCATION	BRIDGE DECK LENGTH	BRIDGE DECK WIDTH	BRIDGE DECK AREA	BRIDGE PARAPET AREA	
				FOOT	FOOT	SQ FT	SQ FT	
090-0116	FAU 6753	I-74	1.5 MI W OF I-155	253.00	40.00	10,120.00	1,857.00	
090-0117	CH 22	I-74	1 MI W OF I-155	342.00	40.00	13,680.00	3,170.90	
090-0120	WEST WASHINGTON STREET	FARM CREEK	1600' S.CAMP ST.	206.00	113.50	19,549.40	2,424.60	
090-0125	NB I-155	AT&SF RR	.3 MI N OF ILL 98	142.00	40.20	5,708.40	1,218.40	
090-0126	SB I-155	AT&SF RR	.3 MI N OF ILL 98	141.00	40.50	5,710.50	1,187.70	
090-0127	RAMP FROM IL 98 TO I-155	AT&SF RR	.3 MI N OF IL 98	147.00	26.40	3,880.80	1,255.10	
090-0128	SB I-155	IL 98	1.2 MI S OF I-74	182.00	53.90	8,881.60	1,335.90	
090-0129	NB I-155	IL 98	1.2 MI S OF I-74	181.00	54.20	8,905.20	1,328.50	
090-0130	QUEENWOOD ROAD	I-155	1 MI S OF ILL 98	191.00	66.50	12,701.50	1,695.50	
090-0131	SB MAIN STREET	I-155	1.6 MI S OF IL 98	460.00	25.90	11,914.00	3,743.40	
090-0132	BROADWAY ROAD	I-155	2.5 MI S OF IL 98	195.00	61.80	12,051.00	1,724.90	
090-0133	ALLENTOWN ROAD	I-155	2 MI N OF ILL 9	215.00	34.20	7,353.00	1,651.50	
090-0134	SB I-155	IL 9	5.6 MI S OF IL 98	182.00	41.90	7,625.80	1,335.90	
090-0135	NB I-155	IL 9	5.6 MI S OF IL 98	182.20	42.20	7,688.80	1,337.30	
090-0136	TOWNLINER ROAD	I-155	3 MI S OF IL 9	221.00	62.10	13,724.10	1,695.50	
090-0137	FEATHER ROAD	I-155	4.9 MI S OF ILL 9	224.00	30.10	6,742.40	1,717.60	
090-0138	IL 122	I-155	S. INTERCHGE IL 122	215.00	62.00	13,330.00	1,651.50	
090-0139	ARMINGTON ROAD	I-155	3 MI S OF ILL 122	325.00	30.00	9,750.00	2,458.90	
090-0143	IL 29	MACKINAW RIVER	N OF GREEN VALLEY	875.00	32.00	28,000.00	6,642.70	
090-0144	EAST WASHINGTON STREET	FARM CREEK	ILL 8 E. PEORIA	194.00	64.00	12,416.00	3,918.80	
090-0146	IL 98	LICK CREEK	E JCT ILL 29&98	104.00	59.30	6,162.00	763.40	
090-0148	US 150	LITTLE FARM CREEK	3M E 150 & 8 E.PEO.	49.00	40.30	1,974.70	359.70	
090-0151	IL 98	LICK CREEK TRIB	E JCT ILL 29&98	86.50	43.50	3,762.80	634.90	
090-0152	FAP 404	I-74	EAST PEORIA	175.00	25.90	4,532.50	2,106.00	
090-0153	I-74 RAMP	DIVERSION CHANNEL	EAST PEORIA	1,454.00	35.40	51,471.60	10,386.60	
090-0155	I-74 EB TO EB CAMP STREET	MAIN STREET AND RAMP	0.03 MI W OF US 116	636.00	26.00	16,536.00	6,264.00	
090-0156	CAMP STREET TO WB I-74	MAIN STREET AND RAMP	0.02 MI NE 74	691.00	26.00	17,966.00	6,381.00	
090-0157	EXIT TO CAMP STREET	WB US 150	.25 MI E JCT US 116	180.00	26.00	4,680.00	1,620.00	
090-0158	EB I-74	ALTORFER LANE AND TP&W RR	.25 MI W OF ILL 116	257.00	107.00	25,828.50	3,074.90	
090-0159	WB I-74	ALTORFER LANE AND TP&W RR	.25 MI W OF ILL 116	222.00	79.60	17,660.10	2,638.40	
090-0160	WB I-74	IL 116	ILL 116 INTERCHANGE	194.00	41.70	8,080.10	1,882.00	
090-0161	EB I-74	IL 116	ILL 116 INTERCHANGE	194.00	54.90	10,650.60	2,250.40	
090-0162	EB I-74 RAMP	EAST WASHINGTON STREET	ILL 8 INTER,E PEORIA	210.00	62.90	12,369.00	2,347.50	
						PAGE 2 SUBTOTAL	401,407	84,061
						PAGE 2 TOTAL	485,468	

MODEL: \\MODELNAME
FILE: \\MODELNAME.PLT

USER NAME = \$USERS	DESIGNED -	REVISED -
	DRAWN -	REVISED -
PLOT SCALE = \$SCALE	CHECKED -	REVISED -
PLOT DATE = \$DATE	DATE -	REVISED -

**STATE OF ILLINOIS
DEPARTMENT OF TRANSPORTATION**

SCHEDULE OF QUANTITIES

SCALE: SHEET 2 OF 4 SHEETS STA. TO STA.

VAR. RTE.	SECTION	COUNTY	TOTAL SHEETS	SHEET NO.
DR BRIDGE DECK SEALING 2019	VARIOUS		8	6
CONTRACT NO. 68E67				
ILLINOIS		FED. AID PROJECT		

BRIDGE DECK CONCRETE SEALER (3 OF 3)

STRUCTURE NUMBER	FACILITY CARRIED	FEATURE CROSSED	LOCATION	BRIDGE DECK LENGTH	BRIDGE DECK WIDTH	BRIDGE DECK AREA	BRIDGE PARAPET AREA
				FOOT	FOOT	SQ FT	SQ FT
090-0163	WB I-74 RAMP	EAST WASHINGTON STREET	ILL 8 INTER,E PEORIA	210.00	57.60	11,802.00	1,680.00
090-0164	MEADOWS AVENUE	LITTLE FARM CREEK	US 150 E PEORIA	75.00	59.30	4,447.50	550.50
090-0171	IL 26	TEN MILE CREEK	N OF ILL 116	126.00	40.00	5,040.00	924.80
090-0172	IL 29	LICK CREEK	1 MI N OF ILL 98	139.00	84.00	11,676.00	1,020.30
090-0173	IL 98	LICK CREEK	2.5 MI W OF MORTON	88.30	36.00	3,178.80	648.10
090-0174	IL 29	LITTLE LICK CREEK	AT ELM ST IN N PEKIN	85.00	78.50	6,672.50	623.90
102-0007	US 24	WALNUT CREEK	0.5 MI W OF ILL 117	169.00	32.00	5,408.00	2,112.50
102-0008	US 24	PANTHER CREEK	4.2 MI W OF I39/US51	241.00	40.10	9,664.10	1,768.90
102-0012	IL 117	I-74	JCT I-74 & ILL 117	226.00	40.10	9,062.60	1,835.00
102-0018	IL 117	WALNUT CREEK	4.22 MI S OF ILL 116	43.00	39.20	1,685.60	0.00
102-0034	COUNTY ROAD	I-74	2.9 MI E OF ILL 117	217.00	24.10	5,229.70	1,562.40
102-0041	ILL 117	MILL CR	3.6 MI S. OF US 24	80.00	30.50	2,440.00	714.40
102-0043	US 150	MACKINAW RIVER	1.8 MI E OF ILL 117	505.00	32.00	16,160.00	3,927.00
102-0045	IL 89	RICHLAND CREEK	5.35 MI N OF ILL 116	85.00	32.60	2,771.00	0.00
102-0046	US 24	AT&SF RR	W OF EUREKA	230.00	44.20	10,166.00	1,911.30
102-0047	CH 2	I-39 / US 51	.49 MI W OF IL 251	228.00	62.20	14,181.60	1,673.50
102-0048	TR 41	I-39 / US 51	3 MI N OF ILL 116	297.00	34.30	10,187.10	2,180.00
102-0049	IL 116	I-39 / US 51	8 MI N OF US 24	226.00	66.10	14,938.60	1,658.80
102-0050	TR 95	I-39 / US 51	2 MI S OF ILL 116	228.00	28.00	6,384.00	1,673.20
102-0051	TR 103	I-39 / US 51	3.0 MI S OF ILL 116	230.00	28.00	6,440.00	1,688.20
102-0052	SB I-39 / US 51	PANTHER CREEK	4.4 MI N OF US 24	164.50	40.10	6,596.50	1,207.40
102-0053	NB I-39 / US 51	PANTHER CREEK	4.4 MI N OF US 24	165.00	40.10	6,616.50	1,211.10
102-0054	ROANOKE ROAD	I-39 / US 51	3.5 MI N OF US24	231.00	34.00	7,854.00	1,695.50
102-0055	SB I-39 / US 51	EAST BRANCH PANTHER CREEK	1.9 MI N US 24	92.00	40.10	3,689.20	675.30
102-0056	NB I-39 / US 51	EAST BRANCH PANTHER CREEK	1.9 MI N OF US 24	92.00	40.10	3,689.20	675.30
102-0057	TR 165	I-39 / US 51	1 MI N OF US 24	231.00	30.10	6,953.10	1,695.50
102-0060	TR 207	I-39 / US 51	2 MI S OF US 24	227.00	30.00	6,810.00	1,666.20
102-0061	KAPPA ROAD	I-39 / US 51	4.1 MI S OF US 24	258.00	34.00	8,772.00	1,893.70
102-0062	TR 229	I-39 / US 51	5.2 MI S OF US 24	220.00	30.00	6,600.00	1,614.80
102-0063	IL 26	RICHLAND CREEK	10.18 MI S OF ILL 17	179.50	44.00	7,898.00	1,317.50
102-0067	IL 26	SNAG CREEK	7.3 MI S OF ILL 17	90.50	32.10	2,905.00	664.30
102-0080	IL 117	WALNUT CREEK	1.26 MI S OF US 24	125.00	58.80	6,809.50	1,409.70
PAGE 3 SUBTOTAL						232,729	43,880
PAGE 3 TOTAL						276,609	
GRAND TOTAL						1,570,959	

MODEL NUMBER: 68E67
FILE NAME: 68E67

USER NAME = \$USERS	DESIGNED -	REVISED -	STATE OF ILLINOIS DEPARTMENT OF TRANSPORTATION	SCHEDULE OF QUANTITIES			VAR. RTE.	SECTION	COUNTY	TOTAL SHEETS	SHEET NO.
	DRAWN -	REVISED -					DR BRIDGE DECK SEALING 2019	VARIOUS	8	7	
PLOT SCALE = \$SCALES	CHECKED -	REVISED -		SCALE: SHEET 3 OF 4 SHEETS STA. TO STA.			ILLINOIS FED. AID PROJECT				
PLOT DATE = \$DATES	DATE -	REVISED -									

MOBILIZATION	
LOCATION	L SUM
JOBSITE	1
TOTAL	1

TRAFFIC CONTROL AND PROTECTION, STANDARD 701411	
LOCATION	EACH
JOBSITE	10
TOTAL	10

TRAFFIC CONTROL AND PROTECTION, STANDARD 701201	
LOCATION	L SUM
JOBSITE	1
TOTAL	1

TRAFFIC CONTROL AND PROTECTION, STANDARD 701456	
LOCATION	L SUM
JOBSITE	1
TOTAL	1

TRAFFIC CONTROL AND PROTECTION, STANDARD 701406	
LOCATION	L SUM
JOBSITE	1
TOTAL	1

TRAFFIC CONTROL AND PROTECTION, STANDARD 701602	
LOCATION	L SUM
JOBSITE	1
TOTAL	1

MODEL: \$MODELNAME\$
FILE NAME: \$FILE\$

USER NAME = \$USERS	DESIGNED -	REVISED -
	DRAWN -	REVISED -
PLOT SCALE = \$SCALE\$	CHECKED -	REVISED -
PLOT DATE = \$DATE\$	DATE -	REVISED -

**STATE OF ILLINOIS
DEPARTMENT OF TRANSPORTATION**

SCHEDULE OF QUANTITIES

SCALE: SHEET 4 OF 4 SHEETS STA. TO STA.

VAR. RTE.	SECTION	COUNTY	TOTAL SHEETS	SHEET NO.
	DR BRIDGE DECK SEALING 2019	VARIOUS	8	8
			CONTRACT NO. 68E67	
			ILLINOIS FED. AID PROJECT	