

SUMMARY OF QUANTITIES				CONSTRUCTION CODE	
				90% FEDERAL 10% STATE	
CODE NO.	ITEM	UNIT	TOTAL QUANTITY	ROADWAY	0010 ROADWAY
35650500	BASE COURSE WIDENING 10"	SQ YD	424	424	
40600290	BITUMINOUS MATERIALS (TACK COAT)	POUND	142	142	
40600990	TEMPORARY RAMP	SQ YD	194	194	
42000060	WELDED WIRE REINFORCEMENT	SQ YD	83	83	
42000080	PAVEMENT CONNECTOR (PCC) FOR BRIDGE APPROACH SLAB	SQ YD	119	119	
42000501	PORTLAND CEMENT CONCRETE PAVEMENT 10" (JOINTED)	SQ YD	540	540	
42001100	HIGH-EARLY-STRENGTH PORTLAND CEMENT CONCRETE PAVEMENT 10"	SQ YD	869	869	
42001300	PROTECTIVE COAT	SQ YD	1531	1531	
44000100	PAVEMENT REMOVAL	SQ YD	1585	1585	
44000500	COMBINATION CURB AND GUTTER REMOVAL	FOOT	81	81	
44004250	PAVED SHOULDER REMOVAL	SQ YD	72	72	
48203029	HOT-MIX ASPHALT SHOULDERS, 8"	SQ YD	255	255	△
48203037	HOT-MIX ASPHALT SHOULDERS, 10"	SQ YD	274	274	
48203100	HOT-MIX ASPHALT SHOULDERS	TON	90	90	

⊗ SPECIALTY ITEM

△ REV. 2-27-2019

REV. - MS

PRINT DRIVER = I:\D.E.B\Projects\ESCA\Projects\1259\09\125909.dwg
 PLOT DATE = 1/2/2019 9:27:27 AM
 PLOT SCALE = 0.1667' / 1"



USER NAME = kjk	DESIGNED - JHM	REVISED -
ESCA PROJECT NO. 1259.09	DRAWN - JHM	REVISED -
PLOT SCALE = 0.1667' / 1"	CHECKED - JMS	REVISED -
PLOT DATE = 1/2/2019 9:27:27 AM	DATE - 01/19	REVISED -

STATE OF ILLINOIS
DEPARTMENT OF TRANSPORTATION

SUMMARY OF QUANTITIES

SCALE SHEET NO. 2 OF 8 SHEETS STA. TO STA.

F.A.I. RTE.	SECTION	COUNTY	TOTAL SHEETS	SHEET NO.
57	(77-1-3)HB-2	PULASKI	92	5
FED. ROAD DIST. NO. ILLINOIS FED. AID PROJECT			CONTRACT NO. 78454	

EARTHWORK SCHEDULE					
LOCATION		EARTH EXCAVATION	SUITABLE EARTH EXCAVATION ADJUSTED FOR SHRINKAGE	EMBANKMENT (NOT A PAY ITEM)	EARTHWORK BALANCE WASTE (+) OR SHORTAGE (-)
		CU YD	CU YD	CU YD	CU YD
CH 7 PRE STAGE I	RT 72+56.13 TO 76+46.17	54	41	3	38
CH 7 PRE STAGE I	RT 78+52.80 TO 82+17.04	56	42	2	40
CH 7 PRE STAGE I	LT 72+89.65 TO 74+95.00	35	26	1	25
CH 7 PRE STAGE I	LT 80+04.64 TO 82+44.50	36	27	1	26
CH 7 STAGE I	LT 74+50.00 TO 76+89.00	3	2	142	-140
CH 7 STAGE I	LT 78+07.00 TO 80+50.00	2	1.5	170	-169
CH 7 STAGE II	RT 74+50.00 TO 76+93.00	1	0.75	136	-135
CH 7 STAGE II	RT 78+12.00 TO 80+50.00	1	0.75	266	-265
CH 7 STAGE III	RT 73+10.00 TO 74+95.00	15	11	19	-8
CH 7 STAGE III	RT 80+04.64 TO 81+75.00	21	16	9	7
CH 7 STAGE IV	LT 73+10.00 TO 74+95.00	14	11	33	-22
CH 7 STAGE IV	LT 80+04.64 TO 81+75.00	19	14	11	3
I-57	224+50.00 TO 231+00.00	12	9	279	-270
TOTALS		269	202	1072	-870

NOTES:

- EXCAVATION USED AS EMBANKMENT = (SUITABLE EARTH EXCAVATION)*0.75
- THE EARTHWORK SCHEDULE DOES NOT REFLECT THE EARTHWORK BALANCE FOR THE VARIOUS STAGES.

PCC PAVEMENT SCHEDULE			
LOCATION	SUBBASE GRANULAR MATERIAL, TYPE A	PC CONCRETE PAVEMENT, 10" (JOINTED)	HIGH-EARLY-STRENGTH PC CONCRETE PAVEMENT 10"
	TON	SQ YD	SQ YD
CH 7 STA 73+10 TO STA 74+95	168		452
CH 7 STA 74+95 TO STA 76+03.64	224	266	
CH 7 STA 78+92.38 TO STA 80+04.64	262	274	
CH 7 STA 80+04.64 TO STA 81+75	129		417
TOTALS		783	869

PAVEMENT, SHOULDER & CURB AND GUTTER REMOVAL SCHEDULE			
LOCATION	PAVEMENT REMOVAL	COMBINATION CURB & GUTTER REMOVAL	PAVED SHOULDER REMOVAL
	SQ YD	FOOT	SQ YD
CH 7 RT STA 72+56.13 TO RT STA 72+56.70			6
CH 7 RT STA 72+56.13 TO RT STA 72+89.04		53	
CH 7 LT STA 72+89.65 TO LT STA 73+09.75		28	
CH 7 STA 73+10 TO STA 76+46.81	803 (1)		
CH 7 STA 78+49.81 TO STA 81+75	782 (1)		
CH 7 RT STA 81+84.92 TO RT STA 82+17.04			21
CH 7 LT STA 81+90 TO LT STA 82+44.50			45
TOTALS		1,585	72

(1) NOTE: EXISTING REINFORCED BRIDGE APPROACH PAVEMENT SHALL BE REMOVED AND WILL BE PAID FOR AT THE CONTRACT UNIT UNIT PRICE PER SQUARE YARD FOR PAVEMENT REMOVAL.

SHOULDER SCHEDULE				
LOCATION	HOT-MIX ASPHALT SHOULDERS, 8"	HOT-MIX ASPHALT SHOULDERS, 10"	HOT-MIX ASPHALT SHOULDERS	BITUMINOUS MATERIALS (TACK COAT)
	SQ YD	SQ YD	TON	POUND
CH 7 RT STA 72+56.13 TO RT STA 73+10		39		
CH 7 LT STA 72+92.13 TO LT STA 73+10		11		
CH 7 RT STA 73+10 TO RT STA 74+95			27	37
CH 7 LT STA 73+10 TO LT STA 74+95			32	37
CH 7 LT STA 74+95 TO LT STA 76+33.75	34	48		
CH 7 RT STA 74+95 TO RT STA 76+37.37	93	0		
CH 7 LT STA 78+58.65 TO LT STA 80+04.64	44	50		
CH 7 RT STA 78+62.27 TO RT STA 80+04.64	84	0		
CH 7 RT STA 80+04.64 TO RT STA 81+75			17	34
CH 7 LT STA 80+04.64 TO LT STA 81+75			14	34
CH 7 RT STA 81+75 TO RT STA 82+17.04		42		
CH 7 LT STA 81+75 TO LT STA 82+44.50		84		
TOTALS		255	274	142

PAVEMENT CONNECTOR FOR BRIDGE APPROACH SCHEDULE				
LOCATION	SUBBASE GRANULAR MATERIAL, TYPE A	PAVEMENT CONNECTOR (PCC) FOR BRIDGE APPROACH SLAB	PROTECTIVE COAT	WELDED WIRE REINFORCEMENT
	TON	SQ YD	SQ YD	SQ YD
SN 077-0041 WEST APPROACH	108.5 (2)	59.5	61	41.4
SN 077-0041 EAST APPROACH	108.5 (2)	59.5	61	41.4
TOTALS		217	119	83

(2) NOTE: SUBBASE GRANULAR MATERIAL QUANTITY INCLUDES THE QUANTITY OF SUBBASE UNDER THE APPROACH SLAB THAT IS IN EXCESS OF THE 4" THICKNESS BENEATH THE BRIDGE APPROACH SLAB. REFER TO DETAIL ON SHEET NO. 42.

PIPE DRAIN & INLET SCHEDULE					
LOCATION	METAL FLARED END SECTIONS 12"	CONCRETE HEADWALL FOR PIPE DRAINS	PIPE DRAINS 12"	CONCRETE THRUST BLOCKS	TYPE G INLET BOX STANDARD 610001
	EACH	EACH	FOOT	EACH	EACH
CH 7 LT STA 76+44		1			
CH 7 LT STA 78+44		1			
CH 7 RT STA 78+85.10	1		57	1	1
CH 7 LT STA 78+85.74	1		69	1	1
TOTALS		2	126	2	2

CLASS SI CONCRETE (OUTLET) SCHEDULE		
LOCATION	CLASS SI CONCRETE (OUTLET)	
	CU YD	
CH 7 LT STA 72+89.65	0.5	
TOTAL		0.5

TEMPORARY RAMP		
LOCATION	TEMPORARY RAMP	
	SQ YD	
CH 7 LT STA 74+57 LT STA 74+95	68	
CH 7 LT STA 80+04.64 TO LT STA 80+75.05	126	
TOTAL		194

SEEDING SCHEDULE							
LOCATION	SEEDING, CLASS 2A	SEEDING, CLASS 7	NITROGEN FERTILIZER NUTRIENT	PHOSPHORUS FERTILIZER NUTRIENT	POTASSIUM FERTILIZER NUTRIENT	AGRICULTURAL GROUND LIMESTONE	MULCH, METHOD 2
	ACRE	ACRE	POUND	POUND	POUND	TON	ACRE
I-57 MEDIAN	0.52	0.52	47	47	47	1.0	0.52
CH 42 NW QUADRANT	0.20	0.20	18	18	18	0.4	0.20
CH 42 SW QUADRANT	0.15	0.15	14	14	14	0.3	0.15
CH 42 NE QUADRANT	0.20	0.20	18	18	18	0.4	0.20
CH 42 SE QUADRANT	0.18	0.18	16	16	16	0.4	0.18
TOTALS		1.25	113	113	113	2.5	1.25

EROSION CONTROL SCHEDULE				
LOCATION	EROSION CONTROL BLANKET	TEMPORARY EROSION CONTROL SEEDING	PERIMETER EROSION BARRIER	TEMPORARY DITCH CHECKS
	SQ YD	POUND	FOOT	FOOT
I-57 MEDIAN	0	104	0	50
CH 7 NW QUADRANT	142	39	212	0
CH 7 SW QUADRANT	280	29	206	0
CH 7 NE QUADRANT	397	39	265	0
CH 7 SE QUADRANT	420	39	265	0
TOTALS		1,239	250	50

REV. 2-27-2019

PRINT DRIVER = 8/10/2019 10:00 AM
 MODEL NAME = PLOT
 PLOT DATE = 2/27/2019 10:00 AM



USER NAME = kjk	DESIGNED - JHM	REVISED - 02/19 JMS
ESCA PROJECT NO. 1259.09	DRAWN - JHM	REVISED -
PLOT SCALE = 0.1667' / 1"	CHECKED - JMS	REVISED -
PLOT DATE = 2/25/2019 5:26:55 PM	DATE - 12/18	REVISED -

STATE OF ILLINOIS
DEPARTMENT OF TRANSPORTATION

SCHEDULES OF QUANTITIES

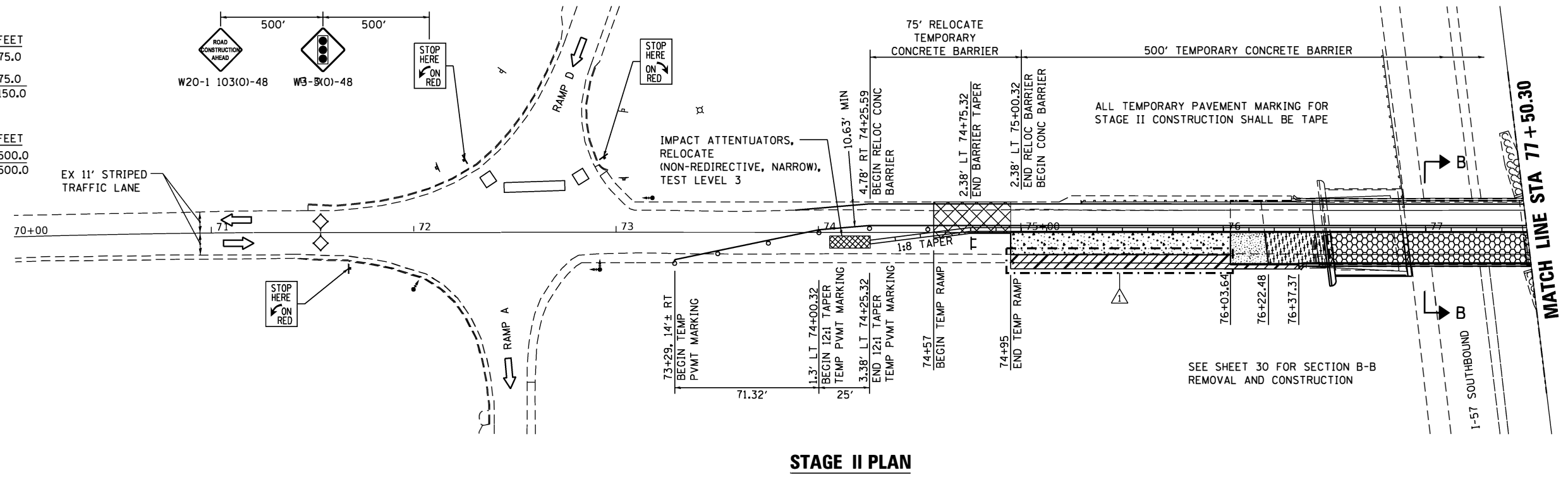
SCHEDULE OF QUANTITIES

RELOCATE TEMPORARY CONCRETE BARRIER			
STATION, O/S	TO	STATION, O/S	FEET
74+25.59, 4.78' RT		75+00.32, 2.38' LT	75.0
80+00.32, 2.38' LT		80+75.05, 4.77' RT	75.0
		TOTAL	150.0

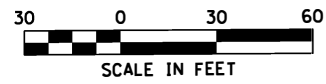
TEMPORARY CONCRETE BARRIER			
STATION, O/S	TO	STATION, O/S	FEET
75+00.32, 2.38' LT		80+00.32, 2.38' LT	500.0
		TOTAL	500.0

PINNING TEMPORARY CONCRETE BARRIER				
STATION	TO	STATION	TYPE	EACH
74+50.32		74+87.20	TRANSITION	6
80+12.82		80+50.32	TRANSITION	6
		STAGE II TOTAL		12

IMPACT ATTENUATORS, RELOCATE (NON-REDIRECTIVE, NARROW) TEST LEVEL 3 - 2 EACH

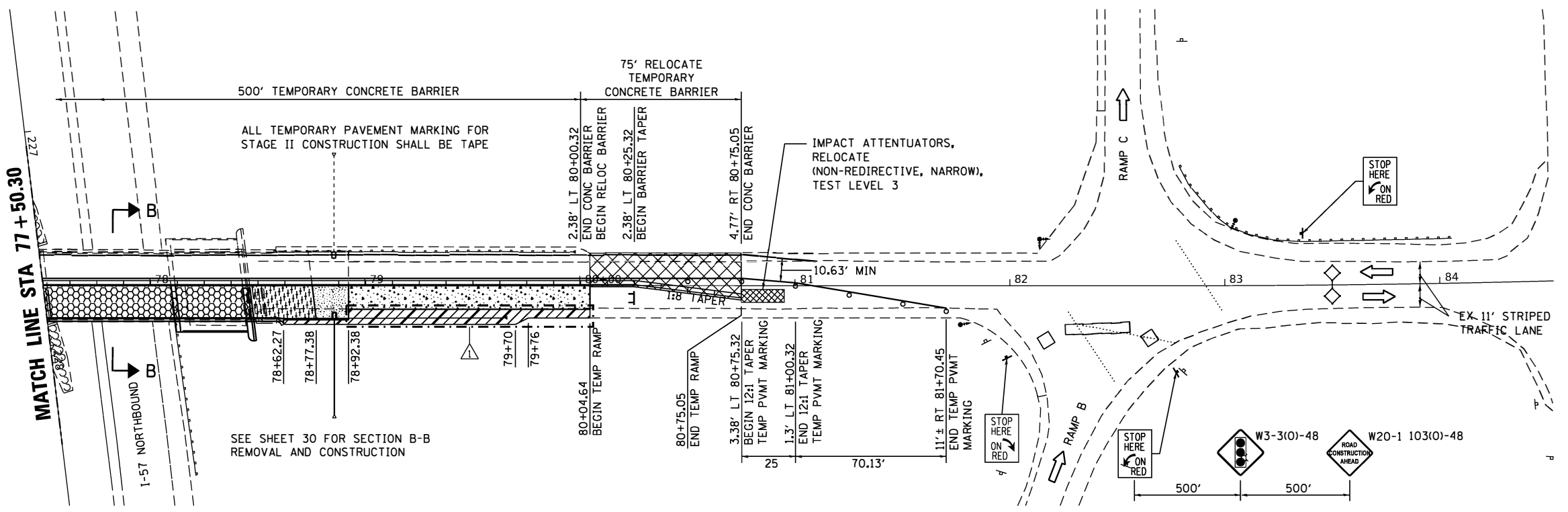


STAGE II PLAN



LEGEND

- DIRECTION OF TRAFFIC
- TRAFFIC SIGNAL WITH BACKPLATE, SIGNAL DIRECTION INDICATED
- DETECTOR LOOP
- DRUM WITH STEADY BURNING BI-DIRECTIONAL LIGHT
- TYPE III BARRICADE WITH FLASHING LIGHTS
- HMA SHOULDERS 8"
- HMA SHOULDERS 10"
- PCC PAVEMENT 10" (JOINTED)
- PAVEMENT CONNECTOR (PCC) FOR BRIDGE APPROACH SLAB
- BRIDGE APPROACH SLAB
- CAST IN PLACE CONCRETE BRIDGE SLAB
- TEMPORARY RAMP (INSTALLED IN STAGE I)



STAGE II PLAN

REV. 2-27-2019

I:\OWNER - SOLUTIONS\2019\11-18-19\11-18-19-01\11-18-19-01.dwg
 11/18/19 5:36:57 PM



USER NAME = kjk	DESIGNED - JHM	REVISED - 02/19 JMS
ESCA PROJECT NO. 1295.09	DRAWN - JHM	REVISED -
PLOT SCALE = 0.1667' / 1"	CHECKED - JMS	REVISED -
PLOT DATE = 2/25/2019 5:36:57 PM	DATE - 11/18	REVISED -

STATE OF ILLINOIS
DEPARTMENT OF TRANSPORTATION

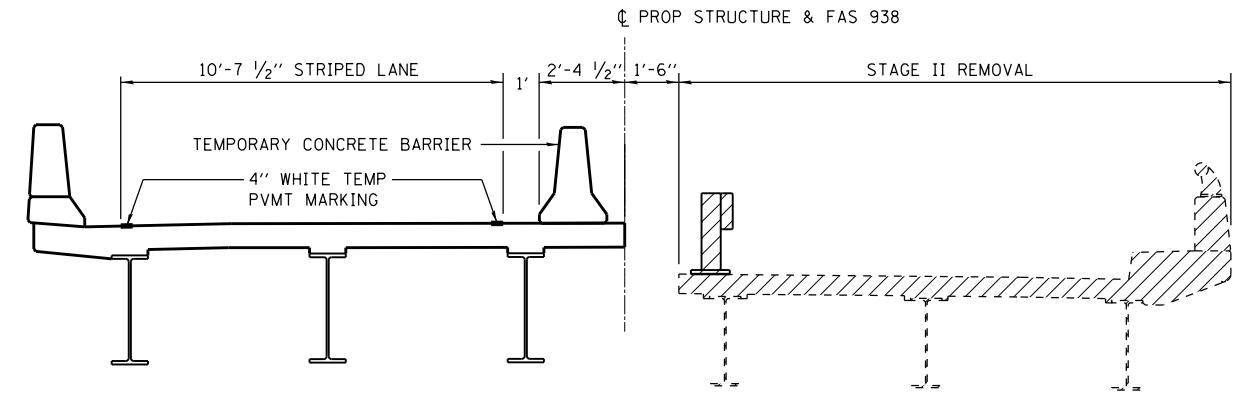
FAS 938 (CH 7) STAGE CONSTRUCTION DETAILS

SCALE: AS SHOWN SHEET NO. 3 OF 8 SHEETS STA. 71+00 TO STA. 83+00

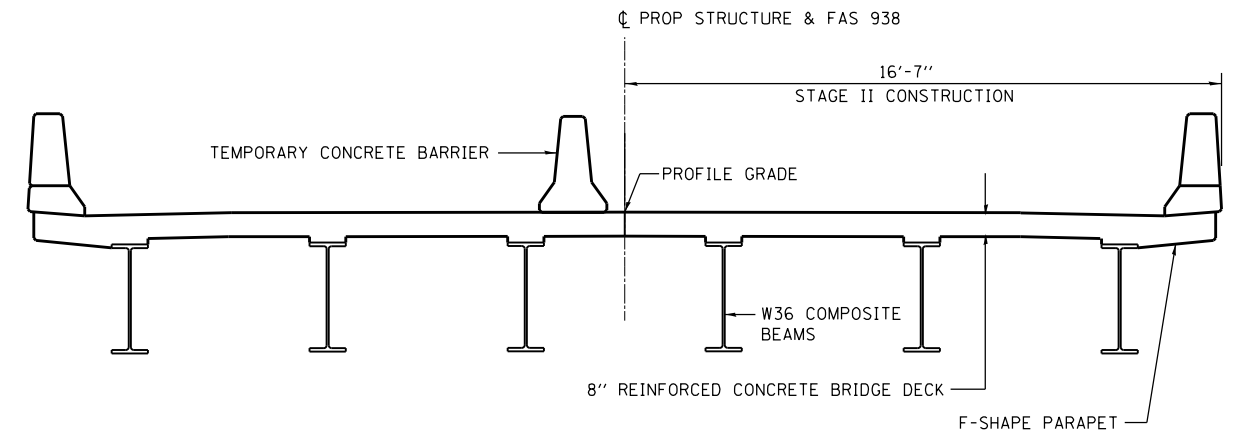
F.A.I. - R.T.E.	SECTION	COUNTY	TOTAL SHEETS	SHEET NO.
57	(77-1-3)HB-2	PULASKI	92	29
CO NTRAC TNO .78454				
FED. ROAD DIST. NO. ILLINOIS FED. AID PROJECT				

STAGE II GENERAL NOTES

1. TRAFFIC CONTROL SHALL BE ERECTED AS SHOWN AND ACCORDING TO TRAFFIC CONTROL AND PROTECTION, STANDARD 701321. SEE STANDARD 701321 FOR THE COMPLETION OF THE STAGE CONSTRUCTION TRAFFIC CONTROL THAT IS NOT SHOWN THAT INCLUDES, BUT IS NOT LIMITED TO, ADVANCE SIGNING, ADVANCE LOOP PLACEMENT, DRUMS WITH STEADY BURNING LIGHTS, DOUBLE VERTICAL PANELS AND BARRIER WALL/GUARDRAIL MARKERS.
2. SEE SPECIAL PROVISIONS FOR ADDITIONAL TRAFFIC CONTROL REQUIREMENTS.
3. TEMPORARY RUMBLE STRIPS SHOWN ON STANDARD 701321 WILL NOT BE REQUIRED.
4. THE INTERSECTIONS SHALL BE MONITORED AND THE CYCLE LENGTH AND TIMING ADJUSTED IF PROBLEMS ARE ENCOUNTERED DURING CONSTRUCTION. BACKUPS OF RAMP TRAFFIC ONTO I-57 SHALL BE AVOIDED.
5. THE DIMENSION SHOWN ON THE WIDTH RESTRICTION SIGN (W12-1102(O)-48) SHOWN ON STANDARD 701321 AND ON THE ADVANCE WARNING SIGN (W12-1103) SHOWN ON THIS SHEET SHALL BE 11'-0" FOR STAGE II CONSTRUCTION.
6. THE CENTERLINE PAVEMENT MARKING SHALL BE REMOVED FROM THE STOP BAR TO THE SAND ATTENUATORS OR DRUMS. EDGE LINE PAVEMENT MARKING SHOULD BE REMOVED IF A 10 FT LANE WIDTH CANNOT BE MAINTAINED. TEMPORARY EDGE LINES SHOULD BE INSTALLED WHEN THE EDGE LINES ARE REMOVED.
7. THE TEMPORARY SIGNALS SHALL REMAIN IN OPERATION AND THE TEMPORARY BARRIERS SHALL REMAIN IN PLACE UNTIL THE BRIDGE, PCC PAVEMENT 10", PCC PAVEMENT CONNECTOR, APPROACH SLAB, HMA SHOULDERS, GUARDRAIL AND TRAFFIC BARRIER TERMINALS ARE COMPLETE FROM RT STA 74+95 TO RT STA 80+04.64. AFTER COMPLETION OF THE DESIGNATED WORK FROM RT STA 74+95 TO RT STA 80+04.64, THE TEMPORARY SIGNALS WILL BE EITHER REMOVED OR TURNED OFF AND COVERED AND THE TEMPORARY CONCRETE BARRIER REMOVED TO ALLOW COMPLETION OF THE STAGE III AND STAGE IV ROADWAY AS DETAILED ON SHEET NOS. 31 THROUGH 34.
8. THE TEMPORARY CONCRETE BARRIER SHALL BE PINNED AS SPECIFIED IN SECTION 704 OF THE STANDARD SPECIFICATIONS. THE TEMPORARY CONCRETE BARRIER PLACED ON THE PROPOSED PCC PAVEMENT 10", APPROACH SLAB, PCC PAVEMENT CONNECTOR, AND BRIDGE DECK FROM STA 74+95 TO 80+04.64 SHALL BE RESTRAINED USING STEEL RETAINERS 1"x10"x10" SHOWN FOR DETAIL III ON SHEET NO. 52. THE STEEL RETAINERS SHALL BE PLACED ON 6'-0" CENTERS AND SECURED TO THE PAVEMENT BY PLACING TWO EACH 5/8" DIAMETER EXPANSION ANCHORS OR CAST IN PLACE INSERTS AT THE MID-DEPTH OF THE PAVEMENT. THE ANCHORS OR INSERTS SHALL HAVE A MINIMUM PROOF LOAD OF 5,000 POUNDS. THE COST OF PROVIDING THE RESTRAINING SYSTEM FOR THE TEMPORARY CONCRETE BARRIER ON TOP OF THE PCC PAVEMENT 10", APPROACH SLAB, PCC PAVEMENT CONNECTOR, AND BRIDGE DECK WILL NOT BE PAID FOR SEPARATELY BUT SHALL BE CONSIDERED INCLUDED IN THE UNIT PRICE PER FOOT FOR TEMPORARY CONCRETE BARRIER.

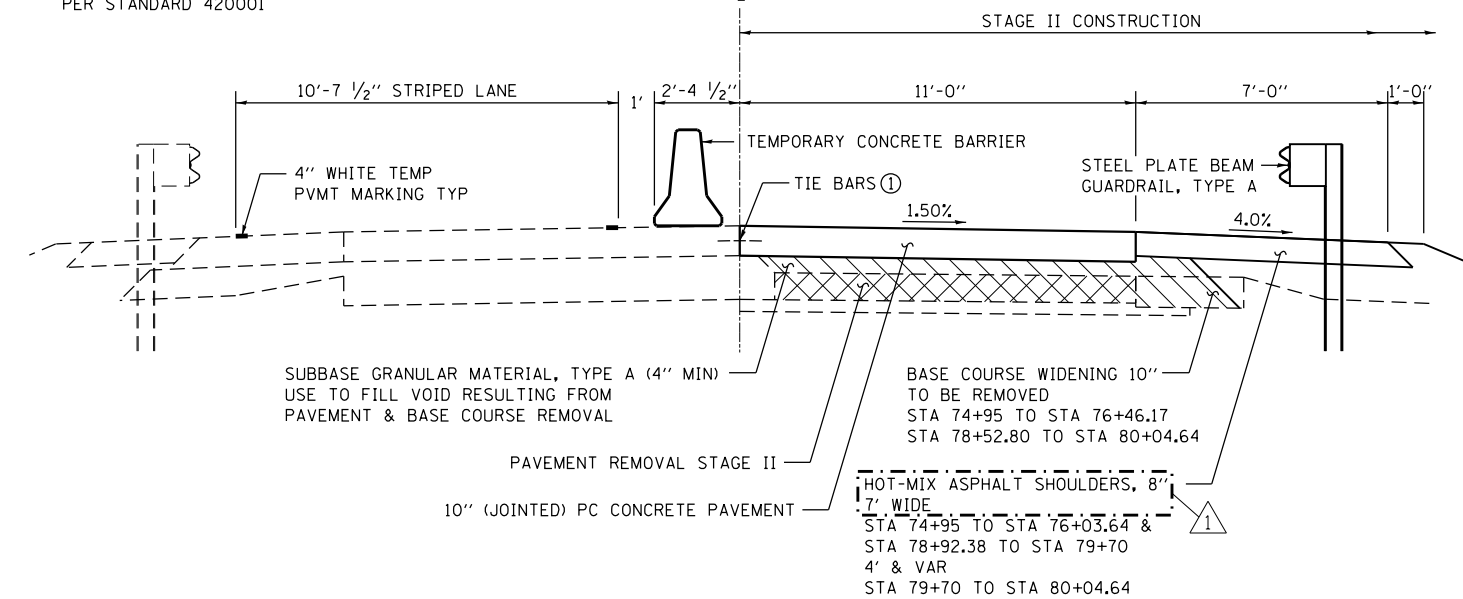


SECTION B-B BRIDGE REMOVAL



SECTION B-B BRIDGE CONSTRUCTION

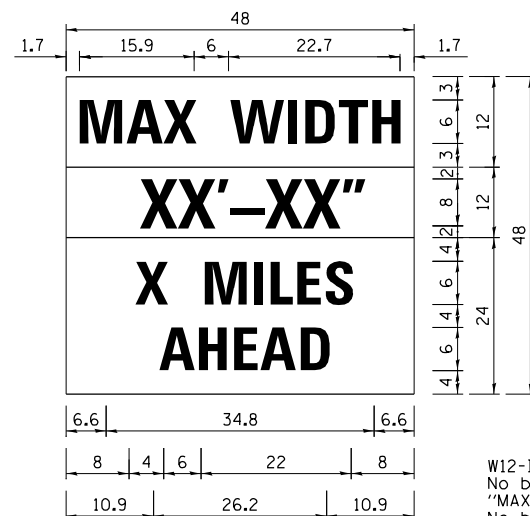
① LONGITUDINAL CONSTRUCTION JOINT (TIE BAR GROUTED IN PLACE) PER STANDARD 420001



▨ SUBBASE GRANULAR MATERIAL, TYPE A
▨ PAVEMENT REMOVAL

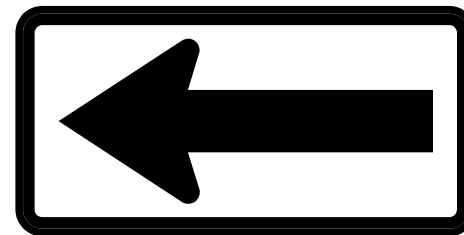
STAGE II ROADWAY
STA 74 + 95 TO STA 76 + 03.64
STA 78 + 92.38 TO STA 80 + 04.64

△ REV. 2-27-2019



W12-1103

W12-1103 (Width is 8D);
No border, Black on White;
"MAX WIDTH" D;
No border, Black on Orange;
"XX'-XX\"/>



W1-6L(O)-4824

NOTE: THIS SIGN SHALL BE PLACED UNDERNEATH THE WIDTH RESTRICTION SIGNS (W12-1103) THAT ARE PLACED ON THE I-57 EXIT RAMP (2 TOTAL).

NOTE: THIS SIGN SHALL BE LOCATED AS DIRECTED BY THE ENGINEER. ONE SIGN SHALL BE PROVIDED FOR EACH APPROACH TO THE SITE ON CH 7 AND FOR EACH EXIT RAMP (4 TOTAL).

WIDTH RESTRICTION SIGN

PRINT DRIVER: M. BLUMENBERG
SCALE: NONE
FILE NAME: I:\Projects\2019\78454\Drawings\78454-04.dwg
DATE: 2/25/2019 5:43:47 PM



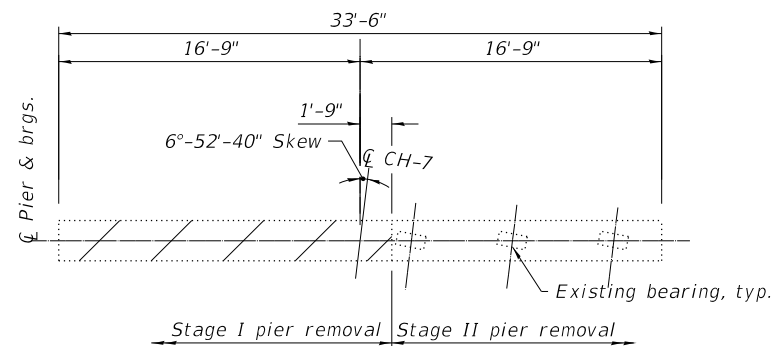
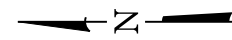
USER NAME = kjk	DESIGNED - JHM	REVISED - 02/19 JMS
ESCA PROJECT NO. 1295.09	DRAWN - JHM	REVISED -
PLOT SCALE = 0.1667' / 1"	CHECKED - JMS	REVISED -
PLOT DATE = 2/25/2019 5:43:47 PM	DATE - 11/18	REVISED -

STATE OF ILLINOIS
DEPARTMENT OF TRANSPORTATION

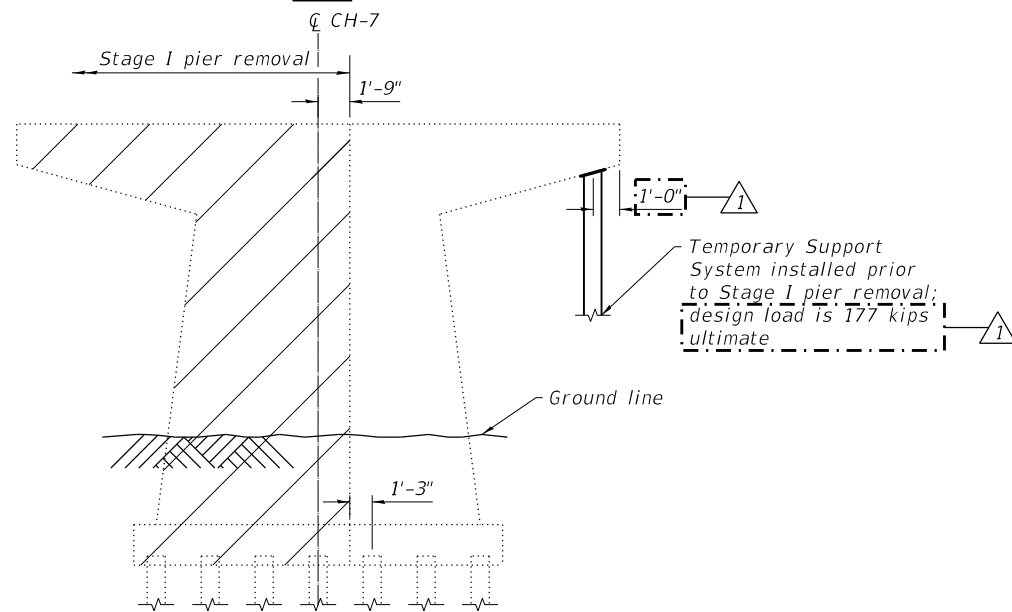
FAS 938 (CH 7) STAGE CONSTRUCTION DETAILS

SCALE: NONE SHEET NO. 4 OF 8 SHEETS STA. 71+00 TO STA. 83+00

F.A.I. RTE.	SECTION	COUNTY	TOTAL SHEETS	SHEET NO.
57	(77-1-3)HB-2	PULASKI	92	30
CONTRACT NO. 78454				
FED. ROAD DIST. NO. ILLINOIS FED. AID PROJECT				



Plan

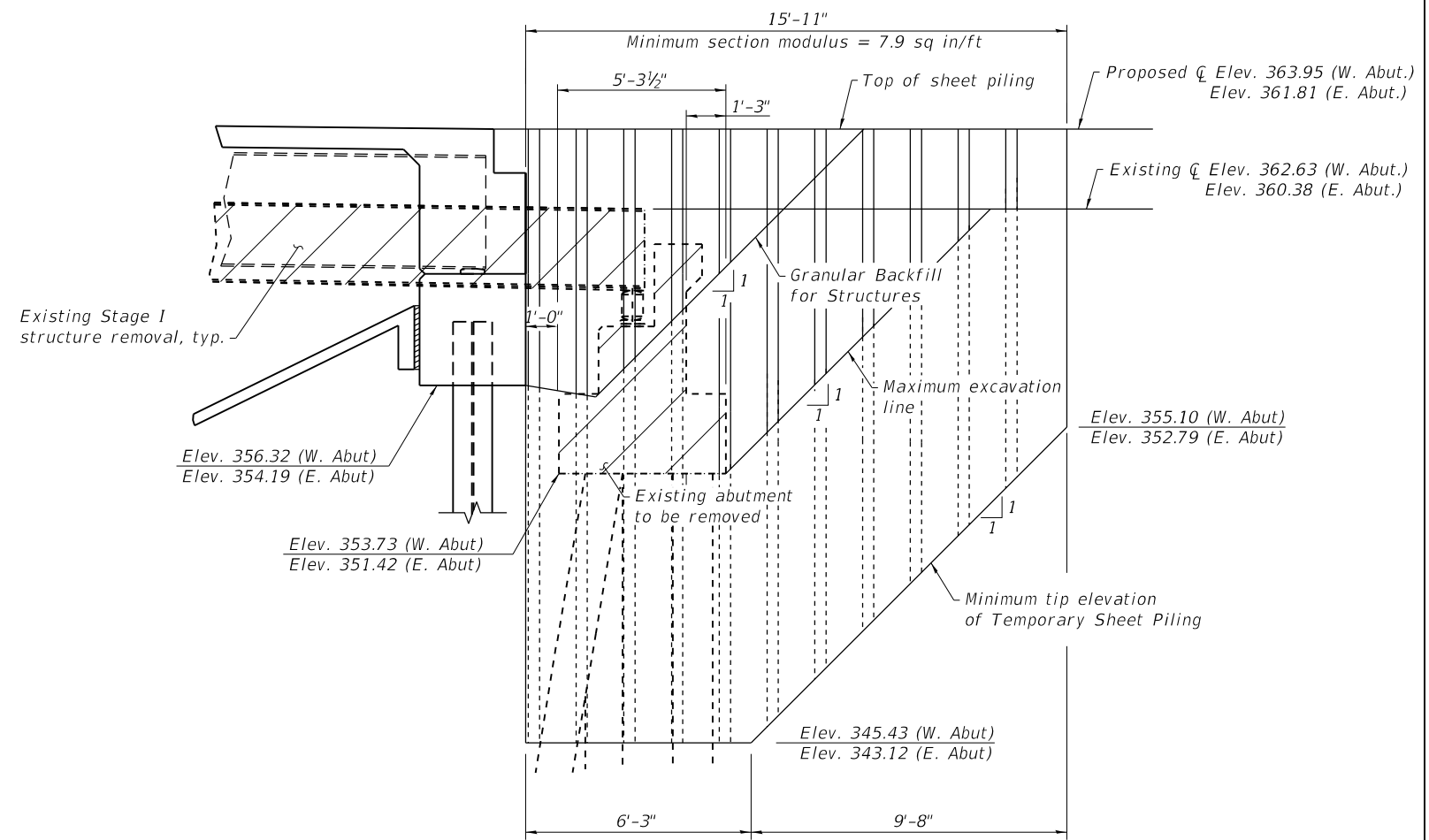


Note: Existing end piers to be completely removed in Stage II

Elevation

CENTER PIER REMOVAL SKETCH

(Looking East)



TEMPORARY SHEET PILING

Notes:

If the Contractor chooses to alter the temporary cantilevered sheet piling design requirements shown on the plans, a design submittal including plan details and calculations will be required for review and acceptance by the Engineer.

The Contractor shall connect the first sheet to the existing abutment wall to ensure stability of sheets driven to the top of the existing footing. This connection shall be reviewed and accepted by the Engineer and included in the cost for Temporary Sheet Piling.

Existing structure details are taken from existing plans.

Dimensions and slopes are shown along the Temporary Sheet Piling unless noted otherwise.

**STATE OF ILLINOIS
DEPARTMENT OF TRANSPORTATION**

**STAGE CONSTRUCTION DETAILS
STRUCTURE NO. 077-0041**

SHEET NO. 5 OF 26 SHEETS

F.A.I. RTE.	SECTION	COUNTY	TOTAL SHEETS	SHEET NO.
57	(77-1-3)HB-2	PULASKI	92	51
CONTRACT NO. 78454				

REV. 2-27-2019

PRINT DRIVER = PLOTTERS
 SCALE NAME = PLOT
 FILE NAME = 0770041-0865-05-51.dwg



USER NAME =	kjk	DESIGNED -	KJA	05/18	REVISED -	02/19	ELH
ESCA PROJECT NO.	1259.09	CHECKED -	RTM/ELH	05/18	REVISED -		
PLOT SCALE =	0:2" / in.	DRAWN -	KAH/JMK	08/18	REVISED -		
PLOT DATE =	2/25/2019 5:14:34 PM	CHECKED -	KJA	08/18	REVISED -		

ILLINOIS FED. AID PROJECT