

STATE OF ILLINOIS  
DEPARTMENT OF TRANSPORTATION

F.A. RTE.	SECTION	COUNTY	TOTAL SHEETS	SHEET NO.
D7	D7 PATCHING 2019-3	FAYETTE	10	1
		ILLINOIS	CONTRACT NO. 74882	

\*FAP 322, FAS 1751, & FAU 8413

D-97-069-18

FOR INDEX OF SHEETS, SEE SHEET NO. 2

# PROPOSED HIGHWAY PLANS

ADT = 2,517

FAP ROUTE 322, FAS ROUTE 1751, FAU ROUTE 8413 (US 51 & 40, IL 185)  
SECTION D7 PATCHING 2019-3

PATCHING  
FAYETTE COUNTY

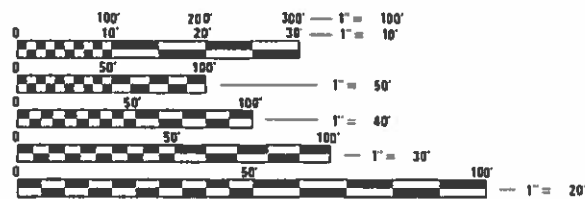
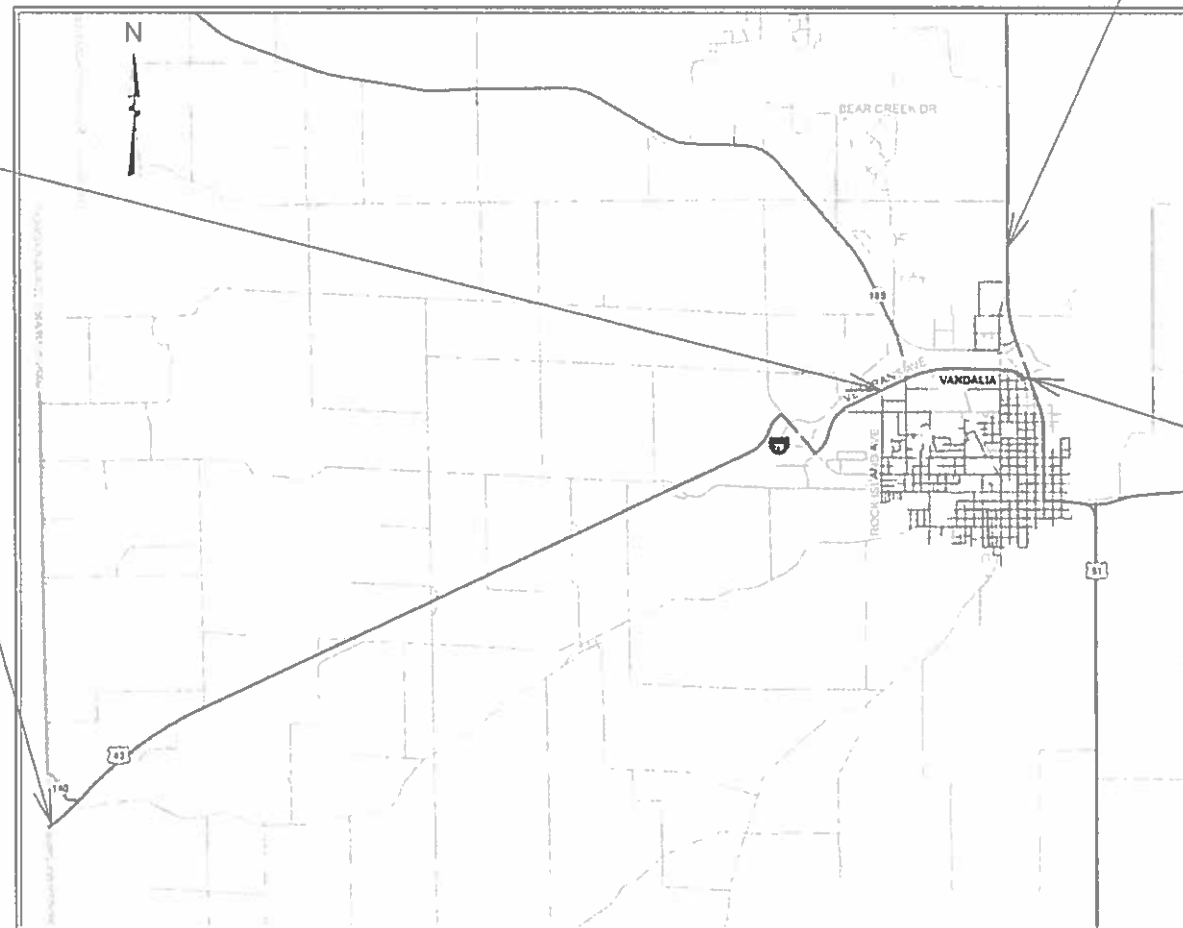
C-97-119-18

PROJECT BEGINS:  
BEAR CREEK

PROJECT ENDS:  
ROCK ISLAND AVE.

PROJECT BEGINS:  
BOND CO. LINE

PROJECT ENDS:  
VETERANS AVE.



FULL SIZE PLANS HAVE BEEN PREPARED USING STANDARD ENGINEERING SCALES. REDUCED SIZED PLANS WILL NOT CONFORM TO STANDARD SCALES. IN MAKING MEASUREMENTS ON REDUCED PLANS, THE ABOVE SCALES MAY BE USED.

J.U.L.I.E.  
JOINT UTILITY LOCATION INFORMATION FOR EXCAVATION  
1-800-892-0123  
OR 811

PROJECT ENGINEER: BRIAN LEWIS  
PROJECT MANAGER: TRAVIS WALK

GROSS LENGTH = 49,368 FT. = 9.35 MILE  
NET LENGTH = 49,368 FT. = 9.35 MILE

CONTRACT NO. 74882

STATE OF ILLINOIS  
DEPARTMENT OF TRANSPORTATION

SUBMITTED DECEMBER 3, 2018  
Jeffrey M. Strickland  
REGIONAL ENGINEER

Feb 20 2019  
Paul P. Chafin  
ENGINEER OF DESIGN AND ENVIRONMENT

Feb 20 2019  
Paul P. Chafin  
DIRECTOR OF HIGHWAYS PROJECT IMPLEMENTATION

PRINTED BY THE AUTHORITY  
OF THE STATE OF ILLINOIS

INDEX OF SHEETS

<u>SHEET NO.</u>	<u>ITEM</u>
1	COVER SHEET
2	INDEX OF SHEETS, GENERAL NOTES, & DETECTOR LOOP TABLE
3	SUMMARY OF QUANTITIES
4-7	SCHEDULE OF QUANTITIES
8-9	LOCATION MAPS
10	TYPICAL APPLICATIONS OF DETECTOR LOOPS

THE FOLLOWING STANDARDS ARE A PART OF THESE PLANS AND ARE INCLUDED AFTER SHEET NO. 10 :

<u>STD. NO.</u>	<u>DESCRIPTION</u>
000001-07	STANDARD SYMBOLS, ABBREVIATIONS, AND PATTERNS
001001-02	AREAS OF REINFORCEMENT BARS
001006	DECIMAL OF AN INCH AND OF A FOOT
420701-03	PAVEMENT WELDED WIRE REINFORCEMENT
442001-04	CLASS A PATCHES
442101-09	CLASS B PATCHES
701006-05	OFF-ROAD OPERATIONS, 2L, 2W, 15' TO 24" FROM PAVEMENT EDGE
701101-05	OFF-ROAD OPERATIONS, MULTILANE, 15' TO 24" FROM PAVEMENT EDGE
701201-05	LANE CLOSURE, 2L, 2W, DAY ONLY, FOR SPEEDS >= 45 MPH
701501-06	URBAN LANE CLOSURE, 2L 2W, UNDIVIDED
701601-09	URBAN LANE CLOSURE, MULTILANE, 1W OR 2W, WITH NONTRAVERSABLE MEDIAN
701701-10	URBAN LANE CLOSURE, MULTILANE INTERSECTION
701901-08	TRAFFIC CONTROL DEVICES
886001-01	DETECTOR LOOP INSTALLATIONS
886006-01	TYPICAL LAYOUT FOR DETECTION LOOPS

GENERAL NOTES

THIS PROJECT IS LOCATED ON US ROUTE 51, N. KENNEDY BLVD, FROM VETERANS AVE. TO BEAR CREEK & US 40 FROM BOND COUNTY LINE TO ROCK ISLAND AVE. IN VANDALIA IN FAYETTE COUNTY. THE WORK INCLUDED IN SECTION D7 PATCHING 2019-3 CONSISTS OF PAVEMENT PATCHING, DETECTOR LOOP INSTALLATION, TRAFFIC CONTROL, AND ANY OTHER WORK NECESSARY TO COMPLETE THIS PROJECT.

AN ESTIMATED QUANTITY OF DETECTOR LOOPS, TYPE I HAS BEEN INCLUDED TO REPLACE ANY DETECTOR LOOPS THAT ARE WITHIN THE LIMITS OF A PATCH. THE ACTUAL LOCATIONS OF DETECTOR LOOPS AND FINAL QUANTITIES SHALL BE DETERMINED BY THE ENGINEER IN THE FIELD.

NUMBER OF TURNS REQUIRED  
IN DETECTOR LOOPS

<u>6 X 6</u>		<u>LOOP SIZE</u>
		2 TURNS
		3 TURNS
0	545	4 TURNS
546	818	5 TURNS
819	1145	6 TURNS
1146	1527	7 TURNS
1528	1964	8 TURNS
1965	2455	9 TURNS
2456	3000	10 TURNS

THE NUMBERS IN THE TABLE REPRESENT THE LENGTH OF ELECTRIC CABLE FROM THE LOOP TO THE CABINET

MODEL: Default  
FILE NAME: P:\ILLINOIS\BIDDING\ITEC\Illinois.gov\PWIDOT\Documents\DOT\_Offices\Director\Projects\74882\CADDData\CADD\sheet1074882-ht-general.dgn

\* FAP 322, FAS 1751, & FAU 8413

USER NAME = steffenmk	DESIGNED -	REVISED -	<b>STATE OF ILLINOIS DEPARTMENT OF TRANSPORTATION</b>	<b>INDEX OF SHEETS, GENERAL NOTES, &amp; DETECTOR LOOP TABLE</b>	F.A. RTE.	SECTION	COUNTY	TOTAL SHEETS	SHEET NO.	
	DRAWN -	REVISED -			*	D7 PATCHING 2019-3	FAYETTE	10	2	
PLOT SCALE = 100.0000' / in.	CHECKED -	REVISED -			CONTRACT NO. 74882					
PLOT DATE = 12/4/2018	DATE -	REVISED -			SCALE: N/A	SHEET 1	OF 1	SHEETS	STA.	TO STA.

100%  
STATE

100%  
STATE

SUMMARY OF QUANTITIES			TOTAL QUANTITIES	CONSTRUCTION TYPE CODE	
CODE NO	ITEM	UNIT		0006	0006
				URBAN	RURAL
44200050	WELDED WIRE REINFORCEMENT	SQ YD	112	70	42
44200565	CLASS A PATCHES, TYPE II, 11 INCH	SQ YD	49	30	19
44200569	CLASS A PATCHES, TYPE III, 11 INCH	SQ YD	32	32	
44200966	CLASS B PATCHES, TYPE I, 10 INCH	SQ YD	4	4	
44200970	CLASS B PATCHES, TYPE II, 10 INCH	SQ YD	2205	2205	
44200974	CLASS B PATCHES, TYPE III, 10 INCH	SQ YD	36	36	
44200976	CLASS B PATCHES, TYPE IV, 10 INCH	SQ YD	34	34	
44200994	CLASS B PATCHES, TYPE II, 12 INCH	SQ YD	379	11	368
44200998	CLASS B PATCHES, TYPE III, 12 INCH	SQ YD	42		42
44201299	DOWEL BARS 1 1/2"	EACH	6542	5662	880
44213000	PATCHING REINFORCEMENT	SQ YD	81	62	19
44213200	SAW CUTS	FOOT	16096	13774	2322
44213204	TIE BARS 3/4"	EACH	33	19	14
67100100	MOBILIZATION	L SUM	1	0.5	0.5

SUMMARY OF QUANTITIES			TOTAL QUANTITIES	CONSTRUCTION TYPE CODE	
CODE NO	ITEM	UNIT		0006	0006
				URBAN	RURAL
70100450	TRAFFIC CONTROL AND PROTECTION, STANDARD	L SUM	1	0.5	0.5
	701201				
70102620	TRAFFIC CONTROL AND PROTECTION, STANDARD	L SUM	1	0.5	0.5
	701501				
70102630	TRAFFIC CONTROL AND PROTECTION, STANDARD	L SUM	1	1	
	701601				
70102635	TRAFFIC CONTROL AND PROTECTION, STANDARD	L SUM	1	1	
	701701				
70107025	CHANGEABLE MESSAGE SIGN	CAL DA	56	42	14
* 88600100	DETECTOR LOOP, TYPE I	FOOT	210	210	

\* SPECIALTY ITEM

MODEL: Default  
 FILE: \\nas0101\B&E\BID\NTEC\Illinois\poc\p\WIDOT\Documents\DOT\_Offices\Illinois\Projects\174882\CADD\Drawings\174882-PL-500.dgn

\*FAP 322, FAS 1751, & FAU 8413

USER NAME = steffenmk DESIGNED - DRAWN - PLOT SCALE = 100.0000' / in. CHECKED - PLOT DATE = 12/4/2018 DATE -	REVISED - REVISED - REVISED - REVISED -	STATE OF ILLINOIS DEPARTMENT OF TRANSPORTATION	SUMMARY OF QUANTITIES SCALE: N/A    SHEET 1 OF 1 SHEETS    STA.    TO STA.	F.A. RTE.    SECTION    COUNTY    TOTAL SHEETS    SHEET NO. *    D7 PATCHING 2019-3    FAYETTE    10    3 CONTRACT NO. 74882 ILLINOIS    FED. AID PROJECT
--------------------------------------------------------------------------------------------------------------------------------	--------------------------------------------------	---------------------------------------------------	-------------------------------------------------------------------------------	--------------------------------------------------------------------------------------------------------------------------------------------------------------------

PATCH NUMBER	LANE	STATION	LENGTH (FT)	WIDTH (FT)	CLASS A PATCHES, 11 INCH				PATCHING REINFORCEMENT (SQ YD)	SAW CUTS (FT)
					TYPE I (SQ YD)	TYPE II (SQ YD)	TYPE III (SQ YD)	TYPE IV (SQ YD)		
US 40 (BOND CO. LINE TO ROCK ISLAND DR.)										
RURAL										
1	EB	173+20	8	12	-	10.7	-	-	10.7	64
2	WB	173+65	6	12	-	8	-	-	8	60
URBAN										
3	EB	452+20	6	12	-	8	-	-	8	60
4	EB	460+00	12	12	-	-	16	-	16	72
5	WB	460+00	12	12	-	-	16	-	16	72
6	WB	469+00	6	12	-	8	-	-	8	60
7	WB	470+55	10	12	-	13.3	-	-	13.3	68
US 40 RURAL TOTALS					0	19	0	0	19	124
US 40 URBAN TOTALS					0	30	32	0	62	332
US 40 CLASS A 11" OVERALL TOTALS					0	49	32	0	81	456

PATCH NUMBER	LANE	STATION	LENGTH (FT)	WIDTH (FT)	CLASS B PATCHES, 10 INCH				3/4" TIE BARS (EACH)	WELDED WIRE REINFORCEMENT (SQ YD)	SAW CUTS (FT)	DOWELS 1 1/2" (EACH)
					TYPE I (SQ YD)	TYPE II (SQ YD)	TYPE III (SQ YD)	TYPE IV (SQ YD)				
US 51 (BEAR CREEK TO VETERANS AVE.)												
1	SBDL	30+00	25	12	-	-	-	33.3	12	33.3	86	20
2	SBDL	19+40	6	12	-	8	-	-	-	-	48	20
3	SBDL	19+05	15	12	-	-	20	-	7	20	66	20
4	SBDL	18+70	6	12	-	8	-	-	-	-	48	20
5	SBDL	15+75	6	12	-	8	-	-	-	-	48	20
6	NBPL	18+50	6	12	-	8	-	-	-	-	54	20
7	NBPL	25+00	6	12	-	8	-	-	-	-	54	20
8	NBDL	14+55	6	12	-	8	-	-	-	-	48	20
9	NBDL	14+50	6	12	-	8	-	-	-	-	48	20
10	NBDL	28+35	10	12	-	13.3	-	-	-	-	56	20
11	NBDL	28+60	6	12	-	8	-	-	-	-	48	20
12	NBDL	28+70	6	12	-	8	-	-	-	-	48	20
13	NBDL	29+05	6	12	-	8	-	-	-	-	48	20
14	NBDL	29+85	6	12	-	8	-	-	-	-	48	20
15	NBDL	30+00	6	12	-	8	-	-	-	-	48	20
16	NBDL	30+20	6	12	-	8	-	-	-	-	48	20
2L2W portion												
17	NB	37+10	6	12	-	8	-	-	-	-	48	20
18	NB	38+20	6	12	-	8	-	-	-	-	48	20
19	NB	48+85	6	12	-	8	-	-	-	-	48	20
20	NB	52+10	6	12	-	8	-	-	-	-	48	20
21	NB	55+50	6	12	-	8	-	-	-	-	48	20
22	NB	56+00	6	12	-	8	-	-	-	-	48	20
23	NB	60+10	6	12	-	8	-	-	-	-	48	20
24	SB	48+85	6	12	-	8	-	-	-	-	48	20
25	SB	52+10	6	12	-	8	-	-	-	-	48	20
26	SB	55+05	6	12	-	8	-	-	-	-	48	20
27	SB	55+50	12	12	-	-	16	-	-	16	60	20
28	SB	56+00	6	12	-	8	-	-	-	-	48	20
29	SB	60+10	6	12	-	8	-	-	-	-	48	20
US 51 CLASS B 10" TOTALS (ALL URBAN)					0	214	36	34	19	70	1480	580

PATCH NUMBER	LANE	STATION	LENGTH (FT)	WIDTH (FT)	CLASS B PATCHES, 12 INCH				3/4" TIE BARS (EACH)	WELDED WIRE REINFORCEMENT (SQ YD)	SAW CUTS (FT)	DOWELS 1 1/2" (EACH)
					TYPE I (SQ YD)	TYPE II (SQ YD)	TYPE III (SQ YD)	TYPE IV (SQ YD)				
US 40 (BOND CO. LINE TO ROCK ISLAND AVE.)												
RURAL												
1	EB	51+30	6	12	-	8	-	-	-	-	48	20
2	EB	51+60	10	12	-	13.3	-	-	-	-	56	20
3	EB	54+40	10	12	-	13.3	-	-	-	-	56	20
4	EB	67+05	6	12	-	8	-	-	-	-	48	20
5	EB	68+05	6	12	-	8	-	-	-	-	48	20
6	EB	73+10	6	12	-	8	-	-	-	-	48	20
7	EB	75+75	10	12	-	13.3	-	-	-	-	56	20
8	EB	83+15	6	12	-	8	-	-	-	-	48	20
9	EB	86+15	6	12	-	8	-	-	-	-	48	20
10	EB	86+80	6	12	-	8	-	-	-	-	48	20
11	EB	88+45	6	12	-	8	-	-	-	-	48	20
12	EB	90+45	6	12	-	8	-	-	-	-	48	20
13	EB	93+45	6	12	-	8	-	-	-	-	48	20
14	EB	100+55	6	12	-	8	-	-	-	-	48	20
15	EB	101+55	6	12	-	8	-	-	-	-	48	20
16	EB	106+90	6	12	-	8	-	-	-	-	48	20
17	EB	108+45	6	12	-	8	-	-	-	-	48	20
18	EB	109+45	6	12	-	8	-	-	-	-	48	20
19	EB	148+85	6	12	-	8	-	-	-	-	48	20
20	WB	44+80	8	12	-	10.7	-	-	-	-	52	20
21	WB	49+00	8	12	-	10.7	-	-	-	-	52	20
22	WB	54+20	16	12	-	-	21.3	-	7	21.3	68	20
23	WB	56+15	6	12	-	8	-	-	-	-	48	20
24	WB	57+25	6	12	-	8	-	-	-	-	48	20
25	WB	58+90	15	12	-	-	20	-	7	20	66	20
26	WB	59+20	10	12	-	13.3	-	-	-	-	56	20
27	WB	62+75	6	12	-	8	-	-	-	-	48	20
28	WB	67+05	6	12	-	8	-	-	-	-	48	20
29	WB	68+05	6	12	-	8	-	-	-	-	48	20
30	WB	73+10	6	12	-	8	-	-	-	-	48	20
31	WB	74+00	6	12	-	8	-	-	-	-	48	20
32	WB	75+75	10	12	-	13.3	-	-	-	-	56	20
33	WB	76+05	6	12	-	8	-	-	-	-	48	20
34	WB	83+15	6	12	-	8	-	-	-	-	48	20
35	WB	86+15	6	12	-	8	-	-	-	-	48	20
36	WB	86+80	6	12	-	8	-	-	-	-	48	20
37	WB	87+40	6	12	-	8	-	-	-	-	48	20
38	WB	88+45	6	12	-	8	-	-	-	-	48	20
39	WB	90+45	6	12	-	8	-	-	-	-	48	20
40	WB	93+45	6	12	-	8	-	-	-	-	48	20
41	WB	100+55	6	12	-	8	-	-	-	-	48	20
42	WB	101+55	6	12	-	8	-	-	-	-	48	20
43	WB	106+90	6	12	-	8	-	-	-	-	48	20
44	WB	108+45	6	12	-	8	-	-	-	-	48	20
URBAN												
45	WB	344+25	8	12	-	10.7	-	-	-	-	52	20
US 40 CLASS B 12" RURAL TOTALS					0	368	42	0	14	42	2198	880
US 40 CLASS B 12" URBAN TOTALS					0	11	0	0	0	0	52	20
US 40 CLASS B 12" OVERALL TOTALS					0	379	42	0	14	42	2250	900

\* FAP 322, FAS 1751, & FAU 8413

MODEL: Default  
FILE: \\mllpc-pw01\BIBID\ITC\Illinois\pwr\pwr\DOT\Documents\DOT Office\BIBID\74882\CADD\BIBID\CADD\BIBID\74882-she-schedule.dgn

USER NAME = stefenmk	DESIGNED -	REVISED -
	DRAWN -	REVISED -
PLOT SCALE = 100,0000' / in.	CHECKED -	REVISED -
PLOT DATE = 12/4/2018	DATE -	REVISED -

**STATE OF ILLINOIS  
DEPARTMENT OF TRANSPORTATION**

**SCHEDULE OF QUANTITIES**

SCALE: N/A SHEET 1 OF 4 SHEETS STA. TO STA.

F.A. RTE.	SECTION	COUNTY	TOTAL SHEETS	SHEET NO.
*	D7 PATCHING 2019-3 <td>FAYETTE <td>10</td> <td>4</td> </td>	FAYETTE <td>10</td> <td>4</td>	10	4
CONTRACT NO. 74882				
ILLINOIS FED. AID PROJECT				

PATCH NUMBER	LANE	STATION	LENGTH (FT)	WIDTH (FT)	CLASS B PATCHES, 10 INCH				3/4" TIE BARS (EACH)	WELDED WIRE REINFORCEMENT (SQ YD)	SAW CUTS (FT)	DOWELS 1 1/2" (EACH)
					TYPE I (SQ YD)	TYPE II (SQ YD)	TYPE III (SQ YD)	TYPE IV (SQ YD)				
US 40 (Bond Co. to County Rd. 600 E) BARE CONCRETE STARTS AT 370+15												
1	EB	371+20	6	12	-	8	-	-	-	-	48	20
2	EB	371+40	6	12	-	8	-	-	-	-	48	20
3	EB	371+90	6	12	-	8	-	-	-	-	48	20
4	EB	372+50	6	12	-	8	-	-	-	-	48	20
5	EB	376+00	6	12	-	8	-	-	-	-	48	20
6	EB	378+45	6	12	-	8	-	-	-	-	48	20
7	EB	379+75	6	12	-	8	-	-	-	-	48	20
8	EB	380+50	6	12	-	8	-	-	-	-	48	20
9	EB	381+55	6	12	-	8	-	-	-	-	48	20
10	EB	382+00	6	12	-	8	-	-	-	-	48	20
11	EB	382+30	6	12	-	8	-	-	-	-	48	20
12	EB	386+90	6	12	-	8	-	-	-	-	48	20
13	EB	387+30	6	12	-	8	-	-	-	-	48	20
14	EB	387+80	6	12	-	8	-	-	-	-	48	20
15	EB	388+30	6	12	-	8	-	-	-	-	48	20
16	EB	388+45	6	12	-	8	-	-	-	-	48	20
17	EB	389+00	6	12	-	8	-	-	-	-	48	20
18	EB	389+50	6	12	-	8	-	-	-	-	48	20
19	EB	390+00	6	12	-	8	-	-	-	-	48	20
20	EB	390+30	6	12	-	8	-	-	-	-	48	20
21	EB	390+65	6	12	-	8	-	-	-	-	48	20
22	EB	391+30	6	12	-	8	-	-	-	-	48	20
23	EB	391+60	6	12	-	8	-	-	-	-	48	20
24	EB	391+80	6	12	-	8	-	-	-	-	48	20
25	EB	392+00	6	12	-	8	-	-	-	-	48	20
26	EB	392+75	6	12	-	8	-	-	-	-	48	20
27	EB	393+00	6	12	-	8	-	-	-	-	48	20
28	EB	393+50	6	12	-	8	-	-	-	-	48	20
29	EB	393+80	6	12	-	8	-	-	-	-	48	20
30	EB	394+00	6	12	-	8	-	-	-	-	48	20
31	EB	394+25	6	12	-	8	-	-	-	-	48	20
32	WB	370+50	6	12	-	8	-	-	-	-	48	20
33	WB	371+20	6	12	-	8	-	-	-	-	48	20
34	WB	371+40	6	12	-	8	-	-	-	-	48	20
35	WB	371+90	6	12	-	8	-	-	-	-	48	20
36	WB	372+50	6	12	-	8	-	-	-	-	48	20
37	WB	376+00	6	12	-	8	-	-	-	-	48	20
38	WB	378+45	6	12	-	8	-	-	-	-	48	20
39	WB	379+75	6	12	-	8	-	-	-	-	48	20
40	WB	380+50	6	12	-	8	-	-	-	-	48	20
41	WB	381+55	6	12	-	8	-	-	-	-	48	20
42	WB	382+00	6	12	-	8	-	-	-	-	48	20
43	WB	386+90	6	12	-	8	-	-	-	-	48	20
44	WB	388+00	6	12	-	8	-	-	-	-	48	20
45	WB	388+45	6	12	-	8	-	-	-	-	48	20
46	WB	389+00	6	12	-	8	-	-	-	-	48	20
47	WB	389+50	6	12	-	8	-	-	-	-	48	20
48	WB	390+00	6	12	-	8	-	-	-	-	48	20
49	WB	390+65	6	12	-	8	-	-	-	-	48	20

PATCH NUMBER	LANE	STATION	LENGTH (FT)	WIDTH (FT)	CLASS B PATCHES, 10 INCH				3/4" TIE BARS (EACH)	WELDED WIRE REINFORCEMENT (SQ YD)	SAW CUTS (FT)	DOWELS 1 1/2" (EACH)
					TYPE I (SQ YD)	TYPE II (SQ YD)	TYPE III (SQ YD)	TYPE IV (SQ YD)				
50	WB	391+30	6	12	-	8	-	-	-	-	48	20
51	WB	391+60	6	12	-	8	-	-	-	-	48	20
52	WB	391+80	6	12	-	8	-	-	-	-	48	20
53	WB	392+00	6	12	-	8	-	-	-	-	48	20
54	WB	393+00	6	12	-	8	-	-	-	-	48	20
55	WB	393+50	6	12	-	8	-	-	-	-	48	20
56	WB	393+80	6	12	-	8	-	-	-	-	48	20
57	WB	394+00	6	12	-	8	-	-	-	-	48	20
Pine Ridge Dr. to where US 40 goes west (0 = Center of N&S piece where US 40 goes west)												
58	NB	00+51	6	14	-	9.3	-	-	-	-	54	24
59	NB	03+73	6	14	-	9.3	-	-	-	-	54	24
60	SB	04+46	6	14	-	9.3	-	-	-	-	54	24
61	SB	04+17	6	14	-	9.3	-	-	-	-	54	24
62	SB	03+76	6	14	-	9.3	-	-	-	-	54	24
63	SB	03+45	6	14	-	9.3	-	-	-	-	54	24
64	SB	02+96	6	14	-	9.3	-	-	-	-	54	24
65	SB	02+46	6	14	-	9.3	-	-	-	-	54	24
N & S piece of US 40 heading across I-70 (Starting station at 395+60 where US 40 goes west)												
66	NB	395+65	6	14	-	9.3	-	-	-	-	54	24
67	NBLTL	395+65	6	12	-	8	-	-	-	-	54	20
68	NB	395+90	6	14	-	9.3	-	-	-	-	54	24
69	NBLTL	395+90	6	12	-	8	-	-	-	-	54	20
70	NB	396+15	6	14	-	9.3	-	-	-	-	54	24
71	NBLTL	396+15	6	12	-	8	-	-	-	-	54	20
72	NBLTL	396+45	6	12	-	8	-	-	-	-	54	20
73	NB	396+65	6	14	-	9.3	-	-	-	-	54	24
74	NBLTL	396+65	6	12	-	8	-	-	-	-	54	20
75	NB	397+15	6	14	-	9.3	-	-	-	-	54	24
76	NBLTL	397+15	6	12	-	8	-	-	-	-	54	20
77	NB	397+65	6	14	-	9.3	-	-	-	-	54	24
78	NBLTL	397+65	6	12	-	8	-	-	-	-	54	20
79	NB	398+15	6	14	-	9.3	-	-	-	-	54	24
80	NB	398+40	6	14	-	9.3	-	-	-	-	54	24
81	NBLTL	398+40	6	12	-	8	-	-	-	-	54	20
82	NB	398+90	6	14	-	9.3	-	-	-	-	54	24
83	NBLTL	398+90	6	12	-	8	-	-	-	-	54	20
84	NBLTL	399+40	6	6	4	-	-	-	-	-	36	10
85	NB	399+90	6	14	-	9.3	-	-	-	-	54	24
86	NB	400+15	6	14	-	9.3	-	-	-	-	54	24
87	NB	400+40	6	14	-	9.3	-	-	-	-	54	24
88	NB	400+90	6	14	-	9.3	-	-	-	-	54	24
89	NB	401+15	6	14	-	9.3	-	-	-	-	54	24
90	NB	402+15	6	14	-	9.3	-	-	-	-	54	24
91	NB	402+15	6	20	-	13.3	-	-	-	-	72	28
92	NB	402+65	6	14	-	9.3	-	-	-	-	54	24
93	NBLTL	402+65	6	12	-	8	-	-	-	-	54	20
94	NBLTL	403+15	6	12	-	8	-	-	-	-	54	20
95	NBLTL	403+65	6	12	-	8	-	-	-	-	54	20
96	NBLTL	404+15	6	12	-	8	-	-	-	-	54	20
97	NBLTL	404+35	6	12	-	8	-	-	-	-	54	20

\* FAP 322, FAS 1751, & FAU 8413

MODEL: Default  
 FILE: \\mllc01\B&E\BID\TEC\Illinois\pwr\WIDOT\Documents\DOT\_Offices\IDirect\7\Projects\74882\CADD\B&E\DOT\74882-she-schedule.dgn

USER NAME = steffemk	DESIGNED -	REVISED -
	DRAWN -	REVISED -
PLOT SCALE = 100,0000 ' / in.	CHECKED -	REVISED -
PLOT DATE = 12/4/2018	DATE -	REVISED -

**STATE OF ILLINOIS  
DEPARTMENT OF TRANSPORTATION**

**SCHEDULE OF QUANTITIES**

SCALE: N/A SHEET 2 OF 4 SHEETS STA. TO STA.

F.A. RTE.	SECTION	COUNTY	TOTAL SHEETS	SHEET NO.
*	D7 PATCHING 2019-3 <td>FAYETTE <td>10</td> <td>5</td> </td>	FAYETTE <td>10</td> <td>5</td>	10	5
CONTRACT NO. 74882				
ILLINOIS FED. AID PROJECT				

PATCH NUMBER	LANE	STATION	LENGTH (FT)	WIDTH (FT)	CLASS B PATCHES, 10 INCH				3/4" TIE BARS (EACH)	WELDED WIRE REINFORCEMENT (SQ YD)	SAW CUTS (FT)	DOWELS 1 1/2" (EACH)
					TYPE I (SQ YD)	TYPE II (SQ YD)	TYPE III (SQ YD)	TYPE IV (SQ YD)				
98	NB	404+80	6	14	-	9.3	-	-	-	54	24	
99	NBLTL	404+80	6	12	-	8	-	-	-	54	20	
100	NB	405+40	6	14	-	9.3	-	-	-	54	24	
101	NB	409+95	6	14	-	9.3	-	-	-	54	24	
102	NB	410+30	6	14	-	9.3	-	-	-	54	24	
103	NB	410+90	6	14	-	9.3	-	-	-	54	24	
104	NB	411+15	6	14	-	9.3	-	-	-	54	24	
105	NB	411+45	6	14	-	9.3	-	-	-	54	24	
106	NB	411+60	6	14	-	9.3	-	-	-	54	24	
107	NB	411+85	6	14	-	9.3	-	-	-	54	24	
108	NB	412+60	6	14	-	9.3	-	-	-	54	24	
109	NB	412+90	6	14	-	9.3	-	-	-	54	24	
110	NB	416+15	6	14	-	9.3	-	-	-	54	24	
111	NB	417+15	6	14	-	9.3	-	-	-	54	24	
112	NB	417+45	6	14	-	9.3	-	-	-	54	24	
113	NB RADIAL	418+80	6	12	-	8	-	-	-	54	20	
114	NB RADIAL	419+12	6	12	-	8	-	-	-	54	20	
115	SB	395+90	6	14	-	9.3	-	-	-	54	24	
116	SB	397+35	6	14	-	9.3	-	-	-	54	24	
117	SB	398+95	6	14	-	9.3	-	-	-	54	24	
118	SB	399+15	6	14	-	9.3	-	-	-	54	24	
119	SB	399+65	6	14	-	9.3	-	-	-	54	24	
120	SB	399+90	6	14	-	9.3	-	-	-	54	24	
121	SB	400+15	6	14	-	9.3	-	-	-	54	24	
122	SB	400+90	6	14	-	9.3	-	-	-	54	24	
123	SB	401+15	6	14	-	9.3	-	-	-	54	24	
124	SB	401+70	6	14	-	9.3	-	-	-	54	24	
125	SB	403+65	6	14	-	9.3	-	-	-	54	24	
126	SB	403+90	6	14	-	9.3	-	-	-	54	24	
127	SB	404+35	6	14	-	9.3	-	-	-	54	24	
128	SB	404+65	6	14	-	9.3	-	-	-	54	24	
129	SB	404+90	6	14	-	9.3	-	-	-	54	24	
130	SB	414+15	6	14	-	9.3	-	-	-	54	24	
131	SB	415+35	6	14	-	9.3	-	-	-	54	24	
132	SB	415+85	6	14	-	9.3	-	-	-	54	24	
133	SB	416+35	6	14	-	9.3	-	-	-	54	24	
134	SBLTL	416+35	6	12	-	8	-	-	-	54	20	
135	SB	416+85	6	14	-	9.3	-	-	-	54	24	
136	SBLTL	416+85	6	12	-	8	-	-	-	54	20	
137	SB	417+15	6	14	-	9.3	-	-	-	54	24	
138	SBLTL	418+35	6	12	-	8	-	-	-	54	20	
Where US 40 goes east to W. Jefferson St. (419+60 = Center of Stop light where US 40 goes east)												
139	NB	426+65	6	14	-	9.3	-	-	-	54	24	
140	NB	425+80	6	14	-	9.3	-	-	-	54	24	
141	NB	425+15	6	14	-	9.3	-	-	-	54	24	
142	NB	424+95	6	14	-	9.3	-	-	-	54	24	
143	NB	424+70	6	14	-	9.3	-	-	-	54	24	
144	NB	424+40	6	14	-	9.3	-	-	-	54	24	
145	NB	424+15	6	14	-	9.3	-	-	-	54	24	
146	NB	423+65	6	14	-	9.3	-	-	-	54	24	

PATCH NUMBER	LANE	STATION	LENGTH (FT)	WIDTH (FT)	CLASS B PATCHES, 10 INCH				3/4" TIE BARS (EACH)	WELDED WIRE REINFORCEMENT (SQ YD)	SAW CUTS (FT)	DOWELS 1 1/2" (EACH)
					TYPE I (SQ YD)	TYPE II (SQ YD)	TYPE III (SQ YD)	TYPE IV (SQ YD)				
147	NB	423+45	6	14	-	9.3	-	-	-	-	54	24
148	NB	423+15	6	14	-	9.3	-	-	-	-	54	24
149	NB	422+90	6	14	-	9.3	-	-	-	-	54	24
150	NB	422+66	6	14	-	9.3	-	-	-	-	54	24
151	NB	422+15	6	14	-	9.3	-	-	-	-	54	24
152	NB	421+65	6	14	-	9.3	-	-	-	-	54	24
153	NB	421+15	6	14	-	9.3	-	-	-	-	54	24
154	NB	420+35	6	14	-	9.3	-	-	-	-	54	24
155	SB	420+38	6	14	-	9.3	-	-	-	-	54	24
156	SB	420+64	6	14	-	9.3	-	-	-	-	54	24
157	SB	421+15	6	14	-	9.3	-	-	-	-	54	24
158	SB	421+65	6	14	-	9.3	-	-	-	-	54	24
159	SB	421+95	6	14	-	9.3	-	-	-	-	54	24
160	SB	422+15	6	14	-	9.3	-	-	-	-	54	24
161	SB	422+45	6	14	-	9.3	-	-	-	-	54	24
162	SB	422+65	6	14	-	9.3	-	-	-	-	54	24
163	SB	422+95	6	14	-	9.3	-	-	-	-	54	24
164	SB	423+15	6	14	-	9.3	-	-	-	-	54	24
165	SB	423+15	6	14	-	9.3	-	-	-	-	54	24
166	SB	423+45	6	14	-	9.3	-	-	-	-	54	24
167	SB	423+65	6	14	-	9.3	-	-	-	-	54	24
168	SB	423+85	6	14	-	9.3	-	-	-	-	54	24
169	SB	424+15	6	14	-	9.3	-	-	-	-	54	24
170	SB	424+35	6	14	-	9.3	-	-	-	-	54	24
171	SB	424+65	6	14	-	9.3	-	-	-	-	54	24
172	SB	424+90	6	14	-	9.3	-	-	-	-	54	24
173	SB	424+90	6	14	-	9.3	-	-	-	-	54	24
174	SB	425+17	6	14	-	9.3	-	-	-	-	54	24
175	SB	425+80	6	14	-	9.3	-	-	-	-	54	24
176	SB	426+65	6	14	-	9.3	-	-	-	-	54	24
US 40 (W. Randolph St. to Rock Island Ave.)												
177	EB	421+50	6	12	-	8	-	-	-	-	48	20
178	EB	424+30	6	14	-	9.3	-	-	-	-	54	24
179	EB	425+15	6	14	-	9.3	-	-	-	-	54	24
180	EB	428+60	6	12	-	8	-	-	-	-	48	20
181	EB	428+85	6	12	-	8	-	-	-	-	48	20
182	EB	429+10	6	12	-	8	-	-	-	-	48	20
183	EB	429+55	6	12	-	8	-	-	-	-	48	20
184	EB	430+15	6	12	-	8	-	-	-	-	48	20
185	EB	430+40	6	12	-	8	-	-	-	-	48	20
186	EB	432+60	6	12	-	8	-	-	-	-	48	20
187	EB	434+35	6	12	-	8	-	-	-	-	48	20
188	EB	434+85	6	12	-	8	-	-	-	-	48	20
189	EB	436+10	6	12	-	8	-	-	-	-	48	20
190	EB	437+80	6	12	-	8	-	-	-	-	48	20
191	EB	438+80	6	12	-	8	-	-	-	-	48	20
192	EB	441+80	6	12	-	8	-	-	-	-	48	20
193	EB	442+00	6	12	-	8	-	-	-	-	48	20
194	EB	442+50	6	12	-	8	-	-	-	-	48	20
195	EB	443+75	6	12	-	8	-	-	-	-	48	20

\* FAP 322, FAS 1751, & FAU 8413

MODEL: Default  
FILE: \\mllc01\B&E\BID\TEC\Illinois\gov\p\WIDOT\Documents\DOT\_Offices\Illinet\7\Projects\174882\CADD\data\CAD\patches\174882-she-schedule.dgn

USER NAME = steffenmk	DESIGNED -	REVISED -
	DRAWN -	REVISED -
PLOT SCALE = 100.0000' / in.	CHECKED -	REVISED -
PLOT DATE = 12/4/2018	DATE -	REVISED -

**STATE OF ILLINOIS  
DEPARTMENT OF TRANSPORTATION**

**SCHEDULE OF QUANTITIES**

SCALE: N/A SHEET 3 OF 4 SHEETS STA. TO STA.

F.A. RTE.	SECTION	COUNTY	TOTAL SHEETS	SHEET NO.
*	D7 PATCHING 2019-3 <td>FAYETTE <td>10</td> <td>6</td> </td>	FAYETTE <td>10</td> <td>6</td>	10	6
CONTRACT NO. 74882				
ILLINOIS FED. AID PROJECT				

MODEL: Default  
 FILE: \\mhc-pw\illinois\BID\NTEC\Illinois\gov\PWIDOT\Documents\DOT\_Offices\Director\74882\CADD\data\CAD\patches\DOT74882-shc-schedule.dgn

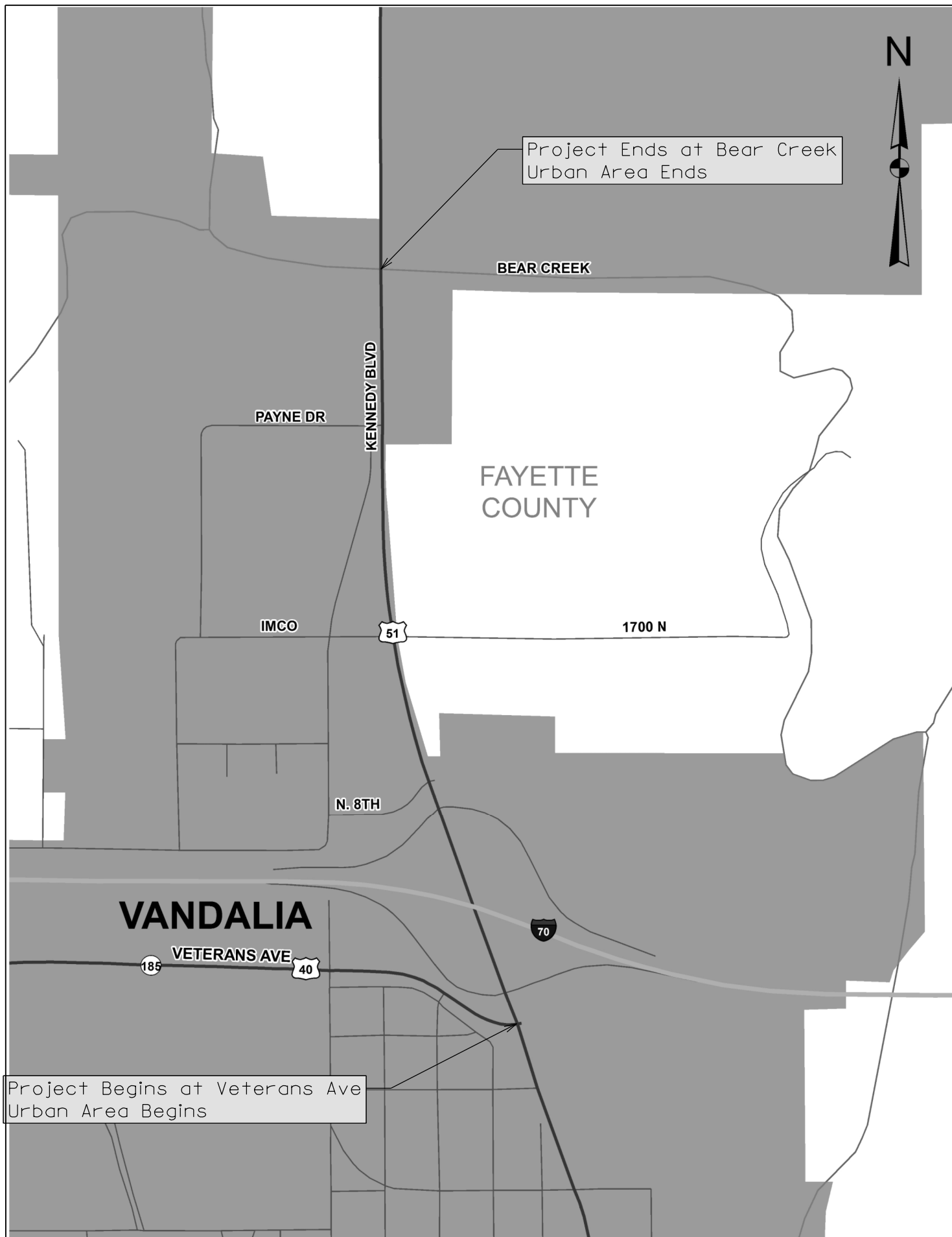
PATCH NUMBER	LANE	STATION	LENGTH (FT)	WIDTH (FT)	CLASS B PATCHES, 10 INCH				3/4" TIE BARS (EACH)	WELDED WIRE REINFORCEMENT (SQ YD)	SAW CUTS (FT)	DOWELS 1 1/2" (EACH)
					TYPE I (SQ YD)	TYPE II (SQ YD)	TYPE III (SQ YD)	TYPE IV (SQ YD)				
196	EB	444+25	6	12	-	8	-	-	-	-	48	20
197	EB	446+05	6	12	-	8	-	-	-	-	48	20
198	EB	446+25	6	12	-	8	-	-	-	-	48	20
199	EB	446+45	6	12	-	8	-	-	-	-	48	20
200	EB	446+75	6	12	-	8	-	-	-	-	48	20
201	EB	447+00	6	12	-	8	-	-	-	-	48	20
202	EB	447+25	6	12	-	8	-	-	-	-	48	20
203	EB	447+55	6	12	-	8	-	-	-	-	48	20
204	EB	448+00	6	12	-	8	-	-	-	-	48	20
205	EB	448+50	6	12	-	8	-	-	-	-	48	20
206	EB	449+00	6	12	-	8	-	-	-	-	48	20
207	WB	420+80	6	12	-	8	-	-	-	-	48	20
208	WBLTL	421+00	6	12	-	8	-	-	-	-	54	20
209	WB	421+75	6	14	-	9.3	-	-	-	-	54	24
210	WB	422+80	6	14	-	9.3	-	-	-	-	54	24
211	WB	423+25	6	14	-	9.3	-	-	-	-	54	24
212	WB	423+60	6	14	-	9.3	-	-	-	-	54	24
213	WB	424+30	6	14	-	9.3	-	-	-	-	54	24
214	WB	425+15	6	14	-	9.3	-	-	-	-	54	24
215	WB	425+80	6	14	-	9.3	-	-	-	-	54	24
216	WB	428+60	6	12	-	8	-	-	-	-	48	20
217	WB	428+85	6	12	-	8	-	-	-	-	48	20
218	WB	429+90	6	12	-	8	-	-	-	-	48	20
219	WB	432+60	6	12	-	8	-	-	-	-	48	20
220	WB	434+35	6	12	-	8	-	-	-	-	48	20
221	WB	441+80	6	12	-	8	-	-	-	-	48	20
222	WB	442+00	6	12	-	8	-	-	-	-	48	20
223	WB	442+50	6	12	-	8	-	-	-	-	48	20
224	WB	444+05	6	12	-	8	-	-	-	-	48	20
225	WB	446+05	6	12	-	8	-	-	-	-	48	20
226	WB	446+25	6	12	-	8	-	-	-	-	48	20
227	WB	447+00	6	12	-	8	-	-	-	-	48	20
228	WB	447+25	6	12	-	8	-	-	-	-	48	20
229	WB	447+55	6	12	-	8	-	-	-	-	48	20
230	WB	448+00	6	12	-	8	-	-	-	-	48	20
231	WB	448+50	6	12	-	8	-	-	-	-	48	20
232	WB	449+00	6	12	-	8	-	-	-	-	48	20
US 40 CLASS B 10" TOTALS (ALL URBAN)					4	1991	0	0	0	0	11910	5062

\* FAP 322, FAS 1751, & FAU 8413

USER NAME = steffenmk PLOT SCALE = 100.0000' / in. PLOT DATE = 12/4/2018	DESIGNED - DRAWN - CHECKED - DATE -	REVISED - REVISED - REVISED - REVISED -	<b>STATE OF ILLINOIS</b> <b>DEPARTMENT OF TRANSPORTATION</b>	<b>SCHEDULE OF QUANTITIES</b> SCALE: N/A    SHEET 4 OF 4 SHEETS    STA.    TO STA.	F.A. RTE. SECTION COUNTY TOTAL SHEETS SHEET NO.	D7 PATCHING 2019-3 FAYETTE 10 7	CONTRACT NO. 74882 ILLINOIS FED. AID PROJECT
--------------------------------------------------------------------------------	----------------------------------------------	--------------------------------------------------	-----------------------------------------------------------------	---------------------------------------------------------------------------------------	-------------------------------------------------------------	------------------------------------------	-------------------------------------------------







MODEL: Default  
 FILE: \\mhc-pw\il08a\EBID\NTEC\Illinois.gov\PWIDOT\Documents\DOT\_Offices\Director\7\Projects\74882\CADDData\CAD\pkcs\74882\Project-Limit-Location-Map.pblan.dgn

\* FAP 322, FAS 1751, & FAU 8413

USER NAME = steffemk	DESIGNED -	REVISED -
	DRAWN -	REVISED -
PLOT SCALE = 100,0000' / in.	CHECKED -	REVISED -
PLOT DATE = 12/4/2018	DATE -	REVISED -

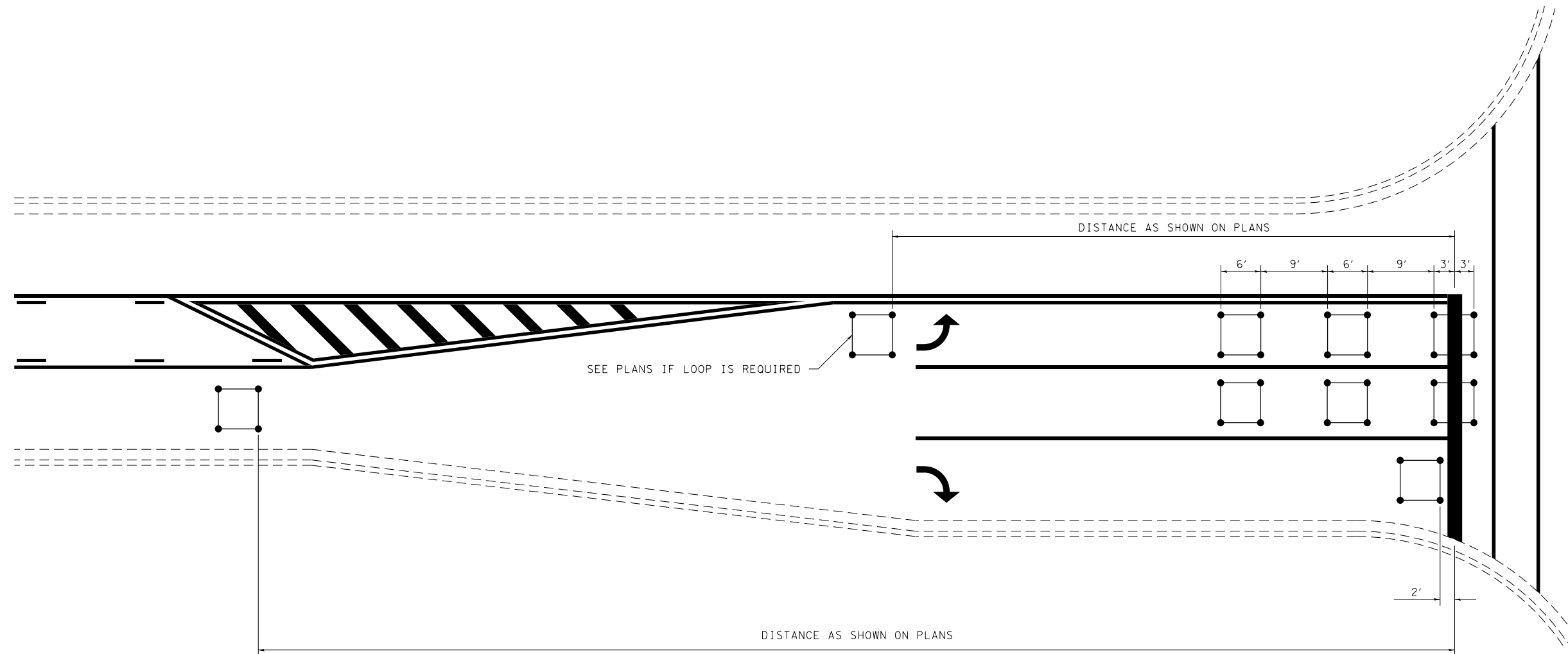
DESIGNED -	REVISED -
DRAWN -	REVISED -
CHECKED -	REVISED -
DATE -	REVISED -

**STATE OF ILLINOIS**  
**DEPARTMENT OF TRANSPORTATION**

<b>PROJECT LIMITS LOCATION MAP (US 51)</b>			
SCALE: N/A	SHEET 2	OF 2 SHEETS	STA. TO STA.

F.A. RTE.	SECTION	COUNTY	TOTAL SHEETS	SHEET NO.
*	D7 PATCHING 2019-3	FAYETTE	10	9
CONTRACT NO. 74882				
ILLINOIS FED. AID PROJECT				

# TYPICAL APPLICATION OF DETECTOR LOOPS



**NOTE:**

1. EACH LOOP SHALL HAVE ITS OWN HOMERUN TO THE GULFBOX/HANDHOLE.
2. LOOPS SHOULD BE CENTERED IN EACH LANE.
3. USE 6' BY 6' LOOPS FOR LANE WIDTHS OF 11' OR GREATER.
4. USE 5' BY 5' LOOPS IF LANE WIDTH IS LESS THAN 11'.

NOT TO SCALE

•FAP 322, FAS 1751, & FAU 8413

**DISTRICT 7 DETAIL NO. 88600100**

FILE NAME =	USER NAME = steffenmk	DESIGNED -	REVISED - MKS 4-08
p:\11\084EBIDINTEG.illinois.gov\PIWID\Documents\DOT Offices\District 7\Projects\74882\Drawings\CABsheets\0774882-sht-Detector Loops.dgn		DRAWN -	REVISIONS -
	PLOT SCALE = 100.0000' / 1in.	CHECKED -	REVISED -
	PLOT DATE = 12/4/2018	DATE -	REVISED -

**STATE OF ILLINOIS  
DEPARTMENT OF TRANSPORTATION**

**TYPICAL APPLICATIONS OF DETECTOR LOOPS**

SCALE: N/A SHEET NO. OF SHEETS STA. TO STA.

F.A. RTE.	SECTION	COUNTY	TOTAL SHEETS	SHEET NO.
•	D7 PATCHING 2019-3	FAYETTE	10	10
			CONTRACT NO. 74882	
FED. ROAD DIST. NO.		ILLINOIS FED. AID PROJECT		