

SUMMARY OF QUANTITIES			URBAN TOTAL QUANTITIES	CONSTRUCTION TYPE CODE				
CODE NO	ITEM	UNIT		ROADWAY 005 80%FED 20%STATE				
* 78000200	THERMOPLASTIC PAVEMENT MARKING - LINE 4"	FOOT	87130	87130				
* 78000400	THERMOPLASTIC PAVEMENT MARKING - LINE 6"	FOOT	7739	7739				
* 78000500	THERMOPLASTIC PAVEMENT MARKING - LINE 8"	FOOT	1045	1045				
* 78000600	THERMOPLASTIC PAVEMENT MARKING - LINE 12"	FOOT	3219	3219				
* 78000650	THERMOPLASTIC PAVEMENT MARKING - LINE 24"	FOOT	2500	2500				
* 78100100	RAISED REFLECTIVE PAVEMENT MARKER	EACH	1300	1300				
78300200	RAISED REFLECTIVE PAVEMENT MARKER REMOVAL	EACH	1000	1000				
* 85000200	MAINTENANCE OF EXISTING TRAFFIC SIGNAL INSTALLATION	EACH	13	13				
* 88600600	DETECTOR LOOP REPLACEMENT	FOOT	5904	5904				
* 89500400	RELOCATE EXISTING PEDESTRIAN PUSH-BUTTON	EACH	7	7				
* 89502376	REBUILD EXISTING HANDHOLE	EACH	17	17				
89502385	REMOVE EXISTING CONCRETE FOUNDATION	EACH	1	1				
* 89502382	REMOVE EXISTING DOUBLE HANDHOLE	EACH	1	1				

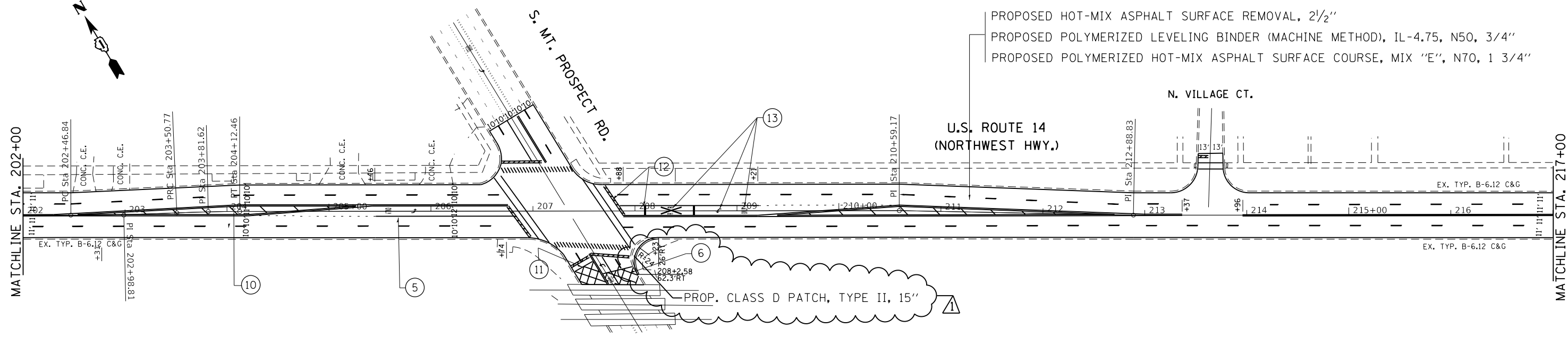
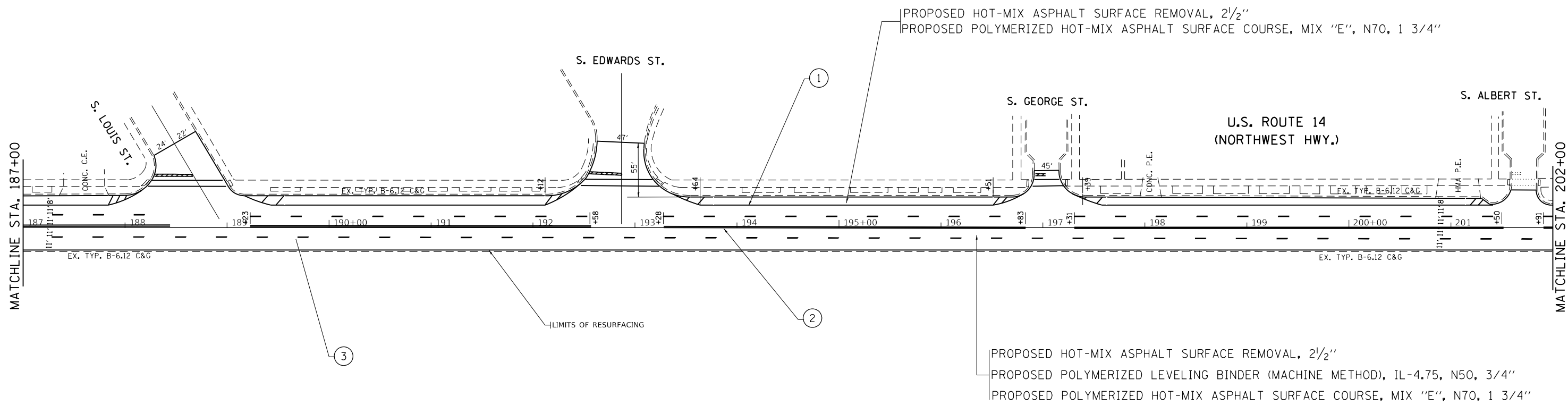
SUMMARY OF QUANTITIES			URBAN TOTAL QUANTITIES	CONSTRUCTION TYPE CODE				
CODE NO	ITEM	UNIT		ROADWAY 005 80%FED 20%STATE				
X0320050	CONSTRUCTION LAYOUT (SPECIAL)	L SUM	1	1				
X0326864	BRICK SIDEWALK REMOVAL	SO FT	3341	3341				
X0327611	REMOVE AND REINSTALL BRICK PAVER	SO FT	2953	2953				
X2600012	REMOVE AND RELOCATE SIGN PANEL AND POLE ASSEMBLY	EACH	2	2				
X5537800	STORM SEWERS TO BE CLEANED 12"	FOOT	1200	1200				
X6030310	FRAMES AND LIDS TO BE ADJUSTED (SPECIAL)	EACH	120	120				
X7030005	TEMPORARY PAVEMENT MARKING REMOVAL	SO FT	38893	38893				
Z0004562	COMBINATION CONCRETE CURB AND GUTTER REMOVAL AND REPLACEMENT	FOOT	7975	7975				
Z0018500	DRAINAGE STRUCTURES TO BE CLEANED	EACH	120	120				
Z0030850	TEMPORARY INFORMATION SIGNING	SO FT	308.4	308.4				
Z0033700	LONGITUDINAL JOINT SEALANT	FOOT	45500	45500				
Z0048665	RAILROAD PROTECTIVE LIABILITY INSURANCE	L SUM	1	1				
Z0076600	TRAINEES	HOUR	500	500				
Z0076604	TRAINEES TRAINING PROGRAM GRADUATE	HOUR	500	500				
	△ NON PARTICIPATING							
	* SPECIALTY ITEM							

FILE NAME :	USER NAME :	DESIGNED :	REVISED :
Default		DATE :	REVISED :

**STATE OF ILLINOIS  
DEPARTMENT OF TRANSPORTATION**

SUMMARY OF QUANTITIES			
SCALE:	SHEET NO. OF SHEETS	STA.	TOT SHEETS

F.A. RTE.	SECTION	COUNTY	TOTAL SHEETS	SHEET NO.
3512	(86)S.W-1187Y & 88YRS-3	COOK	81	5
CONTRACT NO. 60T49				
FED. ROAD DIST. NO. 1 ILLINOIS FED. AID PROJECT				



- ① PROP. THERMO. PMK. 4", LINE, WHITE (TYP.)
- ② PROP. THERMO. PMK. 4", DOUBLE YELLOW (TYP.)
- ③ PROP. THERMO. PMK. 4", SKIP DASH, WHITE (10' LINE-30' SPACE) (TYP.)
- ④ PROP. THERMO. PMK. 4", LINE, YELLOW (TYP.)
- ⑤ PROP. THERMO. PMK. 6", LINE, WHITE (TYP.)
- ⑥ PROP. THERMO. PMK. 6", DIAGONALS, WHITE (45°, 8' C-C) (TYP.)
- ⑦ PROP. THERMO. PMK. 6", DOTTED, WHITE (2' DASH-6' SPACE) (TYP.)
- ⑧ PROP. THERMO. PMK. 8", LINE, WHITE (TYP.)
- ⑨ PROP. THERMO. PMK. 12", DIAGONALS, WHITE 45°, 20' C-C) (TYP.)
- ⑩ PROP. THERMO. PMK. 12", DIAGONALS, YELLOW 45°, 5 EQUALLY SPACED (TYP.)
- ⑪ PROP. THERMO. PMK. 12", LINE, WHITE, 3' C-C (TYP.)
- ⑫ PROP. THERMO. PMK. 24", STOP BAR, WHITE (TYP.)
- ⑬ PROP. THERMO. PMK. LETTERS & SYMBOLS, WHITE (TYP.)

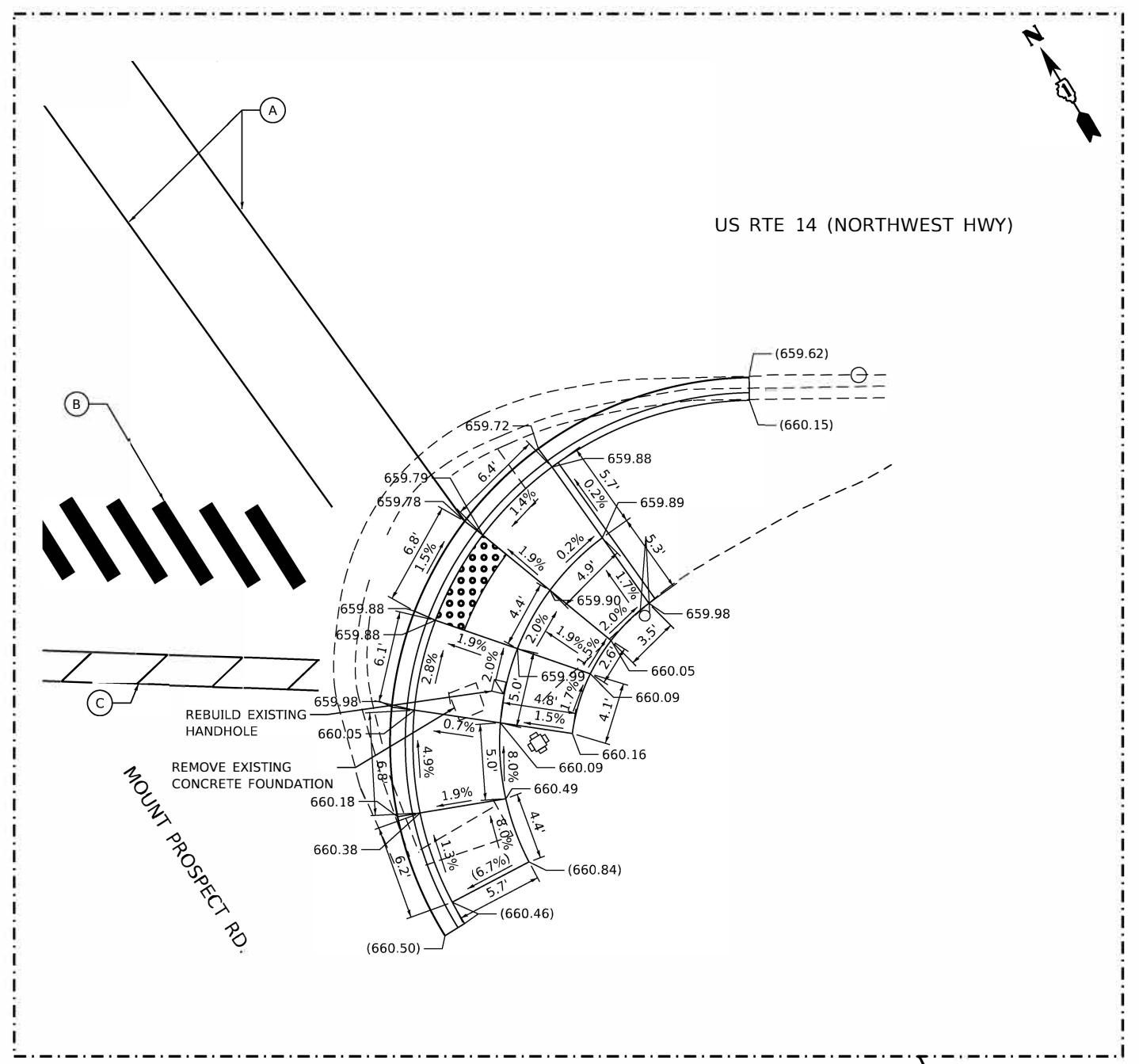
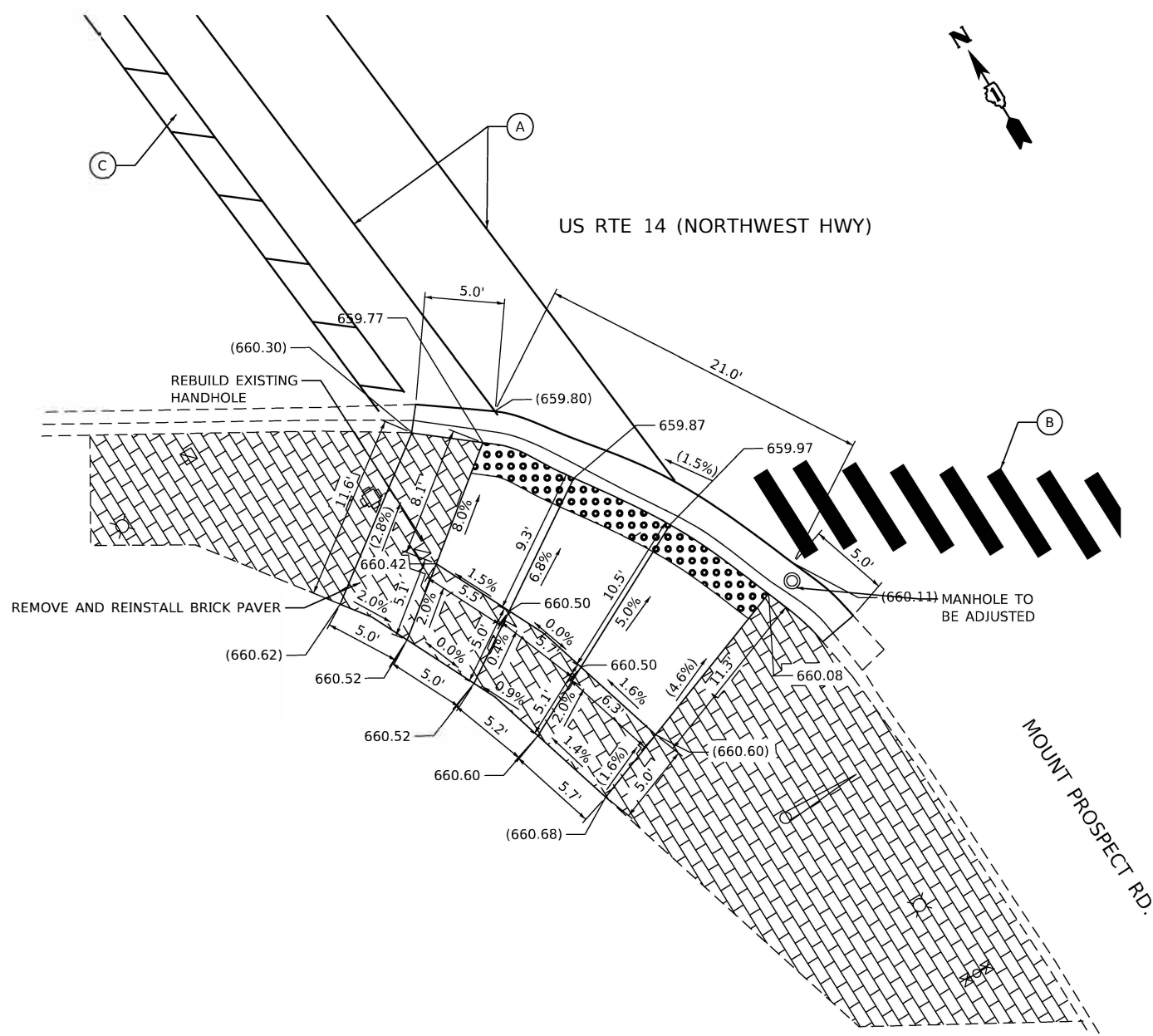
FILE NAME =	USER NAME = guillaumefp	DESIGNED -	REVISED -  2/14/2019
pw:\IL\084EBIDINTEG\Illinois.gov\PWIDOT\Documents\DOT Offices\District 1\Projects\DI36612\Drawings\Design\DI36612-sht-plen.dgn		CHECKED -	REVISED -
Default	PLOT DATE = 2/14/2019	DATE -	REVISED -

**STATE OF ILLINOIS  
DEPARTMENT OF TRANSPORTATION**

<b>U.S. RTE. 14 (NORTHWEST HWY.)</b>			
<b>ARLINGTON HTS. RD. U.S. RTE. 45 (RIVER RD.)</b>			
SCALE: 1"=50'	SHEET	OF	SHEETS
	STA. 177+00	TO	STA. 207+00

F.A.U. RTE.	SECTION	COUNTY	TOTAL SHEETS	SHEET NO.
3512	1861SW-1387Y & 88Y1R5-3	COOK	81	13
CONTRACT NO. 60T49				
ILLINOIS FED. AID PROJECT				

FILE NAME = D:\Engineering\Live\Projects\13843.IDOT DUR RES\Work D-r-dar 8\CADD\CADD Sheets\Civil\13843-149-ht-ADA-AES US14 MOUNT PROSPECT RD-SOUTH.dgn



**PAVEMENT MARKING LEGEND**

- (A) THERMOPLASTIC PAVEMENT MARKING- LINE 6" (CROSSWALK, WHITE)
- (B) THERMOPLASTIC PAVEMENT MARKING- LINE 12" (CROSSWALK, WHITE)
- (C) THERMOPLASTIC PAVEMENT MARKING- LINE 24" (STOP BAR, WHITE)

**LEGEND**

- PROPOSED SIDEWALK
- PROPOSED SIDE CURB
- EXISTING ELEVATION/SLOPE
- EXISTING BRICK SIDEWALK TO REMAIN
- DETECTABLE WARNINGS
- SIDEWALK REMOVAL REPLACE W/ TOPSOIL & SOD
- EXISTING R.O.W.
- EXISTING BRICK SIDEWALK REMOVAL

TBM #36  
 EAST BOLT ON FIRE HYDRANT AT NORTHEAST CORNER OF MOUNT PROSPECT RD AND  
 US RTE 14 (NORTHWEST HWY)  
 ELEV.: 659.91  
 N: 1963553.5540  
 E: 1096191.3070

TBM #36  
 EAST BOLT ON FIRE HYDRANT AT NORTHEAST CORNER OF MOUNT PROSPECT RD AND  
 US RTE 14 (NORTHWEST HWY)  
 ELEV.: 659.91  
 N: 1963553.5540  
 E: 1096191.3070



USER NAME = johnn	DESIGNED - MN	REVISED - 2/08/2019 SAT
DRAWN - JN	REVISIONS -	
PLOT SCALE = 10.0000' / in.	CHECKED - TGM	REVISIONS -
PLOT DATE = 2/8/2019	DATE - 09/21/2018	REVISIONS -

**STATE OF ILLINOIS  
 DEPARTMENT OF TRANSPORTATION**

**U.S. RTE. 14 (NORTHWEST HWY.)  
 SIDEWALK RAMP DETAILS - MOUNT PROSPECT RD. - SOUTH**  
 SCALE: 1" = 1' SHEET OF SHEETS STA. TO STA.

F.A.U. RTE.	SECTION	COUNTY	TOTAL SHEETS	SHEET NO.
3512	186[SW-1]87Y & 88Y]RS-3	COOK	81	67
CONTRACT NO. 60T49				
ILLINOIS FED. AID PROJECT				