

STATE OF ILLINOIS
DEPARTMENT OF TRANSPORTATION

PROPOSED HIGHWAY PLANS

FAP ROUTE 681 (IL 116)
SECTION (113, 114)
PROJECT STP-ZTW0 (091)
MICROSURFACING (1-PASS) FULL WIDTH
LIVINGSTON COUNTY

C-93-031-19

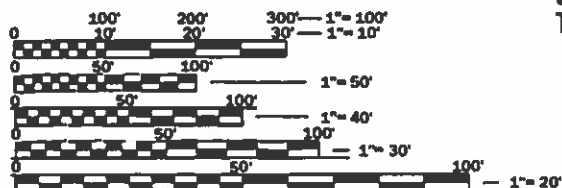
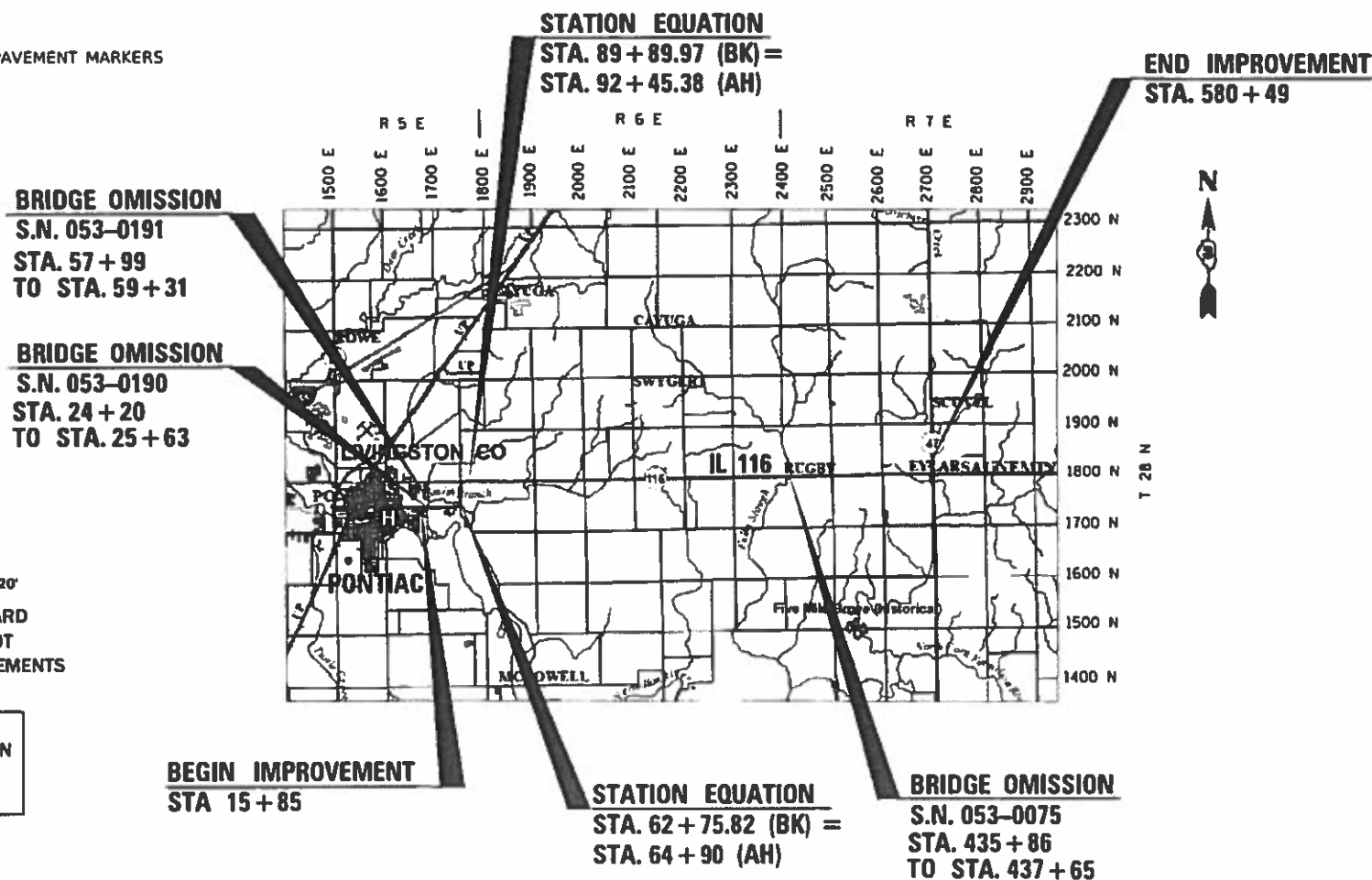
F.A.P. RTE.	SECTION	COUNTY	TOTAL SHEETS	SHEET NO.
681	(113, 114)	LIVINGSTON	12	1
CONTRACT NO. 66J53				

INDEX

1	COVER SHEET
2	GENERAL NOTES
3-4	SUMMARY OF QUANTITIES
5	TYPICALS
6-7	SCHEDULES
8-10	PERMANENT SURVEY MARKERS - TIE POINTS
11	SCHEMATIC
12	DETAILS

LIST OF ILLINOIS DOT HIGHWAY STANDARDS

000001-07	STANDARD SYMBOLS, ABBREVIATIONS AND PATTERNS
001006	DECIMAL OF AN INCH AND OF A FOOT
701001-02	OFF-ROAD OPERATIONS 2L, 2W, MORE THAN 15' (4.5 m) AWAY
701006-05	OFF-ROAD OPERATIONS 2L, 2W, 15' (4.5 m) TO 24" (600 mm) FROM PAVEMENT EDGE
701301-04	LANE CLOSURE, 2L, 2W, SHORT TIME OPERATIONS
701306-04	LANE CLOSURE, 2L, 2W, SLOW MOVING OPERATIONS DAY ONLY, FOR SPEEDS ≥ 45 MPH
701311-03	LANE CLOSURE, 2L, 2W, MOVING OPERATIONS - DAY ONLY
701501-06	URBAN LANE CLOSURE, 2L, 2W, UNDIVIDED
701901-08	TRAFFIC CONTROL DEVICES
780001-05	TYPICAL PAVEMENT MARKINGS
781001-04	TYPICAL APPLICATIONS RAISED REFLECTIVE PAVEMENT MARKERS



FULL SIZE PLANS HAVE BEEN PREPARED USING STANDARD ENGINEERING SCALES. REDUCED SIZED PLANS WILL NOT CONFORM TO STANDARD SCALES. IN MAKING MEASUREMENTS ON REDUCED PLANS, THE ABOVE SCALES MAY BE USED.

J.U.L.I.E.
JOINT UTILITY LOCATION INFORMATION FOR EXCAVATION
1-800-492-0123
OR 811

PROJECT ENGINEER: BRAD DUNCAN, P.E.
UNIT CHIEF: JESSY JEAN
DISTRICT 3 NO. (815) 434-6131
CONTRACT NO. 66J53

GROSS LENGTH = 55,994.41 FT. = 10.61 MILE
NET LENGTH = 55,540.41 FT. = 10.52 MILE

FUNCTIONAL CLASSIFICATION
MINOR ARTERIAL
2017 ADT=2,410
P.V.= 89.76% S.U.= 6.14% M.U.= 4.10%

STATE OF ILLINOIS
DEPARTMENT OF TRANSPORTATION

SUBMITTED 12-6-2018
Markel
REGIONAL ENGINEER

Feb 1 2019
ac E.A. EK
ENGINEER OF DESIGN AND ENVIRONMENT

Feb 1 2019
Paul P. Chy
DIRECTOR OF HIGHWAYS PROJECT IMPLEMENTATION

PRINTED BY THE AUTHORITY
OF THE STATE OF ILLINOIS

GENERAL NOTES

THE ENGINEER WILL BE THE SOLE JUDGE CONCERNING CURING TIME FOR THE MICRO-SURFACING AND WHEN THE ROADWAY WILL BE OPENED TO TRAFFIC.

ANY REFERENCE TO A STANDARD IN THESE PLANS SHALL BE INTERPRETED TO MEAN THE EDITION AS INDICATED BY THE SUBNUMBER SHOWN IN THE LIST OF STANDARDS OR THE COPY INCLUDED IN THESE PLANS.

THE AGGREGATES FOR THE SURFACE LIFT OF MICRO-SURFACING SHALL MEET THE FRICTION AGGREGATE REQUIREMENTS FOR MIXTURE C IN ARTICLE 1004.03(a).

THE FOLLOWING RATES OF APPLICATION HAVE BEEN USED IN CALCULATING PLAN QUANTITIES:

MIX FOR CRACKS, JTS & FLGWYS	0.0003	TONS / SQ YD
MICRO-SURFACING, SINGLE PASS	20	LBS / SQ YD

THE CONTRACTOR SHALL CONTACT JULIE AT LEAST 48 HOURS PRIOR TO EXCAVATION TO DETERMINE WHICH UTILITIES ARE IN THE AREA.

IT IS THE RESPONSIBILITY OF THE RE TO LOCATE ANY ADDITIONAL BUMPS AND CRACKS TO BE REMOVED OR SEALED PRIOR TO MICROSURFACING OPERATIONS.

STATE OF ILLINOIS
DEPARTMENT OF TRANSPORTATION
DISTRICT THREE
AS BUILT INFORMATION

SUPERVISING CONSTRUCTION FIELD ENGINEER

RESIDENT ENGINEER / TECHNICIAN

START & END DATES
OF CONSTRUCTION:

INSPECTORS:

STATE OF ILLINOIS
DEPARTMENT OF TRANSPORTATION
DISTRICT THREE

PREPARED BY: *Don Benoit*
DISTRICT STUDIES & PLANS ENGINEER

DATE: 12-6-18

EXAMINED BY: *ABV*
DISTRICT CONSTRUCTION ENGINEER

Michael Ashby
DISTRICT MATERIALS ENGINEER

Ross Johnson
DISTRICT OPERATIONS ENGINEER

FILE NAME	USER NAME = jeanl	DESIGNED -	REVISED -
p:\11\084E81D1\EG Illinois.gov\PW\DOT Documents\DOT Office\District 3\Projects\366J53\CADData\366J53-shi-cd		DRAWN -	REVISED -
De'aul	PLOT SCALE = 100.0000" = 1"	CHECKED -	REVISED -
	PLOT DATE = 12/4/2018	DATE -	REVISED -

STATE OF ILLINOIS
DEPARTMENT OF TRANSPORTATION

GENERAL NOTES

SCALE: SHEET OF SHEETS STA. TO STA.

F.A.P. RTE.	SECTION	COUNTY	TOTAL SHEETS	SHEET NO.
681	(113, 114)	LIVINGSTON	12	2
CONTRACT NO. 66J53				
ILLINOIS FED. AID PROJECT				

CODE NO.	ITEM	UNIT	TOTAL QUANTITY	CONSTRUCTION CODE	
				80% FEDERAL 20% STATE ROADWAY	80% FEDERAL 20% STATE ROADWAY
				0005	0005
				URBAN	RURAL
40400001	FIBER-MODIFIED ASPHALT CRACK SEALING	FOOT	56541	7016	49525
40400020	BUMP REMOVAL	EACH	74	6	68
40400120	MICRO-SURFACING, SINGLE PASS, MIXTURE C	SQ YD	160674	20190	140484
40600290	BITUMINOUS MATERIALS (TACK COAT)	POUND	36158	4547	31611
40600400	MIXTURE FOR CRACKS, JOINTS, AND FLANGEWAYS	TON	6	4	2
67100100	MOBILIZATION	L SUM	1	0.5	0.5
70100460	TRAFFIC CONTROL AND PROTECTION, STANDARD 701306	L SUM	1	0.5	0.5
70102620	TRAFFIC CONTROL AND PROTECTION, STANDARD 701501	L SUM	1	1	
70300100	SHORT TERM PAVEMENT MARKING	FOOT	11198	1422	9776
70300150	SHORT TERM PAVEMENT MARKING REMOVAL	SQ FT	3733	474	3259
* 78001110	PAINT PAVEMENT MARKING - LINE 4"	FOOT	250337	40432	209905
* 78001130	PAINT PAVEMENT MARKING - LINE 6"	FOOT	27240	2760	24480
* 78100100	RAISED REFLECTIVE PAVEMENT MARKER	EACH	694	86	608
78300200	RAISED REFLECTIVE PAVEMENT MARKER REMOVAL	EACH	694	86	608

* SPECIALTY ITEMS

MODEL: Default
FILE: \\nas01c.pva\illinois\B&E\BIDD\NTEC\Illinois\pva\PI\DOT\Documents\DOT_Offices\Director_3\Projects\0366653\CADD\BIDD\0366653-RT-500.dgn

USER NAME = jeanj	DESIGNED -	REVISED -
	DRAWN -	REVISED -
PLOT SCALE = 100.0000' / in.	CHECKED -	REVISED -
PLOT DATE = 12/4/2018	DATE -	REVISED -

**STATE OF ILLINOIS
DEPARTMENT OF TRANSPORTATION**

SUMMARY OF QUANTITIES

SCALE: SHEET 1 OF 2 SHEETS STA. TO STA.

F.A.P. RTE.	SECTION	COUNTY	TOTAL SHEETS	SHEET NO.
681	(113,114)I	LIVINGSTON	12	3
			CONTRACT NO. 66J53	
		ILLINOIS	FED. AID PROJECT	

CODE NO.	ITEM	UNIT	TOTAL QUANTITY	CONSTRUCTION CODE	
				80% FEDERAL 20% STATE ROADWAY	80% FEDERAL 20% STATE ROADWAY
				0005 URBAN	0005 RURAL
X0327980	PAVEMENT MARKING REMOVAL - WATER BLASTING	SQ FT	83995	10619	73376
Z0030850	TEMPORARY INFORMATION SIGNING	SQ FT	147	42	105

* SPECIALTY ITEMS

MODEL: Default
FILE NAME: p:\u0000\BIDD\NTEC\Illinois.gov\PI\DOT\Documents\DOT_Offices\District 3\Projects\0366653\CADD\BIDD\0366653-rh-500.dgn

USER NAME = jeanj	DESIGNED -	REVISED -
	DRAWN -	REVISED -
PLOT SCALE = 100,0000 ' / in.	CHECKED -	REVISED -
PLOT DATE = 12/4/2018	DATE -	REVISED -

**STATE OF ILLINOIS
DEPARTMENT OF TRANSPORTATION**

SUMMARY OF QUANTITIES

SCALE: SHEET 2 OF 2 SHEETS STA. TO STA.

F.A.P. RTE.	SECTION	COUNTY	TOTAL SHEETS	SHEET NO.
681	(113,114)I	LIVINGSTON	12	4
CONTRACT NO. 66J53				
ILLINOIS FED. AID PROJECT				

PAVEMENT MARKING									
STA. TO STA.	LENGTH FOOT	SHORT TERM PAVT MARK (2 APP)	PAINT PAVT MARK (2 APPS)			SHRT TERM PAVT MARK REM SQ FT	PAVT MARK REM SQ FT		
			4 INCH		6 INCH				
			WHITE FOOT	YELLOW FOOT	YELLOW FOOT				
URBAN									
	15+85 TO 24+20	835	168	3340	420	56	105		
SN 053-0190	24+20 TO 25+63	143	30	572	80	10			
	25+63 TO 47+89	2226	446	8904	1120	149	3248		
	47+89 TO 54+05	616	124	2464	1232	41	1107		
	54+05 TO 57+99	394	80	1576	1576	27	788		
SN 053-0070	57+99 TO 59+31	132		528	528	60			
	59+31 TO 62+75.82	345	70	1379	1379	23	690		
STA. EQ	62+75.82 (BK) = 64+91.04 (AH)								
	64+91.04 TO 72+35	744	150	2976	1488	50	1335		
	72+35 TO 73+00	65	14	260	40	5	97		
	73+00 TO 79+45	645	130	2580	1290	43	1160		
	79+45 TO 89+89.97	1045	210	4180	4180	70	2090		
STA. EQ	89+89.97 (BK) = 92+45.38 (AH)								
URBAN SUBTOTALS		7,190	1,422	28,759	11,673	474	10,619		
RURAL									
	92+45.38 TO 99+52	707	142	2826	1413	47	1268		
	99+52 TO 123+79	2,427	486	9708	1220	162	3541		
	123+79 TO 130+89	710	142	2840	1420	47	1273		
	130+89 TO 132+57	168	34	672	100	11	249		
	132+57 TO 139+49	692	140	2768	1384	47	1243		
	139+49 TO 141+48	199	40	796	796	13	398		
	141+48 TO 146+52	504	102	2016	1008	34	905		
	146+52 TO 150+06	354	72	1416	180	24	517		
	150+06 TO 157+43	737	148	2948	1474	49	1323		
	157+43 TO 403+46	24,603	4,922	98412	12320	1641	35884		
	403+46 TO 410+93	747	150	2988	1494	50	1340		
	410+93 TO 413+13	220	44	880	120	15	323		
	413+13 TO 420+63	750	150	3000	1500	50	1345		
	420+63 TO 435+86	1,523	306	6092	780	102	2226		
SN 053-0075	435+86 TO 437+65	179	36	716	100	12			
	437+65 TO 505+12	6,747	1,350	26988	3380	450	9841		
	505+12 TO 512+44	732	148	2928	1464	49	1315		
	512+44 TO 514+82	238	48	952	120	16	347		
	514+82 TO 522+17	735	148	2940	1470	49	1320		
	522+17 TO 574+15	5,198	1,040	20792	2600	347	7581		
	574+15 TO 580+49	634	128	2536	1268	43	1137		
RURAL SUBTOTALS		48,804	9,776	195,214	14,691	3,259	73,376		
GRAND TOTALS		55,993	11,198	250,338	27,240	3,733	83,995		

MODEL: Default
 FILE: \\nas0101\B&E\BID\NTEC\Illinois\gov\PI\DOT\Documents\DOT_Offices\DI\erict_3\projects\0366\53\CADD\B&E\0366\53-rh-sc-rev.dgn

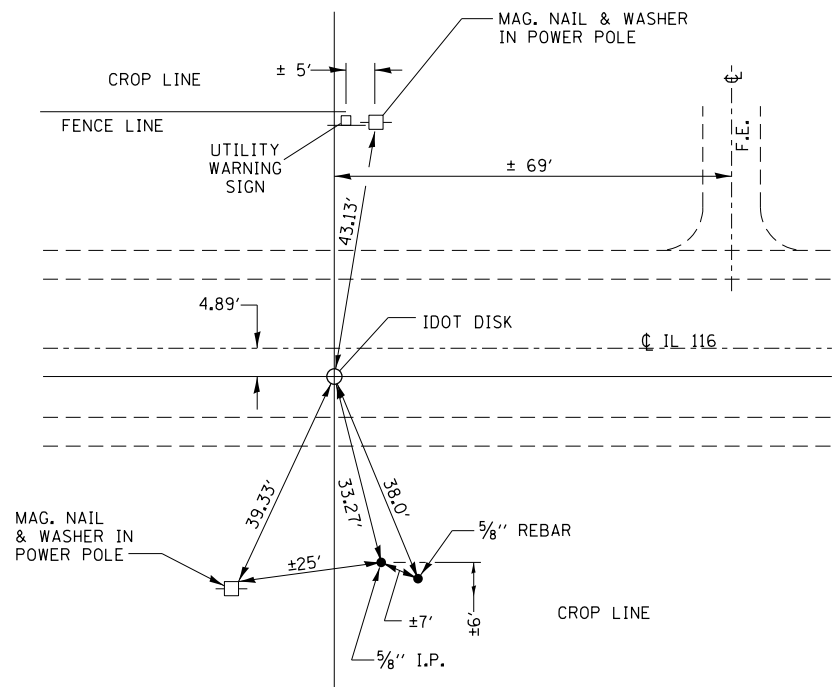
USER NAME = jeanj	DESIGNED -	REVISED -
	DRAWN -	REVISED -
PLOT SCALE = 100,0000' / in.	CHECKED -	REVISED -
PLOT DATE = 12/4/2018	DATE -	REVISED -

**STATE OF ILLINOIS
DEPARTMENT OF TRANSPORTATION**

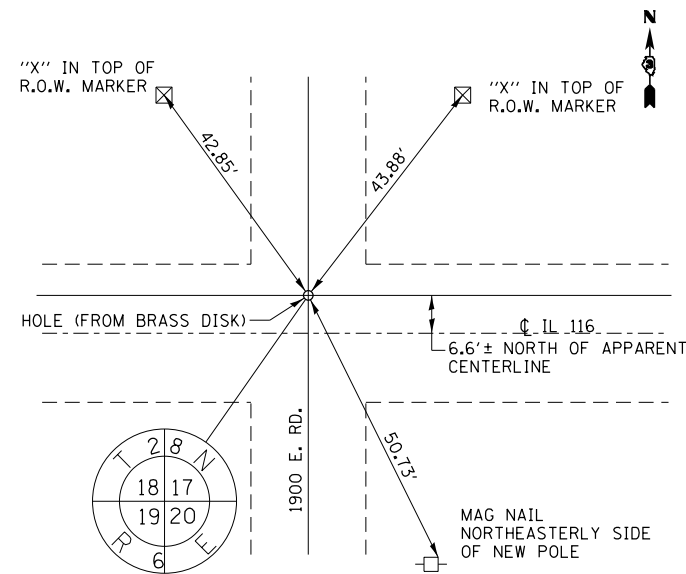
SCHEDULES

SCALE: SHEET 2 OF 2 SHEETS STA. TO STA.

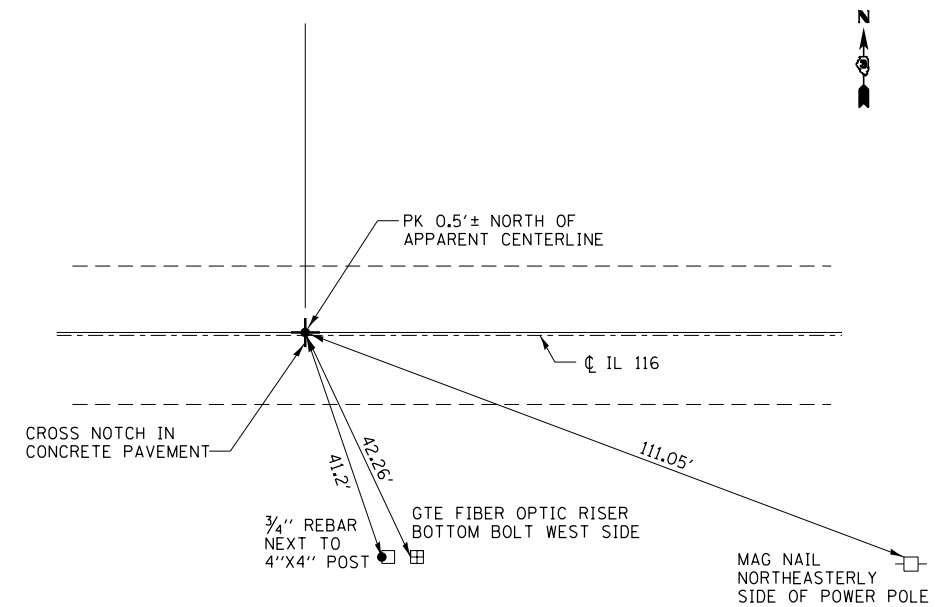
F.A.P. RTE.	SECTION	COUNTY	TOTAL SHEETS	SHEET NO.
681	(113,114)I	LIVINGSTON	12	7
			CONTRACT NO. 66J53	
		ILLINOIS	FED. AID PROJECT	



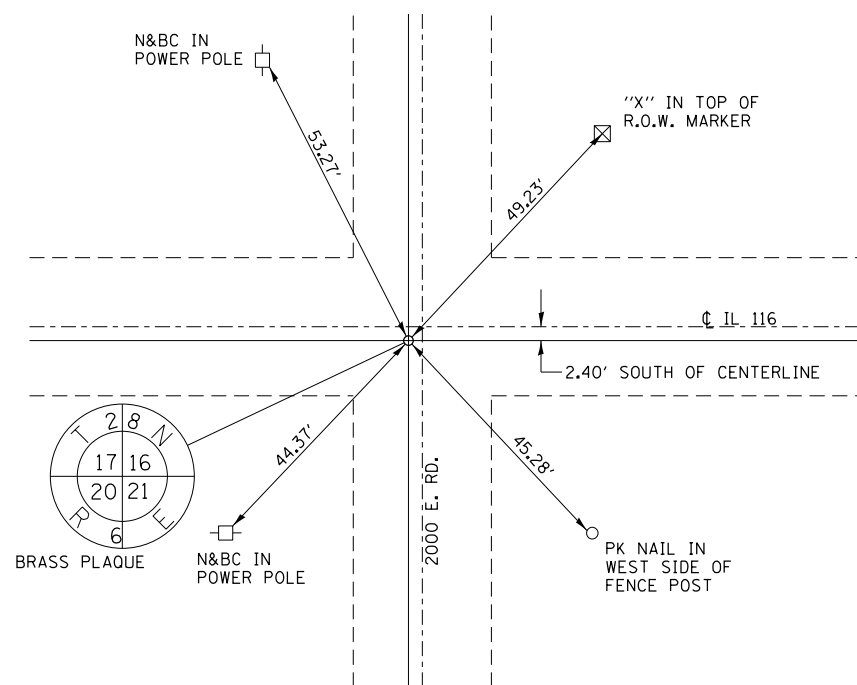
EAST QUARTER CORNER
SECTION 23 T28N R5E



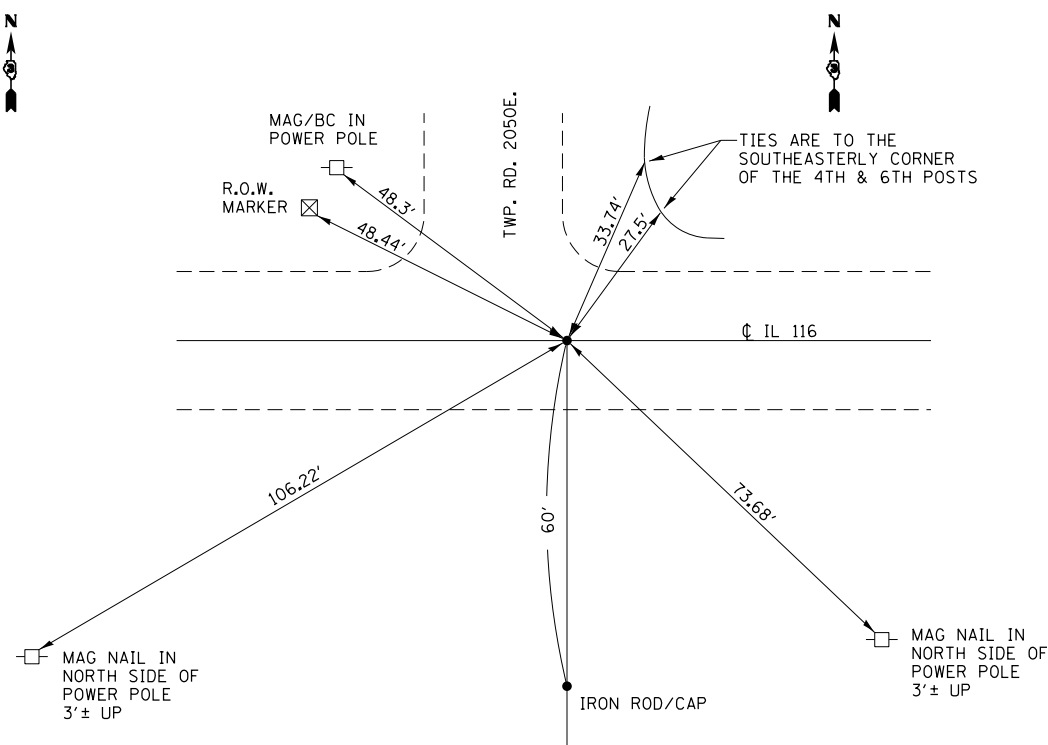
SOUTHEAST CORNER
SECTION 18 T28N R6E



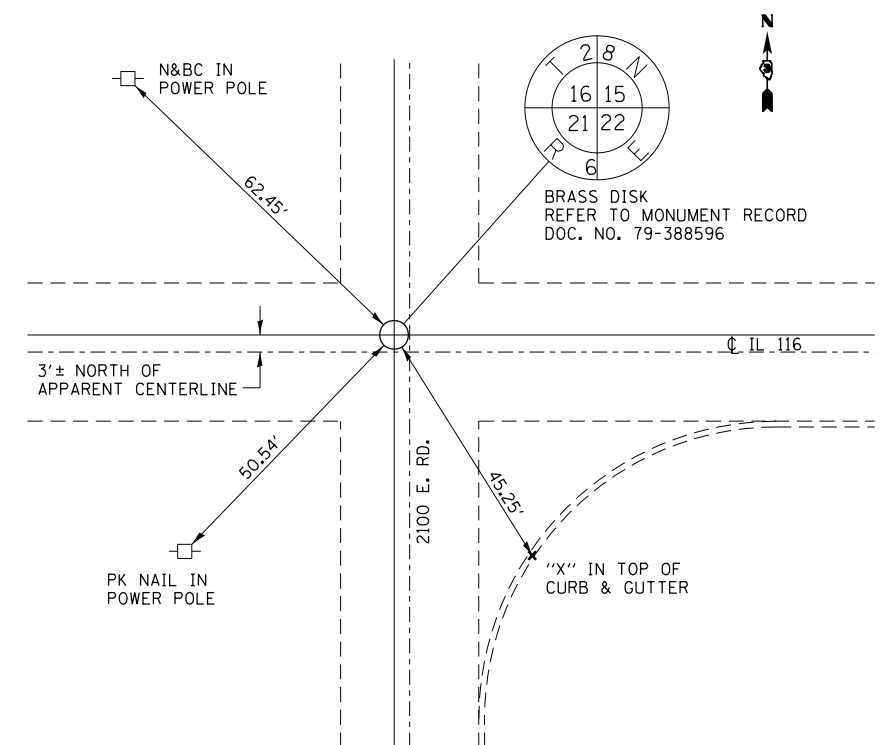
SOUTH QUARTER CORNER
SECTION 17 T28N R6E



SOUTHWEST CORNER
SECTION 16 T28N R6E

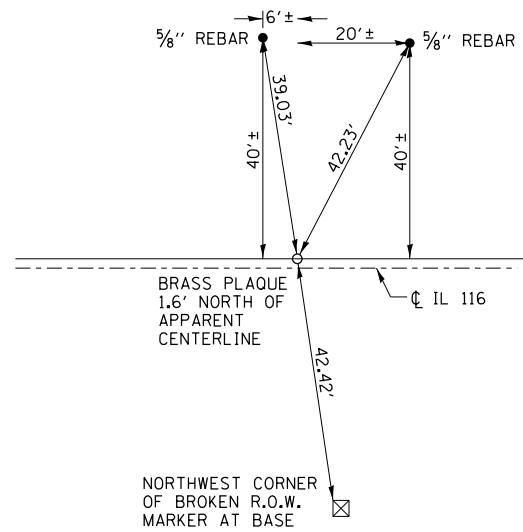


NORTH QUARTER CORNER
SECTION 21 T28N R6E

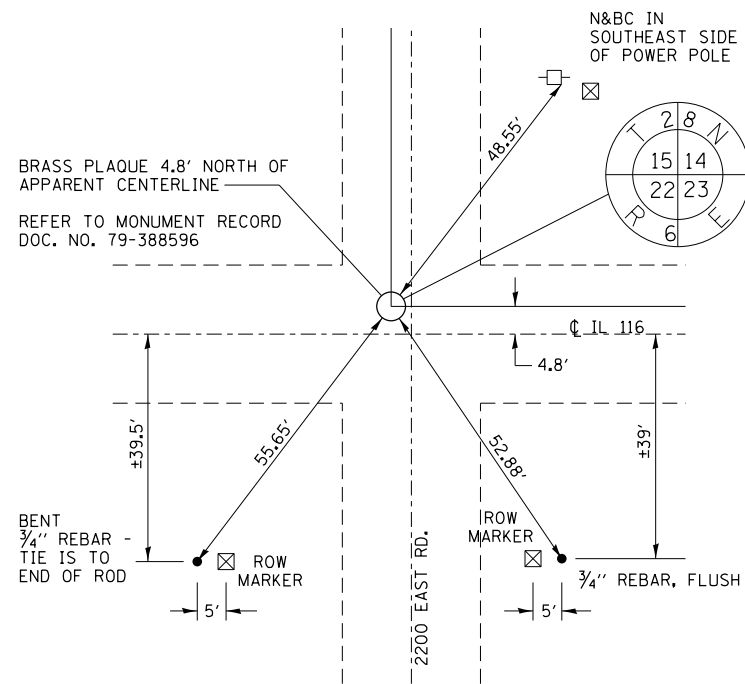


SOUTHEAST CORNER
SECTION 16 T28N R6E

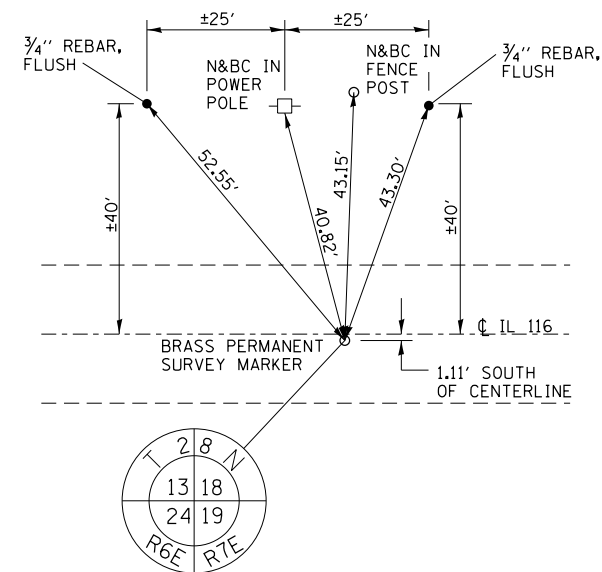
FILE NAME =	USER NAME = [jean]	DESIGNED -	REVISED -	STATE OF ILLINOIS DEPARTMENT OF TRANSPORTATION	PERMANENT SURVEY MARKERS TIE POINTS			F.A.P. RTE.	SECTION	COUNTY	TOTAL SHEETS	SHEET NO.
Default		DRAWN -	REVISED -					681	(113,114)	LIVINGSTON	12	8
		CHECKED -	REVISED -					CONTRACT NO. 66J53				
		DATE -	REVISED -					ILLINOIS FED. AID PROJECT				
	PLOT SCALE = 100,0000' / in.			SCALE:	SHEET 1	OF 3	SHEETS	STA.	TO STA.			
	PLOT DATE = 12/4/2018											



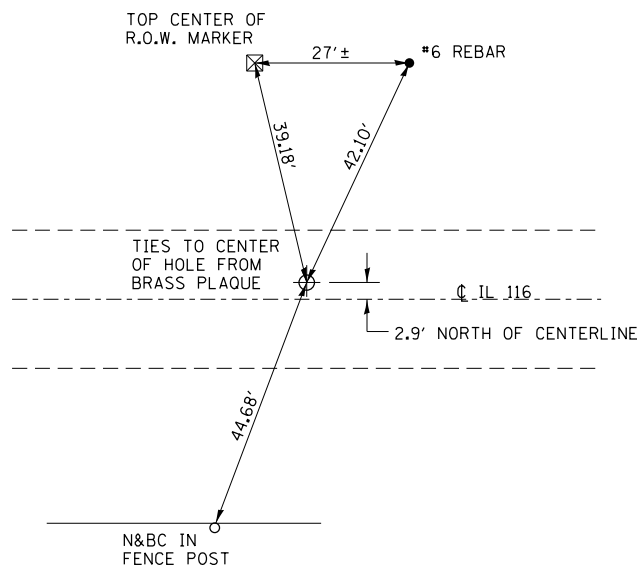
SOUTH QUARTER CORNER
SECTION 15 T28N R6E



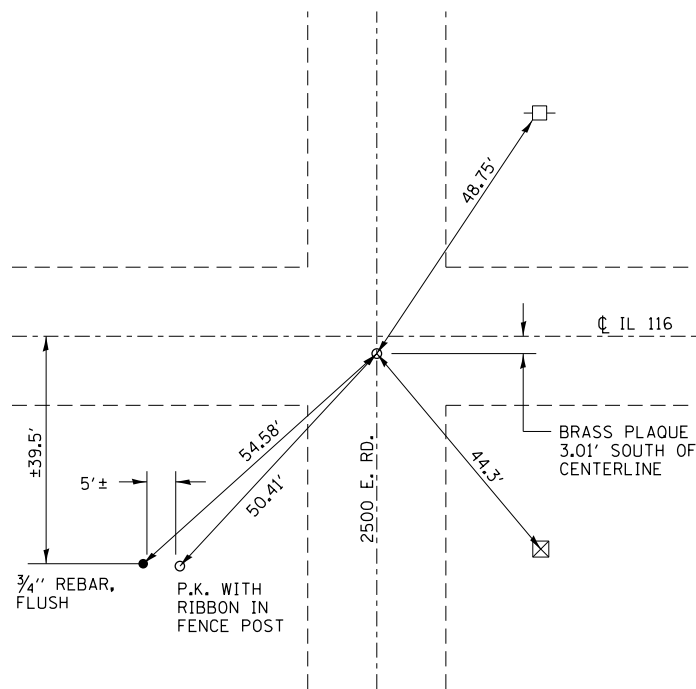
SOUTHEAST CORNER
SECTION 15 T28N R6E



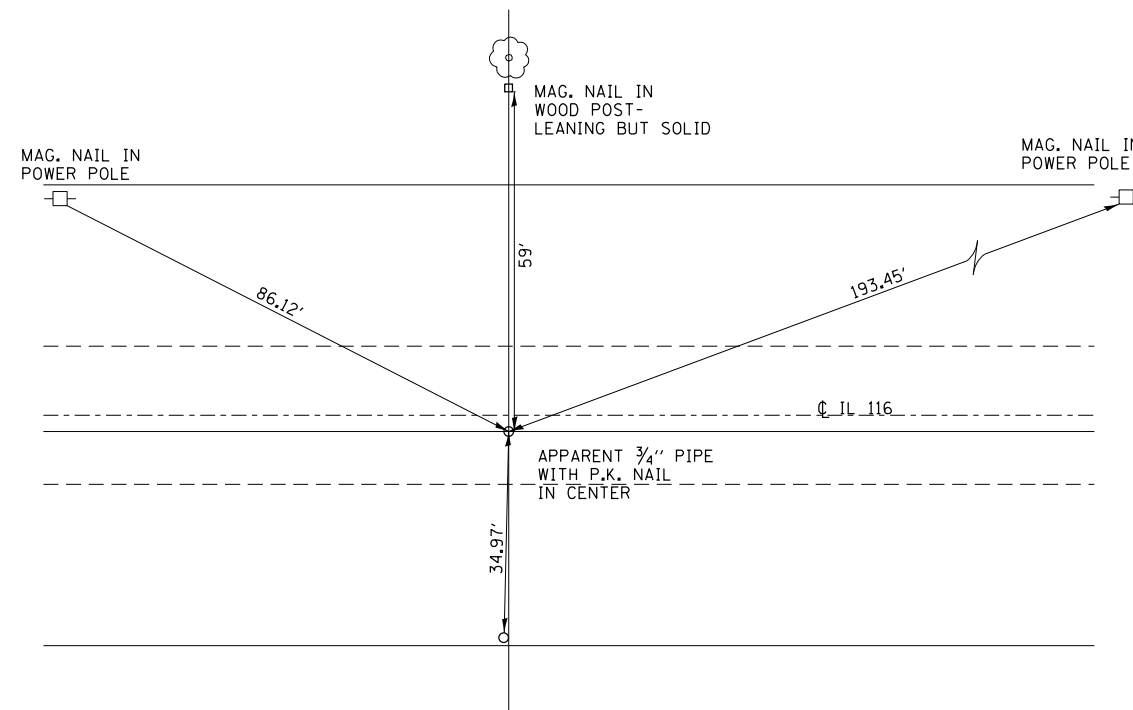
SOUTHWEST CORNER
SECTION 18 T28N R7E



SOUTH QUARTER CORNER
SECTION 18 T28N R7E



SOUTHWEST QUARTER CORNER
SECTION 17 T28N R7E



SOUTH QUARTER CORNER
SECTION 17 T28N R7E

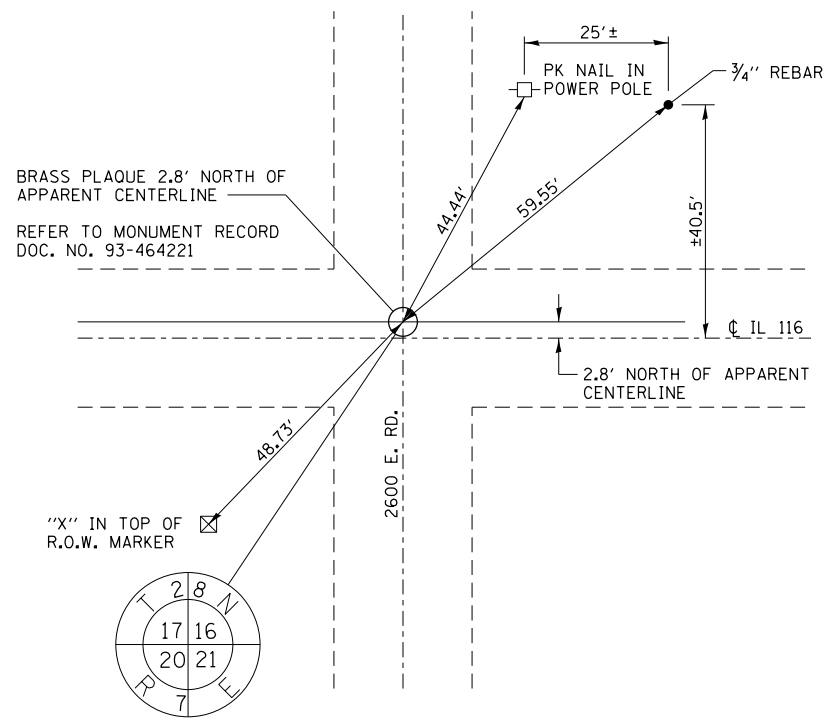
FILE NAME =	USER NAME = [jean]	DESIGNED -	REVISED -
pw:\IL084EB\INTEG\Illinois.gov\PWIDOT\Documents\DOT Offices\District 3\Projects\1366\53\CADData\1366_53-shts\sm		DRAWN -	REVISED -
Default	PLOT SCALE = 100.0000' / in.	CHECKED -	REVISED -
	PLOT DATE = 12/4/2018	DATE -	REVISED -

STATE OF ILLINOIS
DEPARTMENT OF TRANSPORTATION

PERMANENT SURVEY MARKERS
TIE POINTS

SCALE: SHEET 2 OF 3 SHEETS STA. TO STA.

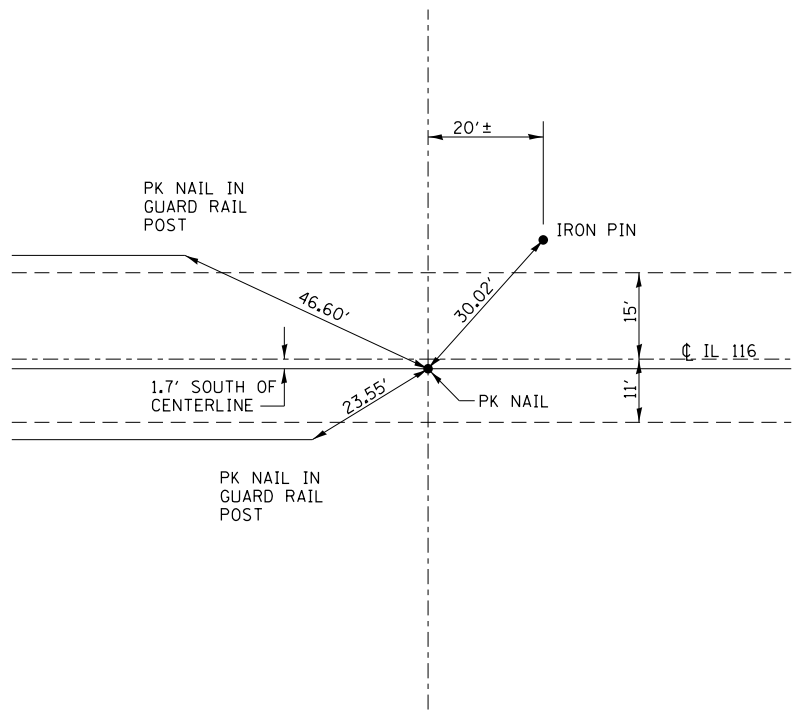
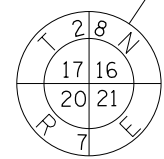
F.A.P. RTE.	SECTION	COUNTY	TOTAL SHEETS	SHEET NO.
681	(113,114)	LIVINGSTON	12	9
CONTRACT NO. 66J53				
ILLINOIS FED. AID PROJECT				



SOUTHWEST CORNER
SECTION 16 T28N R7E

BRASS PLAQUE 2.8' NORTH OF
APPARENT CENTERLINE
REFER TO MONUMENT RECORD
DOC. NO. 93-464221

"X" IN TOP OF
R.O.W. MARKER



NORTH QUARTER CORNER
SECTION 21 T28N R7E

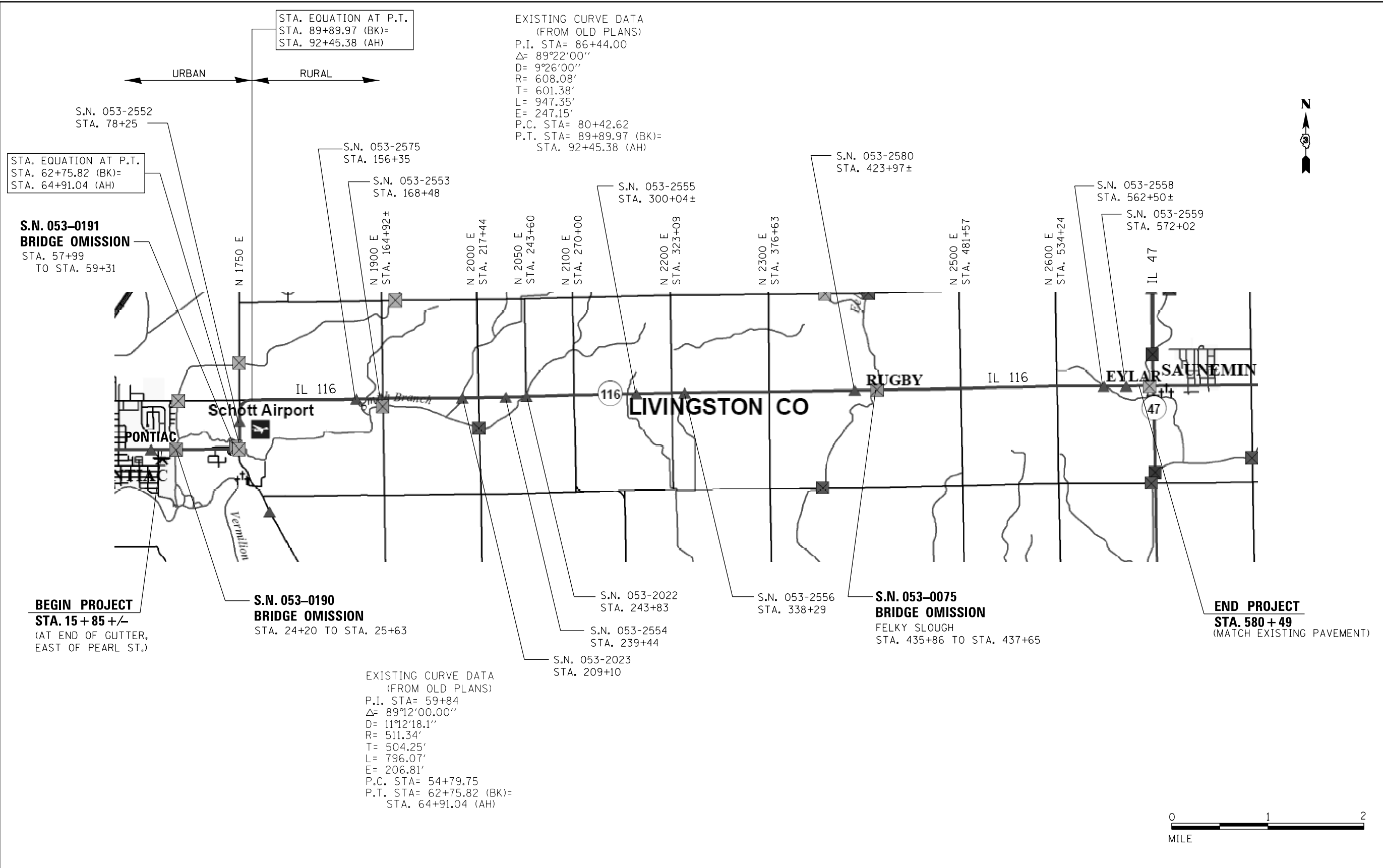
FILE NAME =	USER NAME = [jean]	DESIGNED -	REVISED -
p:\04\EBID\INTEG\Illinois.gov\PWIDOT\Documents\DOT Offices\District 3\Projects\0366\53\CADDData\0366\53-ehp\sm		DRAWN -	REVISED -
Default	PLOT SCALE = 100.0000' / in.	CHECKED -	REVISED -
	PLOT DATE = 12/4/2018	DATE -	REVISED -

STATE OF ILLINOIS
DEPARTMENT OF TRANSPORTATION

PERMANENT SURVEY MARKERS
TIE POINTS

SCALE: SHEET 3 OF 3 SHEETS STA. TO STA.

F.A.P. RTE.	SECTION	COUNTY	TOTAL SHEETS	SHEET NO.
681	(113,114)I	LIVINGSTON	12	10
CONTRACT NO. 66J53				
ILLINOIS FED. AID PROJECT				



STA. EQUATION AT P.T.
 STA. 89+89.97 (BK)=
 STA. 92+45.38 (AH)

EXISTING CURVE DATA
 (FROM OLD PLANS)
 P.I. STA= 86+44.00
 Δ = 89°22'00"
 D= 9°26'00"
 R= 608.08'
 T= 601.38'
 L= 947.35'
 E= 247.15'
 P.C. STA= 80+42.62
 P.T. STA= 89+89.97 (BK)=
 STA. 92+45.38 (AH)

STA. EQUATION AT P.T.
 STA. 62+75.82 (BK)=
 STA. 64+91.04 (AH)

**S.N. 053-0191
 BRIDGE OMISSION**
 STA. 57+99
 TO STA. 59+31

BEGIN PROJECT
STA. 15 + 85 +/-
 (AT END OF GUTTER,
 EAST OF PEARL ST.)

**S.N. 053-0190
 BRIDGE OMISSION**
 STA. 24+20 TO STA. 25+63

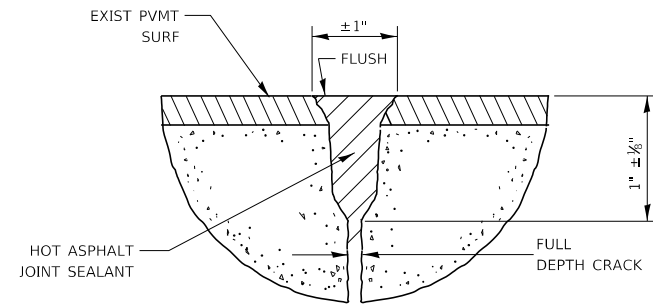
EXISTING CURVE DATA
 (FROM OLD PLANS)
 P.I. STA= 59+84
 Δ = 89°12'00.00"
 D= 11°12'18.1"
 R= 511.34'
 T= 504.25'
 L= 796.07'
 E= 206.81'
 P.C. STA= 54+79.75
 P.T. STA= 62+75.82 (BK)=
 STA. 64+91.04 (AH)

**S.N. 053-0075
 BRIDGE OMISSION**
 FELKY SLOUGH
 STA. 435+86 TO STA. 437+65

END PROJECT
STA. 580 + 49
 (MATCH EXISTING PAVEMENT)

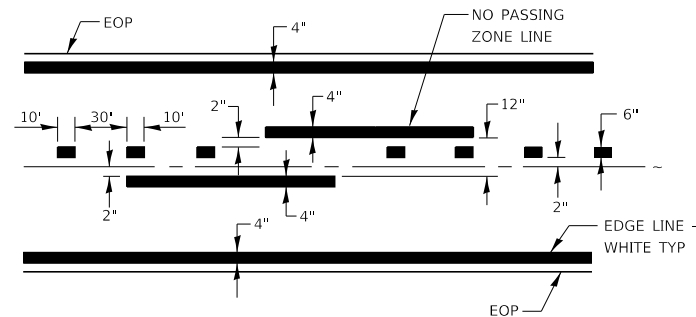


FILE NAME =	USER NAME = jeanj	DESIGNED -	REVISED -	STATE OF ILLINOIS DEPARTMENT OF TRANSPORTATION	SCHEMATIC	F.A.P. RTE.	SECTION	COUNTY	TOTAL SHEETS	SHEET NO.
pw\1\084EBID\INTEG\Illinois.gov\PWIDOT\Documents\DOT Offices\District 3\Projects\0366\53\CADData\0366\53-ah-drawn	DRAWN -	REVISED -	681			(113,114)J	LIVINGSTON	12	11	
PLOT SCALE = 110.0792' / in.	CHECKED -	REVISED -	CONTRACT NO. 66J53							
Default	PLOT DATE = 12/1/2018	DATE -	REVISED -	SCALE:	SHEET 1 OF 1 SHEETS	STA.	TO STA.	ILLINOIS FED. AID PROJECT		



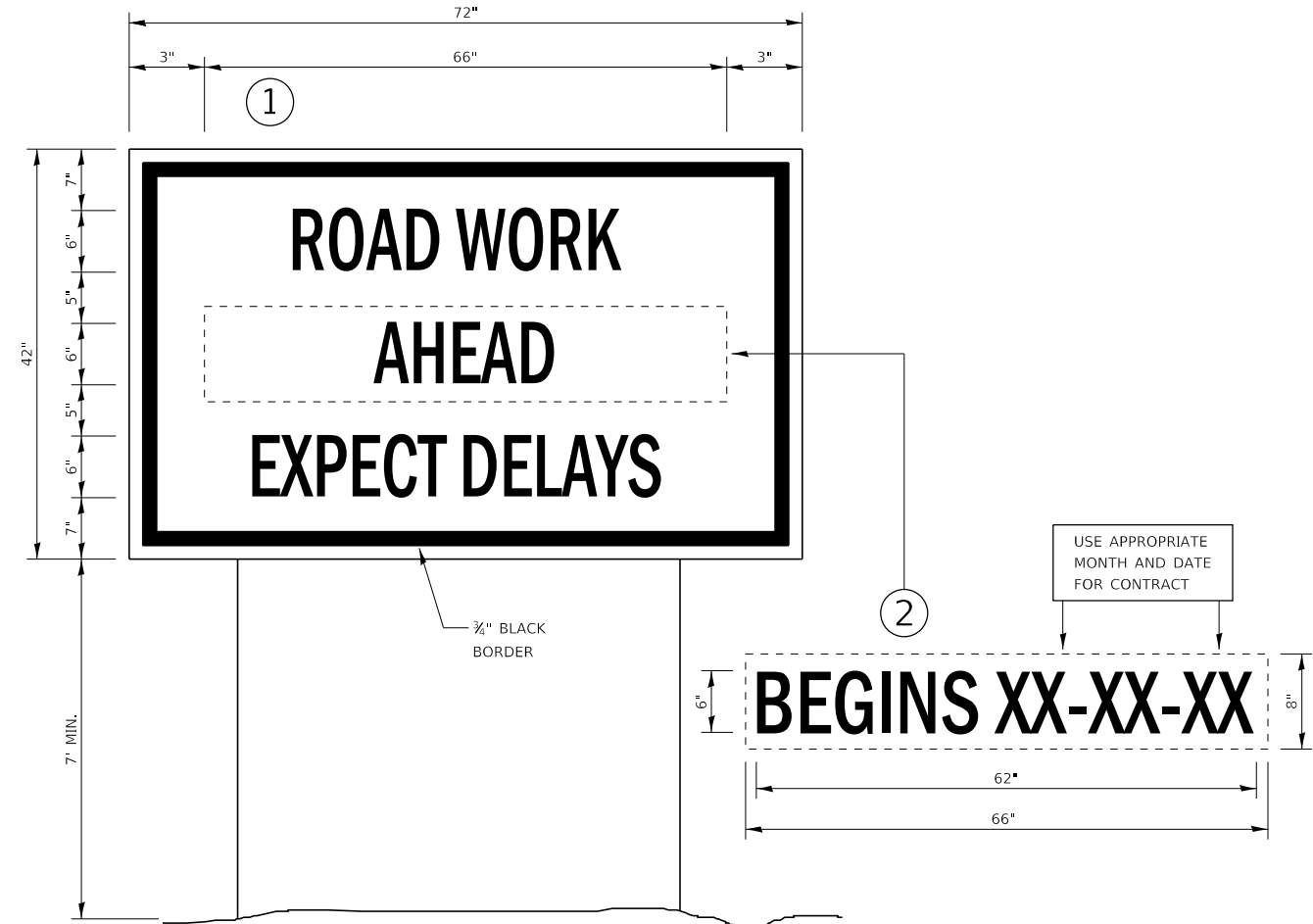
SEALING CRACKS (PAVEMENT) DETAIL

NOTE: ALL CRACKS LESS THAN 3/8" WIDTH REQUIRE ROUTING



CENTERLINE & NO PASSING ZONE LINES - YELLOW

PAVEMENT MARKING



TEMPORARY INFORMATION SIGNING

NOTES:

- USE 6" D BLACK LETTERING ON FLUORESCENT ORANGE BACKGROUND.
- ERECT SIGNS AT LOCATIONS IN ADVANCE OF THE "ROAD CONSTRUCTION AHEAD" SIGNS AS DIRECTED BY THE ENGINEER.
- ERECT SIGN ① WITH INSTALLED PANEL ② A MINIMUM OF ONE WEEK PRIOR TO THE START OF THE LANE CLOSURE.
- REMOVE PANEL ② ON THAT DATE.
- SEE SPECIAL PROVISION "TEMPORARY INFORMATION SIGNING" FOR ADDITIONAL INFORMATION.
- WILL BE PAID FOR PER SQ FT AS "TEMPORARY INFORMATION SIGNING". EACH SIGN = 21 SQ FT AND THE DATE PANEL ② WILL NOT BE MEASURED SEPARATELY FOR PAYMENT.

FILE NAME =	USER NAME = jearj	DESIGNED -	REVISED -	STATE OF ILLINOIS DEPARTMENT OF TRANSPORTATION	DETAILS	F.A.P. RTE.	SECTION	COUNTY	TOTAL SHEETS	SHEET NO.
pw\11084EBID\INTEG\Illinois.gov\PWIDOT\Documents\DOT Offices\District 3\Projects\I366\53\CADData\I366\53-shh-drawn	DOT Office\District 3\Projects\I366\53\CADData\I366\53-shh-drawn	DRAWN -	REVISED -			681	(113,114)J	LIVINGSTON	12	12
PLOT SCALE = 110.0792 1/In.		CHECKED -	REVISED -			CONTRACT NO. 66J53				
PLOT DATE = 12/4/2018		DATE -	REVISED -			ILLINOIS FED. AID PROJECT				
Default				SCALE:	SHEET 1 OF 1 SHEETS	STA.	TO STA.			