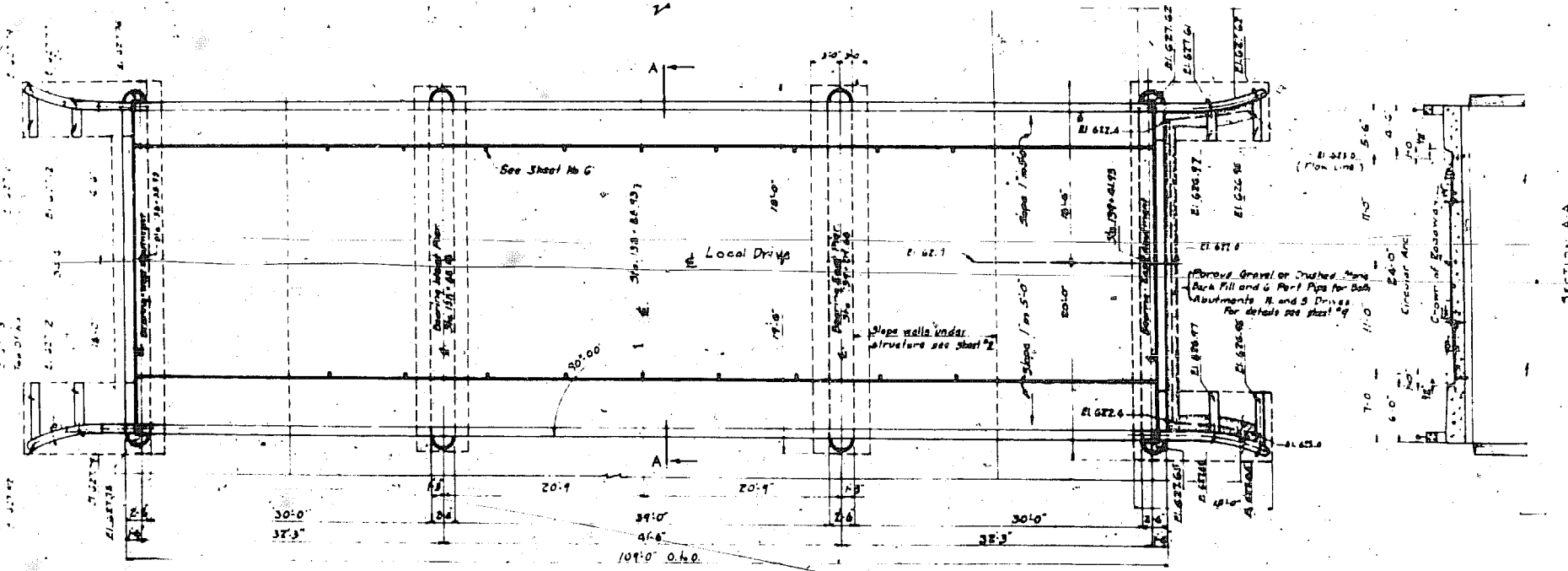
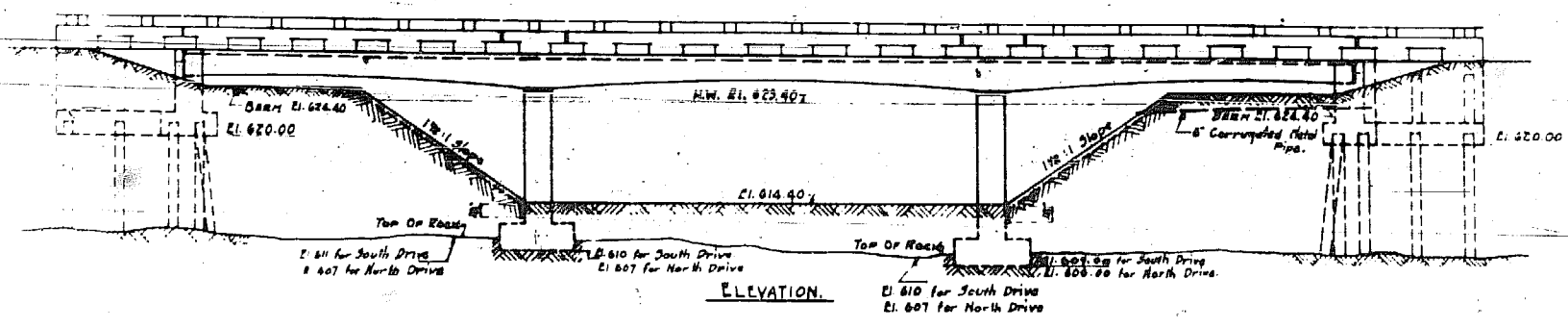


PLAN FOR NORTH DRIVE



PLAN FOR SOUTH DRIVE

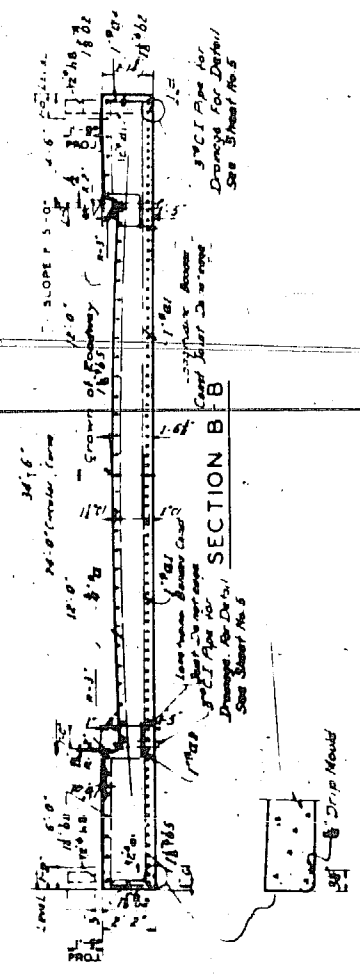
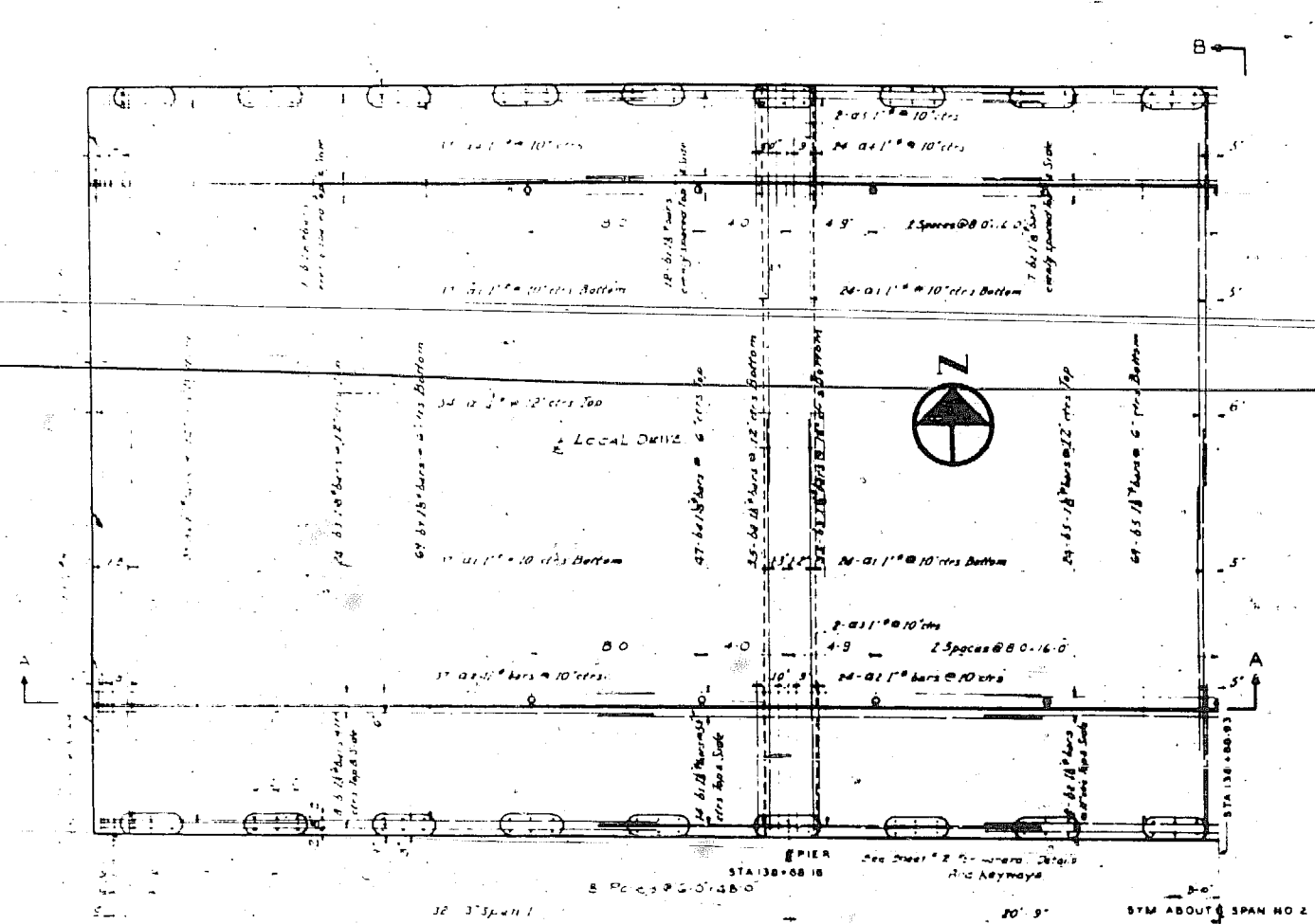


REVISIONS

DEPARTMENT OF HIGHWAYS	
GENERAL PLAN FOR LOCAL DRIVES CONGRESS ST EXPRESSWAY BRIDGES OVER ADDISON CREEK	
DATE	UI 26(17)
PROJECT NO.	131
STATE HIGHWAY NO.	062-3636 2
NO.	4
DATE	21 CP 558

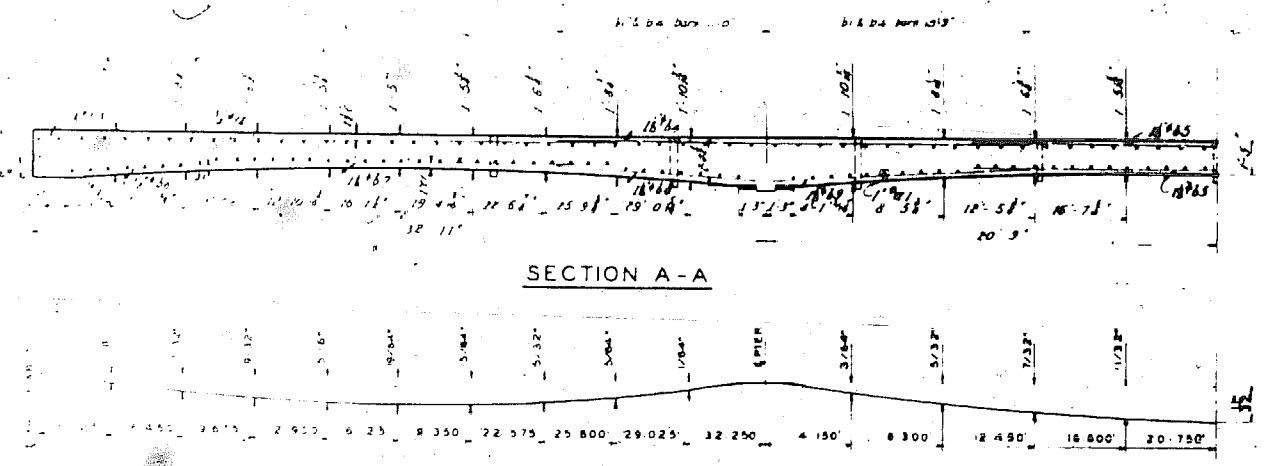
BILL OF MATERIAL											
		C OUTSIDE		A		B OUTSIDE		A		C	
		TYPE 1		TYPE 5		TYPE 6		A		TYPE 2	
MARK	NO	SIZE	LENGTH	TYPE	SKETCH	A	B	C	D	E	F
Q	218	3/4"	28.3	STR							
Q1	498	1/2"	9.9	2							
Q2	244	1/2"	9.9	2							
Q3	18	1/2"	4.5	2							
Q4	244	1/2"	8.3	2							
Q5	19	1/2"	2.2	2							
b	80	1/2"	25.0	STR							
b1	104	1/2"	21.3	STR							
b2	39	1/2"	27.3	STR							
b3	98	1/2"	25.0	STR							
b4	188	1/2"	27.3	STR							
b5	188	1/2"	27.3	STR							
b6	140	1/2"	10.3	STR							
b7	278	1/2"	25.0	STR							
b8	140	1/2"	11.0	STR							
b9	140	1/2"	0.3	STR							
b0	144	1/2"	4.8	1							
d	218	1/2"	6.6	8							

REINFORCEMENT BARS 3880 LBS  
 CLASS "X" CONCRETE 5.91 C.Y.S  
 OIL SOLVENT MIXTURE 50 GAL



PLAN FOR SOUTH DRIVE  
NORTH DRIVE OPP HAND

SECTION A-A



D L DEFLECTION DIAGRAM

Slab shall be cambered for dead load deflection by adding deflection ordinates to the elevations shown for the top of slab

STATION	ELEVATION	STATION	ELEVATION	STATION	ELEVATION	STATION	ELEVATION	STATION	ELEVATION	STATION	ELEVATION	STATION	ELEVATION	STATION	ELEVATION	STATION	ELEVATION	STATION	ELEVATION	STATION	ELEVATION																				
138+00	10.11	138+10	10.12	138+20	10.13	138+30	10.14	138+40	10.15	138+50	10.16	138+60	10.17	138+70	10.18	138+80	10.19	138+90	10.20	139+00	10.21	139+10	10.22	139+20	10.23	139+30	10.24	139+40	10.25	139+50	10.26	139+60	10.27	139+70	10.28	139+80	10.29	139+90	10.30	140+00	10.31

NOTE  
 MINIMUM LAP FOR  
 3/4" BAR - 2'-0"  
 1" BAR - 2'-0"  
 1 1/2" BAR - 3'-0"  
 2" BAR - 3'-0"

DATE	BY	DESCRIPTION
1-25-52	FSP	OIL SOLVENT MIXTURE ADDED
4-28-52		Outside Drip Mould

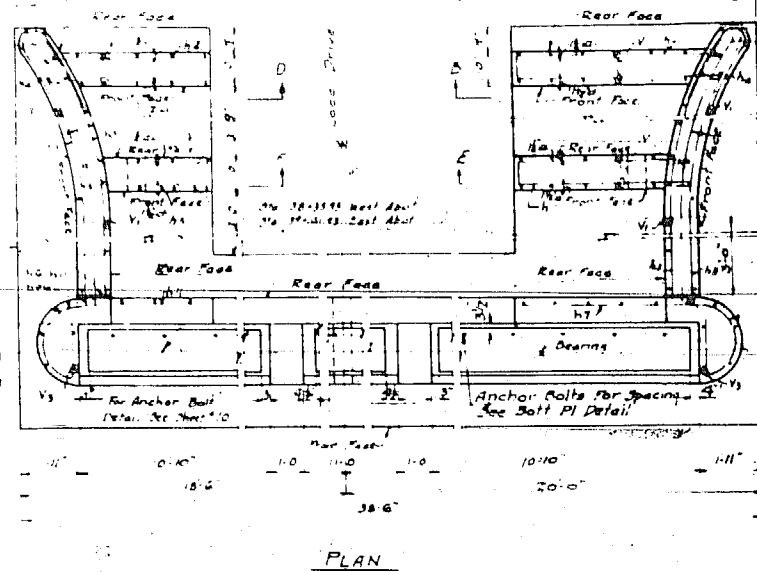
DEPARTMENT OF HIGHWAYS  
 COOK COUNTY ILLINOIS  
 WILLIAM N. ERICKSON      GEORGE A. DUNN, JR.

SUPERSTRUCTURE FOR LOCAL DRIVES  
 CONGRESS STREET EXPRESSWAY  
 BRIDGES OVER ADDISON CREEK

APPROVED: 12/30/52  
 [Signature]

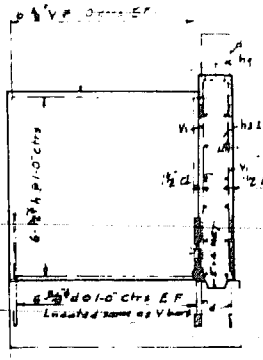
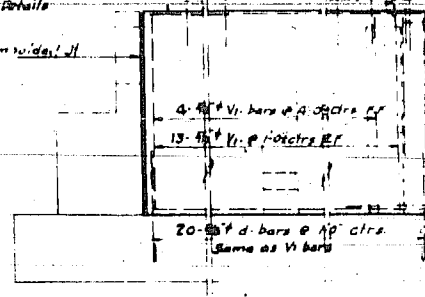
131 062-3636 2 6 21 CP564





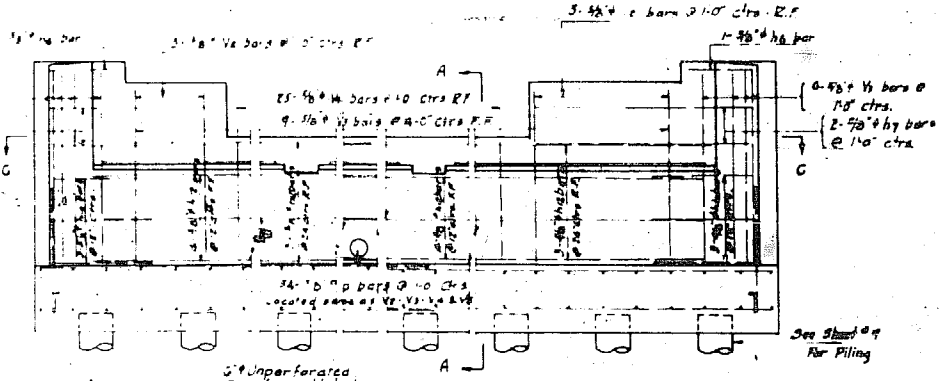
See Sheet #10 for Location of Dowels d & h bars h & h<sub>1</sub> for handrail on King Walls

See Sheet #12 for Handrail Details

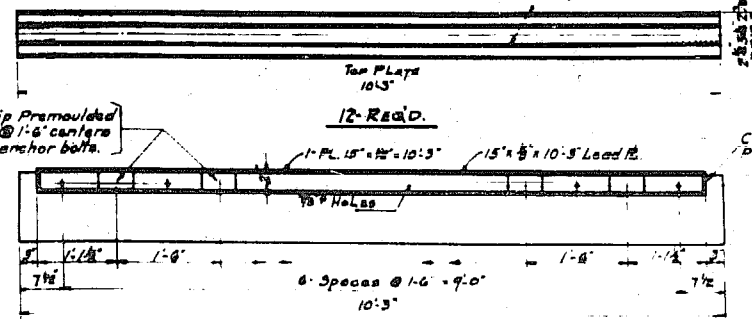
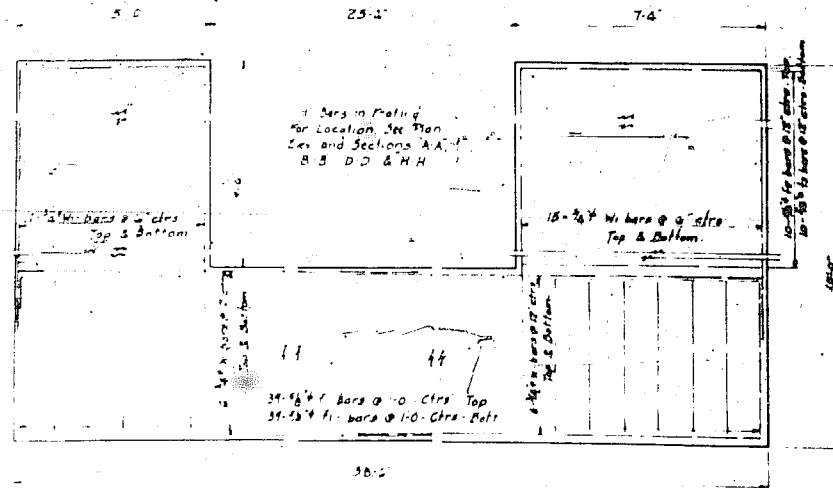
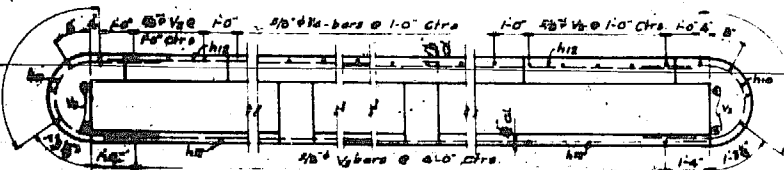
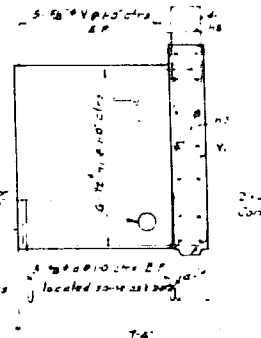
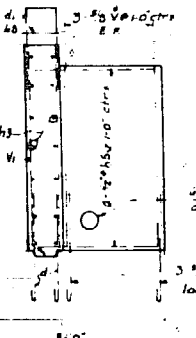
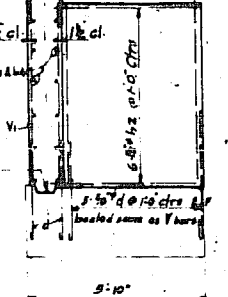
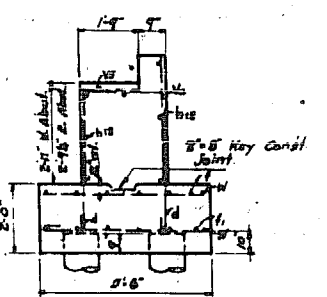


MARK	No	SIZE	LENGTH	NO. OF BARS REQUIRED				SAIT	TYPE	REMARKS
				NORTH		SOUTH				
				EAST	WEST	EAST	WEST			
h	24	1/2"	4.3	6	6					
h <sub>1</sub>	24	1/2"	1.9		6					
h <sub>2</sub>	24	1/2"	3		6					
j	12	1/2"	2	2	2	2	2		STC	
h <sub>4</sub>	56	1/2"	4.9	4	4	4	4		STC	
h <sub>5</sub>	24	1/2"	7.0	6	6	6	6		STC	
h <sub>6</sub>	8	1/2"	0.9	2	2	2	2		STC	
h <sub>7</sub>	8	1/2"	0.0	2	2				STC	
h <sub>8</sub>	16	1/2"	4.6	4	4				STC	
h <sub>9</sub>	16	1/2"	5.6	4	4				STC	
h <sub>10</sub>	24	1/2"	7.0	6	6				STC	
h <sub>11</sub>	8	1/2"	8.6	2	2	2	2		STC	
h <sub>12</sub>	56	1/2"	16.0	14	14	14	14		STC	
v	187	1/2"	4.6	38	38	38	38		STC	
v <sub>1</sub>	150	1/2"	5.3	27	27	27	27		STC	
v <sub>2</sub>	32	1/2"	4.9	8	8	8	8		STC	
v <sub>3</sub>	48	1/2"	5.3	12	12	12	12		STC	
v <sub>4</sub>	100	1/2"	3.3	25	25	25	25		STC	
v <sub>5</sub>	30	1/2"	4.3	9	9	9	9		STC	
e	186	1/2"	5.3	39	39	39	39		STC	
f	186	1/2"	6.6	39	39	39	39		STC	
f <sub>1</sub>	40	1/2"	7.0	10	10	10	10		STC	
f <sub>2</sub>	40	1/2"	8.3	10	10	10	10		STC	
f <sub>3</sub>	40	1/2"	3.3	10	10	10	10		STC	
f <sub>4</sub>	40	1/2"	6.7	10	10	10	10		STC	
w	96	1/2"	20.0	24	24	24	24		STC	
w <sub>1</sub>	208	1/2"	11.3	52	52	52	52		STC	
d	528	1/2"	4.0	132	132	132	132		STC	
d <sub>1</sub>	56	1/2"	3.6	14	14	14	14		STC	

REINFORCEMENT BARS  
CLASS 'X' CONCRETE  
TEST P.L.  
P.L. 50  
STEELING STAIN



ELEVATION OF EAST ABUTMENT FOR SOUTH LOCAL DRIVE AS NOTED  
ELEVATION OF WEST ABUTMENT FOR SOUTH LOCAL DRIVE OPP. HAND  
ELEVATION OF EAST ABUTMENT FOR NORTH LOCAL DRIVE OPP. HAND & AS NOTED



NOTE  
Minimum Gap On 1/2" Bar is 1/4"  
R.F. is Rear Face  
P.F. is Front Face

NOTE  
DIAGRAM OF LOCATION OF ELEVATIONS SHOWN ON SHEET #6

REVISIONS		
DATE	BY	DESCRIPTION
12-31-52	P.S.R.	Revised Reinforcement Plan

DEPARTMENT OF HIGHWAYS  
COOK COUNTY ILLINOIS

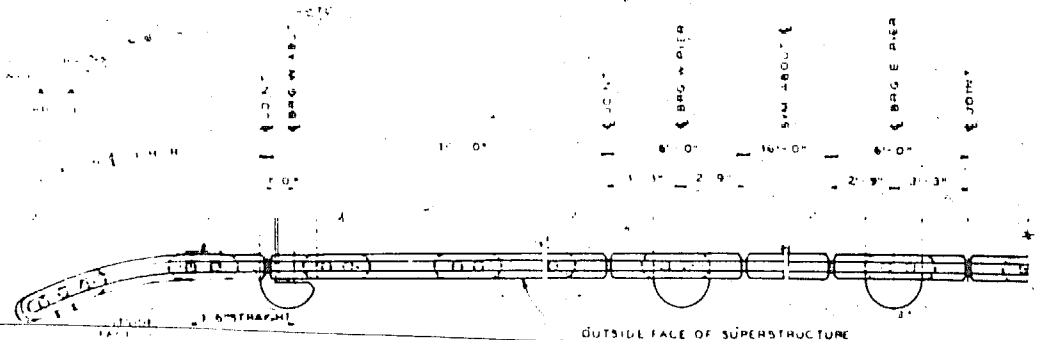
REINFORCEMENT-ABUTMENTS-LOCAL DRIVES  
CONGRESS STREET EXPRESSWAY  
BRIDGES OVER ADDISON CREEK

COMPUTED R.B.  
DRAWN W.H.T.  
CHECKED [Signature]

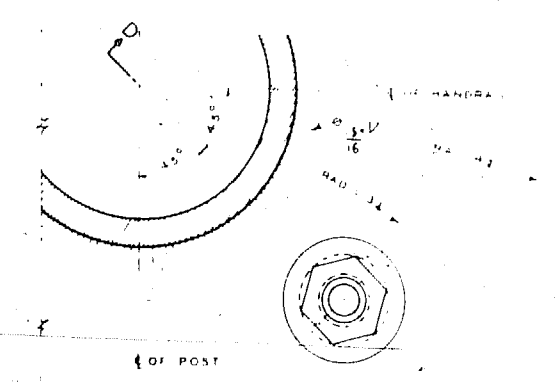
PROJECT U.I. 261(17)  
SCALE 3/8"=1'-0" EXCEPT AS NOTED  
APPROVED [Signature]

Route No.	Sheet No.	Total Sheets	Drawing No.
131	062-36362	11	21

CP 562

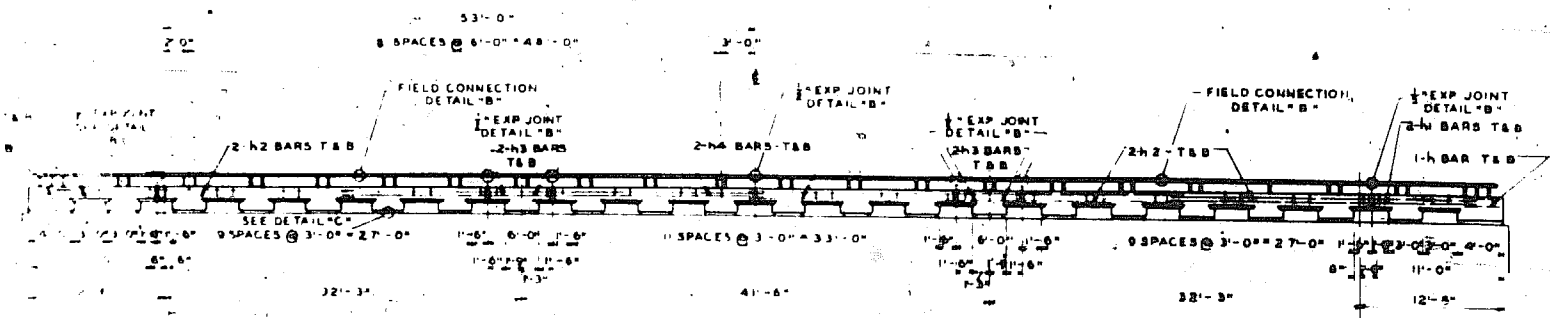


**PLAN OF HANDRAIL**  
6 SETS REQUIRED AS SHOWN  
SCALE 1/4" = 1'-0"

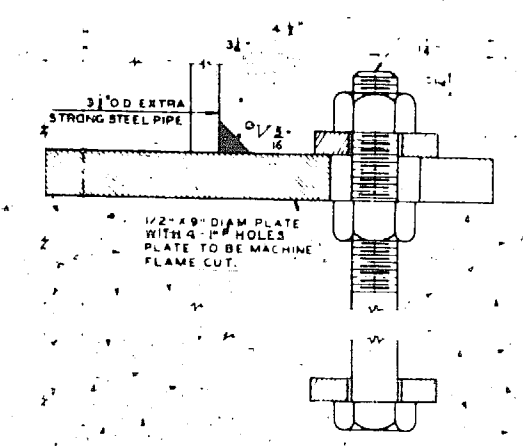


**DETAIL A**  
SCALE FULL SIZE

2 #8 BOLTS  
2 NUTS & WASHERS  
SEE SPECIAL PROVISIONS  
BOLTS TO BE PLACED  
WITHIN 1/4" OF FACE



**ELEVATION**  
SCALE 1/8" = 1'-0"



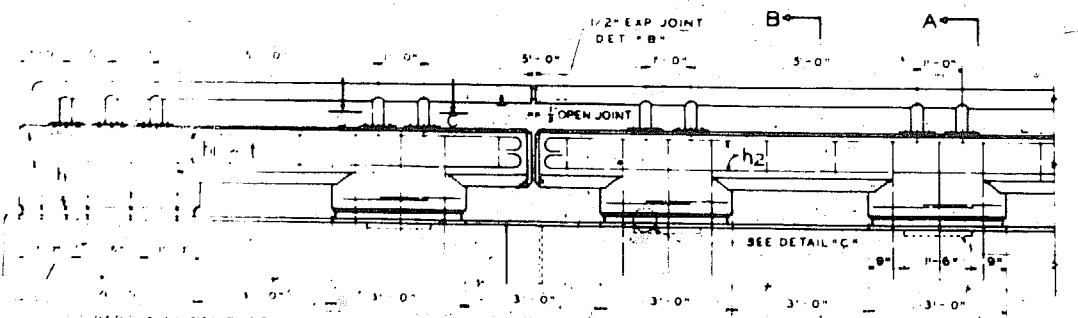
**SECTION D-D**  
SCALE FULL SIZE

**BILL OF MATERIALS**

BARS	NO.	SIZE	LENGTH	A	B
t	4	1/2"	7.6	1	1
h1	48		3.1	1	1
h2	96		1.5	1	1
h3	48		6.5	1	1
h4	48		19.3	1	1
t	6	1/2"	3.1	1	1

HANDRAIL 1/8" = 1'-0"

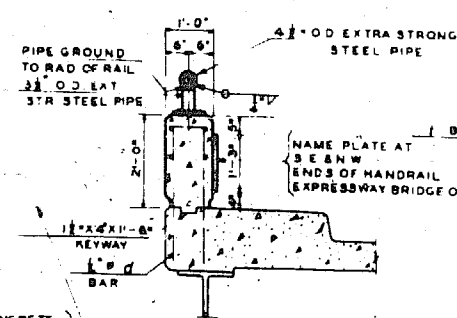
**SECTION C-C**



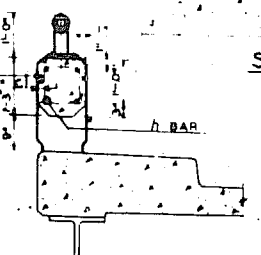
**TYPICAL END PANEL**

**TYPICAL PANEL**

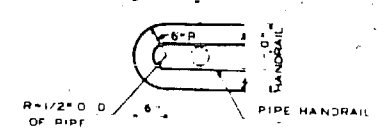
SCALE 1/2" = 1'-0"



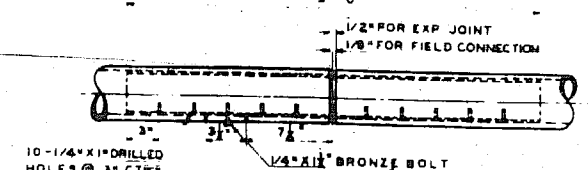
**SECTION A-A**  
SCALE 1/2" = 1'-0"



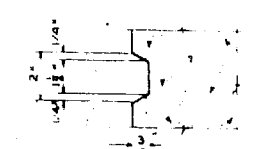
**SECTION B-B**  
SCALE 1/2" = 1'-0"



**TYPICAL DETAIL AT ENDS OF PIPE HANDRAIL**  
SCALE 3/4" = 1'-0"



**DETAIL B**  
SCALE 1/2" = 1'-0"



**DETAIL C**  
SCALE 3/4" = 1'-0"

**REVISIONS**

DATE	BY	DESCRIPTION
10-22-52	ESR	Remove Note

**DEPARTMENT OF HIGHWAYS**  
COOK COUNTY ILLINOIS

WILLIAM ERICSON  
ENGINEER

**HANDRAIL DETAILS**  
**CONGRESS STREET EXPRESSWAY**  
BRIDGES OVER ADDISON CREEK

COMPILED BY: J. I. 26 (1952)  
DRAWN BY: W. H. S. (1952)  
APPROVED BY: J. I. 26 (1952)

APPROVED: J. I. 26 (1952)  
DATE: 10-22-52  
SCALE: 1/8" = 1'-0"  
NO. OF SHEETS: 131  
PROJECT NO.: 062-3636-2  
SHEET NO.: 2  
JOB NO.: C P 565