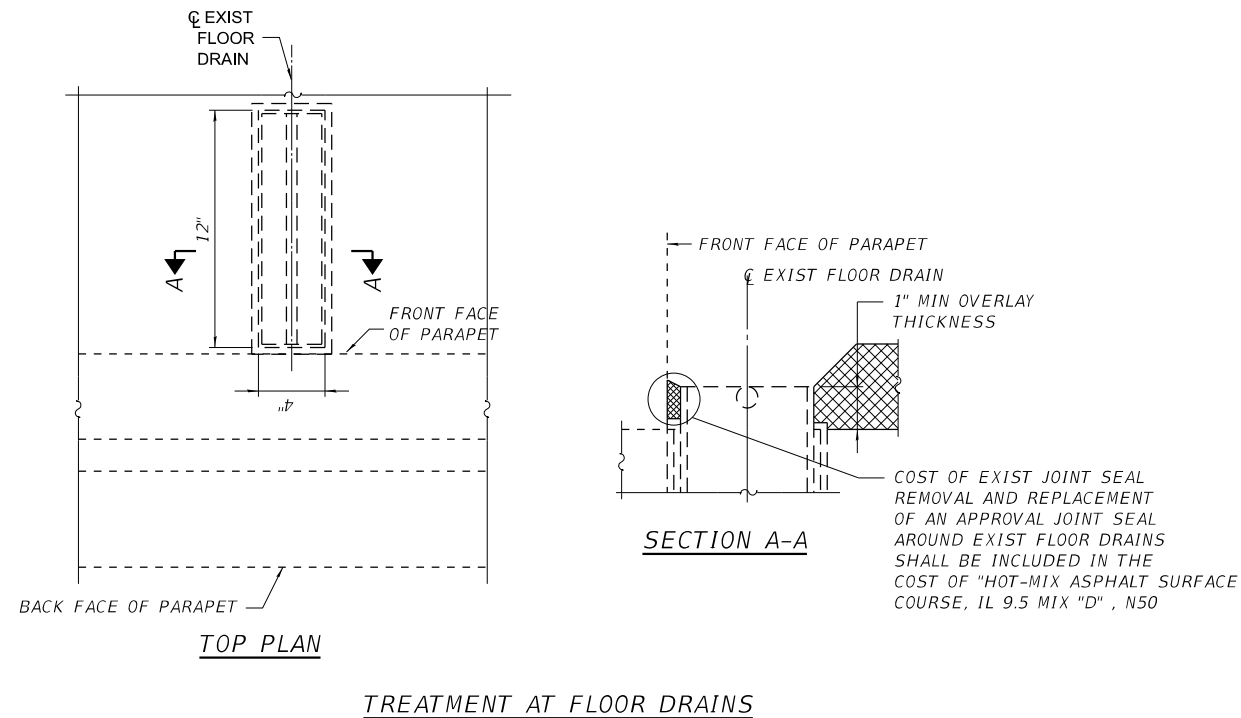


PLAN



HMA

Location(s):	Surface	
Mixture Use(s):	Surface	
Binder Grade (AC/PG):	PG 58-28	
Design Air Voids:	4.0 @ Ndes=50	
Mixture Composition:		
(Mixture Gradation):	IL 9.5	
Friction Aggregate:	Mixture "D"	
Mixture Weight:	112 Lb/SQ YD/IN	
Quality Management Program:	QC/QA	
Sublot Size:	N/A	

Location and Mixture Use(s):	Waterproof System	
	Surface	Binder
PG:	SBS PG 70-28	SBS PG 76-22
Design Air Voids	4.0 @ N50	4.0 @ N50
Mixture Composition	SMA 9.5	IL 4.75
Friction Aggregate	D	N/A
Mix Weight	112 lb/sy/in	N/A
Quality Management Program	QC/QA	QC/QA
Sublot Size	N/A	N/A
Material Transfer Device	N/A	N/A

MODEL: Default
 FILE NAME: \\kpf.com\dfs\Bf\pge\2300695 (WO 8)\02_Design (MS)\456264\S62-05 - Deck Repairs.dgn
 12/15/2023 10:39:37 AM

1500 Sherman Ave, Suite 1020
Evanston, IL 60201
847-859-7790
www.kpff.com

USER NAME =	DESIGNED -	REVISED -
PLOT SCALE =	CHECKED -	REVISED -
PLOT DATE =	DRAWN -	REVISED -
	CHECKED -	REVISED -

STATE OF ILLINOIS
DEPARTMENT OF TRANSPORTATION

SN 098-0067 YORKTOWN ROAD OVER I-88
DECK REPAIRS

F.A.I RTE.	SECTION	COUNTY	TOTAL SHEETS	SHEET NO.
88	(195-2HVBI)BR	WHITESIDE	6	5
SN 098-0067		CONTRACT NO. 64S62		
ILLINOIS FED. AID PROJECT				