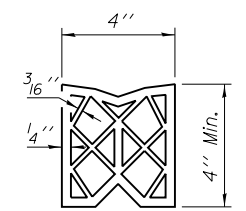


EXISTING JOINT

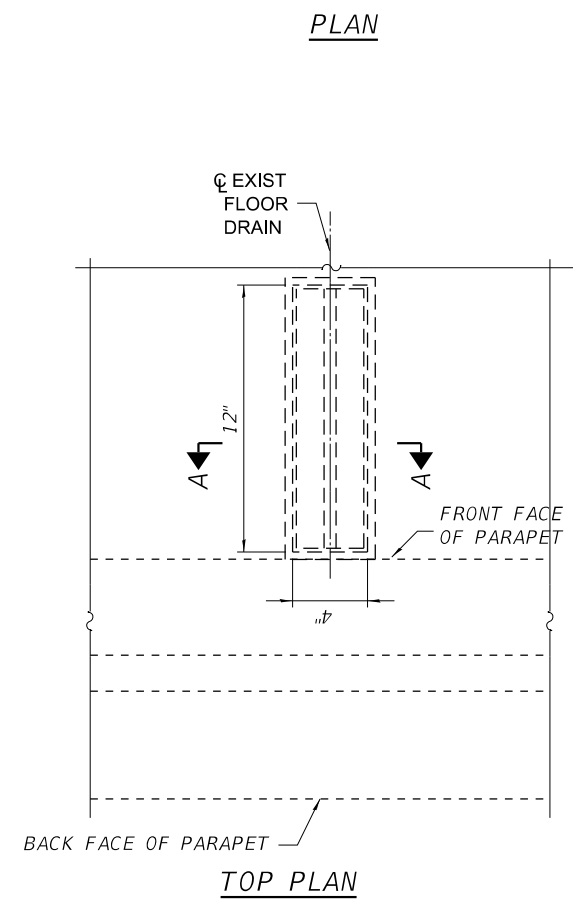


PREFORMED JOINT SEAL

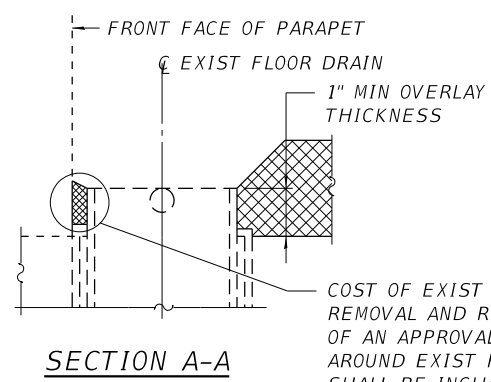
Location and Mixture Use(s):	Waterproof System	
PG:	Surface	Binder
Design Air Voids	SBS PG 70-28	SBS PG 76-22
Mixture Composition	4.0 @ N50	4.0 @ N50
Friction Aggregate	SMA 9.5	IL 4.75
Mix Weight	D	N/A
Quality Management Program	112 lb/sy/in	N/A
Sublot Size	QC/QA	QC/QA
Material Transfer Device	N/A	N/A

HMA

Location(s):	Surface
Mixture Use(s):	Surface
Binder Grade (AC/PG):	PG 58-28
Design Air Voids:	4.0 @ Ndes=50
Mixture Composition: (Mixture Gradation):	IL 9.5
Friction Aggregate:	Mixture "D"
Mixture Weight:	112 LB/SQ YD/IN
Quality Management Program:	QC/QA
Sublot Size:	N/A



TOP PLAN



SECTION A-A

COST OF EXIST JOINT SEAL REMOVAL AND REPLACEMENT OF AN APPROVAL JOINT SEAL AROUND EXIST FLOOR DRAINS SHALL BE INCLUDED IN THE COST OF "HOT-MIX ASPHALT SURFACE COURSE, IL 9.5 MIX "D" , N50

TREATMENT AT FLOOR DRAINS

MODEL: Default
FILE NAME: \\kpf.com\dfs\Brdg\2300695 (WO 8)\02_Design (MS)\e4563-05 - 0082 Wearing Surface.dgn

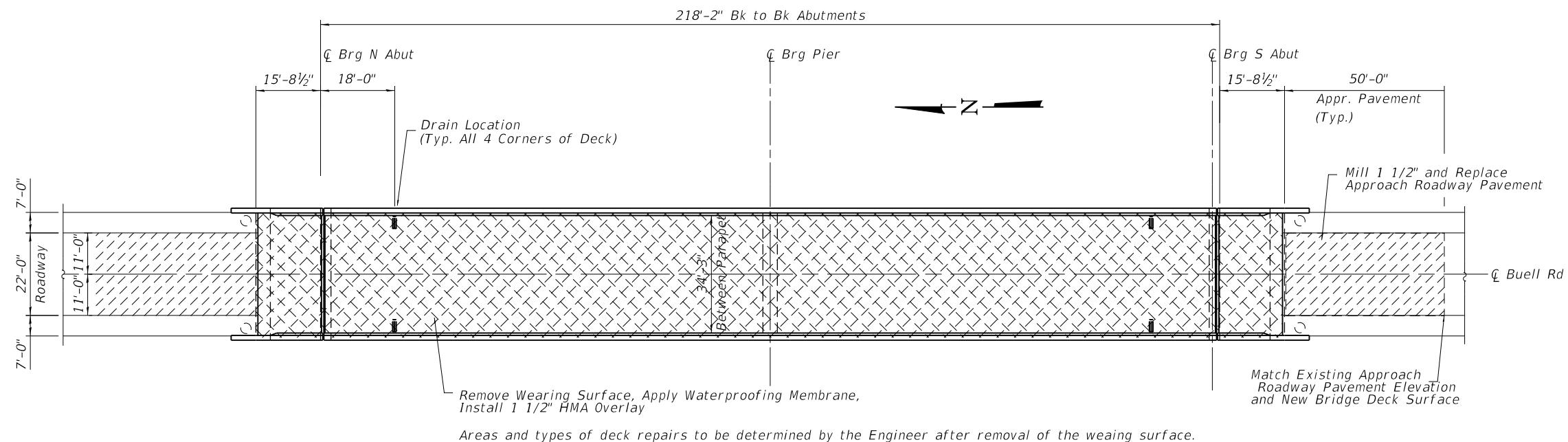


USER NAME =	DESIGNED -	REVISED -
PLOT SCALE =	CHECKED -	REVISED -
PLOT DATE =	DRAWN -	REVISED -
	CHECKED -	REVISED -

STATE OF ILLINOIS
DEPARTMENT OF TRANSPORTATION

SN 098-0082 RIVERDALE RD. AND SN 098-0083 BUELL RD. OVER I-88
WEARING SURFACE REPLACEMENT

F.A.I. RTE.	SECTION	COUNTY	TOTAL SHEETS	SHEET NO.
88	(195-3HB-3 & 195-3HB2)BR	WHITESIDE	8	5
SN 098-0082 & 0083			CONTRACT NO. 64S63	
ILLINOIS FED. AID PROJECT				

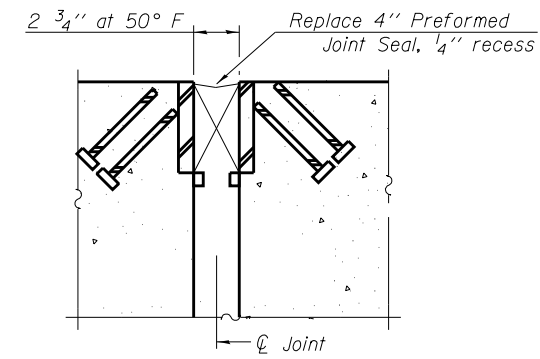


PLAN

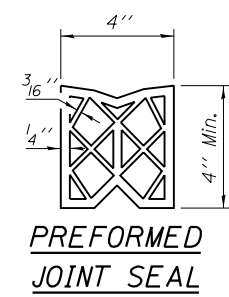
Location and Mixture Use(s):	Waterproof System	
	Surface	Binder
PG:	SBS PG 70-28	SBS PG 76-22
Design Air Voids	4.0 @ N50	4.0 @ N50
Mixture Composition	SMA 9.5	IL 4.75
Friction Aggregate	D	N/A
Mix Weight	112 lb/sy/in	N/A
Quality Management Program	QC/QA	QC/QA
Sublot Size	N/A	N/A
Material Transfer Device	N/A	N/A

~~HMA~~

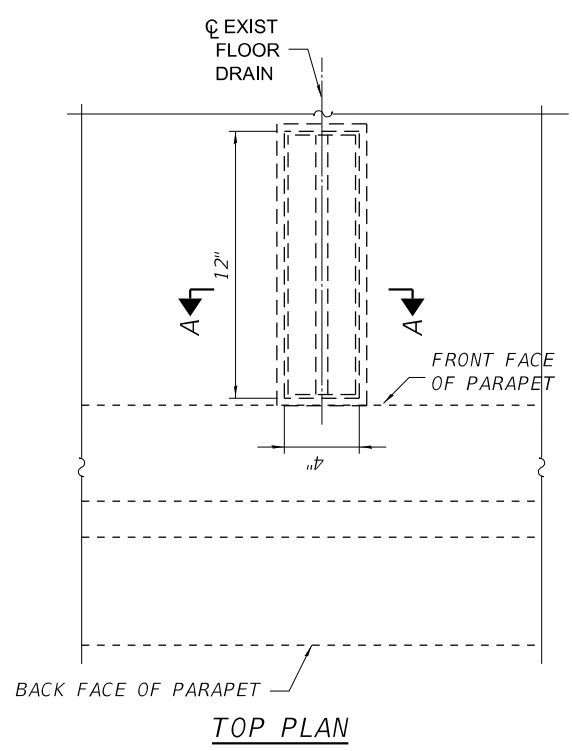
Location(s):	Surface
Mixture Use(s):	Surface
Binder Grade (AC/PG):	PG 58-28
Design Air Voids:	4.0 @ Ndes=50
Mixture Composition: (Mixture Gradation):	IL 9.5
Friction Aggregate:	Mixture "D"
Mixture Weight:	112 LB/SQ YD/IN
Quality Management Program:	QC/QA
Sublot Size:	N/A



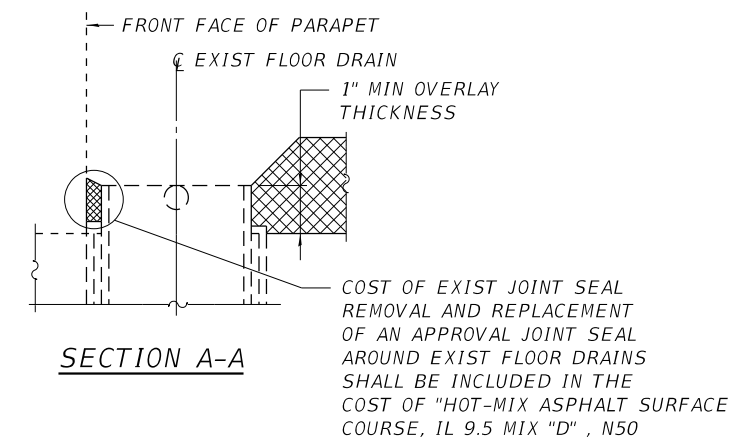
EXISTING JOINT



PREFORMED JOINT SEAL



TOP PLAN



SECTION A-A

TREATMENT AT FLOOR DRAINS

MODEL: Default
FILE NAME: \\kpf.com\dfs\Brdge\2300695 (WO 8)\02_Design (MS)\e4563-07 - 0083 Wearing Surface.dgn
12/5/2023 8:51:43 AM



USER NAME =	DESIGNED -	REVISED -
PLOT SCALE =	CHECKED -	REVISED -
PLOT DATE =	DRAWN -	REVISED -
	CHECKED -	REVISED -

STATE OF ILLINOIS
DEPARTMENT OF TRANSPORTATION

SN 098-0082 RIVERDALE RD. AND SN 098-0083 BUELL RD. OVER I-88
WEARING SURFACE REPLACEMENT

F.A.I RTE.	SECTION	COUNTY	TOTAL SHEETS	SHEET NO.
88	(195-3HB-3 & 195-3HB2)BR	WHITESIDE	8	7
SN 098-0082 & 0083		CONTRACT NO. 64S63		
ILLINOIS FED. AID PROJECT				