

STATE OF ILLINOIS
DEPARTMENT OF TRANSPORTATION

F.A.P. RTE.	SECTION	COUNTY	TOTAL SHEETS	SHEET NO.
594	(580, 581)PP	MADISON	5	1
		ILLINOIS	CONTRACT NO. 76T19	

FOR INDEX OF SHEETS, SEE SHEET NO. 2

TRAFFIC DATA

EAGLE PARK RD TO THE ST CLAIR COUNTY LINE IN MADISON

2023 ADT = 13500 (ACTUAL)
2024 ADT = 13600 (ESTIMATED)
2045 ADT = 15300 (ESTIMATED)
SU = 4.4% MU = 5.6%

**PROPOSED
HIGHWAY PLANS**

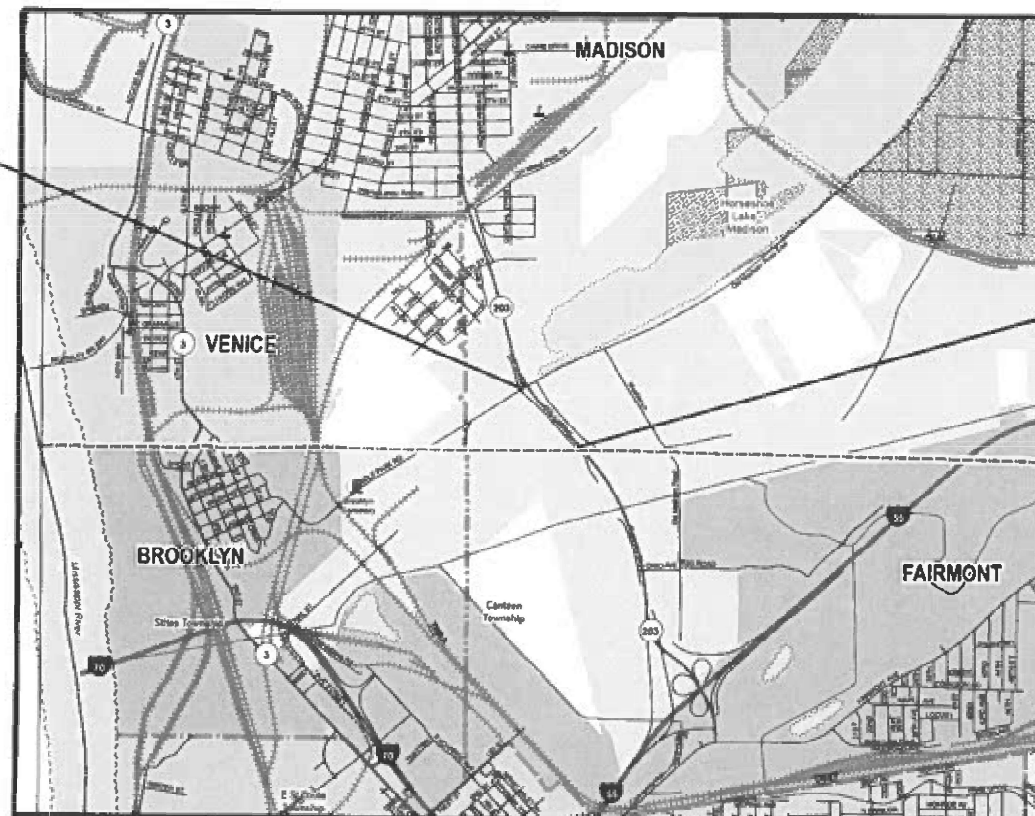
FAP ROUTE 594 (IL 203)
SECTION (580, 581)PP

PATCHING-CM
MADISON COUNTY

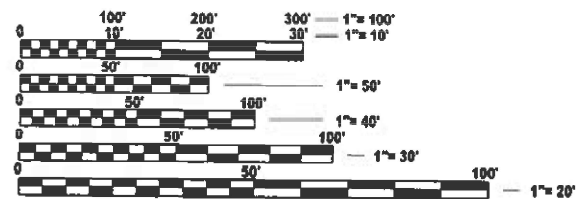
C-98-090-23



BEGIN IMPROVEMENTS
STATION 189+75
LAT: 38.6643
LONG: -90.1425



END IMPROVEMENTS
STATION 168+35.50
LAT: 38.6419
LONG: -90.1271



FULL SIZE PLANS HAVE BEEN PREPARED USING STANDARD ENGINEERING SCALES. REDUCED SIZED PLANS WILL NOT CONFORM TO STANDARD SCALES. IN MAKING MEASUREMENTS ON REDUCED PLANS, THE ABOVE SCALES MAY BE USED.

J.U.L.I.E.
JOINT UTILITY LOCATION INFORMATION FOR EXCAVATION
1-800-892-0123
OR 811

PROJECT ENGINEER - CHERYL KEPLAR
PROJECT MANAGER - TONI MANN

CONTRACT NO. 76T19

NET LENGTH = 2059.2 FT. = 0.39 MILE

STATE OF ILLINOIS
DEPARTMENT OF TRANSPORTATION

SUBMITTED DECEMBER 12 2023
Kirk H. Brown
REGIONAL ENGINEER

February 2, 2024
Scott A. Etk
ENGINEER OF DESIGN AND ENVIRONMENT

February 2, 2024
Stephen M. Smith
DIRECTOR OF HIGHWAYS PROJECT IMPLEMENTATION

**PRINTED BY THE AUTHORITY
OF THE STATE OF ILLINOIS**

INDEX OF SHEETS

1. COVER
2. INDEX OF SHEETS, STANDARDS, GENERAL NOTES & COMMITMENTS
3. SUMMARY OF QUANTITIES
4. TYPICAL SECTIONS
5. SCHEDULE OF QUANTITIES

STANDARDS

- 000001-08 STANDARD SYMBOLS, ABBREVIATIONS AND PATTERNS
- 001006 DECIMAL OF AN INCH AND OF A FOOT
- 420001-10 PAVEMENT JOINTS
- 420701-03 PAVEMENT WELDED WIRE REINFORCEMENT
- 442101-09 CLASS B PATCHES
- 701301-04 LANE CLOSURE, 2L, 2W SHORT TERM OPERATIONS
- 701422-10 LANE CLOSURE, MULTILANE, FOR SPEEDS ≥ 45 MPH TO 55 MPH
- 701426-09 LANE CLOSURE, MULTILANE, INTERMITTENT OR MOVING OPER., FOR SPEEDS ≥ 45 MPH
- 701501-06 URBAN LANE CLOSURE, 2L, 2W UNDIVIDED
- 701701-10 URBAN LANE CLOSURE, MULTILANE INTERSECTION
- 701901-09 TRAFFIC CONTROL DEVICES

GENERAL NOTES

1. UTILITIES KNOWN TO HAVE FACILITIES WITHIN THE PROJECT AREA:
AMEREN ILLINOIS-GAS & ELECTRIC
AT&T -COMMUNICATIONS
CHARTER COMMUNICATIONS, INC-CABLE TV
ILLINOIS AMERICAN WATER COMPANY-WATER
2. THE CONTRACTOR AND THE ENGINEER SHALL BE AWARE THAT NO SURVEY WAS PERFORMED FOR THIS PROJECT, THE STATIONING, TOPOGRAPHY AND QUANTITIES SHOWN ON THESE PLANS WERE CREATED USING MICROFILM AND FIELD MEASUREMENTS. ALL SHALL BE ASSUMED TO BE APPROXIMATE. THE CONTRACTOR SHALL VERIFY DIMENSIONS AND CONDITIONS IN THE FIELD PRIOR TO CONSTRUCTION AND ORDERING OF MATERIALS.
3. FLAGGERS SHALL BE REQUIRED AT ALL TIMES DURING PATCHING OPERATIONS.
4. HIGH EARLY STRENGTH CONCRETE FOR PAVEMENT PATCHING WILL BE ALLOWED.
5. THE ILLINOIS DEPARTMENT OF TRANSPORTATION STRONGLY ENCOURAGES THE PRIME CONTRACTOR AND THEIR APPROVED SUB-CONTRACTORS TO HIRE MINORITY, WOMEN AND DISADVANTAGED INDIVIDUALS FROM ITS FEDERALLY FUNDED HIGHWAY CONSTRUCTION CAREERS TRAINING PROGRAM (HCCTP) TO HELP MEET WORKFORCE AND TRAINEE GOALS. THIS PROGRAM IS TRAINING MINORITIES, WOMEN AND DISADVANTAGED INDIVIDUALS IN HIGHWAY CONSTRUCTION-RELATED SKILLS, E.G., MATH FOR THE TRADES, JOB READINESS, TECHNICAL SKILLS COURSEWORK (CARPENTRY, CONCRETE FLATWORK, BLUEPRINT READING, SITE PLANS, SITE WORK, TOOLS USE, ETC.) AND OSHA 10 HOUR CERTIFICATION, TO PREPARE THEM FOR A CAREER IN THE HIGHWAY CONSTRUCTION TRADES. GRADUATES ARE WELL-TRAINED AND READY TO BECOME PRODUCTIVE ENTRY-LEVEL CONSTRUCTION WORKERS. PLEASE CONTACT THE DISTRICT 8 EEO OFFICE AT 618-346-3360 AND/OR THE HCCTP COORDINATOR AT 618-874-6528 TO LEARN MORE ABOUT THE PROGRAM AND FOR ASSISTANCE IN MEETING WORKFORCE AND TRAINEE GOALS.
6. THE CONTRACTOR SHALL EXERCISE CAUTION TO NOT DAMAGE DETECTOR LOOPS OR LEAD-IN WIRES. ANY DAMAGE SHALL BE REPAIRED AT THE CONTRACTOR'S EXPENSE. NO ADDITIONAL COMPENSATION WILL BE ALLOWED.

COMMITMENTS

NONE

REV. - MS

MODEL: General notes (Sheet)
FILE NAME: c:\pwworking\lewis\skid0886571\0876119-shi-cgenote.dgn

USER NAME = Kevin.Lewis	DESIGNED -	REVISED -
	DRAWN -	REVISED -
PLOT SCALE = 0.16666633' / in.	CHECKED -	REVISED -
PLOT DATE = 11/29/2023	DATE -	REVISED -

**STATE OF ILLINOIS
DEPARTMENT OF TRANSPORTATION**

INDEX OF SHEETS, STANDARDS, GENERAL NOTES & COMMITMENTS

SCALE: SHEET OF 5 SHEETS STA. TO STA.

F.A.P. RTE.	SECTION	COUNTY	TOTAL SHEETS	SHEET NO.
594	(580, 581)JP	MADISON	5	2
CONTRACT NO. 76T19				
ILLINOIS FED. AID PROJECT				

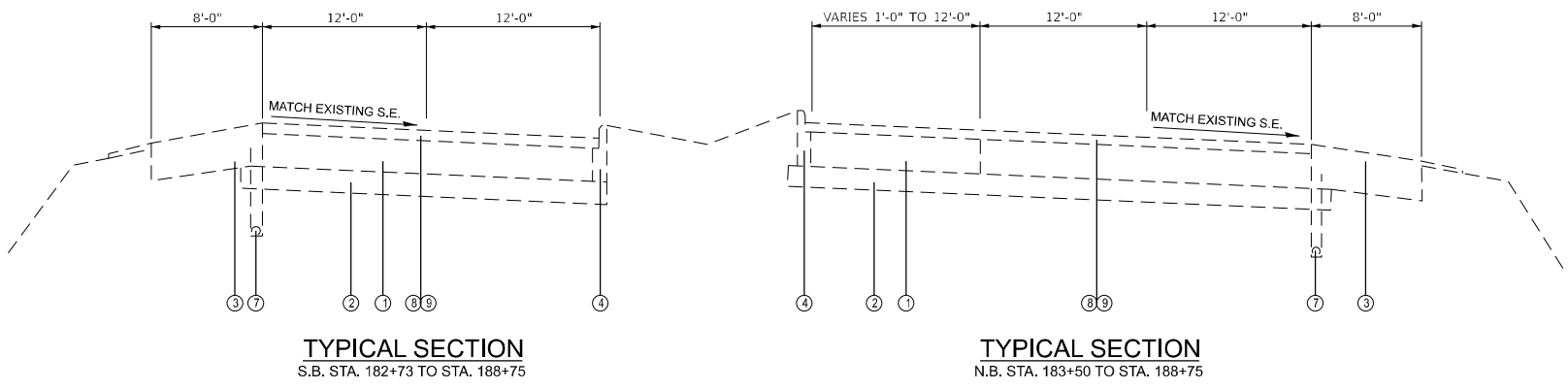
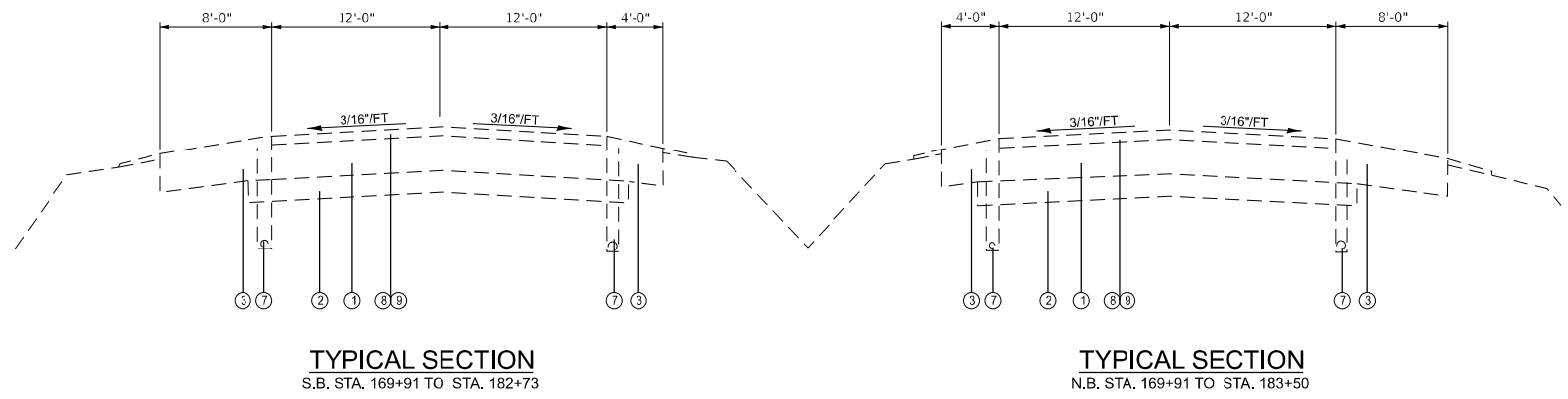
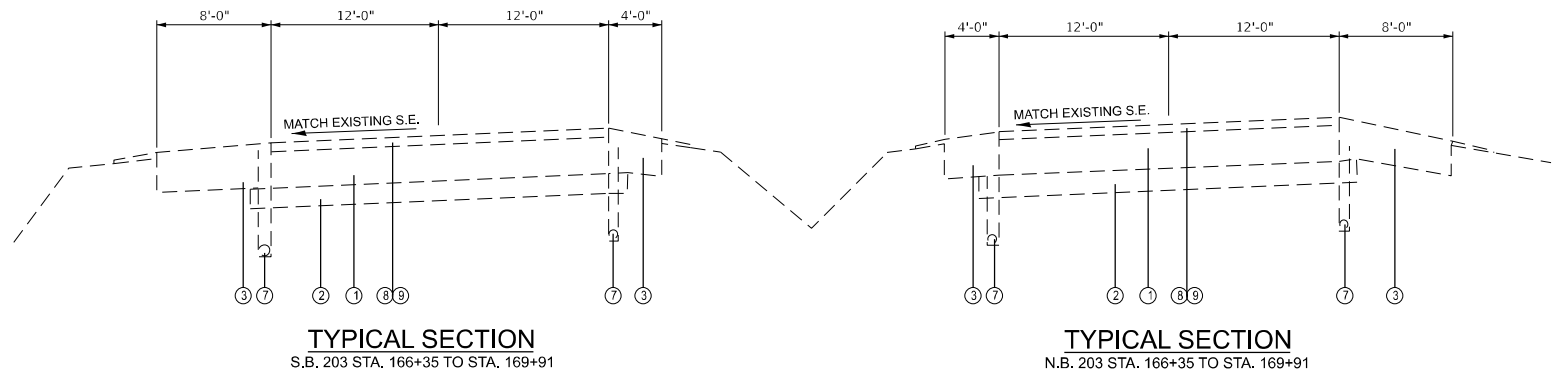
CODE NO.	ITEM	UNIT	TOTAL QUANTITY	CONSTR. CODE	
				100% STATE ROADWAY	0006 URBAN
4420050	WELDED WIRE REINFORCEMENT	SQ YD	38	38	
4420107	CLASS B PATCHES, TYPE II, 13 INCH	SQ YD	496	496	
44201011	CLASS B PATCHES, TYPE III, 13 INCH	SQ YD	38	38	
44201299	DOWEL BARS 1 1/2"	EACH	1176	1176	
44213200	SAW CUTS	FOOT	2518	2518	
67100100	MOBILIZATION	L SUM	1	1	
70100320	TRAFFIC CONTROL AND PROTECTION, STANDARD 701422	L SUM	1	1	
70102620	TRAFFIC CONTROL AND PROTECTION, STANDARD 701501	L SUM	1	1	
70102635	TRAFFIC CONTROL AND PROTECTION, STANDARD 701701	L SUM	1	1	
Ø Z0076604	TRAINEES TRAINING PROGRAM GRADUATE	HOUR	500	500	
70200100	NIGHTTIME WORK ZONE LIGHTING	L SUM	1	1	

Ø 0042

REV. - MS

MODEL: SOQ (Sheet)
FILE NAME: c:\pw\work\pwr\lewis\skid0886571\0876T19-sh-SOQ.dgn

USER NAME = Kevin.Lewis	DESIGNED -	REVISED -	STATE OF ILLINOIS DEPARTMENT OF TRANSPORTATION	SUMMARY OF QUANTITIES			F.A.P. RTE.	SECTION	COUNTY	TOTAL SHEETS	SHEET NO.
PLOT SCALE = 0.16666633 / in.	DRAWN -	REVISED -					594	(580, 581)PP	MADISON	5	3
PLOT DATE = 11/29/2023	CHECKED -	REVISED -		SCALE:	SHEET	OF 5 SHEETS	STA.	TO STA.	CONTRACT NO. 76T19		
	DATE -	REVISED -		ILLINOIS FED. AID PROJECT							



- LEGEND**
- ① EXISTING 10" PCC PAVEMENT
 - ② EXISTING 6" SUB-BASE GRANULAR MATERIAL
 - ③ EXISTING BITUMINOUS SHOULDERS
 - ④ EXISTING CONCRETE CURB & GUTTER, M-6.24
 - ⑤ EXISTING CONCRETE CURB, 8"
 - ⑥ EXISTING CONCRETE MEDIAN
 - ⑦ EXISTING PIPE UNDERDRAINS
 - ⑧ EXISTING HOT MIX ASPHALT LEVEL BINDER, 3/4"
 - ⑨ EXISTING HOT MIX ASPHALT SURFACE COURSE, 1 1/2"
 - ⑩ EXISTING AGGREGATE SHOULDER

MODEL: Typical (Sheet)
 FILE NAME: c:\p\work\lewis\lewis\skad0886571\0876119-sh-typical.dgn

USER NAME = Kevin.Lewis	DESIGNED -	REVISED -
PLOT SCALE = 0.16666833' / in.	DRAWN -	REVISED -
PLOT DATE = 11/16/2023	CHECKED -	REVISED -
	DATE -	REVISED -

**STATE OF ILLINOIS
DEPARTMENT OF TRANSPORTATION**

TYPICAL SECTIONS			
SCALE:	SHEET	OF 5 SHEETS	STA. TO STA.

F.A.P. RTE.	SECTION	COUNTY	TOTAL SHEETS	SHEET NO.
594	(580, 581)PP	MADISON	5	4
CONTRACT NO. 76T19				
ILLINOIS FED. AID PROJECT				

CLASS B PATCHING SCHEDULE

LOCATION						CLASS B PATCHES, 13"		SAW CUTS	DOWEL BARS 1 1/2"	WELDED WIRE REINFORCEMENT
DIRECTION	LANE	MILE STATION	STATION	LENGTH	WIDTH	TY-II	TY-III	FT	EACH	SQ YDS
				FT	FT	SQ YDS	SQ YDS			
NB	DL	0	168+35.50	8	12	11		44	20	
NB	PL	0	168+35.50	8	12	11		44	20	
NB	PL	0.01	168+88.30	6	12	8		42	20	
NB	DL	0.02	169+41.10	6	12	8		42	20	
NB	DL	0.03	169+93.90	8	12	11		44	20	
NB	PL	0.03	169+93.90	8	12	11		44	20	
NB	DL	0.04	170+46.70	6	12	8		42	20	
NB	DL	0.05	170+99.50	12	12		16	48	20	16
NB	PL	0.06	171+52.30	12	12		16	48	20	16
NB	DL	0.09	173+10.70	8	12	11		44	20	
NB	DL	0.1	173+63.50	8	12	11		44	20	
NB	DL	0.2	178+91.50	6	12	8		42	20	
NB	PL	0.2	178+91.50	6	12	8		42	20	
NB	PL	0.25	181+55.50	8	12	11		44	20	
NB	DL	0.28	183+13.90	6	12	8		42	20	
NB	DL	0.3	184+19.50	8	12	11		44	20	
NB	PL	0.3	184+19.50	8	12	11		44	20	
NB	DL	0.35	186+83.50	8	12	11		44	20	
NB	PL	0.35	186+83.50	8	12	11		44	20	
NB	LT TL	0.35	186+83.50	6	12	8		42	20	
NB	DL	0.4	189+47.50	6	12	8		42	20	
SB	DL	0.4	189+47.50	6	12	8		42	20	
SB	PL	0.4	189+47.50	6	12	8		42	20	
SB	DL	0.4	188+94.70	6	12	8		42	20	
SB	DL	0.37	187+89.10	6	12	8		42	20	
SB	PL	0.37	187+89.10	6	12	8		42	20	
SB	DL	0.36	187+36.30	6	12	8		42	20	
SB	PL	0.36	187+36.30	6	12	8		42	20	
SB	DL	0.34	186+30.70	6	12	8		42	20	
SB	PL	0.34	186+30.70	6	12	8		42	20	
SB	DL	0.33	185+77.90	6	12	8		42	20	
SB	DL	0.31	184+72.30	8	12	11		44	20	
SB	DL	0.30	184+19.50	6	12	8		42	20	
SB	DL	0.28	183+13.90	6	12	8		42	20	
SB	DL	0.27	182+61.10	6	12	8		42	20	
SB	DL	0.25	181+55.50	6	12	8		42	20	
SB	PL	0.25	181+55.50	6	12	8		42	20	
SB	DL	0.22	179+97.10	6	12	8		42	20	
SB	PL	0.21	179+44.30	6	12	8		42	20	
SB	DL	0.20	178+91.50	8	12	11		44	20	
SB	DL	0.18	177+85.90	6	12	8		42	20	
SB	PL	0.18	177+85.90	6	12	8		42	20	
SB	DL	0.15	176+27.50	6	12	8		42	20	
SB	PL	0.15	176+27.50	6	12	8		42	20	
SB	PL	0.12	174+69.10	8	12	11		44	20	
SB	DL	0.11	174+16.30	6	12	8		42	20	
SB	DL	0.10	173+63.50	6	12	8		42	20	
SB	PL	0.10	173+63.50	6	12	8		42	20	
SB	DL	0.05	170+99.50	6	12	8		42	20	
SUB TOTAL						413	32	2098	980	32
PROJECTED FAILURES 20%						83	6	420	196	6
ROUNDED TOTAL						496	38	2518	1176	38

MODEL: schedule of quantities (Sheet)
FILE NAME: c:\p\work\lewis\lewis\skad0886571\087619-sht-schedule.dgn

USER NAME = Kevin.Lewis	DESIGNED -	REVISED -
	DRAWN -	REVISED -
PLOT SCALE = 0.16666833' / in.	CHECKED -	REVISED -
PLOT DATE = 1/4/2024	DATE -	REVISED -

**STATE OF ILLINOIS
DEPARTMENT OF TRANSPORTATION**

SCHEDULE OF QUANTITIES

SCALE: SHEET OF 5 SHEETS STA. TO STA.

F.A.P. RTE.	SECTION	COUNTY	TOTAL SHEETS	SHEET NO.
594	(580, 581)PP	MADISON	5	5
CONTRACT NO. 76T19				
ILLINOIS FED. AID PROJECT				