

STATE OF ILLINOIS
DEPARTMENT OF TRANSPORTATION

C.H. RTE.	SECTION	COUNTY	TOTAL SHEETS	SHEET NO.
15	110Q	BOND	5	1
		ILLINOIS	CONTRACT NO. 76T21	

FOR INDEX OF SHEETS, SEE SHEET NO. 2

TRAFFIC DATA

2021 ADT = 10 (ESTIMATED)
2023 ADT = 10 (ESTIMATED)
2041 ADT = 25 (ESTIMATED)
SU = 10.0% MU = 0.0%

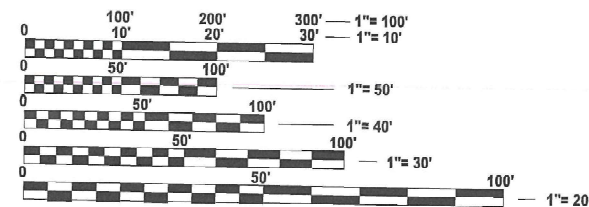
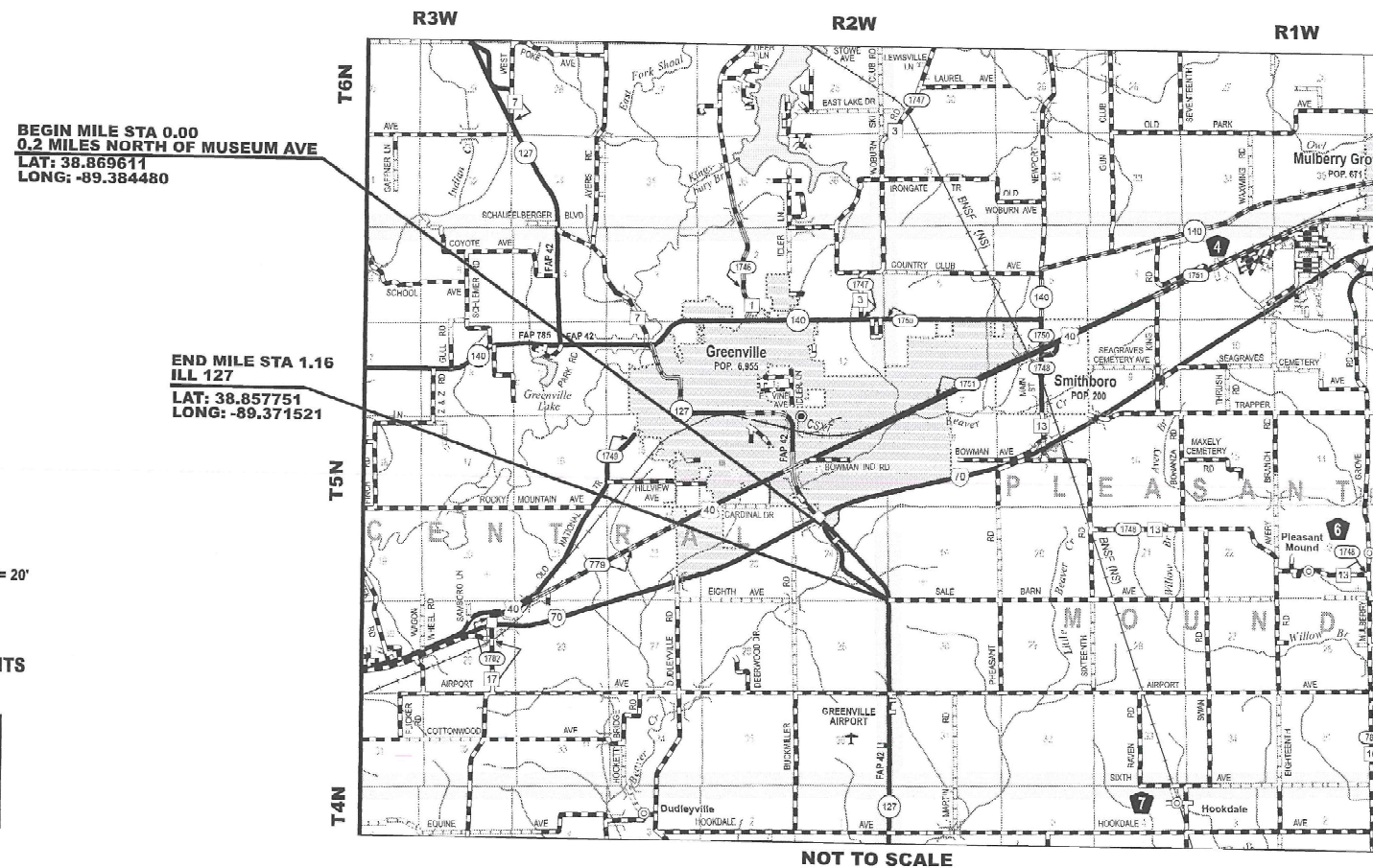
FUNCTIONAL CLASSIFICATION

LOCAL ROAD

**PROPOSED
HIGHWAY PLANS**

CH ROUTE 15 (OLD IL 127)
SECTION 110Q
PROJECT STATE
CHIP SEAL-A2 BITUMINOUS SURFACE TREATMENT
BOND COUNTY

C-98-107-23



FULL SIZE PLANS HAVE BEEN PREPARED USING STANDARD ENGINEERING SCALES. REDUCED SIZED PLANS WILL NOT CONFORM TO STANDARD SCALES. IN MAKING MEASUREMENTS ON REDUCED PLANS, THE ABOVE SCALES MAY BE USED.

J.U.L.I.E.
JOINT UTILITY LOCATION INFORMATION FOR EXCAVATION
1-800-892-0123
OR 811

PROJECT ENGINEER : BILLIE OWEN
PROJECT MANAGER : MEIWU AN

CONTRACT NO. 76T21

GROSS LENGTH = 6125 FT. = 1.16 MILE
NET LENGTH = 6125 FT. = 1.16 MILE

STATE OF ILLINOIS
DEPARTMENT OF TRANSPORTATION

SUBMITTED December 12, 2023
Kevin Brown
REGIONAL ENGINEER

February 2, 2024
Steph M. Smith
ENGINEER OF DESIGN AND ENVIRONMENT

February 2, 2024
Steph M. Smith
DIRECTOR OF HIGHWAYS PROJECT IMPLEMENTATION

**PRINTED BY THE AUTHORITY
OF THE STATE OF ILLINOIS**

INDEX OF SHEETS

- 1 COVER SHEET
- 2 INDEX OF SHEETS, HIGHWAY STANDARDS, GENERAL NOTES, & COMMITMENTS
- 3 SUMMARY OF QUANTITIES
- 4 TYPICAL SECTIONS
- 5 SCHEDULE OF QUANTITIES

HIGHWAY STANDARDS

- 000001-08 STANDARD SYMBOLS, ABBREVIATIONS AND PATTERNS
- 001006 DECIMAL OF AN INCH AND OF A FOOT
- 701006-05 OFF-RD OPERATIONS, 2L, 2W, 15' (4.5 m) TO 24" (600mm) FROM PAVEMENT EDGE
- 701301-04 LANE CLOSURE, 2L, 2W, SHORT TIME OPERATIONS
- 701306-04 LANE CLOSURE 2 LANE 2 WAY SLOW MOVING OPERATION, DAY ONLY 45MPH OR MORE
- 701901-09 TRAFFIC CONTROL DEVICES

GENERAL NOTES

- 1. AGENCIES KNOWN TO HAVE FACILITIES WITHIN THE PROJECT AREA ARE AS FOLLOWS:

UTILITY	ABOVE GROUND	BELOW GROUND
AMEREN ILLINOIS (GAS & ELECTRIC)	X	X
AT&T ILLINOIS (COMMUNICATIONS)	X	X
DEPARTMENT OF CENTRAL MANAGMENT SERVICES (COMMUNICATIONS)	X	X
CITY OF GREENVILLE (WATER & SANITARY SEWER)		X

- 2. THE RESIDENT ENGINEER SHALL VERIFY THE EXISTENCE OF HIGHWAY LIGHTING, INTELLIGENT TRANSPORTATION SYSTEMS (I.T.S) UTILITIES, AND/OR ELECTRICAL CABLES ASSOCIATED WITH TRAFFIC SIGNALS WITHIN THE PROJECT LIMITS. IF ANY OF THESE EXIST WITHIN THE PROJECT LIMITS, AND IF THESE ITEMS REQUIRE LOCATING, THE CONTRACTOR SHALL BE DIRECTED TO DO SO ACCORDING TO SECTION 803 OF THE STANDARD SPECIFICATIONS. THIS WORK SHALL BE PAID FOR ACCOURDING TO ARTICLE 109.04 OF THE STANDARD SPECIFICATIONS.

- 3. NO SURVEY WAS PERFORMED FOR THIS PROJECT AND THE PLANS WERE CREATED USING MICROFILM AND FIELD MEASUREMENTS.

- 4. ALL TURF AREAS DISTURBED BY THE CONTRACTOR SHALL BE SEEDED WITH THE APPROPRIATE EROSION CONTROL, AS DIRECTED BY THE ENGINEER, AT THE CONTRACTOR'S EXPENSE.

GENERAL NOTES (CONTINUED)

- 5. THE CONTRACTOR SHALL USE CA-16 FOR THE SEAL AND COVER AGGREGATE.

FOG SEAL QUANTITY IS CALCULATED USING A UNIT WEIGHT OF 0.05 LB/SQFT.

COMMITMENTS

NONE

REV. - MS

MODEL: General notes (Sheet)
FILE NAME: c:\pwworking\johnd092657\DRG\76T21-34-shr-genmnote.dgn

USER NAME = Joseph.Arteen	DESIGNED -	REVISED -
	DRAWN -	REVISED -
PLOT SCALE = 0.16666633' / in.	CHECKED -	REVISED -
PLOT DATE = 12/11/2023	DATE -	REVISED -

**STATE OF ILLINOIS
DEPARTMENT OF TRANSPORTATION**

**INDEX OF SHEETS, HIGHWAY STANDARDS
GENERAL NOTES AND COMMITMENTS**

SCALE: SHEET 1 OF 1 SHEETS STA. TO STA.

C.H. RTE.	SECTION	COUNTY	TOTAL SHEETS	SHEET NO.
15	110Q	Bond	5	2
CONTRACT NO. 76T21				
ILLINOIS FED. AID PROJECT				

CODE NO.	ITEM	UNIT	TOTAL QUANTITY	CONSTR. CODE
				100% STATE
				ROADWAY
				0005
				RURAL
67100100	MOBILIZATION	L SUM	1	1
70100460	TRAFFIC CONTROL AND PROTECTION, STANDARD 701306	L SUM	1	1
X1500005	BITUMINOUS SURFACE TREATMENT, A2	SQ YD	10208	10208
X4060107	BITUMINOUS MATERIALS (FOG SEAL)	POUND	4594	4594

MODEL: SQO (Sheet)
FILE NAME: c:\p\work\wv\wv\lantern\id0892657\0876134-shh-SQO.dgn

USER NAME = Joseph.Arteen	DESIGNED -	REVISED -
	DRAWN -	REVISED -
PLOT SCALE = 0.16666633' / in.	CHECKED -	REVISED -
PLOT DATE = 11/22/2023	DATE -	REVISED -

**STATE OF ILLINOIS
DEPARTMENT OF TRANSPORTATION**

SUMMARY OF QUANTITY

SCALE: SHEET 1 OF 1 SHEETS STA. TO STA.

C.H. RTE.	SECTION	COUNTY	TOTAL SHEETS	SHEET NO.
15	110Q	Bond	5	3
CONTRACT NO. 76T21			ILLINOIS FED. AID PROJECT	

RESURFACING SCHEDULE

MILE POINT	TO	MILE POINT	LENGTH	WIDTH	AREA	BITUMINOUS SURFACE TREATMENT, A2	BITUMINOUS MATERIALS (FOG SEAL)
CH 15			FOOT	FOOT	(SQ FT)	(SQYD)	(POUND)
0.00		1.16	6125	15	91875	10208	4594

MODEL: SCHEDULE (Sheet)
FILE NAME: c:\p\work\wv\illiantee\p\id0892657\0876121-sht-schedule.dgn.dgn

USER NAME = Joseph.Arteen	DESIGNED -	REVISED -
	DRAWN -	REVISED -
PLOT SCALE = 0.16666633' / in.	CHECKED -	REVISED -
PLOT DATE = 11/22/2023	DATE -	REVISED -

**STATE OF ILLINOIS
DEPARTMENT OF TRANSPORTATION**

SCHEDULE OF QUANTITY

SCALE: SHEET 1 OF 1 SHEETS STA. TO STA.

C.H. RTE.	SECTION	COUNTY	TOTAL SHEETS	SHEET NO.
15	110Q	Bond	5	5
CONTRACT NO. 76T21				
ILLINOIS FED. AID PROJECT				