

03-08-2024 LETTING ITEM 102

INDEX OF SHEETS

- 1 COVER SHEET
- 2 GENERAL NOTES, LEGEND, PAVEMENT DESIGN INFORMATION
- 3-4 SUMMARY OF QUANTITIES
- 5 TYPICAL SECTIONS
- 6-7 SCHEDULE OF QUANTITIES
- 8-19 COUNTY HIGHWAY 15 - ROADWAY PLANS
- 20-22 DETAILS

REQUIRED STANDARDS

- 000001-08 STANDARD SYMBOLS, ABBREVIATIONS, AND PATTERNS
- 701006-05 OFF-RD OPERATIONS, 2L, 2W, 15' (4.5m) TO 24" (600mm) FROM PAVEMENT EDGE
- 701201-05 LANE CLOSURE, 2L, 2W, DAY ONLY, FOR SPEEDS ≥ 45 MPH
- 701301-04 LANE CLOSURE, 2L, 2W, SHORT TERM OPERATIONS
- 701306-04 LANE CLOSURE 2L, 2W SLOW MOVING OPERATIONS DAY ONLY, FOR SPEEDS > 45MPH
- 701311-03 LANE CLOSURE 2L, 2W MOVING OPERATIONS - DAY ONLY
- 701901-09 TRAFFIC CONTROL DEVICES
- 780001-05 TYPICAL PAVEMENT MARKINGS

GAS & ELECTRIC

AMEREN ILLINOIS
200 W. WASHINGTON ST.
SPRINGFIELD, IL 62701

SUGAR CREEK WIND ONE
354 DAVIS RD.
OAKVILLE, ON CANADA

MENARD ELECTRIC COOP
14300 STATE HIGHWAY 97
PETERSBURG, IL 62675

LIBERTY UTILITIES
136 E. DEAN ST.
VIRDEN, IL 62690

PANHANDLE EASTERN PIPE LINE
4600 LAFAYETTE AVE.
BARTONVILLE, IL 61607

WATER & SEWER
VILLAGE OF MIDDLETOWN
MIKE VIRGIL

TELEPHONE & CABLE
FRONTIER COMMUNICATIONS
300 W. BEECHER AVE.
JACKSONVILLE, IL 62651

AT&T
VANESSA ROSS
VF2021@ATT.COM

MEDIACOM
DANIEL SALEE
DSALEE@MEDIACOMCC.COM



FULL SIZE PLANS HAVE BEEN PREPARED USING STANDARD ENGINEERING SCALES. REDUCED SIZE PLANS WILL NOT CONFORM TO STANDARD SCALES. IN MAKING MEASUREMENTS ON REDUCED PLANS THE ABOVE SCALES MAY BE USED.

J.U.L.I.E.
JOINT UTILITY LOCATION INFORMATION FOR EXCAVATION
1-800-892-0123 OR 811

STATE OF ILLINOIS

DEPARTMENT OF TRANSPORTATION

PLANS FOR PROPOSED SURFACE TRANSPORTATION / RURAL PROGRAM

LOGAN COUNTY
CH 15 (FAS 565)/100TH AVENUE
SECTION 16-00034-03-RS
PROJECT NO. BUIU(126)
JOB NO. C-96-064-18

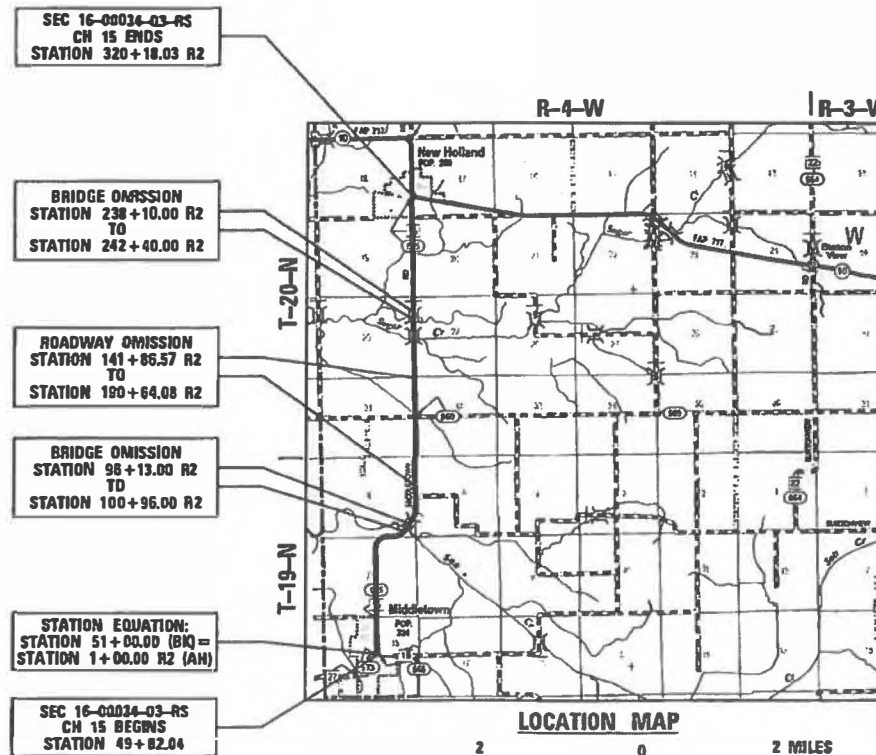
F.A.S. RTE.	SECTION	COUNTY	TOTAL SHEETS	SHEET NO.
565	16-00034-03-RS	LOGAN	22	1
		ILLINOIS	CONTRACT NO. 93814	



DESIGN CLASSIFICATION: MAJOR COLLECTOR
CURRENT ADT (2022): 900

DESCRIPTION OF WORK

THIS PROJECT CONSISTS OF BITUMINOUS RESURFACING TO IMPROVE COUNTY HIGHWAY 15 INCLUDING PAVEMENT MARKING.

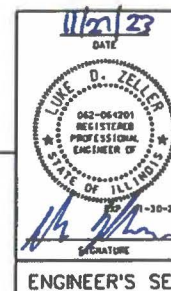


GROSS LENGTH = 32,035.99 FT. = 6.067 MILES
NET LENGTH = 26,245.48 = 4.971 MILES



PLOT DATE = 11/20/23
 FILE NAME = V:\93814 - CH 15 Resurfacing - Logan Co\LOGAN\LOGAN\CH15\16-00034-03-RS.dwg
 PLOT SCALE = 1/8" = 100'
 USER NAME = L11111

CONTRACT NO. 93814



APPROVED	11/22	20 23
	<i>[Signature]</i>	
	LOGAN COUNTY ENGINEER	
PASSED	Dec. 7	20 23
	<i>[Signature]</i>	
	DISTRICT SIX ENGINEER OF LOCAL ROADS & STREETS	
Releasing For Bid Based on Limited Review	Dec 9	20 23
	<i>[Signature]</i>	
	DEPUTY DIRECTOR OF HIGHWAYS, REGION FOUR ENGINEER	
	STATE OF ILLINOIS	
	DEPARTMENT OF TRANSPORTATION	

GENERAL NOTES

1. THE LOCATION OF UNDERGROUND UTILITIES SHOWN ON THE PLANS REPRESENTS THE BEST KNOWLEDGE OF THE COUNTY AND THE INDICATED ADJUSTMENTS OR RECONSTRUCTION ARE CONSIDERED TO BE REASONABLY ACCURATE. IT SHALL BE THE CONTRACTOR'S RESPONSIBILITY TO VERIFY LOCATIONS OF UNDERGROUND INSTALLATIONS BEFORE STARTING CONSTRUCTION OPERATIONS. THE CONTRACTOR SHALL INDEMNIFY THE COUNTY, ITS OFFICERS, AND EMPLOYEES AGAINST ALL CLAIMS DUE TO DAMAGE TO CORPORATE OR PRIVATE PROPERTY RESULTING FROM HIS CONSTRUCTION OPERATIONS AS DESCRIBED IN ARTICLE 107.20 AND 107.26 OF THE STANDARD SPECIFICATIONS FOR ROAD AND BRIDGE CONSTRUCTION.
2. THE CONTRACTOR SHALL NOTIFY THE AGENCIES AND UTILITIES AT LEAST 10 (TEN) DAYS PRIOR TO ANY CONSTRUCTION IN THE AREA AND SHALL COMPLY WITH ALL RESTRICTIONS FOR EQUIPMENT MOVEMENTS AND CLEARANCES AS REGARDS TO THEIR FACILITIES.
3. BEFORE STARTING ANY EXCAVATION, THE CONTRACTOR MUST CALL J.U.L.I.E. AT 1-800-892-0123 FOR FIELD LOCATIONS OF BURIED ELECTRICAL, TELEPHONE, GAS FACILITIES, AND ALL PUBLIC UTILITIES. A 48 HOUR NOTIFICATION IS REQUIRED.
4. WHENEVER IT IS NECESSARY TO REMOVE BITUMINOUS AGGREGATE MIXTURE, OIL AND CHIP SURFACE, EXISTING GRAVEL OR CRUSHED STONE BASE COURSE, IT SHALL BE REMOVED AT THE EXPENSE OF THE CONTRACTOR. NO ADDITIONAL COMPENSATION WILL BE ALLOWED FOR ADDITIONAL LABOR OR EQUIPMENT REQUIRED.
5. WHEN DURING CONSTRUCTION OPERATIONS ANY LOOSE MATERIAL IS DEPOSITED IN THE FLOW LINE OF DITCHES, GUTTER OR DRAINAGE STRUCTURES SO THAT THE NATURAL FLOW OF WATER IS OBSTRUCTED, IT SHALL BE REMOVED AT THE CLOSE OF EACH WORKING DAY. AT THE CONCLUSION OF THE CONSTRUCTION OPERATIONS, ALL DRAINAGE STRUCTURES SHALL BE FREE FROM ALL DIRT AND DEBRIS. THIS WORK WILL NOT BE PAID FOR SEPARATELY BUT SHALL BE INCLUDED IN THE COST OF THE HOT-MIX ASPHALT PAVING.
6. THE CONTRACTOR SHALL BE REQUIRED TO PROVIDE ACCESS TO ABUTTING PROPERTY AT ALL TIMES DURING THE CONSTRUCTION OF THIS IMPROVEMENT.
7. TRAFFIC CONTROL SIGNS REMOVED MUST BE RESET AT THEIR PERMANENT LOCATIONS IN A WORKMANLIKE MANNER AND VISIBLE TO TRAFFIC ON THE ROADWAY. THESE SIGNS SHALL BE INSTALLED IN ACCORDANCE WITH THE 'MANUAL ON UNIFORM TRAFFIC CONTROL DEVICES FOR STREET AND HIGHWAYS', LATEST EDITION.
8. THE NOMINAL THICKNESS FOR THE SURFACE COURSE IS SHOWN ON THE SPECIAL DETAIL. THE CONSTRUCTED THICKNESS OF THE ABOVE ITEMS SHALL NOT BE LESS THAN 90 PERCENT OF THE NOMINAL THICKNESS AT ANY LOCATION.
9. WHERE SECTION OR SUBSECTION STONES OR MARKERS ARE ENCOUNTERED, THE ENGINEER SHALL BE NOTIFIED BEFORE SUCH STONES ARE REMOVED. THE CONTRACTOR SHALL PROTECT AND CAREFULLY PRESERVE ALL PROPERTY MARKERS UNTIL THE OWNER, AN AUTHORIZED SURVEYOR, OR AGENT HAS WITNESSED OR OTHERWISE REFERENCED THEIR LOCATION.
10. ALL PROPOSED PAVEMENT WIDTHS ARE MEASURED EDGE TO EDGE OF PAVEMENT UNLESS OTHERWISE SHOWN ON THE PLANS. INTERSECTION RETURN RADII ARE MEASURED TO THE EDGE OF PAVEMENT.
11. KNOWN UTILITIES LOCATED WITHIN THE LIMITS OF THIS IMPROVEMENT ARE:
 AMEREN ILLINOIS
 FRONTIER COMMUNICATIONS
 MENARD ELECTRIC COOP
 PANHANDLE EASTERN PIPE LINE
 SUGAR CREEK WIND ONE
 LIBERTY UTILITIES
 VILLAGE OF MIDDLETOWN
 MEDIACOM
 AT&T

HOT-MIX ASPHALT MIXTURE REQUIREMENTS

	HMA SURFACE	HMA BINDER
PG GRADE:	PG 64-22	PG 64-22
DESIGN AIR VOIDS:	4% @ N50	4% @ N50
MIXTURE COMPOSITION:	IL-9.5	IL-9.5 FG
FRICTION AGGREGATE:	MIXTURE C	N/A
QUALITY MANAGEMENT PROGRAM:	QC/QA	QC/QA

FACTORS FOR ESTIMATING PLAN QUANTITIES ARE AS FOLLOWS AND SHALL NOT BE USED FOR THE BASIS OF FINAL QUANTITIES:

HOT-MIX ASPHALT BINDER COURSE	112 LB/SQ YD/IN
HOT-MIX ASPHALT SURFACE COURSE	112 LB/SQ YD/IN
AGGREGATE (SURFACE, BASE, & BACKFILL)	2.05 TON/CU YD
BITUMINOUS MATERIALS:	
PRIME COAT FOR AGREGATE BASES	0.25 LB/SF
TACK COAT FOR HMA LIFTS	0.025 LB/SF
RIP RAP	1.5 TON/CU YD
TEMPORARY EROSION CONTROL SEEDING	100 LB/ACRE
MULCH	2 TON/ACRE

LEGEND



HOT-MIX ASPHALT SURFACE REMOVAL

**LOGAN COUNTY
HIGHWAY DEPARTMENT**

**COUNTY HIGHWAY 15
GENERAL NOTES & PAVEMENT DESIGN INFORMATION**

F.A.S. RTE.	SECTION	COUNTY	TOTAL SHEETS	SHEET NO.
565	16-00034-03-R5	LOGAN	22	2
CONTRACT NO. 93814				
			ILLINOIS	FED. AID PROJECT

SCALE: N/A SHEET 1 OF 1 SHEETS STA. N/A TO STA. N/A

USER NAME = BDeCraene	DESIGNED -	REVISED -
	DRAWN -	REVISED -
PLOT SCALE = 0.16666633' / in.	CHECKED -	REVISED -
PLOT DATE = 11/20/2023	DATE -	REVISED -

CONSTR. CODE

CODE NO.	ITEM	UNIT	TOTAL QUANTITY	CONSTR. CODE	
				ROADWAY 0005	RURAL
40200800	AGGREGATE SURFACE COURSE, TYPE B	TON	88	88	
40600290	BITUMINOUS MATERIALS (TACK COAT)	POUND	32700	32700	
40600370	LONGITUDINAL JOINT SEALANT	FOOT	26249	26249	
40600982	HOT-MIX ASPHALT SURFACE REMOVAL - BUTT JOINT	SQ YD	1708	1708	
40602965	HOT-MIX ASPHALT BINDER COURSE, IL-9.5FG, N50	TON	5867	5867	
40604050	HOT-MIX ASPHALT SURFACE COURSE, IL-9.5, MIX "C", N50	TON	7004	7004	
40800050	INCIDENTAL HOT-MIX ASPHALT SURFACING	TON	155	155	
44000156	HOT-MIX ASPHALT SURFACE REMOVAL, 1 3/4"	SQ YD	161	161	
44000157	HOT-MIX ASPHALT SURFACE REMOVAL, 2"	SQ YD	560	560	
48102100	AGGREGATE WEDGE SHOULDER, TYPE B	TON	1165	1165	
67100100	MOBILIZATION	L SUM	1	1	
70300100	SHORT TERM PAVEMENT MARKING	FOOT	6580	6580	
70300150	SHORT TERM PAVEMENT MARKING REMOVAL	SQ FT	2210	2210	
* 78001110	PAINT PAVEMENT MARKING - LINE 4"	FOOT	74376	74376	

* SPECIALTY ITEMS

MODEL: 500 Sheet 1
FILE NAME: V:\0210 - CH 15 - Acupuncture - Logan County/CADD Sheets/0210-15-500.dgn



USER NAME	= BDeCrane	DESIGNED	-	REVISED	-
PLOT SCALE	= 0.16666667 / in.	DRAWN	-	REVISED	-
PLOT DATE	= 11/01/2023	CHECKED	-	REVISED	-
		DATE	-	REVISED	-

**LOGAN COUNTY
HIGHWAY DEPARTMENT**

**COUNTY HIGHWAY 15
SUMMARY OF QUANTITIES**

SCALE: N/A SHEET 1 OF 2 SHEETS STA. N/A TO STA. N/A

F.A.S. RTE.	SECTION	COUNTY	TOTAL SHEETS	SHEET NO.
565	16-00034-03-R5	LOGAN	22	3
CONTRACT NO. 93814				
ILLINOIS FED. AID PROJECT				

MODEL: S00 Sheet 7
 FILE NAME: V:\0270 - CH 15 Resturfacing - Logan ConCAD\CAD Sheets\S00S-in-S00.dgn

CODE NO.	ITEM	UNIT	TOTAL QUANTITY	CONSTR. CODE	
				ROADWAY	RURAL
				0005	
* 78001180	PAINT PAVEMENT MARKING - LINE 24"	FOOT	49	49	
# 20076600	TRAINEES	Hour	1000		
X4401198	HOT-MIX ASPHALT SURFACE REMOVAL, VARIABLE DEPTH	SQ YD	358	358	
# 20076604	TRAINEES TRAINING PROGRAM GRADUATE	Hour	1000		
X7010216	TRAFFIC CONTROL AND PROTECTION, (SPECIAL)	L SUM	1	1	

* SPECIALTY ITEMS
0042

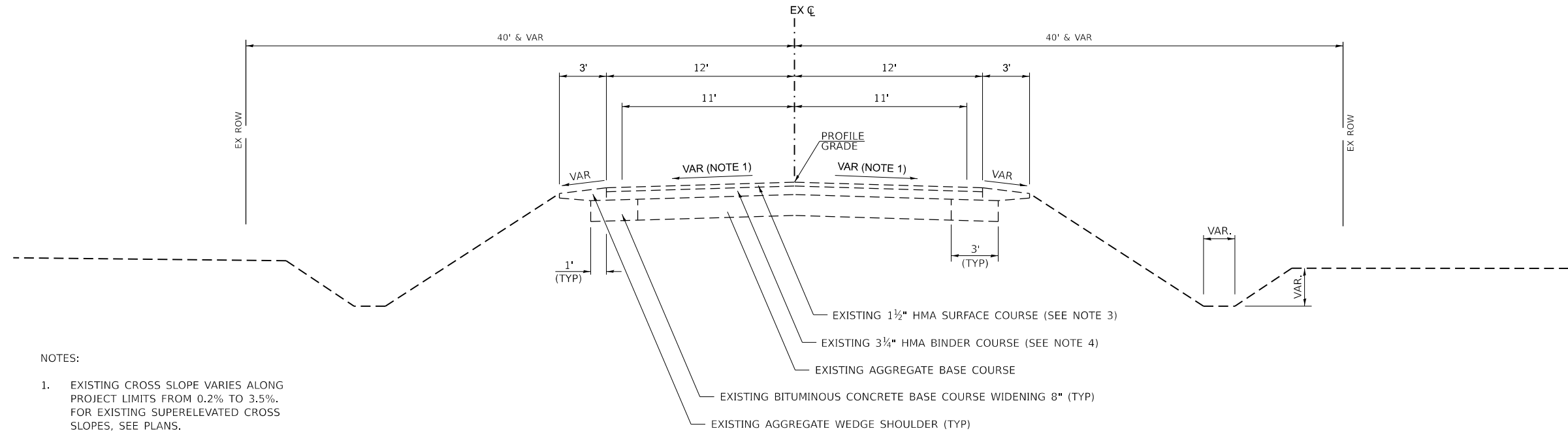


USER NAME = BDeCraene	DESIGNED -	REVISED -
	DRAWN -	REVISED -
PLOT SCALE = 0.16666633' / in.	CHECKED -	REVISED -
PLOT DATE = 11/20/2023	DATE -	REVISED -

**LOGAN COUNTY
HIGHWAY DEPARTMENT**

COUNTY HIGHWAY 15 SUMMARY OF QUANTITIES	
SCALE: N/A	SHEET 2 OF 2 SHEETS STA. N/A TO STA. N/A

F.A.S. RTE.	SECTION	COUNTY	TOTAL SHEETS	SHEET NO.
565	16-00034-03-RS	LOGAN	22	4
CONTRACT NO. 93814			ILLINOIS FED. AID PROJECT	

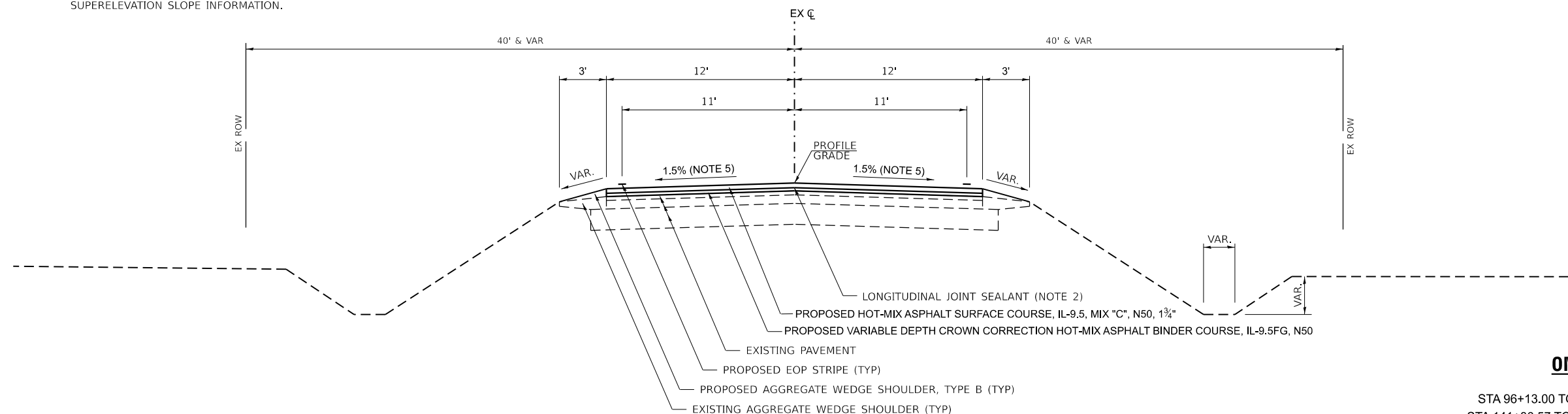


NOTES:

- EXISTING CROSS SLOPE VARIES ALONG PROJECT LIMITS FROM 0.2% TO 3.5%. FOR EXISTING SUPERELEVATED CROSS SLOPES, SEE PLANS.
- LONGITUDINAL JOINT SEALANT TO BE PLACED BETWEEN HOT-MIX ASPHALT SURFACE AND BINDER COURSES.
- EX. SURFACE COURSE THICKNESS VARIES FROM 1.25" TO 1.5" ALONG PROJECT LIMITS.
- EX. BINDER COURSE THICKNESS VARIES FROM 3.25" TO 3.5" ALONG PROJECT LIMITS.
- SEE CURVE DATA IN PLANS FOR SUPERELEVATION SLOPE INFORMATION.

**EXISTING TYPICAL SECTION
COUNTY HIGHWAY 15**

STA 49+82.0 R1 TO STA 51+00.0 R1
(STA EQ 51+00.0 R1 BK = STA 1+00.0 R2 AH)
STA 1+00.0 R2 TO STA 320+18.0 R2



**PROPOSED TYPICAL SECTION
COUNTY HIGHWAY 15**

STA 49+82.0 R1 TO STA 51+00.0 R1
(STA EQ 51+00.0 R1 BK = STA 1+00.0 R2 AH)
STA 1+00.0 R2 TO STA 320+18.0 R2 *

OMISSIONS

- STA 96+13.00 TO STA 100+96.00 (BRIDGE)
- STA 141+86.57 TO STA 190+64.08 (ROADWAY)
- STA 238+10.00 TO STA 242+40.00 (BRIDGE)

BRIDGE OVERLAYS

- STA 225+04.51 TO STA 227+14.43 (BRIDGE)
SEE STRUCTURE OVERLAY DETAIL

MODEL: UserMod.dwg
 FILE NAME: Y3S220 - CH 15 Resurficing - Logan Co/CADD/CADD_Sheets/150220-CH15typical.dwg



USER NAME = BDeCrane	DESIGNED -	REVISED -
	DRAWN -	REVISED -
PLOT SCALE = 0.1667' / in.	CHECKED -	REVISED -
PLOT DATE = 11/20/2023	DATE -	REVISED -

**LOGAN COUNTY
HIGHWAY DEPARTMENT**

**COUNTY HIGHWAY 15
TYPICAL SECTIONS**

SCALE: N/A SHEET 1 OF 1 SHEETS STA. N/A TO STA. N/A

F.A.S. RTE.	SECTION	COUNTY	TOTAL SHEETS	SHEET NO.
565	16-00034-03-R5	LOGAN	22	5
CONTRACT NO. 93814				
ILLINOIS FED. AID PROJECT				

HMA SURFACE REMOVAL						
LOCATION			1 3/4"	2"	BUTT JOINT	VARIABLE DEPTH
STATION +/- TO STATION +/-			SQ YD	SQ YD	SQ YD	SQ YD
COUNTY HIGHWAY 15						
49+82.0	TO	50+42.0			249	
51+00.0	=	1+00.0				
95+53.0	TO	96+13.0			161	
100+96.0	TO	101+56.0			160	
141+26.6	TO	141+86.6			161	
190+64.1	TO	191+24.1			160	
224+44.5	TO	225+04.5			160	
225+04.5	TO	227+14.4		560		
227+14.4	TO	227+74.4			160	
237+50.0	TO	238+10.0			160	
242+40.0	TO	243+00.0			160	
304+87.5	TO	305+58.7				190
305+58.7	TO	306+18.8	161			
306+18.8	TO	306+81.7				168
319+89.0	TO	320+18.0			177	
TOTAL			161	560	1708	358

PAVEMENT MARKING						
STATION TO STATION			PAINT PAVEMENT MARKING			
			4" SOLID WHITE EOP	4" SOLID YELLOW CENTERLINE	4" SKIP DASH YELLOW CENTERLINE	24" SOLID WHITE STOP BAR
			78001110			78001180
FOOT						
COUNTY HIGHWAY 15						
49+82.0	TO	51+00.0	141		26	21
51+00.0	=	1+00.0				
1+00.0	TO	11+38.8	1953		260	
11+38.8	TO	18+14.1	1351	675	170	
18+14.1	TO	18+40.5	53		10	
18+40.5	TO	23+26.3	971	486	130	
23+26.3	TO	28+86.5	1039		150	
28+86.5	TO	35+01.1	1229	615	160	
35+01.1	TO	35+89.3	177	177		
35+89.3	TO	42+13.6	1249	624	160	
42+13.6	TO	65+43.9	4661		590	
65+43.9	TO	71+34.6	1181	591	150	
71+34.6	TO	112+18.5	8168	8168		
112+18.5	TO	116+36.0	834	417	110	
116+36.0	TO	141+86.6	5015		640	
OMISSION STA 141+86.6 TO STA 190+64.1						
190+64.1	TO	207+09.1	3290		420	
207+09.1	TO	212+20.2	1022	511	130	
212+20.2	TO	216+38.3	836		110	
216+38.3	TO	220+03.8	731	366	100	
220+03.8	TO	267+88.7	9570		1200	
267+88.7	TO	274+23.6	1270	635	160	
274+23.6	TO	276+00.6	354		50	
276+00.6	TO	282+56.2	1311	656	170	
282+56.2	TO	314+77.6	6295		810	
314+77.6	TO	320+34.3	936	1113		28
SUB-TOTAL			53638	15032	5706	49
USE				74376		49

PAVEMENT							
LOCATION			BITUMINOUS MATERIALS (TACK COAT)	LONGITUDINAL JOINT SEALANT	HOT-MIX ASPHALT BINDER COURSE, IL-9.5FG, N50	HOT-MIX ASPHALT SURFACE COURSE, IL-9.5, MIX "C", N50	AGGREGATE WEDGE SHOULDER, TYPE B
STATION TO STATION			POUND	FOOT	TON	TON	TON
COUNTY HIGHWAY 15							
49+82.0	TO	51+00.0	182	118	34	40	4
51+00.0	=	1+00.0					
1+00.0	TO	96+13.0	11424	9513	2133	2488	420
OMISSION STA 96+013.0 TO STA 100+96.0							
100+96.0	TO	141+86.6	4936	4091	922	1075	185
OMISSION STA 141+86.6 TO STA 190+64.1							
190+64.1	TO	225+04.5	4129	3441	771	900	156
225+04.5	TO	227+14.4	252	210		63	
227+14.4	TO	238+10.0	1315	1096	246	287	51
OMISSION STA 238+10.0 TO STA 242+40.0							
242+40.0	TO	305+58.7	7583	6319	1416	1652	289
305+58.7	TO	306+18.8	73	61		16	
306+18.8	TO	320+18.0	1847	1400	345	403	60
TOTAL			31741	26249	5867	6924	1165

SHORT TERM PAVEMENT MARKING			
STATION TO STATION			SKIP DASH YELLOW CENTERLINE 70300100 FOOT
COUNTY HIGHWAY 15			
49+82.0	TO	51+00.0	30
51+00.0	=	1+00.0	
1+00.0	TO	96+13.0	2380
OMISSION STA 96+13.0 TO STA 100+96.0			
100+96.0	TO	141+86.6	1030
OMISSION STA 141+86.6 TO STA 190+64.1			
190+64.1	TO	238+10.0	1190
OMISSION STA 238+10.0 TO STA 242+40.0			
242+40.0	TO	320+18.0	1950
TOTAL			6580

SHORT TERM PAVEMENT MARKING REMOVAL			
STATION TO STATION			SKIP DASH YELLOW CENTERLINE 70300150 SQ FT
COUNTY HIGHWAY 15			
49+82.0	TO	51+00.0	10
51+00.0	=	1+00.0	
1+00.0	TO	96+13.0	800
OMISSION STA 96+13.0 TO STA 100+96.0			
100+96.0	TO	141+86.6	350
OMISSION STA 141+86.6 TO STA 190+64.1			
190+64.1	TO	238+10.0	400
OMISSION STA 238+10.0 TO STA 242+40.0			
242+40.0	TO	320+18.0	650
TOTAL			2210

MODEL: schedule sheet 1
 FILE NAME: V05020 - CH 15 Resurficing - Logan Co.CADD.CADD Sheets\02050205chschsheet1.dgn



USER NAME = BDeCraene	DESIGNED -	REVISED -
	DRAWN -	REVISED -
PLOT SCALE = 0.16666633' / in.	CHECKED -	REVISED -
PLOT DATE = 11/20/2023	DATE -	REVISED -

LOGAN COUNTY HIGHWAY DEPARTMENT

COUNTY HIGHWAY 15 SCHEDULE OF QUANTITIES			
SCALE: N/A	SHEET 1	OF 2 SHEETS	STA. N/A TO STA. N/A

F.A.S. RTE.	SECTION	COUNTY	TOTAL SHEETS	SHEET NO.
565	16-00034-03-R5	LOGAN	22	6
CONTRACT NO. 93814				
ILLINOIS FED. AID PROJECT				

ENTRANCES						
LOCATION			AGGREGATE SURFACE COURSE, TYPE B	BITUMINOUS MATERIALS (TACK COAT)	HOT-MIX ASPHALT SURFACE COURSE, IL-9.5, MIX "C", N50	INCIDENTAL HOT-MIX ASPHALT SURFACING
			40200800	40600290	40604050	40800050
Station	Side	Type	TON	POUND	TON	TON
COUNTY HIGHWAY 15						
50+59.61	LT	PE		12		3
51+00 = 1+00						
1+44.82	LT	PE		12		3
2+13.51	LT	PE		41		11
2+56.39	LT	ROAD		38	9	
3+10.02	RT	CE		59		15
4+07.76	LT	PE		10		3
4+66.60	RT	CE		15		4
5+70.85	RT	CE		18		5
6+04.38	LT	PE		15		4
8+13.29	LT	ROAD		34	8	
8+42.00	RT	CE		15		4
12+08.34	RT	CE		51		13
17+30.44	RT	FE	3			
20+37.89	LT	PE		13		4
21+14.39	LT	FE	2			
25+79.90	LT	ROAD		59	13	
25+88.66	RT	PE		15		4
27+13.30	RT	FE	2			
32+67.79	RT	FE	3			
35+16.55	LT	FE	2			
42+71.06	LT	FE	2			
52+36.36	RT	PE		17		5
52+52.00	LT	FE	2			
66+05.20	LT	FE	3			
66+06.55	RT	FE	3			
76+86.89	RT	FE	4			
77+78.03	LT	FE	3			
82+34.69	LT	FE	2			
91+40.30	RT	FE	3			
95+41.81	RT	PE		21		6
102+24.51	LT	FE	3			
104+54.42	LT	PE		24		6
107+71.93	RT	FE	2			
109+43.39	LT	PE		16		4

ENTRANCES						
LOCATION			AGGREGATE SURFACE COURSE, TYPE B	BITUMINOUS MATERIALS (TACK COAT)	HOT-MIX ASPHALT SURFACE COURSE, IL-9.5, MIX "C", N50	INCIDENTAL HOT-MIX ASPHALT SURFACING
			40200800	40600290	40604050	40800050
Station	Side	Type	TON	POUND	TON	TON
COUNTY HIGHWAY 15						
120+82.94	LT	PE		12		3
120+86.30	RT	ROAD		66	15	
126+32.55	RT	FE	2			
132+25.69	RT	PE		14		4
133+64.15	LT	FE	3			
136+04.69	RT	PE		18		5
199+80.35	LT	FE	3			
200+01.20	RT	FE	3			
204+76.78	RT	FE	3			
209+29.53	RT	PE		18		5
210+22.62	LT	FE	3			
218+59.50	LT	PE		20		5
220+85.84	RT	FE	3			
224+48.21	LT	FE	3			
229+89.25	LT	FE	3			
235+38.70	RT	FE	3			
244+82.32	RT	FE	3			
252+88.40	LT	FE	3			
252+88.91	RT	PE		16		4
262+98.42	RT	FE	5			
271+01.20	RT	PE		27		7
276+59.74	LT	FE	3			
280+87.21	LT	PE		14		4
285+47.78	LT	PE		15		4
287+52.57	RT	PE		16		4
292+51.41	LT	FE	3			
293+04.14	RT	FE	3			
316+70.37	RT	CE		27		7
318+13.53	RT	CE		16		4
318+39.33	LT	PE		18		5
318+86.76	LT	PE		17		
319+66.20	LT	ROAD		160	35	
TOTAL			88	959	80	155

MODEL: schedule sheet 2
 FILE NAME: V:\5220 - CH 15 Resurfacing - Logan Co\CD\CD\CD Sheets\1502-05-hch-schedule.dgn

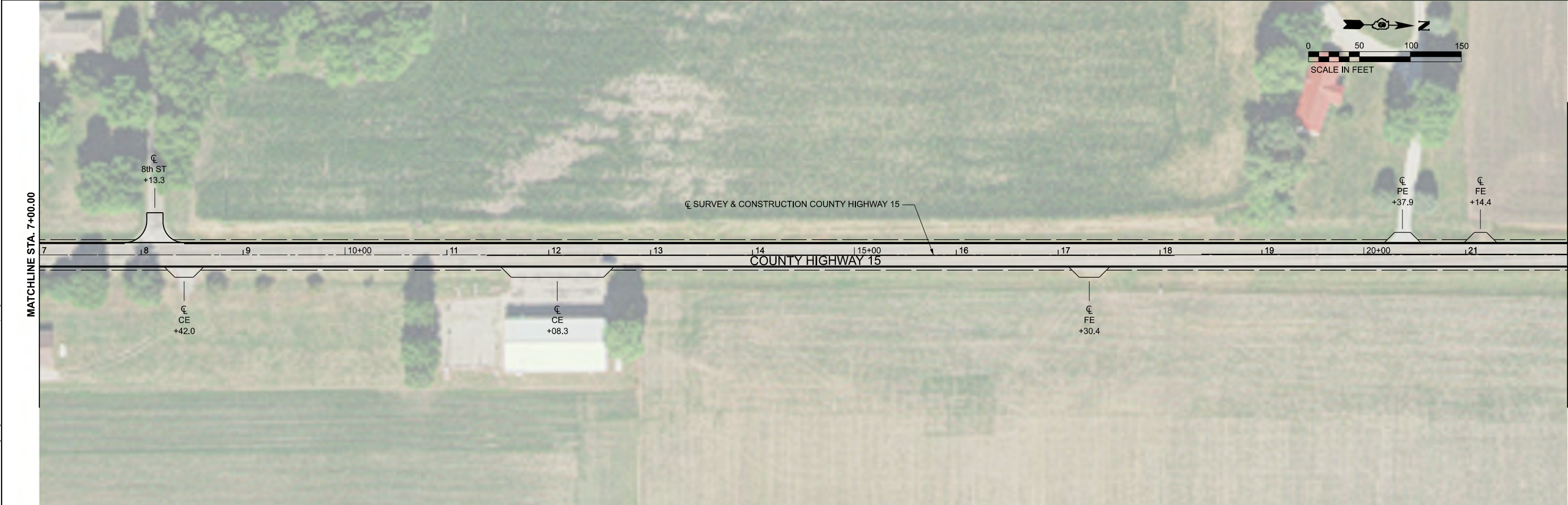
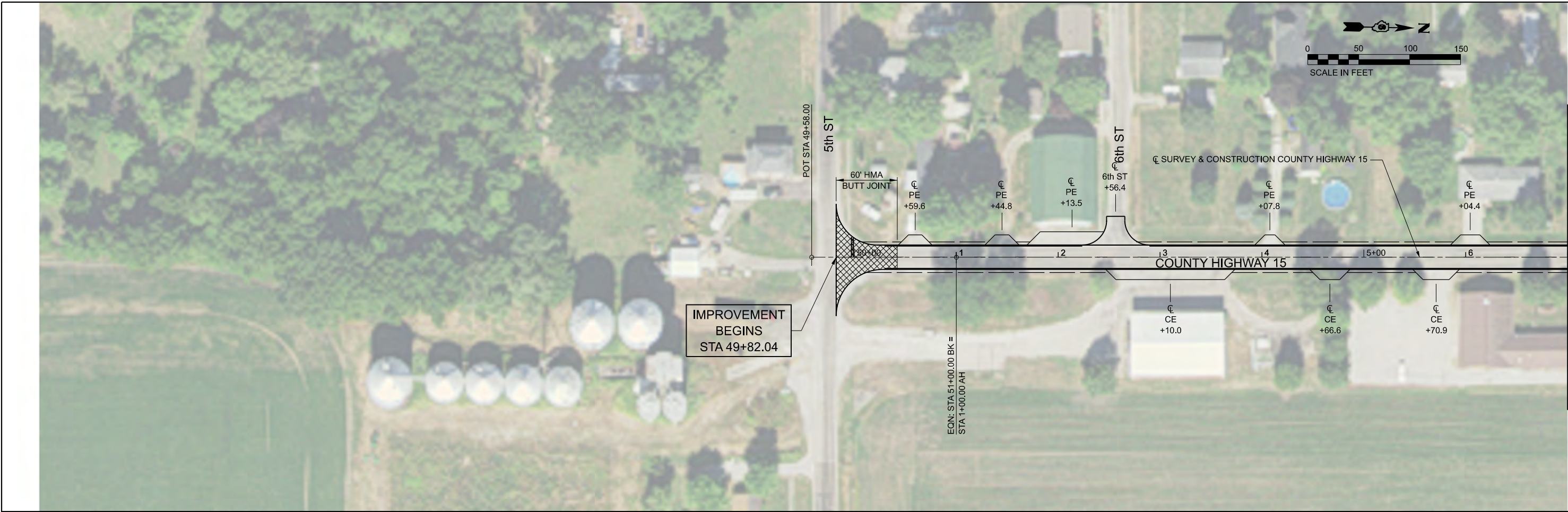


USER NAME = BDeCrane	DESIGNED -	REVISED -
	DRAWN -	REVISED -
PLOT SCALE = 0.16666633' / in.	CHECKED -	REVISED -
PLOT DATE = 11/20/2023	DATE -	REVISED -

**LOGAN COUNTY
HIGHWAY DEPARTMENT**

COUNTY HIGHWAY 15 SCHEDULE OF QUANTITIES			
SCALE: N/A	SHEET 2	OF 2 SHEETS	STA. N/A TO STA. N/A

F.A.S. RTE.	SECTION	COUNTY	TOTAL SHEETS	SHEET NO.
565	16-00034-03-R5	LOGAN	22	7
CONTRACT NO. 93814				
ILLINOIS FED. AID PROJECT				



MODEL: E:\CL4 - Pkg 1 (Sheet)
 FILE NAME: V:\S220 - CH 15 Resurficing - Logan Co\CL4\CL4000 Sheets\1502\ch15cldm.dgn



USER NAME = BDeCraene
 PLOT SCALE = 0.16666633''/in.
 PLOT DATE = 11/20/2023

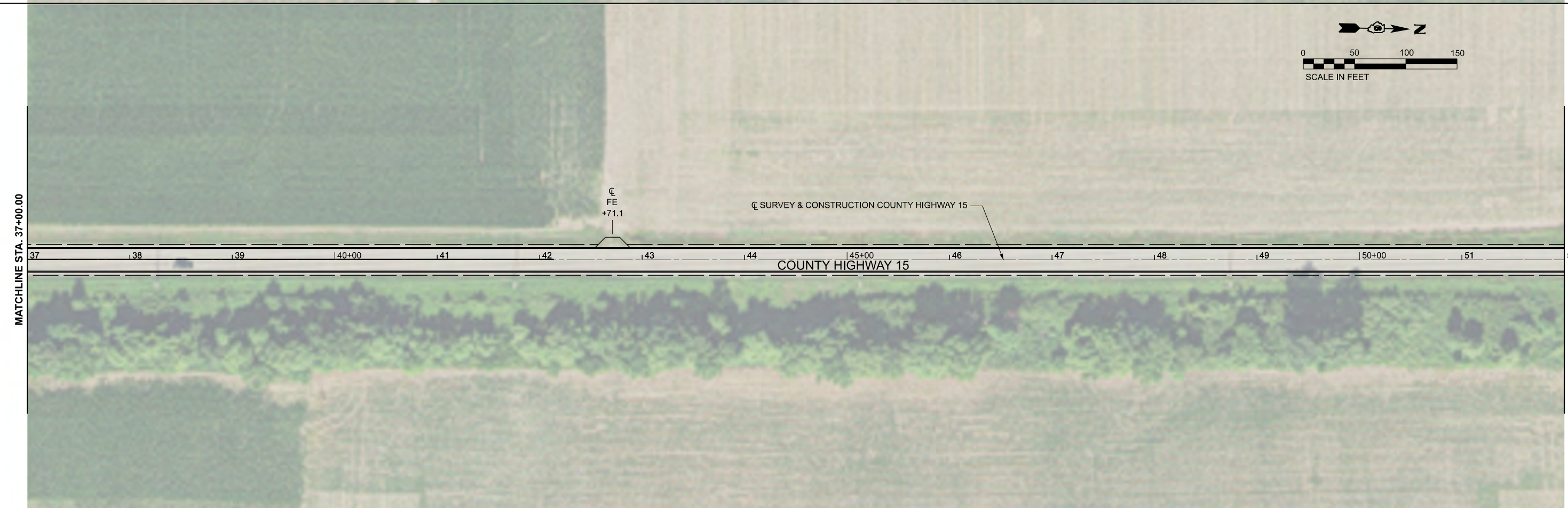
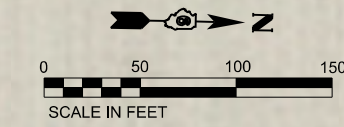
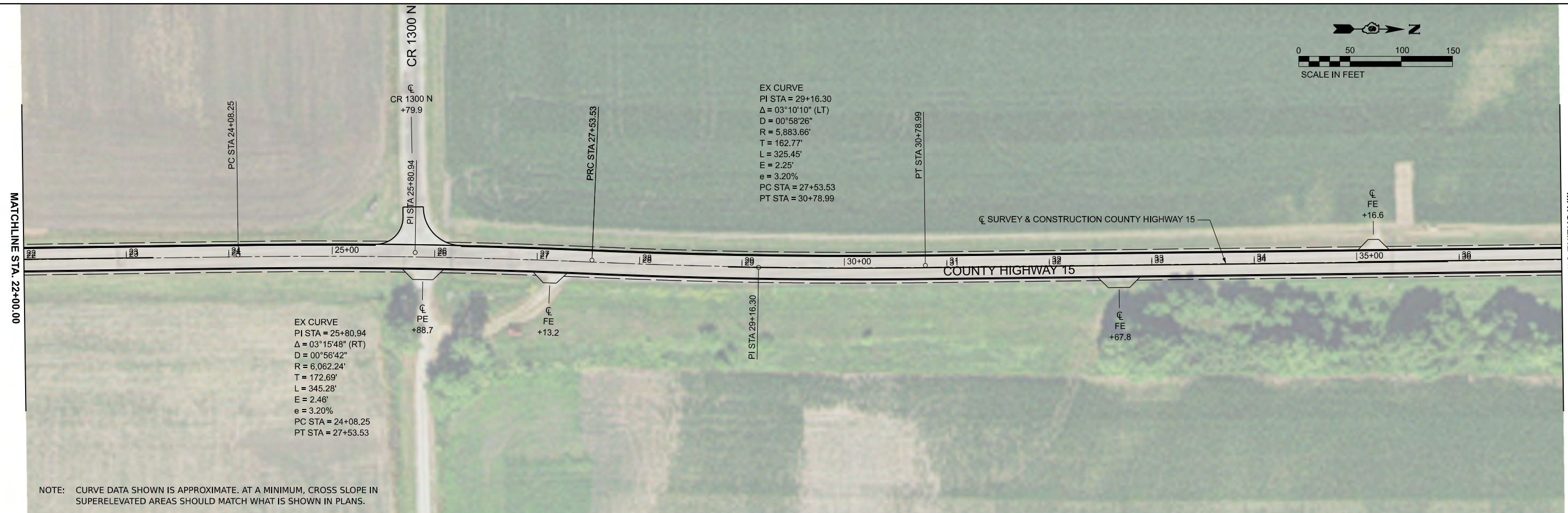
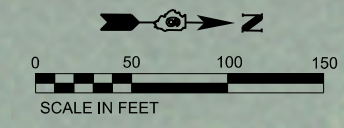
DESIGNED -	REVISED -
DRAWN -	REVISED -
CHECKED -	REVISED -
DATE -	REVISED -

**LOGAN COUNTY
HIGHWAY DEPARTMENT**

**COUNTY HIGHWAY 15
PLAN**

SCALE: 1"=50' SHEET 1 OF 12 SHEETS STA. 49+58.00 TO STA. 22+00.00 R2

F.A.S. RTE.	SECTION	COUNTY	TOTAL SHEETS	SHEET NO.
565	16-00034-03-R5	LOGAN	22	8
CONTRACT NO. 93814				
ILLINOIS FED. AID PROJECT				



MODEL: E:\CL\4 - Plan 3 (Sheet)
 FILE NAME: V:\5220 - CH 15 Resurficing - Logan Co\CL\4\CL\4\Sheet1502\Sheet15.dgn



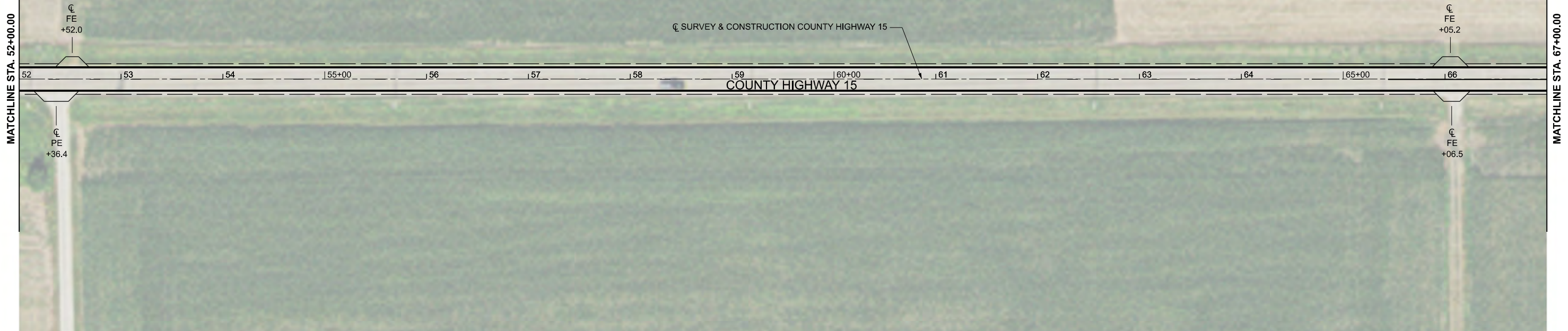
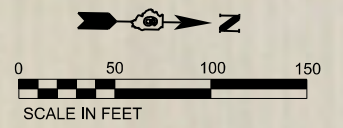
USER NAME = BDeCraene	DESIGNED -	REVISED -
PLOT SCALE = 0.16666633' / in.	DRAWN -	REVISED -
PLOT DATE = 11/20/2023	CHECKED -	REVISED -
	DATE -	REVISED -

**LOGAN COUNTY
HIGHWAY DEPARTMENT**

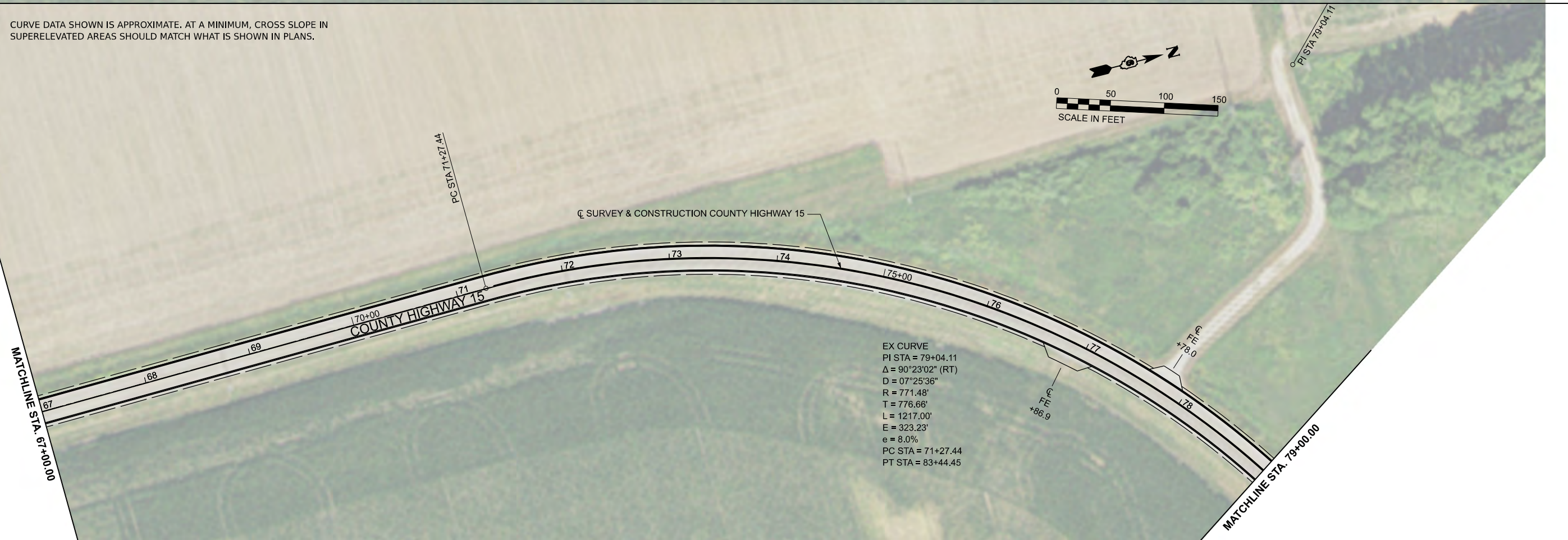
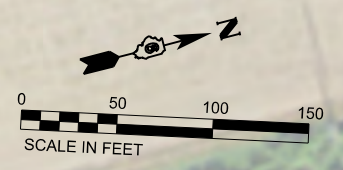
**COUNTY HIGHWAY 15
PLAN**

SCALE: 1"=50' SHEET 2 OF 12 SHEETS STA. 22+00.00 R2 TO STA. 52+00.00 R2

F.A.S. RTE.	SECTION	COUNTY	TOTAL SHEETS	SHEET NO.
565	16-00034-03-R5	LOGAN	22	9
CONTRACT NO. 93814				
ILLINOIS FED. AID PROJECT				

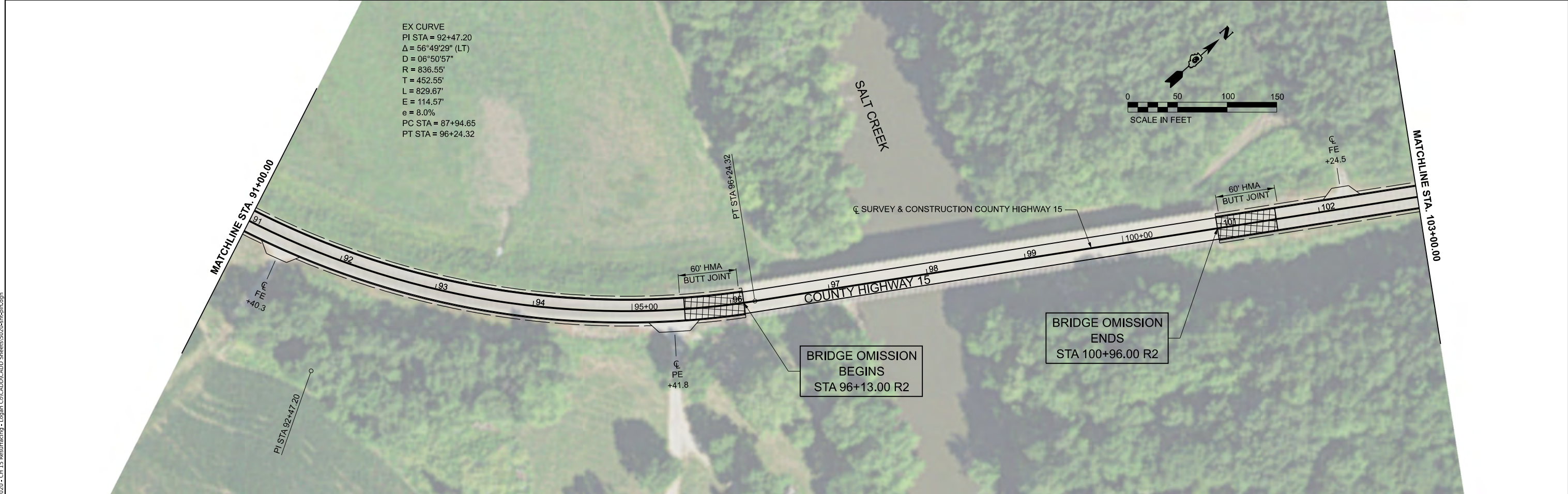
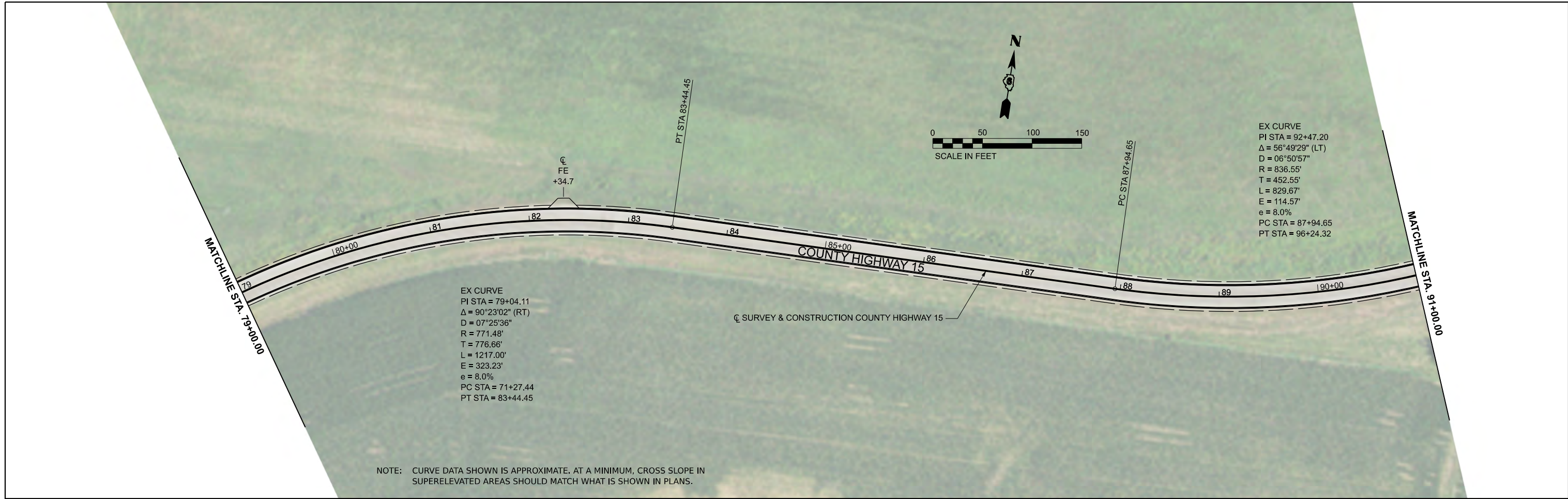


NOTE: CURVE DATA SHOWN IS APPROXIMATE. AT A MINIMUM, CROSS SLOPE IN SUPERELEVATED AREAS SHOULD MATCH WHAT IS SHOWN IN PLANS.



MODEL: E:\CL14 - Rte 5 (Sheet) FILE NAME: V:\5220 - CH 15 Resurficing - Logan Co\ICADD\ICADD_Sheets\5220-CH15.dgn

	USER NAME = BDeCrane	DESIGNED -	REVISED -	LOGAN COUNTY HIGHWAY DEPARTMENT	COUNTY HIGHWAY 15 PLAN			F.A.S. RTE. = 565	SECTION = 16-00034-03-R5	COUNTY = LOGAN	TOTAL SHEETS = 22	SHEET NO. = 10
	PLOT SCALE = 0.16666633' / in.	CHECKED -	REVISED -		SCALE: 1"=50'	SHEET 3	OF 12 SHEETS	STA. 52+00.00 R2	TO STA. 79+00.00 R2	CONTRACT NO. 93814		
	PLOT DATE = 11/20/2023	DATE -	REVISED -		ILLINOIS FED. AID PROJECT							



MODEL: E:\CL\A - Plan 7 (Sheet)
 FILE NAME: V:\S220 - CH 15 Resurficing - Logan Co\ICADD\CADD Sheets\1502\05-hch10.dgn



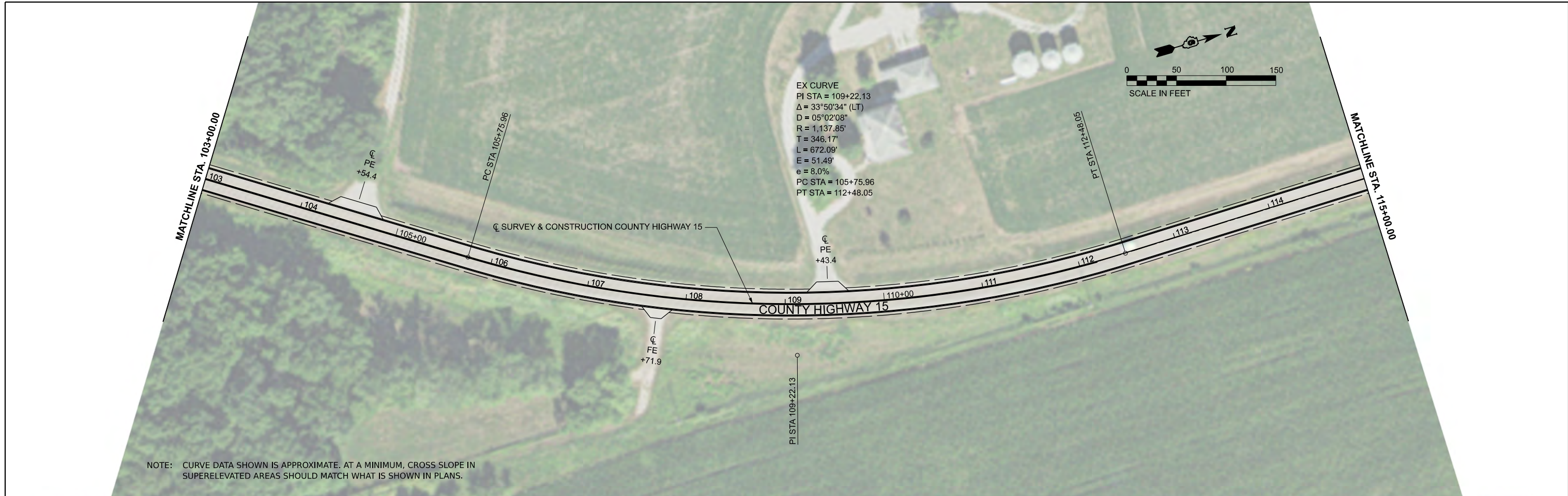
USER NAME = BDeCrane	DESIGNED -	REVISED -
PLOT SCALE = 0.16666633' / in.	DRAWN -	REVISED -
PLOT DATE = 11/20/2023	CHECKED -	REVISED -
	DATE -	REVISED -

**LOGAN COUNTY
HIGHWAY DEPARTMENT**

**COUNTY HIGHWAY 15
PLAN**

SCALE: 1"=50' SHEET 4 OF 12 SHEETS STA. 79+00.00 R2 TO STA. 103+00.00 R2

F.A.S. RTE.	SECTION	COUNTY	TOTAL SHEETS	SHEET NO.
565	16-00034-03-R5	LOGAN	22	11
CONTRACT NO. 93814				
ILLINOIS FED. AID PROJECT				



MODEL: E:\CL14 - Pkg 9 (Sheet) - Logan Co\ICADD\CADD_Sheets\1502\05\ch15.dgn
 FILE NAME: V:\S220 - CH 15 Resurficing - Logan Co\ICADD\CADD_Sheets\1502\05\ch15.dgn



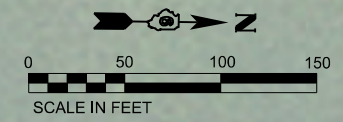
USER NAME = BDeCraene	DESIGNED -	REVISED -
PLOT SCALE = 0.16666633' / in.	DRAWN -	REVISED -
PLOT DATE = 11/20/2023	CHECKED -	REVISED -
	DATE -	REVISED -

**LOGAN COUNTY
HIGHWAY DEPARTMENT**

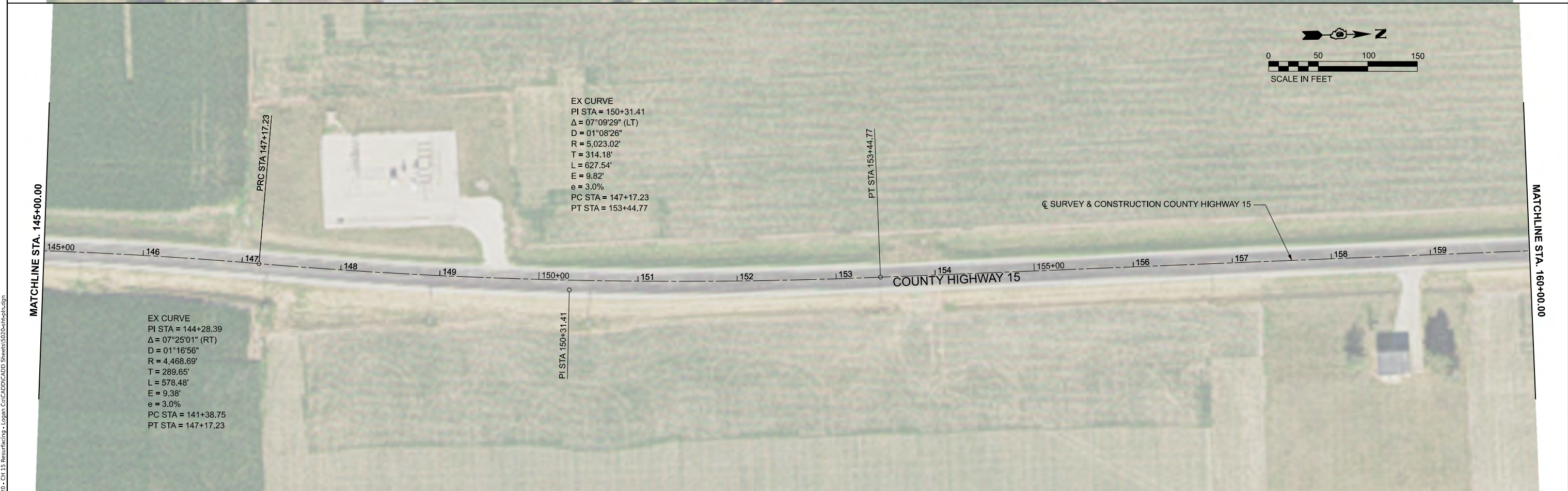
**COUNTY HIGHWAY 15
PLAN**

SCALE: 1"=50' SHEET 5 OF 12 SHEETS STA. 103+00.00 R2 TO STA. 130+00.00 R2

F.A.S. RTE.	SECTION	COUNTY	TOTAL SHEETS	SHEET NO.
565	16-00034-03-R5	LOGAN	22	12
CONTRACT NO. 93814				
ILLINOIS FED. AID PROJECT				



EX CURVE
 PI STA = 144+28.39
 $\Delta = 07^{\circ}25'01''$ (RT)
 D = $01^{\circ}16'56''$
 R = 4,468.69'
 T = 289.65'
 L = 578.48'
 E = 9.38'
 e = 3.0%
 PC STA = 141+38.75
 PT STA = 147+17.23



EX CURVE
 PI STA = 150+31.41
 $\Delta = 07^{\circ}09'29''$ (LT)
 D = $01^{\circ}08'26''$
 R = 5,023.02'
 T = 314.18'
 L = 627.54'
 E = 9.82'
 e = 3.0%
 PC STA = 147+17.23
 PT STA = 153+44.77

EX CURVE
 PI STA = 144+28.39
 $\Delta = 07^{\circ}25'01''$ (RT)
 D = $01^{\circ}16'56''$
 R = 4,468.69'
 T = 289.65'
 L = 578.48'
 E = 9.38'
 e = 3.0%
 PC STA = 141+38.75
 PT STA = 147+17.23

MODEL: E:\CL4 - Pkg 11 (Sheet) FILE NAME: V:\S220 - CH 15 Resurficing - Logan Co\CL4\CL4000_Sheets\1502\ch15hdn.dgn



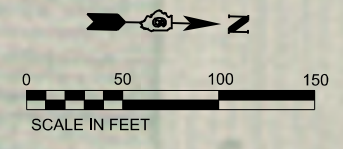
USER NAME = BDeCrane	DESIGNED -	REVISED -
PLOT SCALE = 0.16666633' / in.	DRAWN -	REVISED -
PLOT DATE = 11/20/2023	CHECKED -	REVISED -
	DATE -	REVISED -

**LOGAN COUNTY
HIGHWAY DEPARTMENT**

**COUNTY HIGHWAY 15
PLAN**

SCALE: 1"=50' SHEET 6 OF 12 SHEETS STA. 130+00.00 R2 TO STA. 160+00.00 R2

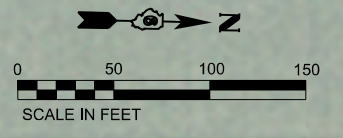
F.A.S. RTE.	SECTION	COUNTY	TOTAL SHEETS	SHEET NO.
565	16-00034-03-R5	LOGAN	22	13
CONTRACT NO. 93814				
ILLINOIS FED. AID PROJECT				



MATCHLINE STA. 160+00.00



MATCHLINE STA. 175+00.00



MATCHLINE STA. 175+00.00



MATCHLINE STA. 190+00.00

MODEL: E:\CL14 - Pkgs 13 (Sheet)
FILE NAME: V355226 - CH 15 Resurfacing - Logan Co\CL14\CADD\Sheet1502\Sheet15.dgn



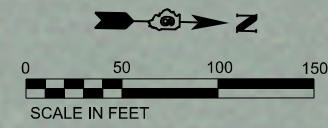
USER NAME = BDeCraene	DESIGNED -	REVISED -
PLOT SCALE = 0.16666633 ' / in.	DRAWN -	REVISED -
PLOT DATE = 11/20/2023	CHECKED -	REVISED -
	DATE -	REVISED -

**LOGAN COUNTY
HIGHWAY DEPARTMENT**

**COUNTY HIGHWAY 15
PLAN**

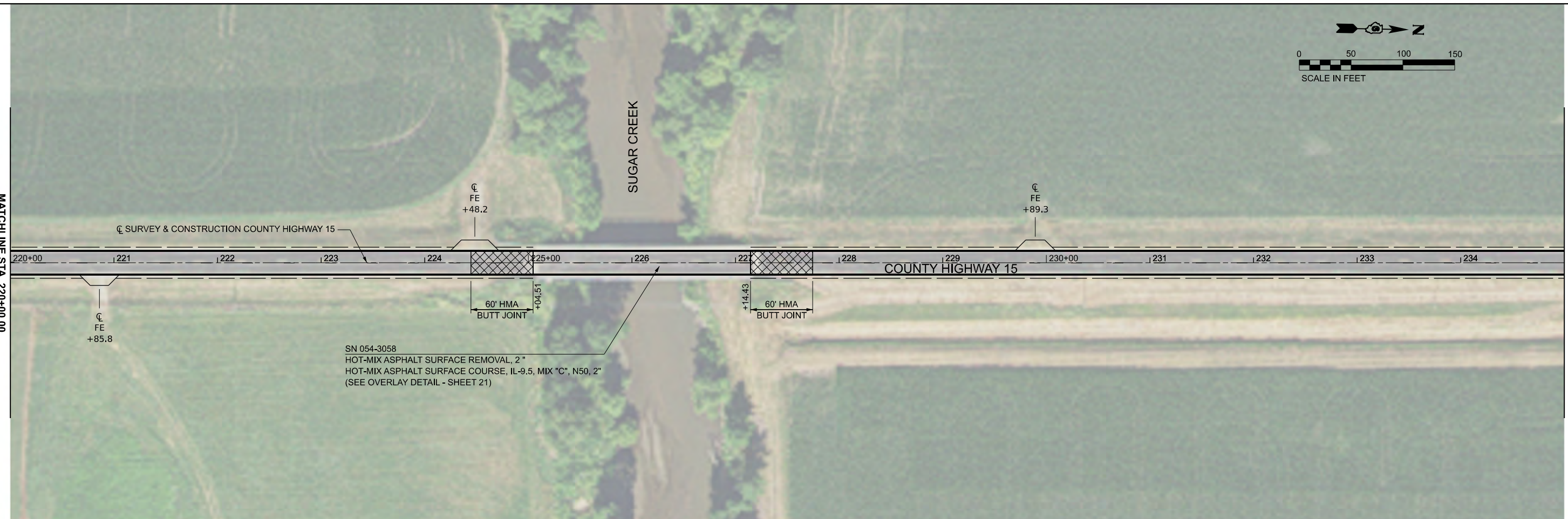
SCALE: 1"=50' SHEET 7 OF 12 SHEETS STA. 160+00.00 R2 TO STA. 190+00.00 R2

F.A.S. RTE.	SECTION	COUNTY	TOTAL SHEETS	SHEET NO.
565	16-00034-03-R5	LOGAN	22	14
CONTRACT NO. 93814				
ILLINOIS FED. AID PROJECT				

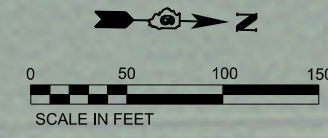


MATCHLINE STA. 220+00.00

MATCHLINE STA. 235+00.00

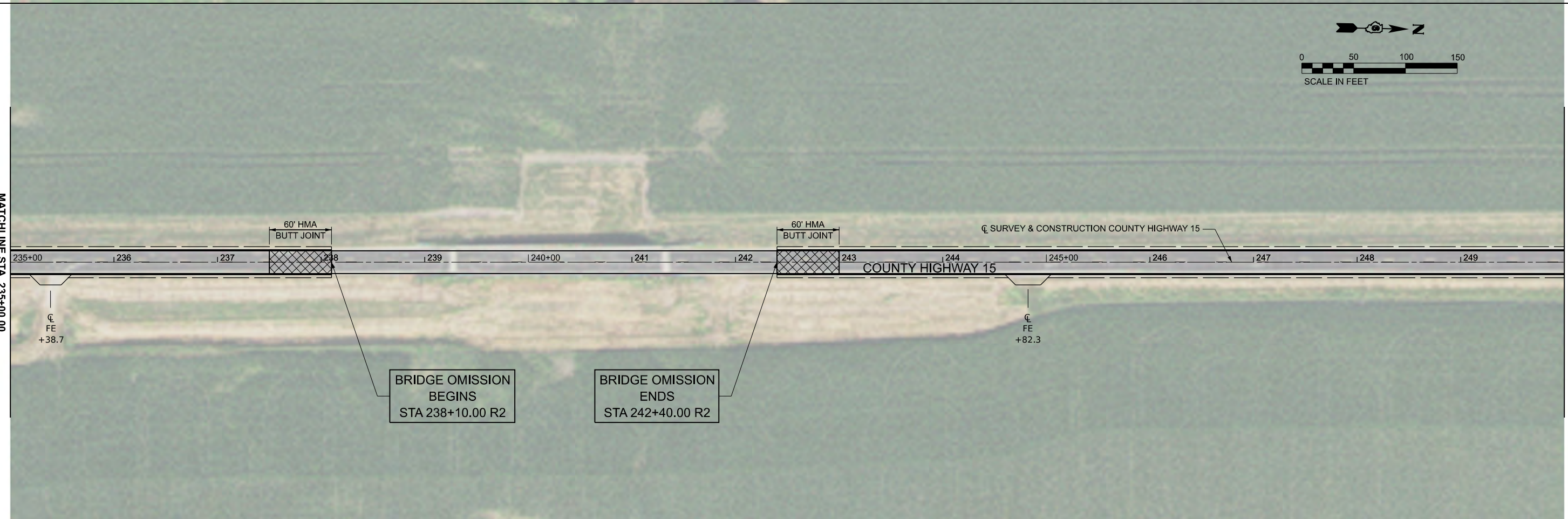


SN 054-3058
HOT-MIX ASPHALT SURFACE REMOVAL, 2"
HOT-MIX ASPHALT SURFACE COURSE, IL-9.5, MIX "C", N50, 2"
(SEE OVERLAY DETAIL - SHEET 21)



MATCHLINE STA. 235+00.00

MATCHLINE STA. 250+00.00



BRIDGE OMISSION
BEGINS
STA 238+10.00 R2

BRIDGE OMISSION
ENDS
STA 242+40.00 R2

MODEL: E:\CL14 - Pkgs 17 (Sheet) FILE NAME: V165220 - CH 15 Resurfacing - Logan Co\ICADD\CADD Sheets\1502\Sheet9.dgn



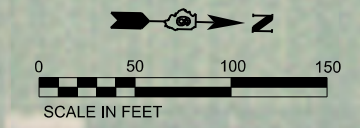
USER NAME = BDeCraene	DESIGNED -	REVISED -
	DRAWN -	REVISED -
PLOT SCALE = 0.16666633' / in.	CHECKED -	REVISED -
PLOT DATE = 11/20/2023	DATE -	REVISED -

**LOGAN COUNTY
HIGHWAY DEPARTMENT**

**COUNTY HIGHWAY 15
PLAN**

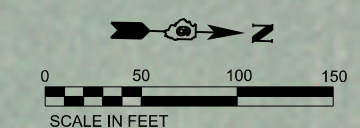
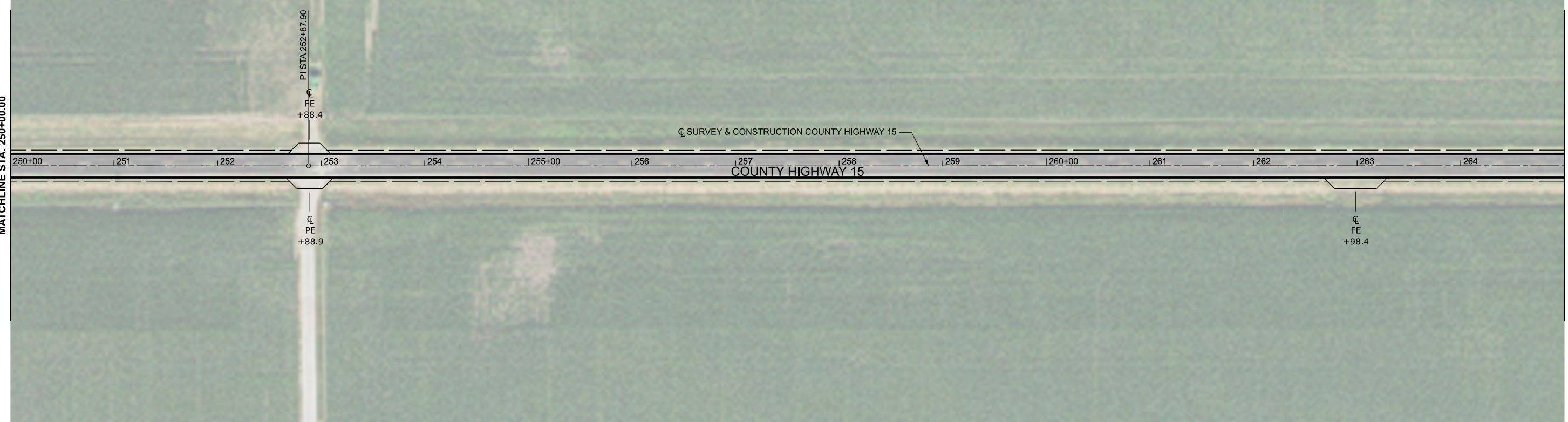
SCALE: 1"=50' SHEET 9 OF 12 SHEETS STA. 220+00.00 R2 TO STA. 250+00.00 R2

F.A.S. RTE. 565	SECTION 16-00034-03-R5	COUNTY LOGAN	TOTAL SHEETS 22	SHEET NO. 16
CONTRACT NO. 93814				
ILLINOIS FED. AID PROJECT				



MATCHLINE STA. 250+00.00

MATCHLINE STA. 265+00.00



MATCHLINE STA. 265+00.00

MATCHLINE STA. 280+00.00



MODEL: E:\CL4 - Pkgs 19 (Sheet) FILE NAME: V165220 - CH 15 Resurfacing - Logan Co\CL4\CL4000_Sheets\1502\0-shc10.dgn



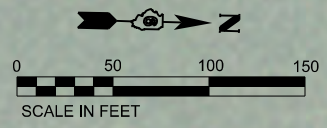
USER NAME = BDeCrane	DESIGNED -	REVISED -
	DRAWN -	REVISED -
PLOT SCALE = 0.16666633' / in.	CHECKED -	REVISED -
PLOT DATE = 11/20/2023	DATE -	REVISED -

**LOGAN COUNTY
HIGHWAY DEPARTMENT**

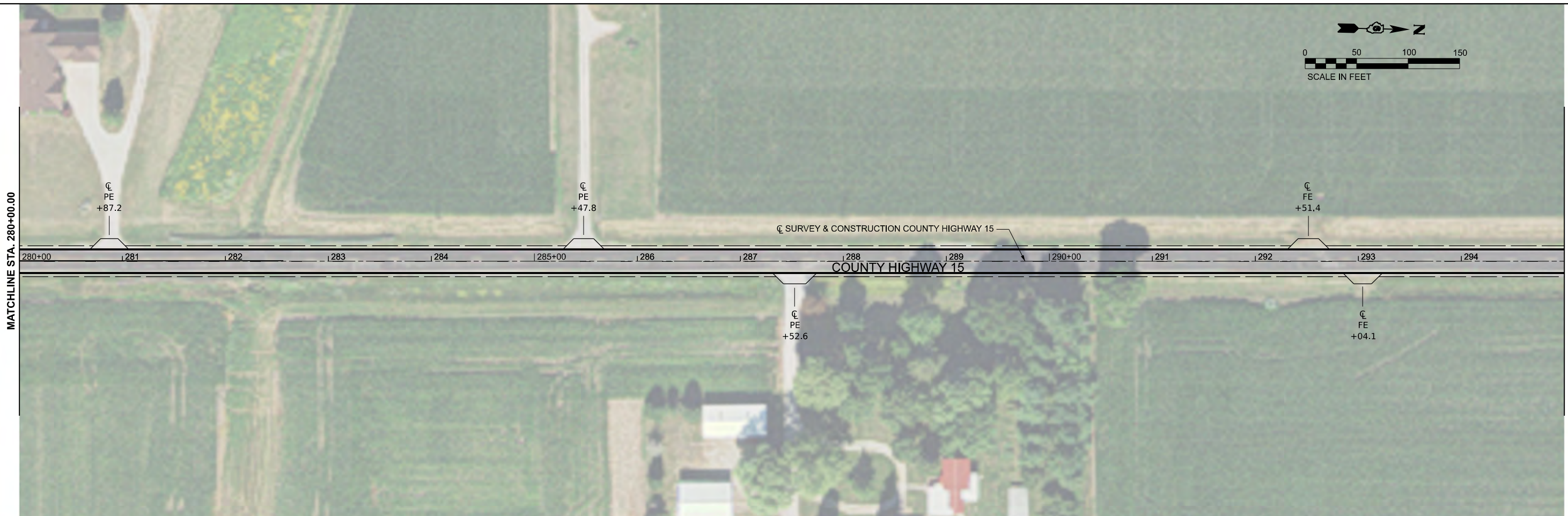
**COUNTY HIGHWAY 15
PLAN**

SCALE: 1"=50' SHEET 10 OF 12 SHEETS STA. 250+00.00 R2 TO STA. 280+00.00 R2

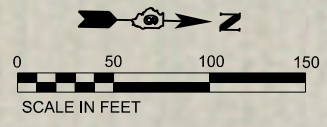
F.A.S. RTE.	SECTION	COUNTY	TOTAL SHEETS	SHEET NO.
565	16-00034-03-R5	LOGAN	22	17
CONTRACT NO. 93814				
ILLINOIS FED. AID PROJECT				



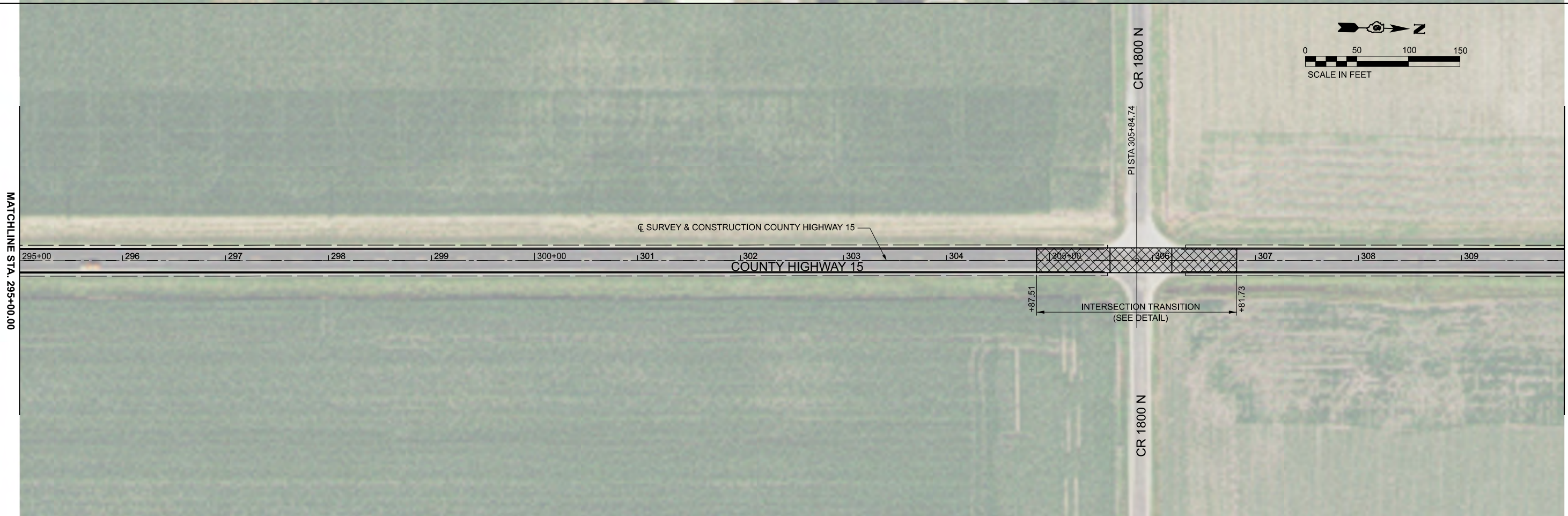
MATCHLINE STA. 280+00.00



MATCHLINE STA. 295+00.00



MATCHLINE STA. 295+00.00



MATCHLINE STA. 310+00.00

MODEL: E:\CL14 - Rte 21 (Sheet) FILE NAME: V165220 - CH 15 Resurfacing - Logan Co\CL14\CL14\000 Sheets\1502\Sheet11.dgn



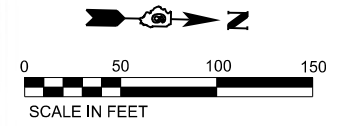
USER NAME = BDeCraene	DESIGNED -	REVISED -
PLOT SCALE = 0.16666633' / in.	DRAWN -	REVISED -
PLOT DATE = 11/20/2023	CHECKED -	REVISED -
	DATE -	REVISED -

**LOGAN COUNTY
HIGHWAY DEPARTMENT**

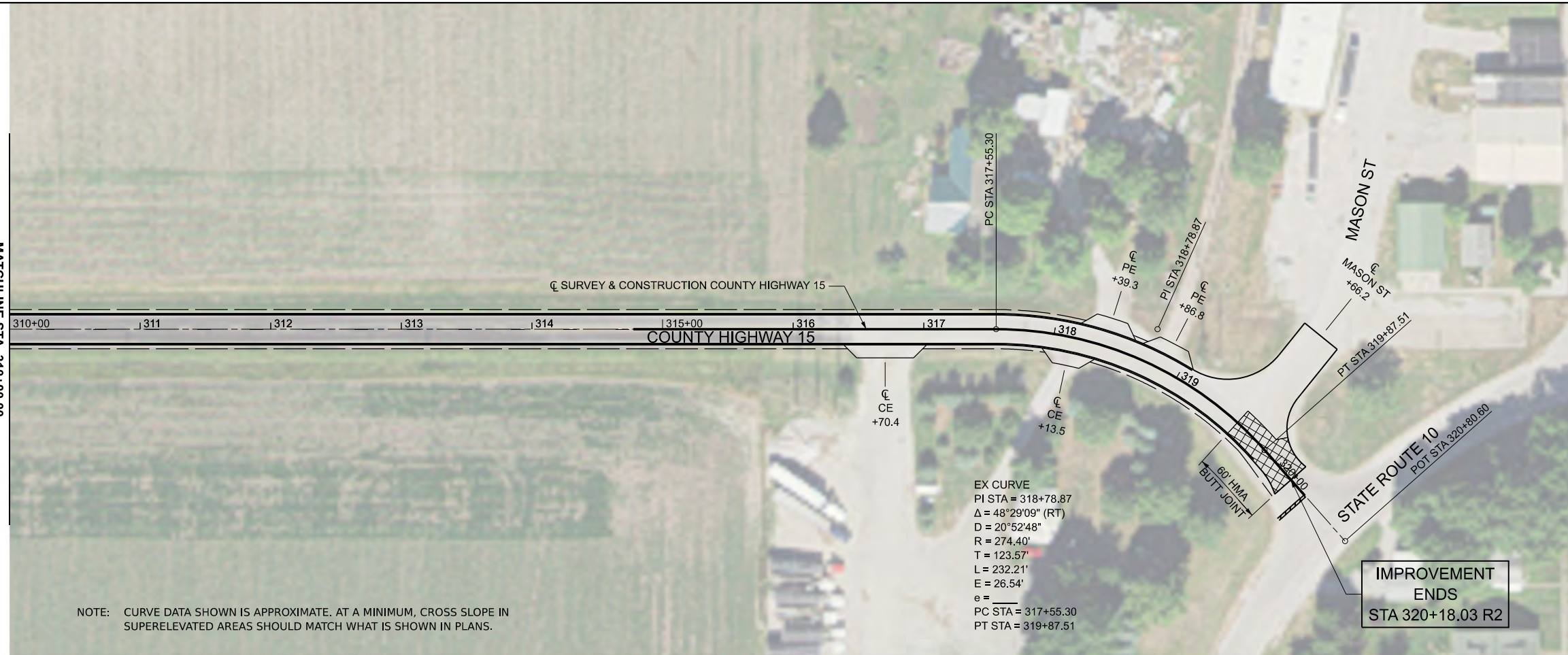
**COUNTY HIGHWAY 15
PLAN**

SCALE: 1"=50' SHEET 11 OF 12 SHEETS STA. 280+00.00 R2 TO STA. 310+00.00 R2

F.A.S. RTE.	SECTION	COUNTY	TOTAL SHEETS	SHEET NO.
565	16-00034-03-R5	LOGAN	22	18
CONTRACT NO. 93814				
ILLINOIS FED. AID PROJECT				



MATCHLINE STA. 310+00.00



NOTE: CURVE DATA SHOWN IS APPROXIMATE. AT A MINIMUM, CROSS SLOPE IN SUPERELEVATED AREAS SHOULD MATCH WHAT IS SHOWN IN PLANS.

MODEL: E:\CL14 - Plan 23 (Sheet)
 FILE NAME: V163226 - CH 15 Resurfacing - Logan Co\CL14\CADD\Sheet15023-CH15.dgn



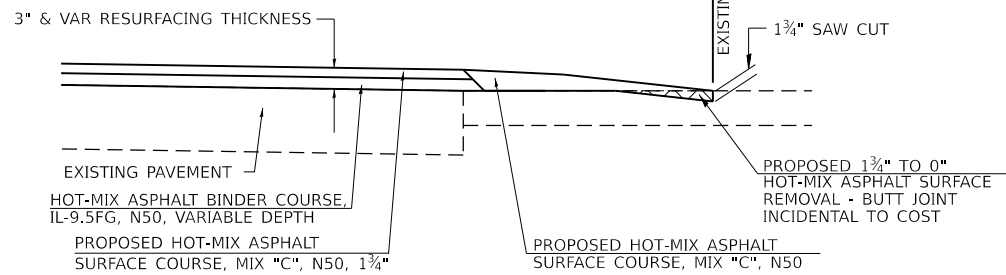
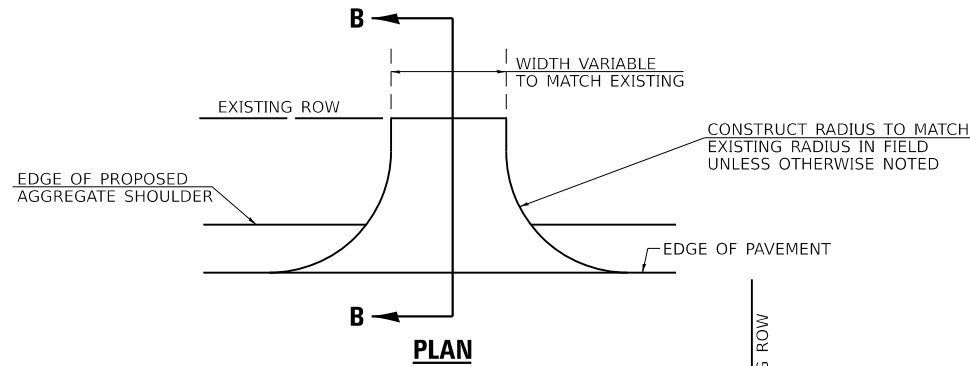
USER NAME = BDeCraene	DESIGNED -	REVISED -
	DRAWN -	REVISED -
PLOT SCALE = 0.16666633''/in.	CHECKED -	REVISED -
PLOT DATE = 11/20/2023	DATE -	REVISED -

**LOGAN COUNTY
HIGHWAY DEPARTMENT**

**COUNTY HIGHWAY 15
PLAN**

SCALE: 1"=50' SHEET 12 OF 12 SHEETS STA. 310+00.00 R2 TO STA. 325+00.00 R2

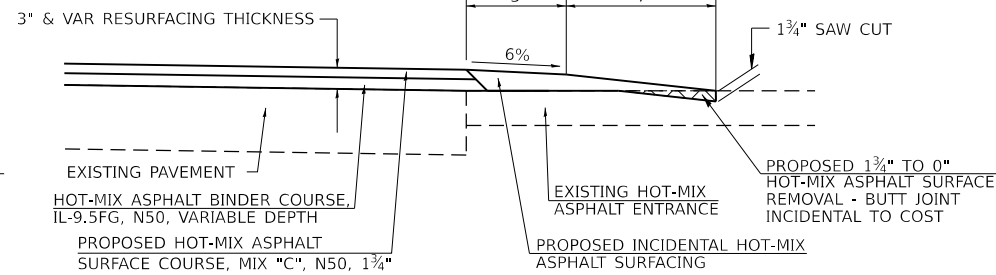
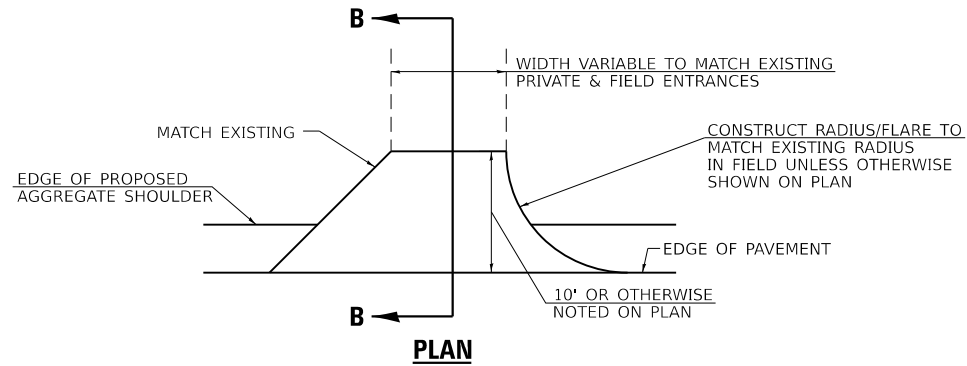
F.A.S. RTE.	SECTION	COUNTY	TOTAL SHEETS	SHEET NO.
565	16-00034-03-R5	LOGAN	22	19
CONTRACT NO. 93814				
ILLINOIS FED. AID PROJECT				



SECTION B-B

HOT MIX-ASPHALT SIDE ROAD TAPERS

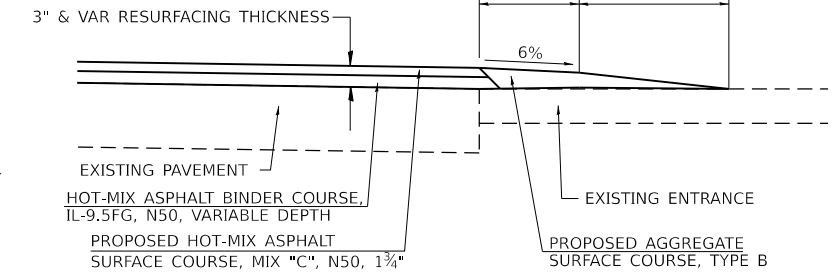
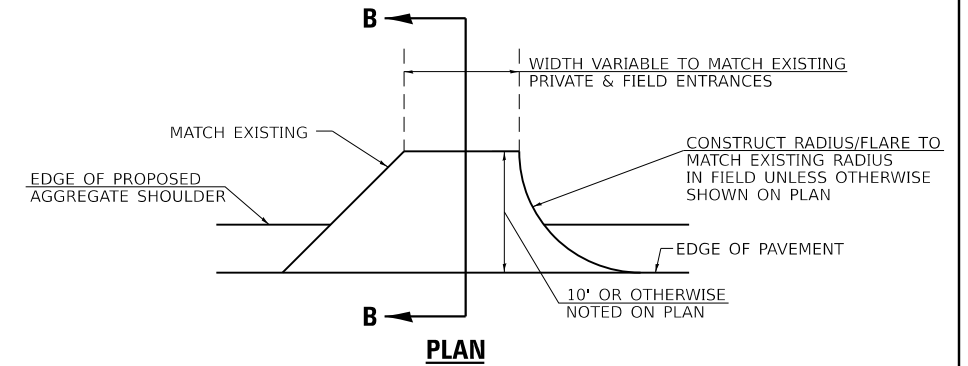
STATION	SIDE	NAME
CH 15		
2+56	LT	6TH ST
8+13	LT	8TH ST
25+80	LT	CR 1300 N
120+86	RT	1450TH ST
319+66	LT	MASON ST



SECTION B-B

HOT MIX-ASPHALT ENTRANCE TAPERS

STATION	SIDE	TYPE
CH 15		
50+60	LT	PE
51+00 = 1+00		
1+45	LT	PE
2+14	LT	PE
3+10	RT	CE
4+08	LT	PE
4+67	RT	CE
5+71	RT	CE
6+04	LT	PE
8+42	RT	CE
12+08	RT	CE
20+38	LT	PE
25+89	RT	PE
52+36	RT	PE
95+42	RT	PE
104+54	LT	PE
109+43	LT	PE
120+83	LT	PE
132+26	RT	PE
136+05	RT	PE
209+30	RT	PE
218+60	LT	PE
252+89	RT	PE
271+01	RT	PE
280+87	LT	PE
285+48	LT	PE
287+53	RT	PE
316+70	RT	CE
318+14	RT	CE
318+39	LT	PE
318+87	LT	PE



SECTION B-B

AGGREGATE ENTRANCE TAPERS

STATION	SIDE	TYPE
CH 15		
17+30	RT	FE
21+14	LT	FE
27+13	RT	FE
32+68	RT	FE
35+17	LT	FE
42+71	LT	FE
52+52	LT	FE
66+05	LT	FE
66+07	RT	FE
76+87	RT	FE
77+78	LT	FE
82+35	LT	FE
91+40	RT	FE
102+25	LT	FE
107+72	RT	FE
126+33	RT	FE
133+64	LT	FE
199+80	LT	FE
200+01	RT	FE
204+77	RT	FE
210+23	LT	FE
220+86	RT	FE
224+48	LT	FE
229+89	LT	FE
235+39	RT	FE
244+82	RT	FE
252+88	LT	FE
262+98	RT	FE
276+60	LT	FE
292+51	LT	FE
293+04	RT	FE

MODEL: d:\ch15\ch15.dwg
FILE NAME: V:\5220 - CH 15 Resurfacing - Logan Co\CH15\CH15.dwg



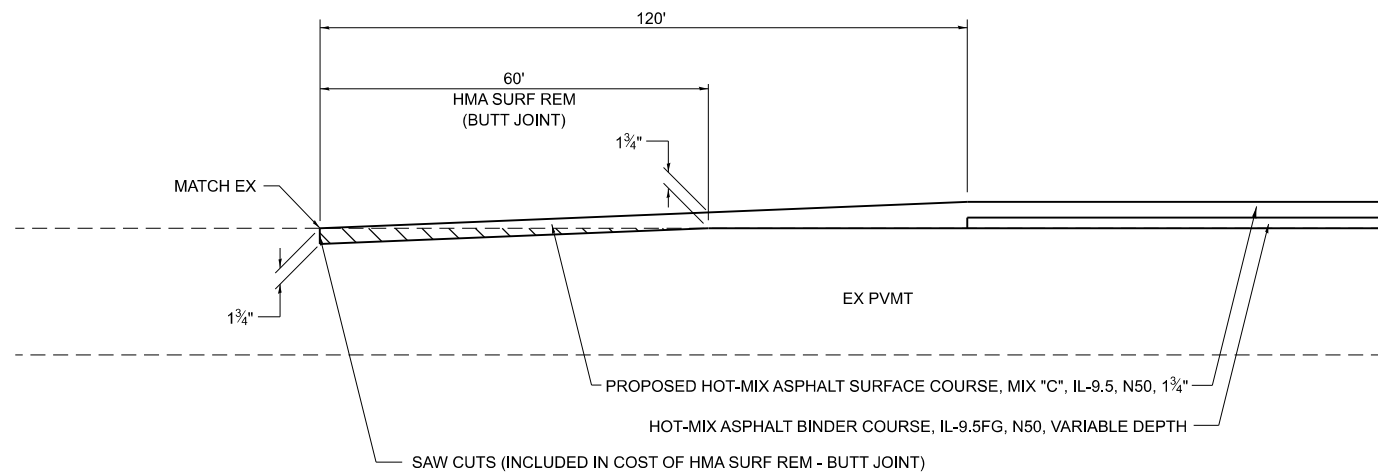
USER NAME = BDeCraene	DESIGNED -	REVISED -
PLOT SCALE = 0.16666633' / in.	DRAWN -	REVISED -
PLOT DATE = 11/20/2023	CHECKED -	REVISED -
	DATE -	REVISED -

**LOGAN COUNTY
HIGHWAY DEPARTMENT**

**COUNTY HIGHWAY 15
ENTRANCE AND SIDE ROAD DETAILS**

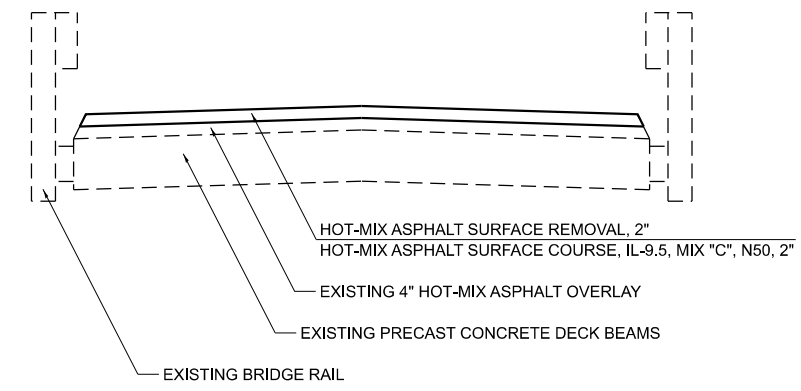
SCALE: N/A SHEET 1 OF 3 SHEETS STA. N/A TO STA. N/A

F.A.S. RTE.	SECTION	COUNTY	TOTAL SHEETS	SHEET NO.
565	16-00034-03-R5	LOGAN	22	20
CONTRACT NO. 93814				
ILLINOIS FED. AID PROJECT				



PAVEMENT TRANSITION DETAIL

- STA 49+82 TO STA 51+00
- (STA EQ 51+00 R1 BK = STA 1+00 R2 AH)
- STA 1+00 TO STA 1+02
- STA 94+93 TO STA 96+13
- STA 100+96 TO STA 102+16
- STA 140+67 TO STA 141+87
- STA 190+64 TO STA 191+84
- STA 223+85 TO STA 225+05
- STA 227+14 TO STA 228+34
- STA 236+90 TO STA 238+10
- STA 242+40 TO STA 243+60
- STA 319+29 TO STA 320+18



SN 054-3058 OVERLAY DETAIL

STA 225+04.51 TO STA 227+14.43
 NOTE: DO NOT REPLACE THE WATERPROOFING MEMBRANE

MODEL: d:\h1\sheet2
 FILE NAME: Y35220 - CH 15 Resurfacing - Logan Co\ICADD\CADD Sheets\50220-sh-deta1b.sdp



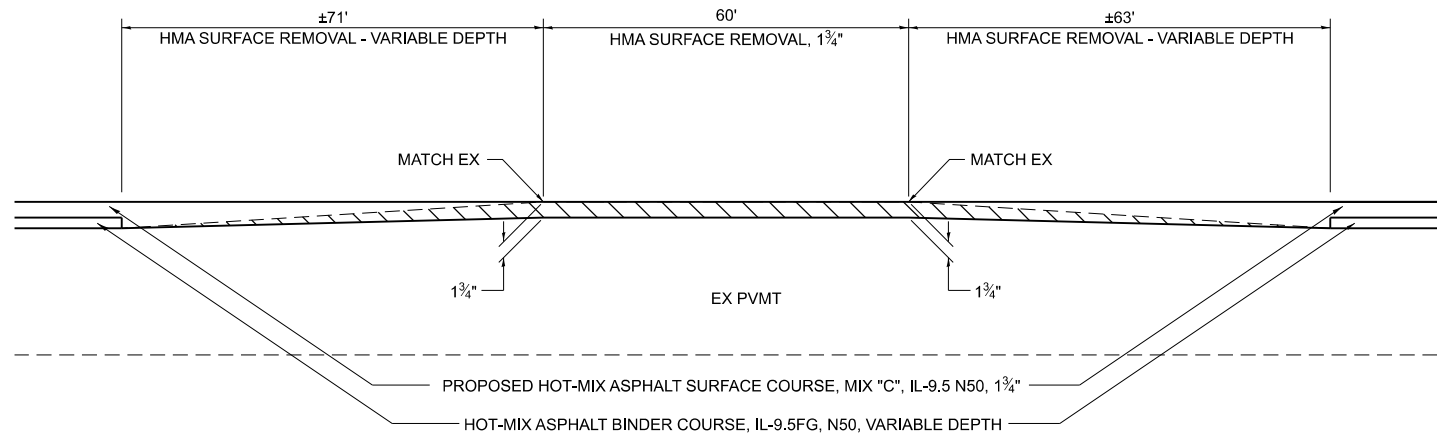
USER NAME = BDeCraene	DESIGNED -	REVISED -
	DRAWN -	REVISED -
PLOT SCALE = 0.16666633' / in.	CHECKED -	REVISED -
PLOT DATE = 11/27/2023	DATE -	REVISED -

**LOGAN COUNTY
HIGHWAY DEPARTMENT**

**COUNTY HIGHWAY 15
SPECIAL DETAILS**

SCALE: N/A SHEET 2 OF 3 SHEETS STA. N/A TO STA. N/A

F.A.S. RTE.	SECTION	COUNTY	TOTAL SHEETS	SHEET NO.
565	16-00034-03-R5	LOGAN	22	21
CONTRACT NO. 93814				
ILLINOIS FED. AID PROJECT				



INTERSECTION TRANSITION DETAIL

STA 304+88 TO STA 306+82

MODEL: d:\h11\sheet3
 FILE NAME: Y151220 - CH 15 Resurfacing - Logan Co\ICADD\CADD Sheets\1502\ch-detail3.dgn



USER NAME = BDeCraene	DESIGNED -	REVISED -
	DRAWN -	REVISED -
PLOT SCALE = 0.16666633' / in.	CHECKED -	REVISED -
PLOT DATE = 11/27/2023	DATE -	REVISED -

**LOGAN COUNTY
HIGHWAY DEPARTMENT**

**COUNTY HIGHWAY 15
SPECIAL DETAILS**

SCALE: N/A SHEET 3 OF 3 SHEETS STA. N/A TO STA. N/A

F.A.S. RTE.	SECTION	COUNTY	TOTAL SHEETS	SHEET NO.
565	16-00034-03-R5	LOGAN	22	22
CONTRACT NO. 93814				
ILLINOIS FED. AID PROJECT				