

F.A. RTE.	SECTION	COUNTY	TOTAL SHEETS	SHEET NO.
		COOK	17	1

STATE OF ILLINOIS
 DEPARTMENT OF TRANSPORTATION
 DIVISION OF HIGHWAYS
**IDOT /IHPA STATEWIDE
 PULLMAN STATE HISTORICAL SITE**

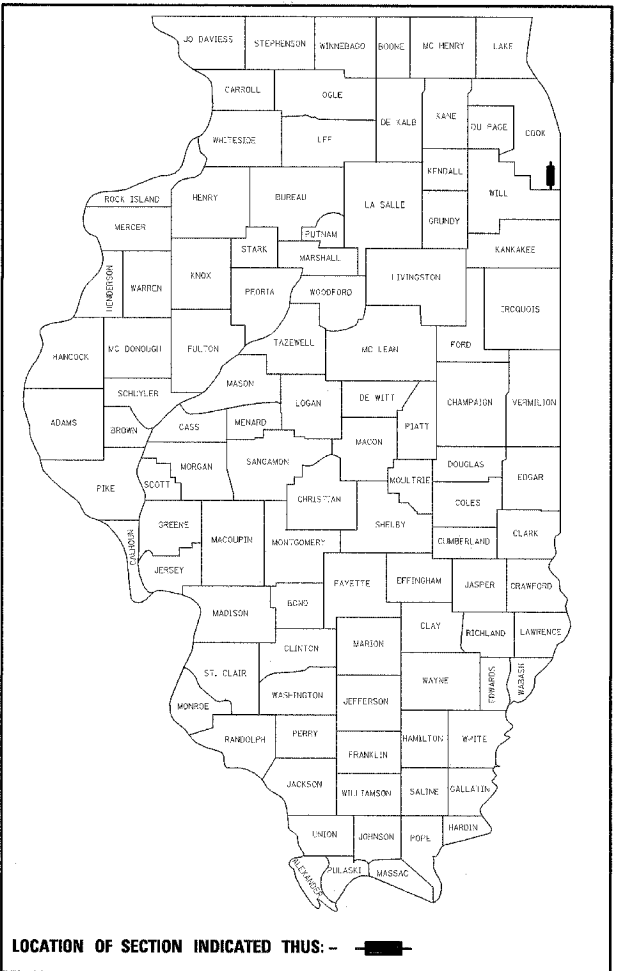
**PARK ROAD AND PATHWAY IMPROVEMENTS 2006
 COOK COUNTY
 JOB NO. C-30-012-06
 SECTION: PULLMAN HISTORIC SITE**

INDEX OF SHEETS

- 1 COVER SHEET
- 2 TYPICAL SECTIONS, GATE DETAILS & LEGEND
- 3 SURVEY TIES, BENCHMARKS & GENERAL NOTES
- 4-5 SUMMARY AND SCHEDULE OF QUANTITIES
- 6 REMOVAL PLAN
- 7-8 PROPOSED PLAN
- 9-10 PROPOSED STAKING LAYOUT PLAN
- 11 PROPOSED WATER MAIN PLAN
- 12 LAWN PLANTING PLAN
- 13-14 LANDSCAPING PLANS
- 15 LANDSCAPING DETAILS
- 16-17 LANDSCAPING NOTES

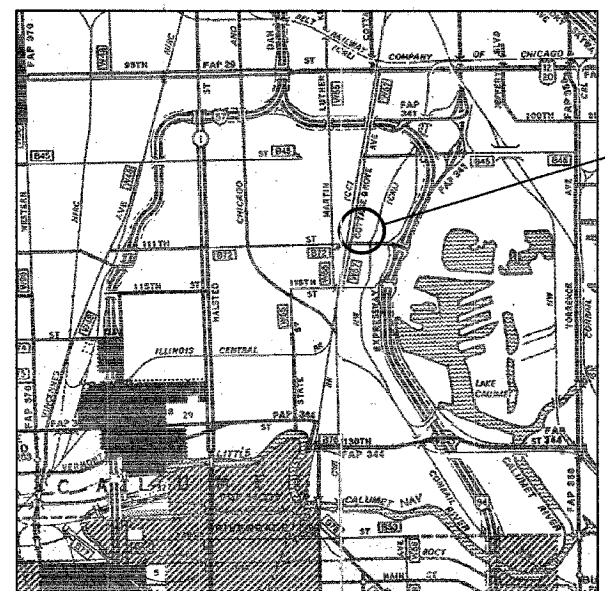
STATE STANDARDS

- 000001-04
- 280001-02
- 424001-04
- 701606-04
- 701801-03
- 702001-06



PROJECT ENGINEER: LANCE KIDD (217) 785-2933

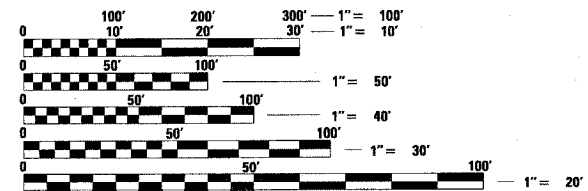
R. 14 E.



PULLMAN STATE HISTORICAL SITE

T. 37 N.

LOCATION MAP



FULL SIZE PLANS HAVE BEEN PREPARED USING STANDARD ENGINEERING SCALES. REDUCED SIZED PLANS WILL NOT CONFORM TO STANDARD SCALES. IN MAKING MEASUREMENTS ON REDUCED PLANS, THE ABOVE SCALES MAY BE USED.

J.U.L.I.E.
 JOINT UTILITY LOCATION INFORMATION FOR EXCAVATION
 1-800-892-0123

CONTRACT NO. 44917



Philip Moore 3/1/06
 SIGNATURE

EXPIRATION DATE NOV. 30, 2007

STATE OF ILLINOIS
 DEPARTMENT OF TRANSPORTATION
 DIVISION OF HIGHWAYS

SUBMITTED 05/25/06
Ave. [Signature]
 DEPUTY DIRECTOR OF HIGHWAYS, REGION ENGINEER

May 13, 2006
[Signature]
 ENGINEER OF DESIGN AND ENVIRONMENT

May 12, 2006
[Signature]
 DIRECTOR OF HIGHWAYS, CHIEF ENGINEER

**PRINTED BY THE AUTHORITY
 OF THE STATE OF ILLINOIS**