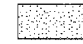
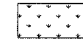

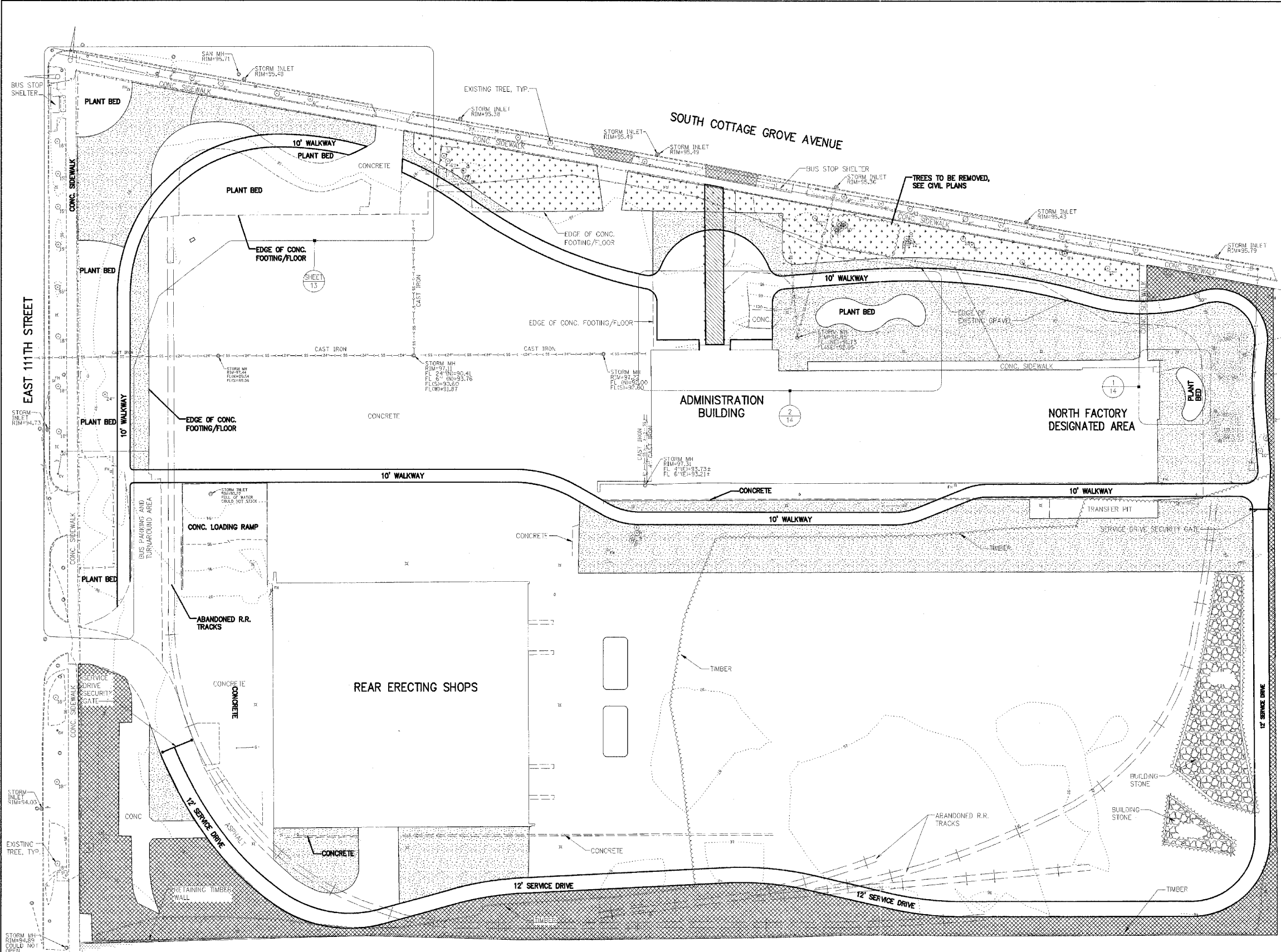


F.A. RTE.	SECTION	COUNTY	TOTAL SHEETS	SHEET NO.
		COOK	17	12
STA.		TO STA.		
FED. ROAD DIST. NO.	ILLINOIS	FED. AID PROJECT		
CONTRACT NO. 44917				

PROPOSED LEGEND

-  GENERAL LOW-MOW GRASS MIX
IDOT CLASS 1-SPECIAL (1.7 AC-72,650)
-  LOW PROFILE GRASS/FORB MIX
IDOT CLASS 5-SPECIAL (0.4 AC)
-  TALL WATERWAY GRASS MIX
IDOT CLASS 4-SPECIAL (0.9 AC)



REVISIONS	
NAME	DATE

ILLINOIS DEPARTMENT OF TRANSPORTATION
LAWN PLANTING PLAN
 IDOT / IHPA
 PULLMAN STATE HISTORIC SITE

SCALE: VERT. _____
 HORIZ. _____
 DATE: 11/06/05

DRAWN BY: DJM
 CHECKED BY: PJM

