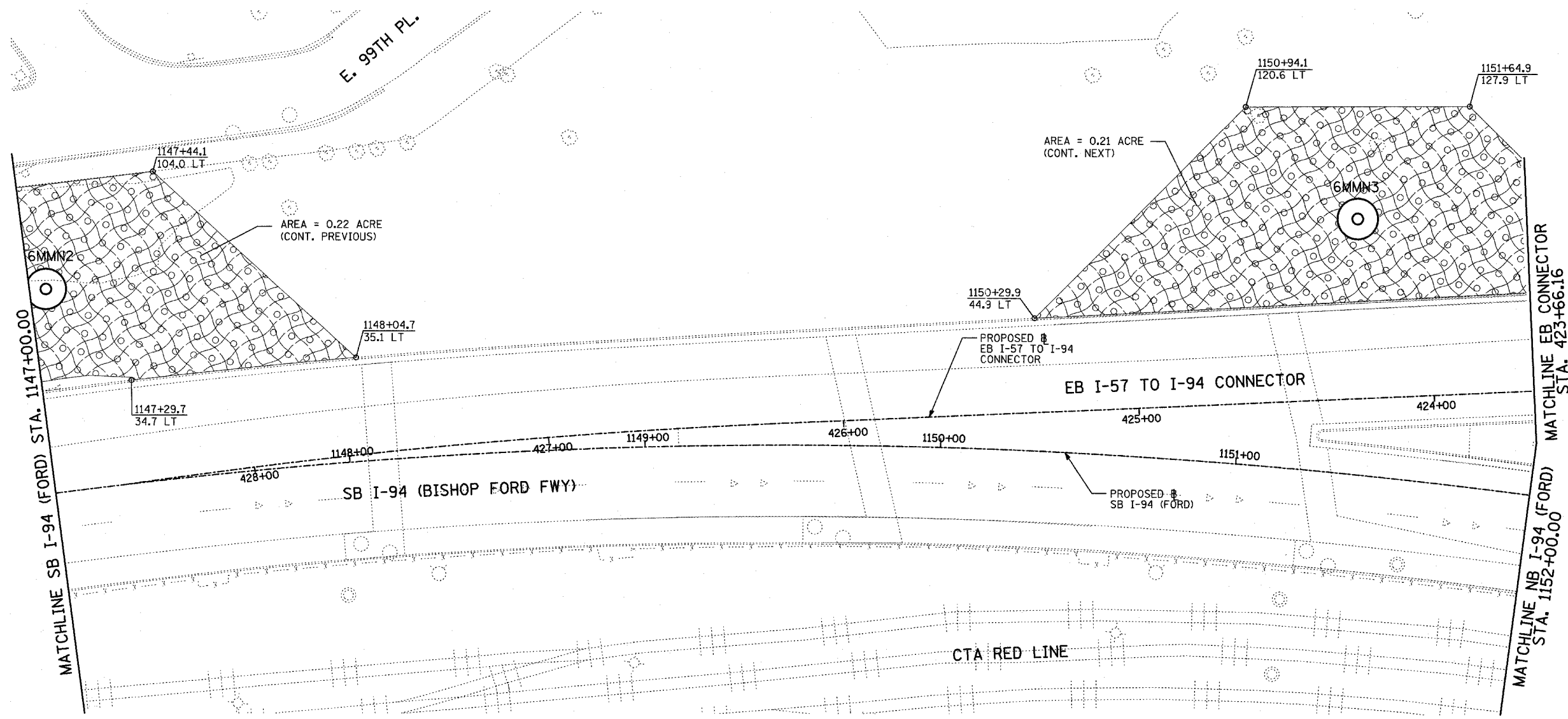
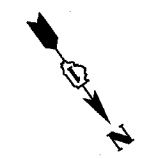


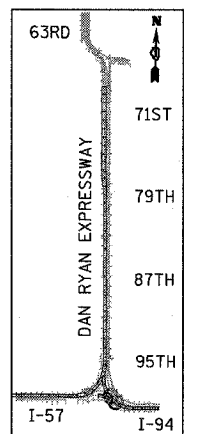
F.A.I. RTE.	SECTION	COUNTY	TOTAL SHEETS	SHEET NO.
94	2005-048 L	COOK	85	48
STA. -----		TO STA. -----		
FED. ROAD DIST. NO.	ILLINOIS	FED. AID PROJECT		

60A23

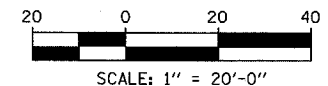


**LEGEND:**

- EROSION CONTROL BLANKET, SEEDING, CLASS 2A, NITROGEN, PHOSPHORUS, AND POTASSIUM FERTILIZER NUTRIENTS,
- EROSION CONTROL BLANKET, SEEDING, CLASS 4 (MODIFIED)
- EROSION CONTROL BLANKET, SEEDING, CLASS 4 (MODIFIED), SEEDING, CLASS 5A (MODIFIED)



LOCATION MAP



**LANDSCAPING GENERAL PLAN NOTES:**

1. THE CONTRACTOR SHALL USE CARE IN GRADING AND SHAPING NEAR ANY AND ALL EXISTING ITEMS WHICH WILL NOT BE REMOVED. ANY DAMAGE DONE TO EXISTING ITEMS BY THE CONTRACTOR SHALL BE REPAIRED BY THE CONTRACTOR AT THE CONTRACTOR'S EXPENSE.
2. THE SEEDING DATES FOR BARE EARTH SEEDING OF MIXTURE CLASS 2A SHALL BE FROM APRIL 1 TO JUNE 1 AND FROM AUGUST 15 TO SEPTEMBER 30. ALL SEEDING NOT SOWN ACCORDING TO THE SPECIFIED SEASONAL DATE SHALL REQUIRE PRIOR APPROVAL FROM THE ENGINEER. FAILURE TO SECURE SUCH APPROVAL SHALL RESULT IN THE REJECTION OF THE SEEDING AND REPLACEMENT BY THE CONTRACTOR AS HIS/HER EXPENSE. AREAS TO BE SEEDDED WITH CLASS 2A BETWEEN NOVEMBER 1 AND APRIL 1 SHALL REQUIRE DORMANT SEEDING, WHICH SHALL BE INCLUDED IN THE COST OF SEEDING CLASS 2A.
3. THE SEEDING DATES FOR BARE EARTH SEEDING OF MIXTURE CLASSES 4 (MODIFIED) OR 5A (MODIFIED) SHALL BE FROM APRIL 15 TO JUNE 30 AND FROM OCTOBER 15 TO DECEMBER 1. ALL SEEDING NOT SOWN ACCORDING TO THE SPECIFIED SEASONAL DATE SHALL REQUIRE PRIOR APPROVAL FROM THE ENGINEER. FAILURE TO SECURE SUCH APPROVAL SHALL RESULT IN THE REJECTION OF THE SEEDING AND REPLACEMENT BY THE CONTRACTOR AS HIS/HER EXPENSE. AREAS TO BE SEEDDED WITH CLASSES 4 (MODIFIED), OR 5A (MODIFIED) BETWEEN DECEMBER 1 AND APRIL 15 SHALL REQUIRE DORMANT SEEDING, WHICH SHALL BE INCLUDED IN THE COST OF CLASS 4 (MODIFIED) OR CLASS 5A (MODIFIED).
4. THE CONTRACTOR SHALL TAKE ALL NECESSARY PRECAUTIONS FOR THE PROTECTION OF EXISTING PLANT MATERIAL FOR WHICH THE CONTRACT DOES NOT PROVIDE REMOVAL. THE PROTECTION OF EXISTING PLANT MATERIAL AND THE REPAIR OR REPLACEMENT OF EXISTING PLANT MATERIAL DAMAGED BY THE CONTRACTOR SHALL BE DONE IN ACCORDANCE WITH THE REQUIREMENTS OF SECTION 201 OF THE STANDARD SPECIFICATIONS.
5. LAYOUT OF LANDSCAPED AREAS WILL REQUIRE APPROVAL OF THE ENGINEER PRIOR TO TOPSOIL PLACEMENT AND SEEDING.

**TYLIN**INTERNATIONAL

REVISIONS	
NAME	DATE

ILLINOIS DEPARTMENT OF TRANSPORTATION  
**F.A.I. 94 (DAN RYAN EXPRESSWAY)**  
 I-57 to 71st STREET  
**LANDSCAPING PLAN**  
 SB I-94 (BISHOP FORD FWY) & EB I-94 TO  
 I-57 CONNECTOR - SB I-94 STA.  
 1147+00.00 TO EB CONNECTOR STA. 423+66.16  
 (SHEET 13 OF 27)

SCALE: 1"=20'  
 DATE: JANUARY 9, 2007

DRAWN BY: CBS  
 CHECKED BY: TGB