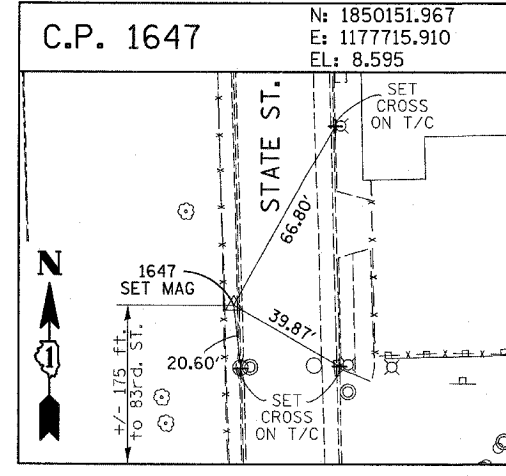
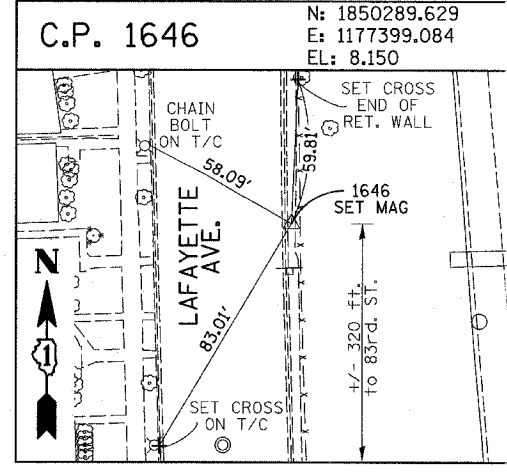
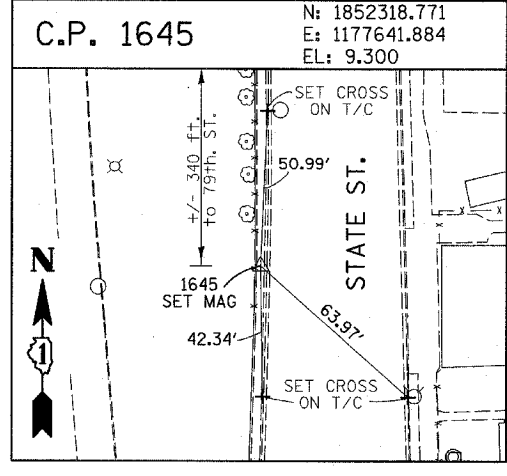
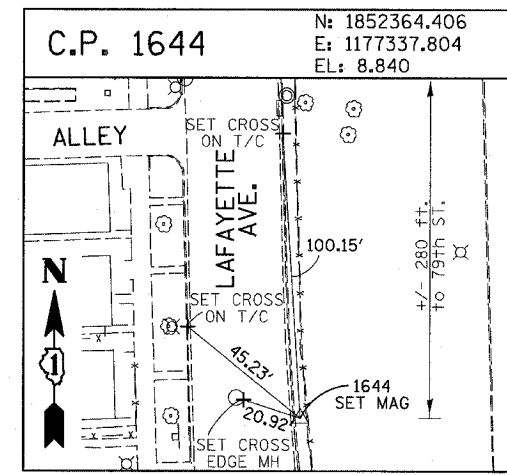
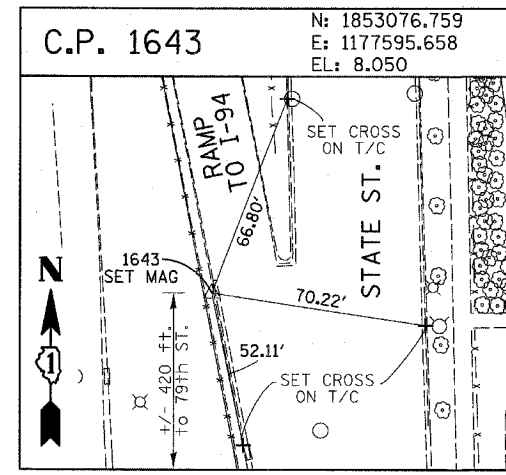
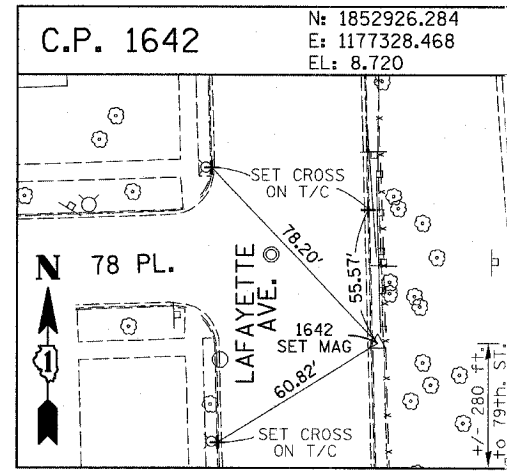
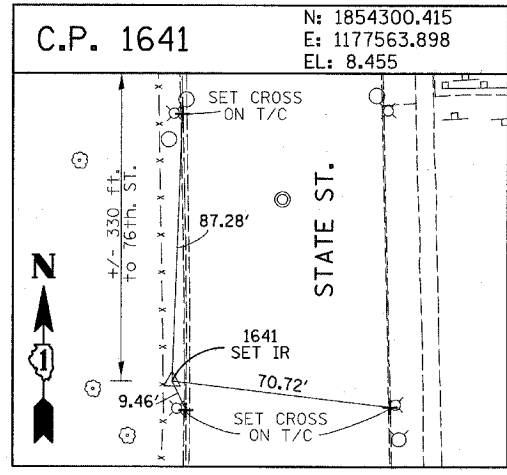
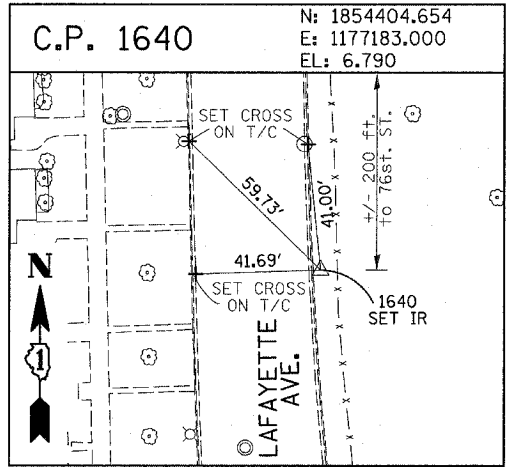
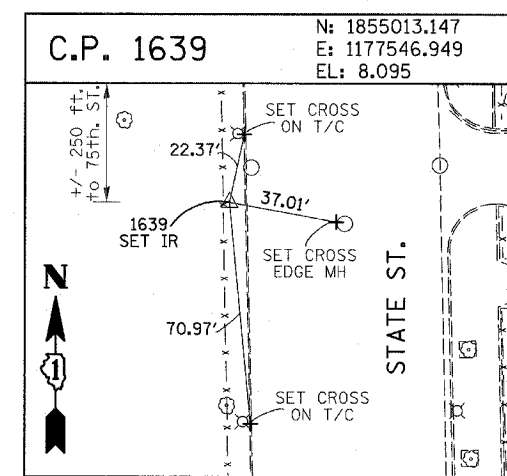
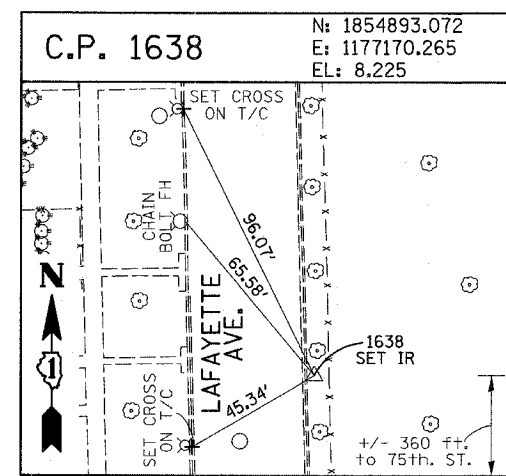
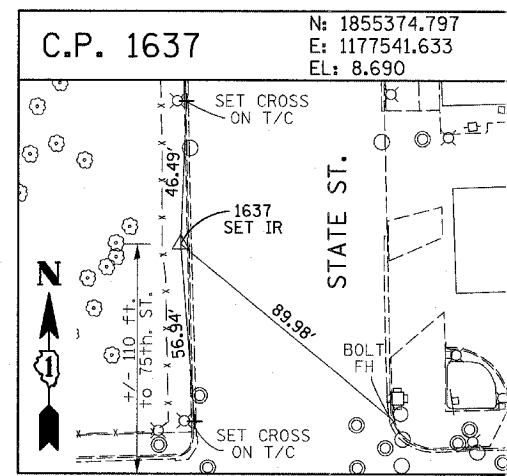
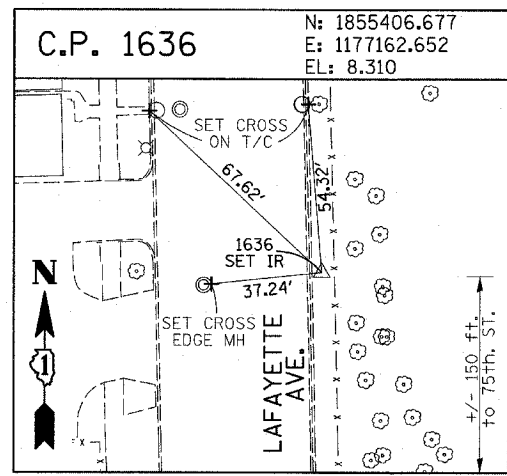
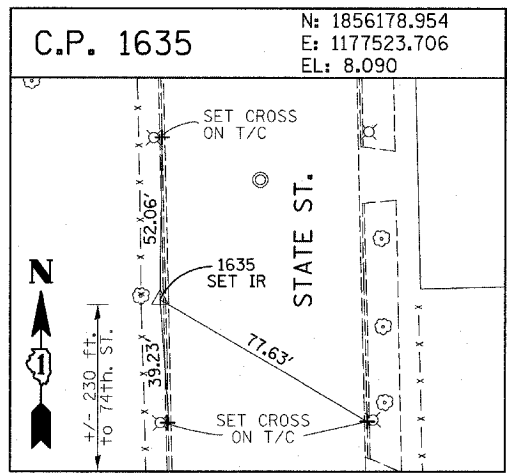
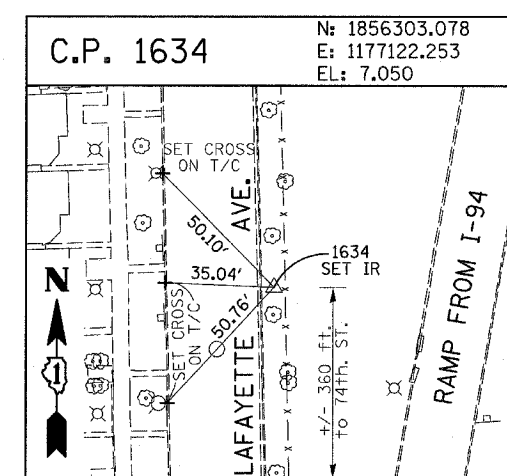
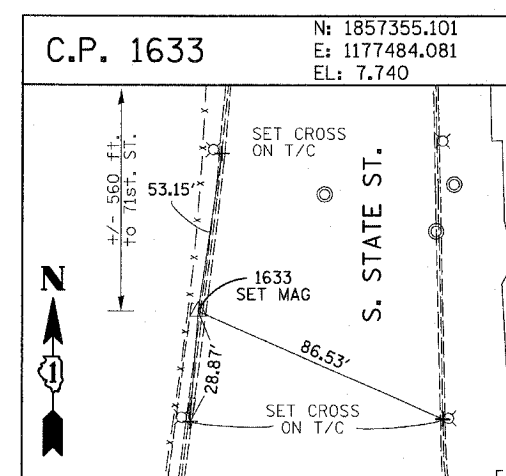
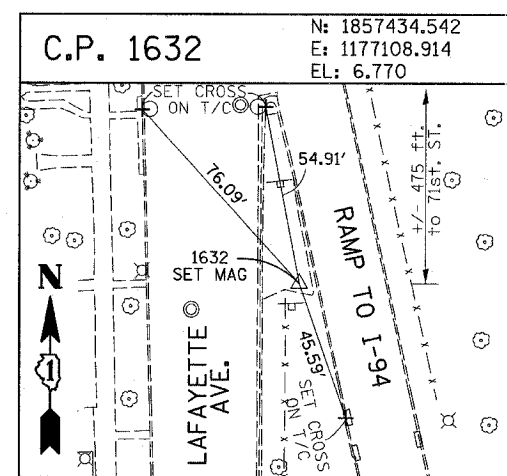
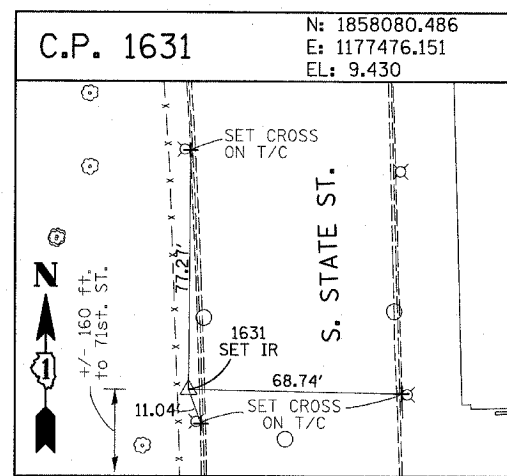
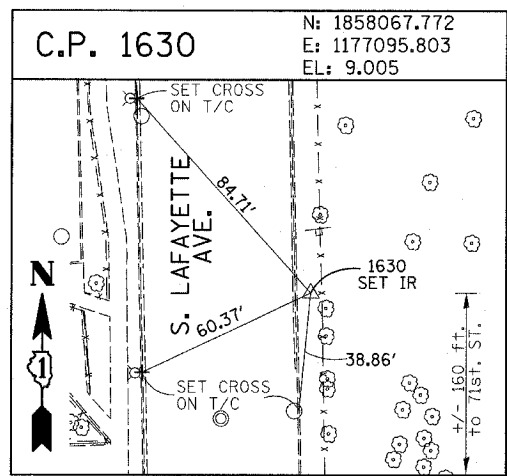


F.A.I. RTE.	SECTION	COUNTY	TOTAL SHEETS	SHEET NO.
94	2005-048 L	COOK	85	72
STA. -----		TO STA. -----		
FED. ROAD DIST. NO.		ILLINOIS FED. AID PROJECT		60A23



American Surveying Consultants, P.C.
 SURVEYING-ENGINEERING-GEODESY-MAPPING SCIENTISTS
 1677 Frank Rd., Suite 101, Lisle, IL 60115
 630 N. Northwest Highway, Suite 100, Rosemead, IL 60018
 615-262-2251

REVISIONS	
NAME	DATE

ILLINOIS DEPARTMENT OF TRANSPORTATION
 F.A.I. 94 (DAN RYAN EXPRESSWAY)
 I-57 TO 71ST STREET
 SURVEY TIES FOR CONTROL POINTS
 SHEET 2 OF 4
 SCALE: 1"=30'
 DATE: JANUARY 9, 2007
 DRAWN BY: GSP
 CHECKED BY: MMW