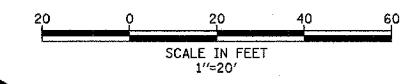


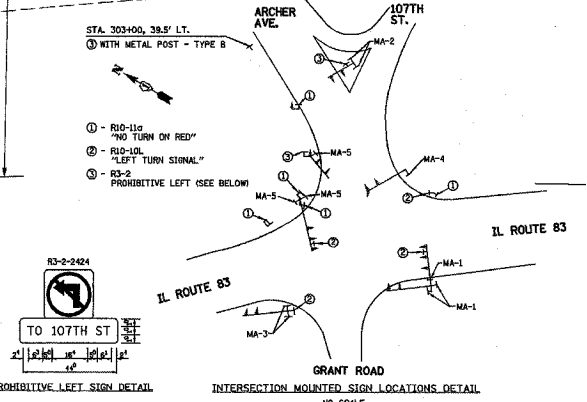
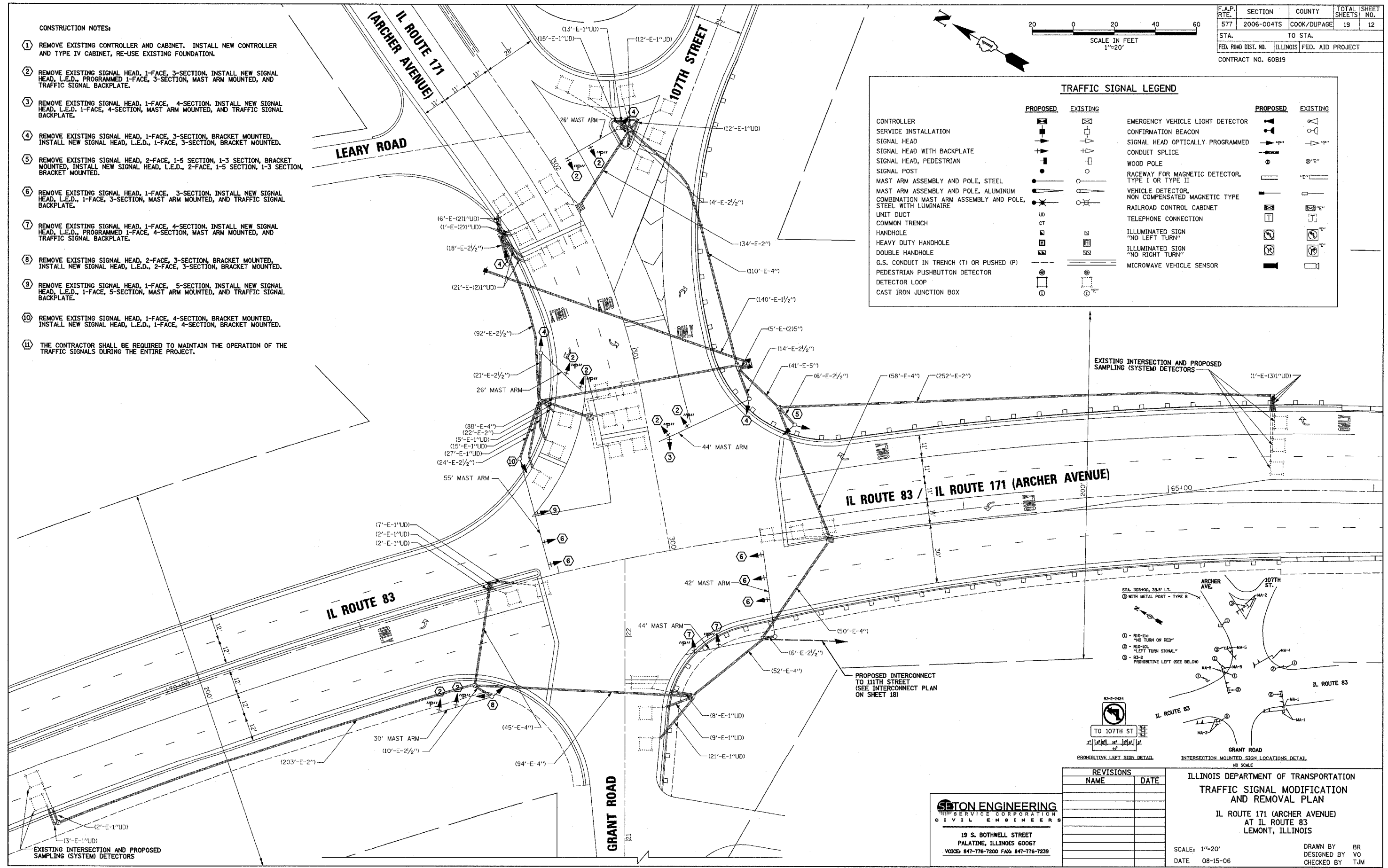
F.A.P. RTE.	SECTION	COUNTY	TOTAL SHEETS	SHEET NO.
577	2006-004TS	COOK/DUPAGE	19	12
STA.	TO STA.			
FED. ROAD DIST. NO.	ILLINOIS FED. AID PROJECT			
CONTRACT NO. 60819				



- CONSTRUCTION NOTES:**
- 1 REMOVE EXISTING CONTROLLER AND CABINET. INSTALL NEW CONTROLLER AND TYPE IV CABINET, RE-USE EXISTING FOUNDATION.
 - 2 REMOVE EXISTING SIGNAL HEAD, 1-FACE, 3-SECTION. INSTALL NEW SIGNAL HEAD, L.E.D., PROGRAMMED 1-FACE, 3-SECTION, MAST ARM MOUNTED, AND TRAFFIC SIGNAL BACKPLATE.
 - 3 REMOVE EXISTING SIGNAL HEAD, 1-FACE, 4-SECTION. INSTALL NEW SIGNAL HEAD, L.E.D., 1-FACE, 4-SECTION, MAST ARM MOUNTED, AND TRAFFIC SIGNAL BACKPLATE.
 - 4 REMOVE EXISTING SIGNAL HEAD, 1-FACE, 3-SECTION, BRACKET MOUNTED. INSTALL NEW SIGNAL HEAD, L.E.D., 1-FACE, 3-SECTION, BRACKET MOUNTED.
 - 5 REMOVE EXISTING SIGNAL HEAD, 2-FACE, 1-5 SECTION, 1-3 SECTION, BRACKET MOUNTED. INSTALL NEW SIGNAL HEAD, L.E.D., 2-FACE, 1-5 SECTION, 1-3 SECTION, BRACKET MOUNTED.
 - 6 REMOVE EXISTING SIGNAL HEAD, 1-FACE, 3-SECTION. INSTALL NEW SIGNAL HEAD, L.E.D., 1-FACE, 3-SECTION, MAST ARM MOUNTED, AND TRAFFIC SIGNAL BACKPLATE.
 - 7 REMOVE EXISTING SIGNAL HEAD, 1-FACE, 4-SECTION. INSTALL NEW SIGNAL HEAD, L.E.D., PROGRAMMED 1-FACE, 4-SECTION, MAST ARM MOUNTED, AND TRAFFIC SIGNAL BACKPLATE.
 - 8 REMOVE EXISTING SIGNAL HEAD, 2-FACE, 3-SECTION, BRACKET MOUNTED. INSTALL NEW SIGNAL HEAD, L.E.D., 2-FACE, 3-SECTION, BRACKET MOUNTED.
 - 9 REMOVE EXISTING SIGNAL HEAD, 1-FACE, 5-SECTION. INSTALL NEW SIGNAL HEAD, L.E.D., 1-FACE, 5-SECTION, MAST ARM MOUNTED, AND TRAFFIC SIGNAL BACKPLATE.
 - 10 REMOVE EXISTING SIGNAL HEAD, 1-FACE, 4-SECTION, BRACKET MOUNTED. INSTALL NEW SIGNAL HEAD, L.E.D., 1-FACE, 4-SECTION, BRACKET MOUNTED.
 - 11 THE CONTRACTOR SHALL BE REQUIRED TO MAINTAIN THE OPERATION OF THE TRAFFIC SIGNALS DURING THE ENTIRE PROJECT.

TRAFFIC SIGNAL LEGEND

	PROPOSED	EXISTING		PROPOSED	EXISTING
CONTROLLER	[Symbol]	[Symbol]	EMERGENCY VEHICLE LIGHT DETECTOR	[Symbol]	[Symbol]
SERVICE INSTALLATION	[Symbol]	[Symbol]	CONFIRMATION BEACON	[Symbol]	[Symbol]
SIGNAL HEAD	[Symbol]	[Symbol]	SIGNAL HEAD OPTICALLY PROGRAMMED	[Symbol]	[Symbol]
SIGNAL HEAD WITH BACKPLATE	[Symbol]	[Symbol]	CONDUIT SPLICE	[Symbol]	[Symbol]
SIGNAL HEAD, PEDESTRIAN	[Symbol]	[Symbol]	WOOD POLE	[Symbol]	[Symbol]
SIGNAL POST	[Symbol]	[Symbol]	RACEWAY FOR MAGNETIC DETECTOR, TYPE I OR TYPE II	[Symbol]	[Symbol]
MAST ARM ASSEMBLY AND POLE, STEEL	[Symbol]	[Symbol]	VEHICLE DETECTOR, NON COMPENSATED MAGNETIC TYPE	[Symbol]	[Symbol]
MAST ARM ASSEMBLY AND POLE, ALUMINUM	[Symbol]	[Symbol]	RAILROAD CONTROL CABINET	[Symbol]	[Symbol]
COMBINATION MAST ARM ASSEMBLY AND POLE, STEEL WITH LUMINAIRE	[Symbol]	[Symbol]	TELEPHONE CONNECTION	[Symbol]	[Symbol]
UNIT DUCT	[Symbol]	[Symbol]	ILLUMINATED SIGN "NO LEFT TURN"	[Symbol]	[Symbol]
COMMON TRENCH	[Symbol]	[Symbol]	ILLUMINATED SIGN "NO RIGHT TURN"	[Symbol]	[Symbol]
HANDHOLE	[Symbol]	[Symbol]	MICROWAVE VEHICLE SENSOR	[Symbol]	[Symbol]
HEAVY DUTY HANDHOLE	[Symbol]	[Symbol]			
DOUBLE HANDHOLE	[Symbol]	[Symbol]			
G.S. CONDUIT IN TRENCH (T) OR PUSHED (P)	[Symbol]	[Symbol]			
PEDESTRIAN PUSHBUTTON DETECTOR	[Symbol]	[Symbol]			
DETECTOR LOOP	[Symbol]	[Symbol]			
CAST IRON JUNCTION BOX	[Symbol]	[Symbol]			



REVISIONS

NAME	DATE

SETON ENGINEERING
 A SERVICE CORPORATION
 CIVIL ENGINEERS
 19 S. BOTHWELL STREET
 PALATINE, ILLINOIS 60067
 VOICE: 847-776-7200 FAX: 847-776-7239

ILLINOIS DEPARTMENT OF TRANSPORTATION
 TRAFFIC SIGNAL MODIFICATION
 AND REMOVAL PLAN
 IL ROUTE 171 (ARCHER AVENUE)
 AT IL ROUTE 83
 LEMONT, ILLINOIS
 SCALE: 1"=20'
 DATE: 08-15-06
 DRAWN BY: BR
 DESIGNED BY: VO
 CHECKED BY: TJM