

ROUTE	SECTION	COUNTY	TOTAL SHEETS	SHEET NUMBER
FAP 338	2006-0111	DuPAGE	7	1

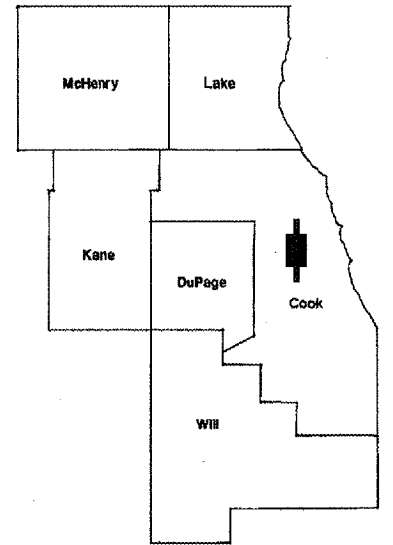
FOR INDEX OF SHEETS SEE SHEET 2

CONTRACT NO. 60B34

STATE OF ILLINOIS
DEPARTMENT OF TRANSPORTATION
DIVISION OF HIGHWAYS
DISTRICT ONE
PROPOSED HIGHWAY PLANS

FAP ROUTE 338: IL 59
OVER ABANDONED RR
SECTION 2006-0111
SLOPE WALL REPAIRS
DuPAGE COUNTY
C-91-324-06
SN 022-0144

D-91-324-06

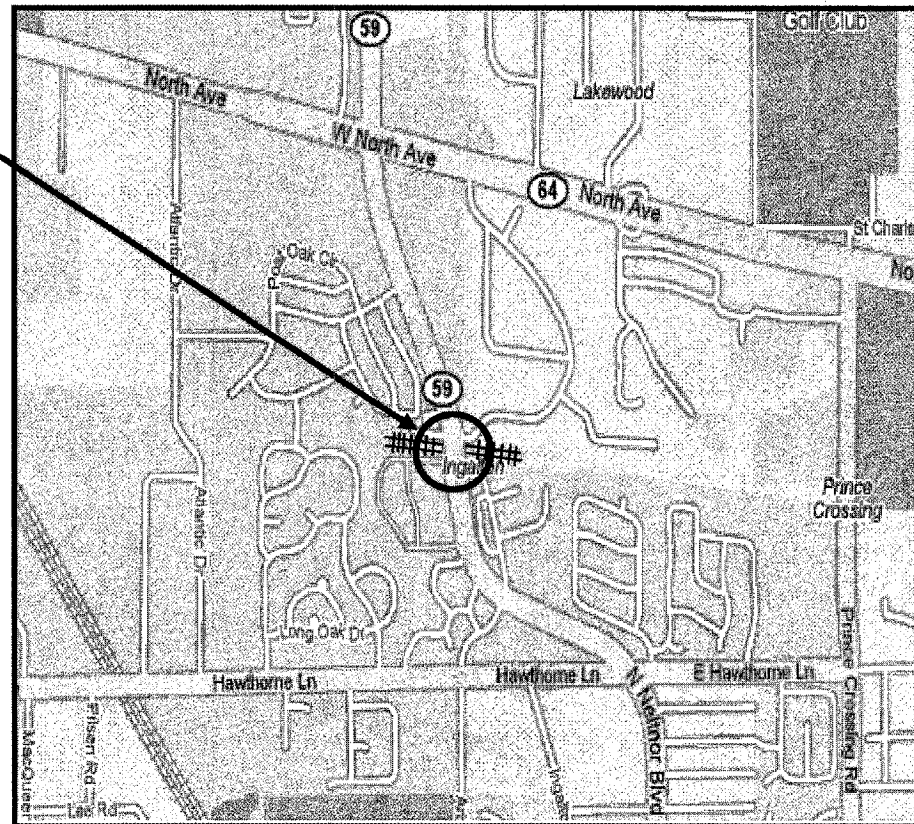


LOCATION OF IMPROVEMENT INDICATED THUS: 

IMPROVEMENT IS LOCATED IN
WAYNE TOWNSHIP

LOCATION OF
IMPROVEMENT AT
SN 022-0144

R 9 E



T 40 N



TRAFFIC DATA:

IL 59: SPEED LIMIT = 45 MPH
2005 ADT = 36,300

STATE OF ILLINOIS
DEPARTMENT OF TRANSPORTATION
DIVISION OF HIGHWAYS

SUBMITTED: *January 4 20 07*

Diane O'Keefe/CM

DEPUTY DIRECTOR OF HIGHWAYS, REGION ENGINEER

February 2 20 07

Eric E. Harms

INTERIM ENGINEER OF DESIGN AND ENVIRONMENT

February 2 20 07

Melvin R. Sorel, P.E.

DIRECTOR, DIVISION OF HIGHWAYS

PRINTED BY THE AUTHORITY
OF THE STATE OF ILLINOIS

J.U.L.I.E.: JOINT UTILITY LOCATION
INFORMATION FOR EXCAVATION
(800) 892-0123

CONTRACT NO. 60B34

WAYNE TOWNSHIP

DISTRICT ONE - DESIGN - PLAN PREPARATION ENGINEER:
KEN ENG / ROBERT BORO (847) 705-4178

ROUTE	SECTION	COUNTY	TOTAL SHEETS	SHEET NUMBER
FAP 338	2006-0111	DuPAGE	7	2

CONTRACT NO: 60B34

INDEX OF SHEETS

1	TITLE SHEET
2	INDEX OF SHEETS, STATE STANDARDS AND GENERAL NOTES
3	SUMMARY OF QUANTITIES
4	BRIDGE PLAN
5	SLOPE WALL REPAIR
6	RIP RAP CROSS SECTION

STATE STANDARDS

STANDARD NO	DESCRIPTION
701001-01	OFF ROAD OPERATIONS, 2L, 2W
701101-01	OFF ROAD OPERATIONS, MULTILANE
701301-02	LANE CLOSURE, 2L, 2W, SHORT TIME OPERATIONS
701601-04	URBAN LANE CLOSURE, MULTILANE, 1W OR 2W WITH NONTRAVERSABLE MEDIAN
702001-06	TRAFFIC CONTROL DEVICES

GENERAL NOTES

BEFORE STARTING ANY EXCAVATION, THE CONTRACTOR SHALL CALL J.U.L.I.E. AT 800-892-0123 FOR FIELD LOCATIONS OF BURIED ELECTRIC, TELEPHONE AND GAS UTILITIES (48 HOURS NOTIFICATION IS REQUIRED).

THE CONTRACTOR WILL NOT BE ALLOWED TO SET UP A YARD OR FIELD OFFICE ON STATE PROPERTY WITHOUT WRITTEN PERMISSION FROM THE DEPARTMENT.

IT SHALL BE THE CONTRACTOR'S RESPONSIBILITY TO VERIFY ALL DIMENSIONS AND CONDITIONS EXISTING IN THE FIELD PRIOR TO CONSTRUCTION AND ORDERING OF MATERIALS.

THE CONTRACTOR SHALL CONTACT THE DISTRICT ONE TRAFFIC CONTROL SUPERVISOR AT (847) 705-4470 A MINIMUM OF 72 HOURS IN ADVANCE OF BEGINNING WORK..

DO NOT SCALE PLANS FOR CONSTRUCTION DIMENSIONS.

THE CONTRACTOR SHALL COORDINATE CONSTRUCTION ACTIVITIES WITH UTILITY COMPANIES.

LAYOUT OF SLOPE PROTECTION SYSTEM MAY BE VARIED IN THE FIELD TO SUIT GROUND CONDITIONS AS DIRECTED BY THE ENGINEER.

THESE PLANS HAVE BEEN PREPARED FROM NOTES RECEIVED FROM FIELD MAINTENANCE ENGINEERS.

ILLINOIS DEPARTMENT OF TRANSPORTATION

INDEX OF SHEETS
STATE STANDARDS
GENERAL NOTES

FAI ROUTE	SECTION	COUNTY	TOTAL SHEETS	SHEET NUMBER
FAP 338	2006-0111	DuPAGE	7	3

CONTRACT 60B34

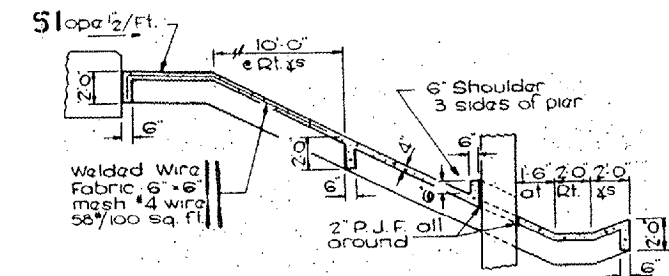
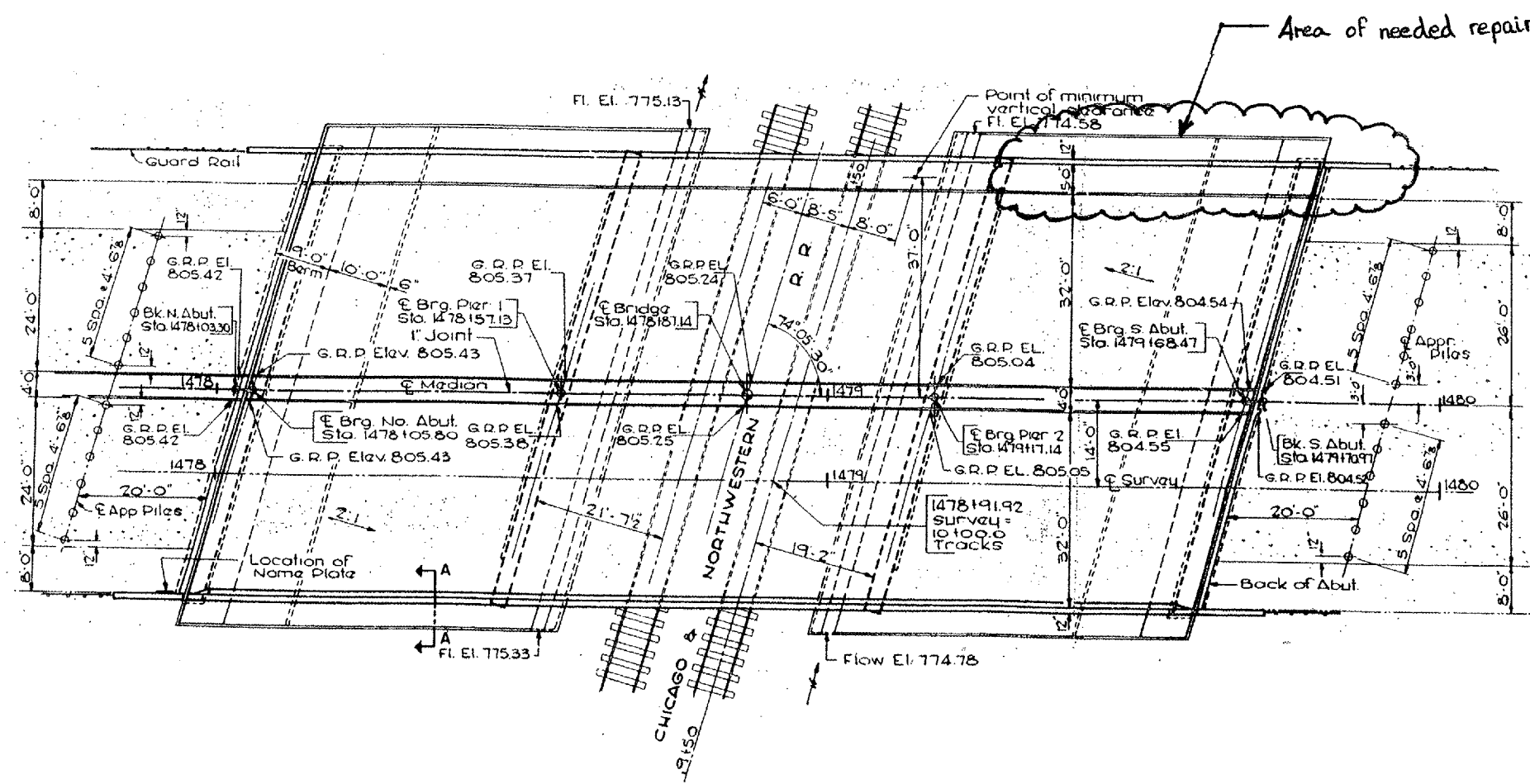
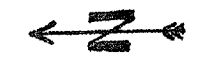
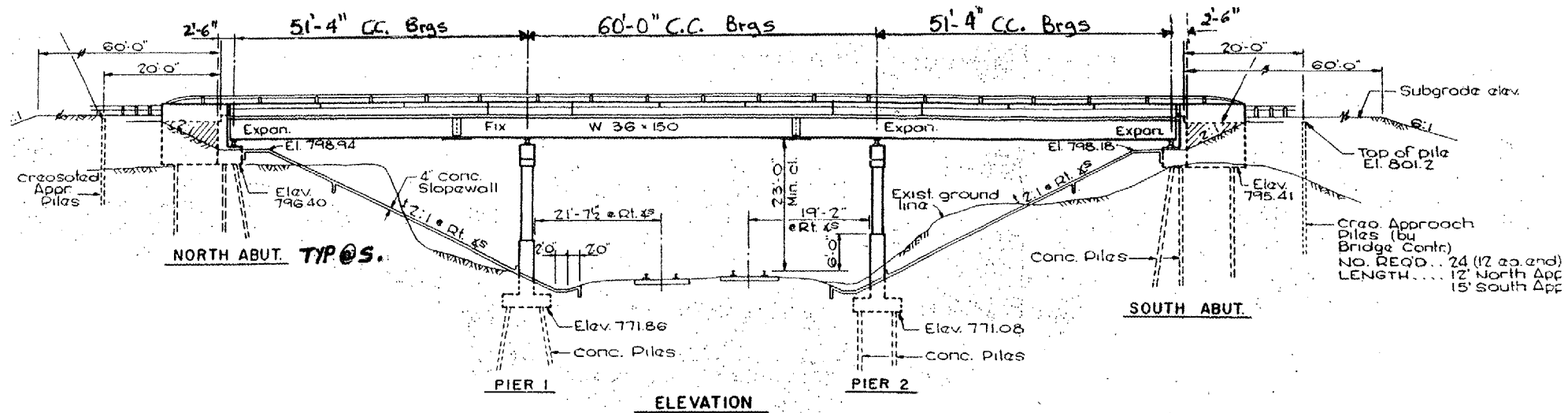
SUMMARY OF QUANTITIES

CONSTRUCTION TYPE CODE: SFTY - 2A			<i>URBAN</i> <i>100% STATE</i>
CODE NO.	ITEMS	UNITS	TOTAL QUANTITIES
20700420	POROUS GRANULAR EMBANKMENT, SUBGRADE	CU YD	58
28100109	STONE RIP RAP, CLASS A5	SQ YD	53
50104650	SLOPE WALL REMOVAL	SQ YD	53
59300100	CONTROLLED LOW-STRENGTH MATERIAL	CU YD	3
67000400	ENGINEER'S FIELD OFFICE, TYPE A	CAL MO	2
67100100	MOBILIZATION	L SUM	1
70102630	TRAFFIC CONTROL AND PROTECTION, STANDARD 701601	L SUM	1
X0322467	TEMPORARY INFORMATION SIGN FOR LANE CLOSURE	SQ FT	48
28200200	FILTER FABRIC	SQ YD	55

ILLINOIS DEPARTMENT OF TRANSPORTATION

SUMMARY OF QUANTITIES

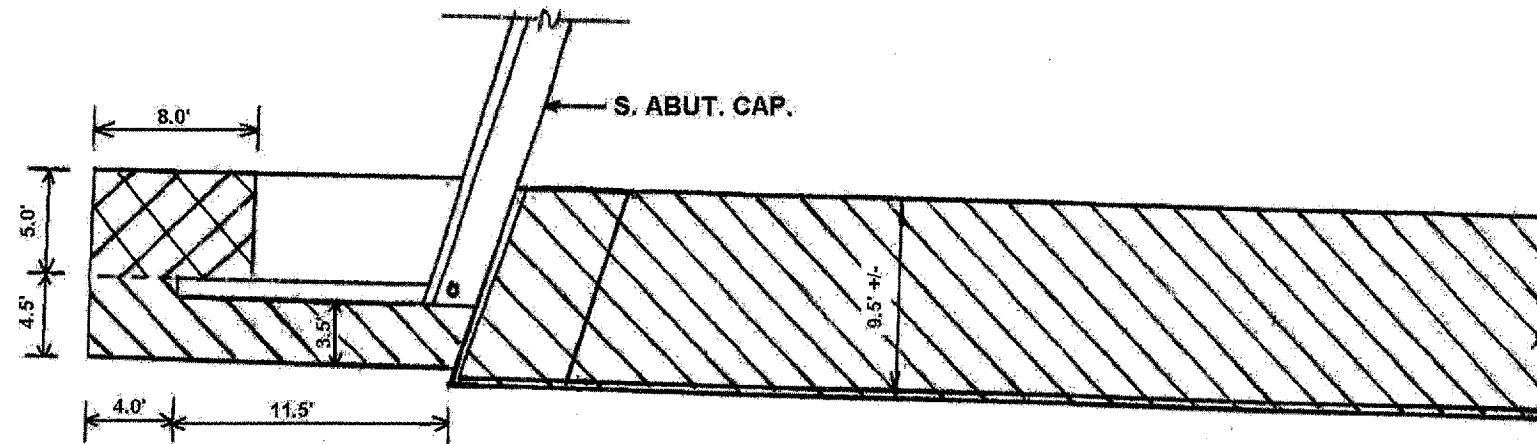
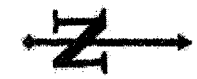
ROUTE	SECTION	COUNTY	TOTAL SHEETS	SHEET NUMBER
FAP 338	2006-0111	DuPAGE	7	4



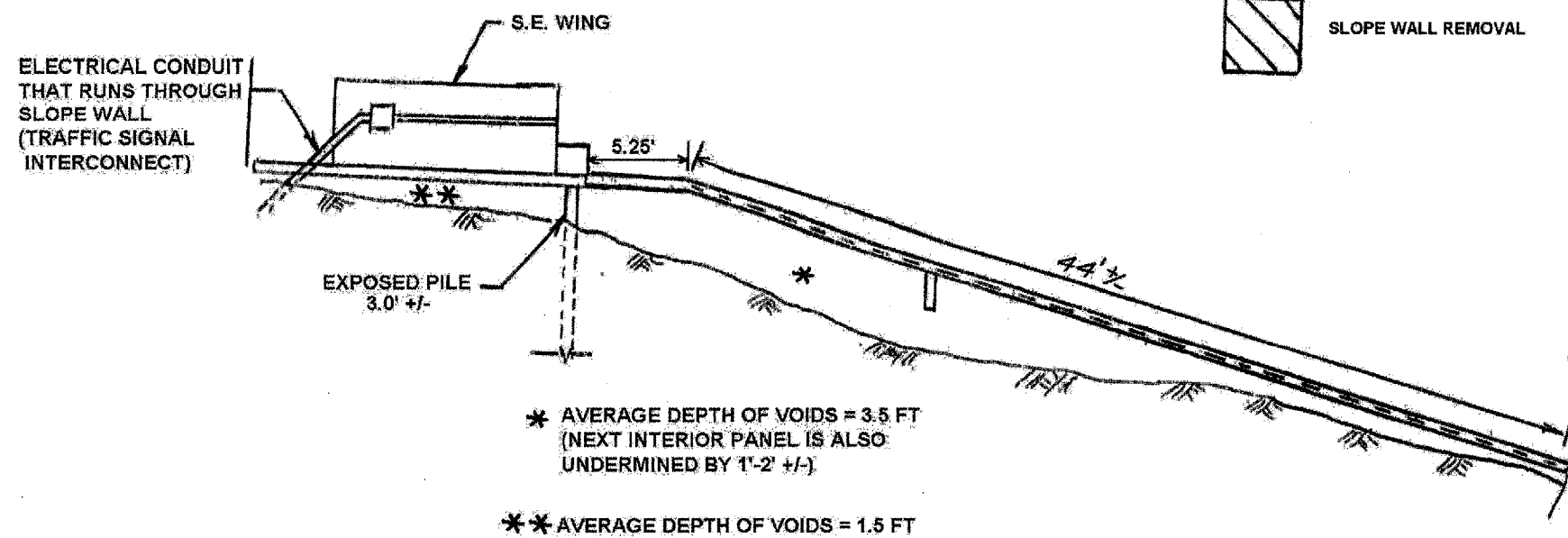
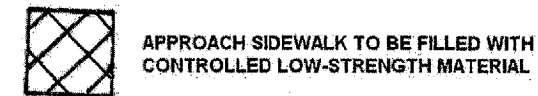
ILLINOIS DEPARTMENT OF
TRANSPORTATION

BRIDGE PLAN

ROUTE	SECTION	COUNTY	TOTAL SHEETS	SHEET NUMBER
FAP 338	2006-0111	DuPAGE	7	5



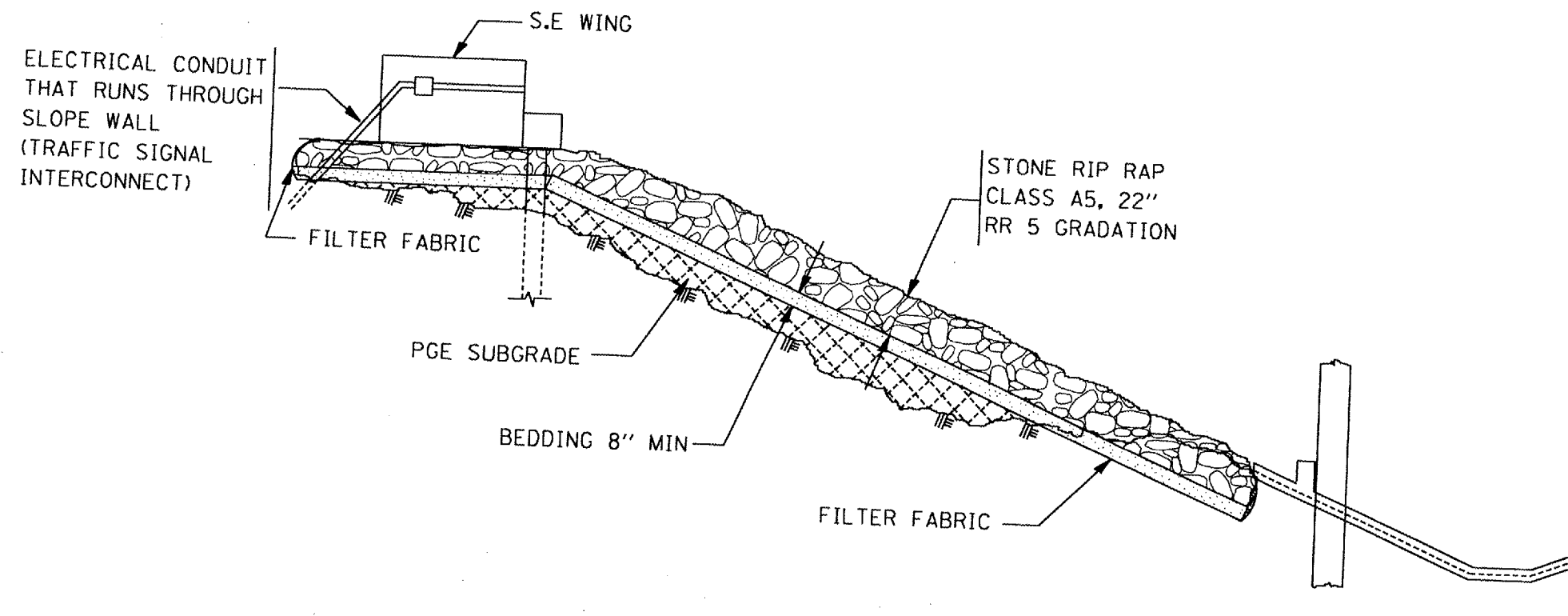
PLAN VIEW



ILLINOIS DEPARTMENT OF
TRANSPORTATION

SLOPEWALL REPAIR

ROUTE	SECTION	COUNTY	TOTAL SHEETS	SHEET NUMBER
FAP 338	2006-0111	DuPAGE	7	6



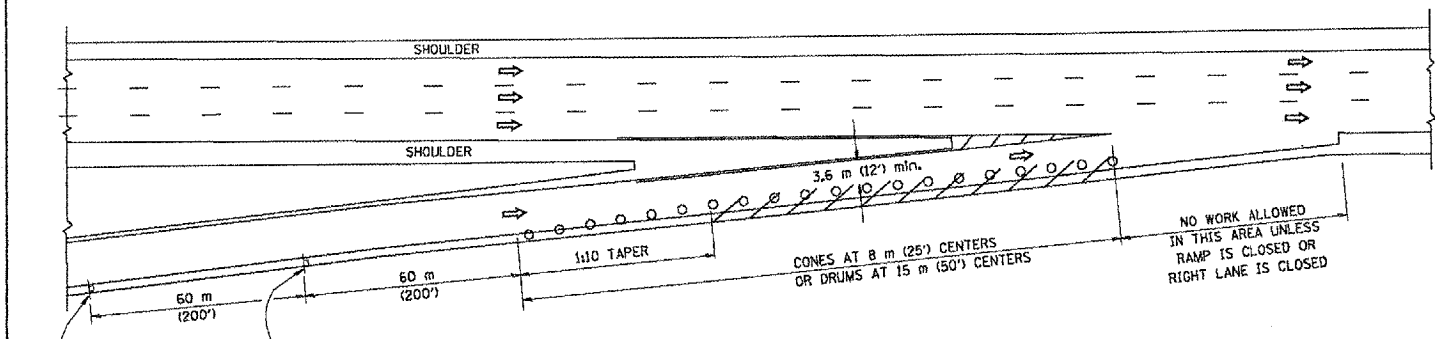
ILLINOIS DEPARTMENT OF
TRANSPORTATION

RIP RAP CROSS SECTION

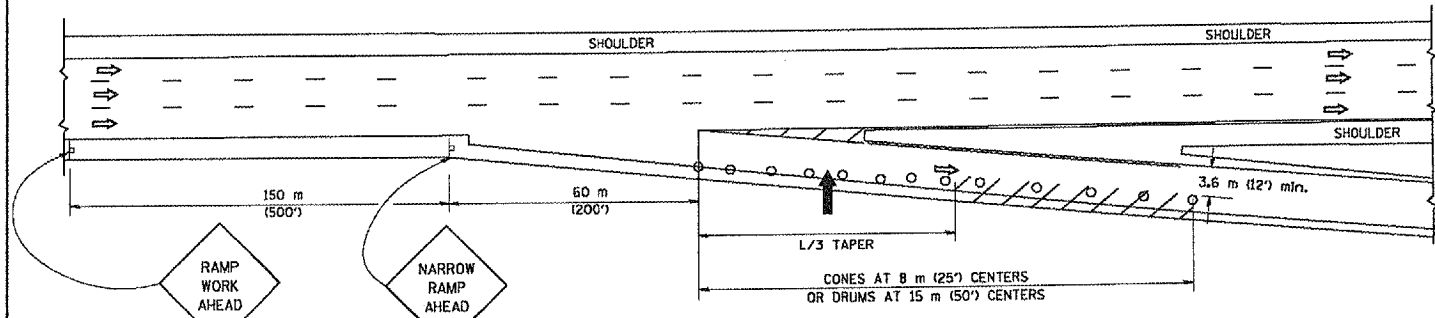
F.A.P. RTE.	SECTION	COUNTY	TOTAL SHEETS	SHEET NO.
378	2006-0117	DuPAGE	7	7
STA. TO STA.		FED. ROAD DIST. NO. ILLINOIS FED. AID PROJECT		

CREATED: 03-23-95

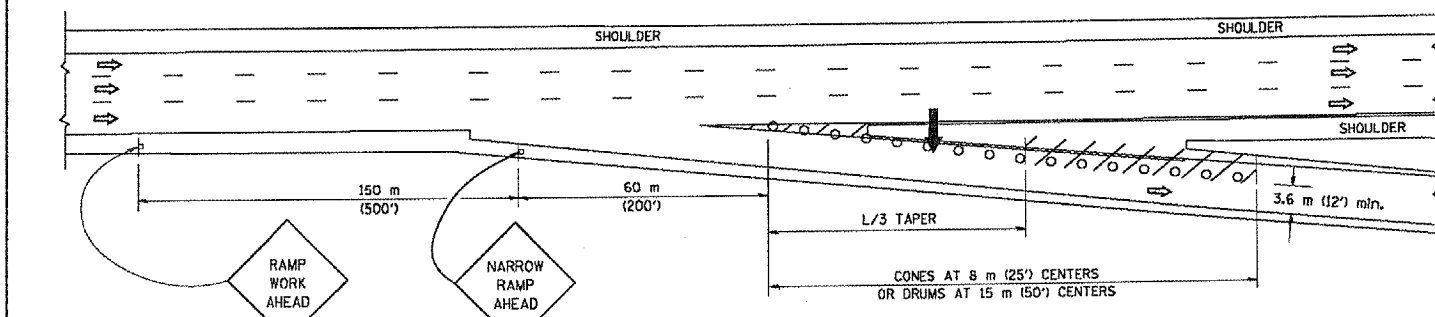
PARTIAL RAMP CLOSURE DETAILS



TYPICAL ENTRANCE RAMP



TYPICAL EXIT RAMP



TYPICAL EXIT RAMP

SYMBOLS

- ARROWBOARD
- WORK AREA
- SIGN ON PORTABLE OR PERMANENT SUPPORT
- FLAGGER WITH CONTROL SIGN
- DRUM WITH MONO-DIRECTIONAL STEADY BURNING LIGHT
- CONES - 700 (28) IN HEIGHT

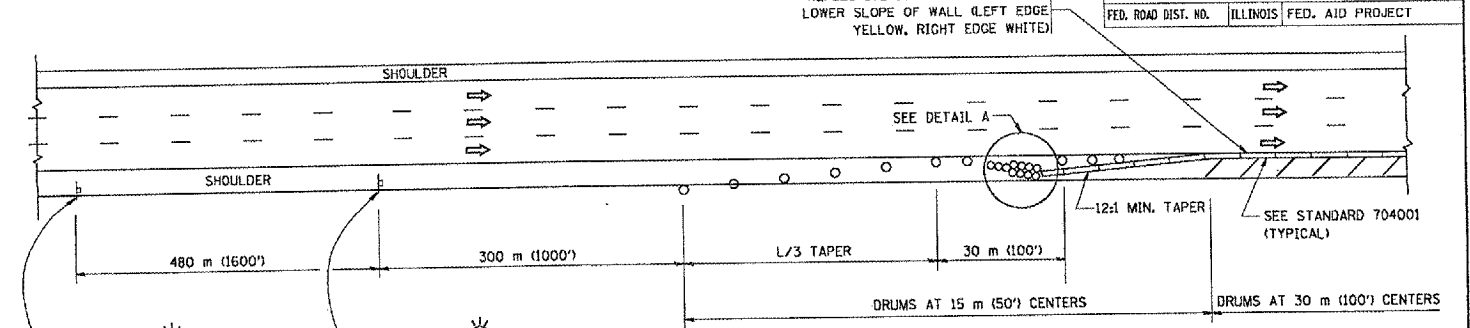
GENERAL NOTES

- THE "L" DISTANCE EQUALS:

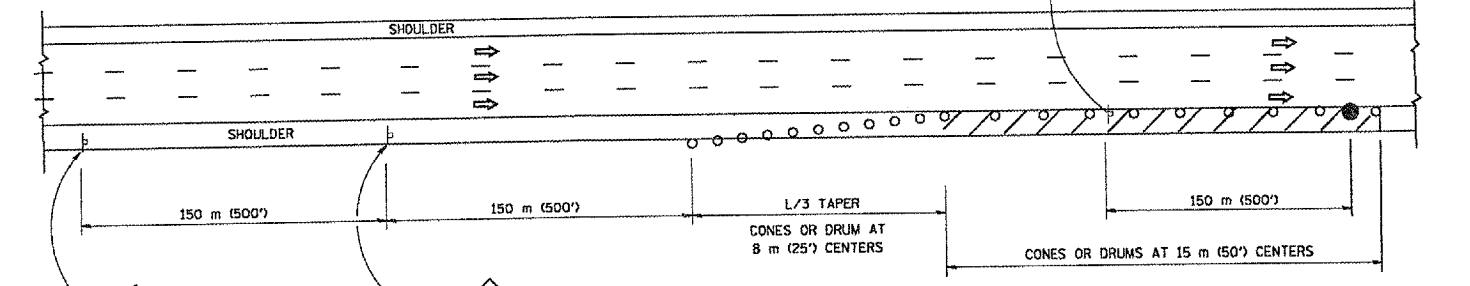
SPEED LIMIT		FORMULAS	
80 km/h (45 mph)	METRIC	$L=0.65(W)(S)$	ENGLISH
OR GREATER:		$L=(W)(S)$	

W = WIDTH OF OFFSET IN METERS (FEET)
S = NORMAL POSTED SPEED KM/H (MPH)
- PLASTIC DRUMS WITH HIGH PERFORMANCE REFLECTIVE SHEETING AND STEADY BURNING LIGHTS ARE REQUIRED FOR ALL NIGHTTIME CLOSURES.
- ALL SIGNS SHALL BE POST MOUNTED IF THE CLOSURE TIME EXCEEDS FOUR DAYS.
- FLASHING LIGHTS SHALL BE USED DURING THE HOURS OF DARKNESS AND SHALL BE INSTALLED ABOVE THE FIRST TWO SETS OF SIGNS.

SHOULDER CLOSURE DETAILS

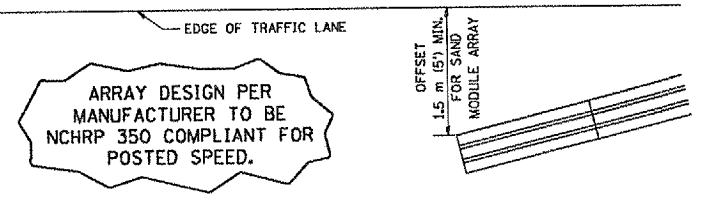


PERMANENT SHOULDER CLOSURE



DAYTIME SHOULDER CLOSURE

THIS DETAIL IS USED WHERE:
1. VEHICLES, EQUIPMENT, WORKERS OR THEIR ACTIVITIES ENCRUSH IN AN AREA CLOSER THAN 4.5 m (15') TO THE EDGE OF PAVEMENT FOR A PERIOD IN EXCESS OF 15 MINUTES.



DETAIL "A"
IMPACT ATTENUATOR, TEMPORARY
(SEE NOTE 5)

- THE IMPACT ATTENUATOR, TEMPORARY IS NOT REQUIRED WHEN THE TEMPORARY CONCRETE BARRIER WALL IS PROTECTED BY OR IS TIED INTO THE EXISTING GUARDRAIL. IF OFFSET IS LESS THAN 5 FEET USE "TRAFFIC BARRIER TERMINAL, TYPE III, TEMPORARY" DEVICE TO MEET NCHRP350 FOR POSTED SPEED.
- AUTHORIZATION FROM THE DISTRICT'S BUREAU OF TRAFFIC IS REQUIRED FOR ALL FREEWAY CLOSURES.
- THE FLAGGER AND FLAGGER SIGN ARE REQUIRED AT THE ABOVE WORK SITES WHEN:
 - FOUR OR MORE WORK VEHICLES ENTER THE TRAFFIC LANES IN A ONE HOUR PERIOD.
 - THE WORK ACTIVITY REQUIRES FREQUENT ENCROACHMENT INTO THE LANE OPEN TO TRAFFIC.
 THE FLAGGER SHALL BE STATIONED APPROXIMATELY 30 m (100') TO 60 m (200') IN ADVANCE OF THE WORKERS.

ALL DIMENSIONS ARE IN MILLIMETERS (INCHES) UNLESS OTHERWISE SHOWN.

REVISIONS	
NAME	DATE
DWS	11/96
JAF	12/02
NCHRP 350	04/03
JAF	2/06

ILLINOIS DEPARTMENT OF TRANSPORTATION
TRAFFIC CONTROL DETAILS
FOR FREEWAY
SHOULDER CLOSURES
PARTIAL RAMP CLOSURES
DESIGNED BY: DWS
DRAWN BY:
CHECKED BY:
TC-17
SCALE: NONE
DATE: 3/1/2006
REVISION DATE: 02/28/06

PLOT DATE = 2/1/2006
 FILE NAME = N:\11\1101017.dgn
 PLOT SCALE = 50.00000 / 1" = 100'
 USER NAME = jafg