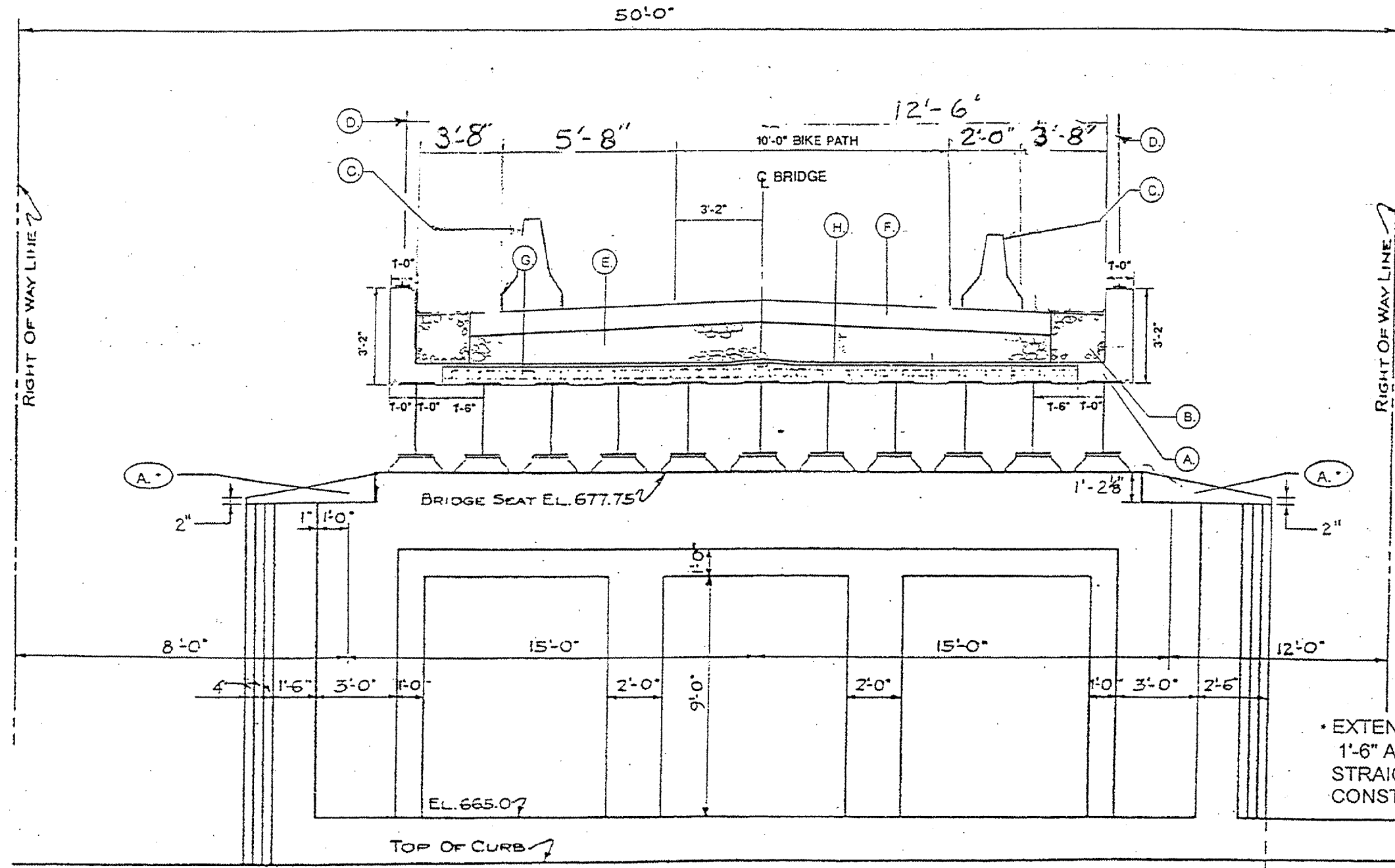


ROUTE	SECTION	COUNTY	TOTAL SHEETS	SHEET NUMBER
VARIOUS	2006-018 BP	VARIOUS	27	13

CONTRACT NO.: 60B43



- LEGEND**
- A. PROPOSED CONCRETE SUPERSTRUCTURE
 - B. PROPOSED AGGREGATE SHOULDER, TYPE B
 - C. PROPOSED STATE-OWNED TEMPORARY CONCRETE BARRIER
 - D. PROPOSED CHAIN LINK FENCE, 8.0'
 - E. EXISTING AGGREGATE BASE
 - F. EXISTING BITUMINOUS CONCRETE
 - G. EXISTING CONCRETE DECK
 - H. EXISTING ASBESTOS WATERPROOFING

* EXTEND EXISTING VERTICAL REINFORCEMENT 1'-6" AND CUT THE REMAINDER. CLEAN AND STRAIGHTEN, AND INCORPORATE INTO NEW CONSTRUCTION. COST INCLUDED WITH CONCRETE SUPERSTRUCTURE

TYPICAL SECTION
(LOOKING EAST)

LOCATION NO. 3
EXIST. BRIDGE PLANS
ABANDONED R.R. OVER US 41
SN: 049-0032 REV. SHEET 2-27-07