

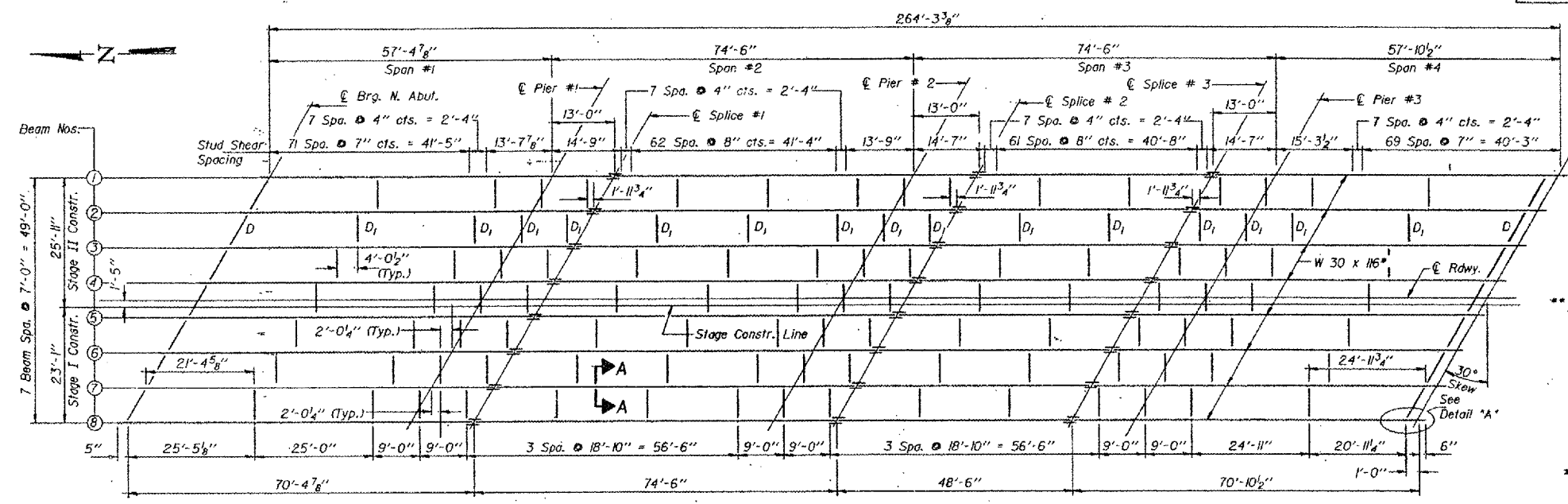
ROUTE	SECTION	COUNTY	TOTAL SHEETS	SHEET NUMBER
VARIOUS	2006-018 BP	VARIOUS	27	22

CONTRACT NO.: 60B43

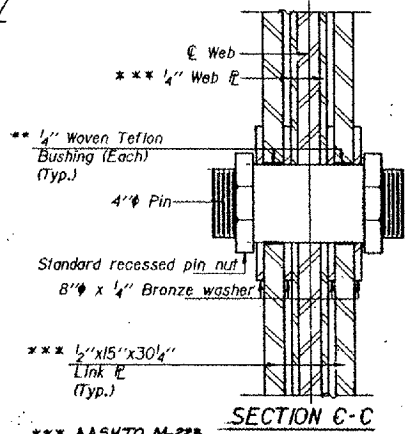
STATE OF ILLINOIS
DEPARTMENT OF TRANSPORTATION

DATE	REVISION	BY	NO.	DATE
			39	

SHEET NO. 20
39 SHEETS



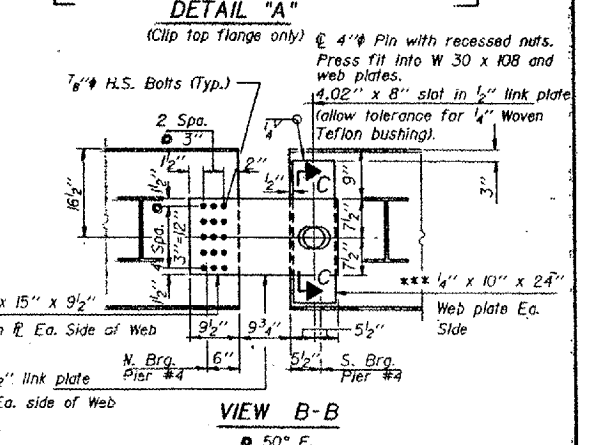
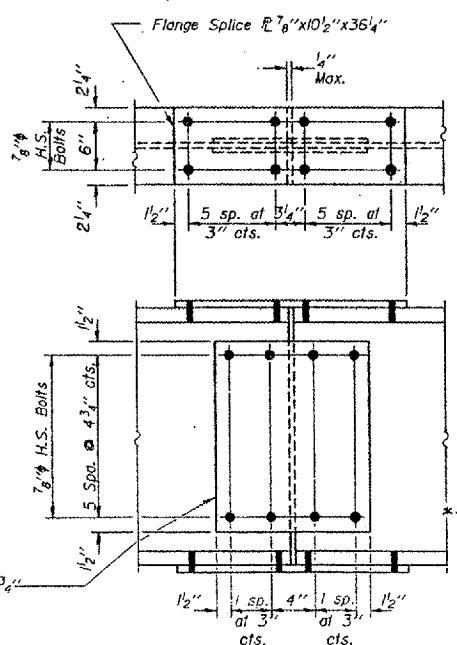
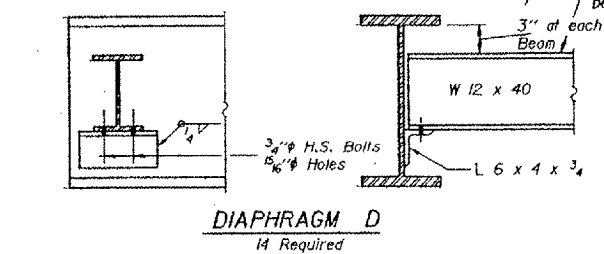
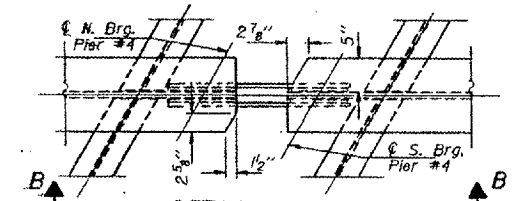
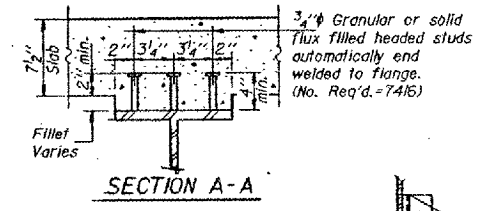
PIN DETAIL
Pin shall be case hardened. See Standard Specifications.



FRAMING PLAN
Unit #1 - Spans #1-#4

- * W 30 x 116 (AASHTO M-223, Grade 50) for all Beams in Unit #1.
- ** Self lubricating filament wound epoxy matrix backed Duralon bearing or metal backed Fiber Glide bearing or equivalent. Cost incidental to Structural Steel.

Diaphragm D at the Stage Constr. Joint shall be placed during Stage II Construction. See Sheet #2 for details.



DESIGNED: Steven K. DeCarra, TJD.
CHECKED: David Bendick.
DRAWN: Ron Bohner, E.V. Taylor.
CHECKED: TJD, D.B.
1-2-D 8-30-80

EXAMINED: [Signature]
PASSED: [Signature]
APPROVED: [Signature]
DIRECTOR OF HIGHWAYS

Note: Two hardened washers shall be required over all 1 1/2" holes. All contact surfaces of joints shall be free of paint or lacquer. All structural steel shall be AASHTO M-183 except as noted.

LOCATION NO. 6
EXIST. BRIDGE PLANS
US 14 OVER RR AND MCOOB
SN: 056-0007