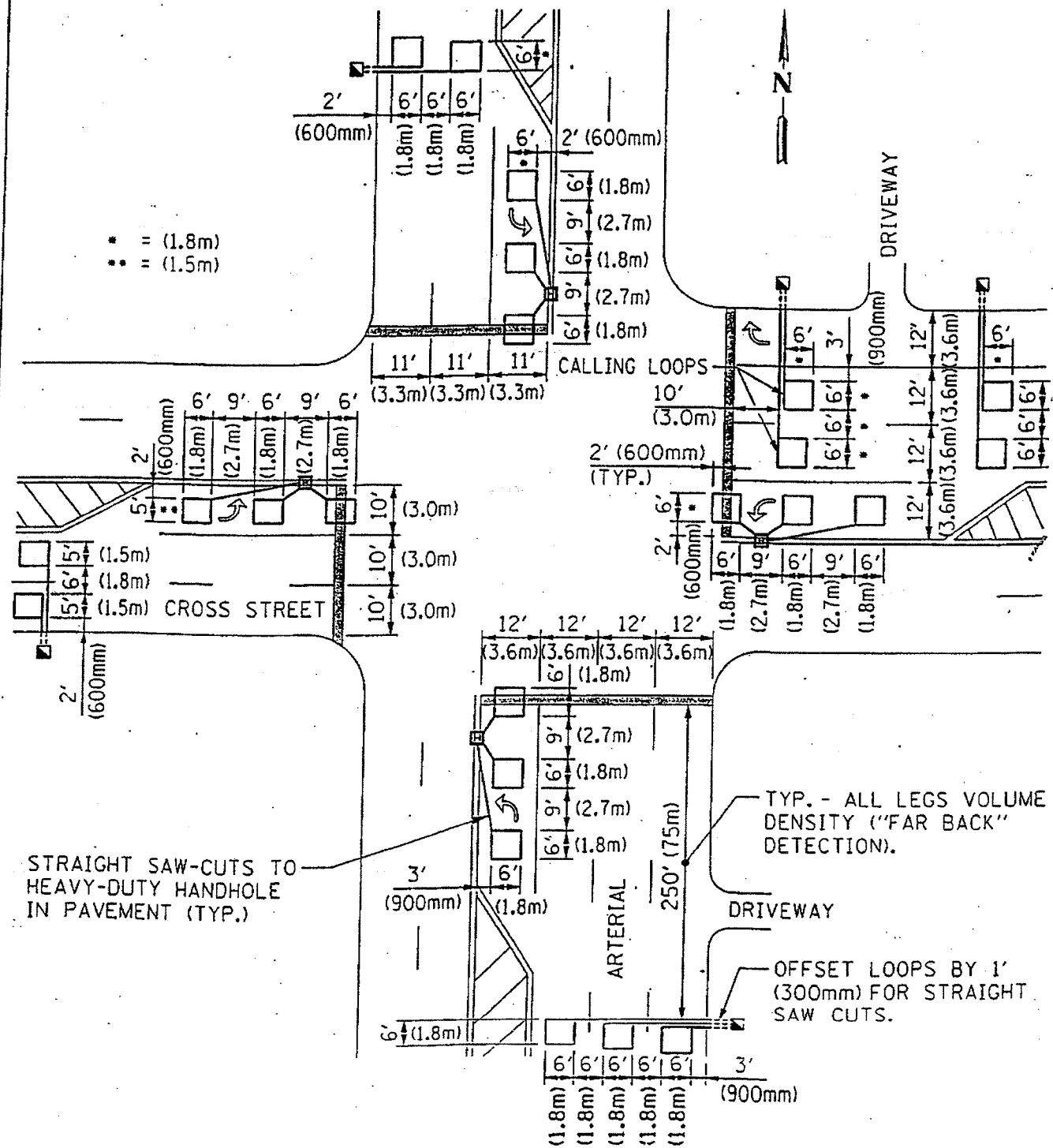


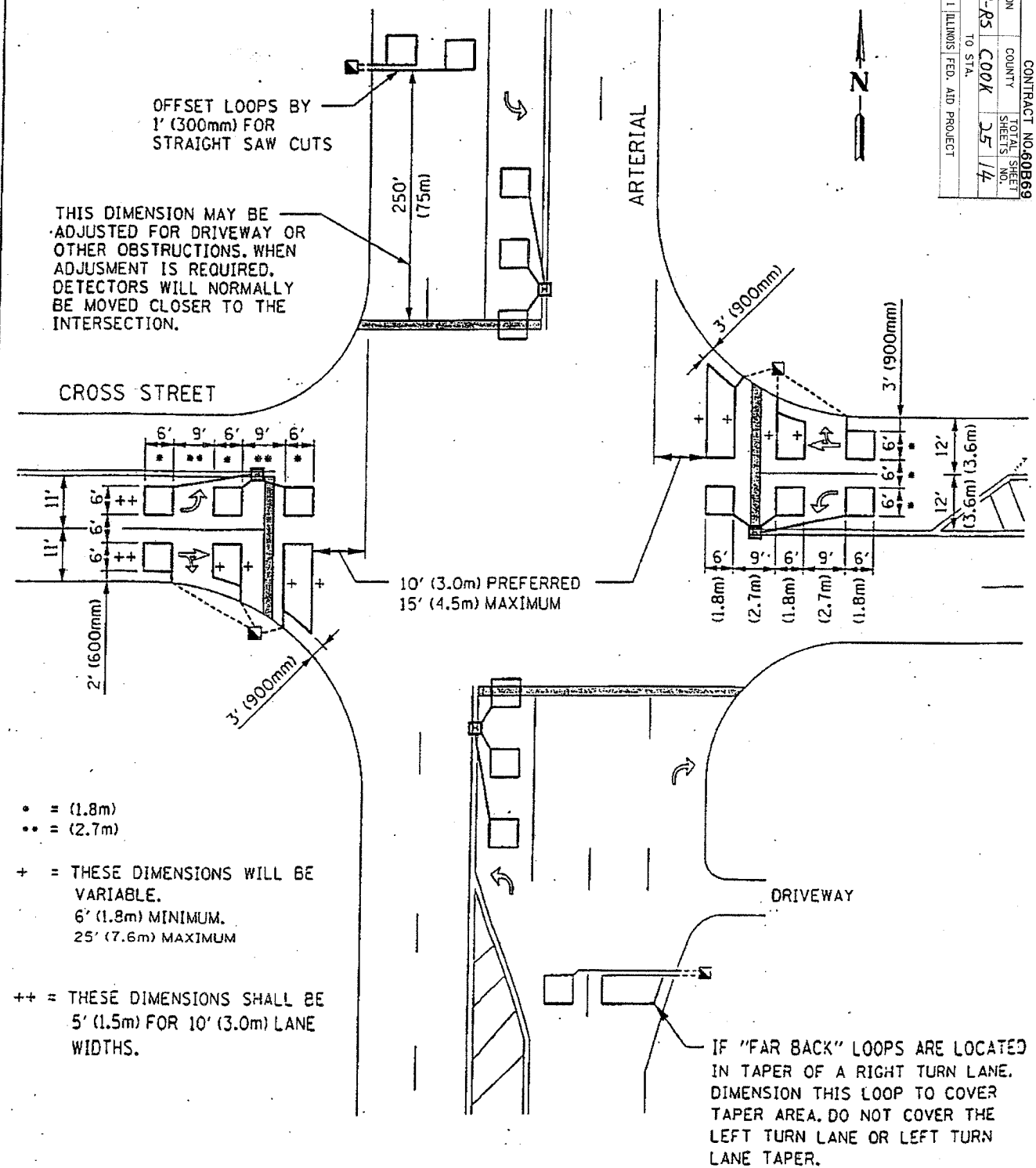
ARTERIAL-VOLUME DENSITY ("FAR BACK" DETECTION)
CROSS STREET-VOLUME DENSITY ("FAR BACK" DETECTION)



LOOPS ARE SAW-CUT TO THE EDGE OF PAVEMENT. 1" (25mm) UNIT DUCT IS RUN BETWEEN EDGE OF PAVEMENT AND HANDHOLE, (TYP. FOR LOOPS THAT TERMINATE IN HANDHOLES OUTSIDE PAVEMENT).

N.T.S.

ARTERIAL-VOLUME DENSITY ("FAR BACK" DETECTION)
CROSS STREET-NON VOLUME DENSITY ("UPTIGHT" PRESENCE DETECTION)



CONTRACT NO. 60869	
EAU SECTION	COUNTY
REF. SHEET	COOK
DATE 5-14-85	SHEET NO. 25/4
STA. TO STA.	FED. ROAD DIST. NO. 1 ILLINOIS FED. AID PROJECT

N.T.S.