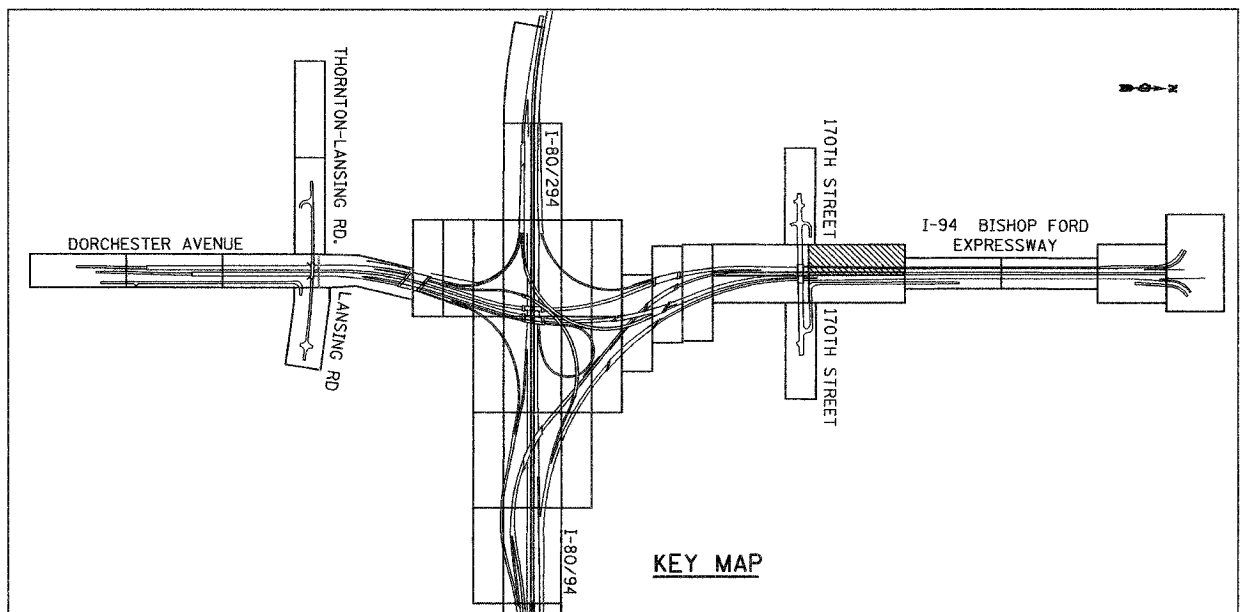
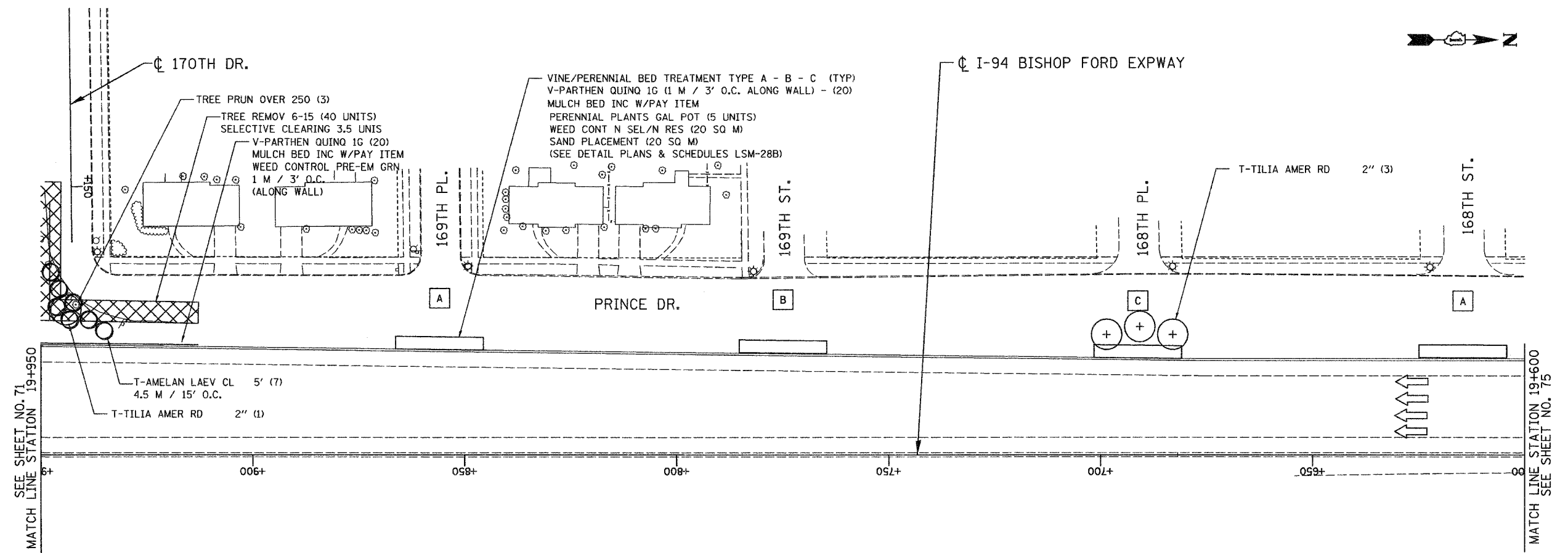


ALL DIMENSIONS IN METERS EXCEPT PAY ITEMS AND UNLESS NOTED OTHERWISE

F.A.I. RTE.	SECTION	COUNTY	TOTAL SHEETS	SHEET NO.
80/94	2003-106LS	COOK	88	73
STA.		TO STA.		
FED. ROAD DIST. NO.		ILLINOIS FED. AID PROJECT		
CONTRACT NO. 62639				



LSNS - 60

REVISIONS	
NAME	DATE

ILLINOIS DEPARTMENT OF TRANSPORTATION  
 I-80/94/US 6  
 KINGERY-BORMAN EXPRESSWAY  
 BURNHAM ROAD TO US 41  
**LANDSCAPING PLAN**  
**I-94 BISHOP FORD EXPWAY**

SCALE 1:500  
 DATE 12/13/06  
 DRAWN BY ACE/CAD  
 CHECKED BY TJW

**AMERICAN**  
 CONSULTING ENGINEERS

12/13/2006  
 3:06:30 PM  
 P:\project\2010\1080\CADD\Contract\LSNS\_60.dwg