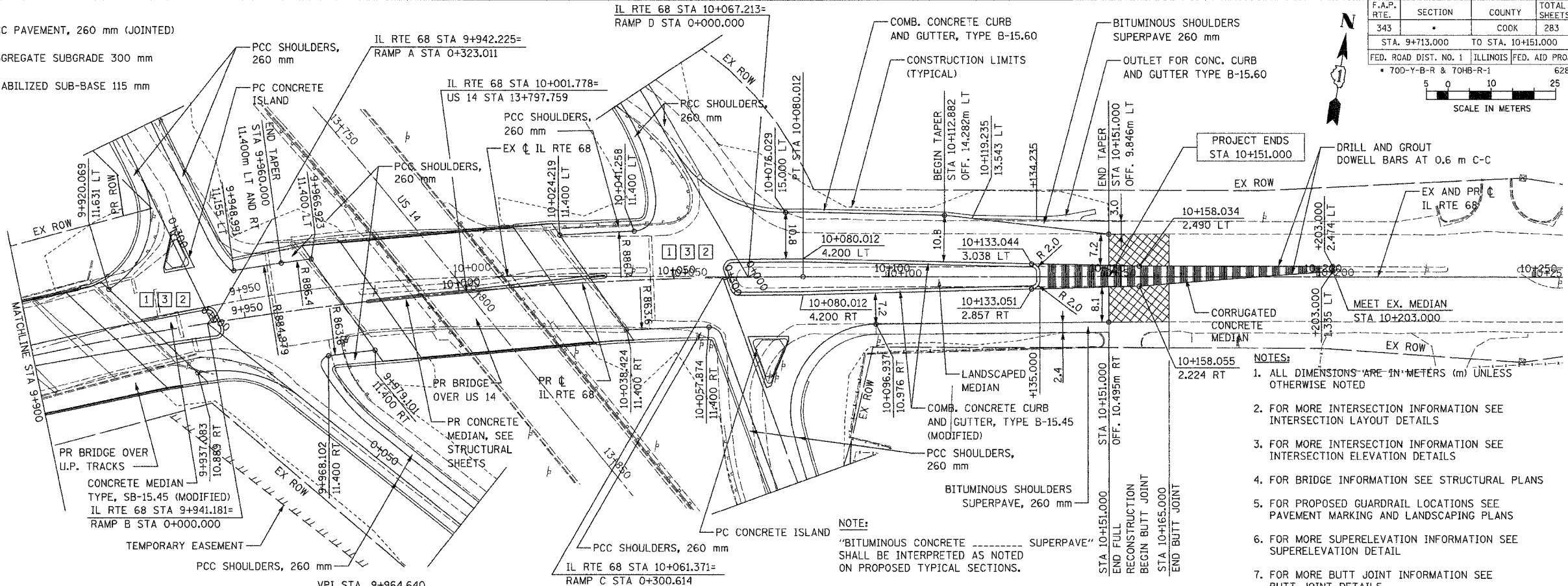


LEGEND:

- 1 PCC PAVEMENT, 260 mm (JOINTED)
- 2 AGGREGATE SUBGRADE 300 mm
- 3 STABILIZED SUB-BASE 115 mm

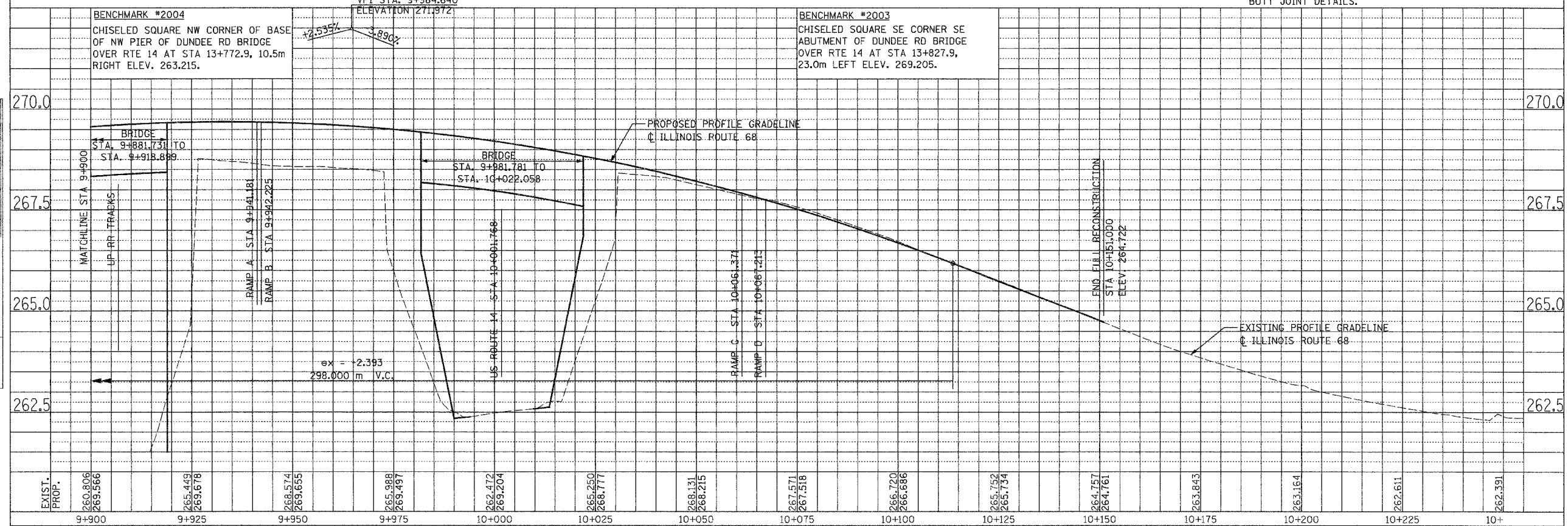


F.A.P. RTE.	SECTION	COUNTY	TOTAL SHEETS	SHEET NO.
343		COOK	283	28
STA. 9+713.000 TO STA. 10+151.000				
FED. ROAD DIST. NO. 1 ILLINOIS FED. AID PROJECT				
• 700-Y-B-R & 70HB-R-1 62897				

PLAN	DATE
SURVEYED	
PLOTTED	
ALIGNED	
CHECKED	
NO.	
ICADD FILE NAME	

- NOTES:**
1. ALL DIMENSIONS ARE IN METERS (m) UNLESS OTHERWISE NOTED
 2. FOR MORE INTERSECTION INFORMATION SEE INTERSECTION LAYOUT DETAILS
 3. FOR MORE INTERSECTION INFORMATION SEE INTERSECTION ELEVATION DETAILS
 4. FOR BRIDGE INFORMATION SEE STRUCTURAL PLANS
 5. FOR PROPOSED GUARDRAIL LOCATIONS SEE PAVEMENT MARKING AND LANDSCAPING PLANS
 6. FOR MORE SUPERELEVATION INFORMATION SEE SUPERELEVATION DETAIL
 7. FOR MORE BUTT JOINT INFORMATION SEE BUTT JOINT DETAILS.

NOTE:
"BITUMINOUS CONCRETE" SUPERPAVE SHALL BE INTERPRETED AS NOTED ON PROPOSED TYPICAL SECTIONS.



PROFILE	DATE
SURVEYED	
PLOTTED	
GRADES CHECKED	
BY	
NO.	
STRUCTURE NOTATIONS CHKD	

SCALE: H= 1:500, V=1:50 IL ROUTE 68-PROPOSED PLAN AND PROFILE -2