

CURVE RAMP\_D1  
SUPERELEVATION TRANSITION

STATION	SLOPE
0+015.601	2.6%
0+066.464	-6.0%
0+122.464	2.0%

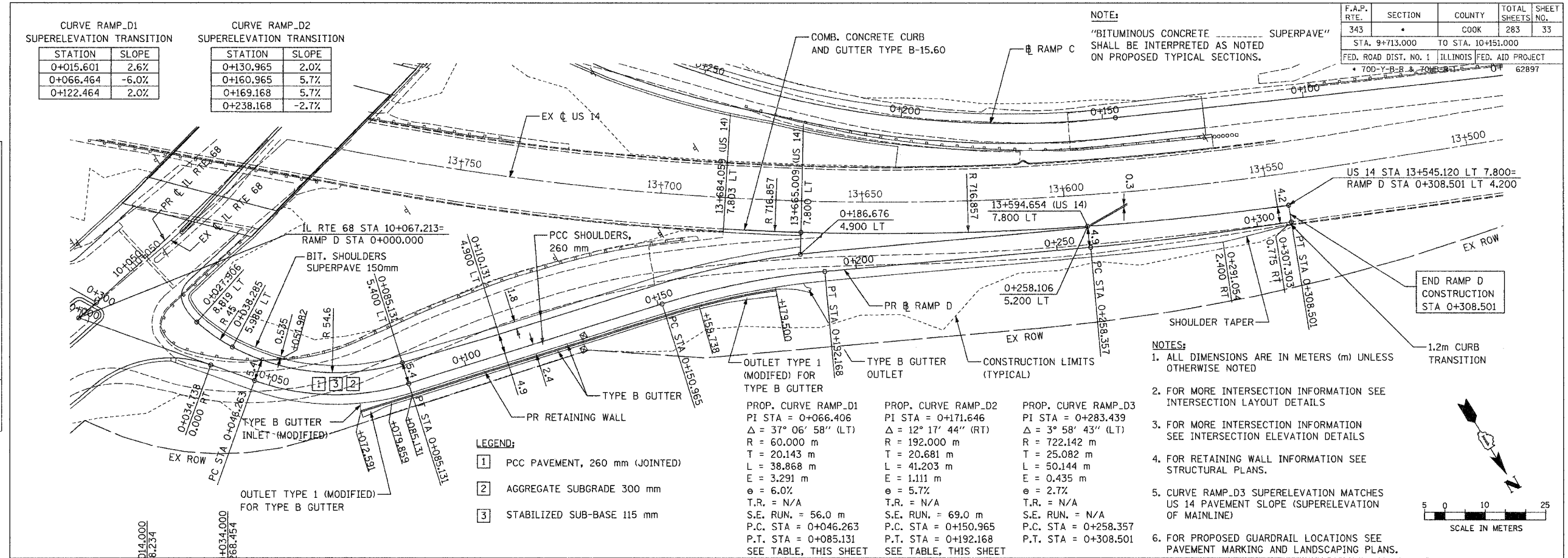
CURVE RAMP\_D2  
SUPERELEVATION TRANSITION

STATION	SLOPE
0+130.965	2.0%
0+160.965	5.7%
0+169.168	5.7%
0+238.168	-2.7%

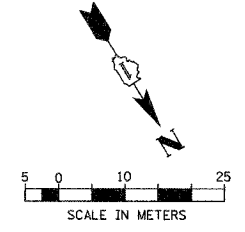
F.A.P. RTE.	SECTION	COUNTY	TOTAL SHEETS	SHEET NO.
343		COOK	283	33
STA. 9+713.000 TO STA. 10+151.000				
FED. ROAD DIST. NO. 1 ILLINOIS FED. AID PROJECT				
700-Y-B-R & 700-B-R				
62897				

NOTE:  
"BITUMINOUS CONCRETE SUPERPAVE"  
SHALL BE INTERPRETED AS NOTED  
ON PROPOSED TYPICAL SECTIONS.

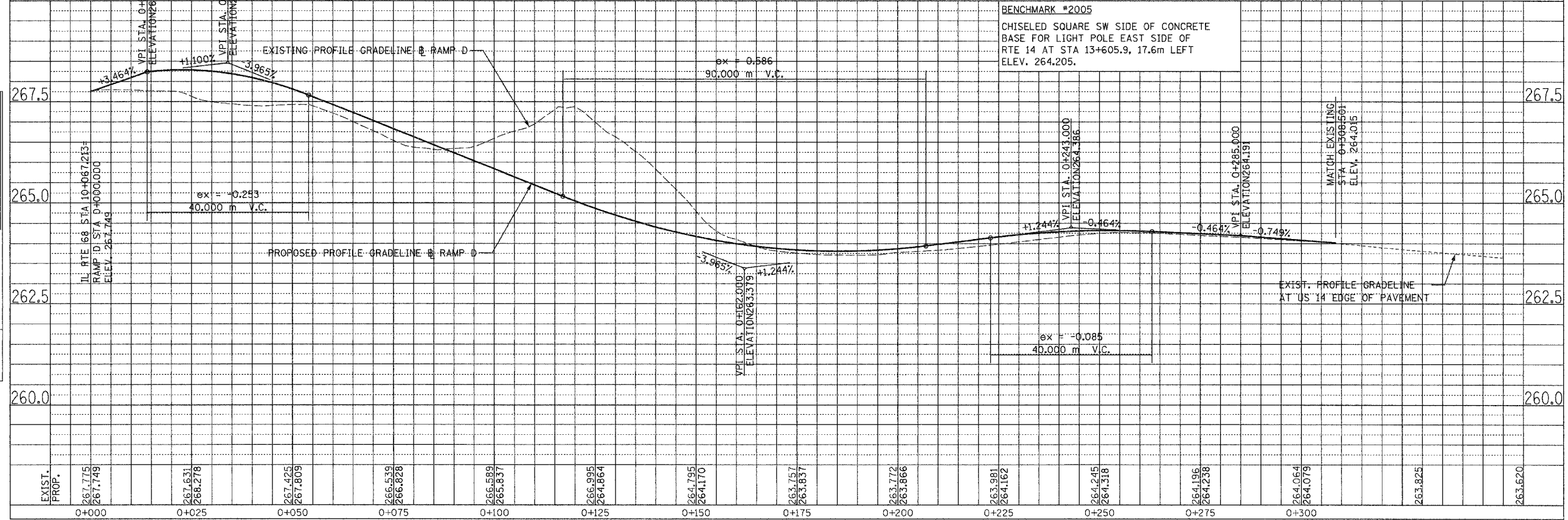
PLAN	DATE
SURVEYED	
PLOTTED	
NOTE BOOK	
ALIGNED	
CHECKED	
NO.	
FILE NAME	



- NOTES:
1. ALL DIMENSIONS ARE IN METERS (m) UNLESS OTHERWISE NOTED
  2. FOR MORE INTERSECTION INFORMATION SEE INTERSECTION LAYOUT DETAILS
  3. FOR MORE INTERSECTION INFORMATION SEE INTERSECTION ELEVATION DETAILS
  4. FOR RETAINING WALL INFORMATION SEE STRUCTURAL PLANS.
  5. CURVE RAMP\_D3 SUPERELEVATION MATCHES US 14 PAVEMENT SLOPE (SUPERELEVATION OF MAINLINE)
  6. FOR PROPOSED GUARDRAIL LOCATIONS SEE PAVEMENT MARKING AND LANDSCAPING PLANS.



PROFILE	DATE
SURVEYED	
PLOTTED	
NOTE BOOK	
GRADES CHECKED	
NO.	
STRUCTURE NOTATIONS CHKD	



SCALE: H= 1:500, V=1:50

RAMP D-PROPOSED PLAN AND PROFILE -7

VTI\GIS\343\62897.dwg 11/26/2008 2:28:38 PM