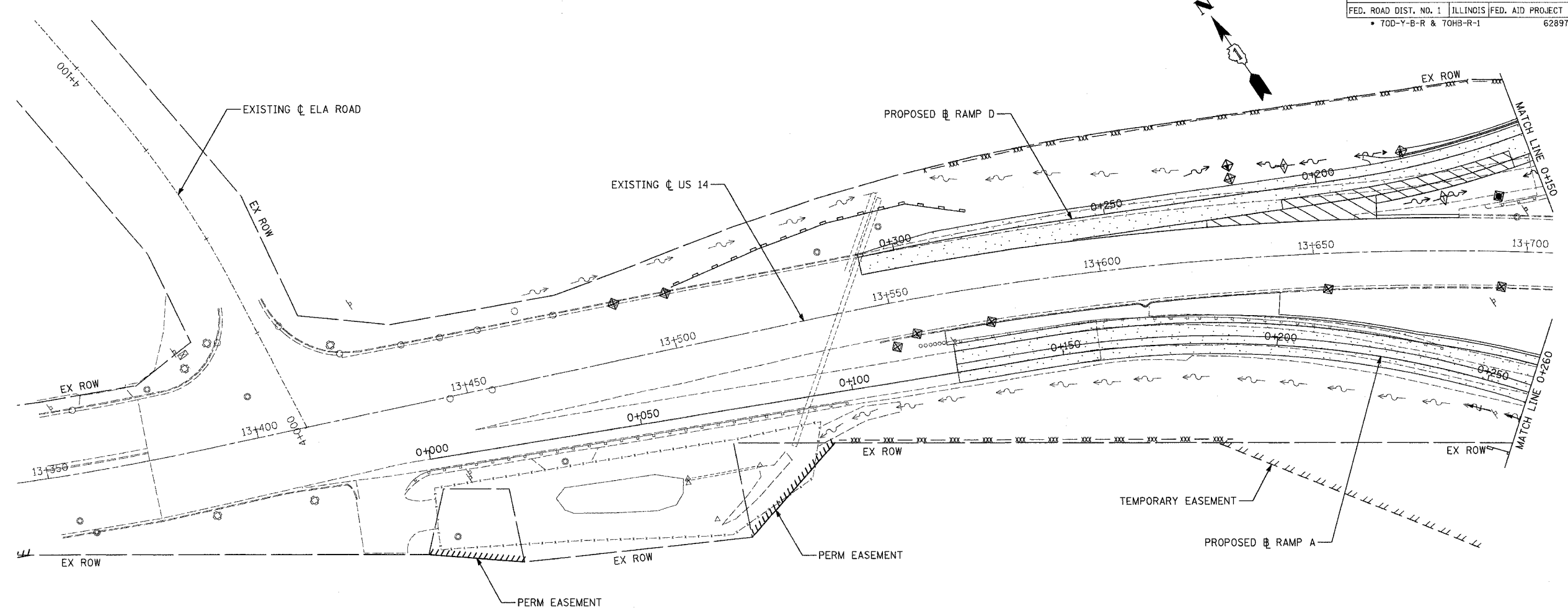


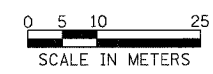
| F.A.P. RTE.            | SECTION | COUNTY                    | TOTAL SHEETS | SHEET NO. |
|------------------------|---------|---------------------------|--------------|-----------|
| 343                    | *       | COOK                      | 283          | 75        |
| STA. 9+713.000         |         | TO STA. 10+151.000        |              |           |
| FED. ROAD DIST. NO. 1  |         | ILLINOIS FED. AID PROJECT |              |           |
| * 70D-Y-B-R & 70H3-R-1 |         | 62897                     |              |           |



- NOTES:**
1. FOR MORE DRAINAGE INFORMATION SEE PROPOSED DRAINAGE PLANS.
  2. PERIMETER EROSION BARRIER IS LOCATED ON TEMP. EASEMENT/PERM. EASEMENT/R.O.W. LINE AS SHOWN ON THE PLANS.
  3. FOR PERMANENT EROSION CONTROL INFORMATION SEE LANDSCAPING PLANS.
  4. FOR MORE STAGE CONSTRUCTION INFORMATION SEE MOT PLANS.
  5. TEMPORARY FENCE IS LOCATED ON R.O.W LINE AS SHOWN ON THE PLANS.

**LEGEND:**

|  |  |
|--|--|
|  | INLET AND PIPE PROTECTION                |
|  | PERIMETER EROSION BARRIER                |
|  | TEMPORARY DITCH CHECK                    |
|  | DITCH FLOW                               |
|  | SWALE                                    |
|  | TEMPORARY FENCE                          |
|  | CONSTRUCTION ZONE                        |
|  | TEMPORARY PAVEMENT                       |
|  | TEMPORARY PAVEMENT (PREVIOUS STAGES)     |
|  | COMPLETED CONSTRUCTION (PREVIOUS STAGES) |



| REVISIONS |      | ILLINOIS DEPARTMENT OF TRANSPORTATION<br>ILLINOIS ROUTE 68<br>TEMPORARY EROSION CONTROL PLAN<br>ILLINOIS ROUTE 68 STAGE 3A AND 3B<br>STA. 13+350 TO STA. 13+700 US 14 |
|-----------|------|---|
| NAME      | DATE |   |
|           |      | SCALE 1:500<br>DATE OCTOBER, 2006   |
|           |      |   |
|           |      |   |
|           |      |   |
|           |      |   |
|           |      | DRAWN BY GRH<br>CHECKED BY PK   |